



Harborough District Council
Strategic Housing Land Availability Assessment
2015 Update

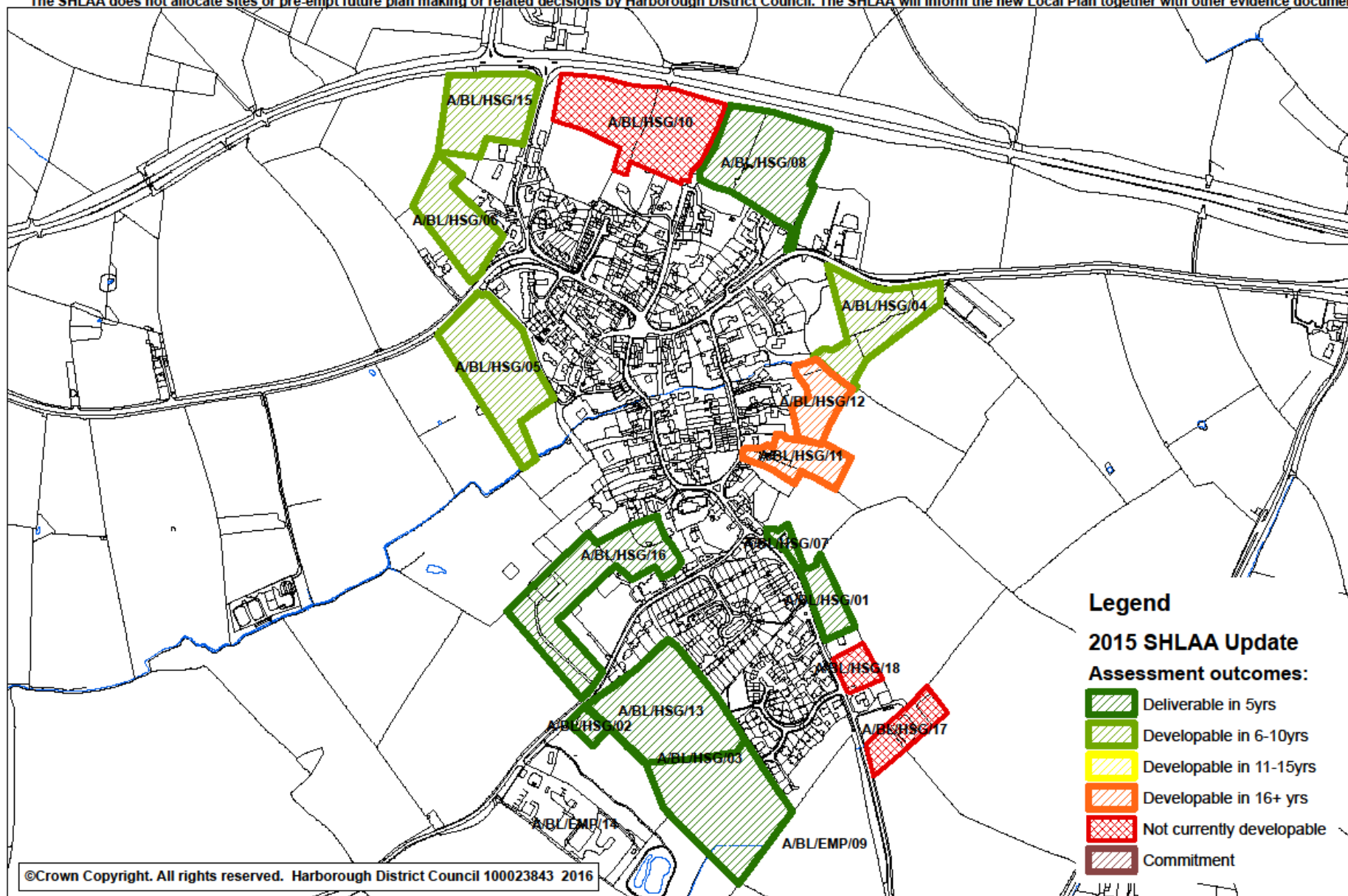
Appendix E
Scored Settlement Maps

May 2016

[Billesdon](#)
[Bitteswell](#)
[Broughton Astley](#)
[Church Langton](#)
[Claybrooke Magna](#)
[Dunton Bassett](#)
[Fleckney](#)
[Foxton](#)
[Gilmorton](#)
[Great Bowden](#)
[Great Easton](#)
[Great Glen](#)
[Hallaton](#)
[Houghton on the Hill](#)
[Husbands Bosworth](#)
[Lubenham](#)
[Lutterworth](#)
[Market Harborough \(eastern sites\)](#)
[Market Harborough \(north western sites\)](#)
[Market Harborough \(north eastern sites\)](#)
[Market Harborough \(southern sites\)](#)
[Medbourne](#)
[North Kilworth](#)
[Scraptoft/Thurnby/Bushby \(All sites\)](#)
[Scraptoft/Thurnby/Bushby \(Developable sites only\)](#)
[Scraptoft/Thurnby/Bushby \(Potential SDAs\)](#)
[Stoughton/Edge of Leicester](#)
[Swinford](#)
[The Kibworths \(All sites\)](#)
[The Kibworths \(Developable sites only\)](#)
[The Kibworths \(Potential SDAs\)](#)
[Tilton on the Hill](#)
[Tugby](#)
[Ullesthorpe](#)

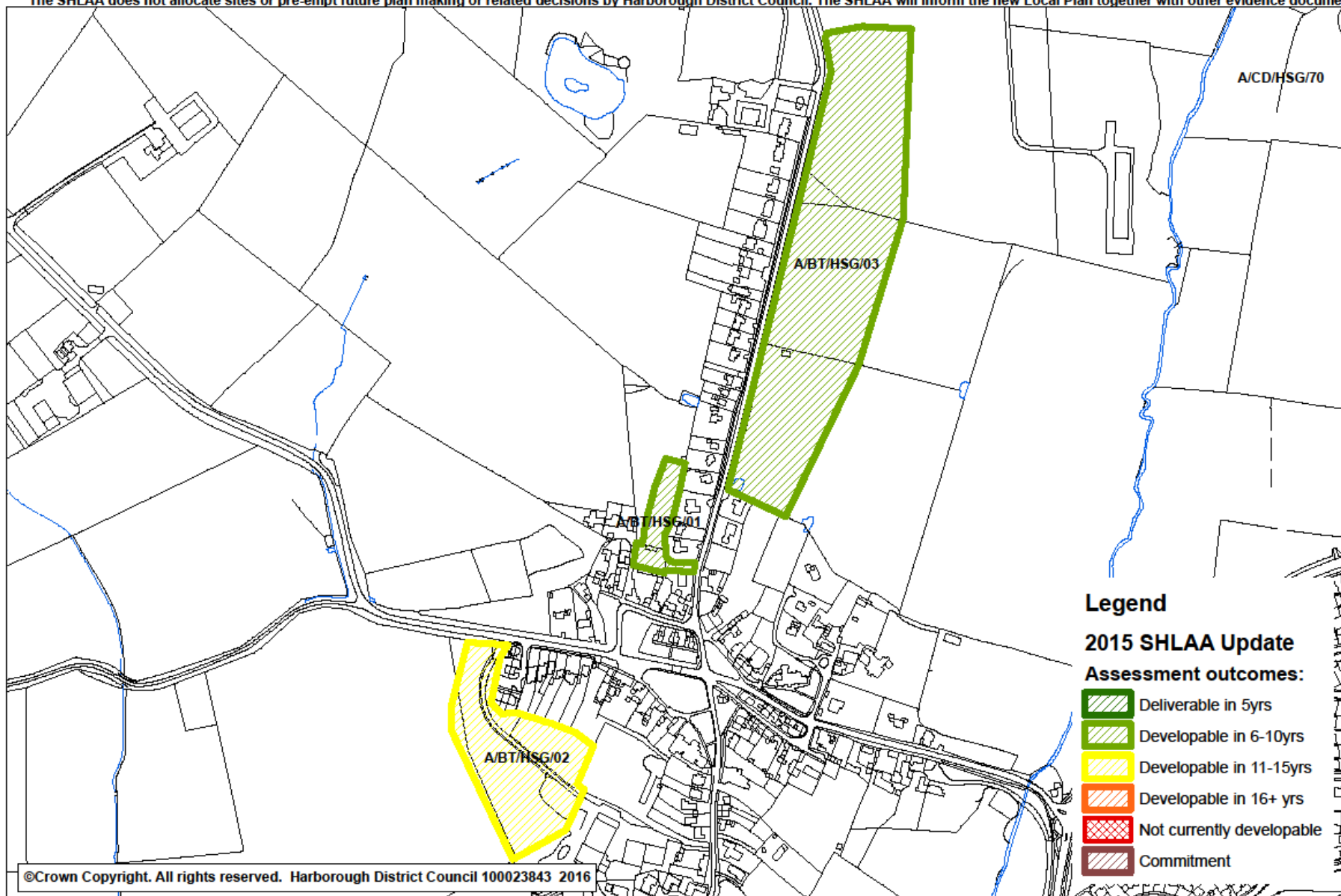
SHLAA 2015 Billesdon Outcomes

The SHLAA does not allocate sites or pre-empt future plan making or related decisions by Harborough District Council. The SHLAA will inform the new Local Plan together with other evidence documents.



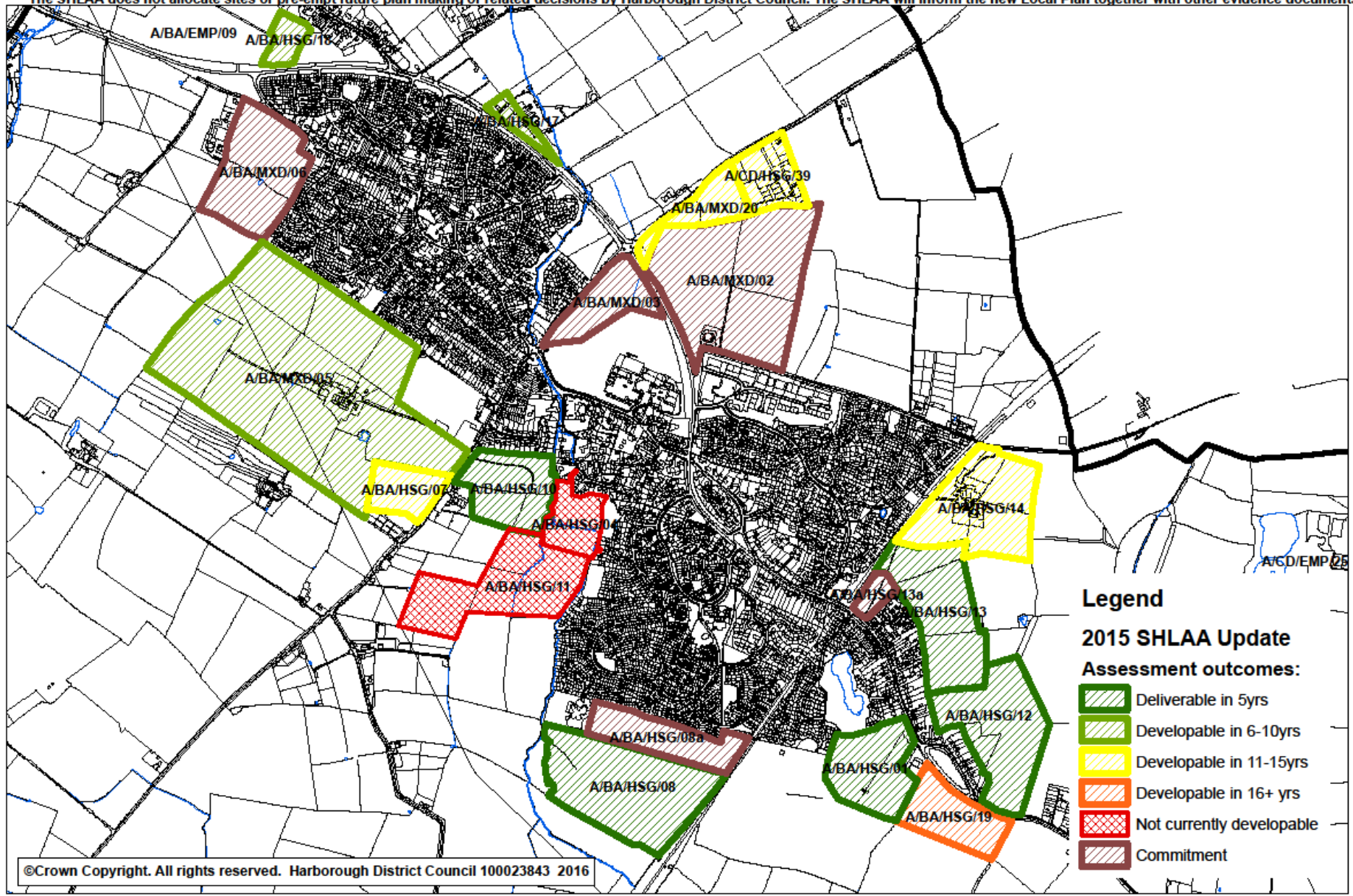
SHLAA 2015 Bitteswell Outcomes

The SHLAA does not allocate sites or pre-empt future plan making or related decisions by Harborough District Council. The SHLAA will inform the new Local Plan together with other evidence documents.



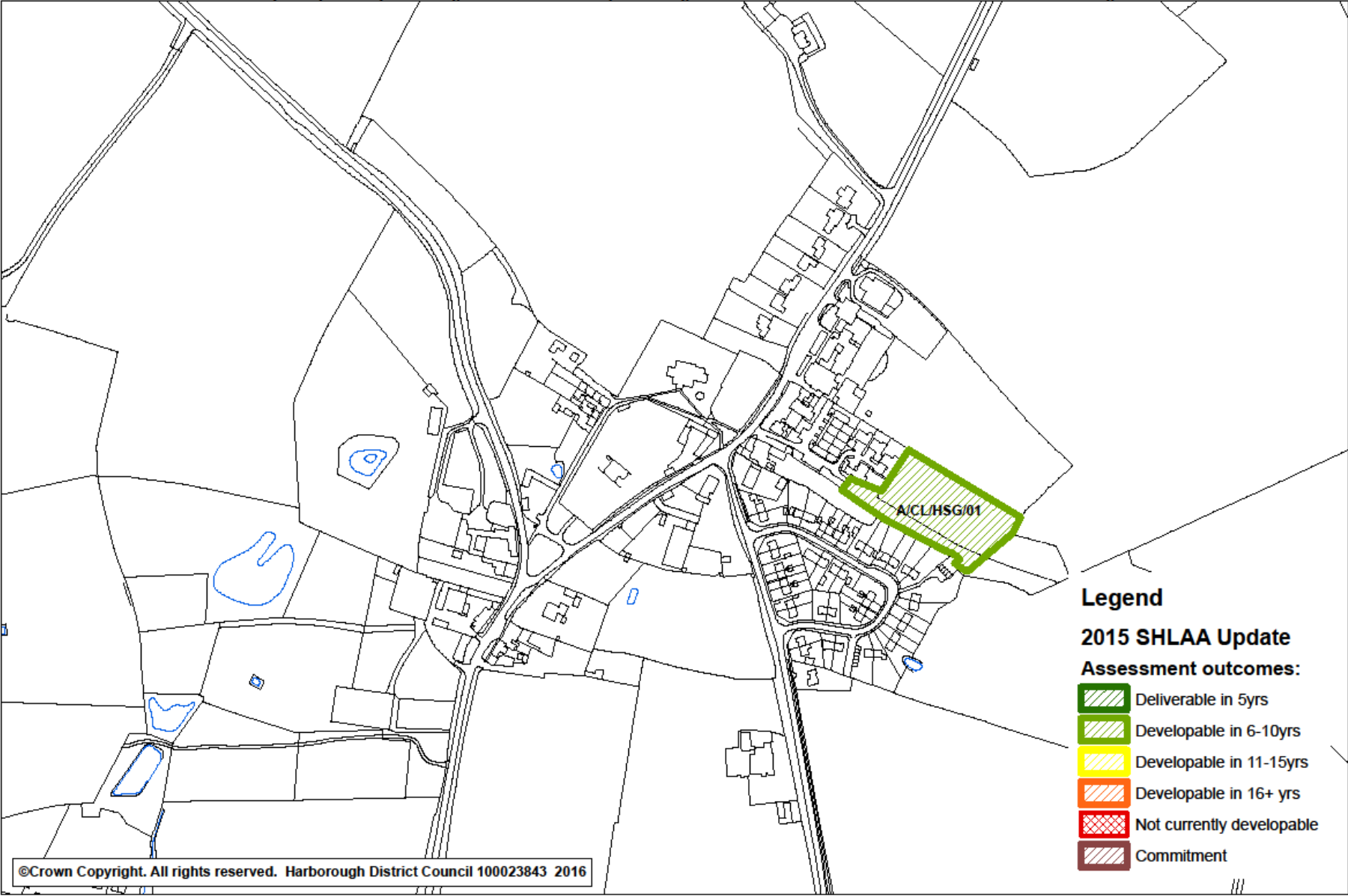
SHLAA 2015 Broughton Astley Outcomes

The SHLAA does not allocate sites or pre-empt future plan making or related decisions by Harborough District Council. The SHLAA will inform the new Local Plan together with other evidence documents.



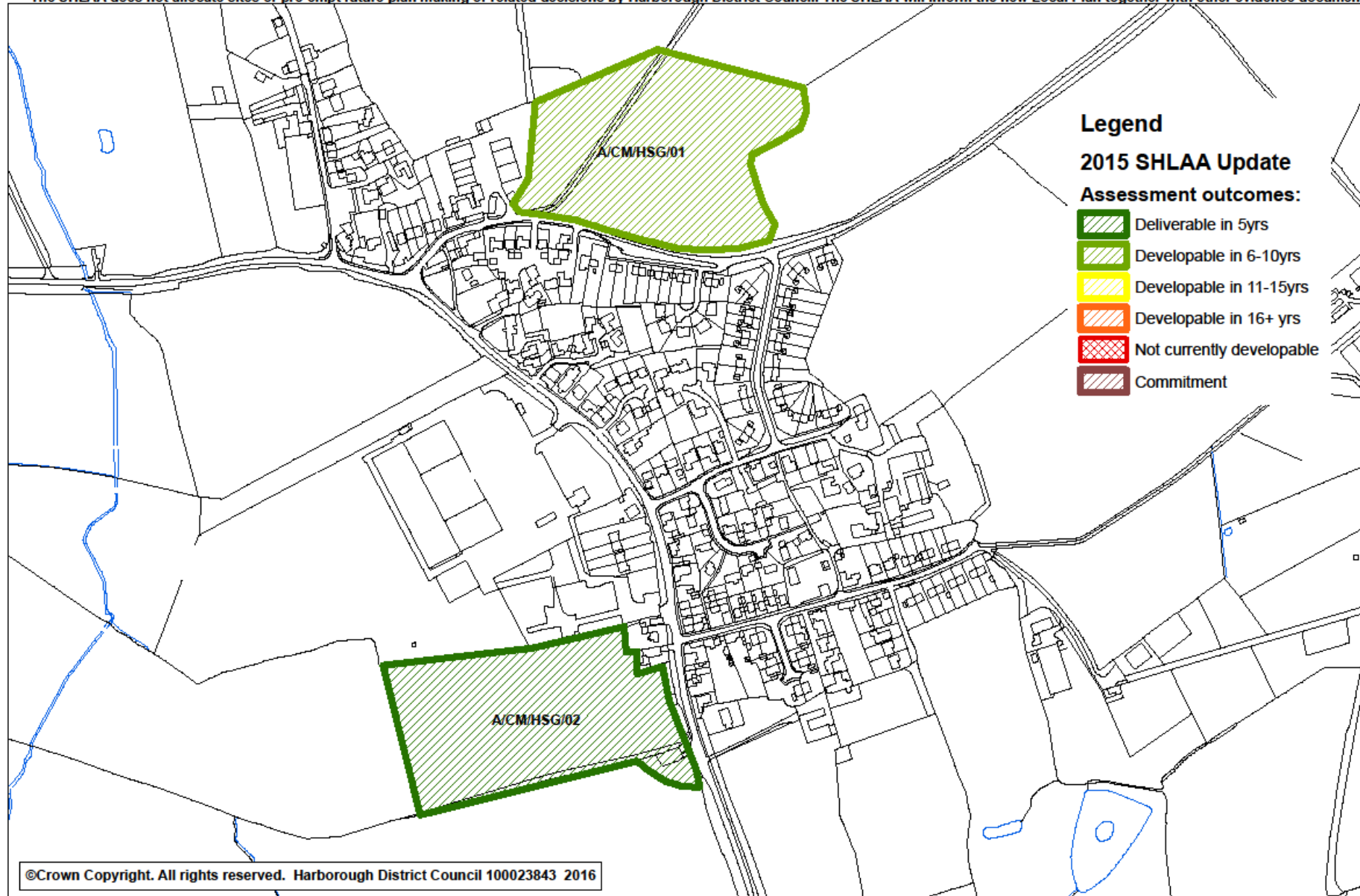
SHLAA 2015 Church Langton Outcomes

The SHLAA does not allocate sites or pre-empt future plan making or related decisions by Harborough District Council. The SHLAA will inform the new Local Plan together with other evidence documents.



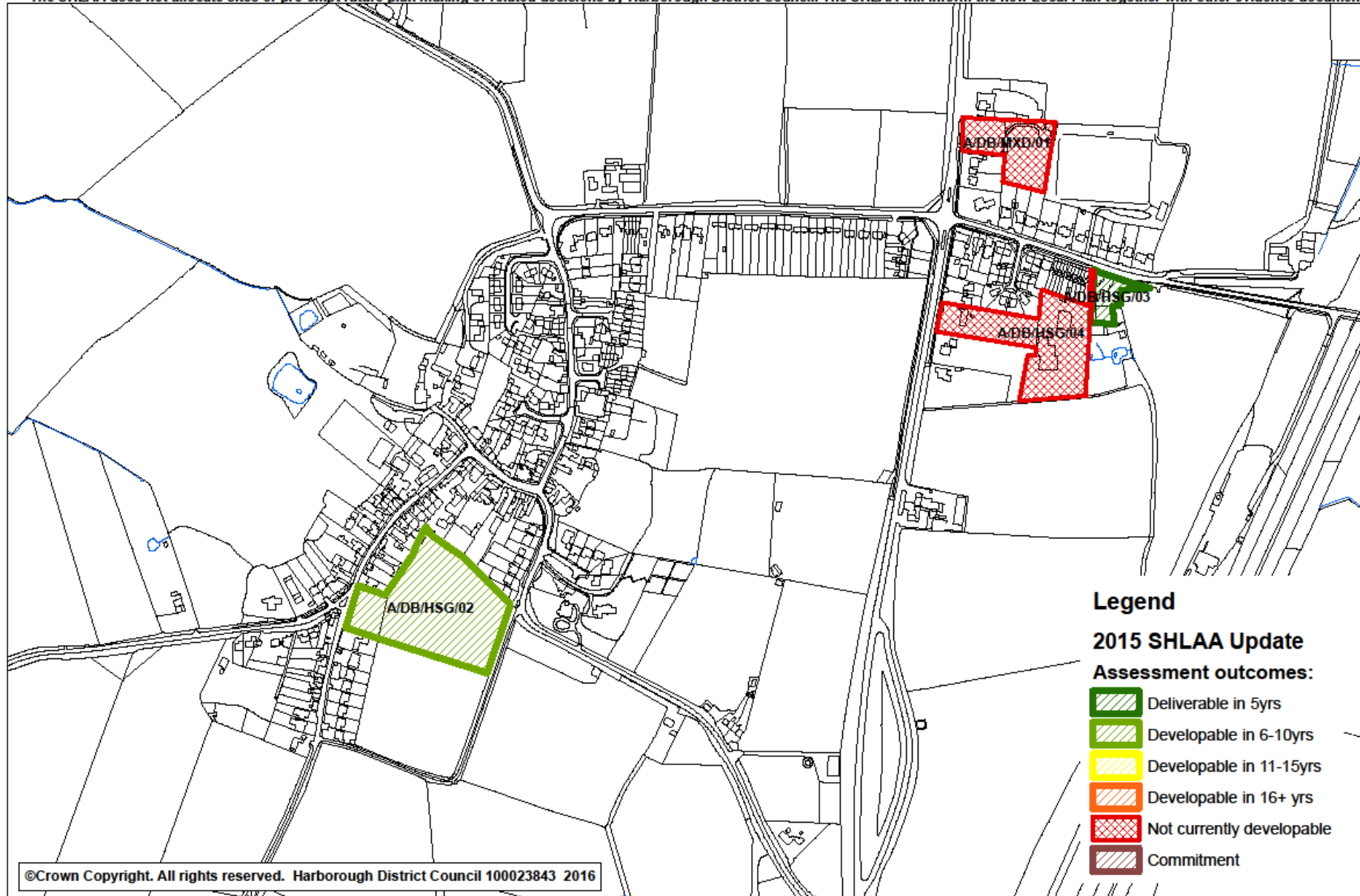
SHLAA 2015 Claybrooke Magna Outcomes

The SHLAA does not allocate sites or pre-empt future plan making or related decisions by Harborough District Council. The SHLAA will inform the new Local Plan together with other evidence documents.



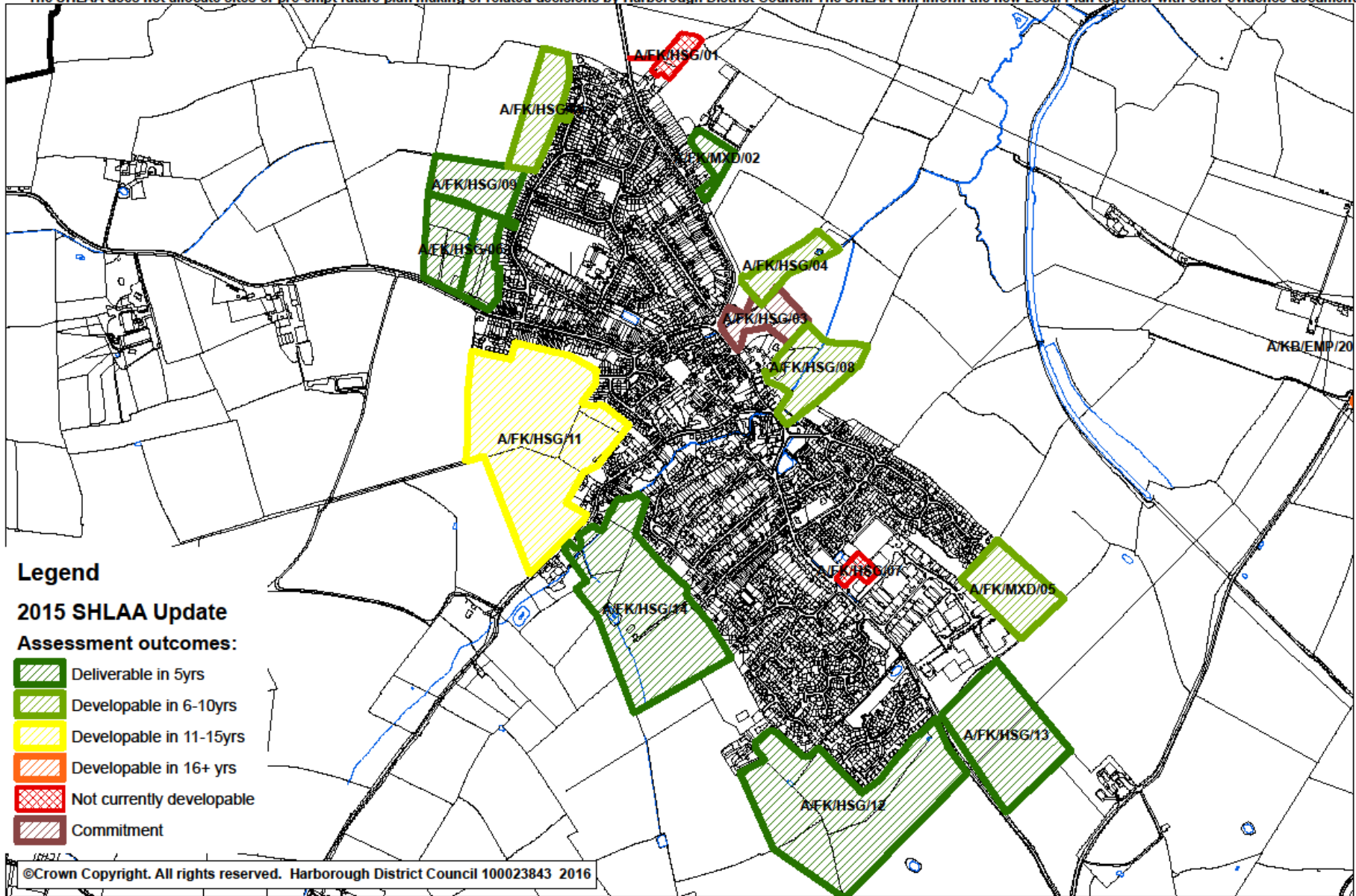
SHLAA 2015 Dunton Bassett Outcomes

The SHLAA does not allocate sites or pre-empt future plan making or related decisions by Harborough District Council. The SHLAA will inform the new Local Plan together with other evidence documents.



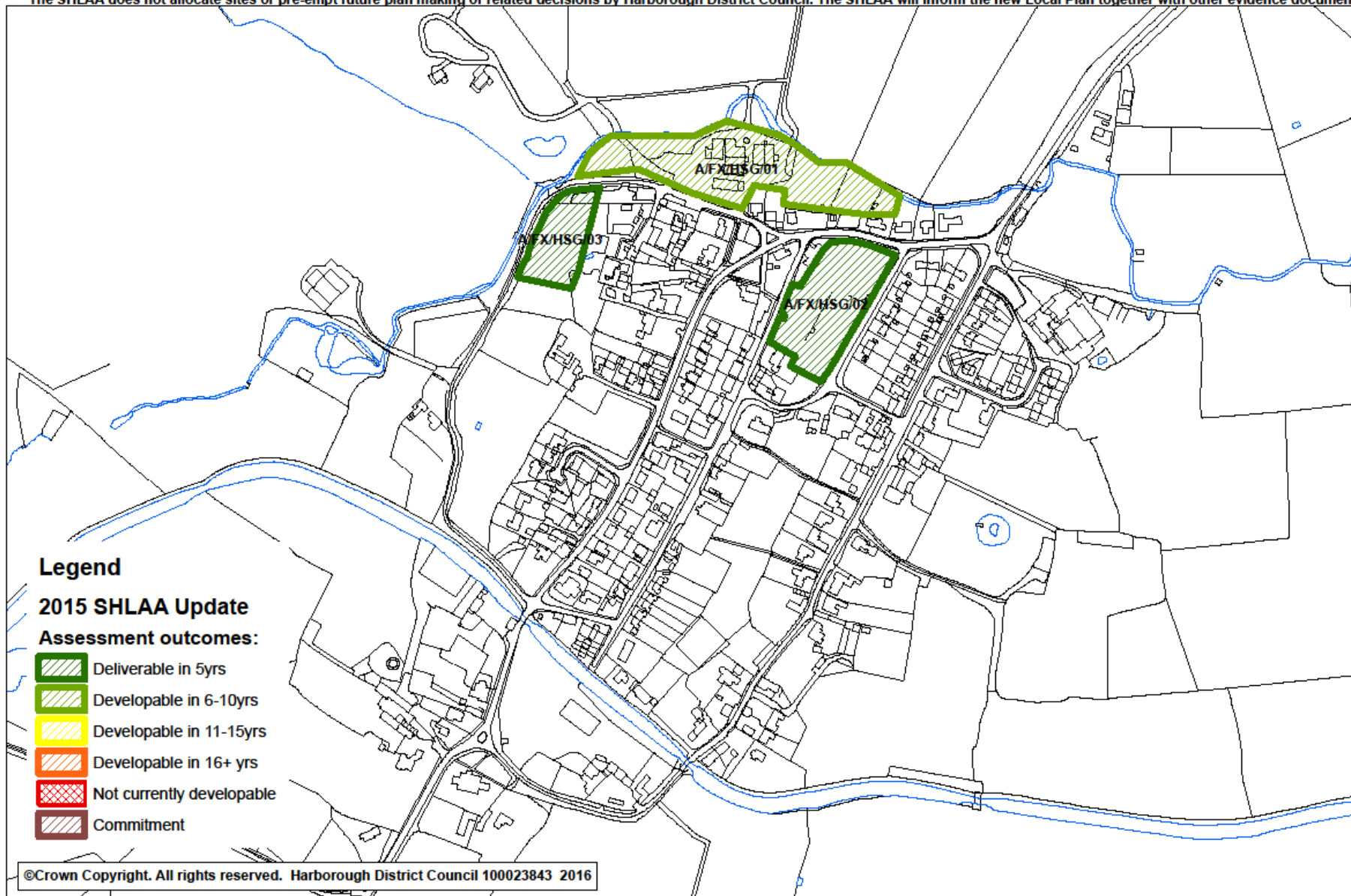
SHLAA 2015 Fleckney Outcomes

The SHLAA does not allocate sites or pre-empt future plan making or related decisions by Harborough District Council. The SHLAA will inform the new Local Plan together with other evidence documents.



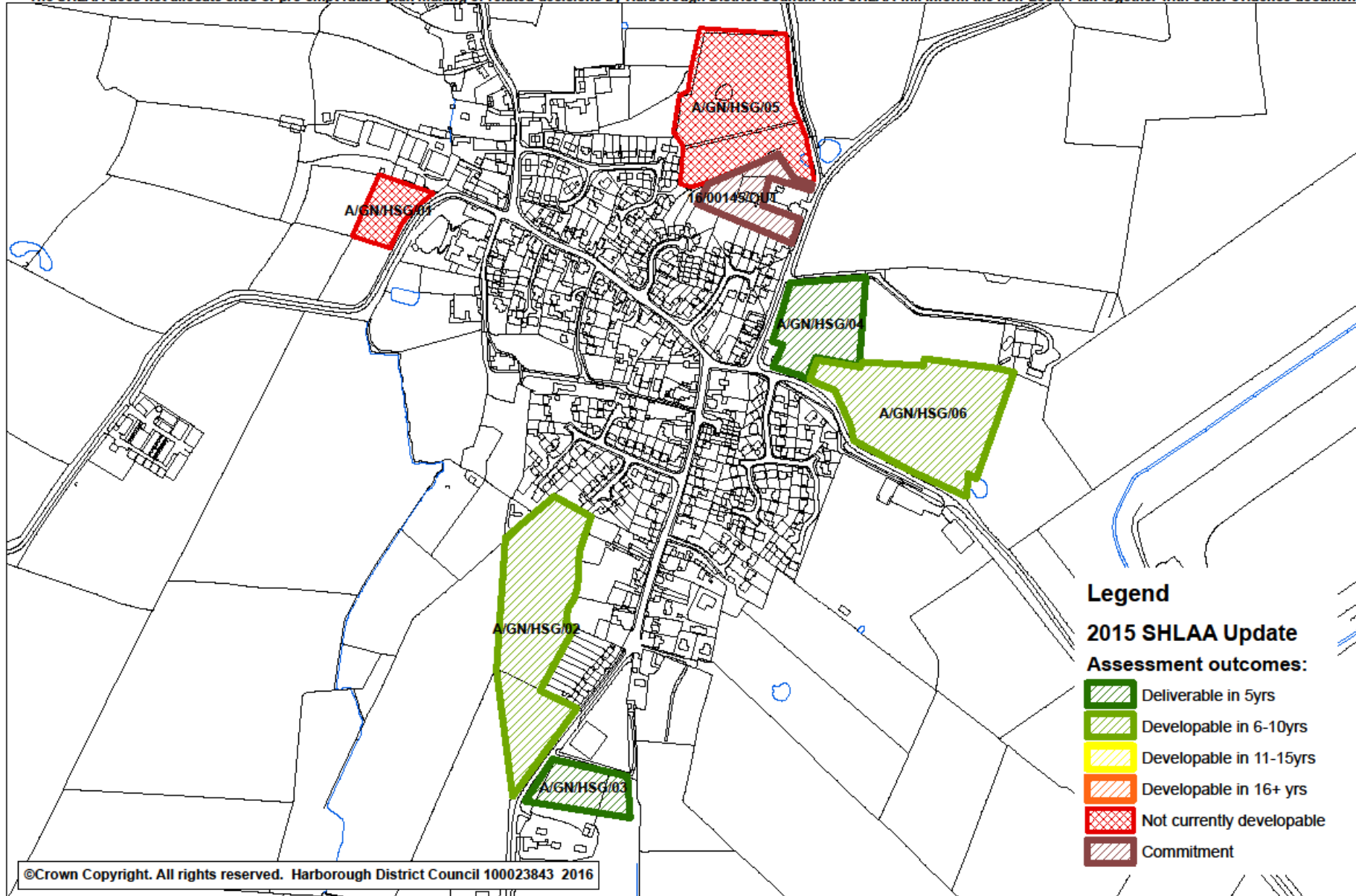
SHLAA 2015 Foxton Outcomes

The SHLAA does not allocate sites or pre-empt future plan making or related decisions by Harborough District Council. The SHLAA will inform the new Local Plan together with other evidence documents.



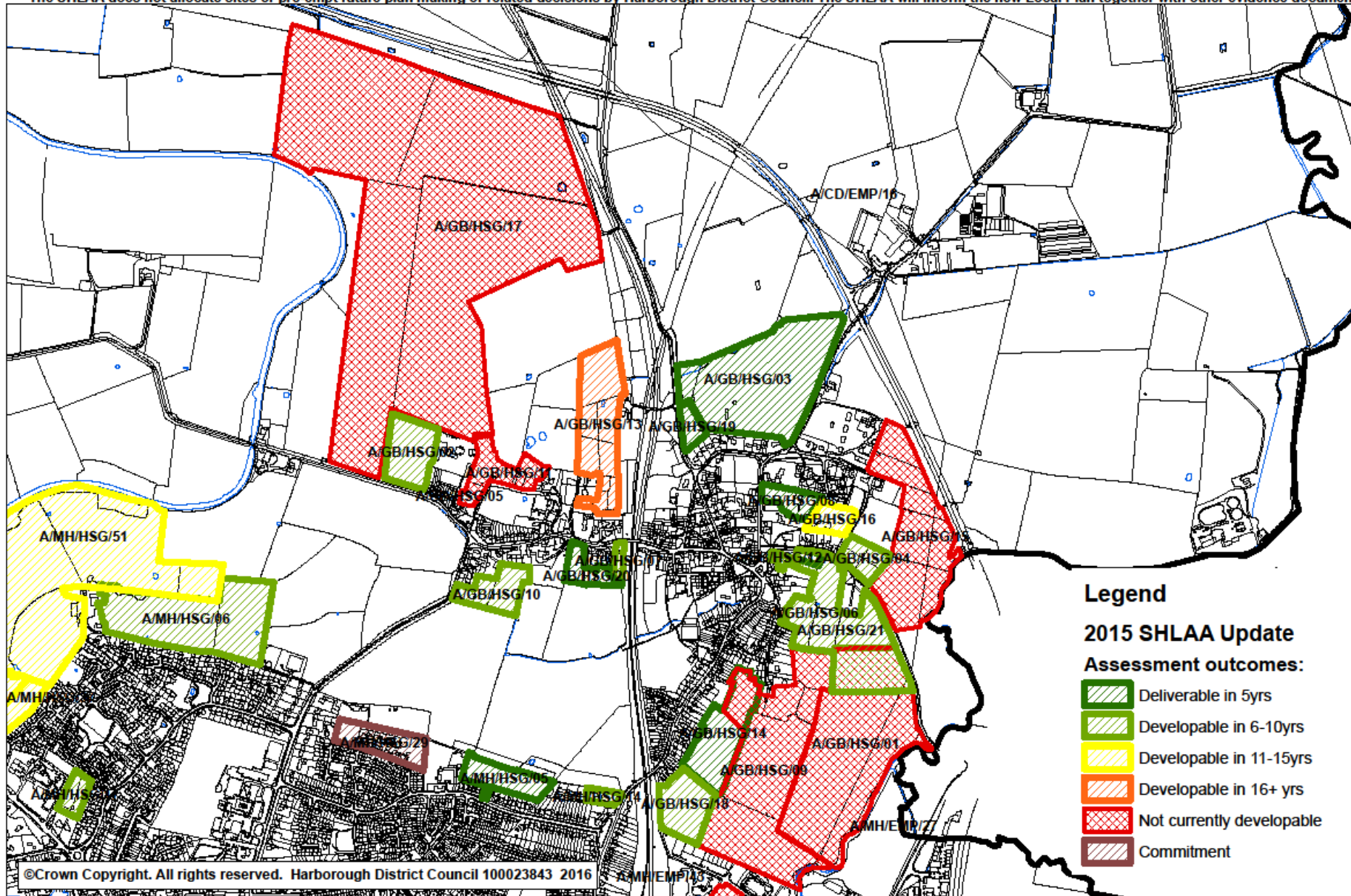
SHLAA 2015 Gilmorton Outcomes

The SHLAA does not allocate sites or pre-empt future plan making or related decisions by Harborough District Council. The SHLAA will inform the new Local Plan together with other evidence documents.



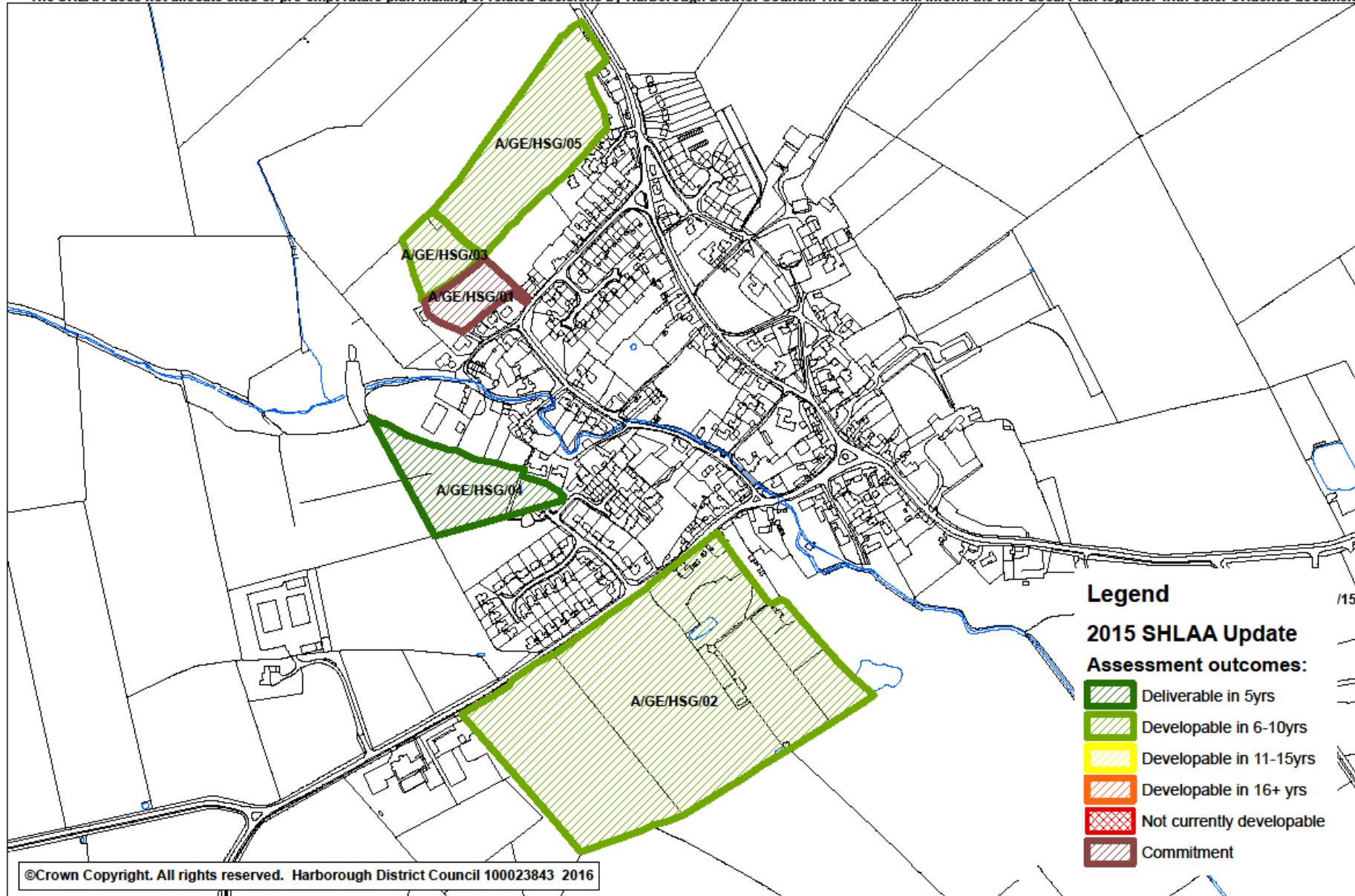
SHLAA 2015 Great Bowden Outcomes

The SHLAA does not allocate sites or pre-empt future plan making or related decisions by Harborough District Council. The SHLAA will inform the new Local Plan together with other evidence documents.



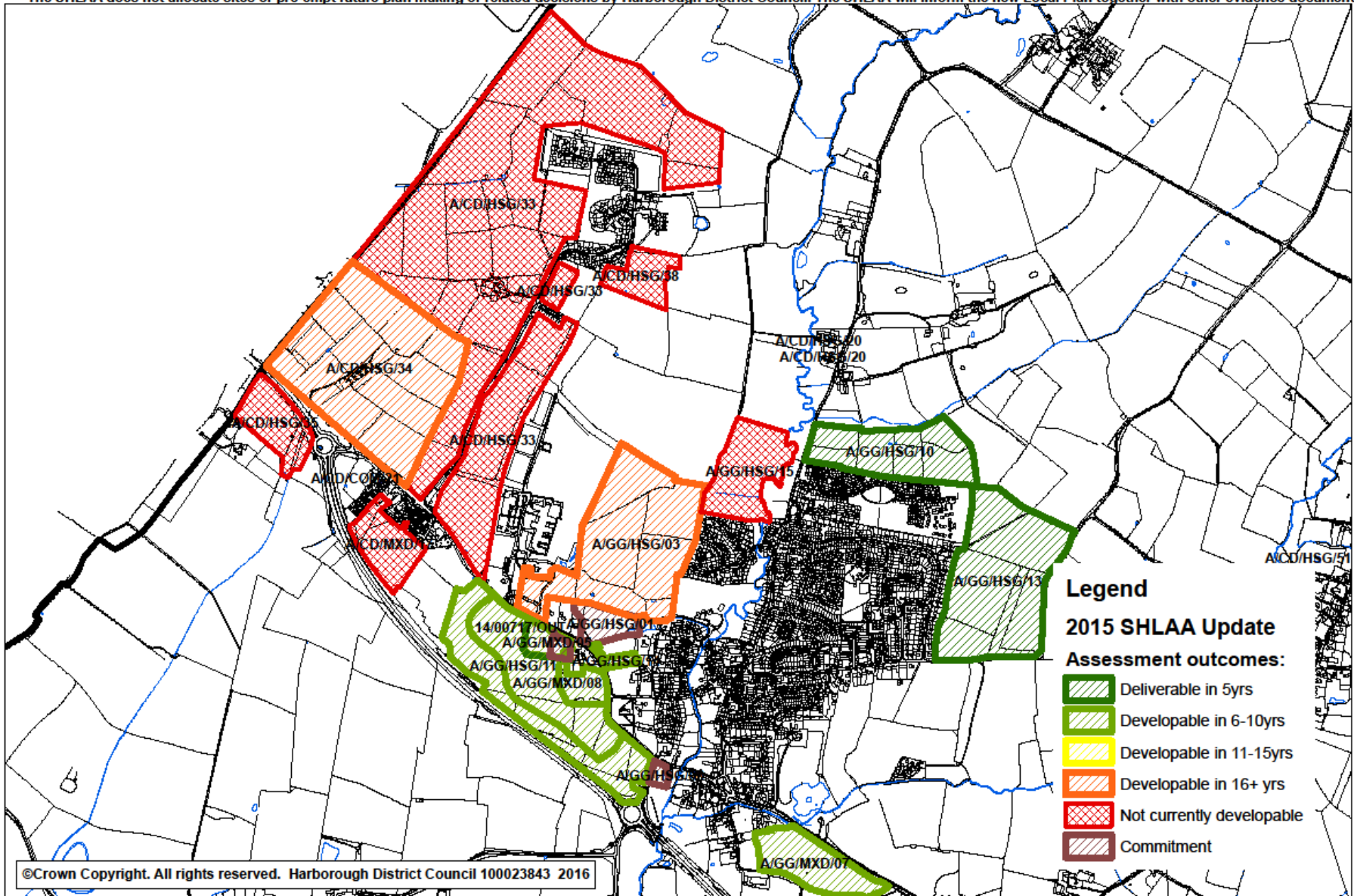
SHLAA 2015 Great Easton Outcomes

The SHLAA does not allocate sites or pre-empt future plan making or related decisions by Harborough District Council. The SHLAA will inform the new Local Plan together with other evidence documents.



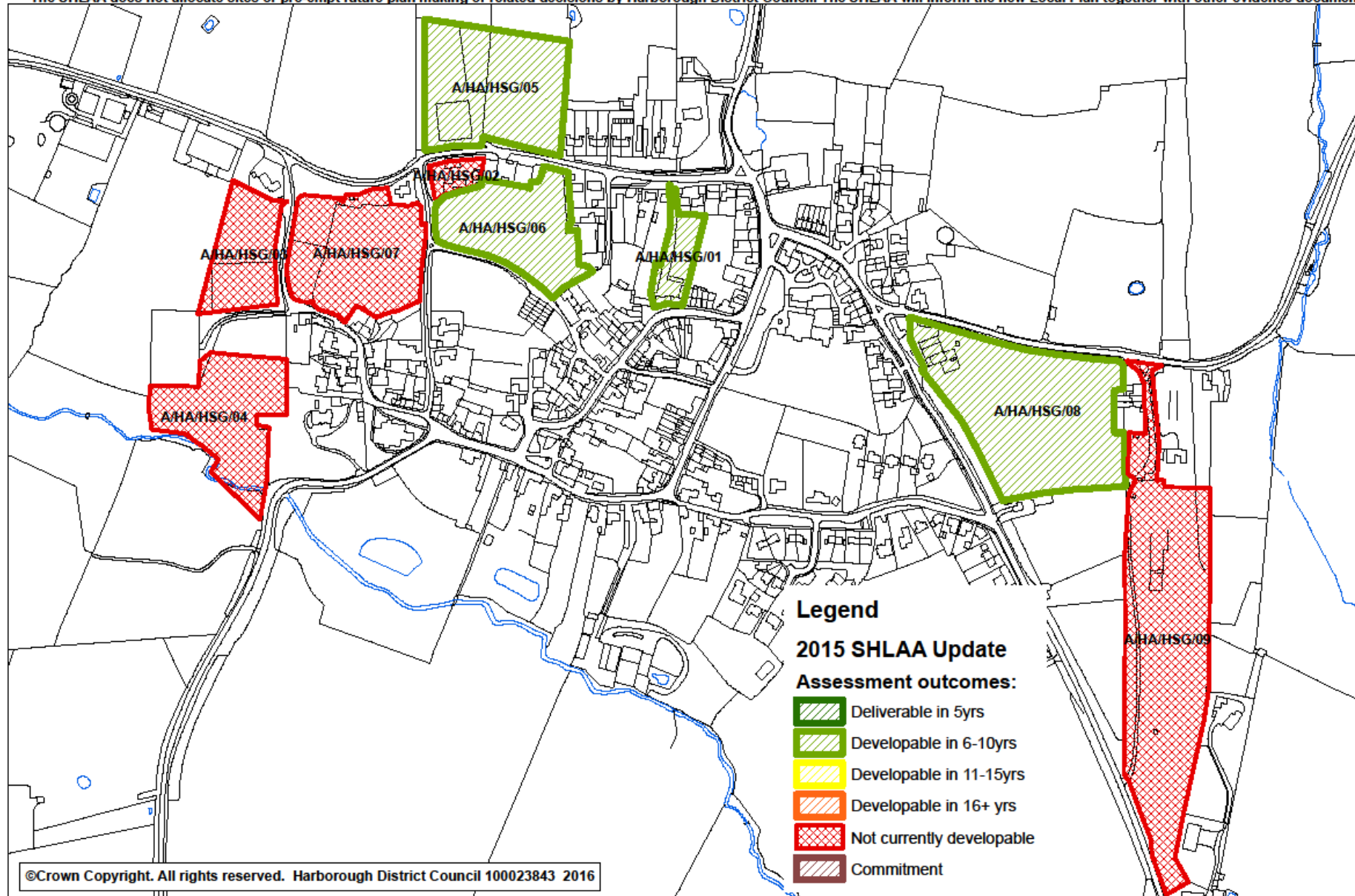
SHLAA 2015 Great Glen Outcomes

The SHLAA does not allocate sites or pre-empt future plan making or related decisions by Harborough District Council. The SHLAA will inform the new Local Plan together with other evidence documents.



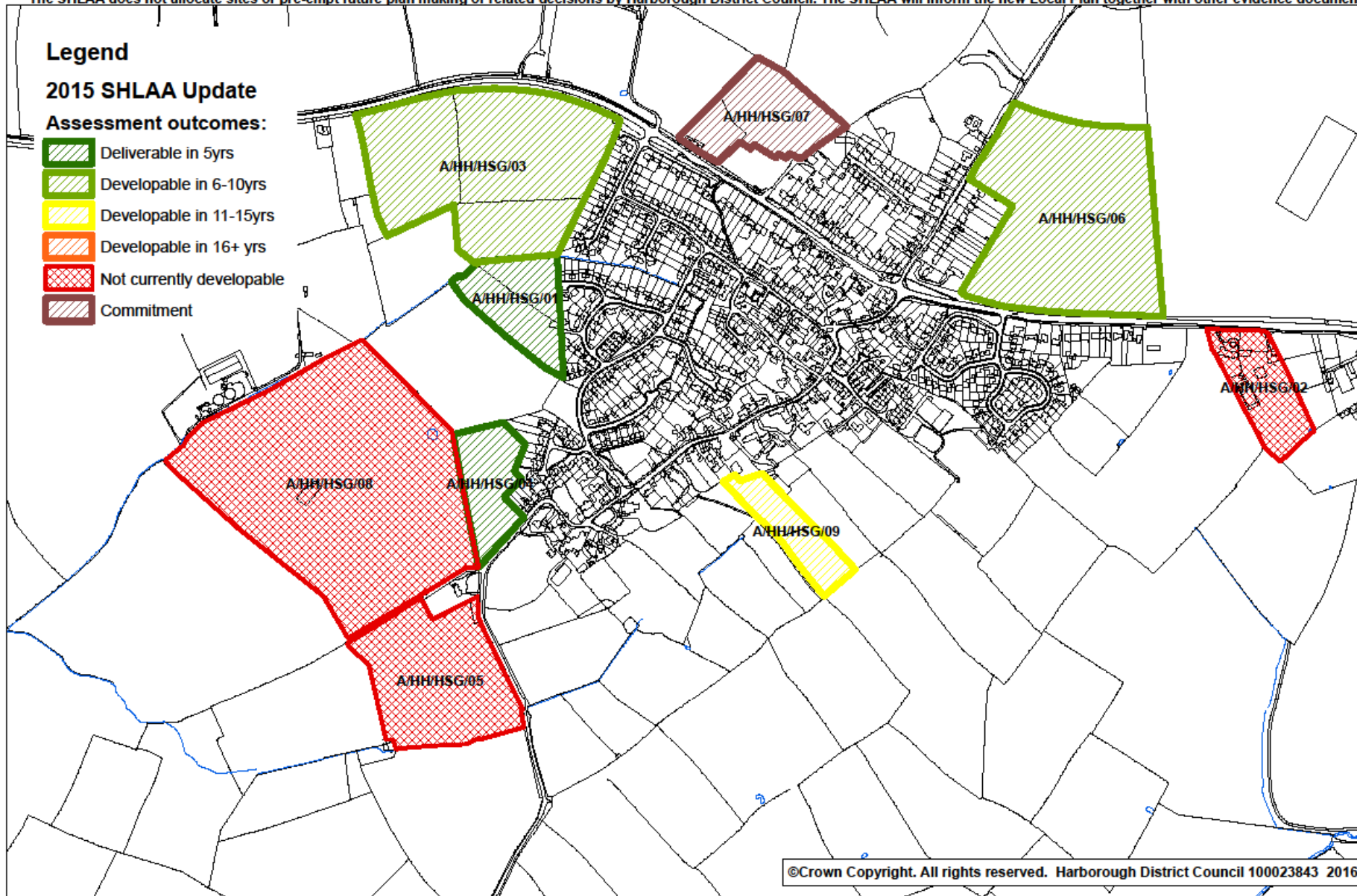
SHLAA 2015 Hallaton Outcomes

The SHLAA does not allocate sites or pre-empt future plan making or related decisions by Harborough District Council. The SHLAA will inform the new Local Plan together with other evidence documents.



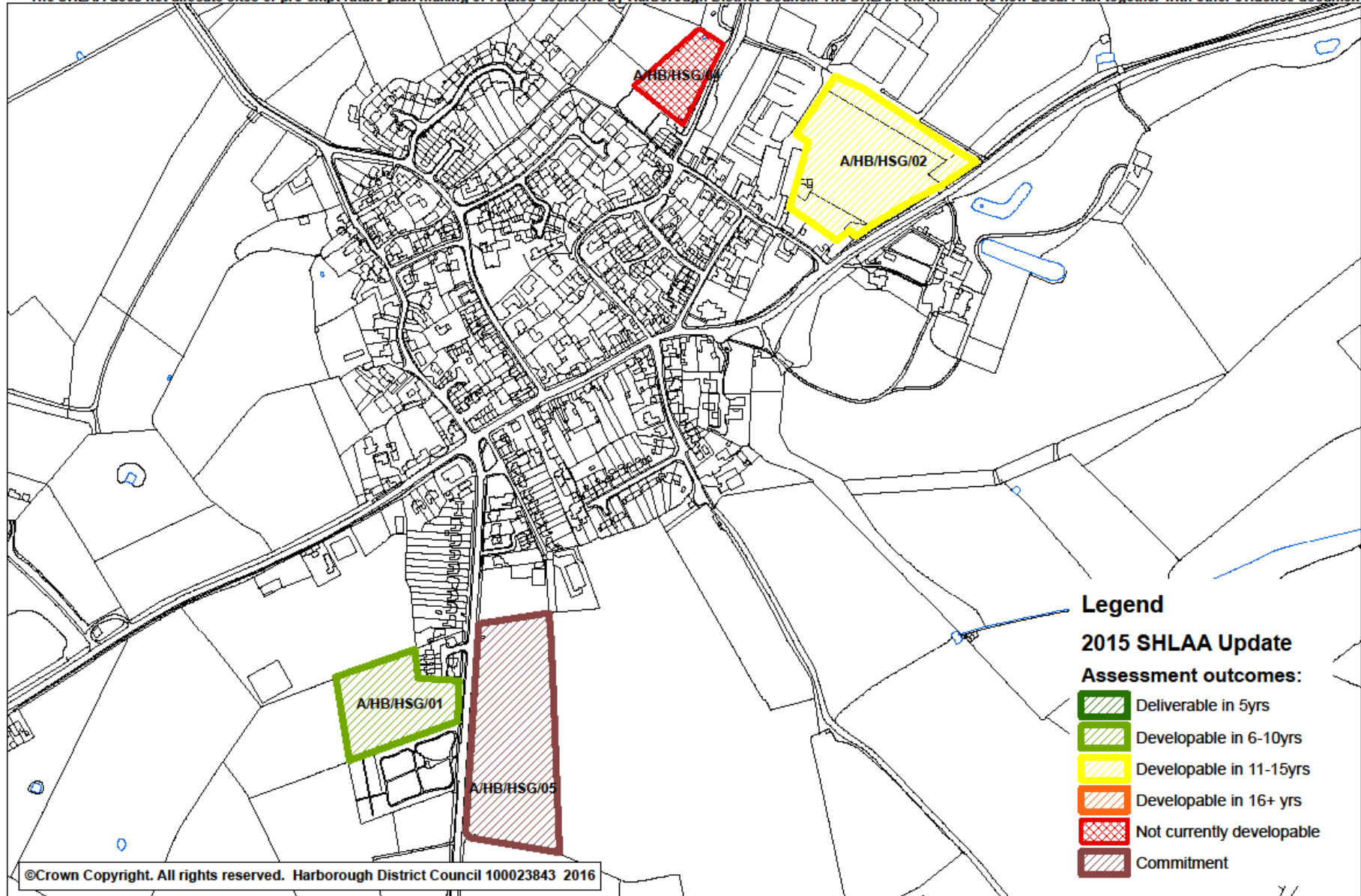
SHLAA 2015 Houghton on the Hill Outcomes

The SHLAA does not allocate sites or pre-empt future plan making or related decisions by Harborough District Council. The SHLAA will inform the new Local Plan together with other evidence documents.



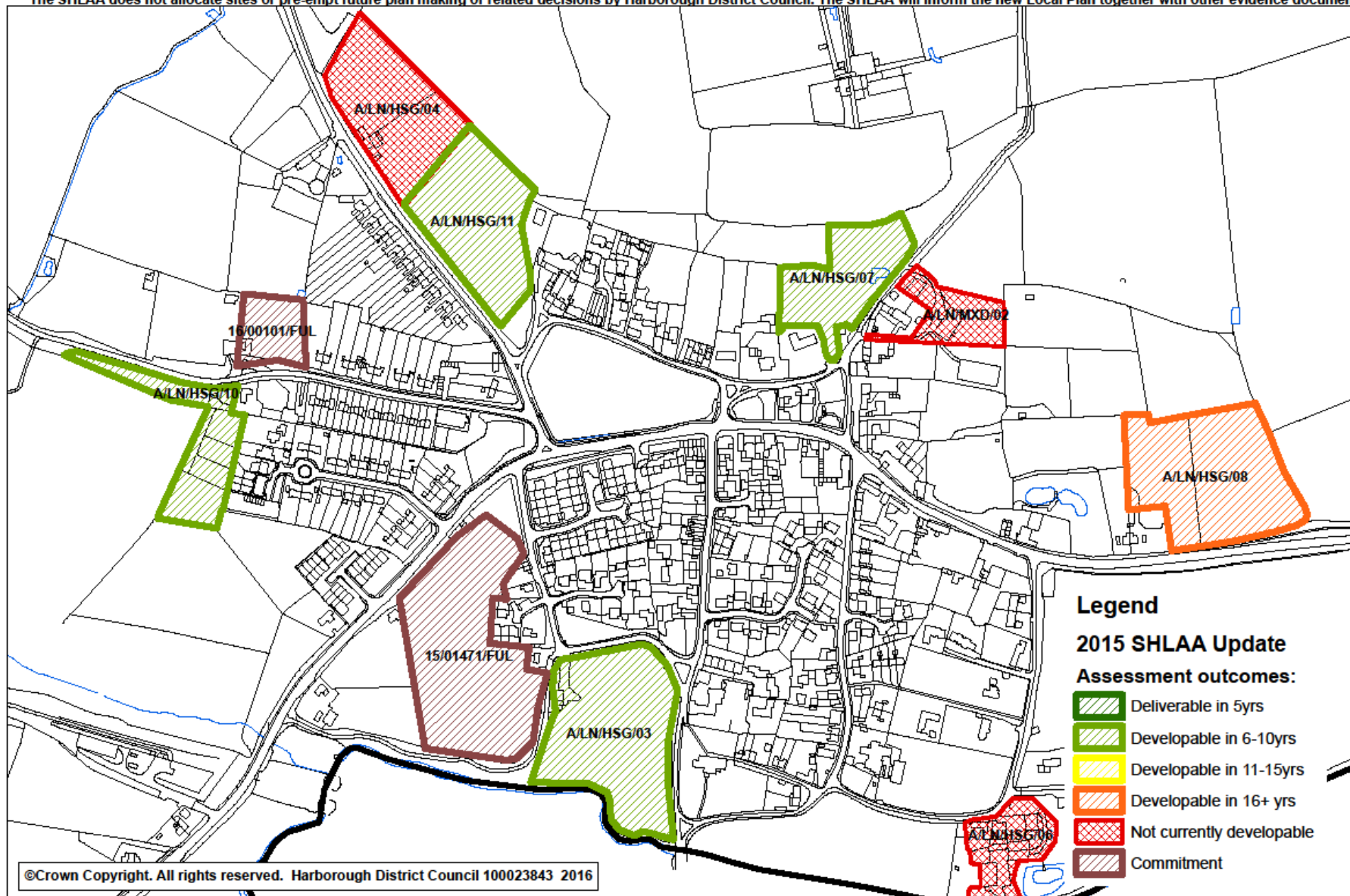
SHLAA 2015 Husbands Bosworth Outcomes

The SHLAA does not allocate sites or pre-empt future plan making or related decisions by Harborough District Council. The SHLAA will inform the new Local Plan together with other evidence documents.



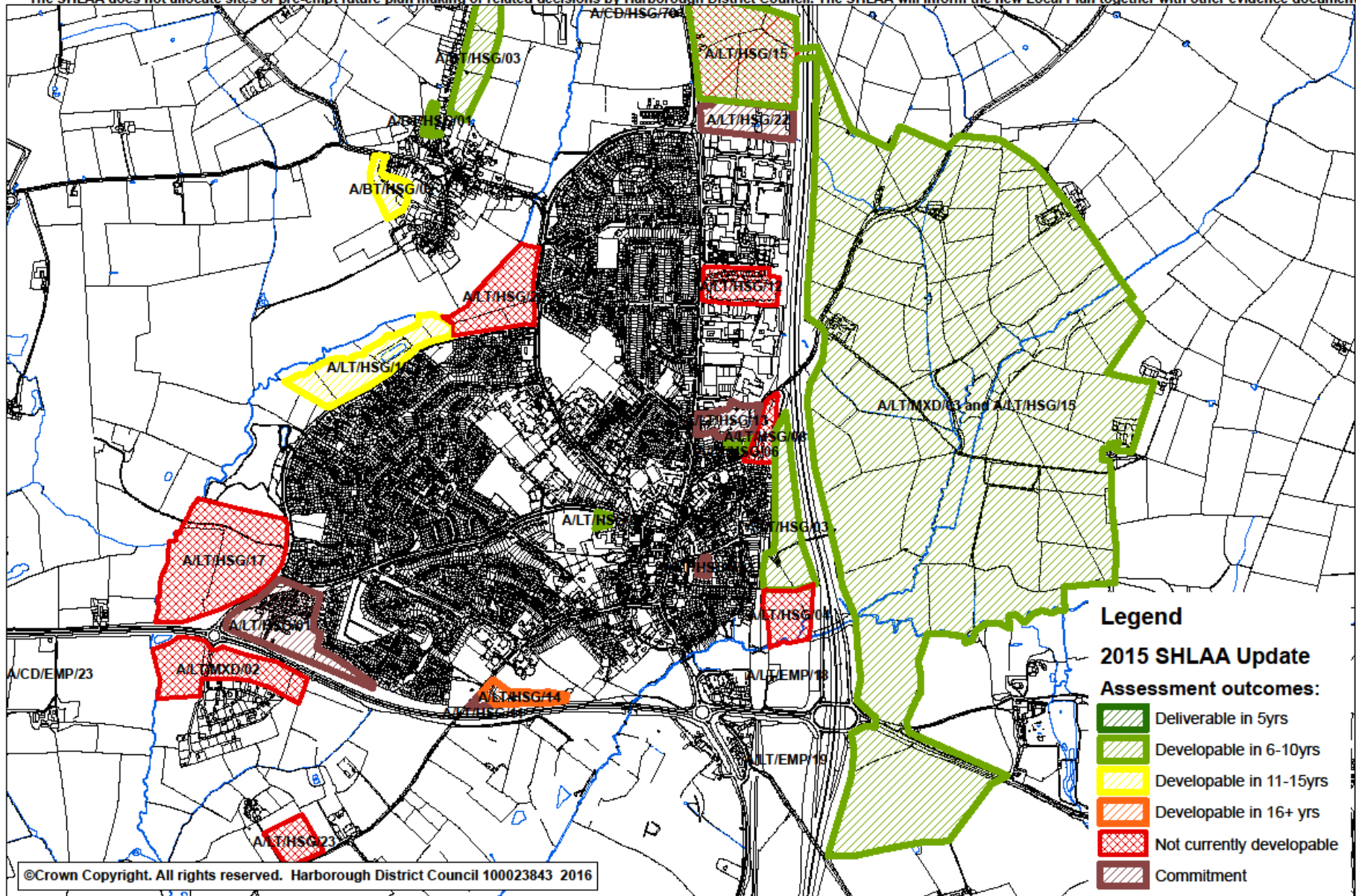
SHLAA 2015 Lubenham Outcomes

The SHLAA does not allocate sites or pre-empt future plan making or related decisions by Harborough District Council. The SHLAA will inform the new Local Plan together with other evidence documents.



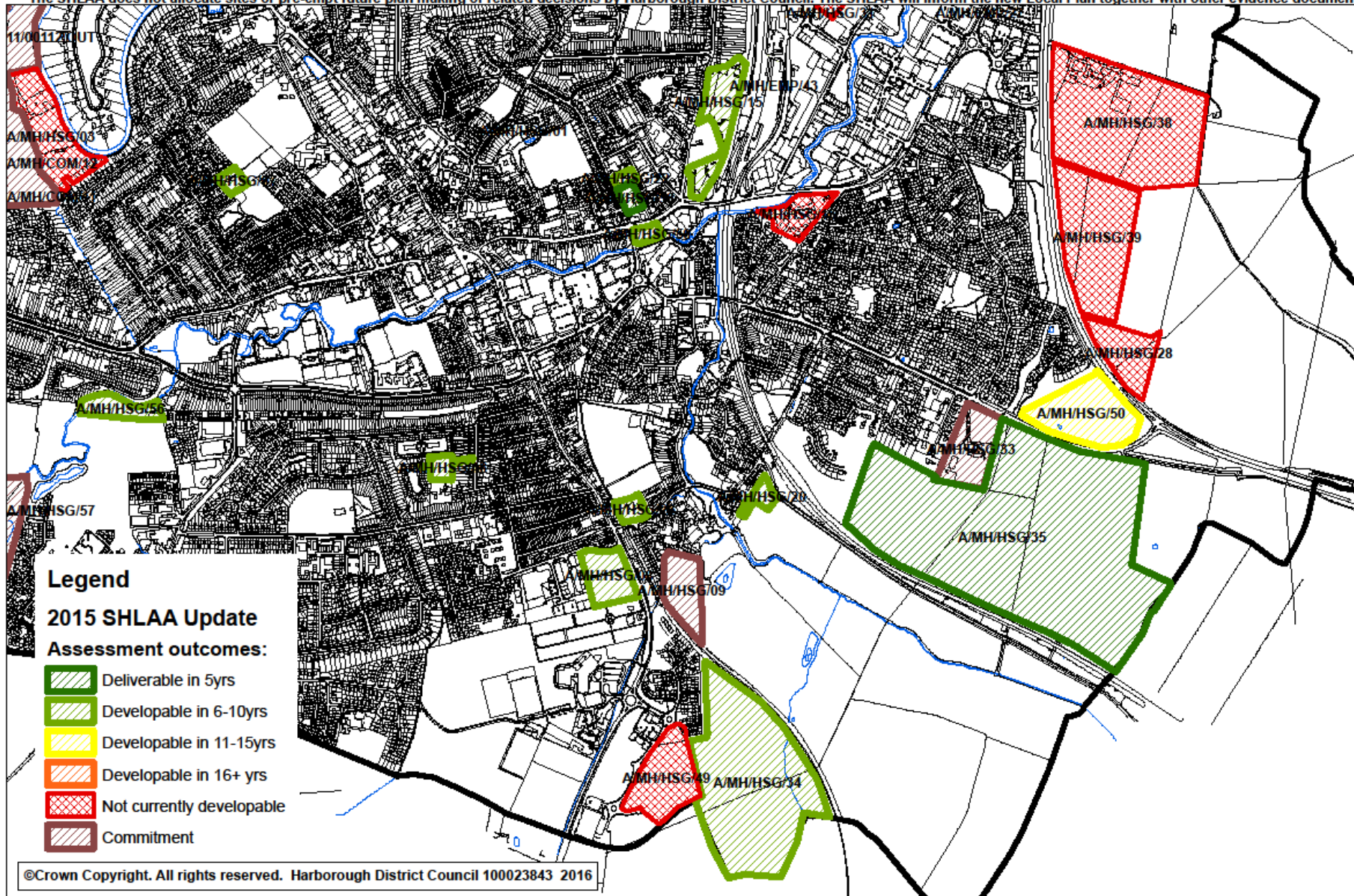
SHLAA 2015 Lutterworth Outcomes

The SHLAA does not allocate sites or pre-empt future plan making or related decisions by Harborough District Council. The SHLAA will inform the new Local Plan together with other evidence documents.



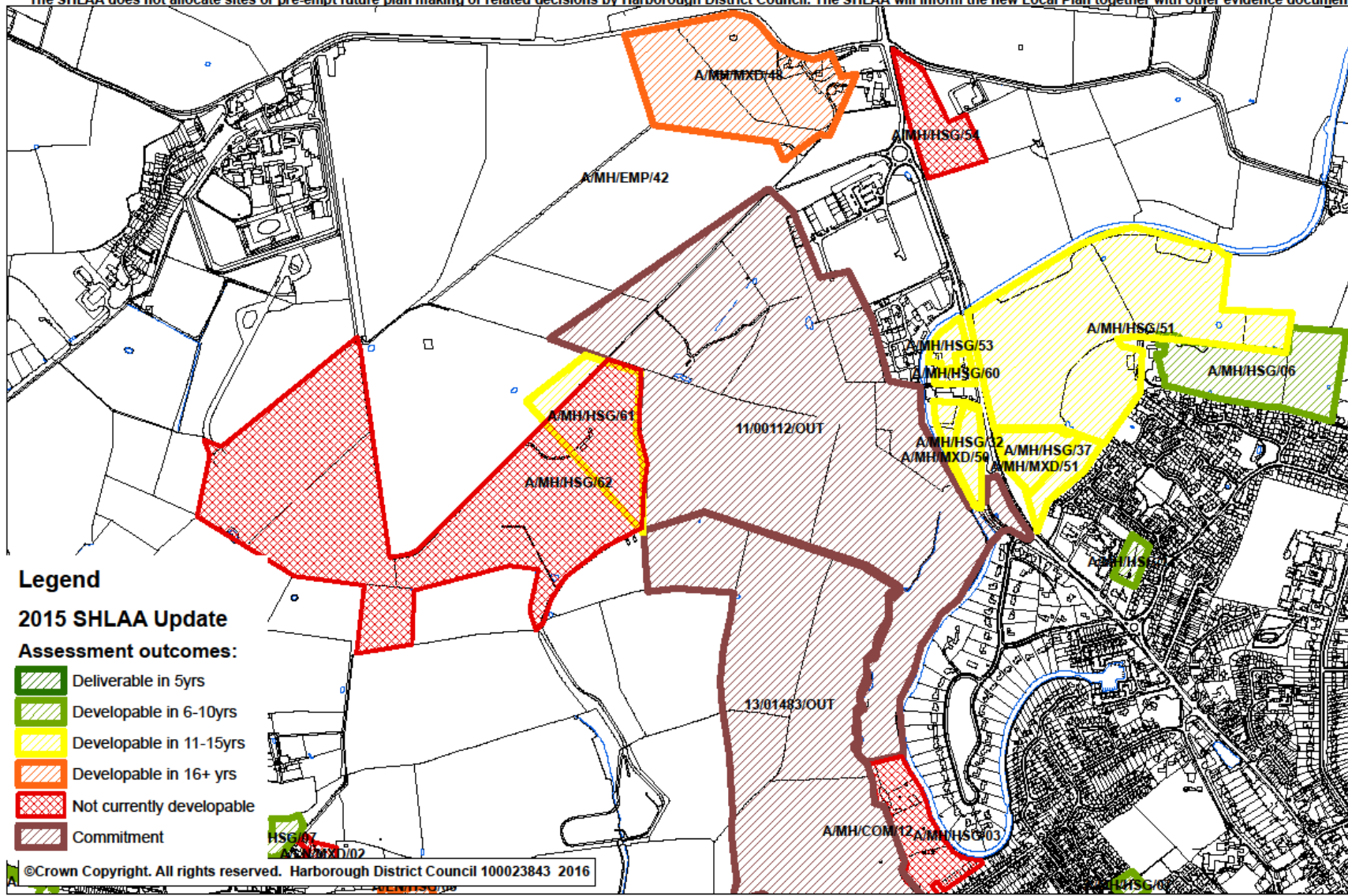
SHLAA 2015 Market Harborough (eastern sites) Outcomes

The SHLAA does not allocate sites or pre-empt future plan making or related decisions by Harborough District Council. The SHLAA will inform the new Local Plan together with other evidence documents.



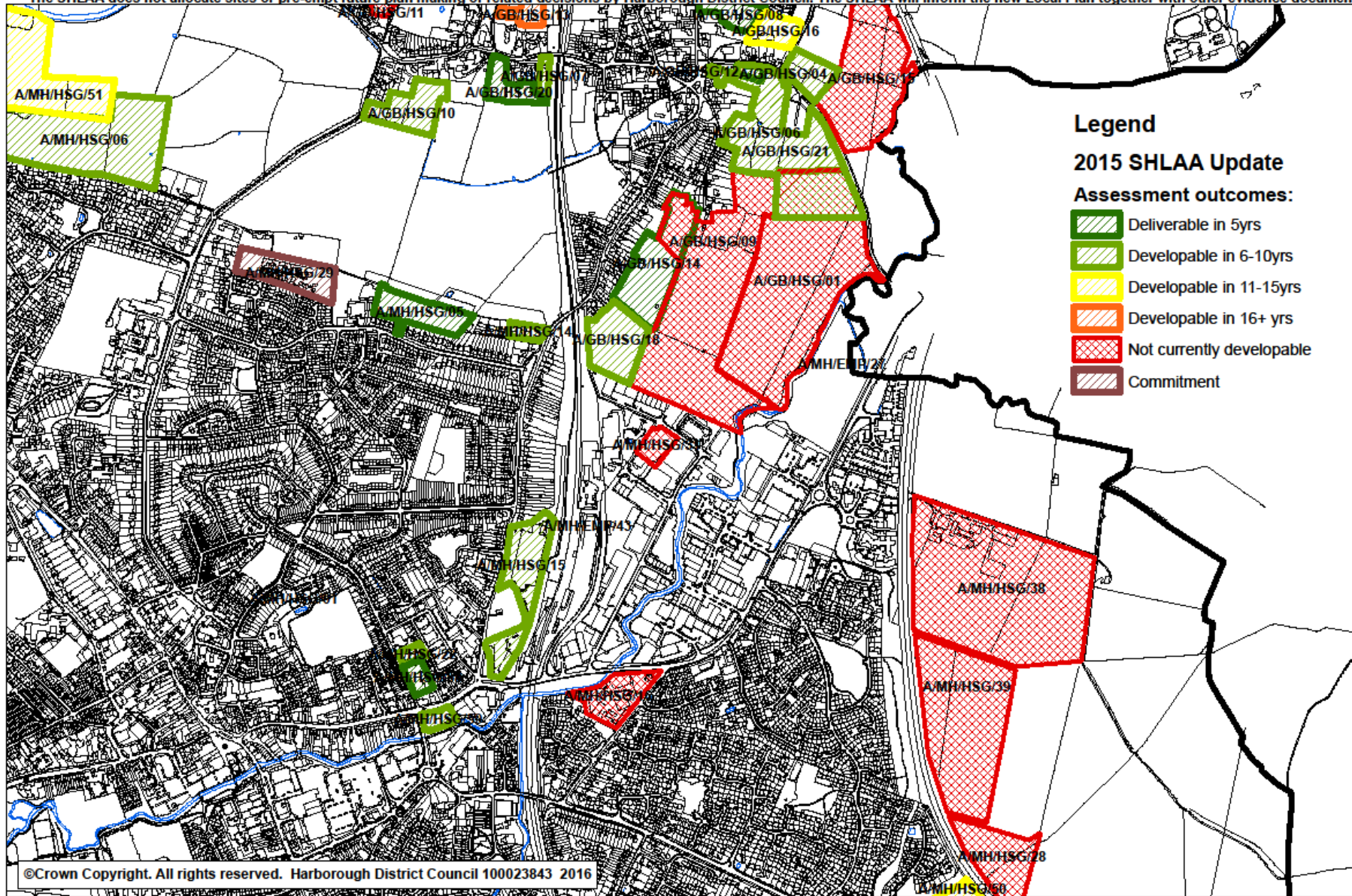
SHLAA 2015 Market Harborough (north western) Outcomes

The SHLAA does not allocate sites or pre-empt future plan making or related decisions by Harborough District Council. The SHLAA will inform the new Local Plan together with other evidence documents.



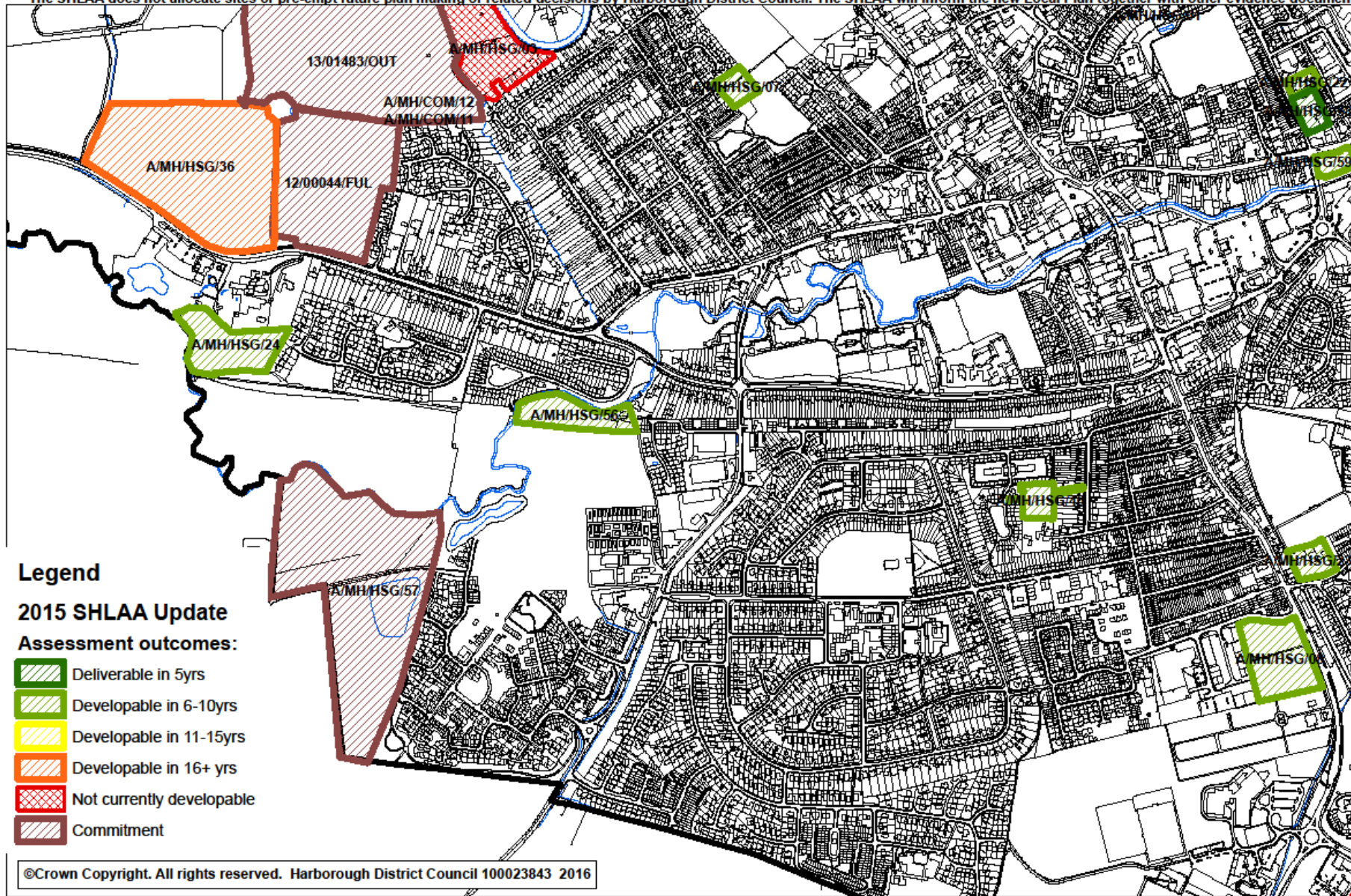
SHLAA 2015 Market Harborough (north eastern sites) Outcomes

The SHLAA does not allocate sites or pre-empt future plan making or related decisions by Harborough District Council. The SHLAA will inform the new Local Plan together with other evidence documents.



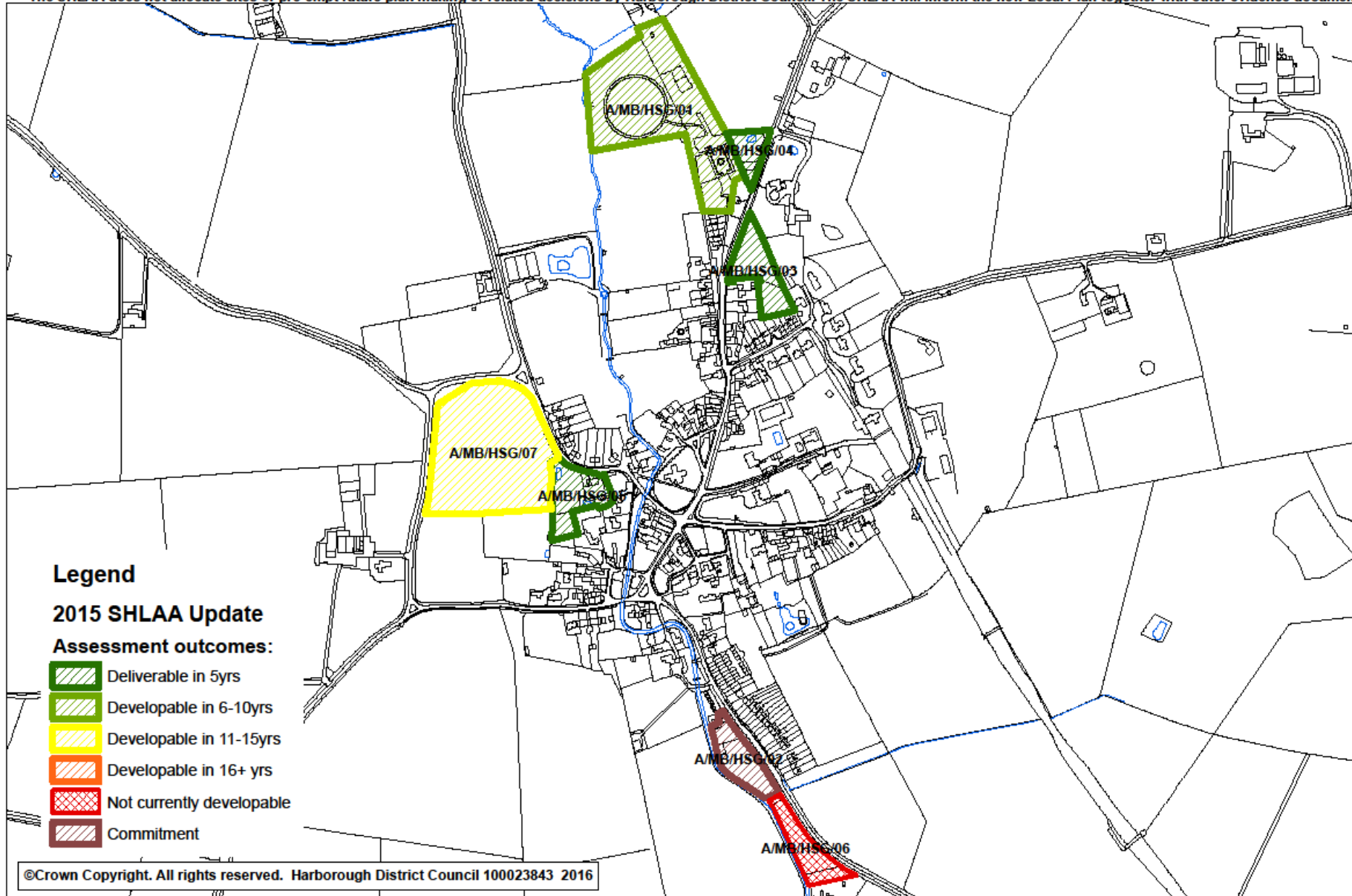
SHLAA 2015 Market Harbourgh (southern sites) Outcomes

The SHLAA does not allocate sites or pre-empt future plan making or related decisions by Harbourgh District Council. The SHLAA will inform the new Local Plan together with other evidence documents.



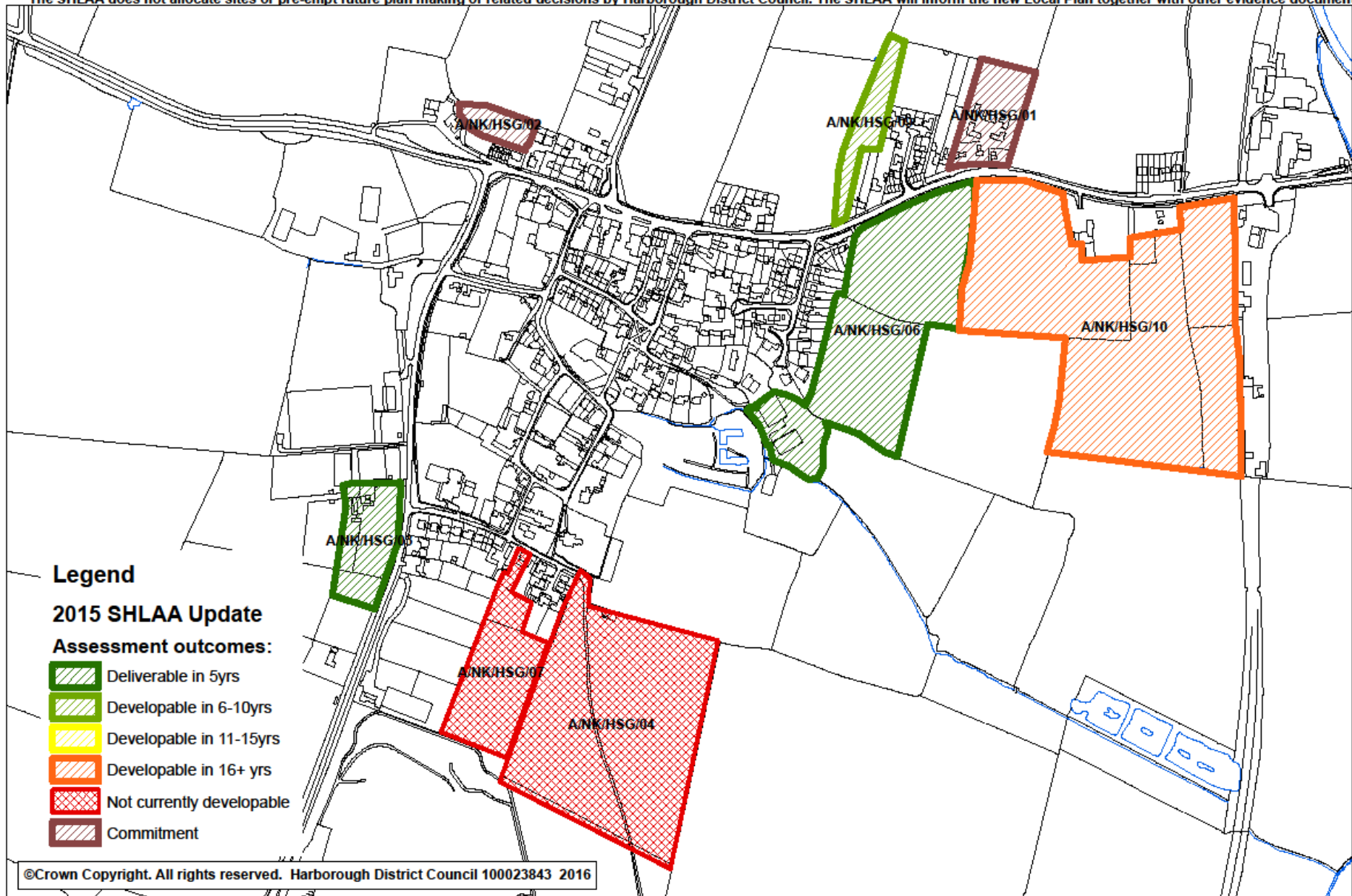
SHLAA 2015 Medbourne Outcomes

The SHLAA does not allocate sites or pre-empt future plan making or related decisions by Harborough District Council. The SHLAA will inform the new Local Plan together with other evidence documents.



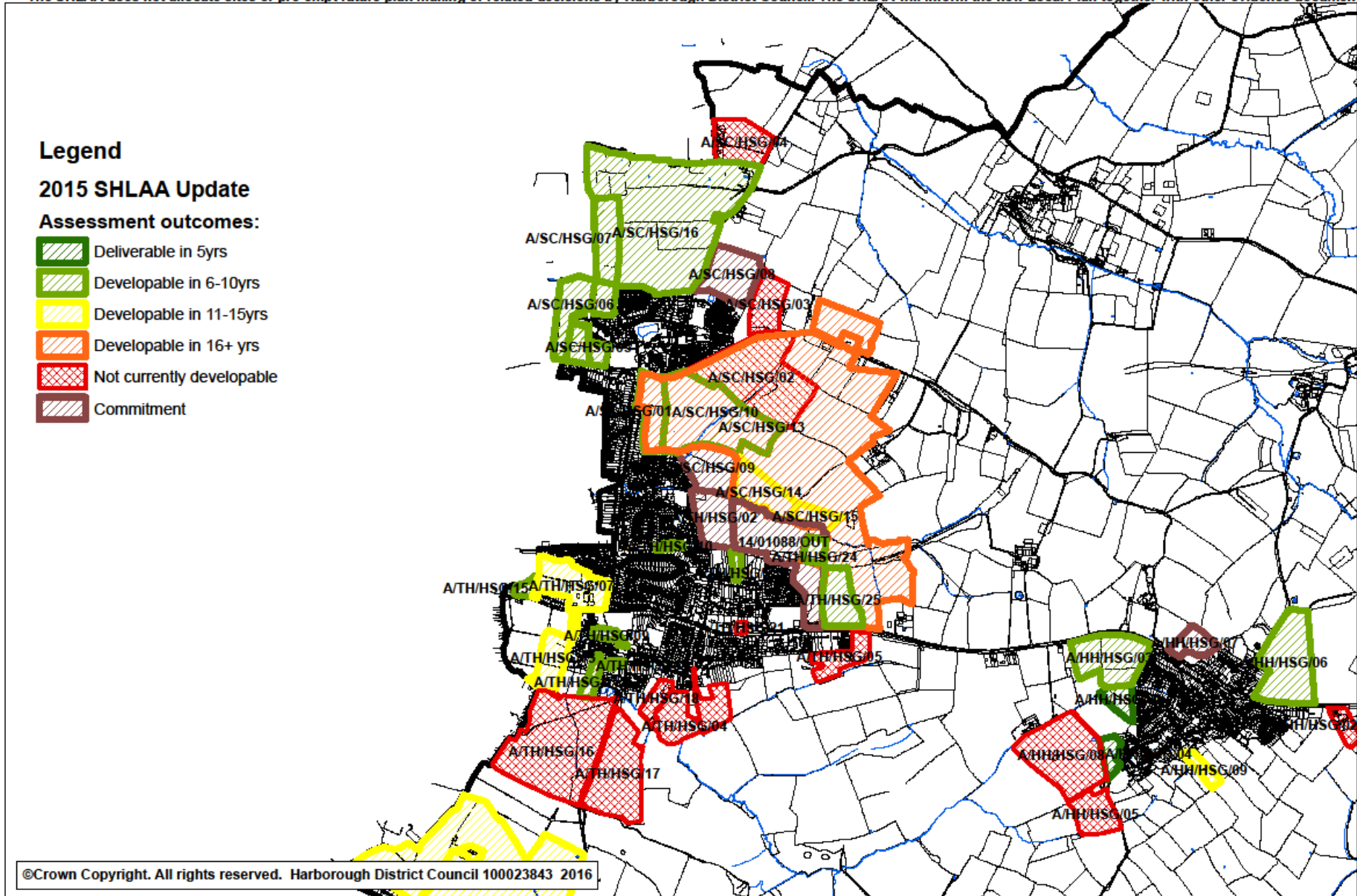
SHLAA 2015 North Kilworth Outcomes

The SHLAA does not allocate sites or pre-empt future plan making or related decisions by Harborough District Council. The SHLAA will inform the new Local Plan together with other evidence documents.



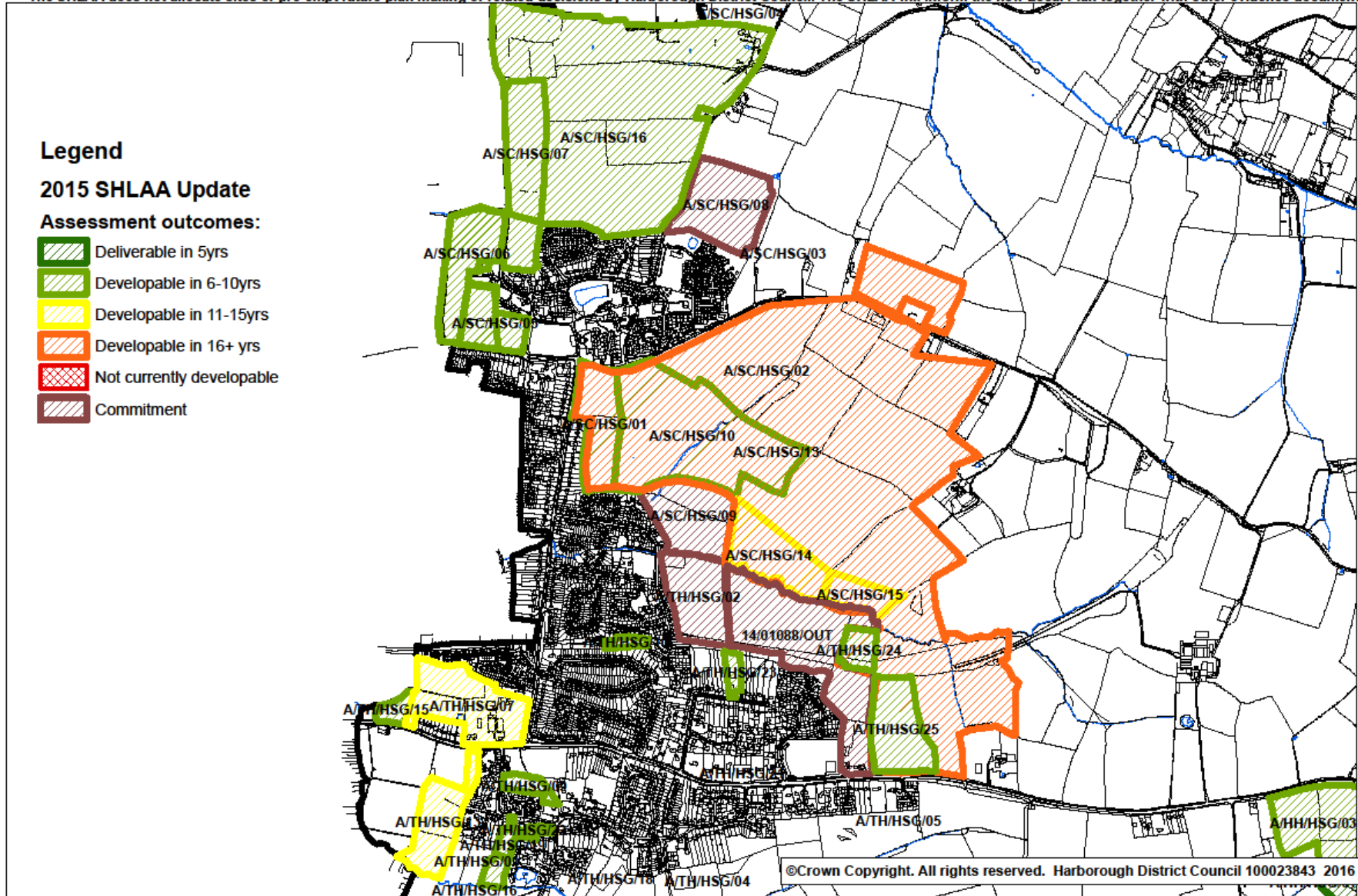
SHLAA 2015 Scraftoff/Thurnby/Bushby Outcomes

The SHLAA does not allocate sites or pre-empt future plan making or related decisions by Harborough District Council. The SHLAA will inform the new Local Plan together with other evidence documents.



SHLAA 2015 Scraptoft/Thurnby/Bushby Developable Outcomes

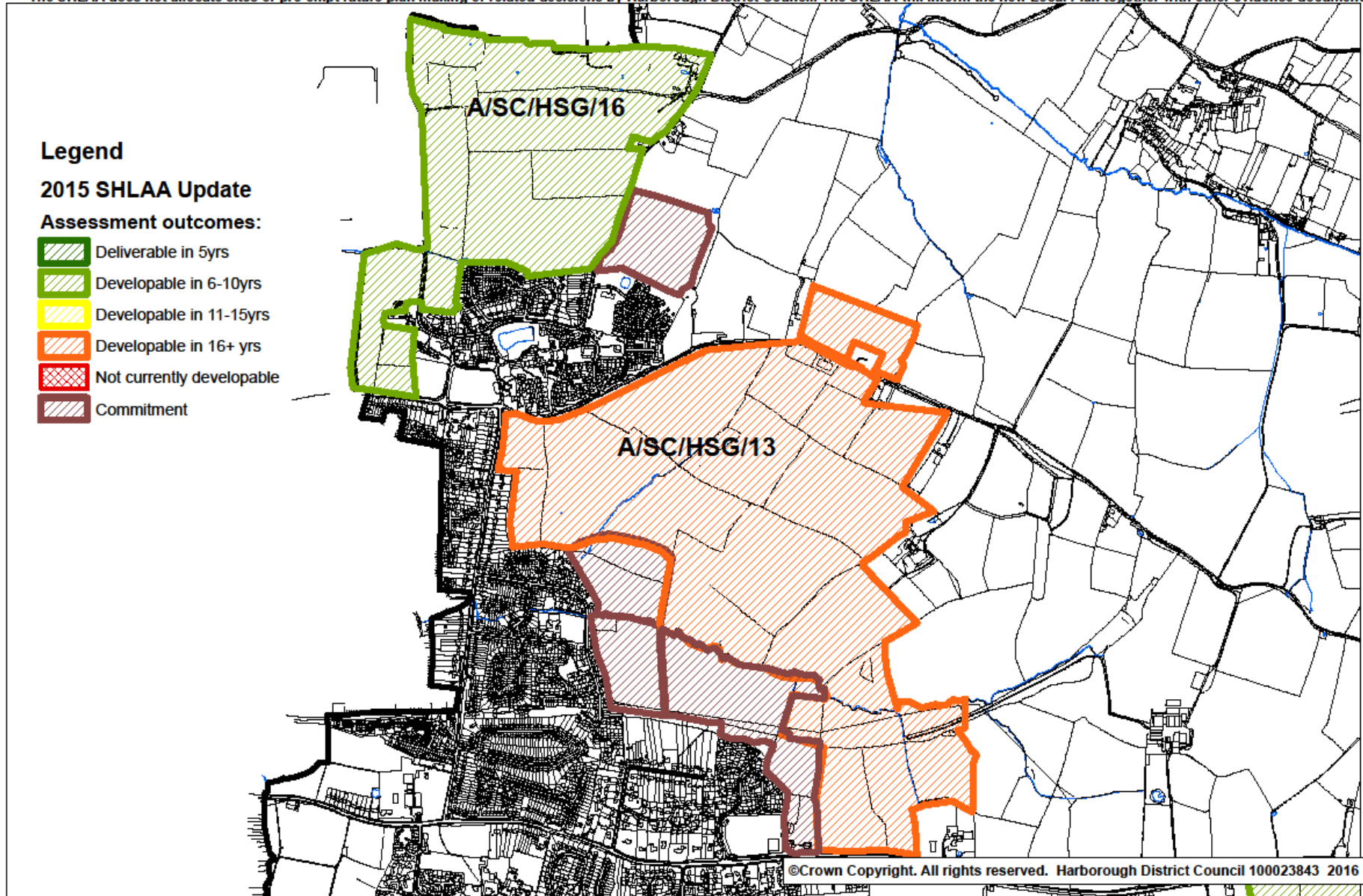
The SHLAA does not allocate sites or pre-empt future plan making or related decisions by Harborough District Council. The SHLAA will inform the new Local Plan together with other evidence documents.



SHLAA 2015

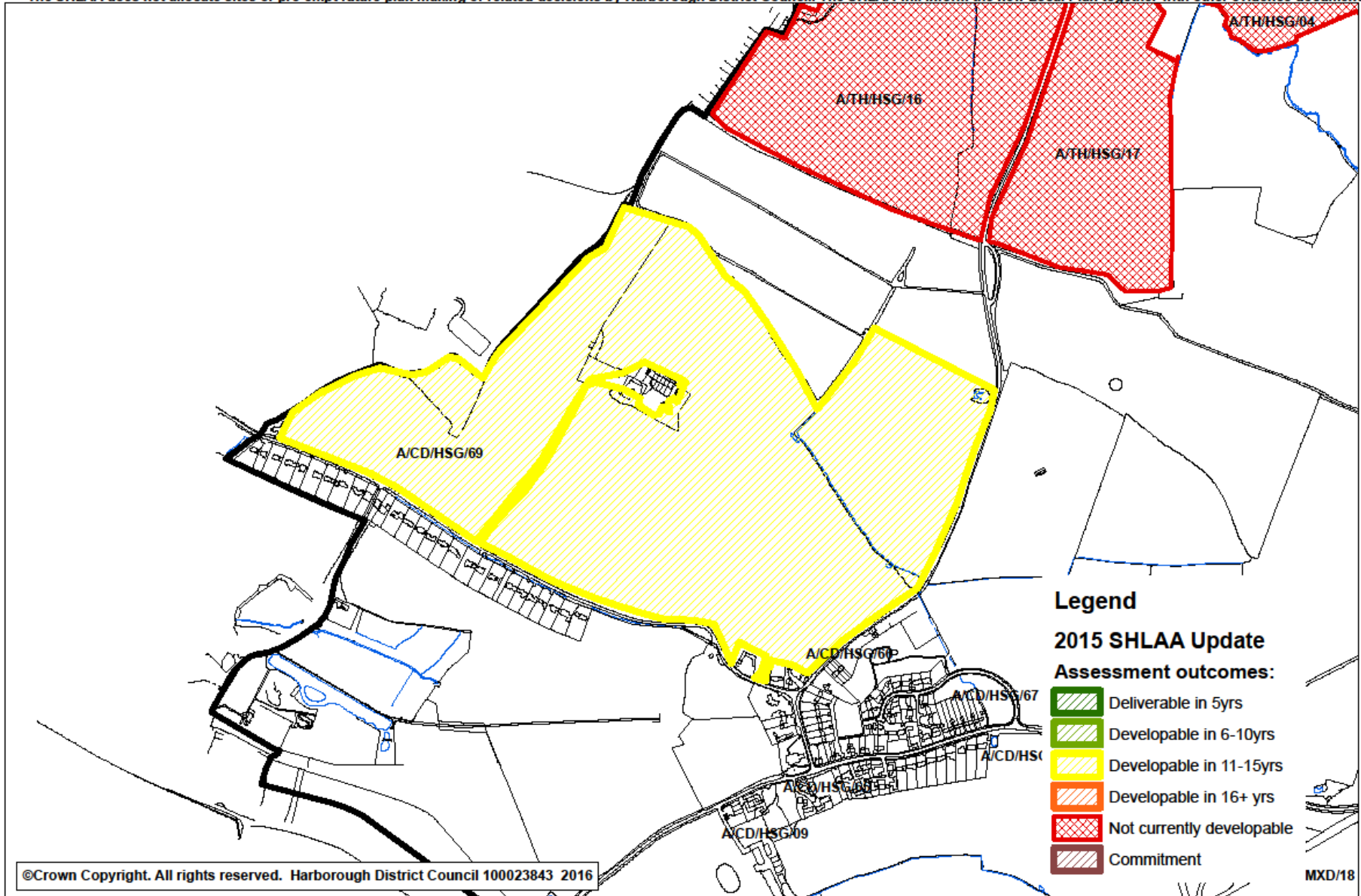
Scraptoft/Thurnby/Bushby - Outcomes for Potential Strategic Development Areas

The SHLAA does not allocate sites or pre-empt future plan making or related decisions by Harborough District Council. The SHLAA will inform the new Local Plan together with other evidence documents.



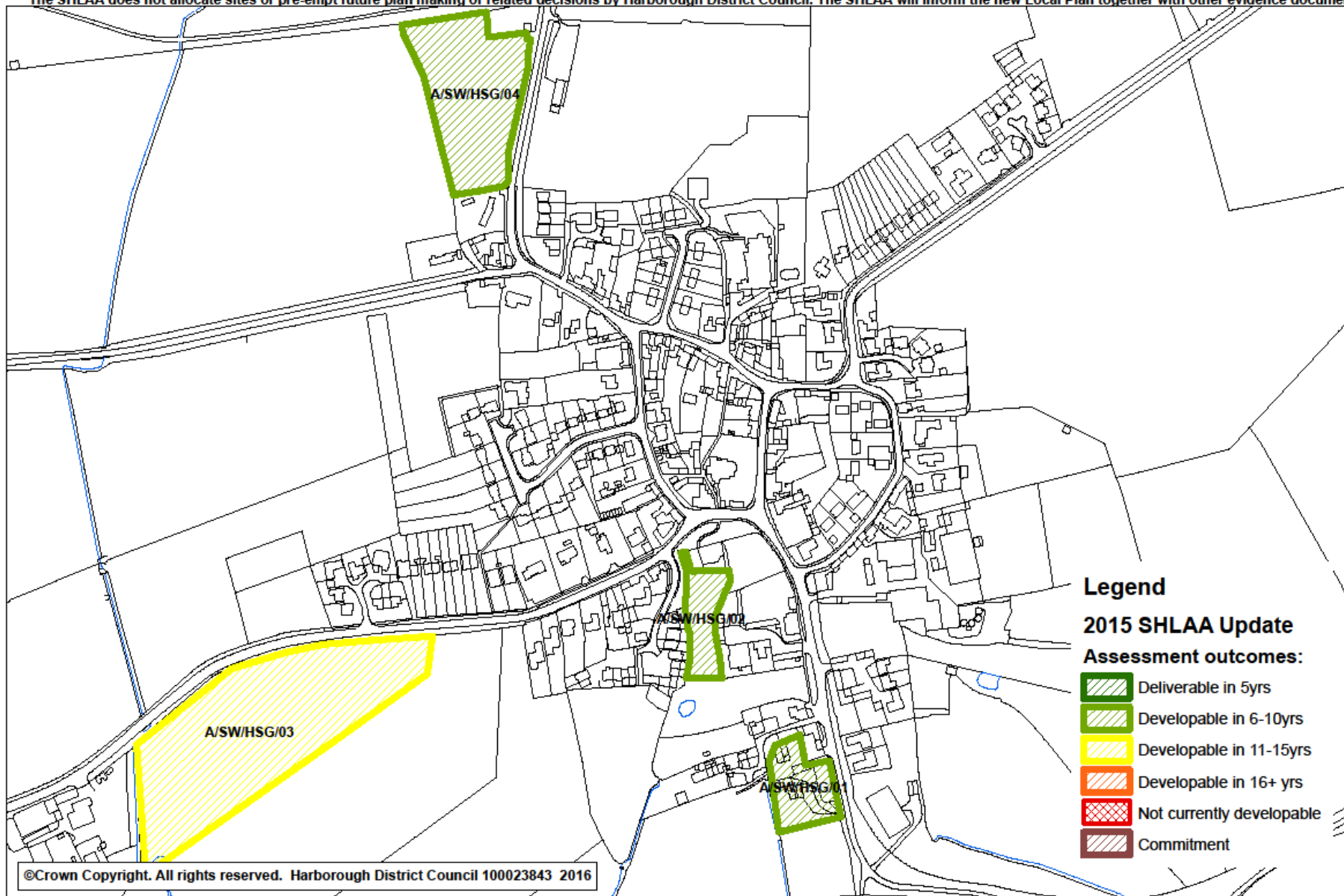
SHLAA 2015 Stoughton / Edge of Leicester Outcomes

The SHLAA does not allocate sites or pre-empt future plan making or related decisions by Harborough District Council. The SHLAA will inform the new Local Plan together with other evidence documents.



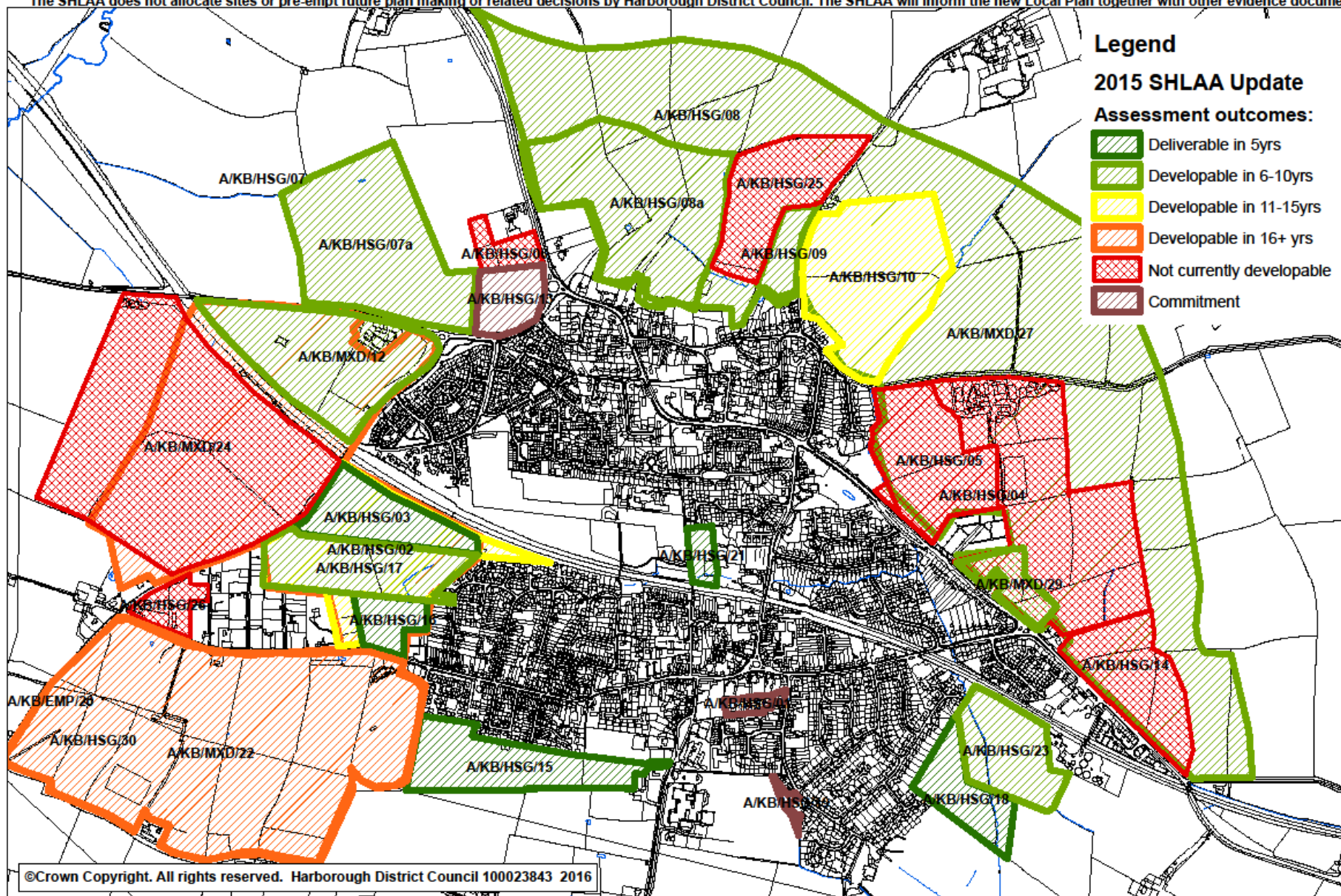
SHLAA 2015 Swinford Outcomes

The SHLAA does not allocate sites or pre-empt future plan making or related decisions by Harborough District Council. The SHLAA will inform the new Local Plan together with other evidence documents.



SHLAA 2015 The Kibworths Outcomes

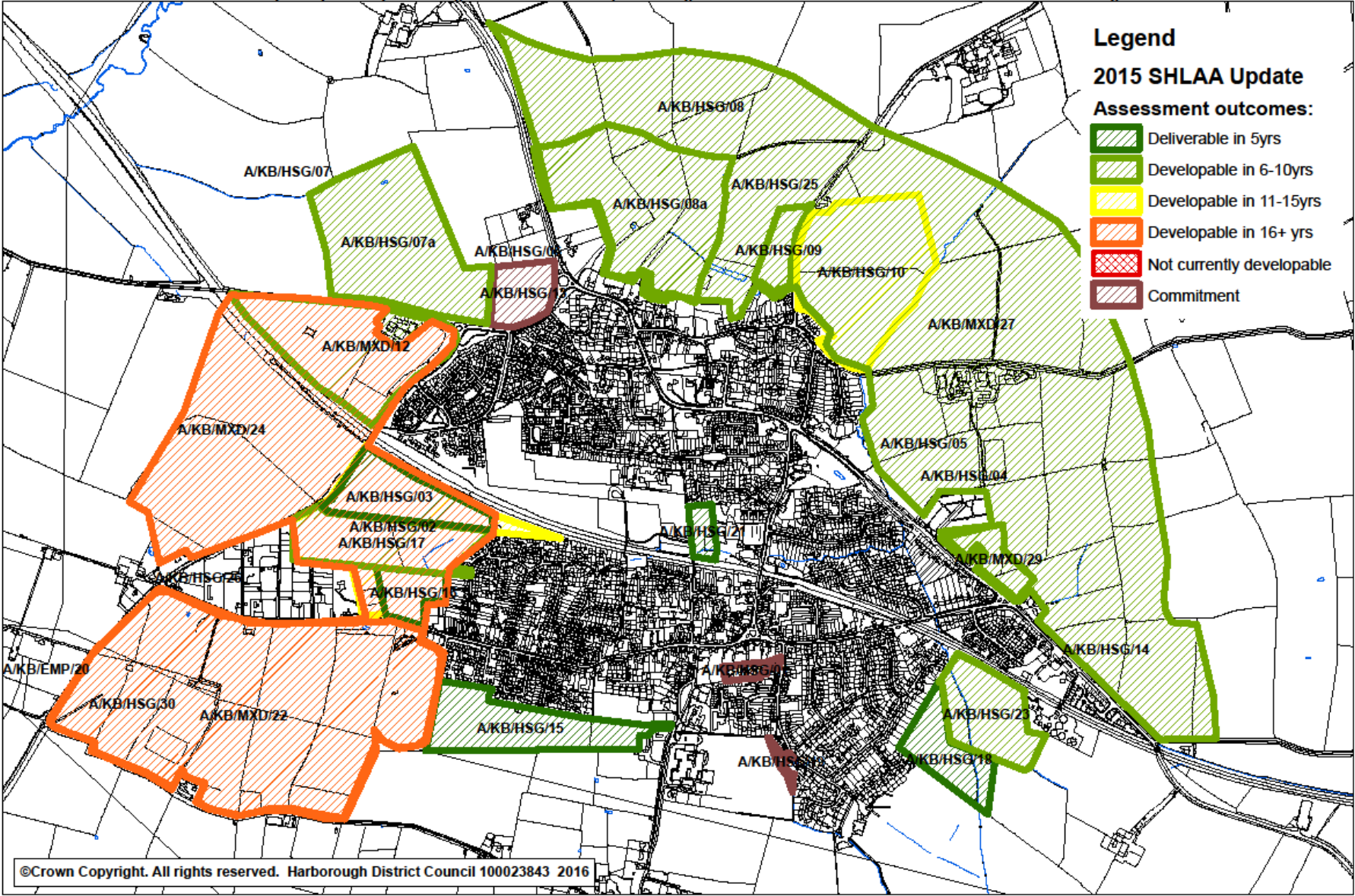
The SHLAA does not allocate sites or pre-empt future plan making or related decisions by Harborough District Council. The SHLAA will inform the new Local Plan together with other evidence documents.



©Crown Copyright. All rights reserved. Harborough District Council 100023843 2016

SHLAA 2015 The Kibworths Developable Outcomes

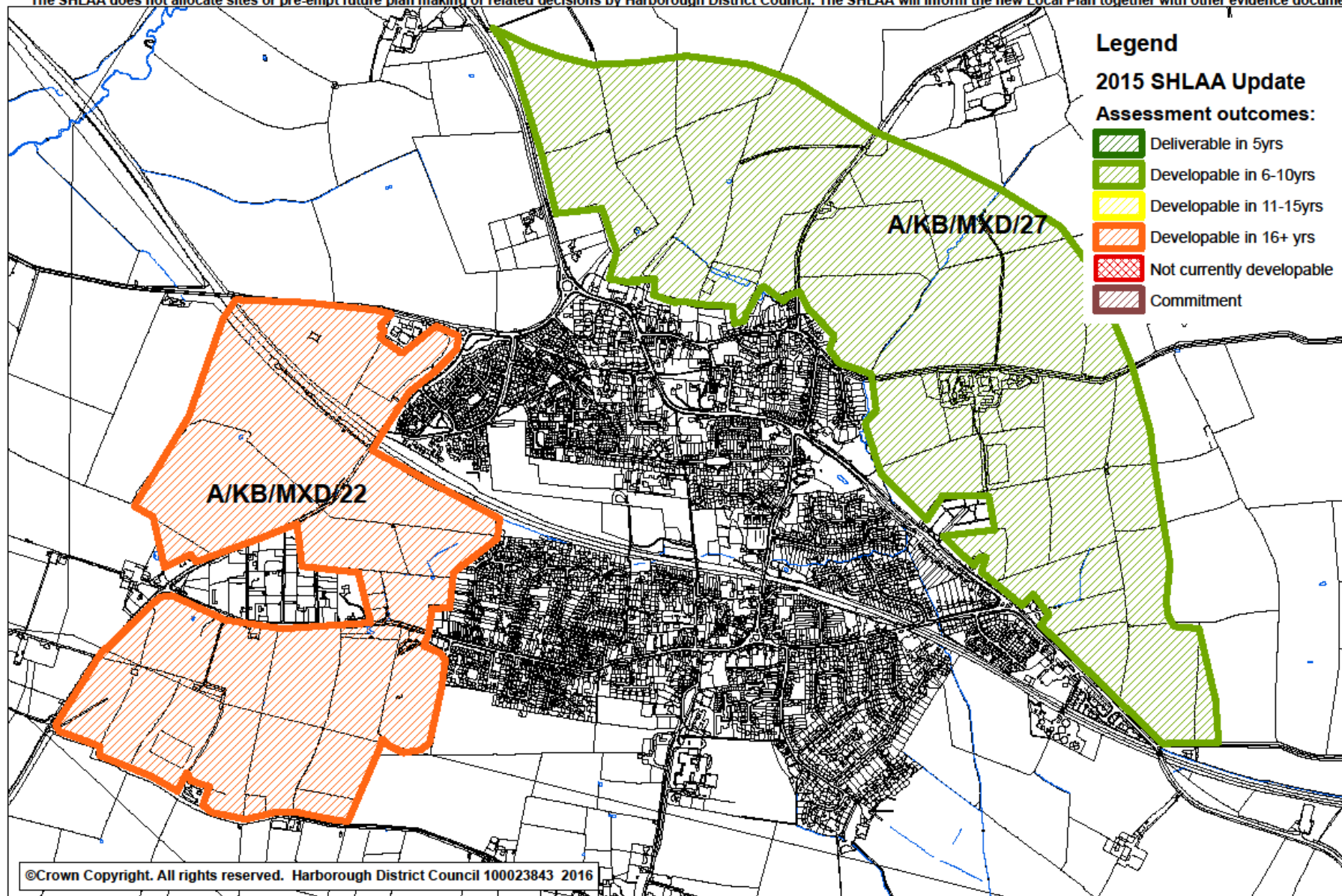
The SHLAA does not allocate sites or pre-empt future plan making or related decisions by Harborough District Council. The SHLAA will inform the new Local Plan together with other evidence documents.



SHLAA 2015

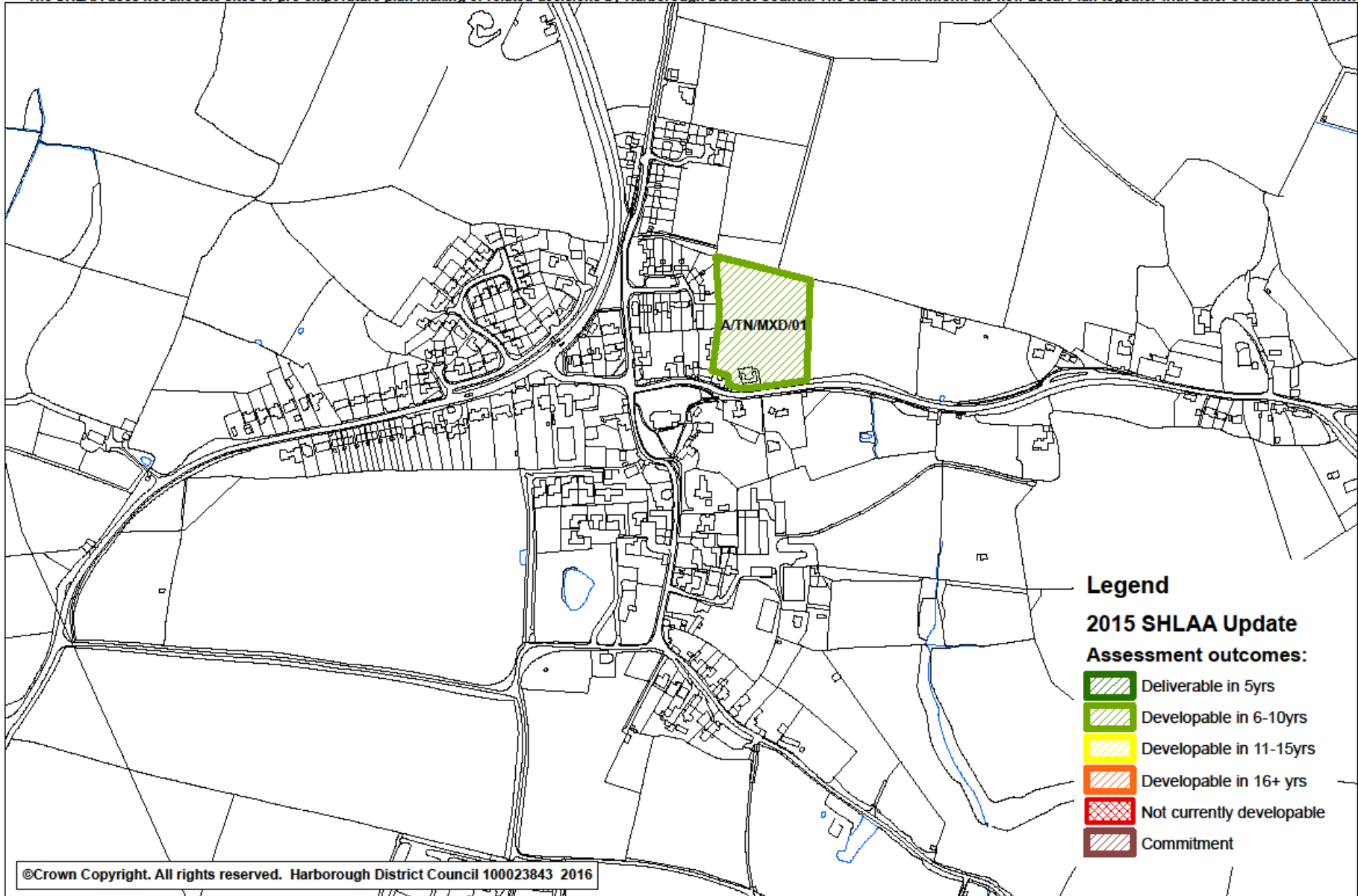
The Kibworths - Outcomes for Potential Strategic Development Areas

The SHLAA does not allocate sites or pre-empt future plan making or related decisions by Harborough District Council. The SHLAA will inform the new Local Plan together with other evidence documents.



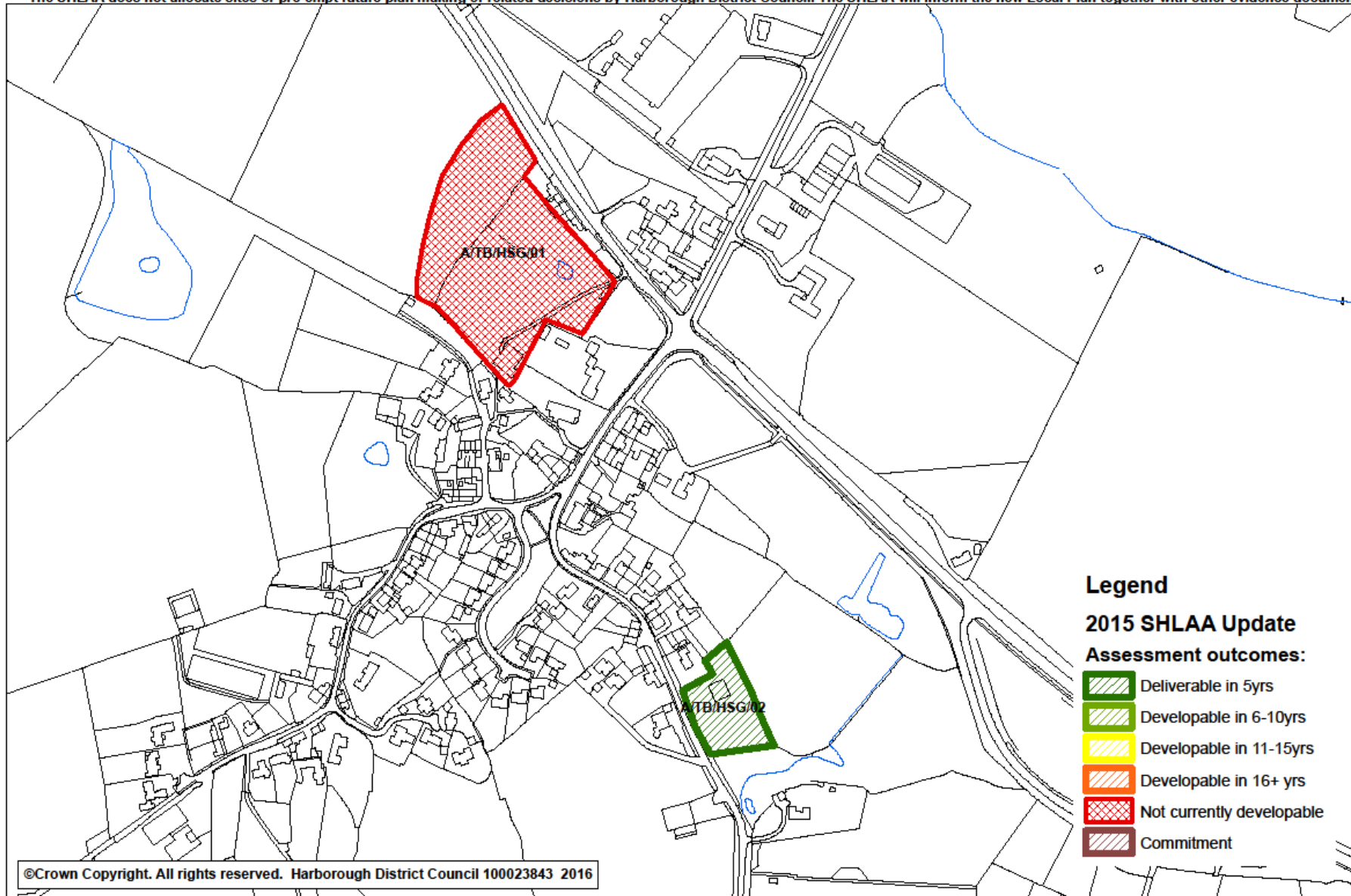
SHLAA 2015 Tilton on the Hill Outcomes

The SHLAA does not allocate sites or pre-empt future plan making or related decisions by Harborough District Council. The SHLAA will inform the new Local Plan together with other evidence documents.



SHLAA 2015 Tugby Outcomes

The SHLAA does not allocate sites or pre-empt future plan making or related decisions by Harborough District Council. The SHLAA will inform the new Local Plan together with other evidence documents.



SHLAA 2015 Ullesthorpe Outcomes

The SHLAA does not allocate sites or pre-empt future plan making or related decisions by Harborough District Council. The SHLAA will inform the new Local Plan together with other evidence documents.

