

Area of Separation Review

on behalf of

Harborough District Council

ISSUE

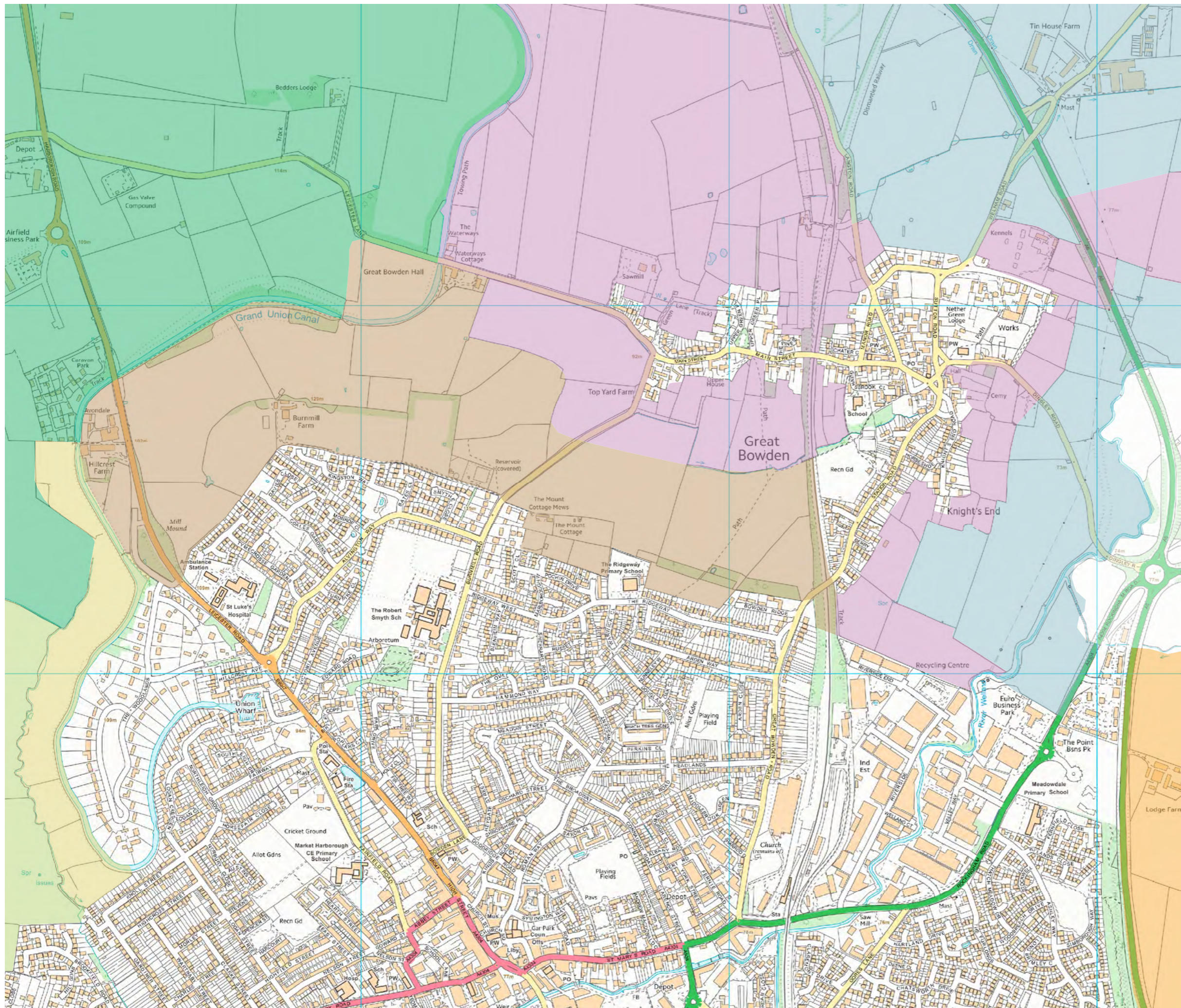
Appendix 4: Figures

March 2017

Contents

- 01 Market Harborough and Great Bowden – Local Landscape Character Areas
- 02 Market Harborough and Great Bowden – Study Area and Constraints
- 03 Market Harborough and Great Bowden – Topography
- 04 Market Harborough and Great Bowden – Analysis
- 05 Market Harborough and Great Bowden – 1901-1904 OS Plan
- 06 Market Harborough and Great Bowden – 1927-1931 OS Plan
- 07 Market Harborough and Great Bowden – 1958 OS Plan
- 08 Market Harborough and Great Bowden – 1985-1995 OS Plan
- 09 Market Harborough and Great Bowden - Land Units and Contribution to Separation

- 10 Lutterworth, Bitteswell and Magna Park – Local Landscape Character Areas
- 11 Lutterworth, Bitteswell and Magna Park – Study Area and Constraints
- 12 Lutterworth, Bitteswell and Magna Park – Topography
- 13 Lutterworth, Bitteswell and Magna Park – Analysis
- 14 Lutterworth, Bitteswell and Magna Park – 1888-1889 OS Plan
- 15 Lutterworth, Bitteswell and Magna Park – 1955 OS Plan
- 16 Lutterworth, Bitteswell and Magna Park – 1965-1968 OS Plan
- 17 Lutterworth, Bitteswell and Magna Park – 1985-1993 OS Plan
- 18 Lutterworth, Bitteswell and Magna Park – Land Units and Contribution to Separation



Key

Harborough Local Landscape Character Areas

- Foxton to Great Bowden Slopes
- Burnmill Farm Scarp Slopes
- Welland Valley North
- Lodge Farm Valley Slopes
- Mill Hill Undulating Claylands
- Airfield Farm Plateau
- Grand Union Canal Corridor

Note: Whole study area within Welland Valley Character Area

**B16063 - Area of Separation Review
Market Harborough and Great Bowden**

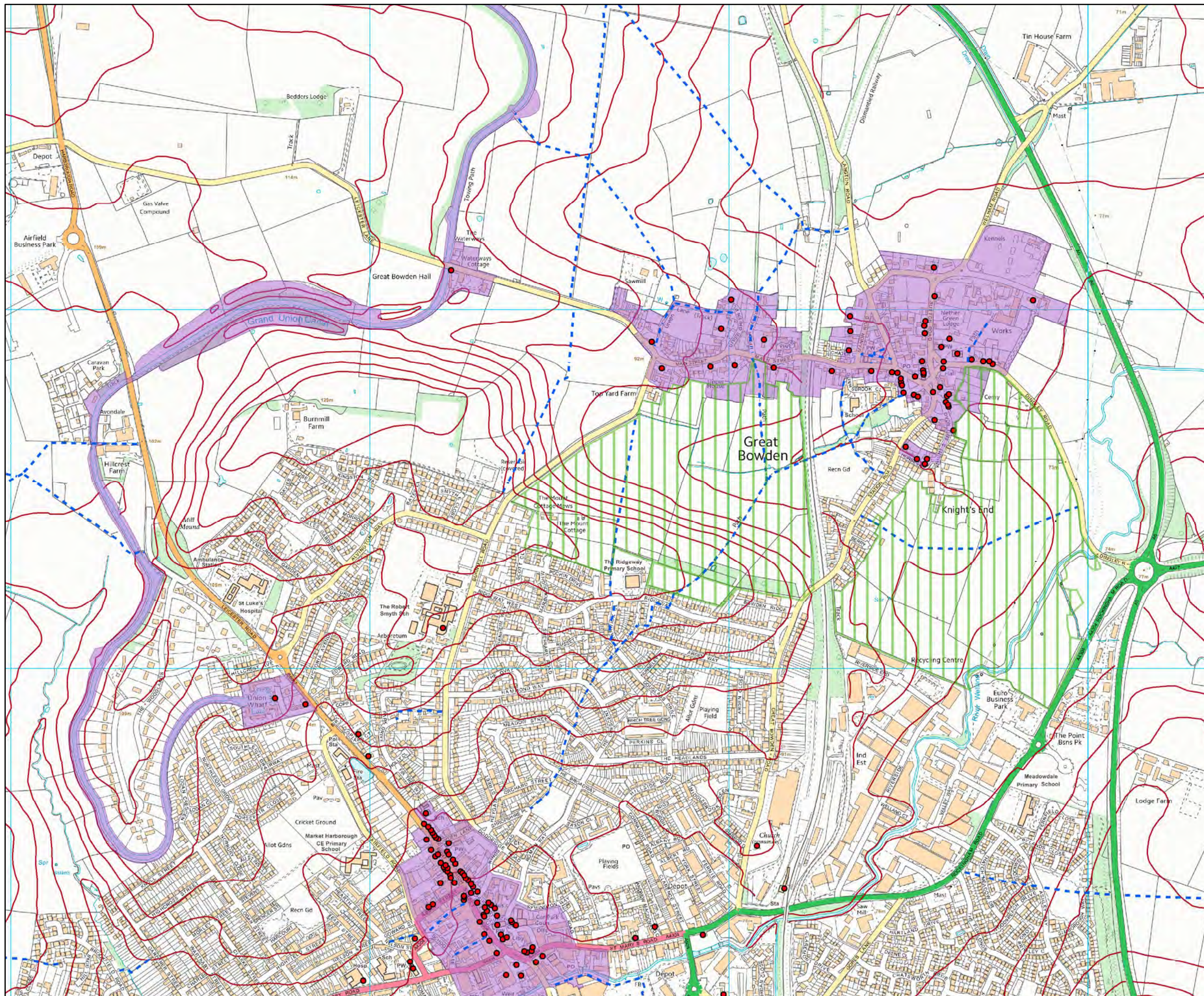
Local Landscape Character Areas

Figure 01

Scale: 1:10,000

February 2017





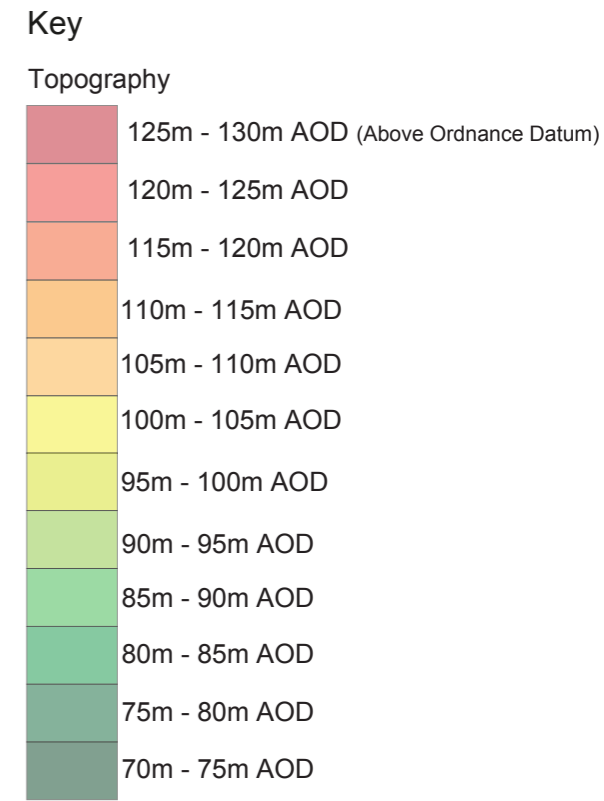
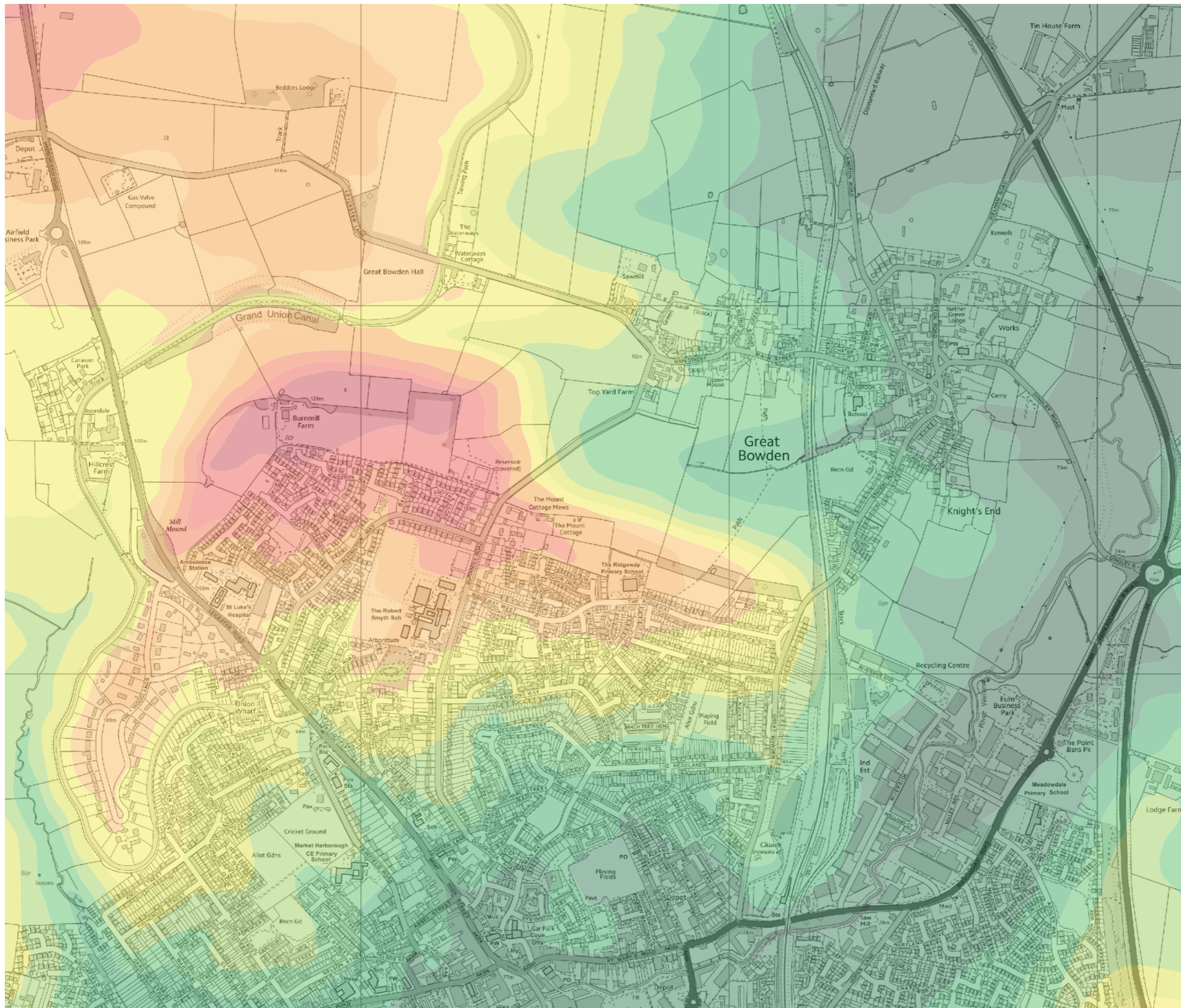
- Key**
- Area of Separation (Policy EV/3)
 - Conservation Areas
 - Listed Buildings
 - Public Rights of Way
 - 5m Contours

**Area of Separation Review
Market Harborough and Great Bowden**
Study Area and Constraints

Figure 02
Scale 1:15,000 @ A3
February 2017



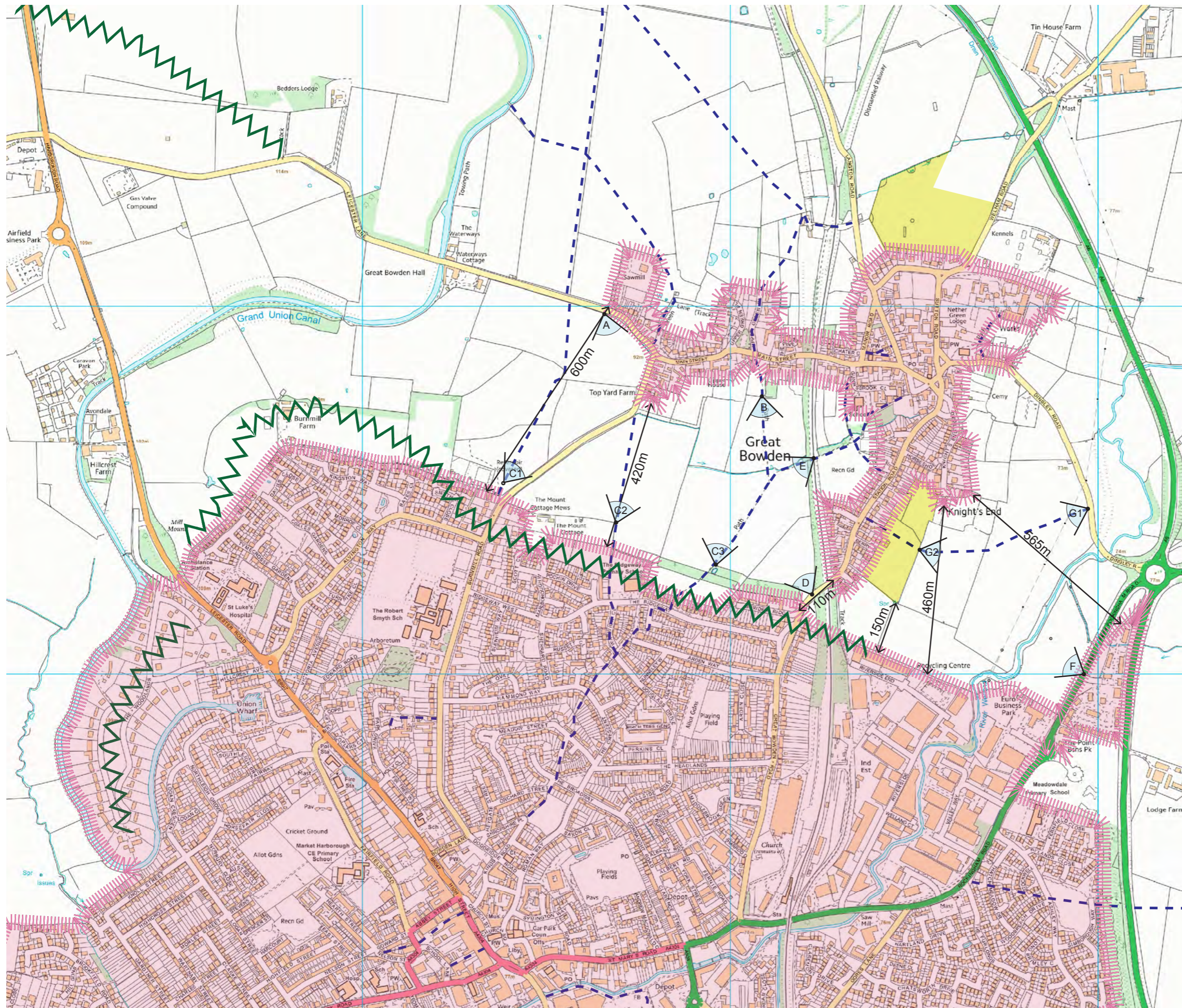
This map is reproduced from Ordnance Survey material with the permission of Ordnance Survey on behalf of the Controller of Her Majesty's Stationery Office © Crown Copyright. Unauthorised reproduction infringes Crown Copyright and may lead to prosecution or civil proceedings. Harborough District Council 100023843 2011



**B16063 - Area of Separation Study
Market Harborough and Great Bowden**

Topography
Figure 03
 Scale: 1:10,000
 February 2017





Key

- Urban areas
- Edge of Settlement/ Major developments
- Ridgeline
- Physical Gaps
- Area with Planning Consent
- Key Views
- Existing Vegetation
- Public Right of Way

Note: OS Base does not show all recent completions

**B16063 - Area of Separation Review
Market Harborough and Great Bowden**

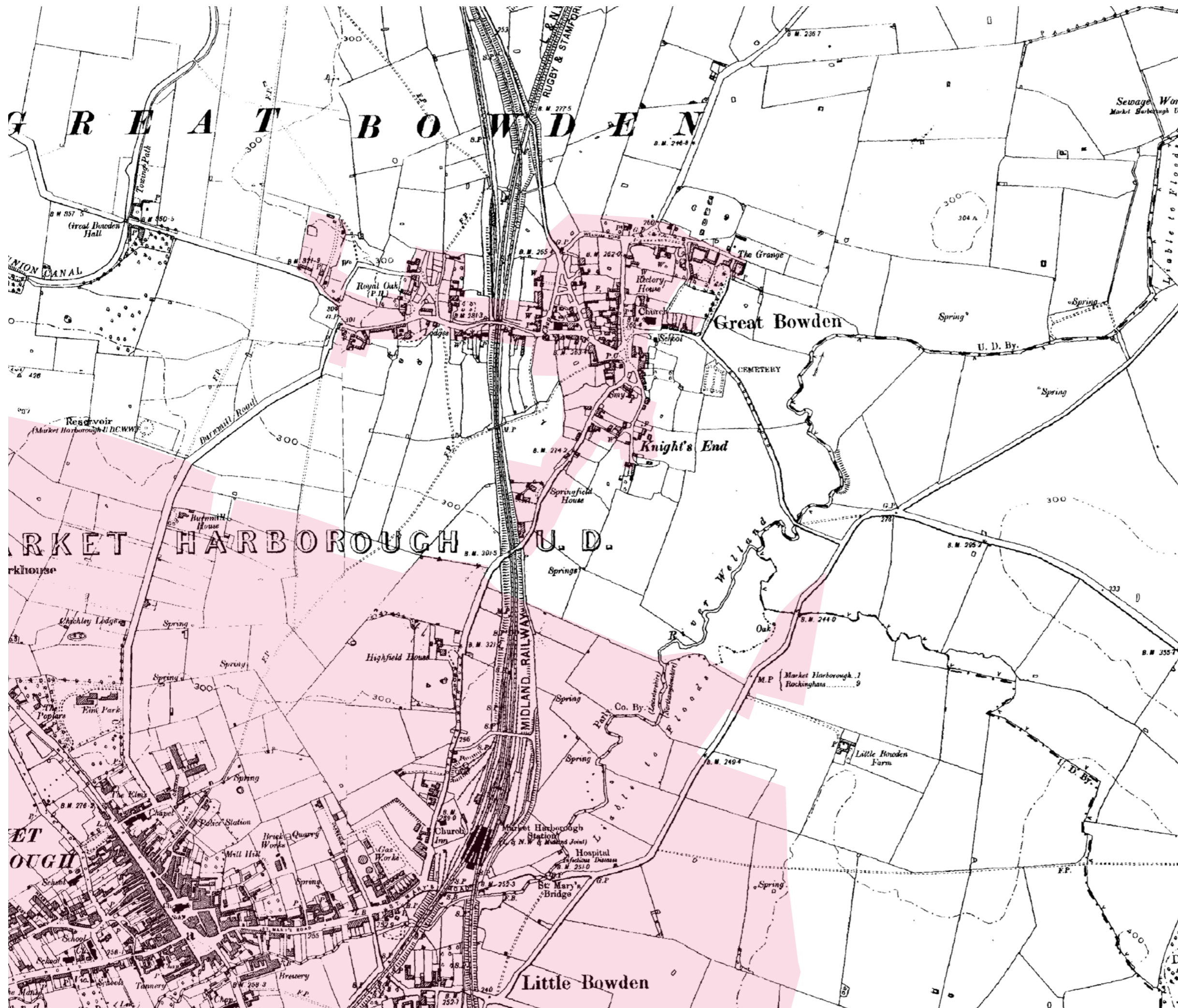
Analysis

Figure 04

Scale: 1:10,000

February 2017





Key

Urban extents 2016

B16063 - Area of Separation Review
Market Harborough and Great Bowden

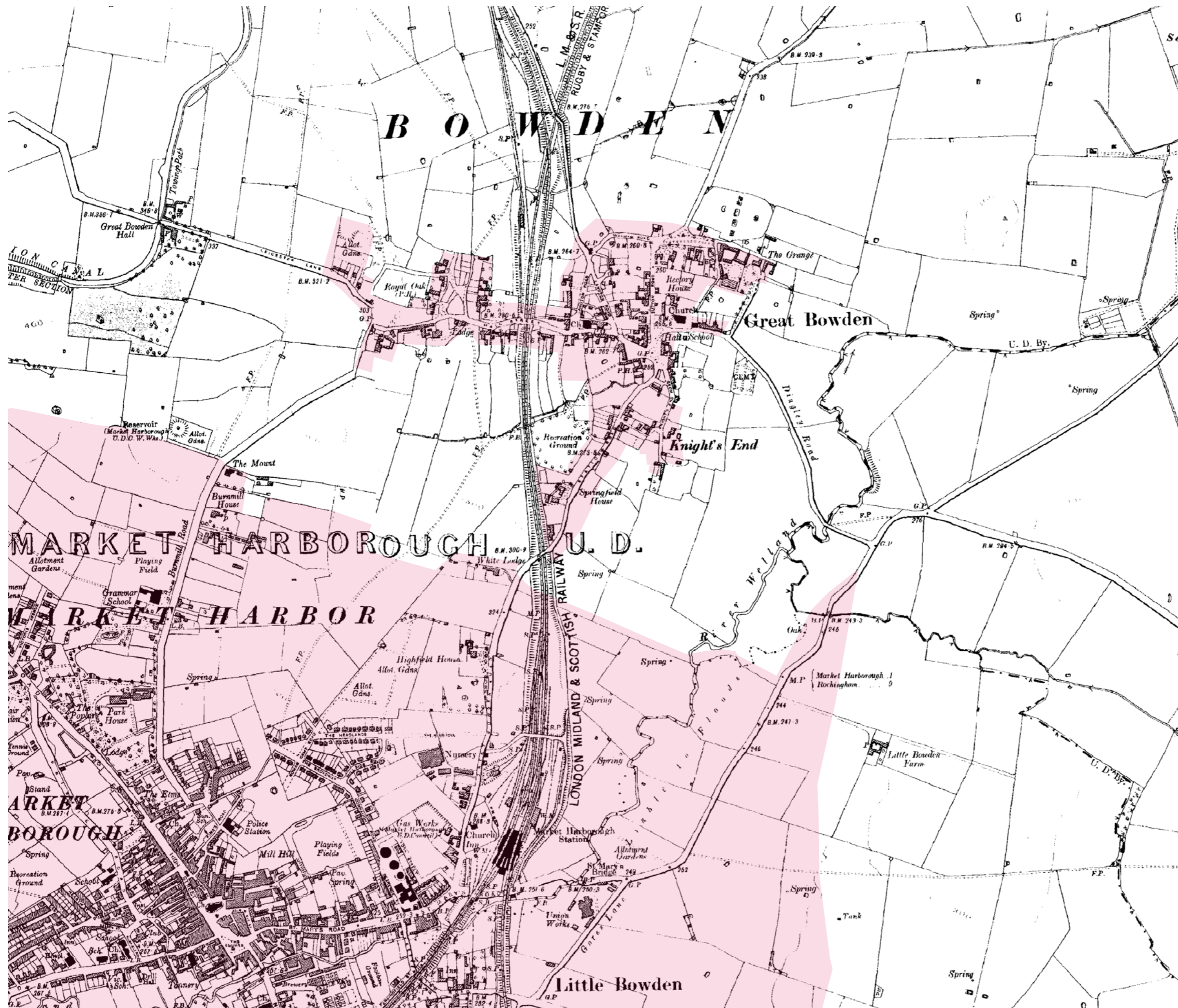
1901 - 1904 OS Plan

Figure 05

Scale: 1:10,000

February 2017





Key

Urban extents 2016

B16063 - Area of Separation Review
Market Harborough and Great Bowden

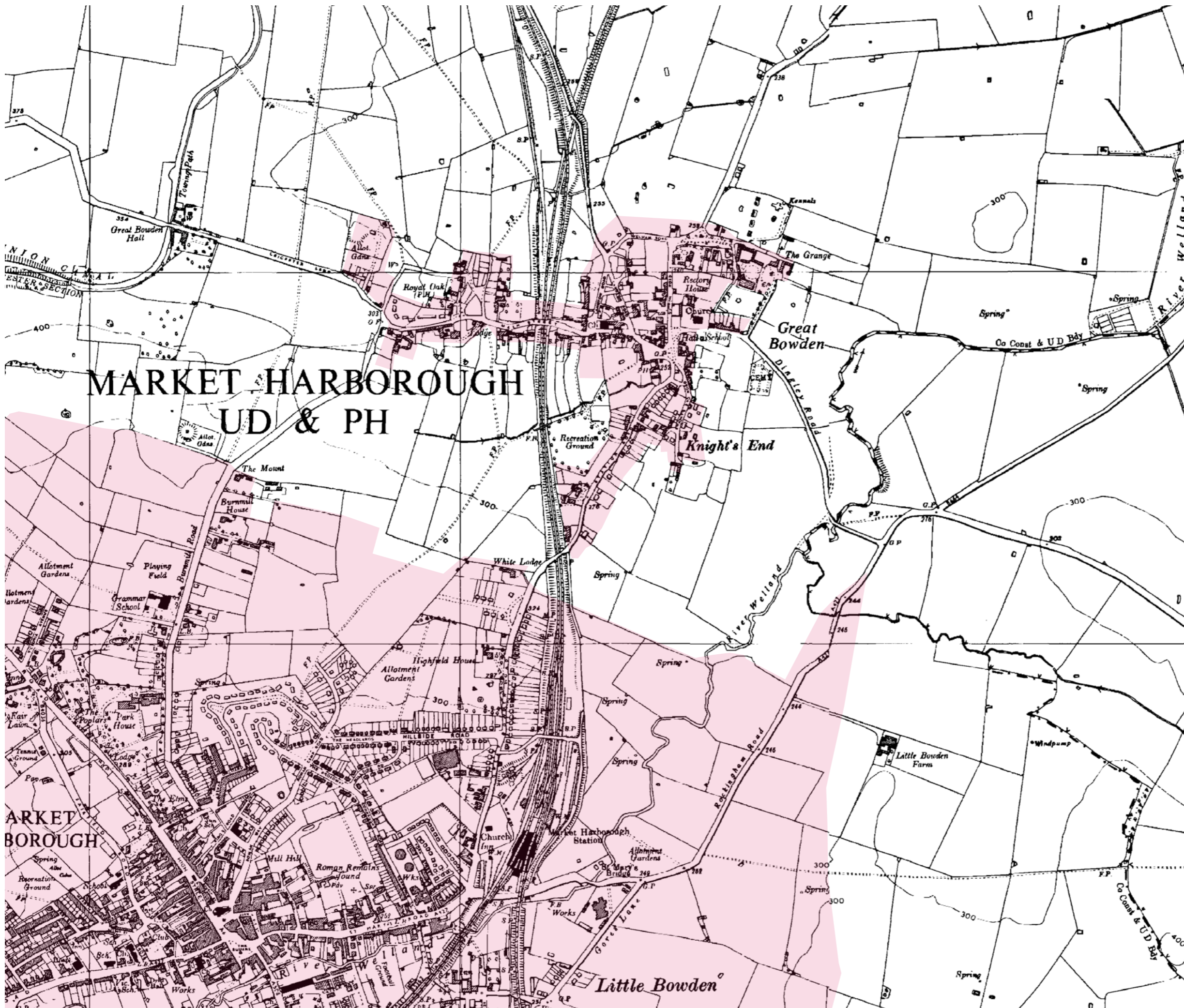
1927 - 1931 OS Plan

Figure 06

Scale: 1:10,000

February 2017





Key

Urban extents 2016

MARKET HARBOURGH UD & PH

B16063 - Area of Separation Review
Market Harborough and Great Bowden

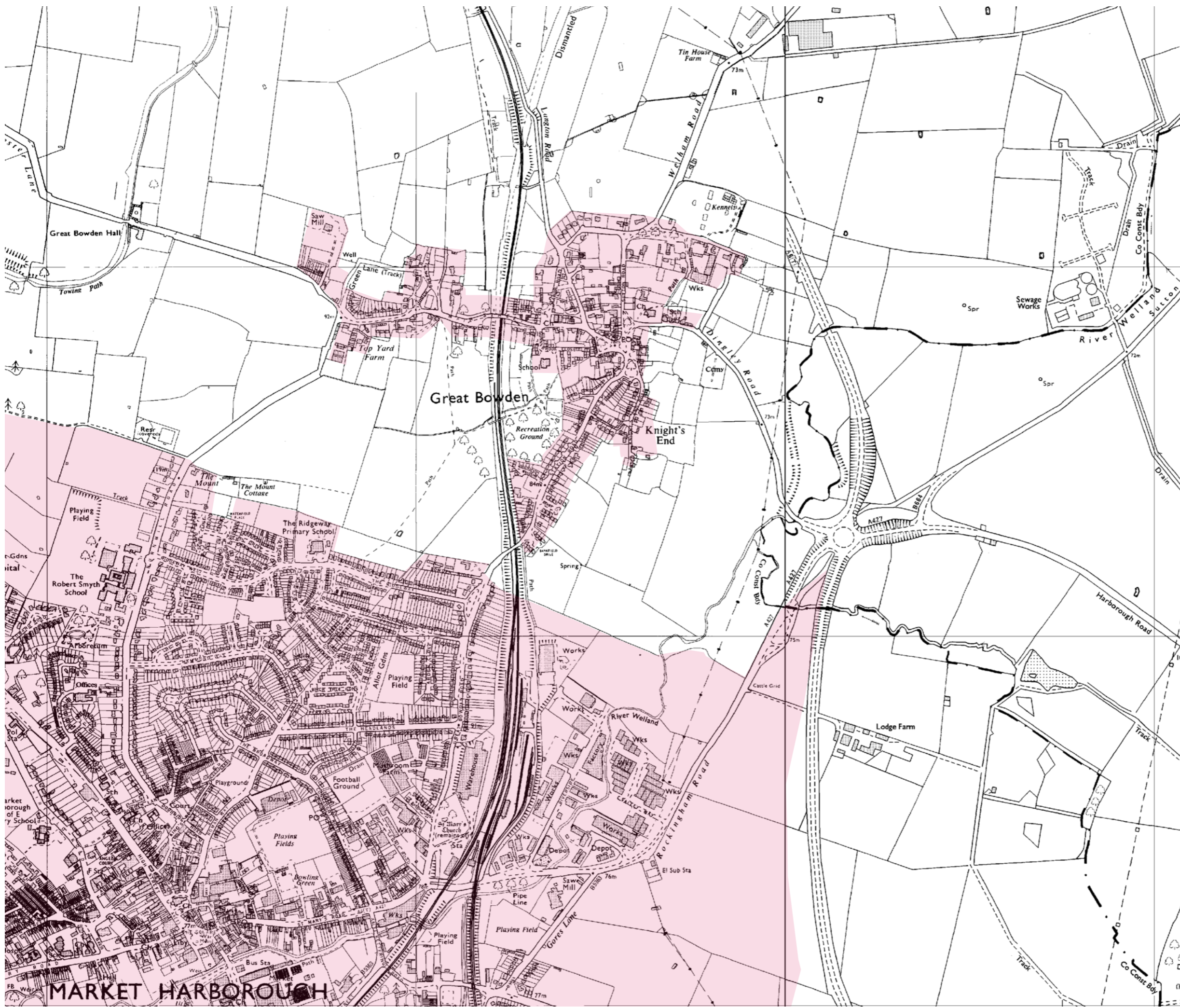
1958 OS Plan

Figure 07

Scale: 1:10,000

February 2017





Key
 Urban extents 2016

**B16063 - Area of Separation Review
 Market Harborough and Great Bowden**

1985 - 1995 OS Plan

Figure 08

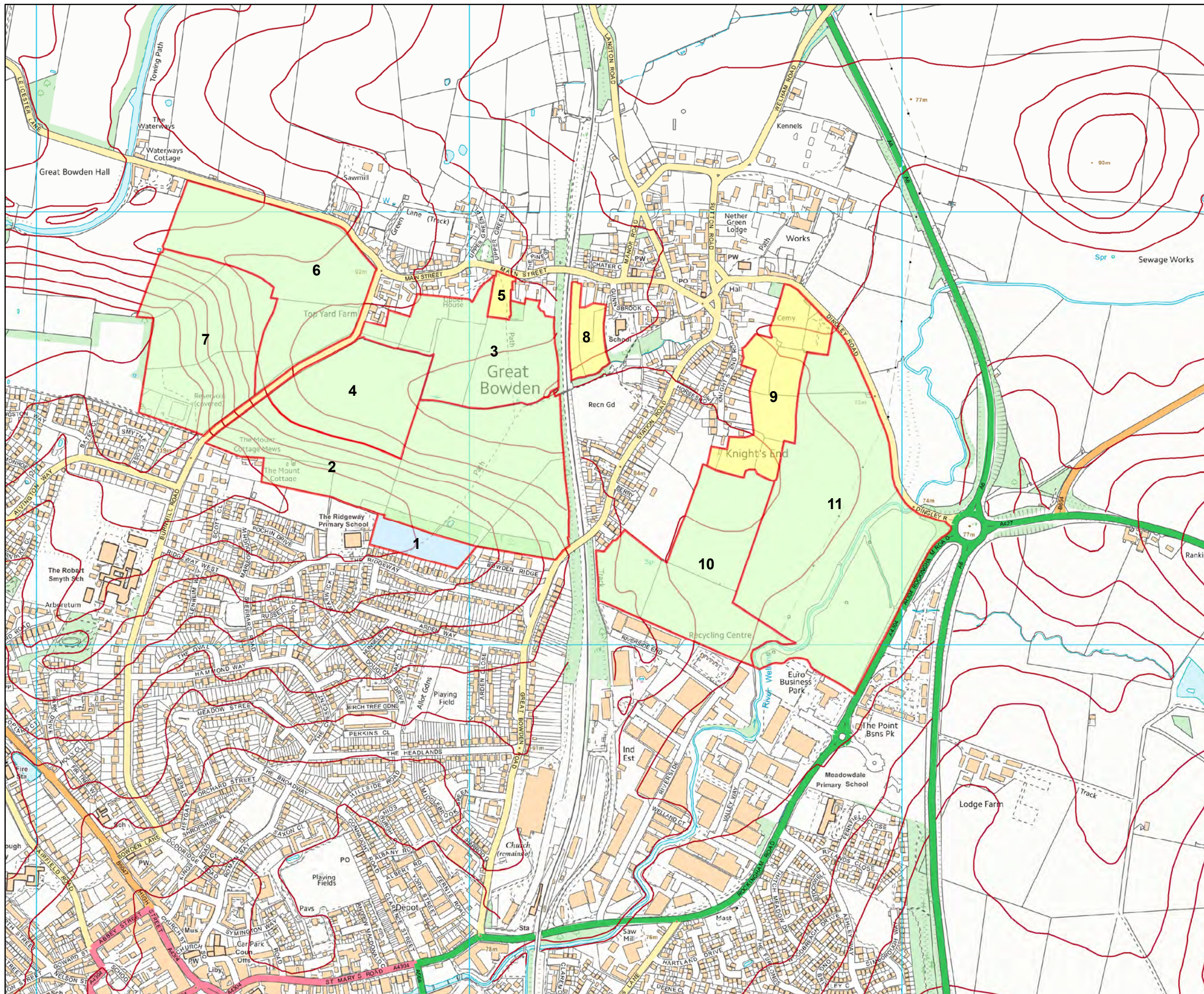
Scale: 1:10,000

February 2017



MARKET HARBOURGH





Key

- Primary Contribution
- Secondary Contribution
- Incidental Contribution
- 5m Contours

**Area of Separation Review
Market Harborough and Great Bowden**

Land Units & Contribution to Separation

Figure 09

Scale 1:10,000 @ A3
February 2017

