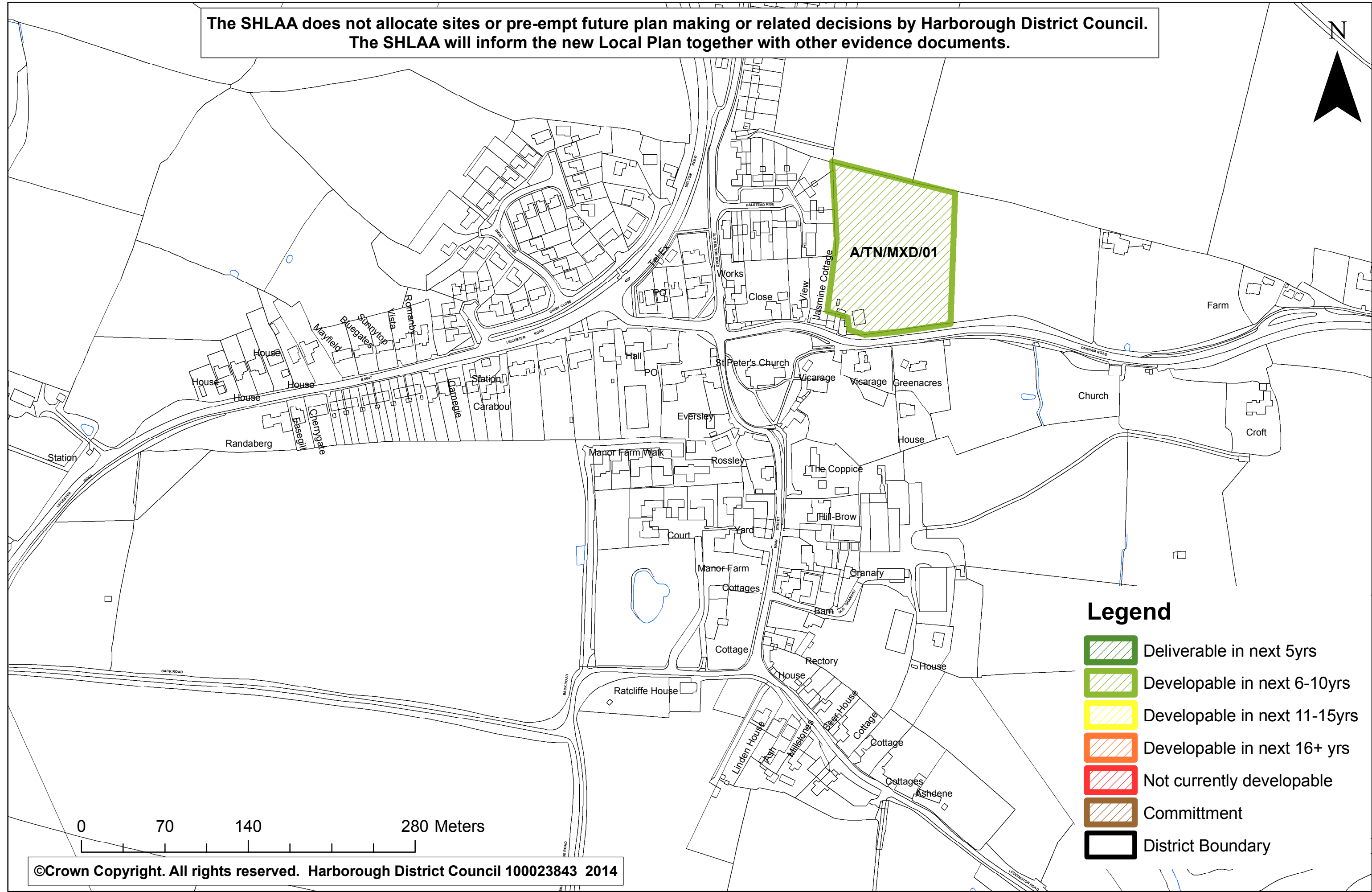









SHLAA 2014
Tilton Sites

The SHLAA does not allocate sites or pre-empt future plan making or related decisions by Harborough District Council.
The SHLAA will inform the new Local Plan together with other evidence documents.



Legend

-  Deliverable in next 5yrs
-  Developable in next 6-10yrs
-  Developable in next 11-15yrs
-  Developable in next 16+ yrs
-  Not currently developable
-  Commitment
-  District Boundary