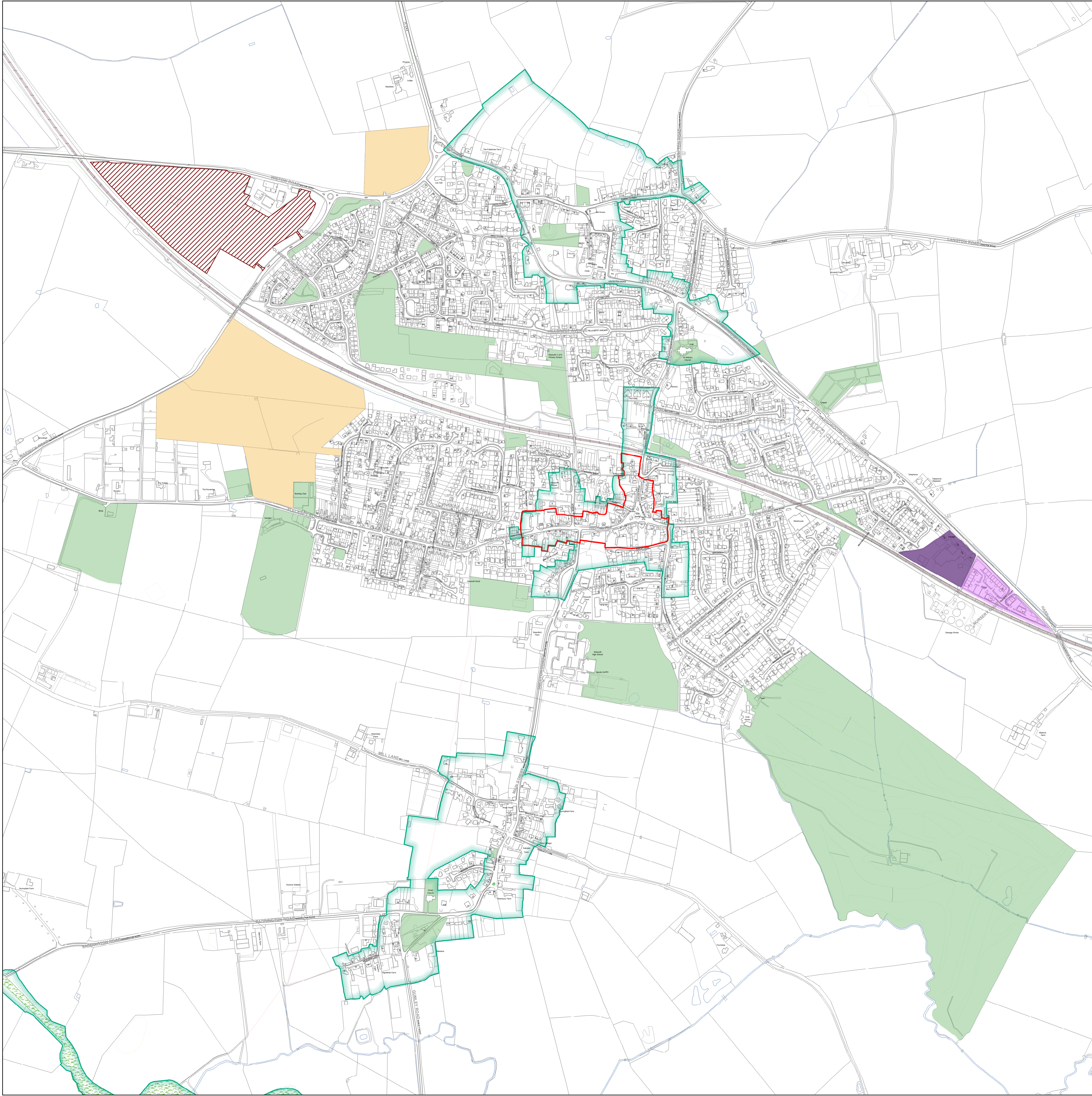


Inset Map: 62 (*The Kibworths and Smeeton Westerby*)



Legend

- Housing Allocations (H1)
- Housing Commitments (H1)
- East of Lutterworth Strategic Development Area (L1)
- Land Safeguarded for Northern Access to Spine Road (L1)
- Scraftoft North Strategic Development Area (SC1)
- Replacement Golf Course (SC1)
- New Gypsy, Traveller and Travelling Showpeople Sites (H6)
- Existing Gypsy, Traveller and Travelling Showpeople Sites (H6)
- Business Allocations (BE1)
- Business Commitments (BE1)
- Magna Park (BE2)
- Key Employment Areas (BE3)
- General Employment Areas (BE3)
- Bruntingthorpe Proving Ground Boundary (BE4)
- Bruntingthorpe Existing Industrial Estate (BE4)
- Leicester Airport (BE5)
- Complex North of Gartree Road (BE5)
- Retail and Town Centre Uses Allocations (RT1)
- Local / Town Centre Boundary (RT2)
- Market Harborough Primary Shopping Area (RT2)
- Tourism and Leisure Allocations (RT4)
- Conservation Areas (HC1)
- Open Space, Sport and Recreation Sites (GI2)
- Cemetery Allocations (GI3)
- Local Green Space (GI4)
- Sites of Special Scientific Interest (SSSI) (GI5)
- Local Wildlife Sites (GI5)
- Local Nature Reserve (GI5)
- Local Geological Sites (GI5)
- Areas of Separation (GD6)
- Green Wedges (GD7)
- Source Protection Zones (IN4)
- Harborough District Boundary

Notes:

Reference numbers in the key refer to Policies in the Local Plan.

Policies that apply across the District are included in the Local Plan, but not shown on the Policies Map.

Items listed within the legend are applicable across multiple inset maps and are not bespoke to each page.

1:5,000 @ A1

N

