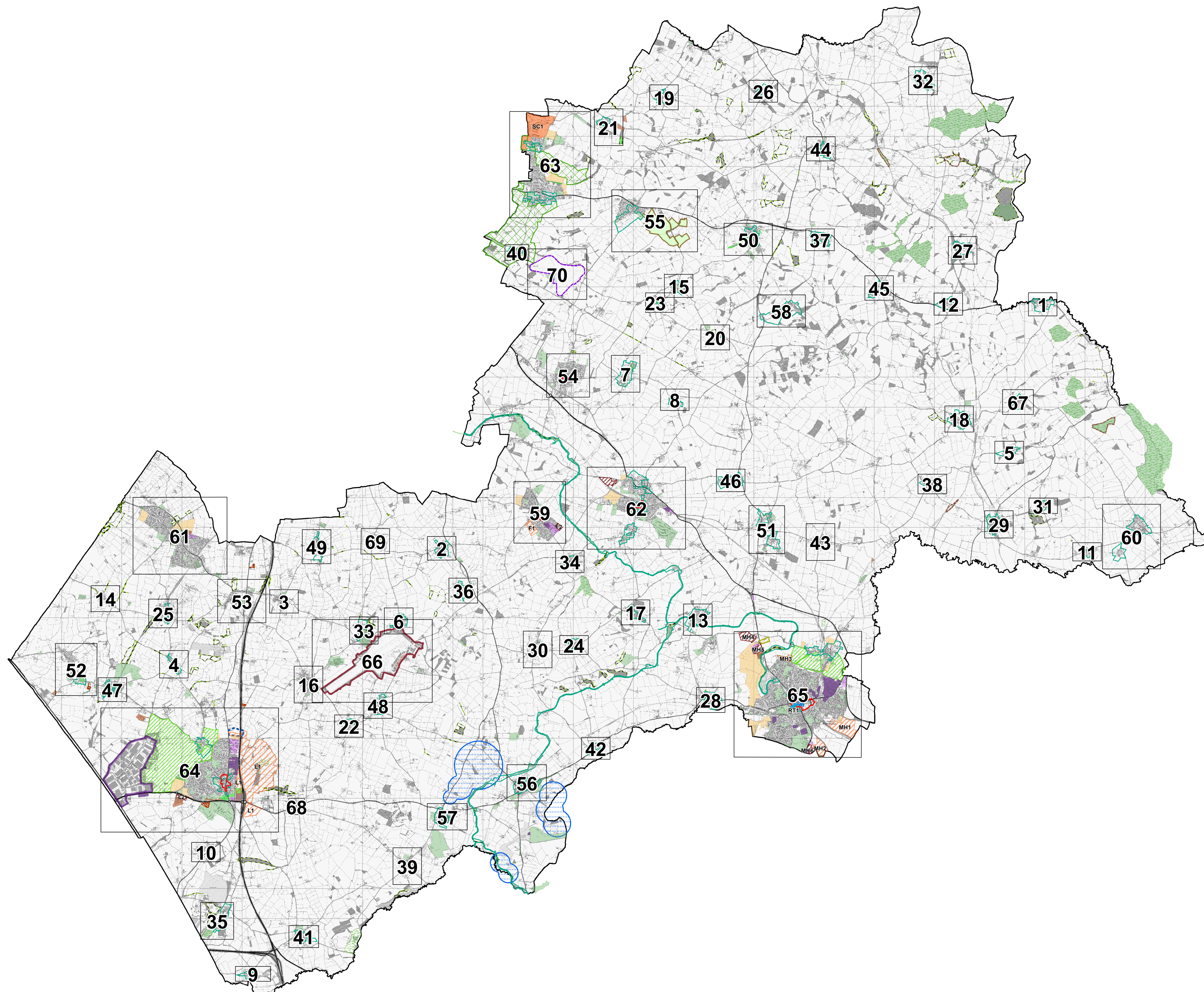




Overview Map

Legend

- Housing Allocations (H1)
- Housing Commitments (H1)
- East of Lutterworth Strategic Development Area (L1)
- Land Safeguarded for Northern Access to Spine Road (L1)
- Scraptoft North Strategic Development Area (SC1)
- Replacement Golfcourse (SC1)
- New Gypsy, Traveller and Travelling Showpeople Sites (H6)
- Existing Gypsy, Traveller and Travelling Showpeople Sites (H6)
- Business and Employment Allocations (BE1)
- Business and Employment Commitments (BE1)
- Magna Park (BE2)
- Key Employment Areas (BE3)
- General Employment Areas (BE3)
- Bruntingthorpe Proving Ground Boundary (BE4)
- Bruntingthorpe Existing Industrial Estate (BE4)
- Leicester Airport (BE5)
- Complex North of Gartree Road (BE5)
- Retail and Town Centre Uses Allocations (RT1)
- Local / Town Centre Boundary (RT2)
- Market Harborough Primary Shopping Area (RT2)
- Tourism and Leisure Allocations (RT4)
- Conservation Areas (HC1)
- Open Space, Sport and Recreation Sites (GI2)
- Cemetery Allocations (GI3)
- Local Green Space (GI4)
- Sites of Special Scientific Interest (SSSI) (GI5)
- Local Wildlife Sites (GI5)
- Local Nature Reserve (GI5)
- Local Geological Sites (GI5)
- Areas of Separation (GD6)
- Green Wedges (GD7)
- Source Protection Zones (IN4)
- Harborough District Boundary



1:50,000 @ A0

©Crown Copyright 2017. All rights reserved
Harborough District Council 100023843.

