

HARBOROUGH DISTRICT COUNCIL

Bowls, Tennis and Netball

Report

January 2018



Nortoft Partnerships Limited
2 Green Lodge Barn, Nobottle, Northampton NN7 4HD
Tel: 01604 586526 Fax: 01604 587719
Email: info@nortoft.co.uk Web: www.nortoft.co.uk

TABLE OF CONTENTS

SECTION 1:	OUTDOOR BOWLS	2
SECTION 2:	OUTDOOR TENNIS	11
SECTION 3:	NETBALL	22
SECTION 4:	SUMMARY BY SITE	25

TABLE OF FIGURES

FIGURE 1:	BOWLING GREEN SITES	3
FIGURE 2:	OUTDOOR BOWLING GREENS	6
FIGURE 3:	OUTDOOR TENNIS COURTS WITH COMMUNITY USE	12
FIGURE 4:	DEDICATED TENNIS COURTS, QUALITY, INVESTMENT NEEDS	14
FIGURE 5:	SITE BY SITE SUMMARY	28

SECTION 1: OUTDOOR BOWLS

- 1.1 Sport England estimates that nationally about 271,000 adults take part in bowls at least once a month, but there is no specific split between different types of bowling, so this figure covers crown green outdoors and indoors, flat green outdoor and indoors, short mat and carpet (Sport England, 2017). The sport draws the largest proportion of its players from the higher socio-economic groups.
- 1.2 In terms of the trends in bowls at the more local level, the Active People Survey sample size is too small even at the County Sports Partnership level to provide any real guidance.
- 1.3 Nationally, according to the Sport England Active People Survey (Sport England , 2016), over 77% of players are aged 65 years and over and 19% are aged 55-64 years. Only 4% of players are aged under 55 years. The Market Segmentation analysis, also from Sport England (Sport England, 2017), suggests that bowls is participated in by only two of the market segments in the district, and they are of retirement age or close to it. This reflects the characteristics of the sport, which primarily attracts older people although the sport continually attempts to attract younger players.
- 1.4 Of the clubs responding to the club survey, only Little Bowden has seen an increase in membership over the last 5 years and is the only one which expects to continue to grow.

Current provision and assessment

- 1.5 There are 7 affiliated bowls clubs and 4 unaffiliated, all on separate sites. All of the sites have one green other than Welland Park which has two, but not all sites have 6 rinks. The sites, with a summary of the site audit, membership numbers where known, and club feedback are listed below in Figure 1, and the sites are mapped in Figure 2.

Figure 1: Bowling green sites

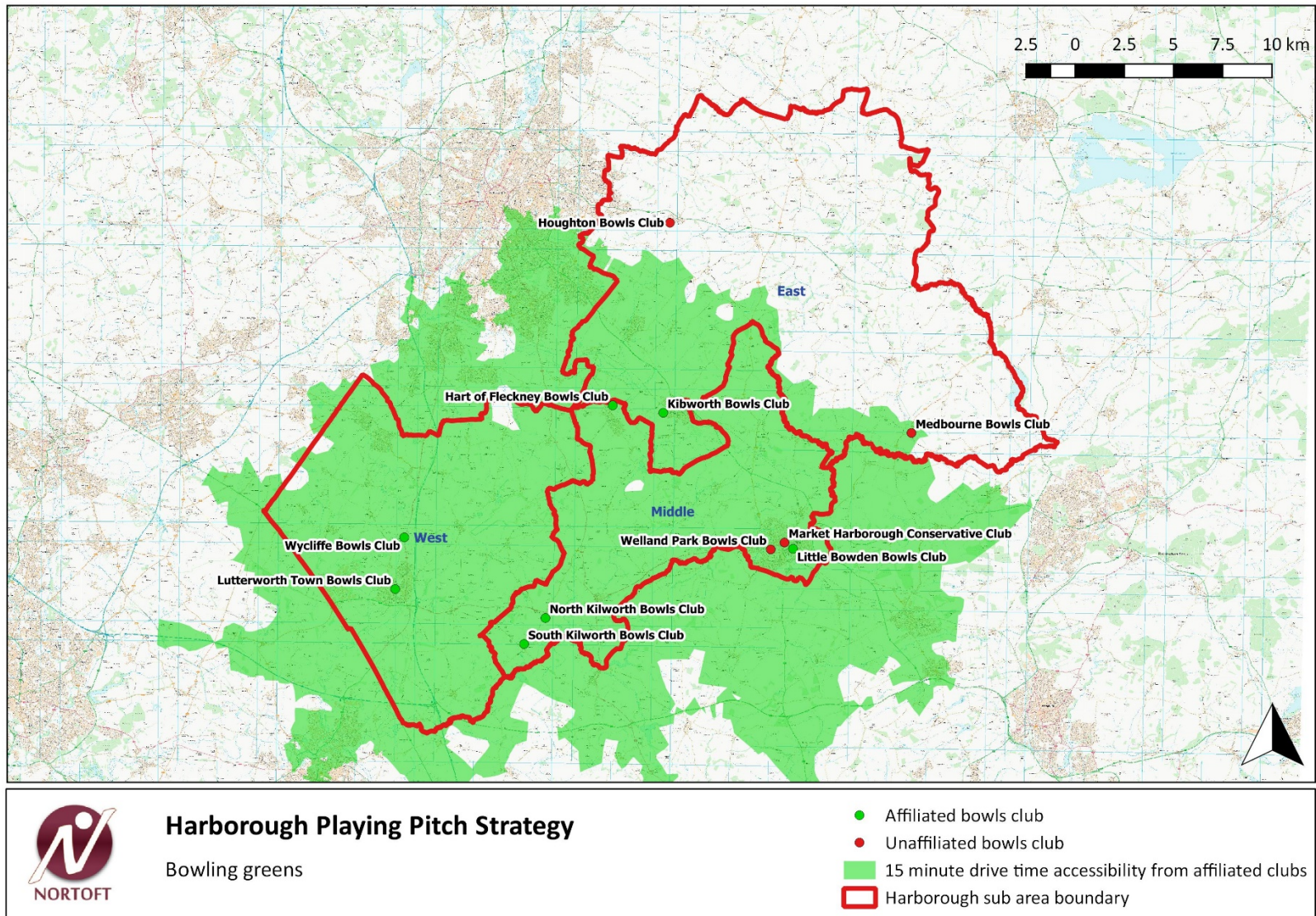
Affiliated club/site	Number of members	Number of rinks and used capacity	Comments from club and key audit findings
Affiliated clubs			
Hart of Fleckney Fleckney Recreation Ground, Leicester Road		6	Part of Fleckney Sports Centre, adjacent to football pitches and small size AGP. Good quality green and ancillary facilities.
Kibworth Fleckney Road, Kibworth		6	Site directly opposite Kibworth Cricket Club. Good quality green and ancillary facilities.
Little Bowden Kettering Road, Market Harborough	70 seniors, 4 minis	6 (70%)	Membership has increased over the last 5 years and is expected to continue to do so. Most members from Harborough, but about 5% from Kettering. Clubmark club with development plan. Main issue relates to the recruitment of members. Travel time to club up to 20 minutes. Good quality green and ancillary facilities.
Lutterworth Town, Recreation Ground, Coventry Road, Lutterworth	48 seniors	6 (48%)	Club members travel up to 5 minutes to club. All live in Harborough. Site in Recreation Ground adjacent to Leisure Centre. Good quality green and ancillary facilities.
North Kilworth Back Street, North Kilworth		6	Good quality green and ancillary facilities but changing facilities very small.
South Kilworth North Road, South Kilworth	29 seniors	6 (29%)	Club has stayed same size for last few years and does not have a waiting list. It draws from a wide area, including Daventry district, Oadby & Wigston, and Rugby borough. Travel time to club up to 20 minutes.

			<p>Main issue relates to the recruitment of members.</p> <p>Average to good playing surface. Average quality ancillary facilities.</p>
Wycliffe Hall Lane, Bitteswell		6	<p>Shares site with Lutterworth Football Centre. Good quality green and ancillary facilities.</p>
Unaffiliated clubs			
Welland Park Bowls Club, Market Harborough	38	6+6 (19% + casual play)	<p>Two greens, good quality greens and ancillary facilities. Greens open to public as well as being used by club.</p> <p>Almost all of the club's members come from Harborough. The size of the club has remained the same over the last 5 years and does not anticipate growing. Their biggest problem is the recruitment of new members.</p> <p>The site is owned by Harborough District Council and the club works on an annual licence.</p> <p>Excellent quality greens but poor quality changing provision with no showers. Car parking is limited and too restricted on time allowance. Tennis club shares the pavilion.</p>
Market Harborough Conservative Club	48	6 (80%)	<p>All members from within approx 10 minutes drive, and all live in Harborough. Club has stayed same size over last 5 years but anticipates growing in future. The club does not have a waiting list.</p> <p>The greens design means that it can only be played one way and this causes wear on the ends so the membership is limited by the club to approx 60. The quality of the green is good but some works needed to improve playing surface. Equipment is good but could be improved. Needs improved equipment storage.</p>
Medbourne Bowls Club		4	<p>Good quality green. Small shed for clubhouse. Adjacent to restaurant.</p>
Houghton Bowls Club	35	4 (35%)	<p>Members are very local, travelling up to about 5 minutes to the club. All live within Harborough.</p>

			<p>Club has stayed the same size over the last 5 years and does not expect to grow further. The club does not have a waiting list. The main issues limiting growth are a lack of volunteers and the recruitment of members.</p> <p>Green is well maintained but old (30 years) so needs full refurbishment and extension. Club has development plan for this.</p> <p>Club uses village hall as clubhouse. No changing available but is not required. Green available to both members and to visitors.</p>
--	--	--	---

- 1.6 All of the club sites are owned and managed by the clubs, with the exception of Welland Park, which is owned and managed by Harborough District Council.
- 1.7 Using the advice from Bowls England that the maximum site capacity is around 100 members for 6 rinks, or 17 members per rink (para 1.13) it is clear that most of the clubs are operating at between a third and half of their potential capacity. Little Bowden is operating at higher levels, of around 70%. Furthermore, the restrictions on the green at the Conservative Club reduces its capacity, and with a current membership of 48, is effectively operating at 80% full. The only site within Market Harborough with significant spare capacity is Welland Park, but it seems unlikely that there are high levels of casual play which mean that both greens are required at present.
- 1.8 There is no minimum size of membership for a bowls club as a greater determining factor is the level of volunteers available to help with the club and to undertake the site maintenance. However where a club has less than about 30 members, its long term sustainability can be in question, and some of the club returns from Harborough are already identifying a lack of volunteers and issues with recruiting new members.
- 1.9 The distribution of the bowling greens means that the majority of people with access to a car can reach an affiliated site within about 15 minutes' drive. The exception being in the east sub area where access is provided by unaffiliated sites and sites over the border of the authority.

Figure 2: Outdoor bowling greens



National Governing Body comments and strategies

1.10 The main national governing body for flat green bowls is Bowls England, which was formed by the unification of the English Bowling Association and the English Women's Bowling Association. The Bowls England Strategic Plan 2014-17 sets out its structure and the organisational links with the Bowls Development Alliance (BDA), which is the body recognised by Sport England for the development of the sport, particularly at the grass roots level. The objectives of the strategic plan are the promotion of the sport, the recruitment of members, and their retention.

1.11 The Bowls Development Alliance (BDA) Vision is, "Working with flat green clubs to help them and the bowlers within them to develop more resilient habits to ensure a stronger sport, the benefits of which can be enjoyed for a life time". Their strategy is Play Bowls, and for 2017-2021 the Play Bowls focus will be to support:

...Sport England's vision to produce a more productive, sustainable, resilient and responsible sport sector. This plan puts bowls customers at the heart of its delivery with the aim to make bowls clubs more welcoming and inclusive, particularly for those who are older and those who are currently under-represented in the sport but also help to reinforce a physical activity habit well into later life.

The strategy has aimed to align itself to the priorities laid down by Sport England in the new strategy "Towards an Active Nation" looking to develop more resilient habits, encourage those older people who are presently inactive to become active and develop a more diverse volunteer workforce.

The strategy will also provide opportunities for both physical and mental well-being and to encourage more bowls clubs to be the heart of the local community through the provision of more diverse services.

The next four years will see the following actions:

- *Intensive support to 200 identified clubs to help strengthen resilience in the core market through the new Club Development Programme*
- *Support clubs to encourage those who are presently inactive to engage with bowls through the Play Bowls Package*
- *Upskilling of volunteers so as to impact directly on sustaining membership and to continue to grow participation particularly providing more opportunities for those with a disability*
- *Assist bowls clubs to become an integral part of the local community*
- *Ensure clubs have the support and guidance they need to keep their facilities at a standard that will maintain the habit of physical activity of their members*

1.12 Bowls Leicestershire is the county association, and 7 of the 11 clubs are affiliated to it.

1.13 Bowls England has confirmed that a maximum reasonable capacity of a 6 rink green for most clubs is around 100 members, i.e. around 17 members per rink. However

the “capacity” of the most competitive clubs would be potentially lower than this figure, and the membership capacity of the most “social” clubs might be higher. Bowls England also confirms that a 15 minute drive time is realistic for this sport.

Assessment of Future Needs

Quantity

- 1.14 The extent to which the existing bowls sites are used is a key factor when determining the need for future provision. Based on the membership information provided by the clubs, it is clear that most of the clubs are currently operating at levels well under their potential capacity, mostly about half or less. Only Little Bowden and The Conservative Club (with its capacity restrictions) are operating at a higher level, of around 70% and 80% respectively.
- 1.15 Harborough is expected to experience more older people in the period up to 2031, and for those aged 60-85 years which have the highest attraction for bowls, the increase is expected to be around 45% for the Middle sub area, and 41% for both the West sub area and East. If the rate of participation in outdoor bowls per 1,000 population remains constant over the strategy period, then there would also be expected to be an increase in demand of around 40-45%.
- 1.16 With a current membership of the clubs in Market Harborough being 156, the membership could be expected to grow to 226 by the end of the strategy period. Theoretically the spare capacity at Little Bowden and The Conservative Club together is approximately 42 members, so there will be a need to provide for an additional 28 members at Welland Park. With the high levels of spare capacity at Welland Park, this additional demand can be easily met on just one of the club’s greens, unless there are also very high levels of pay and play use.
- 1.17 In both the West and East sub areas there are high levels of spare capacity, which can easily meet the new demand expected to be generated in the period up to 2031.

Accessibility

- 1.18 A 15 minute drive time catchment is appropriate for outdoor bowling. A walking catchment is not appropriate for bowls as a high proportion of players travel by car.

Design and quality

- 1.19 The quality and design of facilities should reflect current best practice, including design guidance from Sport England and the National Governing Body. This should apply to refurbishment proposals as well as new build.

Meeting the needs of the future

- 1.20 The strategy objective should be to retain a high quality network of outdoor bowls facilities across Harborough which has both the capacity to cater for demand and allows everyone to access a site within 15 minutes drive time.
- 1.21 There are no known threats to the existing network, but a number of the clubs have relatively low memberships and have identified issues with the recruitment of members and the volunteers needed to maintain the club sites.
- 1.22 The double green at Welland Park has the potential capacity of up to around 200 members, with some pay and play. The current club has only around 38 members, so is relatively small. The anticipated increase in demand for bowls up to 2031 in the Market Harborough area is unlikely to take up the spare capacity that currently exists, and the need for a double green at Welland Park does not appear to be justified based on the current or future demand. Consideration should therefore be given to reducing this site to a single green and using the second green for other purposes which are appropriate in the park.
- 1.23 It is not appropriate to identify sites “surplus” to demand elsewhere in the authority, but it would be possible to lose one site in each of the West and East sub areas without limiting the long term ability to meet the potential demand. The key factors in such considerations are: are there other sites whose catchment’s overlap with the site proposed to be closed, so retaining the 15 minute accessibility standard; whether these alternative sites are high quality and of 6 rink size; whether the adjacent clubs have capacity to absorb the displaced use.
- 1.24 There may be a future need for developers’ contributions off site to improve the greens, clubhouse and ancillary facilities to clubs within the approximately 15 minute travel time.

Justifying developers’ contributions

- 1.25 It is proposed to seek developers’ contributions towards the improved pavilion at Welland Park as off site contributions from developments in Market Harborough. Other developments may be required to contribute off site to outdoor bowls clubs within the accessible travel time where there is a justified need.

Recommendations for outdoor bowls

Council's role in outdoor bowls provision

1.26 To support the Council's policies on health and well-being, as well as supporting sports participation, performance and excellence, the Council will:

- continue to support outdoor bowls clubs across the district to provide a network of good quality sites within 15 minutes drive time all residents.
- continue to provide pay and play bowls in Harborough on one of the existing greens in Welland Park.

Sites

Protect

1.27 It is proposed to generally protect and maintain the network of outdoor bowls sites with the objective of achieving a good quality site within 15 minutes drive time of all residents.

Enhance

- Improve the changing pavilion / clubhouse at Welland Park which is shared by the bowls and tennis.
- Seek to improve the car parking available at Welland Park.
- Support works at the Conservative Club to extend the green, improve playing surface and improved equipment storage.
- Improve the green at Medbourne Bowls Club.

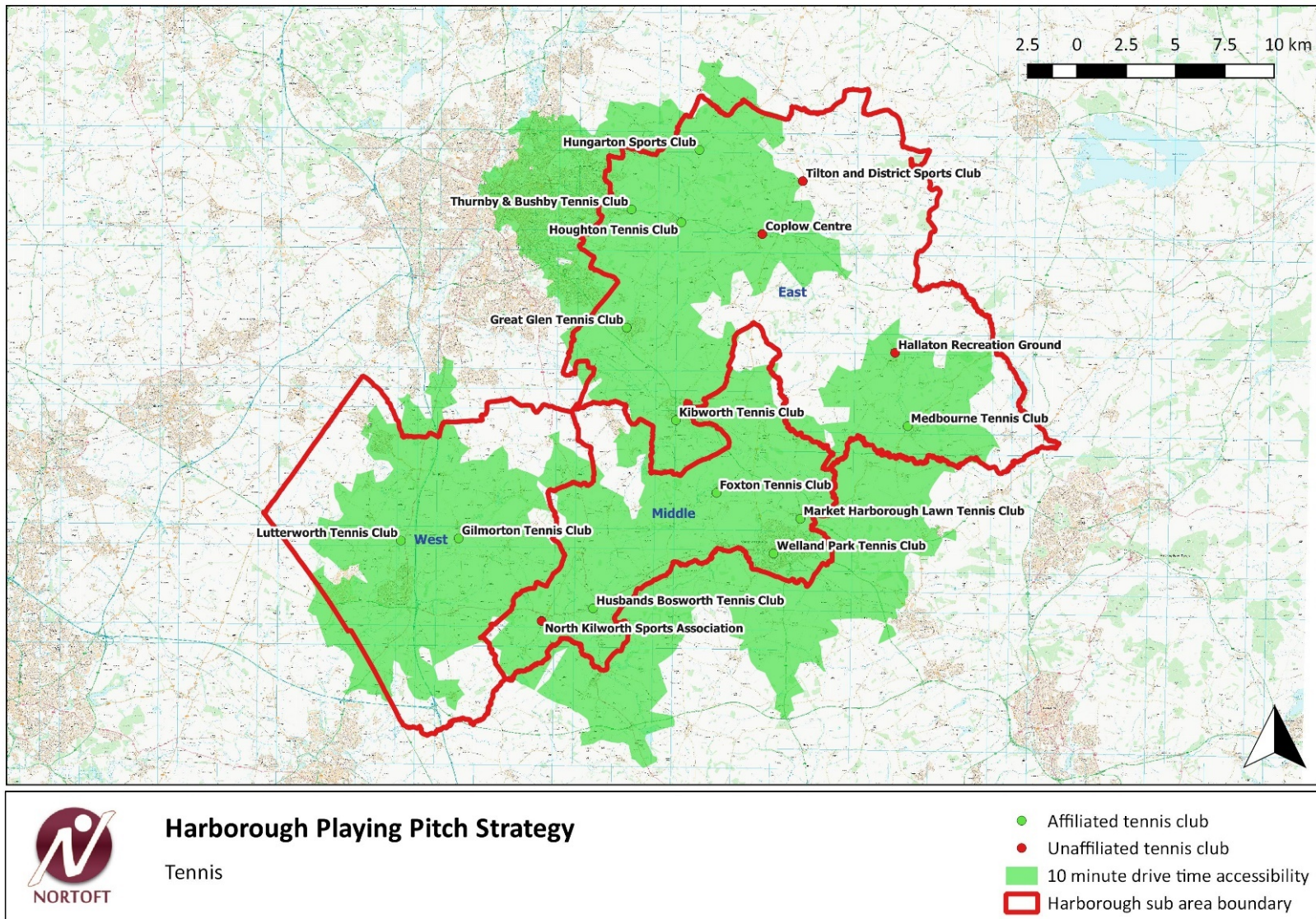
SECTION 2: OUTDOOR TENNIS

- 2.1 This report focusses on outdoor tennis provision across the district. There are also 3 indoor tennis courts at Harborough Leisure Centre, but these are addressed in a separate concurrent strategy being produced for the District Council.
- 2.2 Outdoor tennis courts in Harborough are an important facility type, and there are 17 sites with tennis courts available for community use, plus a number of multi-sport/multi use games areas courts on education sites.
- 2.3 Sport England's Active People Survey (Sport England , 2016) suggests that nationally around 746,900 adults over 16 years play tennis at least once a month, but tennis participation has decreased slightly during the period 2007/08 to 2015/16. The sport attracts more men (60%) than women (40%), and the higher socio-economic groups. Of the 10 largest market segment groups across the district, one currently plays tennis (Empty Nest Career Ladies) but potentially 6 others could be attracted to tennis: the Comfortable Retired Couples; Stay at Home Mums; Fitness Class Friends; Competitive Male Urbanites; Retirement Home Singles; and Career Focussed Females.
- 2.4 Of the 17 sites, 13 have clubs of which 3 also allow public access. There is one site which is available for hire, and 2 open access sites.
- 2.5 This section of the study primarily looks at dedicated tennis courts, following the approach taken by Sport England. This is because courts on school sites and elsewhere tend only to be available for community use during the summer months, with the courts being converted to netball and other sports for much of the rest of the year. Open access Multi Use Games Areas and facilities which are similar but do not necessarily meet the strict MUGA design guidelines of Sport England, are now incorporated standards for play and teenage provision, usually part of an open spaces strategy.

Current provision and assessment

- 2.6 The map in Figure 3 shows that the distribution of the affiliated tennis clubs means that most people with access to a car can reach an affiliated tennis club site within about 10 minutes drive, with the gaps in accessibility around the unaffiliated sites. The majority of the dedicated tennis courts in Harborough host affiliated tennis clubs.

Figure 3: Outdoor tennis courts with community use



Contains Ordnance Survey data © Crown copyright and database right. 2017

- 2.7 Generally the outdoor tennis sites are reasonable or good quality, but not all have changing facilities, and of those that have, not all are good quality. Club sites generally require better courts and ancillary facilities than those sites aimed at casual play, and most clubs also need at least some flood-lit court space to enable the sport to be played year round.
- 2.8 The table in Figure 4 provides the findings from the audit and a summary of the club feedback, together with the overview of the investment needs.

Figure 4: Dedicated tennis courts, quality, investment needs

Key: LTA affiliated club

Middle sub area

Sub Area	Site	Club name	Total number of courts	Number of floodlit courts	Surface type	Access			Summary score for courts	Summary score for changing pavilion	Summary score for signage	LTA membership	Site capacity @ 40 members / non-floodlit court, @60 per floodlit court	Used capacity	Comments		
						Open access, informal use	Publicly accessible, available for hire	Restricted to specific club							Any other general comments from audit	Club survey comments	Investment needs
Middle	Fleckney Sports Club, Leicester Road	Fleckney Sports Club	3	3	Synthetic grass		Y		96%	100%	100%	unknown	180	20%	AGP also marked for football		
Middle	Foxton Tennis Club, Middle Street	Foxton Tennis Club	2	0	Porous macadam			Y	100%	88%	50%	70	80	88%			
Middle	Great Bowden, Station Road	Market Harborough Lawn Tennis Club	3	3	Porous macadam			Y	96%	88%	67%	190	180	106%			
Middle	Husbands Bosworth Recreation Ground, Kilworth Road	Husbands Bosworth Tennis Club	2	1	Porous macadam			Y	88%	0%	50%	56	100	56%			
Middle	Market Harborough, Welland Park	Welland Park Tennis Club	5	3	Porous macadam		Y	Y	92%	30%	67%	36	260	34%	Club has access to shared pavilion with bowls, but this is relatively poor quality with no showers. Car parking is limited in space and time.		
Middle	North Kilworth, South Kilworth Road	North Kilworth Sports Association	2	2	Porous macadam			Y	88%	75%	100%	unknown	120				

West sub area

Sub Area	Site	Club name	Total number of courts	Number of floodlit courts	Surface type	Access			Summary score for courts	Summary score for changing pavilion	Summary score for signage	LTA membership	Site capacity @ 40 members / non-floodlit court, @60 per floodlit court	Used capacity	Comments		
						Open access, informal use	Publicly accessible, available for hire	Restricted to specific club							Any other general comments from audit	Club survey comments	Investment needs
West	Bitteswell, Lutterworth Football Academy, Hall Lane	Lutterworth Tennis Club	5	5	Porous macadam			Y	100%	100%	100%	273	300	91%		Approx 60% of members are juniors. Members live within 20 minutes of site, but all within Harborough district. Affiliated clubmark club with development plan. Has waiting list of up to 30 minis and 20 Juniors because the coaching programme is full. The club has grown in the last 5 years and expects to grow in the future. The limitations to the growth are; access to facilities/lack of facilities, cost of facilities/hire charge and a lack of funding. Club leased facility (2036). All 5 courts were newly laid in 2013 and the clubhouse was refurbished in 2016.	Dome over 2 courts
West	Gilmorton, Recreation Ground Lutterworth Road	Gilmorton Tennis Club	2	0	Porous macadam		Y	Y	85%	0%	100%	24	80	40%		Club has seen decreasing membership over the last 5 years and does not anticipate growing, as there is a lack of volunteers, access to facilities and issues with the recruitment of members. The club leases the facility with lease up to 2023. Court resurfaced last year. Club only plays social tennis.	

East sub area

Sub Area	Site	Club name	Total number of courts	Number of floodlit courts	Surface type	Access			Summary score for courts	Summary score for changing pavilion	Summary score for signage	LTA membership	Site capacity @ 40 members / non-floodlit court, @60 per floodlit court	Used capacity	Comments		
						Open access, informal use	Publicly accessible, available for hire	Restricted to specific club							Any other general comments from audit	Club survey comments	Investment needs
East	Billesdon, Coplow Centre, Uppingham Rd	Coplow Centre	1	1	Porous macadam	Y			96%	100%	100%	0	60	20%			
East	Bushby, Wadkins Recreation Ground	Thurnby & Bushby Tennis Club	2	0	Porous macadam			Y	85%	0%	67%	13	80	16%			
East	Great Glen Recreation Ground	Great Glen Tennis Club	3	3	Porous macadam			Y	100%	0%	100%	105	180	58%	Courts built in 2015/16. Currently no changing provision.	Members live within about 10 mins from the club and all live in Harborough. The club has increased in the last 5 years and expects to continue to grow. It does not have a waiting list. A lack of funding, the recruitment of members and lack of marketing of the club are the main issues restricting growth. Club has a long term lease, up to 2040. The club is currently renovating building to provide changing.	Acoustic fencing - club has planning permission but insufficient funds.
East	Hallaton, Recreation Ground	Hallaton Recreation Ground	2	0	Porous macadam	Y			85%	100%	100%	0	80	20%			
East	Houghton on the Hill, Weir Lane	Houghton Tennis Club	3	3	Porous macadam			Y	100%	100%	100%	123	180	68%			
East	Hungarton, Millenium Green, Barley Leas	Hungarton Sports Club	1	0	Porous macadam			Y	95%	0%	100%	unknown	40				
East	Kibworth, Smeeton Rd	Kibworth Tennis Club	5	5	Porous macadam			Y	100%	50%	75%	251	300	84%		Approx 46% of members are juniors or minis, and all live locally, within about 5 minutes of the club, with most living within Harborough district. Affiliated club with developmetn plan. Club has stayed same size over last 5 years, but anticipates growing. Main limitation is a lack of funding. Club leases site (to 2031). 5 courts. 4 courts require resurfacing, one was built in 2015. Changing facilities are poor quality.	New clubhouse
East	Medbourne Sports & Social Club, Hallaton Rd	Medbourne Tennis Club	3	3	Porous macadam			Y	100%	100%	100%	181	180	101%		No waiting list. 74% of members are seniors or veterans. Almost all live in Harborough with small number from Corby and Rutland. Membership has stayed same over last 5 years but club anticipates growing in the future. Club owned site. Courts resurfaced in 2015.	
East	Tilton, Village Hall	Tilton and District Sports Club	1	1	Porous macadam		Y	Y	88%	100%	17%	unknown	60	20%			

Consultation

Club comments

2.9 All of the tennis clubs identified by Harborough District Council in their clubs list for summer 2017 were consulted about their clubs, their sites and aspirations. The feedback provided, including their investment needs, is incorporated into Figure 4 above.

National Governing Body comments and strategies

2.10 The Lawn Tennis Association (LTA) is the national governing body for tennis, and has provided the latest membership numbers for the clubs. The LTA have also provided comments on the draft report.

2.11 The LTA is committed to growing the sport to ensure that more people are playing tennis more often at first class tennis facilities, with high quality coaching programmes and well organised competition. The LTA's investment programme Transforming British Tennis Together (British Tennis, 2017) will see the LTA invest £125m over the next 10 years in British tennis facilities. The aim is to double the number of children playing tennis and to double the number of infrequent adults play tennis. Amongst the outcomes will be a doubling of the number of covered and floodlit courts and every site which receives investment must have an online booking and simple court access system. The monies which the LTA have set aside for the programme are expected to be matched by other investment from partners. The LTA funding will be half by grant and half by interest free loan.

2.12 LTA research shows that it is important to work across different playing environments to create the right mix of local facilities to support the broad range of players that engage with the sport. Their insight data shows that parks can offer a larger base of players but clubs deliver a far higher proportion of regular players, so there is a need to make sure the facilities provided are appropriate to the needs of the players accessing them – which includes a variety of price points in any one geographical location.

2.13 The emphasis on the availability of sites being free or pay as you play has led to some LTA projects in parks, but there are no such projects in Harborough.

2.14 The LTA assesses the capacity of affiliated club sites using the following formula:

- Maximum capacity of a non-floodlit court: 40 members
- Maximum capacity of a floodlit court: 60 members
- Minimum size of club to justify indoor court: 200 members

2.15 The LTA does not assess the open access / community hire courts in terms of capacity, but has agreed that:

- The peak period is May-August

- Weekdays 16.00-21.00
- Saturdays 10.00-17.00
- Sundays 10.00-14.00

2.16 It is estimated from similar strategy work in Daventry district, South Northants district and Northampton that open access courts/courts available for hire are used at an average of around 20% of the time in the peak period where there is no club on site. Where there is a club on site, the pay and play use is around 10% of the time in the peak period. These estimates have been confirmed with the LTA as a suitable basis for modelling, and have been used in the assessment of capacity modelling in this study.

Modelling

Assessment of capacity

2.17 The assessment of the used capacity of the existing tennis court sites is a key factor in determining the future investment requirements for the sport. The modelling in Figure 4 is based on the LTA's advice and agreed approach towards the assessment of both the club sites and the open access sites/those available for hire (see para 2.12 - 2.15). It is not possible to assess the used capacity of all of the club sites as not all clubs responded to the club survey and the LTA has not been able to provide the affiliated membership figures for all clubs.

2.18 However the sites which are already operating at full capacity or close to it include the main club sites and around Market Harborough and Lutterworth, and also Kibworth and Medbourne. The details are:

- Market Harborough Tennis Club, Great Bowden (100%), 190 members
- Medbourne Sports and Social Club, (100%), 181 members
- Lutterworth Tennis Club, Bitteswell (91%), 273 members
- Foxton Tennis Club, Foxton (88%), 70 members
- Kibworth Tennis Club, (84%), 251 members

2.19 There is spare capacity on all of the other sites in the network, including the Welland Park's courts in Market Harborough.

Assessment of Future Needs

Quantity

2.20 The total population of Harborough district is expected to rise from 89,900 in 2017 to 116,673 by 2031, an increase of 30%.

2.21 Most of this growth is around Market Harborough, and in association with the East of Lutterworth Strategic Development Area, and Scraftoft North Strategic Development Area.

- 2.22 There is no spare capacity at either Market Harborough Tennis Club or Foxton Tennis Club to cater for additional demand from the growth of the town. However there is capacity at Welland Park and the capacity of Foxton Tennis Club could be increased by the floodlighting of both courts. These sites should therefore be able to meet the demand from the housing growth around Market Harborough. However there is a need to improve the clubhouse and car parking provision at Welland Park, and to floodlight the courts at Foxton.
- 2.23 In relation to the East of Lutterworth SDA, there is a small amount of spare capacity at Lutterworth Tennis club, but the site at Gilmorton is only running at about 40% used capacity. The Gilmorton tennis courts are within a 10 minute drive of the SDA, and there is a small but affiliated club on site. The Gilmorton site capacity could be further increased if both of the courts were floodlit.
- 2.24 For the Scaptoft North SDA the two closest clubs are the Thurnby & Bushby club at Wadkins. Bushby, and Houghton Tennis Club at Houghton on the Hill, both within a 10 minutes drive time. Both of these clubs have spare capacity on the courts which could meet the demand arising from Scaptoft North SDC, but the Thurnby & Bushby site has no changing provision/clubhouse, and this would be required for the site to respond to the demand from Scaptoft SDC.

Quality

- 2.25 There are a number of sites across Harborough which could potentially meet the needs of the projected demand up to 2033, but they require investment to provide or improve the court quality including floodlighting, and all of the key sites require good quality clubhouse / changing provision and adequate car parking.
- 2.26 There are also a small number of specific aspirations identified by the clubs.
- 2.27 The other open access sites in the district should be retained.

Accessibility

- 2.28 A 10 minute drive time catchment is appropriate for tennis. The existing network of provision should be retained.

Meeting the needs of the future

- 2.29 There is sufficient potential capacity at the existing tennis court sites within an acceptable drive time to meet the needs of the population of Harborough district up to 2033. In order to meet this demand, some of the sites require investment to ensure that they have good quality floodlit courts, with a good quality clubhouse and adequate car parking. Developers' contributions for the Strategic Development Areas should be to the sites with active clubs within approximately 10 minutes drive time.
- 2.30 The identified club site development projects should also be supported if shown to be justified and sustainable. These are:

- Lutterworth Tennis Club – dome over 2 existing outdoor courts
- Great Glen Tennis Club – acoustic fencing
- Kibworth Tennis Club – new clubhouse

Justifying developers' contributions

2.31 There are currently 45 full size outdoor tennis courts available for community use in the district. If the number of courts stays the same but the population increases up to 2031 to 116,673 then this will give a rate of provision of 0.38 courts per 1,000 population.

2.32 The provision guide for outdoor tennis, justified by this assessment, is proposed to be:

Quantity per 1,000 population	Accessibility	Quality
0.38 courts, available at all times.	10 minutes by car	Design and quality to meet Sport England and Lawn Tennis Association guidance.

Recommendations for outdoor tennis

Council's role in tennis provision

2.33 To support the Council's policies on health and well-being, as well as supporting sports participation, performance and excellence, the Council will:

- continue to support tennis clubs across the district and encourage the retention of pay and play or open access courts.
- ensure planning policies support the improvement of clubs, and new provision where appropriate.
- seek developers' contributions towards improvements at the existing outdoor tennis sites within an accessible drive time.

Sites

Protect

2.34 It is proposed to protect and maintain the existing network of outdoor dedicated tennis courts, with the priority being those which host active clubs.

Enhance

2.35 Increase the capacity and quality of the tennis sites where local investment projects are justified.

2.36 Increase the capacity at the existing club sites to meet the demands arising from new housing, with the priorities being:

Short term

- Market Harborough, Welland Park: improve clubhouse and seek to extend car parking
- Foxton, Foxton Tennis Club: floodlight both courts
- Lutterworth Tennis Club: cover 2 courts
- Great Glen Tennis Club – acoustic fencing
- Kibworth Tennis Club – new or refurbished clubhouse

Medium term

- Gilmorton: provide clubhouse

Long term

- Gilmorton: floodlight both courts
- Bushby, Wadkins, Thurnby & Bushby tennis club: provide clubhouse

SECTION 3: NETBALL

- 3.1 Netball is primarily a female activity and has been growing in popularity over the last 10 years. Nationally, Sport England (Sport England , 2016) estimates that 0.51% of adults aged 16 years and over take part in netball at least once a month.
- 3.2 Most of the netball activity takes place outdoors, although some clubs have some training indoors. To be used for netball, halls are required to be at least 34.5 x 18.25 m in size.

Current provision and assessment

- 3.3 The Facilities Factsheet of England Netball for Leicestershire & Rutland includes information collected by the national governing body in 2014/15. Most of the information is provided on a county basis, and the factsheet identifies that there is a similar rate of provision of outdoor courts across the county as the national average which is 2 courts per 10,000 females aged 16 and over. The provision of indoor courts is higher than the national average of 1 court per 12,000 females aged 16 and over. Across the county the feedback from clubs shows that:
- 42% of venues are education sites
 - Over 66% of clubs consider that the changing facilities are inadequate for their needs
 - 35% of clubs consider the venues to be very good, with the rest being either good or average
 - 46% of clubs find it easy to book venues
- 3.4 Only one of the five sites in Leicestershire & Rutland considered by England Netball to be key venues, instrumental to both achieving the growth targets and delivering a first class experience for existing members is in Harborough District at Harborough Leisure Centre in Market Harborough. This site was considered to have both average quality courts and average quality ancillary facilities.
- 3.5 The England Netball national database for Harborough shows that there are clubs using courts at:

Harborough Leisure Centre

- 3.6 The leisure centre has 2 covered courts (in the dome) and one indoor court in the sports hall. The site is used for both league matches and as club home site for training. The estimated number of people playing on a weekly basis at the site is around 60. There are concerns about the future proposals to redevelop/replace the leisure centre. The facilities and courts are considered to be average quality.

Lutterworth College

- 3.7 This is the home site for one club, with around 15 regular players. There is one indoor court in the sport hall but there are also two outdoor courts. The facilities are considered to be good quality.

Robert Smyth Academy, Market Harborough

- 3.8 This site has one indoor court and 2 outdoor courts, but the quality of the courts are described as poor. The site is used by one club and England Netball notes that the site could have significant potential for netball if the quality was improved.

Lutterworth Leisure Centre

- 3.9 This has one indoor court in the sports hall, and is used for some club training, with about 10 players.
- 3.10 There are also courts at the following sites, but these are not used for community netball. The comments are taken from England Netball's Harborough database.

Site	Number of courts	England Netball comments
Fleckney Sports Centre	0	The indoor facility is too small but it would be a useful location if the facilities were adequate.
Kibworth Academy	2 outdoor, 1 indoor	Courts in poor quality so not currently used. Would be a useful location for community netball if facilities were adequate.
Thomas Estley Community College	2 outdoor, 1 indoor	Courts in poor quality so not currently used. Would be a useful location for community netball if facilities were adequate.
Welland Park Academy	2 outdoor, 1 indoor	Courts in poor quality so not currently used. Would be a useful location for community netball if facilities were adequate.

- 3.11 The community demand for netball at these currently unused sites is not specially identified by England Netball, so at this time there is no justification for investment into them for court improvements.

Assessment of Future Needs

- 3.12 There is clearly a high level of potential capacity for netball across the district, especially if the poorer quality courts at the school sites were improved. The most critical issue is the redevelopment of the leisure centre and the impact on it as a key county facility. It is the only site with three indoor/covered courts, and as such as become the centre for the league.
- 3.13 It will be important for the replacement leisure centre to also have this capacity.

Meeting the needs of the future

- 3.14 The highest priority is the size and design of the replacement Harborough Leisure Centre, as the continuation of league netball will be determined by this. Ideally there should be 3 covered/indoor courts at minimum, plus potentially outdoor courts.
- 3.15 Should the sport continue to expand, and also depending upon the replacement leisure centre design, then there may be a need for investment into either Welland Park Academy or to Robert Symth Academy to enable more league matches and club training.

Justifying developers' contributions

- 3.16 It is not currently proposed to seek developers' contributions for netball facilities in Harborough.

Recommendations for netball

Protect

- 3.17 The existing facilities which are used for netball.

Enhance and provide

- 3.18 Provide or enhance netball courts in Market Harborough that meet the requirements of netball according to the evidence of need.

SECTION 4: SUMMARY BY SITE

4.1 This section summarises the findings and proposals site by site in Figure 5.

Notes and key for the site summary table

Site control and delivery partners

The site control column shows the organisation responsible for the site. This will usually be the site owner unless it is on a long term (5 years plus) lease e.g. to a sports club.

The delivery partners are those organisations which are expected to lead the projects. Where significant project investment is anticipated, Harborough District Council is included as funding could be allocated from S106 developers' contributions towards the proposal.

A	Secondary school academy
Club	Sports club
Comm	Commercial organisation
HDC	Harborough District Council (including via S106)
PC	Parish Council, local playing field association, village hall charity or similar
Private	Private
TC	Town Council
Trust	Leisure Centre operator

Security of use

- S Site with secure community use
- UnS Site without security of use

Quality of changing

The quality of the changing facilities/clubhouse. Usually relevant to whole site.

	Good
	Standard/adequate
	Poor
	No changing/clubhouse on site

Facility type

Outdoor bowls

Tennis courts, surface and number floodlit. PM = porous macadam, AGP = artificial grass

Netball courts, indoor and outdoor

Green/court quality

Based on the agreed pitch quality from: site audit, user clubs, NGB, authority and pitch providers.

	Good quality
	Standard quality
	Poor quality

Spare capacity

	Site could provide for significantly more activity (depending on programming for leisure centres)
	Site has some space for more activity (depending on programming for leisure centres)
	Site has no spare capacity

- 4.2 The priorities for the specific projects are identified as High, Medium and Low. These are defined as:

High priority (H)	Facility or project essential for meeting the current and future projected needs of the community across Harborough, particularly for the sports/facilities with high levels of participation. High priority is also given to projects which will attract those less active, or sited in areas with deprivation.
Medium priority (M)	Facility or project which will help to meet the current and future projected needs of the community across Harborough for the sports/facilities with moderate levels of participation.
Low priority (L)	Facility or project which will help to meet the current and future projected needs of the community across Harborough but where the sport/facilities have low levels of participation, or where the project's aims are already partially addressed by other projects in the area identified at higher levels of priority.

4.3 The phasing of the project investment is:

St	Short term	2018-2021
Mt	Medium term	2021-2026
Lt	Long term	2026-2031

Figure 5: Site by site summary

Middle Sub Area

Site Name	Site control	Security of use	Quality of changing	Outdoor bowls green	Outdoor tennis court F floodlit N not floodlit	Tennis court surface	Netball courts	Green/court quality	Spare capacity	Site issues/ comments	Proposal	Priority and phasing	Estimated capital cost (£000's)	Main delivery partners	
Fleckney Sports Centre (Fleckney Sports Club, Hart of Fleckney Bowls Club)	PC	S		1						Hart of Fleckney Bowls Club					
											Hall too small for netball court				
					3 F	AGP					Courts also marked out for football				
Foxton Tennis Club	Club	S		2 N	2 PM				Courts not floodlit	Floodlight courts to increase capacity	M Mt	£22,500	Club HDC LTA PC		
Great Bowden Market Harborough Lawn Tennis Club	Club	S			3 F					No spare capacity.					
Harborough Leisure Centre	Trust	S					3 Indoor			Used by netball league and as home site for club. A key county site for netball. Concern re potential loss for netball if leisure centre replaced as uses both sports hall and dome for league.	Provide or enhance netball courts in Market Harborough that meet the requirements of netball according to the evidence of need.	H St	tbc	HDC	
Husbands Bosworth Tennis Club	Club	S			1 F 1 N					No clubhouse.	Provide basic clubhouse	M Mt	£245,000	Club PC	
Little Bowden Bowls Club	Club	S													

Site Name	Site control	Security of use	Quality of changing	Outdoor bowls green	Outdoor tennis court F floodlit N not floodlit	Tennis court surface	Netball courts	Green/court quality	Spare capacity	Site issues/ comments	Proposal	Priority and phasing	Estimated capital cost (£000's)	Main delivery partners
Market Harborough Conservative Club	Club	S		1						The green's design means that it can only be played one way and this causes wear on the ends so the membership is limited by the club to approx 60. The quality of the green is good, but some works needed to improve playing surface. Equipment is good but could be improved. Needs improved equipment storage.	Improve green to increase capacity, extend if possible. Improve equipment storage.	L Lt	tbc	Club
North Kilworth Bowls Club	Club	S								Changing facilities very small				
North Kilworth Sports Assn	PC	S			2 F	PM								
Robert Smyth Academy	A	Us					1 Indoor 2 Outdoor			Used by one netball club for training.				
South Kilworth Bowls Club	Club	S		1										
Welland Park Academy	A	Private					1 Indoor 2 Outdoor			Outdoor courts poor quality. Site not used by community netball.				
Welland Park, Market Harborough (Welland Park Bowls Club, Welland Park Tennis Club)	HDC	S		2						Annual licence to bowls club. High level of spare capacity. Poor quality clubhouse shared with tennis. Inadequate car parking but may be difficult to address.	Improve clubhouse and extend car parking with additional time allowed for players.	H St	tbc	HDC
					3 F 2 N				Spare capacity can meet demand from developments around Market Harborough if car parking and clubhouse improved.	Consider converting 2 nd bowls green to other uses.				

West sub area

Site Name	Site control	Security of use	Quality of changing	Outdoor bowls green	Outdoor tennis court F floodlit N not floodlit	Tennis court surface	Netball courts	Green/court quality	Spare capacity	Site issues/ comments	Proposal	Priority and phasing	Estimated capital cost (£000's)	Main delivery partners
Bitteswell Wycliffe Bowls Club, Lutterworth Football Centre	Comm	S												
Lutterworth Tennis Club, Lutterworth Football Centre				5 F	PM					Site has effectively no spare capacity. Club wishes to explore option of covering 2 courts to increase capacity.	Cover 2 courts subject to feasibility study. Would require formal community use agreement. Cost dependent on cover type.	M Mt	tbc	Club LTA HDC
Gilmorton Recreation Ground, Gilmorton Tennis Club	PC	S			2 N	PM				No clubhouse. Could meet some of future demand from East of Lutterworth SDA.	Provide clubhouse	Lt Mt	£245,000	Club PC HDC
Lutterworth College	A	UnS					1 Indoor 2 Outdoor			Home site for one small netball club (15 players)				
Lutterworth Leisure Centre	Trust	S					1 Indoor			Used for some netball training				
Lutterworth Town Bowls Club, Recreation Ground	PC	S		1						Adjacent to leisure centre				
Thomas Estley Community College	A	Private					1 Indoor 2 Outdoor			Not currently used for community netball				

East sub area

Site Name	Site control	Security of use	Quality of changing	Outdoor bowls green	Outdoor tennis courts Number and if floodlit F floodlit N not floodlit	Tennis court surface	Netball courts I Indoor O Outdoor	Green/court quality	Spare capacity	Site issues/ comments	Proposal	Priority and phasing	Estimated capital cost (£000's)	Main delivery partners
Billesdon Coplow Centre	PC	S			1 F	PM				Open access site				
Bushby Thurnby & Bushby Tennis Club	PC	S			2 N	PM				No changing. Small affiliated club.	Potential to meet demand arising from Scraftoft North SDA. Provide changing	H Lt	£245,000	Club HDC
Great Glen Recreation Ground Great Glen Tennis Club	Club	S			3 F	PM				New courts but no changing. Club currently renovating building to provide clubhouse.				
Hallaton Recreation Ground	PC	S			2 N	PM				Open access site with no club.				
Houghton on the Hill, Houghton Bowls Club	Club	S								4 lane green which requires full refurbishment. Club uses village hall as clubhouse.	Improve green	L Mt	tbc	Club
Houghton on the Hill, Houghton Tennis Club	Club	S			3 F	PM								
Hungarton, Hungarton Sports Club	PC	S			1 N	PM				No changing provision.	Provide basic clubhouse	L St	£245,000	Club PC
Kibworth Bowls Club	Club	S		1										
Kibworth School	A	Private					1 Indoor 2 Outdoor			Outdoor courts poor quality. Not used for community netball.				
Kibworth Tennis Club	Club	S			5 F	PM				Large affiliated club. 4 of the 5 courts require resurfacing. Other is new. Changing facilities are poor quality.	Resurface 4 courts. Refurbish clubhouse	H St H St	tbc tbc	Club LTA PC HDC

Site Name	Site control	Security of use	Quality of changing	Outdoor bowls green	Outdoor tennis courts Number and if floodlit F floodlit N not floodlit	Tennis court surface	Netball courts I Indoor O Outdoor	Green/court quality	Spare capacity	Site issues/ comments	Proposal	Priority and phasing	Estimated capital cost (£000's)	Main delivery partners
Medbourne Bowls Club	Club	S		1										
Medbourne Sports and Social Club, Medbourne Tennis Club	Club	S			3 F	PM				Large affiliated club. Site fully used but good quality.	Explore options for providing additional court/s.	M St	£30,000 per court	Club PC LTA
Tilton Village Hall, Tilton and District Sports Club	PC	S			1 F	PM				Poor signage.	Improve signage	H St	£5000	PC



Nortoft Partnerships Limited
2 Green Lodge Barn, Nobottle, Northampton NN7 4HD
Tel: 01604 586526 Fax: 01604 587719
Email: info@nortoft.co.uk Web: www.nortoft.co.uk