

# APPENDIX 1: PROFILE OF HARBOROUGH

## Health

1.1 People in Harborough are generally healthier than Leicestershire averages, and significantly better than national averages. Public Health England's Harborough Health Profile's summary is given below for 2017, and the profile given in (Figure 1) (Public Health England , 2017)

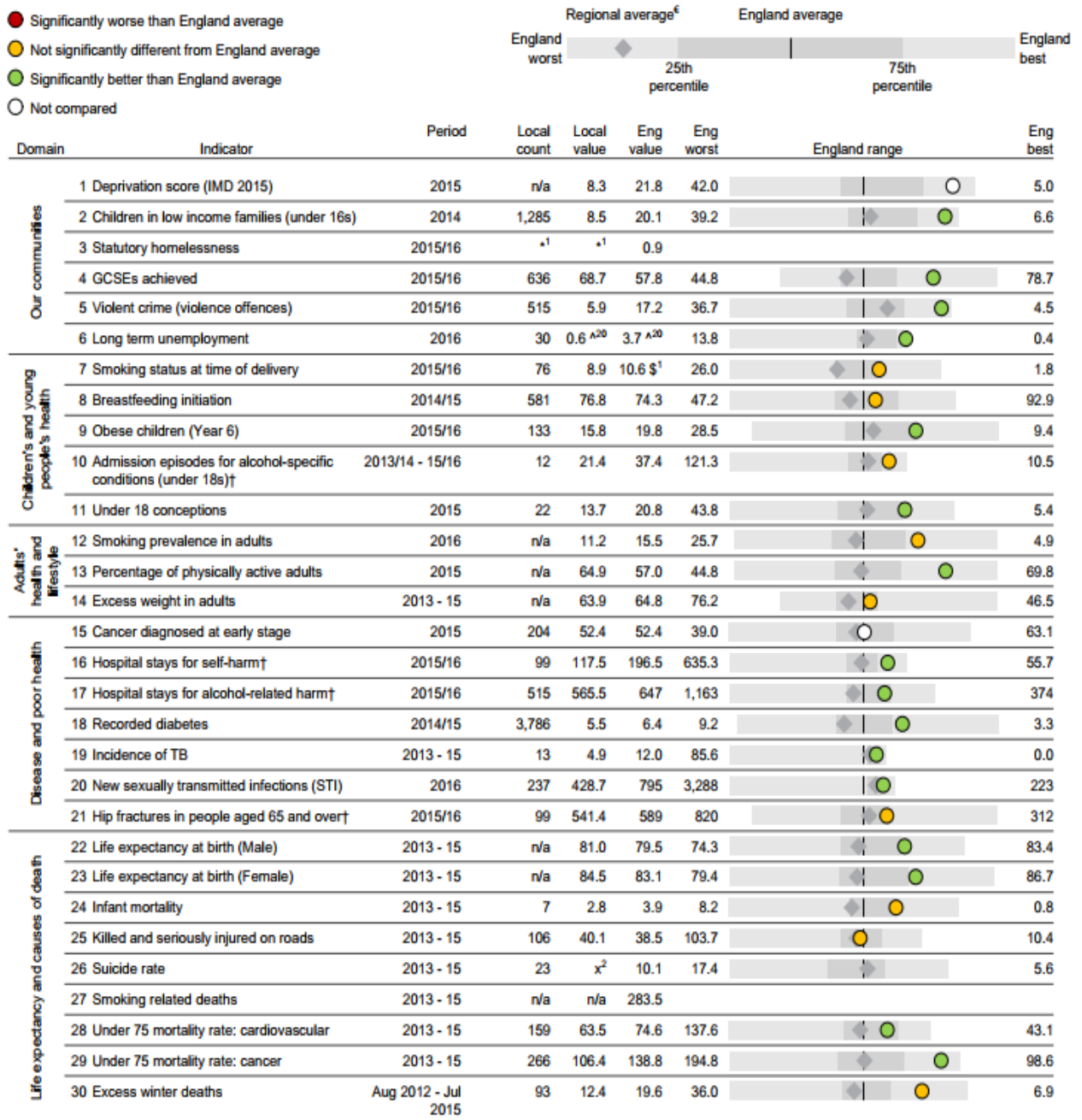
- Life expectancy is high for both men and women, higher than the England average.
- There are no notable health inequalities within the district.
- Of Year 6 children, 15.8% are classified as obese, better than the average for England.
- Estimated levels of physical activity in adults is higher than the England average.
- The priorities for Harborough include maintaining positive mental health, healthy weight, and supporting young and ageing population.

1.2 The Sport England Local Profile Tool (Sport England, 2017) suggests that the top sports in the district are cycling, gym sessions and swimming. At the same time, the cost of physical inactivity in Harborough per 100,000 people per year based on estimates by the British Heart Foundation (Sport England, 2017) in 2009/10 was £1,586,606. This compares with the higher East Midlands average of £1,759,906 and that of the national average of £1,817,285.

Figure 1: Health Profile for Harborough  
(Source: Public Health England)

The chart below shows how the health of people in this area compares with the rest of England. This area's result for each indicator is shown as a circle. The average rate for England is shown by the black line, which is always at the centre of the chart. The range of results for all local areas in England is shown as a grey bar. A red circle means that this area is significantly worse than England for that indicator; however, a green circle may still indicate an important public health problem.

- Significantly worse than England average
- Not significantly different from England average
- Significantly better than England average
- Not compared



## Employment

- 1.3 Employment trends in the sub-region have generally followed national trends and these are mirrored locally in Harborough; employment in offices has increased since the early 1990's, and industrial employment has been in decline. Employment within warehousing has grown more strongly and steadily in the district, than in the sub-region.
- 1.4 Sport and recreation facilities can support employment opportunities directly and indirectly. Sport England (Sport England, 2017) estimates that the value of sport and active recreation based on their Economic Value of Sport research for Harborough is:
- Gross Value Added (GVA) wages and operating profits in 2013:
    - GVA from people participating in sport: £18.4m
    - GVA from wider non participation interests: £3.1m
    - Total (£m): £21.6m
  - Total sports related jobs (both participation and wider non-participation interests) in 2013:
    - 649
  - Economic value of health benefits of participating in sport and active recreation in 2013:
    - £36.3m
  - Total sporting business stock (sports businesses) in 2016:
    - 80 businesses
    - Equates to 1.42% of Harborough's local economy – which is higher the national average of 1.05%, at the regional average of 1.06%.
  - Economic value of sports volunteering in 2013:
    - £10.9m

## Participation in sport and active recreation

1.5 Sport England released its first report called Active Lives in January 2017 (Sport England, 2017). Active Lives is broader than the previous Active People Survey as it includes walking and cycling for both leisure and travel, dance and gardening, in addition to the sporting and fitness activities included in the previous Active People Survey.

1.6 The table shows the levels of activity of adults aged 16+ years in the authority and its CIPFA benchmark comparator authorities. The definitions are:

Moderate activity: This is defined as activity where you raise your heart rate and feel a little out of breath.

Vigorous activity: This is where you are breathing hard and fast and your heart rate has increased significantly (you will not be able to say more than a few words without pausing for breath).

Moderate intensity equivalent (MIE) minutes: means each 'moderate' minute counts as one minute. Any vigorous activity counts for double, so each vigorous minute counts as two moderate minutes. The 30 MIE minutes can be achieved in one go or in chunks of at least 10 minutes across different days through a combination of physical activities.

Inactive: someone who, over the course of a week, does not achieve a total of 30 moderate intensity equivalent (MIE) minutes of physical activity.

Fairly active: someone who is active for 30-149 minutes a week.

Active: someone who is active for at least 150 minutes a week.

1.7 The data in Figure 2 suggests that there are more Harborough residents which are inactive than the national or regional average, any any of the benchmark authorities, and there are also fewer people who are either "fairly active" or "active". However this result from the Active Lives Survey is directly counter to the the previous annual findings of the Active People Survey, over the last 12 years. The Active Lives Survey has very wide confidence levels for Harborough district because of the sample size, so the fact that the findings are counter to the Active People Survey results, suggest that they should be largely discounted.

Figure 2: Sport and physical activity levels for adults

Authority	Inactive (<30 minutes a week)	Fairly active (30-149 minute a week)	Active (150+ minutes a week)
<b>Harborough</b>	<b>23.2%</b>	<b>13.1%</b>	<b>63.7%</b>
Daventry	23.0%	15.8%	61.3%
Maldon	18.8%	12.3%	68.9%
Ribble Valley	16.0%	13.9%	70.1%
South Northants	19.4%	10.1%	70.5%
East Midlands	22.2%	12.3%	65.5%
England	22.0%	12.6%	65.4%

1.8 The Active Lives Survey report shows that:

- more males are active than females
- participation in sport and physical activity declines with age
- activity levels for people with a disability decreases as the number of impairments increase
- the higher the socio-economic group, the more active
- the difference between the number of men and women taking part is greatest for sporting activities
- several of the new activities that form Sport England’s extended remit are more popular with women than with men.

1.9 These trends suggest that the highest priorities for Harborough are to encourage and support those people who are inactive or only fairly active to become more so and that the investment priorities should be opportunities which are /can be made available to both young children and to older people, those in the lower socio-economic groups, and activities that attract women and girls.

1.10 The Key Performance Indicators which back the Government’s strategy, *Sporting Future, A New Strategy for an Active Nation* (Dept for Culture, Media & Sport, 2015) and which are measured in Active Lives are:

KPI 1 – Increase in percentage of the population taking part in sport and physical activity at least twice in the last month

KPI 2 – Decrease in percentage of people physically inactive

KPI 3 – Increase in the percentage of adults utilising outdoor space for exercise/ health reasons

KPI 4 – Increase in the percentage of children achieving physical literacy standards

KPI 5 – Increase in the percentage of children achieving swimming proficiency and Bikeability Levels 1-3

KPI 6 – Increase in the percentage of young people (11-18) with a positive attitude towards sport and being active

## Market Segmentation

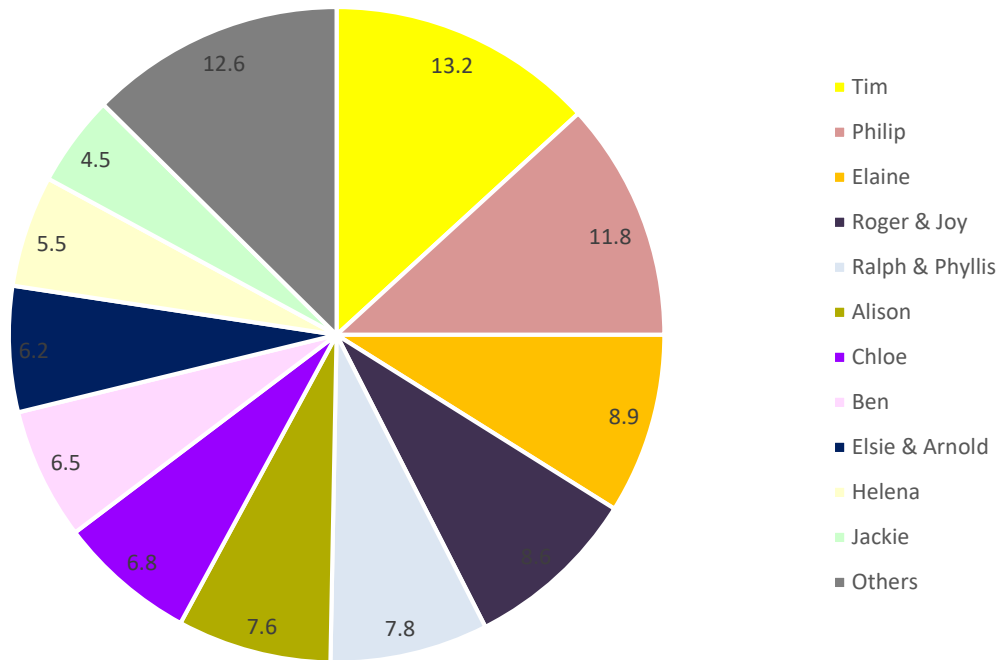
- 1.11 Sport England has developed nineteen sporting segments to help understand individuals' attitudes and motivations to sports and physical activity and this tool is a useful extension of the other socio-economic mapping available from elsewhere. The information used to develop these segments is derived from information sourced primarily from the Active People Survey, but also from the census, and supplemented with information from other market research surveys.
- 1.12 The intelligence provided by the Market Segmentation tool helps in the understanding of why particular sports have more demand than others in an authority, and highlights any significant differences in areas across the authority. In turn this will help to identify which facility types should be the highest priority in each area.
- 1.13 Each of the nineteen segments is identified as having different characteristics in relation to patterns of physical activity, listed in Figure 3 . Appendix 1 provides more detail on the types of activities which appeal to each, and their motivation for participating in sport. The market segmentation data is available at local authority level as well as lower and middle super output areas.

*Figure 3: Sport England market segments*

Type of person	Name
Competitive Male Urbanites	Ben
Sports Team Lads	Jamie
Fitness Class Friends	Chloe
Supportive Singles	Leanne
Career Focused Females	Helena
Settling Down Males	Tim
Stay at Home Mums	Alison
Middle England Mums	Jackie
Pub League Team Mates	Kev
Stretched Single Mums	Paula
Comfortable Mid-Life Males	Philip
Empty Nest Career Ladies	Elaine
Early Retirement Couples	Roger & Joy
Older Working Women	Brenda
Local 'Old Boys'	Terry
Later Life Ladies	Norma
Comfortable Retired Couples	Ralph & Phyllis
Twilight Year Gents	Frank
Retirement Home Singles	Elsie & Arnold

- 1.14 Sport England expects the use of the Market Segmentation tool as part of the assessment process for all sports strategies, and the information has been used in four ways.
- An authority-wide overview of the total population as a pie chart (Figure 4).
  - A whole authority map showing the geographical distribution of dominant market segments by Middle Super Output Area (MSOA), illustrated by the map at Figure 5, and by Lower Super Output Area for Market Harborough, Lutterworth, and the Fleckney/Scraftoft area in Figure 6.
  - Identification of key sports for the area (Figure 8).
  - Comparison of the population segments with the regional and national averages (Figure 7).
- 1.15 The key points for the playing pitch strategy from this market segmentation analysis are:
- Harborough is dominated by the following groups who are socio-economically secure and active:
    - “Tim” Setting down males
    - “Philip” Comfortable mid-life males
    - “Elaine” Empty nest carrier ladies
  - However there are also high numbers of older retired people.
  - The LSOA maps also show more clearly the areas dominated by older age groups, those areas coloured light blue, brown or dark blue.
- 1.16 The sports which each market segment group currently take part in, and what they would be attracted to, are given in Figure 8. For the pitch sports, only football appears as an activity currently participated in by the Tim and Philip groups, but given other sporting opportunities, they would be likely swap to golf. Tennis however is potentially an attractive sport, with several groups likely to take part given appropriate opportunities. Two of the older market segment groups play bowls.
- 1.17 It should be noted that the Market Segmentation tool is a snap-shot of the current picture, and unfortunately is not available for forecasting.
- 1.18 In summary, the Market Segmentation tool provides useful background information on the demographics of an area, and the activities which different communities in different places are likely to be interested in. The tool is referred to within each of the playing pitch strategy sections, as it gives a guide to the relative importance of different activities at a local and district level.

*Figure 4: Market segments (whole authority)*  
 (And percentage of residents)



Name	Type of person
Tim	Settling Down Males
Philip	Comfortable Mid-Life Males
Elaine	Empty Nest Career Ladies
Roger & Joy	Early Retirement Couples
Ralph & Phyllis	Comfortable Retired Couples
Alison	Stay at Home Mums
Chloe	Fitness Class Friends
Ben	Competitive Male Urbanites
Elsie & Arnold	Retirement Home Singles
Helena	Career Focused Females
Jackie	Middle England Mums



Figure 5: Market Segmentation map - MSOA level

# Dominant market segment by population



Catchment area:  
Harborough District

- Ben - 1
  - Jamie - 2
  - Chloe - 3
  - Leanne - 4
  - Helena - 5
  - Tim - 6
  - Alison - 7
  - Jackie - 8
  - Kev - 9
  - Paula - 10
  - Philip - 11
  - Elaine - 12
  - Roger & Joy - 13
  - Brenda - 14
  - Terry - 15
  - Norma - 16
  - Ralph & Phyllis - 17
  - Frank - 18
  - Elsie & Arnold - 19
- Catchment area
- Middle Super Output Areas

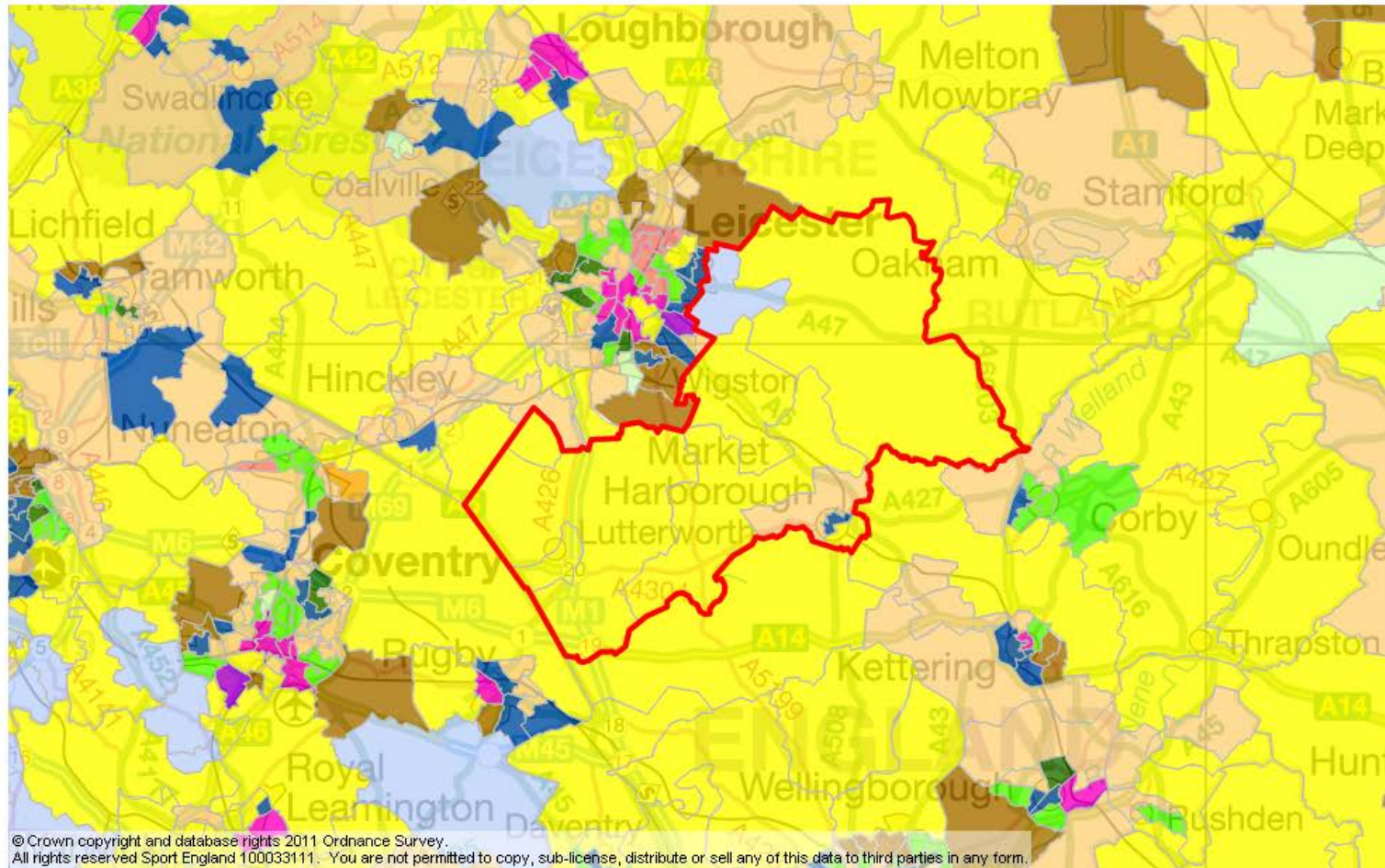
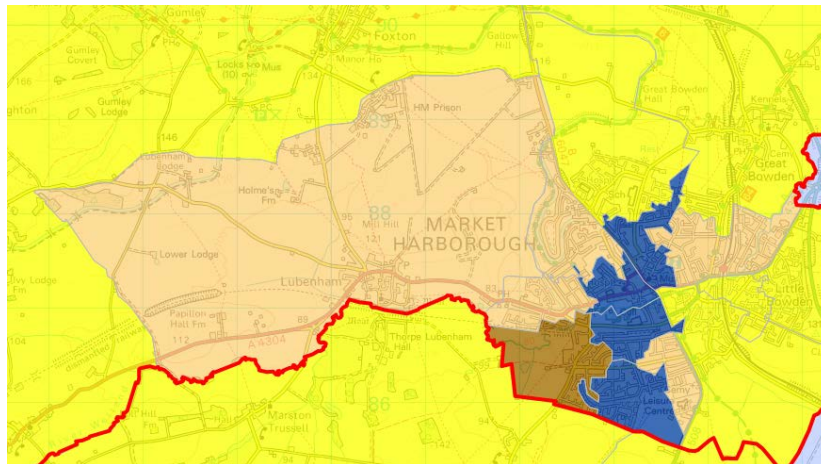
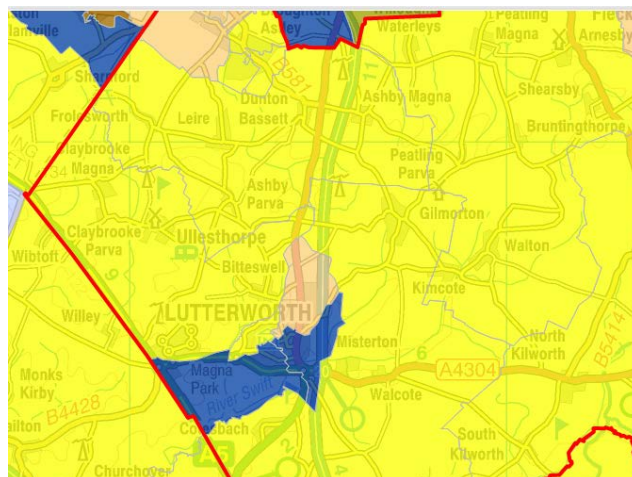


Figure 6: Market segmentation at LSOA level

Market Harborough



Lutterworth



Fleckney and Thurnby area

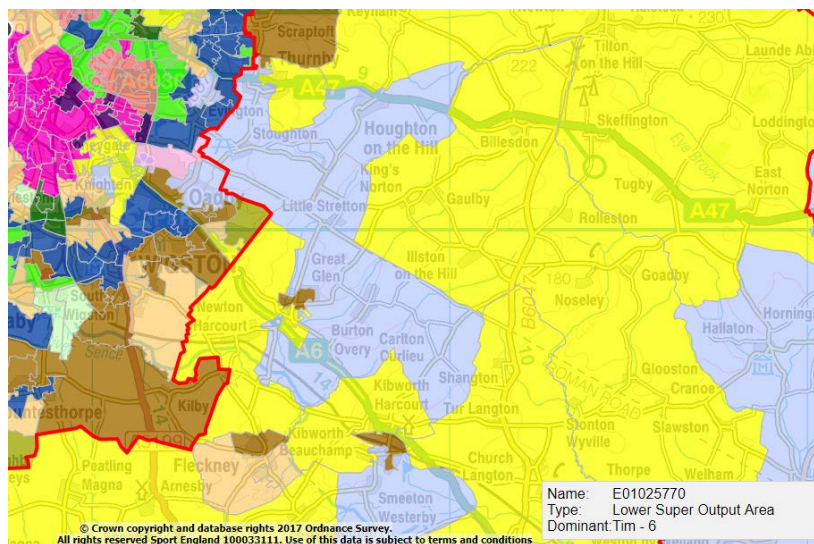


Figure 7: Market segment sizes compared to region and England

# Population of all segments within catchment area



Catchment area:  
Harborough District

- Harborough District
- Leicestershire
- East Midlands
- England

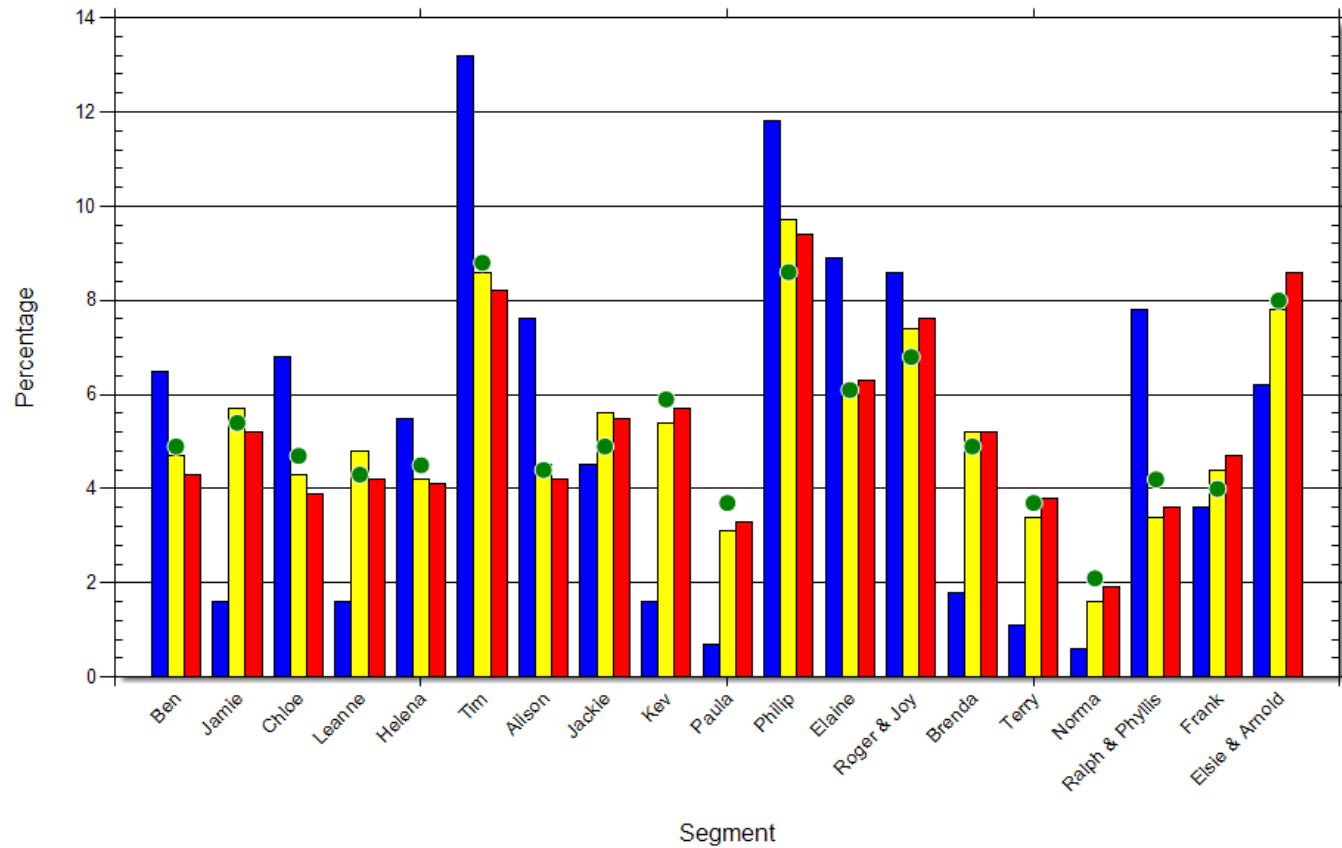


Figure 8: Market segmentation and interest in sport

Segment	Characteristic	Age	Marital status	Work type	Sports do now, decreasing order top 5					Sports would like to do more of, decreasing order top 5				
					1st	2nd	3rd	4th	5th	1st	2nd	3rd	4th	5th
Tim	Settling Down Male	26-45	Married or single. May have children	Professional	Cycling	Keep fit/gym	Swimming	Football	Athletics	Cycling	Swimming	Keep fit/gym	Athletics	Golf
Philip	Comfortable Mid Life Male	45-55	Married with children	Full time employment and owner occupier	Cycling	Keep fit/gym	Swimming	Football	Golf	Swimming	Cycling	Keep fit/gym	Golf	Athletics
Elaine	Empty Nest Career Ladies	46-55	Married	Full time employment and owner occupier	Keep fit/gym	Swimming	Cycling	Athletics	Tennis	Swimming	Keep fit/gym	Cycling	Badminton	Tennis
Roger & Joy	Early Retirement Couples	56-65	Married	Full time employment or retired	Keep fit/gym	Swimming	Cycling	Golf	Angling	Swimming	Keep fit/gym	Cycling	Golf	Athletics
Ralph & Phyllis	Comfortable Retired Couples	66+	Married/single	Retired	Keep fit/gym	Swimming	Golf	Bowls	Cycling	Swimming	Keep fit/gym	Golf	Cycling	Tennis
Alison	Stay-at-home mum	36-45	Married with children	Stay-at-home mum	Keep fit/gym	Swimming	Cycling	Athletics	Equestrian	Swimming	Keep fit/gym	Cycling	Athletics	Tennis
Chloe	Fitness Class Friends	18-25	Single	Graduate professional	Keep fit/gym	Swimming	Athletics	Cycling	Equestrian	Swimming	Keep fit/gym	Cycling	Athletics	Tennis
Ben	Competative Male Urbanites	18-25	Single	Graduate professional	Football	Keep fit/gym	Cycling	Athletics	Swimming	Swimming	Football	Cycling	Tennis	Athletics
Elsie & Arnold	Retirement Home Singles	66+	Widowed	Retired	Keep fit/gym	Swimming	Bowls	Golf	Cycling	Swimming	Keep fit/gym	Cycling	Tennis	Bowls
Helena	Career focussed females	26-45	Single	Full time professional	Keep fit/gym	Swimming	Cycling	Athletics	Equestrian	Swimming	Keep fit/gym	Cycling	Athletics	Tennis

## APPENDIX 2: POLICY FRAMEWORK

1. The overall approach towards the playing pitch strategy has started with the underlying characteristics of Harborough District and its anticipated growth up to 2031. The next step has been to consider the existing policies and drivers, including those from Government and objectives for sustainable development and improved health and well-being, and their local interpretation such as via the emerging Local Plan and neighbourhood plans, as well as other local relevant strategies. This section summarises the key documents.

### National Planning Policies

2. These planning policies provide the overall structure for planning policy which is then developed further within the local context.

### National Planning Policy Framework (2012)

3. The National Planning Policy Framework (NPPF) (Communities and Local Government, 2012) sets out the Government's national planning policies for new development. They aim to create the homes and jobs that the country needs while protecting and enhancing the natural and historic environment. The NPPF requires local assessments to be made of sport, recreation and open space, and key policies for both provision and protection of facilities and spaces, and key paragraphs include:
  - Paragraph 70: positive planning for the provision and use of shared space including community facilities and sports venues to enhance the sustainability of communities and residential environments.
  - Paragraph 73: justification of provision needs to be set out within up to date assessments.
  - Paragraph 74: the protection of existing open space, sports and recreational buildings including playing fields, with specific policy exceptions.
  - Paragraph 156: setting the strategic priorities for *“the provision of health, security, community and cultural infrastructure and other local facilities”*.
  - Paragraph 178: the duty for authorities to co-operate on planning issues that cross administrative boundaries, including sport and recreation.

### National Planning Practice Guidance

4. National Planning Practice Guidance (NPPG) is a suite of guidance information which is regularly updated, added to and amended. This information is designed to support the interpretation of the NPPF policies. The most important guidance documents for the open space, sport and recreation strategies are summarised below.

## Open space, sports and recreation facilities

5. This guidance (Dept for Communities and Local Government, 2014) reconfirms the need for up to date assessments of sport, recreation and open space as a requirement to justify developers' obligations. It specifically refers to the duty of local authorities to cooperate where open spaces serve a wider area. The open space, sport and recreation strategies meet the requirement for up to date assessments and cooperation across the boundaries of the authorities.
6. It refers to the use of Sport England Guidance on how to assess the need for sports and recreation facilities and also the requirement of local planning authorities to consult Sport England about developments affecting playing fields, and a recommendation to do so where there are other changes planned to the network of sports facilities. The strategies use the appropriate Sport England Guidance, Assessing Needs and Opportunities for built facilities, and Playing Pitch Guidance for pitches.
7. The note also provides guidance for the designation of Local Green Space both in Local Plans and in Neighbourhood Plans. Such green spaces need to be in public ownership but may or may not have public access, and are not therefore specifically addressed as a category in the open spaces report.

## Health and wellbeing

8. The Health and Wellbeing guidance (Dept for Communities and Local Government, 2014) recognises the importance of planning to the quality of the built and natural environments, which are a major determinant of health and wellbeing. This link is fundamental to the NPPF and is the main driver for the open space, sport and recreation strategy work. The guidance draws this out in relation to the issues that could be considered through the plan-making processes, and which are a key consideration for the strategy recommendations:
  - development proposals can support strong, vibrant and healthy communities and help create healthy living environments which should, where possible, include making physical activity easy to do and create places and spaces to meet to support community engagement and social capital;
  - the local plan promotes health, social and cultural wellbeing and supports the reduction of health inequalities;
  - the local plan considers the local health and wellbeing strategy and other relevant health improvement strategies in the area;
  - opportunities for healthy lifestyles have been considered (e.g. planning for an environment that supports people of all ages in making healthy choices, helps to promote active travel and physical activity, and promotes access to healthier food, high quality open spaces, green infrastructure and opportunities for play, sport and recreation);
  - access to the whole community by all sections of the community, whether able-bodied or disabled, has been promoted.

## NATIONAL FRAMEWORK FOR SPORT AND PHYSICAL ACTIVITY

9. The national sports strategy from Government and the responding Sport England national strategy provides high level justification for the emerging recommendations and the identification of priorities within each of the strategies. A major theme across all of the national guidance is the objective of getting more people more active, and encouraging an active lifestyle from the earliest ages, in large part to improve the health and wellbeing of the communities.

### H M Government Sporting Future: A New Strategy for an Active Nation

10. This wide-ranging detailed strategy (Dept for Culture, Media & Sport, 2015) was launched in December 2015 with the aim to change the way in which sport is considered, from simply how many people take part, to what people get out of participating and what more can be done to encourage everyone to have a physically active lifestyle.
11. The funding decisions of Government will now be made on the basis of the social good that sport and physical activity can deliver, not simply the number of participants. The five key outcomes which will define success in sport are:
  - physical well-being
  - mental well-being
  - individual development
  - social and community development
  - economic development.
12. The primary funding will be focussing on those people who tend not to take part in sport including women and girls, disabled people, those in lower socio-economic groups and older people. All new government funding will go to organisations which can deliver some or all of the five outcomes, and those organisations which show that they can work collaboratively and tailor their work at the local level will be the most likely to receive funding.
13. The strategy broadens Sport England's remit so that it becomes responsible for sport outside of school from the age of 5 rather than 14.
14. Policy will support the value of broader engagement in sport, through volunteering, spectating, or the general feel-good factor associated with sporting success. Government has reaffirmed its commitment to Olympic and Paralympic success but also extending support to non-Olympic sports particularly with grassroots investment.
15. The Government's strategy recognises that local government are the biggest public sector investor in sport and physical activity, spending over £1bn per year excluding capital spend. Councils have an important leadership role in forging partnerships, unlocking barriers to participation and improving the local sport delivery system, and

local authorities are seen as crucial in delivering sport and physical activity opportunities. As such many councils have integrated physical activity into public health policy with the objective of promoting wellbeing, and have produced Health and Wellbeing Strategies.

16. In relation to open spaces, the strategy states:

*“Being close to where people live, high quality multi-use local green spaces can play a key role as sporting venues and as alternative settings for sport and healthy activity for communities including new audiences that are less likely to use traditional sports centres. The opportunities to realise the multiple benefits that can be achieved for communities by investing in green spaces and routes as venues for sport and healthy activity should be considered whenever they arise.”*

17. The strategy specifically states that support for sport and physical activity infrastructure is not restricted to pitches, sports halls and buildings. In future it should include all types of places where people take part in activity in both rural and urban environments. Providing people with the freedom to use existing facilities and spaces and keeping them in good repair, is seen as important as building new infrastructure.
18. The Government strategy is seeking new ways of supporting local physical activity strategies in selected geographical areas, and expects Sport England, Public Health England and Health and Wellbeing Boards to work closely together on pilot projects. Collaborative and innovative approaches are also being encouraged at the very local level involving organisations such as housing associations and the police, and Lottery funding policies will be changed to more easily support such projects.

### Sport England: towards an active nation, strategy 2016-2021

19. Sport England launched its new five year national strategy in 2016 (Sport England, 2016). It responds to the Government’s Sporting Future strategy, and as such has a stronger focus on reaching those who are least active, and helping to deliver the wider Government’s strategy’s outcomes. The key changes that Sport England are making to the way that they work are:
- Focusing more money and resources on tackling inactivity.
  - Investing more in children and young people from the age of five.
  - Helping those who are active now to carry on, but at lower cost to the public purse over time.
  - Putting customers at the heart of what they do, responding to how people organise their lives and helping the sector to be more welcoming and inclusive, especially of those groups currently under-represented in sport.
  - Helping sport to keep pace with the digital expectations of customers.
  - Working nationally where it makes sense to do so (for example on infrastructure and workforce) but encouraging stronger local collaboration to deliver a more joined-up experience of sport and activity for customers.



- Working with a wider range of partners, including the private sector, using their expertise as well as Sport England investment to help others align their resources.
  - Working with our sector to encourage innovation and share best practice particularly through applying the principles and practical learning of behaviour change.
20. The investment programmes by Sport England reflect the policy direction set down in the Government strategy Sporting Future. There is also a Community Asset Fund to support local infrastructure and Sport England will continue to support the football facility investment strategy developed in association with the Football Association, the Premier League and the Football Foundation.
21. The use of existing facilities will be encouraged, particularly the use of schools through the *Use our School* guidance document.
22. Sport England national guidance for the production of strategies has been used for the relevant report sections:
- Built facilities: Assessing Needs and Opportunities (Sport England, 2014)
  - Playing pitches: (Sport England, 2013).

## Local planning policies

23. The local planning policies identify the location and extent of the housing growth across Harborough along with other overarching policies, such as transport and provision of employment land. The area specific plans and policies provide detailed information about very local issues and proposals.
24. These policies have been taken into account within the assessment of the strategies, and in the emerging recommendations.

## Harborough New Local Plan (Under Preparation)

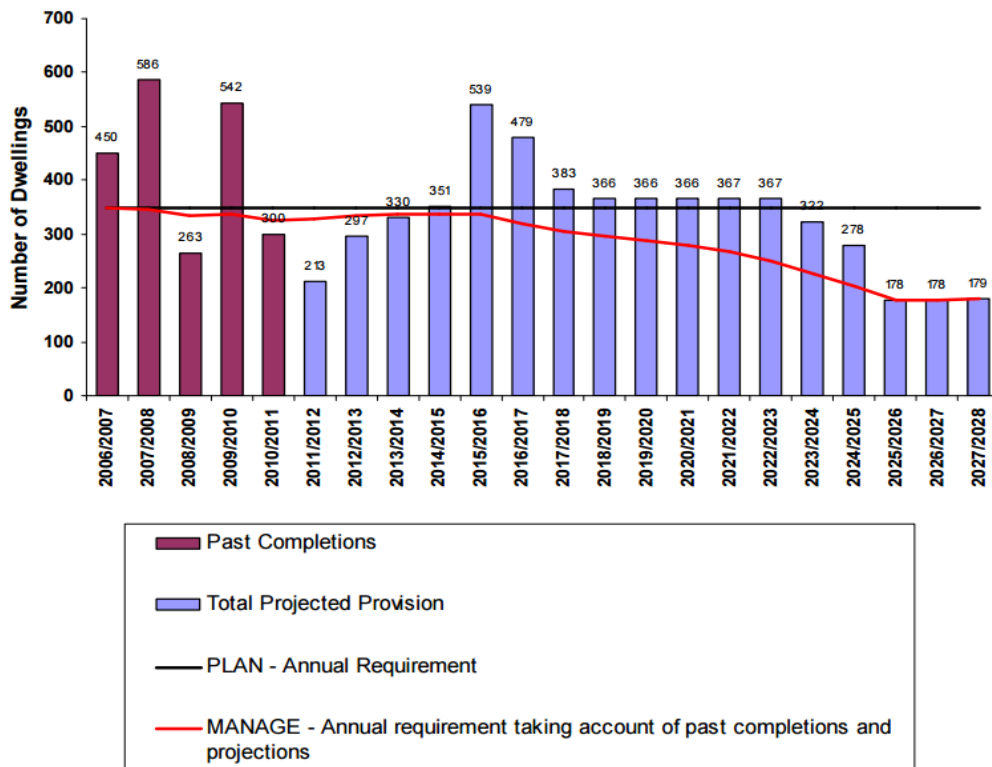
- 25.
26. The pre-submission version is expected to be published in September 2017, leading to adoption in September 2018.
27. The amount and location of new housing in this plan, together with extant allocations in the Core Strategy are outlined below. The Strategic Development Areas proposed in the emerging plan have been incorporated into the considerations in the Playing Pitch Strategy.

## Core Strategy (2006 -2028)

28. The Core Strategy (CS) was adopted in November 2011 and sets out the long-term vision and objectives for Harborough up to 2031. Policies with some relevance to this Playing Pitch Strategy include:
29. **Policy CS1** sets out the spatial strategy for Harborough which is to:
  - Maintain the District's unique rural character whilst ensuring that the needs of the community are met through sustainable growth and suitable access to services;
  - Enable the development of at least 7,700 dwellings across the District during the period 2006- 2028, including:
    - Market Harborough at least 3,300 dwellings;
    - Leicester PUA (Scraftoft, Thurnby and Bushby) at least 880 dwellings;
    - Lutterworth at least 700 dwellings;
    - Broughton Astley at least 400 dwellings;
    - Rural Centres and selected rural villages at least 2,420 dwellings.
30. The role of key centres includes:
  - A strategic development area immediately to the north west of Market Harborough, to meet the strategic requirement for new dwellings, and to provide access to new employment, educational and recreational opportunities;

- Develop Lutterworth and Broughton Astley as Key Centres, to provide additional housing, employment, retail, leisure and community facilities to serve each settlement and its catchment area;
- Develop the communities of Kibworth, Fleckney, Great Glen, Billesdon, Ullesthorpe and Husbands Bosworth as Rural Centres as a focus for rural housing, additional employment, retail and community uses to serve each settlement and its catchment area.

31. Table 3 of the Core Strategy gave the housing trajectory to 2028 (as at March 2011):



32. The relevant strategic Objectives of the Core Strategy are:

- *CS Objective 3:* To locate new development in sustainable locations that respect environmental capacity and which have appropriate infrastructure, services and facilities in place or where these can realistically be provided; and to encourage the appropriate re-use of brownfield sites in sustainable locations.
- *CS Objective 4:* To protect, enhance and, where appropriate, secure the provision of additional accessible community services, facilities, open spaces and infrastructure throughout the District.

33. **Policy CS2** sets out the housing land requirement and distribution.

34. **Policy CS5** advises that the majority of future development will be located in areas well served by local services to reduce the need to travel, where people can gain convenient

access to public transport services for longer journeys and where local journeys may be undertaken on foot or by bicycle.

35. **Policy CS8** seeks to secure a high quality, accessible and multi-functional green infrastructure network across both rural and urban areas of Harborough district which contributes to healthy lifestyles and a rich, diverse natural environment. Under Policy CS8 “Open Space, Sport and Recreation Assets” it states:

*The contribution that open space, sport and recreation facilities make to the District’s Green Infrastructure network and the well-being of communities will be strengthened by:*

- *Protecting and, where possible, enhancing existing open spaces and sport and recreational facilities of value (or sites of poor quality and unused with potential value), encouraging multiple uses and improvements to their quality;*
- *Allowing re-location of poorly located but necessary open space or sport and recreation facilities;*
- *Requiring developers to make provision for adequate open space in association with new development in accordance with the relevant standards contained in the District Council’s document ‘Provision of Open Space, Sport and Recreation’;*
- *Ensuring that networks of multi-functional green infrastructure which provide a wide range of environmental and quality of life benefits, are designed into all major development schemes from the outset;*
- *Securing new provision to help address identified deficiencies in existing open space provision, including cemeteries and burial grounds, both in quantity and quality; and*
- *Promoting linkages between new development and surrounding recreational networks including Rights of Way, communities and facilities.*

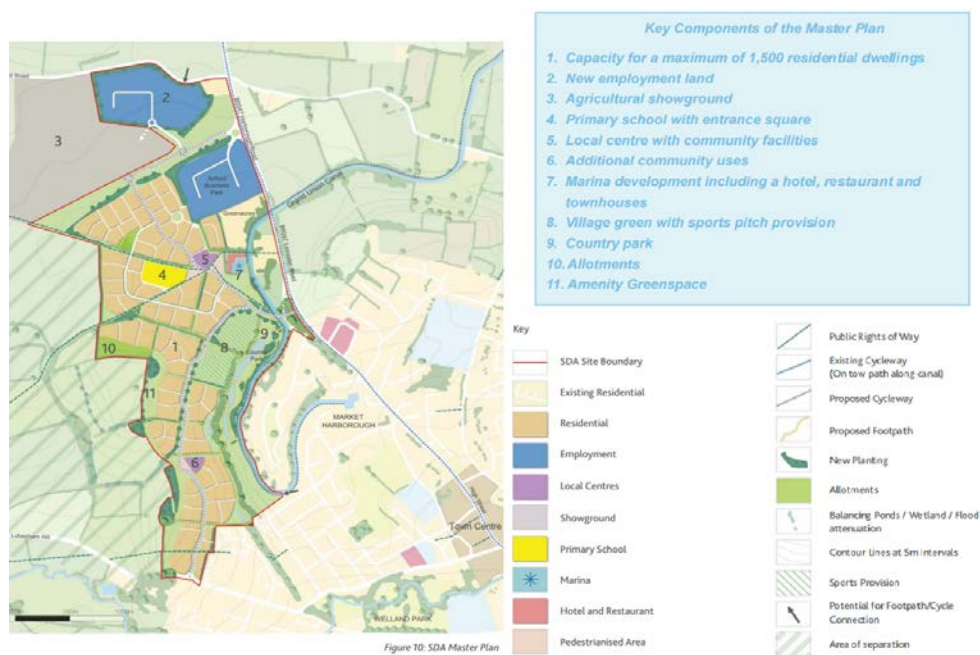
36. Policy CS8 goes on to explain under “Open Space, Recreation and Sports Provision”.

- The strategy supports the basic principle behind ‘PPG 17: Planning for Open Space, Sport and Recreation’ that open spaces, sport and recreation are important in enhancing residents’ quality of life. In line with advice contained within PPG 17, a local assessment of open space needs and opportunities along with an audit of existing provision was carried out in 2004. The ‘Open Space/Sport and Recreational Facilities and Assessment of Local Needs’ and subsequent work has identified deficiencies in sports provision within the district.
- Having assessed the quantity, quality and accessibility of existing and future needs, the study went on to recommend provision standards in relation to open space. These standards formed the basis for the Council’s ‘Provision for Open Space, Sport and Recreation’ 2009 which sets out clearly what developers of residential schemes need to contribute towards the provision and enhancement of any public open space in the District. In relation to sports facilities the ‘Leicestershire and Rutland Sports Facilities Strategic Framework

Final Report – July 2009’ identifies that Harborough has both a current and future shortfall in swimming pool provision, a predicted shortfall in sports hall provision by 2026 and, due to the strong club base, a need for investment in new athletics training facilities in Market Harborough.

- Building on evidence provided by the above documents, the policy seeks to ensure that the provision of quality open space, recreation and sports facilities in relation to new development contributes to reducing identified deficiencies across the District

37. A masterplan for the NW Market Harborough SDA (1,500 dwellings) identifies a village green/recreation ground in the centre of the SDA master plan (reference 8 in the plan below). This is due to be delivered in Phase 1 and the area covers approximately 6.6ha **and has capacity to provide several pitches including a cricket pitch**. Like other community uses, the green is well served by footpaths and cycleways. A community hall is required which could provide sports changing facilities. It may therefore be appropriate to locate this on part of the playing field land or it may be provided as part of the primary school campus.



## Planning Obligations Developer Guidance Note (2016)

38. The Planning Obligations Supplementary Planning Document (SPD) was adopted September 2016 and published January 2017. It sets out the range of infrastructure, services and facilities that the Council will normally seek to secure via planning obligations in relation to development proposals within the District.
39. Playing pitches are covered under “Outdoor sport facilities”.
40. There are two supporting documents associated with this SPD:
  - Provision for Open Space, Sport and Recreation 2015 which provides details of the arrangements for assessing contributions to open space; and
  - Assessment of Local Community Provision and Developer Contributions (October 2010) which provides additional evidence to support the case for developer contributions to local indoor community and sports facilities.
41. The SPD states that proposed development will be assessed against the existing levels of provision within the accessibility thresholds contained in the document ‘Provision for Open Space Sport and Recreation 2015’ in order to determine the need for additional provision.
42. The document ‘Provision for Open Space Sport and Recreation 2015’ provides information on local standards for open space provision following an assessment of recreational provision in accordance with the provisions of the NPPF. It contains an approach to determining the level of contributions towards open space, sport and recreation facilities that will be sought from developers applying for new residential development where needed to make development acceptable. The level of contributions will be periodically reviewed to ensure that they are accurate and will be calculated for each development from a detailed assessment of the range of existing open space in the area. This will give confidence to developers that they are not being asked to contribute towards open space typologies where there is an existing oversupply.
43. The SPD notes that a Playing Pitch Strategy is to be prepared in 2016/7 to also inform future requirements (this strategy).

## Community Infrastructure Levy

44. Progress on the CIL is currently on hold whilst national policy is clarified. The implications on this for the playing pitch strategy are that development contributions will be sought through planning conditions including s106.

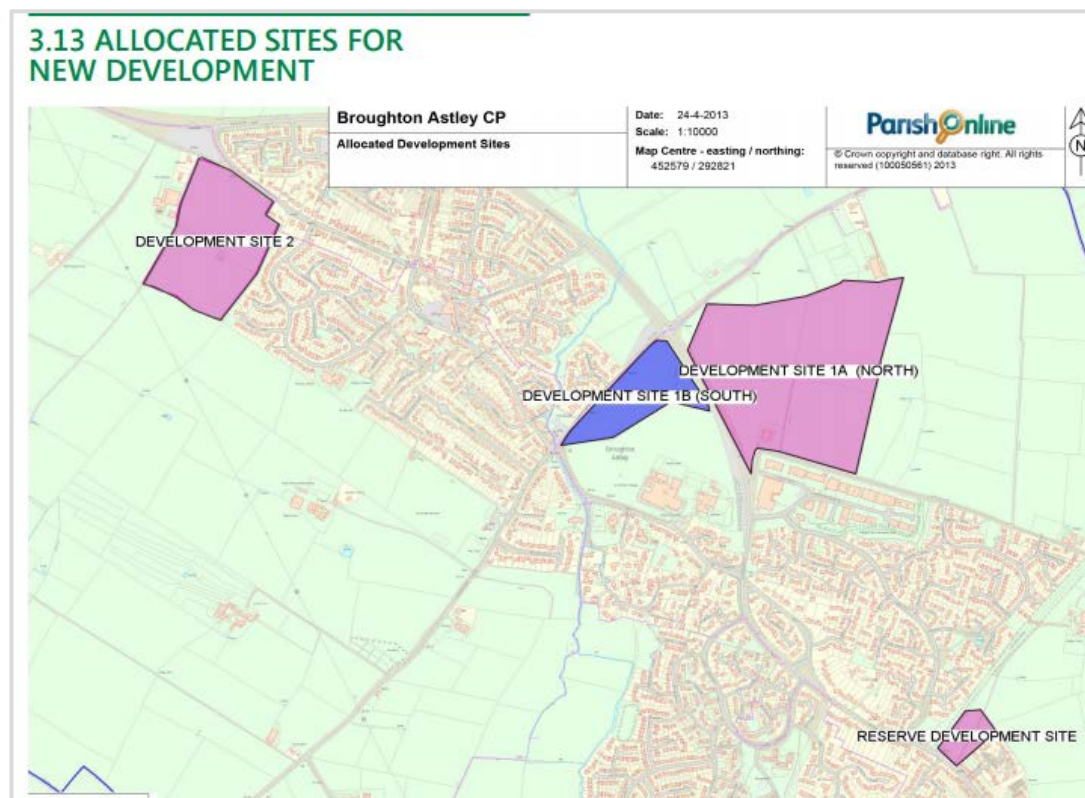
## Neighbourhood Plans

45. The following Neighbourhood Plans have been adopted ('made up'), or are in progress.

### Broughton Astley

46. The key issues from the consultation include:
- The lack of both formal and informal leisure facilities within the village, resulting in the need to travel elsewhere to access facilities;
  - Access to facilities is the biggest barrier to improving wellbeing;
  - The lack of facilities and opportunities for young people within the village;
  - Need for more outdoor and indoor leisure facilities in a central location;
  - Leisure centre should include a swimming pool;
  - Newer housing development with more young families at one end of the village; remote from the village centre; and
  - Need for more facilities and services for the ageing population.
47. OBJECTIVE: TO PROVIDE A NEW, CENTRALLY LOCATED COMMUNITY AND LEISURE FACILITY POLICY L1 – IMPROVED LEISURE FACILITIES
48. Site 1B (south of Broughton Way) is allocated for the provision of additional community and leisure facilities. The second and third choice sites suggested during the Big Plan consultation will be considered if the allocated site is not granted permission to proceed (Ref: 3.15.1).
49. Site 1B is allocated for a centrally located community and leisure facility which will provide a minimum 4-court sports hall, gym and dance facilities, **all-weather pitch**, changing facilities, meeting rooms and associated administration and parking facilities for the benefit of all the community.
50. The community and leisure facilities will be provided by the developer of Site 1B, as part of the overall development package for the combined sites. Any additional funding required to enhance the facilities or specification will be sought from the District and County Councils, and sports funding bodies, so that the facility is built in a timely manner.
51. It is expected to be operated on a similar model as Harborough and Lutterworth Leisure Centres; and achieved by working in partnership with District & County Councils, Leicestershire and Rutland Sport, and the Harborough District Leisure Trust and others as necessary.
52. The Parish Council will seek to purchase additional land in order to increase the number of formal sports pitches and changing rooms to meet the needs of local clubs and groups.

53. The justification is that Harborough District Council's Assessment of Local Community Provision and Developer contributions (2010) identified that as a Key Rural Centre of around 10,000 Broughton Astley should be provided with a minimum of a new four court hall and land to meet current and new growth. The Leisure and Recreational Needs Survey (2011) indicated that 89.8% of those who responded considered that Broughton Astley would benefit from more leisure facilities and 57.4 % cited the lack of nearby facilities was the biggest barrier to exercise.
54. Three potential sites were identified as suitable for the construction of community and leisure facilities during the Big Plan consultation process. The most suitable and preferred site being identified as land adjacent to Thomas Estley Community College, to enable joint use of facilities. The Big Plan for Broughton Astley Survey (2012) identified that 64.7% of those responding considered that the land adjacent to Thomas Estley Community College would be the most suitable site for new Community Leisure facilities.



55. **OBJECTIVE: FOR NEW DEVELOPMENT TO CONTRIBUTE TO THE IMPROVEMENT OF INFRASTRUCTURE AND FACILITIES IN BROUGHTON ASTLEY AS APPROPRIATE POLICY STATEMENT CI1. – CONTRIBUTIONS TO NEW INFRASTRUCTURE AND FACILITIES**
- i. Financial contributions will be required, as appropriate, from each developer to mitigate the impact of the development on essential infrastructure such as public utilities, libraries, policing, waste services and the highways network.



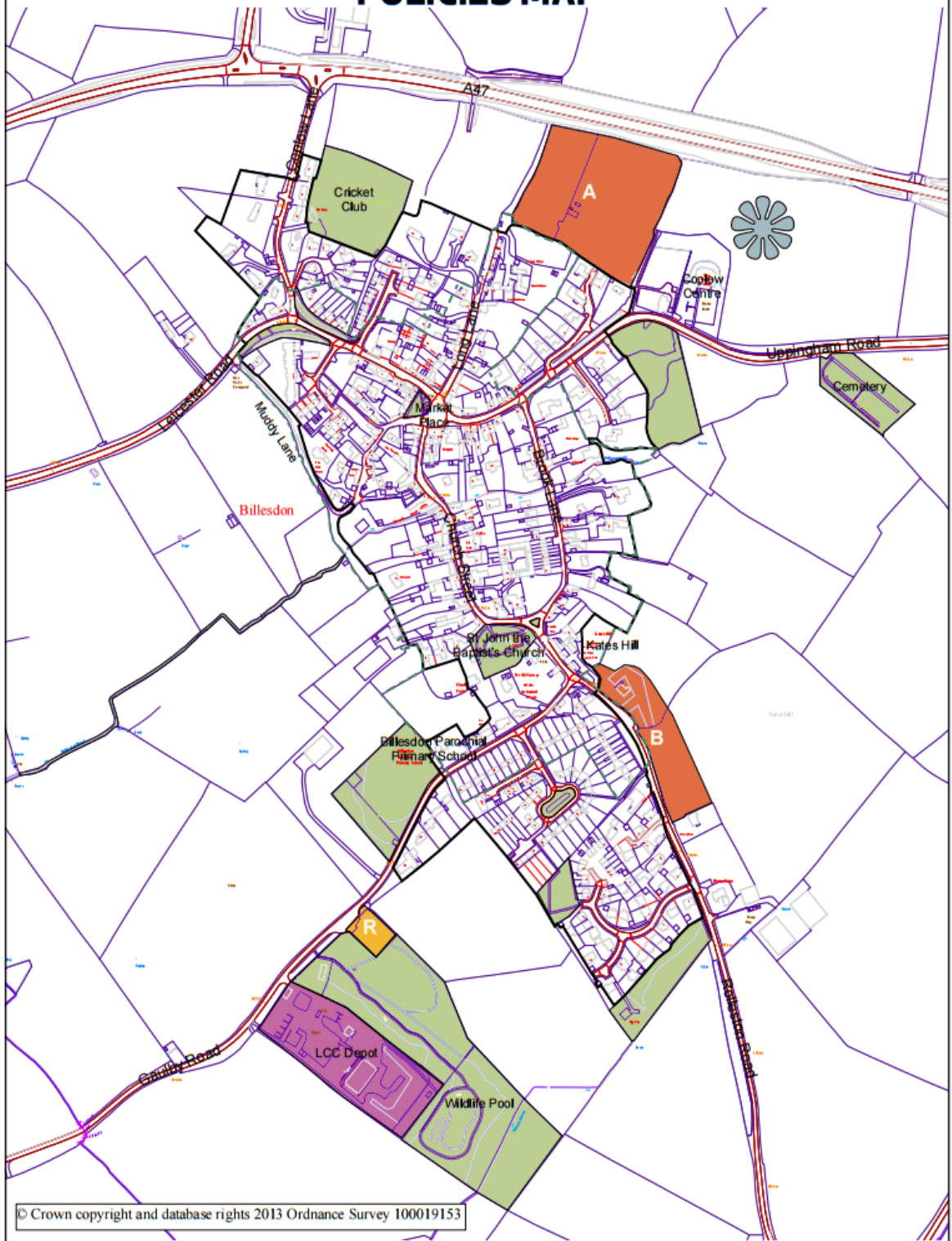
- ii. Financial contributions will be required, as appropriate, from each developer to fund additional healthcare, education and leisure services within the village in accordance with the obligations detailed in the Harborough District 'Provision for Open Space, Sport and Recreation 2009 (or subsequent revisions).
- iii. Community priorities in terms of additional local facilities to be provided as a result of new development are:
  - a. A centrally located community building suitable for use as a Medical Centre with associated parking spaces;
  - b. A centrally located community leisure facility providing a minimum 4-court sports hall, gym and dance facilities, all weather-pitch changing rooms, storage, meeting rooms and associated administration and parking facilities;
  - c. A centrally located community building with associated storage and parking spaces suitable for use by organised youth groups;
  - d. A centrally located multi-use synthetic sports pitch suitable for both community and schools use;
  - e. Two adult size Football Pitches with associated parking, changing and storage facilities;
  - f. The construction on an informal BMX / Cycle Track facility with associated shelter and parking facilities.
- iv. The construction of a swimming pool for joint community and schools use will be investigated and provided if financially viable.

56. The Assessment of Local Community Provision and Developer Contribution commissioned by Harborough District Council identified that Broughton Astley is a key rural centre of immense size which has no existing sports facilities, and this gap has been identified as a key priority for future delivery from all stakeholders. The overall recommendation was to provide a four court hall that will serve existing and new growth proposed at Broughton Astley and free up some space at the village hall. The Leisure and Recreational Needs Survey (2011) indicated that 89% of responders believed that Broughton Astley would benefit from increased leisure and recreational facilities; with 55% of those who suggested additional facilities stating a swimming pool is required. The Big Plan Survey (2012) demonstrated that 22% of those responding considered a Swimming Pool is required in Broughton Astley.

57. The proposed phasing for the delivery of the recreational facilities is:








Site 1: In Phase 2	Leisure Centre	2019-2029
In Phase 3	Recreational Facilities	2019-2022
Site 2: In Phase 1	Recreational Space	2014-2017

# POLICIES MAP



© Crown copyright and database rights 2013 Ordnance Survey 100019153

**Key**

- |                                                                                     |                                            |                                                                                     |                                              |
|-------------------------------------------------------------------------------------|--------------------------------------------|-------------------------------------------------------------------------------------|----------------------------------------------|
|  | Limits to Development (Policies BP2 & BP6) |  | Housing Allocation (Policies BP3, BP4 & BP5) |
|  | Conservation Area                          |  | Reserve Housing Allocation (Policy BP3)      |
|  | Local Green Space (Policy BP19)            |  | Employment Allocation (Policy BP10)          |
|                                                                                     |                                            |  | Community Playing Field (Policy BP13)        |



### Billesdon Neighbourhood Plan

58. Key issues include recreational facilities where the Parish has a significant number of young people, many of whom are, or will become, teenagers during the life-time of the Neighbourhood Development Plan. The Community recognises that there are insufficient leisure time facilities in the Parish for these young people.
59. Although the Primary School has a sports field, it is not open to use by the Community. There is a thriving Cricket Club in the village, with several teams that play in local leagues at senior and junior levels. The cricket pitch is on Coplow Lane and the clubhouse, with planning permission for enlargement, provides social facilities for the members. There is also a small Play Area on Gaulby Road for young children, managed by the Parish Council.
60. There is **no public playing field** – a serious deficiency for a Rural Centre. There is good community support for the provision of a public playing field for the recreation and healthy living of residents of all ages, but particularly young people. The provision of a playing field would enable children, young people and adults to engage in informal physical activity and encourage the development of competitive team sports. Ideally, a new playing field should be located adjacent to the Coplow Centre (see Policies Map), which is already the focus for most community leisure activity.
61. POLICY BP13: INFRASTRUCTURE New development will be supported by the provision of new or improved infrastructure as set out in policies BP4, BP5, BP9, BP10 and BP14, together with financial contributions as appropriate for the following off-site infrastructure requirements ... including ... a community playing field to be located near to The Coplow Centre.

### Foxton Neighbourhood Plan

62. Policy F18: Retention of Key Services and Facilities

*Proposals that ensure the retention and improvement of key local facilities will be supported. Any redevelopment will only be supported if the facility affected is replaced by an equivalent or better provision in an equally suitable location. These facilities (as at 2016) are: primary school, pubs, village hall, church, allotments, recreation ground and shop.*

### Scraptoft Neighbourhood Plan

63. The Made plan covers 2015-2028.
64. Key issues include that local people want to see better community, recreation and children's play facilities.
65. Policy S14 includes the need for improvement, remodelling or enhancement of sports and recreation provision in Scraptoft including the provision of allotments.

### Hungarton Neighbourhood Plan

66. This plan was adopted in June 2017.
67. Playground, tennis court and Millennium Green These facilities lie at the bottom end of the village close to the Village Hall on land leased from the Quenby Trust. They are managed by the charitable Sports Club Committee and the Millennium Green Trust. The tennis court, which doubles as a 5 a side football pitch and basketball area are well used by residents and visitors. ... To promote the on-going prosperity of the Parish it is essential that Hungarton retains its remaining community facilities and amenities and continues to provide local services that will sustain the vitality of the community and encourage local spending. The importance of the existing facilities and amenities were highlighted in the consultation events that have taken place across the Parish through the preparation of this Neighbourhood Plan.

### Great Easton Neighbourhood Plan

68. This plan covers the parish of Great Easton as well as the neighbouring Bringhurst Primary School. It covers the period 2017 to 2031.
69. Point 3 of the vision in the neighbourhood plan is ‘...retaining and enhancing the character and appeal of the existing conservation area and unique assets of the Parish, including footpaths, jitties, open green spaces and community and recreational facilities.’
70. Also that, ‘The open spaces within our village are protected from development, to protect the village identity and retain the rural nature of its surroundings.’
71. Policy NHE 1 protects a number of local green spaces within the plan area, none of which have playing pitches on. Community Action NHE 1 seeks to protect other important open spaces within the plan area which do contain sites designated as playing fields.
72. Section 12 of the plan relates to Community Facilities and Amenities and Policy CF1 aims to protect these. Policy CF2 promotes the provision of new community facilities.
73. A key thread throughout the plan is to maintain and develop new opportunities for younger people through play and recreation.

### Great Glen Neighbourhood Plan

74. The Great Glen Neighbourhood Plan was adopted in November 2017. It runs for the period 2011 to 2031.
75. The protection of important environmental spaces and safeguarding community facilities were highlighted as key issues in the consultation process. The designation of

local green spaces and the protection of important buildings and open spaces of local importance were all key requirements of the plan. These needed to be protected so as to protect the village identity and to retain the rural nature of its surroundings.

76. Policy GG12: Public Open Space aims to protect open spaces within the plan area which include playing fields.

**POLICY GG12: PUBLIC OPEN SPACE**

*The Parish Council will actively work with the District Council and other stakeholders to bring the ratio of 'area of public open space to population size' in Great Glen closer to recognised standards.*

*Development proposals that result in the loss of, or have a significant adverse effect on, the following areas of public open space (figure 6) will not be supported, unless the public open space is replaced by an equivalent or better provision in an equally suitable location or it can be demonstrated to the Parish Council that the public open space or is no longer required by the community:*

*Bridgewater Drive amenity green space      Great Glen Recreation Ground  
Great Glen play area      St Cuthbert's Churchyard      Cromwell Road play area  
Memorial Green      St Cuthbert's C of E School playing field.*

*Housing development proposals of five or more dwellings will be required to include adequate green space provision based on current district standards as an integral part of that development. Alternatively, if an existing open space is located within reasonable walking distance, then a commuted sum may be accepted for the enhancement of that area.*

77. Community Action 5 of the plan relates to requesting developer contributions from housing developments for a number of items but particularly to improvements to public open space.

**The Kibworths Neighbourhood Plan**

78. This neighbourhood plan is for the parishes of Kibworth Beauchamp and Kibworth Harcourt. It was adopted in November 2017 and covers the period 2017 to 2031.
79. The plan pays particular importance to the community facilities in the area. Golf, cricket, football, tennis and bowls and parks and open spaces are all seen as important amenities. As are play areas and youth facilities.

80. Policy CSA 4: Sporting Facilities aims to protect and enhance the facilities:

**POLICY CSA 4: SPORTING FACILITIES**

The provision of new and/or improved sporting facilities which are accessible to all age groups and disabilities will be supported subject to the facility:

- 1) Being within or adjacent to the Limits to Development;
- 2) Meeting the design requirements in Policy H7;
- 3) Not resulting in unacceptable traffic movements, noise, fumes, smell or other disturbance to residential properties;
- 4) Will include adequate parking provision;
- 5) Being of a scale appropriate to the needs of the locality and is accessible for residents wishing to walk or cycle.
- 6) Providing sporting amenities which are open to all residents.

81. Policy CSA6: Parks and Green Spaces aims to safeguard parks, sports and recreation grounds as follows:

**POLICY CSA6: PARKS AND GREEN SPACES**

The following parks, sports and recreation grounds shown on the Proposals Map will be safeguarded:

Jubilee Green, Warwick Road, Rookery Close, Larkwood, Smeeton Road, Kibworth Cricket Club ground, Football field (off Fleckney Road)

Development proposals on these areas will not be supported except where:

- 1) A replacement of an equivalent typology is provided, as defined by the most recent Open Space, Sport and Recreational Facilities Study, in an appropriate location serving the local community; or
- 2) It is demonstrated that there is a surplus of recreational land, facilities or open space of the same typology exceeding the needs of the local community; or
- 3) The development of a small part of a larger site in recreational use would result in the enhancement of recreational facilities on the remainder of the site, or on a nearby site serving the same community.
- 4) The provision of new formal parks will be supported, especially those including provision of child and 12-16 year old activity.

82. Policy ENV1: Protection of Local Green Spaces designates three sites as local green spaces to protect them from development. The plan acknowledges that there are some deficits in open spaces when compared to the standards in the HDC open spaces strategy and would like to redress some of this in the future.
83. The plan identifies that developer contributions will be sought from developments for community, sport and open spaces.

### Lubenham Neighbourhood Plan

84. The Lubenham Neighbourhood Plan covers the entire parish of Lubenham and runs for the period 2016-2031.
85. The parish has a good network of open spaces and leisure areas which include the large village green, the Green Gardens, Playing Field, War Memorial and allotments as well as the school playing field. Map 9 in the plan shows the location of the local green space, open space, sport and recreation sites.
86. One of the key themes for the plan is to protect Lubenham's open spaces, natural environment biodiversity and access to the countryside.
87. Policy LNP14 aims to protect and enhance the natural environment in the parish with providing, '...multifunctional areas of greenspace, providing for recreation...'

### North Kilworth Neighbourhood Plan

88. This plan covers the period 2015 to 2031 and was adopted in June 2017.
89. The plan focuses on a number of priorities which include the designation of local green spaces and protection of important community assets, local buildings and open spaces.
90. The Environment theme specifically seeks to ensure that, 'the most important open spaces and views within North Kilworth are protected from development, to protect the village identity and to retain the rural nature of its surroundings.'
91. Policy NK2: Housing Provision seeks to ensure new open space is provided within Reserve Site 2.
92. Policy NK10 supports the provision of new or improved community facilities.
93. Policy NK12: Protection of Local Green Spaces identifies the open space sites to be protected from development. These include a number of playing field sites.

### Other Neighbourhood Plans at Examination Stage

94. There are three other neighbourhood plans at the examination stage: East Langton, Great Bowden and Houghton on the Hill.

### Designated Neighbourhood Plan Areas

95. Arnesby, Bitteswell, Burton Overy, Fleckney, Gilmorton, Hallaton, High Leicestershire, Husbands Bosworth and Leire have all designated their neighbourhood plan areas but are still working up their plans.

### APPENDIX 3: FOOTBALL CLUBS AND TEAMS

Team	Main Ground	Team Category	Team Age Group	Team Gender
Borough Alliance Junior U10 Foxes	Symingtons Recreation Ground	7v7	U10	Mixed
Borough Alliance Junior U11 Eagles	Symingtons Recreation Ground	9v9	U11	Mixed
Borough Alliance Junior U12 Hawks	Symingtons Recreation Ground	9v9	U12	Mixed
Borough Alliance Junior U13 Falcons	Symingtons Recreation Ground	11v11 Youth	U13	Male
Borough Alliance Junior U14 Wolves	Symingtons Recreation Ground	11v11 Youth	U14	Male
Borough Alliance Junior U16 Pumas	Symingtons Recreation Ground	11v11 Youth	U16	Male
Borough Alliance Junior U8 Cobras	Symingtons Recreation Ground	5v5	U8	Mixed
Borough Alliance Junior U8 Panthers	Symingtons Recreation Ground	5v5	U8	Mixed
Borough Alliance Junior U8 Wildcats	Symingtons Recreation Ground	5v5	U8	Mixed
Borough Alliance Junior U9 Sharks	Symingtons Recreation Ground	7v7	U9	Mixed
Brooke House College Football Academy U19	Northampton Road Sports Ground, MH	11v11	U19	Male
Brooke House College Football Academy U19 Reserves	Northampton Road Sports Ground, MH	11v11	U19	Male
Brooke House College Football Academy U19 Thirds	Northampton Road Sports Ground, MH	11v11	U19	Male
Broughton Astley United U15 (11v11)	Thomas Estley Community College	11v11 Youth	U15	Male
Dunton & Broughton Rangers Juniors U10	Thomas Estley Community College	7v7	U10	Mixed
Dunton & Broughton Rangers Juniors U11	Thomas Estley Community College	9v9	U11	Mixed
Dunton & Broughton Rangers Juniors U12	Thomas Estley Community College	9v9	U12	Male
Dunton & Broughton Rangers Juniors U13 Lions	Thomas Estley Community College	11v11 Youth	U13	Male
Dunton & Broughton Rangers Juniors U13 Tigers	Frolesworth Road - Recreation Ground, BA	11v11 Youth	U13	Male
Dunton & Broughton Rangers Juniors U14 Tigers	Thomas Estley Community College	11v11 Youth	U14	Male
Dunton & Broughton Rangers Juniors U16	Football Ground - Dunton Bassett	11v11 Youth	U16	Male
Dunton & Broughton Rangers Juniors U17 Juniors	Football Ground - Dunton Bassett	11v11 Youth	U17	Male
Dunton & Broughton Rangers Juniors U7	Thomas Estley Community College	5v5	U7	Mixed
Dunton & Broughton Rangers Juniors U8 Jaguars	Thomas Estley Community College	5v5	U8	Mixed
Dunton & Broughton Rangers Juniors U8 Pumas	Thomas Estley Community College	5v5	U8	Mixed
Dunton & Broughton Rangers Juniors U9 Lions	Thomas Estley Community College	7v7	U9	Mixed
Dunton & Broughton Rangers Juniors U9 Panthers	Thomas Estley Community College	7v7	U9	Mixed
Dunton & Broughton United First	Football Ground - Dunton Bassett	11v11	Open Aged	Male
Dunton & Broughton United First (Sunday)	Football Ground - Dunton Bassett	11v11	Open Aged	Male
Dunton & Broughton United Reserves	Football Ground - Dunton Bassett	11v11	Open Aged	Male
Dunton and Broughton Senior team	Frolesworth Road - Recreation Ground, BA	11v11	Open Aged	Male
Dunton and Broughton Senior team	Sapcote Playing Fields			Male
Dunton and Broughton Senior team	Sapcote Playing Fields			Male
Dunton & Broughton United Veterans	Frolesworth Road - Recreation Ground, BA	11v11	Veterans	Male
FC Cherry Tree First	Northampton Road Sports Ground, MH	11v11	Open Aged	Male
Fleckney Athletic First	Leicester Road, Recereation Ground - Fleckney	11v11	Open Aged	Male
Fleckney Athletic Junior U10 Tigers	Leicester Road, Recereation Ground - Fleckney	7v7	U10	Mixed
Fleckney Athletic Junior U11 Athletic	Leicester Road, Recereation Ground - Fleckney	9v9	U11	Mixed
Fleckney Athletic Junior U11 Falcons	Leicester Road, Recereation Ground - Fleckney	9v9	U11	Mixed
Fleckney Athletic Junior U12	Leicester Road, Recereation Ground - Fleckney	9v9	U12	Mixed
Fleckney Athletic Junior U12	Leicester Road, Recereation Ground - Fleckney	9v9	U12	Mixed
Fleckney Athletic Junior U13	Lodge Road Sports Facilities - Fleckney	11v11 Youth	U13	Male
Fleckney Athletic Junior U14 Athletic	Lodge Road Sports Facilities - Fleckney	11v11 Youth	U14	Male
Fleckney Athletic Junior U14 Foxes	Lodge Road Sports Facilities - Fleckney	11v11 Youth	U14	Male
Fleckney Athletic Junior U15	Leicester Road, Recereation Ground - Fleckney	11v11 Youth	U15	Male
Fleckney Athletic Junior U15	Leicester Road, Recereation Ground - Fleckney	11v11 Youth	U15	Male
Fleckney Athletic Junior U16	Leicester Road, Recereation Ground - Fleckney	11v11 Youth	U16	Male
Fleckney Athletic Junior U17	Leicester Road, Recereation Ground - Fleckney	11v11 Youth	U17	Male
Fleckney Athletic Junior U18	Leicester Road, Recereation Ground - Fleckney	11v11 Youth	U18	Male
Fleckney Athletic Junior U7 Rock	Leicester Road, Recereation Ground - Fleckney	5v5	U7	Mixed
Fleckney Athletic Junior U7 Roll	Leicester Road, Recereation Ground - Fleckney	5v5	U7	Mixed
Fleckney Athletic Junior U8	Leicester Road, Recereation Ground - Fleckney	5v5	U8	Mixed
Fleckney Athletic Junior U9 Imperials	Leicester Road, Recereation Ground - Fleckney	7v7	U9	Mixed
Fleckney Athletic Junior U9 Rebels	Leicester Road, Recereation Ground - Fleckney	7v7	U9	Mixed
Fleckney Masters Veterans	Leicester Road, Recereation Ground - Fleckney	11v11	Veterans	Male
Frolesworth United First	Gilmorton Playing Fields	11v11	Open Aged	Male
Gilmorton Juniors U18	Gilmorton Playing Fields	11v11 Youth	U18	Male
Glen Villa First	Great Glen Recreation Ground	11v11	Open Aged	Male
Glen Villa Reserves	Great Glen Recreation Ground	11v11	Open Aged	Male
Glen Villa Juniors U10	Great Glen Recreation Ground	7v7	U10	Mixed
Glen Villa Juniors U11	Great Glen Recreation Ground	9v9	U11	Mixed
Glen Villa Juniors U8	Great Glen Recreation Ground	5v5	U8	Male
Glen Villa Juniors U9	Great Glen Recreation Ground	7v7	U9	Male
Harborough Town FC First	Northampton Road Sports Ground, MH	11v11	Open Aged	Male
Harborough Town FC Reserves	Northampton Road Sports Ground, MH	11v11	Open Aged	Male
Harborough Town FC Veterans	Northampton Road Sports Ground, MH	11v11	Veterans	Male
Harborough Town Juniors Hornets (Walking Football)	Northampton Road Sports Ground, MH	5v5	Open Aged	Male
Harborough Town Juniors U10 Rangers	Northampton Road Sports Ground, MH	7v7	U10	Mixed
Harborough Town Juniors U10 Rovers	Northampton Road Sports Ground, MH	7v7	U10	Mixed
Harborough Town Juniors U10 Royals	Northampton Road Sports Ground, MH	7v7	U10	Mixed
Harborough Town Juniors U11	Northampton Road Sports Ground, MH	9v9	U11	Male
Harborough Town Juniors U11 2012	Northampton Road Sports Ground, MH	9v9	U11	Male
Harborough Town Juniors U11 2016	Northampton Road Sports Ground, MH	9v9	U11	Male
Harborough Town Juniors U11 94s	Northampton Road Sports Ground, MH	9v9	U11	Male
Harborough Town Juniors U11 Girls	Northampton Road Sports Ground, MH	7v7	U11	Female
Harborough Town Juniors U12	Northampton Road Sports Ground, MH	9v9	U12	Male
Harborough Town Juniors U12 2012	Northampton Road Sports Ground, MH	9v9	U12	Male
Harborough Town Juniors U12 '94	Northampton Road Sports Ground, MH	9v9	U12	Male
Harborough Town Juniors U12 Girls	Northampton Road Sports Ground, MH	7v7	U12	Female
Harborough Town Juniors U13	Northampton Road Sports Ground, MH	11v11 Youth	U13	Male
Harborough Town Juniors U13 2012s	Northampton Road Sports Ground, MH	11v11 Youth	U13	Male
Harborough Town Juniors U13 94s	Northampton Road Sports Ground, MH	11v11 Youth	U13	Male
Harborough Town Juniors U13 Girls	Northampton Road Sports Ground, MH	9v9	U13	Female
Harborough Town Juniors U14	Northampton Road Sports Ground, MH	11v11 Youth	U14	Male
Harborough Town Juniors U14 2012	Northampton Road Sports Ground, MH	11v11 Youth	U14	Male
Harborough Town Juniors U15	Northampton Road Sports Ground, MH	11v11 Youth	U15	Male
Harborough Town Juniors U15 2012	Northampton Road Sports Ground, MH	11v11 Youth	U15	Male



Harborough Town Juniors U15 '94	Northampton Road Sports Ground, MH	11v11 Youth	U15	Male
Harborough Town Juniors U15 Girls	Northampton Road Sports Ground, MH	11v11 Youth	U15	Female
Harborough Town Juniors U16	Northampton Road Sports Ground, MH	11v11 Youth	U16	Male
Harborough Town Juniors U16 2016	Northampton Road Sports Ground, MH	11v11 Youth	U16	Male
Harborough Town Juniors U17s	Northampton Road Sports Ground, MH	11v11 Youth	U17	Male
Harborough Town Juniors U18s Girls	Northampton Road Sports Ground, MH	11v11 Youth	U18	Male
Harborough Town Juniors U18	Northampton Road Sports Ground, MH	11v11 Youth	U18	Male
Harborough Town Juniors U18 (Midweek)	Northampton Road Sports Ground, MH	11v11 Youth	U18	Male
Harborough Town Juniors U7 HTFC Rookies 6's Development	Northampton Road Sports Ground, MH	5v5	U7	Mixed
Harborough Town Juniors U7 HTFC Rookies Development	Northampton Road Sports Ground, MH	5v5	U7	Mixed
Harborough Town Juniors Development U7s	Northampton Road Sports Ground, MH	5v5	U8	Mixed
Harborough Town Juniors U7 Rovers	Northampton Road Sports Ground, MH	5v5	U7	Mixed
Harborough Town Juniors U7 Royals	Northampton Road Sports Ground, MH	5v5	U7	Mixed
Harborough Town Juniors U7's Rangers	Northampton Road Sports Ground, MH	5v5	U7	Mixed
Harborough Town Juniors U8 Rangers	Northampton Road Sports Ground, MH	5v5	U8	Mixed
Harborough Town Juniors U8 Rovers	Northampton Road Sports Ground, MH	5v5	U8	Mixed
Harborough Town Juniors U8 Royals	Northampton Road Sports Ground, MH	5v5	U8	Mixed
Harborough Town Juniors U8's Rockets	Northampton Road Sports Ground, MH	5v5	U8	Mixed
Harborough Town Juniors U8s	Northampton Road Sports Ground, MH	5v5	U9	Mixed
Harborough Town Juniors U9 Rangers	Northampton Road Sports Ground, MH	7v7	U9	Mixed
Harborough Town Juniors U9 Rovers	Northampton Road Sports Ground, MH	7v7	U9	Mixed
Harborough Town Juniors U9 Royals	Northampton Road Sports Ground, MH	7v7	U9	Mixed
senior team	Houghton on the Hill Playing Field	11v11	Open Aged	Male
Houghton Rangers Junior U11	Houghton on the Hill Playing Field	9v9	U11	Male
Houghton Rangers Junior U12	Houghton on the Hill Playing Field	9v9	U12	Male
Houghton Rangers Junior U13	Houghton on the Hill Playing Field	11v11 Youth	U13	Male
Houghton Rangers Junior U18	Exported To Leicester	11v11 Youth	U18	Male
Houghton Rangers Junior U16	Houghton on the Hill Playing Field	11v11 Youth	U16	Male
Houghton Rangers Junior U8 Houghton Rangers	Houghton on the Hill Playing Field	5v5	U8	Male
Houghton Rangers Junior U9	Houghton on the Hill Playing Field	7v7	U9	Mixed
Kibworth & Smeeton Juniors U10 Hawks	Kibworth Football Pitches, Fleckney Road	7v7	U10	Male
Kibworth & Smeeton Juniors U10 Kestrels	Kibworth Football Pitches, Fleckney Road	5v5	U10	Mixed
Kibworth & Smeeton Juniors U11 Eagles	Kibworth Football Pitches, Fleckney Road	9v9	U11	Male
Kibworth and Smeeton Juniors U11s Girls	Kibworth Football Pitches, Fleckney Road	9v9	U11	Female
Kibworth & Smeeton Juniors U12 Panthers	Kibworth Football Pitches, Fleckney Road	9v9	U12	Male
Kibworth & Smeeton Juniors U13 Kings	Kibworth Football Pitches, Fleckney Road	11v11 Youth	U13	Male
Kibworth & Smeeton Juniors U18	Kibworth Football Pitches, Fleckney Road	11v11 Youth	U18	Male
Kibworth & Smeeton Juniors U7 Tigers	Kibworth Football Pitches, Fleckney Road	5v5	U7	Male
Kibworth & Smeeton Juniors U8 Kickers	Kibworth Football Pitches, Fleckney Road	5v5	U8	Male
Kibworth & Smeeton Juniors U9 Eagles	Kibworth Football Pitches, Fleckney Road	7v7	U9	Male
Kibworth & Smeeton Juniors U9 Swifts	Kibworth Football Pitches, Fleckney Road	7v7	U9	Male
Kibworth Town First	Kibworth Football Pitches, Fleckney Road	11v11	Open Aged	Male
Kibworth Town Vets	Kibworth Football Pitches, Fleckney Road	11v11	Open Aged	Male
Kibworth Town U16s	Kibworth Football Pitches, Fleckney Road	11v11	Open Aged	Male
Little Bowden First	Northampton Road Sports Ground, MH	11v11	Open Aged	Male
Lutterworth Athletic Development	Lutterworth Football Academy	11v11	Open Aged	Male
Lutterworth Athletic First	Lutterworth Football Academy	11v11	Open Aged	Male
Lutterworth Athletic Reserves	Lutterworth Football Academy	11v11	Open Aged	Male
Lutterworth Athletic U18 Academy	Lutterworth Football Academy	11v11 Youth	U18	Male
Lutterworth Athletic U18 Youth	Lutterworth Football Academy	11v11 Youth	U18	Male
Lutterworth Athletic Veterans	Lutterworth Football Academy	11v11	Veterans	Male
Lutterworth Athletic Youth U10 Cyclone	Lutterworth Football Academy	7v7	U10	Mixed
Lutterworth Athletic Youth U11 Lightning	Lutterworth Football Academy	9v9	U11	Mixed
Lutterworth Athletic Youth U11 Thunder	Lutterworth Football Academy	9v9	U11	Mixed
Lutterworth Athletic Youth U12 Cyclone	Lutterworth Football Academy	9v9	U12	Mixed
Lutterworth Athletic Youth U13 Tornado	Lutterworth Football Academy	11v11 Youth	U13	Male
Lutterworth Athletic Youth U14 Hurricanes	Lutterworth Football Academy	11v11 Youth	U14	Male
Lutterworth Athletic Youth U14 Tempest	Lutterworth Football Academy	11v11 Youth	U14	Male
Lutterworth Athletic Youth U15 Lightning	Lutterworth Football Academy	11v11 Youth	U15	Male
Lutterworth Athletic Youth U7 Lightning	Lutterworth Football Academy	5v5	U7	Male
Lutterworth Athletic Youth U8 Thunder	Lutterworth Football Academy	5v5	U8	Male
Lutterworth Athletic Youth U8 Whirlwind	Lutterworth Football Academy	5v5	U8	Male
Lutterworth Athletic Youth U9 Blizzard	Lutterworth Football Academy	7v7	U9	Mixed
Lutterworth Athletic Youth U9 Storm	Lutterworth Football Academy	7v7	U9	Mixed
Lutterworth Athletic Youth U9 Tornado	Lutterworth Football Academy	7v7	U9	Mixed
Lutterworth Club First	Lutterworth Football Academy	11v11	Open Aged	Male
Lutterworth Town First	Dunley Way Sports Facilities - Lutterworth	11v11	Open Aged	Male
Lutterworth Town Reserves	Dunley Way Sports Facilities - Lutterworth	11v11	Open Aged	Male
Lutterworth Town Juniors U16	Dunley Way Sports Facilities - Lutterworth	11v11 Youth	U16	Male
Lutterworth Town Juniors U17 Lutterworth Town	Dunley Way Sports Facilities - Lutterworth	11v11 Youth	U17	Male
Medbourne First	Sportsground - Medbourne	11v11	Open Aged	Male
Medbourne Reserves	Sportsground - Medbourne	11v11	Open Aged	Male
Medbourne Junior U14	Sportsground - Medbourne	11v11 Youth	U14	Male
Medbourne Junior U16	Sportsground - Medbourne	11v11 Youth	U16	Male
Medbourne Junior U17	Sportsground - Medbourne	11v11 Youth	U17	Male
Medbourne Junior U18	Sportsground - Medbourne	11v11 Youth	U18	Male
Medbourne Junior U7	Sportsground - Medbourne	5v5	U7	Male
Medbourne Junior U9	Sportsground - Medbourne	7v7	U9	Mixed
North Kilworth Junior & Youth U10 Thunder	Playing Field, Leys Crescent - South Kilworth	7v7	U10	Mixed
North Kilworth Junior & Youth U13 Cobras	Playing Field, Leys Crescent - South Kilworth	11v11 Youth	U13	Mixed
North Kilworth Junior & Youth U13 Vipers	Playing Field, Leys Crescent - South Kilworth	11v11 Youth	U13	Mixed
North Kilworth Junior & Youth U17 Youth	Sports Field in North Kilworth	11v11 Youth	U17	Male
North Kilworth Junior & Youth U8	Playing Field, Leys Crescent - South Kilworth	5v5	U7	Mixed
North Kilworth Junior & Youth U8 Eagles	Playing Field, Leys Crescent - South Kilworth	5v5	U8	Mixed
North Kilworth Junior & Youth U9 Storm	Sports Field in North Kilworth	7v7	U9	Mixed
North Kilworth Junior & Youth U9 Tornado	Playing Field, Leys Crescent - South Kilworth	7v7	U9	Mixed
North Kilworth Sports First	Sports Field in North Kilworth	11v11	Open Aged	Male
River Swift First	Dunley Way Fields	11v11	Open Aged	Male
Royalist First	Northampton Road Sports Ground, MH	11v11	Open Aged	Male
The Plough Inn Bruntingthorpe First	Home Field - Buntingthorpe	11v11	Open Aged	Male
Ullesthorpe First	Ullesthorpe Playing Field	11v11	Open Aged	Male

## APPENDIX 4: FA GROUND GRADING REQUIREMENTS

### Ground facility requirements for Steps 6/G and 7

Step/ Grade	Min Capacity	Pitch Barrier	Technical area	Floodlights	Turnstiles	Spectator Accommodation	Press seating	Toilets within ground	Players Changing	Match Officials Changing
7	No minimum and no boundary fencing required	Post and rope around all sides that accommodate spectators. Minimum of 1.83m (ideally 2m) away from touchline and if hard standing exists (not compulsory) it should be minimum of 0.9 metres width.	Not essential but its desirable that a technical area exists within the laws of the game	Not compulsory	Not required, however where one exists it must be fixed and fully operational	No specific requirements for accommodation	None Required	Provision should be made for adequate toilet facilities	Existing must be 12m2, with 4 shower heads and adequate toilets for players. New build 18m2.	Minimum 4m2,1 shower and access to toilets (not necessarily inside the changing room). New build 6m2.  Provision for both male and female officials required.
Entry to Step 6/ H	No minimum, but ground must be enclosed with fencing 1.83m high	1.1m high and 1.83 m away from touchline (ideally 2m). Hard standing width of 0.9m on spectator side of barrier on a minimum of 2 adjacent sides from the entrance.	Same side of pitch, ideally 3m apart and seat 8 people or 4m in length	Average lux of 120 for existing or 180 lux must be provided for new	1 required or a pay box.	Can be on 1 side only. 50 minimum covered. No allocation required for Directors	None Required	2 WC's should be required	Existing must be 12m2, with 4 shower heads, 1 wash hand basin, 1 WC. New build 18m2.	Minimum 4m2,1 shower, 1 WC (exclusive use but not necessarily en suite)and 1 wash hand basin. New build 6m2.  Provision for both male and female officials required.
6/ G	No minimum, but ground must be enclosed with fencing 1.83m high	1.1m high and 1.83 m away from touchline (ideally 2m). Hard standing width of 0.9m on spectator side of barrier on a minimum of 2 sides on adjacent sides from the entrance.	Same side of pitch, ideally 3m apart and seat 8 people or 4m in length	Average lux of 120 for existing or 180 lux must be provided for new	1 required or a pay box.	Can be on 1 side but preferably 2 sides. 100 minimum covered of which 50 must be seated and located in one stand. No allocation required for Directors	None Required	Male: 2 urinals or equivalent and 1 WC. Female: 2WC's	Existing must be 12m2, with 4 shower heads, 1 wash hand basin, 1 WC. New build 18m2.	Minimum 4m2,1 shower, 1 WC and 1 wash hand basin. New build 6m2.  Provision for both male and female officials required.

## Women's Ground Grading

<b><u>STEP</u></b>	<b><u>COMPETITION</u></b>	<b><u>GRADING CATEGORY</u></b>
<b>Step 1</b>	FA Women's Premier League – National Division	Grade A
<b>Step 2</b>	FA Women's Premier League – Northern & Southern Divisions	Grade A
<b>Step 3</b>	Women's Combination Leagues	Grade B
<b>Step 4</b>	Women's Regional Leagues – Premier Divisions	Grade C
<b>Step 5</b>	Women's Regional Leagues – First Divisions	N/A
<b>Step 6</b>	County Women's Leagues	N/A

**THE FOOTBALL ASSOCIATION**

**WOMEN'S PYRAMID OF FOOTBALL GROUND GRADING DOCUMENT**

**SUMMARY INFORMATION**

<b><u>Category</u></b>	<b><u>Grade</u></b>	<b><u>A</u></b>	<b><u>B</u></b>	<b><u>C</u></b>
Security required		1 year tenure agreement	1 year tenure agreement	N/A
Club House		Yes	Yes	N/A
Car Parking		Yes	Yes	N/A
Pitch Perimeter Barrier		Yes	Permanent barrier or roped off	Permanent barrier or roped off
Playing Area		100m x 64m (110ydsx70yds)	100m x 64m (110yds x 70yds)	100m x 64m (110ydsx70yds)
Technical Area – trainers' boxes		Yes – 8 Seats	Yes – 8 Seats	N/A
Floodlighting		Yes	N/A	N/A
Public Address System		Yes	N/A	N/A
Entrances – turnstiles (minimum)		1 turnstiles	N/A	N/A
Covered Accommodation		100	N/A	N/A
Dressing Rooms Players		Separate dressing rooms and showers	Separate dressing rooms and showers	Separate dressing rooms & adequate washing facilities
Dressing Rooms – match officials		Separate dressing room	Separate dressing room	Separate dressing room

# APPENDIX 5: FA MODEL - IMPACT OF 3G PITCHES FOR MATCHES

Middle Sub Area: 1 x full size 3G

## SCENARIO TESTING - 3G PITCHES

The greatest sum within the green boxes shows how many AGP's are required to service all affiliated football within the LA.

Format of the game	Total number of teams	Number of teams playing at peak time	Fixture Equivalents	Matches per full size AGP	Number of match sessions	Duration of session (inc. changeover)	Hours of play on 3G AGP	Assumptions
5v5	24	22	11	4	2.7	1	2.7	Assumes that 5v5 and 7v7 fixtures are programmed on the hour
7v7	23	21	11	2	5.3	1	5.3	
9v9	17	16	8	2	4.1	1.5	6.1	Assumes that 9v9 fixtures are programmed every 90 minutes to allow for 60 mins game, 15 mins half time and 15 mins changeover
Youth 11v11	36	33	16	1	16.4	2	32.8	Assumes that 11v11 fixtures are programmed every 120 minutes
Adult 11v11	24	16	8	1	8	2	16	
<b>Total</b>	<b>124</b>	<b>108</b>	<b>54</b>		<b>36</b>	<b>8</b>	<b>272</b>	<b>Hours of play required on 3G AGP per weekend</b>

### Mini Soccer

2	Number of programme hours available (e.g. Saturday 9am - 11am)
5.4	Number of 3G AGPs required to accommodate all mini fixtures within same time band
1	Current supply of 3G AGPs - Registered or with the ability to become Registered (and used for fixtures)
<b>4.4</b>	Additional 3G pitches required to accommodate all mini fixtures within the same time band

### Youth 9v9

2	Number of programme hours available (Sat 11am-1 pm)
3.1	Number of 3G AGPs required to accommodate all 9v9 fixtures within same time band
1	Current supply of 3G AGPs - Registered or with the ability to become Registered (and used for fixtures)
<b>2.1</b>	Additional 3G pitches required to accommodate all youth 9v9 fixtures within the same time band

### Youth 11v11

4	Number of programme hours available (Sunday 9am - 1 pm)
8.2	Number of 3G AGPs required to accommodate all youth 11v11 fixtures within same time band
1	Current supply of 3G AGPs - Registered or with the ability to become Registered (and used for mini fixtures)
<b>7.2</b>	Additional 3G pitches required to accommodate all youth 11v11 fixtures within the same time band

### Adult 11v11 Saturday

3	Number of programme hours available (Saturday 1 pm-4pm)
5.2	Number of 3G AGPs required to accommodate all adult 11v11 fixtures within same time band
1	Current supply of 3G AGPs - Registered or with the ability to become Registered (and used for fixtures)
<b>4.2</b>	Additional 3G pitches required to accommodate all youth 11v11 fixtures within the same time band

## Middle Sub Area: 2 x full size 3G

### SCENARIO TESTING - 3G PITCHES

The greatest sum within the green boxes shows how many AGP's are required to service all affiliated football within the LA.

Format of the game	Total number of teams	Number of teams playing at peak time	Fixture Equivalents	Matches per full size AGP	Number of match sessions	Duration of session (inc. changeover)	Hours of play on 3G AGP	Assumptions
5v5	24	22	11	4	2.7	1	2.7	Assumes that 5v5 and 7v7 fixtures are programmed on the hour
7v7	23	21	11	2	5.3	1	5.3	
9v9	17	16	8	2	4.1	1.5	6.1	Assumes that 9v9 fixtures are programmed every 90 minutes to allow for 60 mins game, 15 mins half time and 15 mins changeover
Youth 11v11	36	33	16	1	16.4	2	32.8	Assumes that 11v11 fixtures are programmed every 120 minutes
Adult 11v11	24	16	8	1	8	2	16	
Total	124	108	54		36	8	272	Hours of play required on 3G AGP per weekend

#### Mini Soccer

2	Number of programme hours available (e.g. Saturday 9am - 11am)
5.4	Number of 3G AGPs required to accommodate all mini fixtures within same time band
2	Current supply of 3G AGPs - Registered or with the ability to become Registered (and used for fixtures)
3.4	Additional 3G pitches required to accommodate all mini fixtures within the same time band

#### Youth 9v9

2	Number of programme hours available (Sat 11am-1 pm)
3.1	Number of 3G AGPs required to accommodate all 9v9 fixtures within same time band
2	Current supply of 3G AGPs - Registered or with the ability to become Registered (and used for fixtures)
1.1	Additional 3G pitches required to accommodate all youth 9v9 fixtures within the same time band

#### Youth 11v11

4	Number of programme hours available (Sunday 9am - 1 pm)
8.2	Number of 3G AGPs required to accommodate all youth 11v11 fixtures within same time band
2	Current supply of 3G AGPs - Registered or with the ability to become Registered (and used for mini fixtures)
6.2	Additional 3G pitches required to accommodate all youth 11v11 fixtures within the same time band

#### Adult 11v11 Saturday

3	Number of programme hours available (Saturday 1 pm-4pm)
5.2	Number of 3G AGPs required to accommodate all adult 11v11 fixtures within same time band
2	Current supply of 3G AGPs - Registered or with the ability to become Registered (and used for fixtures)
3.2	Additional 3G pitches required to accommodate all youth 11v11 fixtures within the same time band

## West Sub Area: 1 x full size 3G

### SCENARIO TESTING - 3G PITCHES

The greatest sum within the green boxes shows how many AGP's are required to service all affiliated football within the LA.

Format of the game	Total number of teams	Number of teams playing at peak time	Fixture Equivalents	Matches per full size AGP	Number of match sessions	Duration of session (inc. changeover)	Hours of play on 3G AGP	Assumptions
5v5	15	14	7	4	1.7	1	1.7	Assumes that 5v5 and 7v7 fixtures are programmed on the hour
7v7	15	14	7	2	3.5	1	3.5	
9v9	11	11	5	2	2.6	1.5	4.0	Assumes that 9v9 fixtures are programmed every 90 minutes to allow for 60 mins game, 15 mins half time and 15 mins changeover
Youth 11v11	25	23	11	1	11.4	2	22.8	Assumes that 11v11 fixtures are programmed every 120 minutes
Adult 11v11	15	10	5	1	5	2	10	
<b>Total</b>	<b>81</b>	<b>71</b>	<b>35</b>		<b>24</b>	<b>8</b>	<b>180</b>	<b>Hours of play required on 3G AGP per weekend</b>

#### Mini Soccer

2	Number of programme hours available (e.g. Saturday 9am - 11am)
3.4	Number of 3G AGPs required to accommodate all mini fixtures within same time band
1	Current supply of 3G AGPs - Registered or with the ability to become Registered (and used for fixtures)
2.4	Additional 3G pitches required to accommodate all mini fixtures within the same time band

#### Youth 9v9

2	Number of programme hours available (Sat 11am-1 pm)
2.0	Number of 3G AGPs required to accommodate all 9v9 fixtures within same time band
1	Current supply of 3G AGPs - Registered or with the ability to become Registered (and used for fixtures)
1.0	Additional 3G pitches required to accommodate all youth 9v9 fixtures within the same time band

#### Youth 11v11

4	Number of programme hours available (Sunday 9am - 1 pm)
5.7	Number of 3G AGPs required to accommodate all youth 11v11 fixtures within same time band
1	Current supply of 3G AGPs - Registered or with the ability to become Registered (and used for mini fixtures)
4.7	Additional 3G pitches required to accommodate all youth 11v11 fixtures within the same time band

#### Adult 11v11 Saturday

3	Number of programme hours available (Saturday 1 pm-4pm)
3.3	Number of 3G AGPs required to accommodate all adult 11v11 fixtures within same time band
1	Current supply of 3G AGPs - Registered or with the ability to become Registered (and used for fixtures)
2.3	Additional 3G pitches required to accommodate all youth 11v11 fixtures within the same time band

## East Sub Area: 1 x full size 3G

### SCENARIO TESTING - 3G PITCHES

The greatest sum within the green boxes shows how many AGP's are required to service all affiliated football within the LA.

Format of the game	Total number of teams	Number of teams playing at peak time	Fixture Equivalents	Matches per full size AGP	Number of match sessions	Duration of session (inc. changeover)	Hours of play on 3G AGP	Assumptions
5v5	13	12	6	4	1.5	1	1.5	Assumes that 5v5 and 7v7 fixtures are programmed on the hour
7v7	13	12	6	2	3.0	1	3.0	
9v9	8	8	4	2	1.9	1.5	2.9	Assumes that 9v9 fixtures are programmed every 90 minutes to allow for 60 mins game, 15 mins half time and 15 mins changeover
Youth 11v11	21	19	10	1	9.6	2	19.1	Assumes that 11v11 fixtures are programmed every 120 minutes
Adult 11v11	13	8	4	1	4	2	8	
<b>Total</b>	<b>68</b>	<b>59</b>	<b>30</b>		<b>20</b>	<b>8</b>	<b>151</b>	<b>Hours of play required on 3G AGP per weekend</b>

#### Mini Soccer

2	Number of programme hours available (e.g. Saturday 9am - 11am)
3.0	Number of 3G AGPs required to accommodate all mini fixtures within same time band
1	Current supply of 3G AGPs - Registered or with the ability to become Registered (and used for fixtures)
<b>2.0</b>	Additional 3G pitches required to accommodate all mini fixtures within the same time band

#### Youth 9v9

2	Number of programme hours available (Sat 11am-1 pm)
1.4	Number of 3G AGPs required to accommodate all 9v9 fixtures within same time band
1	Current supply of 3G AGPs - Registered or with the ability to become Registered (and used for fixtures)
<b>0.4</b>	Additional 3G pitches required to accommodate all youth 9v9 fixtures within the same time band

#### Youth 11v11

4	Number of programme hours available (Sunday 9am - 1 pm)
4.8	Number of 3G AGPs required to accommodate all youth 11v11 fixtures within same time band
1	Current supply of 3G AGPs - Registered or with the ability to become Registered (and used for mini fixtures)
<b>3.8</b>	Additional 3G pitches required to accommodate all youth 11v11 fixtures within the same time band

#### Adult 11v11 Saturday

3	Number of programme hours available (Saturday 1 pm-4pm)
2.8	Number of 3G AGPs required to accommodate all adult 11v11 fixtures within same time band
1	Current supply of 3G AGPs - Registered or with the ability to become Registered (and used for fixtures)
<b>1.8</b>	Additional 3G pitches required to accommodate all youth 11v11 fixtures within the same time band



## APPENDIX 6: CRICKET CLUBS AND TEAMS

Full Team Name	Home Ground 1 address	Home Ground 1 postcode
Billesdon 1st XI	Coplow Lane, Billesdon, Leicester, Leicestershire	LE7 9AD
Billesdon 2nd XI	Coplow Lane, Billesdon, Leicester, Leicestershire	LE7 9AD
Billesdon Midweek XI	Coplow Lane, Billesdon, Leicester, Leicestershire	LE7 9AD
Billesdon Sunday Development XI	Coplow Lane, Billesdon, Leicester, Leicestershire	LE7 9AD
Billesdon Under 13	Coplow Lane, Billesdon, Leicester, Leicestershire	LE7 9AD
Bitteswell 1st XI	Bitteswell Cricket Grouind, Ullesthorpe Road, Bitteswell, Leicestershire	LE17 5BJ
Bitteswell 2nd XI	Bitteswell Cricket Grouind, Ullesthorpe Road, Bitteswell, Leicestershire	LE17 5BJ
Bowden 1st XI	The Recreation Ground, Station Road, Great Bowden, Market Harborough, Leicestershire	LE16 7HN
Bowden 2nd XI	The Recreation Ground, Station Road, Great Bowden, Market Harborough, Leicestershire	LE16 7HN
Bowden Friendly XI	The Recreation Ground, Station Road, Great Bowden, Market Harborough, Leicestershire	LE16 7HN
Bowden Under 15	The Recreation Ground, Station Road, Great Bowden, Market Harborough, Leicestershire	LE16 7HN
Bowden Under 13	The Recreation Ground, Station Road, Great Bowden, Market Harborough, Leicestershire	LE16 7HN
Bowden Under 13B	The Recreation Ground, Station Road, Great Bowden, Market Harborough, Leicestershire	LE16 7HN
Bowden Under 11	The Recreation Ground, Station Road, Great Bowden, Market Harborough, Leicestershire	LE16 7HN
Bowden Under 11A	The Recreation Ground, Station Road, Great Bowden, Market Harborough, Leicestershire	LE16 7HN
Broughton Astley 1st XI	The Rec, Frolesworth Road, Broughton Astley, Leicester, Leicestershire	LE9 6PE
Broughton Astley 2nd XI	The Rec, Frolesworth Road, Broughton Astley, Leicester, Leicestershire	LE9 6PE
Dunton Bassett 1st XI	Dunton Bassett Cricket Club, Lutterworth Road, Dunton Bassett, Leicestershire	
Dunton Bassett 2nd XI	Dunton Bassett Cricket Club, Lutterworth Road, Dunton Bassett, Leicestershire	
Dunton Bassett Sunday XI	Dunton Bassett Cricket Club, Lutterworth Road, Dunton Bassett, Leicestershire	
Fleckney Village 1st XI	Fleckney Recreation Ground, Leicester Road, Fleckney, Leicestershire	LE8 8BG
Fleckney Village 2nd XI	Fleckney Recreation Ground, Leicester Road, Fleckney, Leicestershire	LE8 8BG
Fleckney Village Midweek XI	Fleckney Recreation Ground, Leicester Road, Fleckney, Leicestershire	LE8 8BG
Fleckney Village Friendly XI	Fleckney Recreation Ground, Leicester Road, Fleckney, Leicestershire	LE8 8BG
Gilmorton Village 1st XI	Gilmorton Playing Fields, Kimcote Road, Gilmorton, Leicestershire	LE17 5PL
Great Glen 1st XI	The Recreation Ground, Bindleys Lane, Great Glen, Leicestershire	LE8 9FA
Great Glen 2nd XI	The Recreation Ground, Bindleys Lane, Great Glen, Leicestershire	LE8 9FA
Great Glen Sunday XI	The Recreation Ground, Bindleys Lane, Great Glen, Leicestershire	LE8 9FA
Great Glen Midweek XI	The Recreation Ground, Bindleys Lane, Great Glen, Leicestershire	LE8 9FA
Great Glen Under 15	The Recreation Ground, Bindleys Lane, Great Glen, Leicestershire	LE8 9FA
Great Glen Under 11	The Recreation Ground, Bindleys Lane, Great Glen, Leicestershire	LE8 9FA
Great Glen Under 10	The Recreation Ground, Bindleys Lane, Great Glen, Leicestershire	LE8 9FA
Gumley Saturday XI	Gumley Cricket Field, Laughton Road, Gumley, Leicestershire	LE16 7RT
Gumley Sunday XI	Gumley Cricket Field, Laughton Road, Gumley, Leicestershire	LE16 7RT
Houghton & Thurnby 1st XI	Wadkins Way, Bushby, Leicester, Leicestershire	LE7 9NA
Houghton & Thurnby 2nd XI	Wadkins Way, Bushby, Leicester, Leicestershire	LE7 9NA
Houghton & Thurnby 3rd XI	Dixon's Field, Stretton Road, Houghton on the Hill, Leicestershire	LE7 9GD
Houghton & Thurnby Vets	Wadkins Way, Bushby, Leicester, Leicestershire	LE7 9NA
Houghton & Thurnby Friendly XI	Wadkins Way, Bushby, Leicester, Leicestershire	LE7 9NA
Houghton & Thurnby Senior Team	Wadkins Way, Bushby, Leicester, Leicestershire	LE7 9NA
Houghton & Thurnby Under 17	Wadkins Way, Bushby, Leicester, Leicestershire	LE7 9NA
Houghton & Thurnby Under 15 H	Wadkins Way, Bushby, Leicester, Leicestershire	LE7 9NA
Houghton & Thurnby Under 13 H	Dixon's Field, Stretton Road, Houghton on the Hill, Leicestershire	LE7 9GD
Houghton & Thurnby Girls Under 13	Wadkins Way, Bushby, Leicester, Leicestershire	LE7 9NA
Houghton & Thurnby Under 11 Hardball	Dixon's Field, Stretton Road, Houghton on the Hill, Leicestershire	LE7 9GD
Illston Abey 1st XI	Sigiriya Sports Ground, Illston on the Hill, Leicestershire	
Illston Abey 2nd XI	Sigiriya Sports Ground, Illston on the Hill, Leicestershire	
Illston Abey 3rd XI	Sigiriya Sports Ground, Illston on the Hill, Leicestershire	
Kibworth 1st XI	Kibworth CC, Fleckney Road, Kibworth Beauchamp, Leicestershire	LE8 0HG
Kibworth 2nd XI	Kibworth CC, Fleckney Road, Kibworth Beauchamp, Leicestershire	LE8 0HG
Kibworth 3rd XI	Kibworth CC, Fleckney Road, Kibworth Beauchamp, Leicestershire	LE8 0HG
Kibworth 4th XI	Kibworth CC, Fleckney Road, Kibworth Beauchamp, Leicestershire	LE8 0HG
Kibworth Sunday 1st XI	Kibworth CC, Fleckney Road, Kibworth Beauchamp, Leicestershire	LE8 0HG
Kibworth Midweek XI	Kibworth CC, Fleckney Road, Kibworth Beauchamp, Leicestershire	LE8 0HG
Kibworth Womens 1st XI	Kibworth CC, Fleckney Road, Kibworth Beauchamp, Leicestershire	LE8 0HG
Kibworth Under 17	Kibworth CC, Fleckney Road, Kibworth Beauchamp, Leicestershire	LE8 0HG
Kibworth Under 15 A	Kibworth CC, Fleckney Road, Kibworth Beauchamp, Leicestershire	LE8 0HG
Kibworth Under 15 B	Kibworth CC, Fleckney Road, Kibworth Beauchamp, Leicestershire	LE8 0HG
Kibworth Under 13A	Kibworth CC, Fleckney Road, Kibworth Beauchamp, Leicestershire	LE8 0HG
Kibworth Under 13B	Kibworth CC, Fleckney Road, Kibworth Beauchamp, Leicestershire	LE8 0HG
Kibworth Under 11A	Kibworth CC, Fleckney Road, Kibworth Beauchamp, Leicestershire	LE8 0HG
Kibworth Under 11B	Kibworth CC, Fleckney Road, Kibworth Beauchamp, Leicestershire	LE8 0HG
Kibworth Under 10	Kibworth CC, Fleckney Road, Kibworth Beauchamp, Leicestershire	LE8 0HG
Kibworth Under 10	Kibworth CC, Fleckney Road, Kibworth Beauchamp, Leicestershire	LE8 0HG
Langtons 1st XI	Cricket Ground East Langton, Main St, East Langton, Leicestershire	LE16 7TW
Langtons 2nd XI	Cricket Ground East Langton, Main St, East Langton, Leicestershire	LE16 7TW
Langtons Midweek XI	Cricket Ground East Langton, Main St, East Langton, Leicestershire	LE16 7TW
Langtons Friendly XI	Cricket Ground East Langton, Main St, East Langton, Leicestershire	LE16 7TW
Langtons Sun 1st XI	Cricket Ground East Langton, Main St, East Langton, Leicestershire	LE16 7TW
Langtons Under 15	Cricket Ground East Langton, Main St, East Langton, Leicestershire	LE16 7TW
Langtons Under 13	Cricket Ground East Langton, Main St, East Langton, Leicestershire	LE16 7TW
Langtons Under 11	Cricket Ground East Langton, Main St, East Langton, Leicestershire	LE16 7TW
Lutterworth 1st XI	Lutterworth CC, Coventry Road, Lutterworth, Leicestershire	LE17 4RE
Lutterworth 2nd XI	Lutterworth CC, Coventry Road, Lutterworth, Leicestershire	LE17 4RE
Lutterworth 3rd XI	Lutterworth CC, Coventry Road, Lutterworth, Leicestershire	LE17 4RE
Lutterworth 4th XI	Lutterworth CC, Coventry Road, Lutterworth, Leicestershire	LE17 4RE
Lutterworth Womens 1st XI	Ullesthorpe Playing Fields, Ashby Road, Ullesthorpe, Leicestershire	LE17 5DN
Lutterworth Under 17	Lutterworth CC, Coventry Road, Lutterworth, Leicestershire	LE17 4RE
Lutterworth Under 13	Lutterworth CC, Coventry Road, Lutterworth, Leicestershire	LE17 4RE
Lutterworth Under 11 Hardball	Lutterworth CC, Coventry Road, Lutterworth, Leicestershire	LE17 4RE
Lutterworth Under 11 Incredibal	Lutterworth CC, Coventry Road, Lutterworth, Leicestershire	LE17 4RE

Lutterworth Legends	Lutterworth CC, Coventry Road, Lutterworth, Leicestershire	LE17 4RE
Market Harborough 1st XI	Market Harborough CC, Fairfield Road, Market Harborough, Leicestershire	LE16 9QH
Market Harborough 2nd XI	Market Harborough CC, Fairfield Road, Market Harborough, Leicestershire	LE16 9QH
Market Harborough Under 15	Market Harborough CC, Fairfield Road, Market Harborough, Leicestershire	LE16 9QH
Market Harborough Under 13	Market Harborough CC, Fairfield Road, Market Harborough, Leicestershire	LE16 9QH
Market Harborough Under 11	Market Harborough CC, Fairfield Road, Market Harborough, Leicestershire	LE16 9QH
Market Harborough Under 10	Market Harborough CC, Fairfield Road, Market Harborough, Leicestershire	LE16 9QH
Market Harborough Under 10	Market Harborough CC, Fairfield Road, Market Harborough, Leicestershire	LE16 9QH
Medbourne 1st XI	Medbourne Sports Club, Hallaton Road, Medbourne, Leicestershire	LE16 8DR
Medbourne 2nd XI	Medbourne Sports Club, Hallaton Road, Medbourne, Leicestershire	LE16 8DR
Medbourne Midweek XI	Medbourne Sports Club, Hallaton Road, Medbourne, Leicestershire	LE16 8DR
Medbourne Sunday 1st XI	Medbourne Sports Club, Hallaton Road, Medbourne, Leicestershire	LE16 8DR
Medbourne Under 15	Medbourne Sports Club, Hallaton Road, Medbourne, Leicestershire	LE16 8DR
Medbourne Under 13	Medbourne Sports Club, Hallaton Road, Medbourne, Leicestershire	LE16 8DR
Medbourne Under 11	Medbourne Sports Club, Hallaton Road, Medbourne, Leicestershire	LE16 8DR
Medbourne Under 10	Medbourne Sports Club, Hallaton Road, Medbourne, Leicestershire	LE16 8DR
Rowland United 1st XI	Swinford Cricket Ground	LE176BA
Rowland United 2nd XI	Swinford Cricket Ground	LE176BA
Rowland United Midweek 1st XI	Swinford Cricket Ground	LE176BA
Rowland United Under 15	Swinford Cricket Ground	LE176BA
Rowland United Friendly 1st XI	Swinford Cricket Ground	LE176BA
Tilton & Lowesby Sunday 1st XI	Lowesby Cricket Ground, Hungarton Lane, Off Melton Road, Leicestershire	
Tilton & Lowesby Sunday 2nd XI	Lowesby Cricket Ground, Hungarton Lane, Off Melton Road, Leicestershire	
Tilton & Lowesby Mid-Week Borough League 1st XI	Lowesby Cricket Ground, Hungarton Lane, Off Melton Road, Leicestershire	
Laughton & Mowsley 1st XI		
Laughton & Mowsley 2nd XI		

## APPENDIX 7: SCHOOLS, PITCHES AND THEIR COMMUNITY USE

Site Name	Ownership Type	Management	Grass pitches			Artificial pitch	Comments
			Football	Rugby	Cricket		
Secondary schools							
Kibworth High School and Community Technology College, Kibworth	Academy	Academy	2 x 11v11 Not available	1 snr Not available		60 x 40 3G Available and used.	Insufficient pitch provision to meet the school needs. Will need 1 extra rugby and 1 more 11v11. Need to improve drainage.
Lutterworth College	Academy	Academy	1 x 11v11 1 x 11v11Y 1 x 9v9 1 x 7v7 Not available	1 snr Not available	1 AGP Not available	1 x full size hockey Available and used	
Lutterworth High Academy	Academy	Academy	1 x 11v11 Not available				
Robert Smyth Academy, Market Harborough	Academy	Academy via block bookings	2 x 11v11 Available and used regularly	1 snr Occasional use by Market Harborough RFC	1 AGP Not used		Use Harborough Town for 9v9. Need additional pitch space, 9v9 pitches, and poss extra rugby pitch. Used to max capacity.

Site Name	Ownership Type	Management	Grass pitches			Artificial pitch	Comments
			Football	Rugby	Cricket		
Thomas Eastley Community College	Academy	Academy	5v5 7v7 9v9 11v11 Y  Available and used				
Welland Park Academy, Market Harborough	Academy	Academy	1 x 11v11 Y  Not available	1 snr  Not available		1 full size hockey  Available and used	Uses Market Harb RFC for occasional school matches (2-8 times per year). Insufficient pitch space to meet current needs, require at least 1 11v11 football pitch. In future likely need for 2 x 11v11 football pitches. Existing grass pitches need improvement.
Independent schools							
Brook House College, Market Harborough	Independent School	Independent School	No pitches				Use Harborough Town for football academy. Small school.
Leicester Grammar School	Independent School	Independent School	2 x mini  Not available	4 snr 2 mini  Not available	2  Not available	2 x full size hockey AGPs.  AGPs.	Grass pitches not available. AGPs used by Leicester Ladies HC and Leicester Men's HC.  Require 2x extra rugby pitches, 2 x cricket.

Site Name	Ownership Type	Management	Grass pitches			Artificial pitch	Comments
			Football	Rugby	Cricket		
Primary schools							
Church Langton CE (Aided)	Primary school	Primary school	2 x 7v7 Not available				Land owned by charity who do not allow access out of school hours.
Fleckney C of E	Primary school	Primary school	1 x 9v9 1 x 7v7 Approx Not available				
Ridgeway	Primary school	Primary school	7v7 approx Available but not used				School may be potentially interested but notes that there would need to be effective management.
St Joseph's CEVA	Primary school	Primary school	2 x 7v7 Not available	3 x mini Not available			
St Mary's, Bitteswell	Primary school	Primary school	7v7 approx Not available				School may be potentially interested but notes that there would need to be effective management. The pitch itself is poor quality and also forms part of a conservation area.
South Kilworth	Primary school	Primary school	5v5				Uses Lutterworth College for tournaments.

Site Name	Ownership Type	Management	Grass pitches			Artificial pitch	Comments
			Football	Rugby	Cricket		
			Not available				
Swinford C of E	Primary school	Primary school	7v7 Available but not used				No demand as community playing field has cricket and football and is much bigger and better.

North West Market Harborough SDA

	2021	2026	2031	Total
Completions	329	600	571	1500

	2021	2026	2031
Total number of dwellings completions during period	329	600	571
Vacancy rate %	4%	4%	4%
Number of occupied dwellings	315.84	576	548.16
Housing multiplier	2.3	2.3	2.3
Total population	726	1325	1261

3312      3450

	% of population in this age group at completion of the development	Population from new housing completions (trajectory 17/05/17)			Aged population of SDAs			Aged population of SDAs M/F assume 50% split		
		2021	2026	2031	2021	2026	2031	2021	2026	2031
0-4	11.29	82	150	142	82	150	142	41	75	71
5-9	10.00	73	132	126	73	214	292	36	107	146
10-14	8.90	65	118	112	65	190	327	32	95	163
15-19	6.75	49	89	85	49	154	276	25	77	138
20-24	4.60	33	61	58	33	110	212	17	55	106
25-29	8.53	62	113	108	62	146	217	31	73	109
30-34	11.66	85	154	147	85	216	293	42	108	147
35-39	11.47	83	152	145	83	237	361	42	118	181
40-44	9.33	68	124	118	68	207	354	34	103	177
45-49	5.95	43	79	75	43	147	282	22	73	141
50-54	4.79	35	63	60	35	107	207	17	53	103
55-59	2.02	15	27	26	15	62	132	7	31	66
60-64	2.27	16	30	29	16	45	90	8	22	45
65-69	0.98	7	13	12	7	29	57	4	15	29
70-74	0.86	6	11	11	6	19	40	3	9	20
75-79	0.49	4	7	6	4	13	25	2	6	12
80-84	0.12	1	2	2	1	5	14	0	3	7
85-90	0	0	0	0	0	1	5	0	0	3
90+	0	0	0	0	0	0	1	0	0	0
Total		726	1325	1261	726	2051	3328	363	1026	1664
		3312								

East of Lutterworth

	2021	2026	2031
Completions	0	412	1088

	2021	2026	2031	2031
Total number of dwellings completed during period	0	412	1088	1500
Vacancy rate %	4%	4%	4%	4%
Number of occupied dwellings	0	395.52	1044	1440
Housing multiplier	2.3	2.3	2.3	2.3
Total population	0	910	2402	3312

	% of population in this age group at completion of the development	Population from new housing completions (trajectory 17/05/17)			Aged population of SDAs			Aged population of SDAs M/F assume 50% split		
		2021	2026	2031	2021	2026	2031	2021	2026	2031
0-4	11.29	0	103	271	0	103	271	0	51	136
5-9	10.00	0	91	240	0	91	374	0	45	187
10-14	8.90	0	81	214	0	81	305	0	40	152
15-19	6.75	0	61	162	0	61	243	0	31	122
20-24	4.60	0	42	111	0	42	172	0	21	86
25-29	8.53	0	78	205	0	78	247	0	39	123
30-34	11.66	0	106	280	0	106	358	0	53	179
35-39	11.47	0	104	276	0	104	382	0	52	191
40-44	9.33	0	85	224	0	85	328	0	42	164
45-49	5.95	0	54	143	0	54	228	0	27	114
50-54	4.79	0	44	115	0	44	169	0	22	85
55-59	2.02	0	18	49	0	18	92	0	9	46
60-64	2.27	0	21	55	0	21	73	0	10	36
65-69	0.98	0	9	24	0	9	44	0	4	22
70-74	0.86	0	8	21	0	8	30	0	4	15
75-79	0.49	0	4	12	0	4	20	0	2	10
80-84	0.12	0	1	3	0	1	7	0	1	4
85-90	0	0	0	0	0	0	1	0	0	1
90+	0	0	0	0	0	0	0	0	0	0
Total		0	910	2402	0	910	3343	0	455	1671
			3312							



Scraptoft North

	2021	2026	2031
Completions	0	524	676

	2021	2026	2031
Total number of dwellings during period	0	524	676
Vacancy rate %	4%	4%	4%
Number of occupied dwellings	0	503.04	648.96
Housing multiplier	2.3	2.3	2.3
Total population	0	1157	1493

	2031
Total by 2031	1200
Vacancy rate %	4%
Number of occupied dwellings	1152
Housing multiplier	2.3
Total population	2650

	% of population in this age group at completion of the development	Population from new housing completions (trajectory 17/05/17)			Aged population of SDAs			Aged population of SDAs M/F assume 50% split		
		2021	2026	2031	2021	2026	2031	2021	2026	2031
0-4	11.29	0	131	168	0	131	168	0	65	84
5-9	10.00	0	116	149	0	116	299	0	58	150
10-14	8.90	0	103	133	0	103	248	0	51	124
15-19	6.75	0	78	101	0	78	204	0	39	102
20-24	4.60	0	53	69	0	53	147	0	27	73
25-29	8.53	0	99	127	0	99	181	0	49	90
30-34	11.66	0	135	174	0	135	273	0	67	136
35-39	11.47	0	133	171	0	133	306	0	66	153
40-44	9.33	0	108	139	0	108	272	0	54	136
45-49	5.95	0	69	89	0	69	197	0	34	98
50-54	4.79	0	55	71	0	55	140	0	28	70
55-59	2.02	0	23	30	0	23	86	0	12	43
60-64	2.27	0	26	34	0	26	57	0	13	29
65-69	0.98	0	11	15	0	11	41	0	6	20
70-74	0.86	0	10	13	0	10	24	0	5	12
75-79	0.49	0	6	7	0	6	17	0	3	9
80-84	0.12	0	1	2	0	1	8	0	1	4
85-90	0	0	0	0	0	0	1	0	0	1
90+	0	0	0	0	0	0	0	0	0	0
Total		0	1157	1493	0	1157	2669	0	578	1334
			2650							

**Total SDA population**

	Aged population of SDAs			Aged population of SDAs M/F assume 50% split		
	2021	2026	2031	2021	2026	2031
0-4	82	383	582	41	191	291
5-9	73	421	965	36	211	482
10-14	65	374	880	32	187	440
15-19	49	293	722	25	147	361
20-24	33	205	531	17	103	265
25-29	62	323	645	31	161	322
30-34	85	457	924	42	229	462
35-39	83	474	1049	42	237	524
40-44	68	400	955	34	200	477
45-49	43	270	706	22	135	353
50-54	35	206	516	17	103	258
55-59	15	103	310	7	52	155
60-64	16	92	220	8	46	110
65-69	7	50	142	4	25	71
70-74	6	36	94	3	18	47
75-79	4	23	62	2	11	31
80-84	1	8	29	0	4	15
85-90	0	1	8	0	0	4
90+	0	0	1	0	0	0
<b>Total</b>	<b>726</b>	<b>4118</b>	<b>9340</b>	<b>363</b>	<b>2059</b>	<b>4670</b>

## APPENDIX 9: SPORT ENGLAND PITCH CALCULATOR FOR SDAs

### Playing Pitch Demand Calculator

Note: Before the calculator can work it requires certain data from the authority's playing pitch strategy assessment work to be entered - see 'PPS Data' sheet.

#### PART ONE: Local Authority and population details

- Select the local authority from the list.
- Enter the total population of the local authority.
- Enter the new population to estimate the demand for.

#### PART TWO: Estimated demand in match equivalent sessions a week (a season for Cricket)

Adult football =	0.00
Youth football =	0.00
Mini soccer =	0.00
Rugby Union =	0.00
Rugby League =	0.00
Hockey =	0.00
Cricket =	0.00

#### PART THREE: Determine the most appropriate way to meet the estimated demand

- Look at the location of the new population alongside the results of the playing pitch strategy assessment work.
- Understand the nature of playing pitch sites within an appropriate catchment of the new population and issues in the area.
- This may lead to suggestions of one or more ways of meeting the estimated demand, such as:
  - Enhancing existing pitches to increase their capacity and ensure adequate maintenance to maintain the higher use;
  - Securing greater community access to sites and undertaking any necessary works to allow for such use to occur;
  - Providing new playing pitches on new sites (natural or artificial grass pitches).
- When deciding on the most appropriate way of meeting the estimated demand regard should be had to the Government's regulations, policy and guidance regarding the Community Infrastructure Levy (CIL) and the use of planning obligations. [Link here](#) to the CIL section of the Government's Planning Practice Guidance.

#### PART FOUR: Estimated demand in new playing pitches

It may be decided that the estimated demand should be met by the creation of new natural and/or artificial grass pitches. If this is the case then an indication of the number of new pitches that may be required to meet the estimated demand is provided below. This is based on providing natural grass pitches for football, rugby and cricket and new artificial grass pitches for hockey.

An estimate of the associated costs for providing this level of new pitches is also provided. Please note these are indicative costs only and appropriate local work should be undertaken to determine more accurate costings.

Total =	0.00
Adult Football =	0.00
Youth Football =	0.00
Mini Soccer =	0.00
Rugby Union =	0.00
Rugby League =	0.00
Hockey =	0.00
Cricket =	0.00

pitches at a capital cost of	£0	and a total life cycle cost (per annum) of	£0
pitches at a capital cost of	£0	and a total life cycle cost (per annum) of	£0
pitches at a capital cost of	£0	and a total life cycle cost (per annum) of	£0
pitches at a capital cost of	£0	and a total life cycle cost (per annum) of	£0
pitches at a capital cost of	£0	and a total life cycle cost (per annum) of	£0
pitches at a capital cost of	£0	and a total life cycle cost (per annum) of	£0
pitches at a capital cost of	£0	and a total life cycle cost (per annum) of	£0

[Source of costs:](#)  
[Capital Cost - Sport England Facilities Costs Second Quarter 2016](#)  
[Lifecycle Costs - Sport England Life Cycle Costs Natural Turf Pitches and Artificial Surfaces April 2012](#)

## Playing Pitch Demand Calculator - PPS Data Required

To provide an estimate of demand the calculator requires the following information from the local authority's playing pitch strategy assessment work:

1. The current population in each pitch sport age group
2. The Team Generation Rate (TGR) for each pitch sport age group

The above information should be available from the assessment work and should be copied across/entered into the sections below.

As a default, the calculator assumes that:

- a. All of the estimated demand generated from the new population will take place at the peak time in the week for the respective sports and age groups within the authority area, and
- b. The level of demand is in line with the current level of demand in the area (i.e. it uses current TGRs for the area with no change in the level of demand for any sports).

The two assumptions can be overridden by amending the ('Percentage of match play in the peak period' and 'Projected change in demand') details below against any of the individual pitch sport age groups, in line with information from the authority's playing pitch strategy assessment work.

Sport and Age Groups	Required Information		Optional Information	
	1. Current population in each pitch sport age group in	2. Current team generation rates for	a. Percentage of match play in the peak period (N/a for Cricket*. If unknown for other sports leave as 100%)	b. Projected change in demand
Football Adult Men 11v11 (16-45yrs)	2,411	376	65%	0%
Football Adult Women 11v11 (16-45yrs)	2,411	2,411	0%	126%
Football Youth Boys 11v11 (12-15yrs)	336	43	91%	8%
Football Youth Girls 11v11 (12-15yrs)	336	1,360	91%	10%
Football Youth Boys 9v9 (10-11yrs)	176	55	96%	8%
Football Youth Girls 9v9 (10-11yrs)	176	219	96%	10%
Football Mini Soccer Mixed 7v7 (8-9yrs)	386	72	90%	20%
Football Mini Soccer Mixed 5v5 (6-7yrs)	386	70	90%	20%
Cricket Open Age Mens (18-55yrs)	2,838	332	N/a	7%
Cricket Open Age Womens (18-55yrs)	2,838	10,400	N/a	130%
Cricket Junior Boys (7-18yrs)	1,018	164	N/a	7%
Cricket Junior Girls (7-18yrs)	1,018	6,080	N/a	130%
Rugby Union Senior Men (19-45yrs)	2,194	1,593	100%	3%
Rugby Union Senior Women (19-45yrs)	2,194	12,820	0%	3%
Rugby Union Youth Boys (13-18yrs)	465	400	0%	3%
Rugby Union Youth Girls (13-18yrs)	465	592	0%	3%
Rugby Union Mini/Midi Mixed (7-12yrs)	914	164	0%	3%
Rugby League Adult Men (19-45yrs)			100%	0%
Rugby League Adult Women (19-45yrs)			100%	0%
Rugby League Youth & Junior Boys (12-18yrs)			100%	0%
Rugby League Junior Girls (12-18yrs)			100%	0%
Rugby League Primary Mixed (7-11yrs)			100%	0%
Hockey Senior Men (16-55yrs)	2,982	2,404	100%	8%
Hockey Senior Women (16-55yrs)	2,982	1,978	100%	8%
Hockey Junior Boys (11-15yrs)	424	5,520	0%	8%
Hockey Junior Girls (11-15yrs)	424	1,024	0%	8%

\*. N/a for Cricket as demand is assessed across the season as opposed to the across the week.

## APPENDIX 10: SPORT ENGLAND PITCH CALCULATOR FOR OTHER DEVELOPMENTS

### Playing Pitch Demand Calculator

Note: Before the calculator can work it requires certain data from the authority's playing pitch strategy assessment work to be entered - see 'PPS Data' sheet.

#### PART ONE: Local Authority and population details

- Select the local authority from the list.
- Enter the total population of the local authority.
- Enter the new population to estimate the demand for.

#### PART TWO: Estimated demand in match equivalent sessions a week (a season for Cricket)

Adult football =	0.00
Youth football =	0.00
Mini soccer =	0.00
Rugby Union =	0.00
Rugby League =	0.00
Hockey =	0.00
Cricket =	0.00

#### PART THREE: Determine the most appropriate way to meet the estimated demand

- Look at the location of the new population alongside the results of the playing pitch strategy assessment work.
- Understand the nature of playing pitch sites within an appropriate catchment of the new population and issues in the area.
- This may lead to suggestions of one or more ways of meeting the estimated demand, such as:
  - Enhancing existing pitches to increase their capacity and ensure adequate maintenance to maintain the higher use;
  - Securing greater community access to sites and undertaking any necessary works to allow for such use to occur;
  - Providing new playing pitches on new sites (natural or artificial grass pitches).
- When deciding on the most appropriate way of meeting the estimated demand regard should be had to the Government's regulations, policy and guidance regarding the Community Infrastructure Levy (CIL) and the use of planning obligations. [Link here](#) to the CIL section of the Government's Planning Practice Guidance.

#### PART FOUR: Estimated demand in new playing pitches

It may be decided that the estimated demand should be met by the creation of new natural and/or artificial grass pitches. If this is the case then an indication of the number of new pitches that may be required to meet the estimated demand is provided below. This is based on providing natural grass pitches for football, rugby and cricket and new artificial grass pitches for hockey.

An estimate of the associated costs for providing this level of new pitches is also provided. Please note these are indicative costs only and appropriate local work should be undertaken to determine more accurate costings.

Total =	0.00
Adult Football =	0.00
Youth Football =	0.00
Mini Soccer =	0.00
Rugby Union =	0.00
Rugby League =	0.00
Hockey =	0.00
Cricket =	0.00

pitches at a capital cost of	£0	and a total life cycle cost (per annum) of	£0
pitches at a capital cost of	£0	and a total life cycle cost (per annum) of	£0
pitches at a capital cost of	£0	and a total life cycle cost (per annum) of	£0
pitches at a capital cost of	£0	and a total life cycle cost (per annum) of	£0
pitches at a capital cost of	£0	and a total life cycle cost (per annum) of	£0
pitches at a capital cost of	£0	and a total life cycle cost (per annum) of	£0
pitches at a capital cost of	£0	and a total life cycle cost (per annum) of	£0

[Source of costs:](#)  
[Capital Cost - Sport England Facilities Costs Second Quarter 2016](#)  
[Lifecycle Costs - Sport England Life Cycle Costs Natural Turf Pitches and Artificial Surfaces April 2012](#)

## Playing Pitch Demand Calculator - PPS Data Required

To provide an estimate of demand the calculator requires the following information from the local authority's playing pitch strategy assessment work:

1. The current population in each pitch sport age group
2. The Team Generation Rate (TGR) for each pitch sport age group

The above information should be available from the assessment work and should be copied across/entered into the sections below.

As a default, the calculator assumes that:

- a. All of the estimated demand generated from the new population will take place at the peak time in the week for the respective sports and age groups within the authority area, and
- b. The level of demand is in line with the current level of demand in the area (i.e. it uses current TGRs for the area with no change in the level of demand for any sports).

The two assumptions can be overridden by amending the ('Percentage of match play in the peak period' and 'Projected change in demand') details below against any of the individual pitch sport age groups, in line with information from the authority's playing pitch strategy assessment work.

Sport and Age Groups	Required Information		Optional Information	
	1. Current population in each pitch sport age group in	2. Current team generation rates for	a. Percentage of match play in the peak period (N/a for Cricket*. If unknown for other sports leave as 100%)	b. Projected change in demand
Football Adult Men 11v11 (16-45yrs)	14,300	376	65%	0%
Football Adult Women 11v11 (16-45yrs)	14,260	14,260	0%	126%
Football Youth Boys 11v11 (12-15yrs)	2,200	43	91%	8%
Football Youth Girls 11v11 (12-15yrs)	2,040	1,360	91%	10%
Football Youth Boys 9v9 (10-11yrs)	1,120	55	96%	8%
Football Youth Girls 9v9 (10-11yrs)	1,040	219	96%	10%
Football Mini Soccer Mixed 7v7 (8-9yrs)	2,160	72	90%	20%
Football Mini Soccer Mixed 5v5 (6-7yrs)	2,160	70	90%	20%
Cricket Open Age Mens (18-55yrs)	20,600	332	N/a	7%
Cricket Open Age Womens (18-55yrs)	20,800	10,400	N/a	130%
Cricket Junior Boys (7-18yrs)	6,560	164	N/a	7%
Cricket Junior Girls (7-18yrs)	6,080	6,080	N/a	130%
Rugby Union Senior Men (19-45yrs)	12,740	1,593	100%	3%
Rugby Union Senior Women (19-45yrs)	12,820	12,820	0%	3%
Rugby Union Youth Boys (13-18yrs)	3,200	400	0%	3%
Rugby Union Youth Girls (13-18yrs)	2,960	592	0%	3%
Rugby Union Mini/Midi Mixed (7-12yrs)	5,400	164	0%	3%
Rugby League Adult Men (19-45yrs)			100%	0%
Rugby League Adult Women (19-45yrs)			100%	0%
Rugby League Youth & Junior Boys (12-18yrs)			100%	0%
Rugby League Junior Girls (12-18yrs)			100%	0%
Rugby League Primary Mixed (7-11yrs)			100%	0%
Hockey Senior Men (16-55yrs)	21,640	2,404	100%	8%
Hockey Senior Women (16-55yrs)	21,760	1,978	100%	8%
Hockey Junior Boys (11-15yrs)	2,760	5,520	0%	8%
Hockey Junior Girls (11-15yrs)	2,560	1,024	0%	8%

\*. N/a for Cricket as demand is assessed across the season as opposed to the across the week.