

02/11/19

Issue 7



Harbourough District Community Safety Partnership



Inside this issue:

Police Contact Information

Local Initiatives

Local Crime Update

Fire Service Consultation

Parish Consultation

Domestic Abuse Awareness

Training Available

Keep Safe Places

Hate Crime Awareness

Annual Parish Liaison Event

Secure Allotments
Campaign

Annual Scrutiny Meeting

Share the Road

Don't Be Fooled

Save the Date

Photo & News

Contact Information



Welcome

All too quickly, Winter arrives, and the campaigns move to Darker Nights, promoting how to keep both you and your home safe while out and about, and Celebrate Safely, raising awareness of safety tips throughout the festive season. We have updates on news from the Harbourough District Community Safety Partnership (CSP), crime, and some local initiatives supporting a reduction in crime and ASB. Furthermore, the Community Safety Team are able to attend your Parish Meetings, if you feel it would be helpful, to discuss certain issues or deliver training. For more information see our [website](#).

Modern Slavery

Following the Modern Slavery Intensification Week in October, we're more aware of the signs and where to report it. There is no one type of modern slavery, there is no one type of victim, and there is no one type of modern slavery offender. Someone in slavery might appear to be under **someone else's control, reluctant to interact** with others, they may **not have personal identification** on them, have **few belongings**, appear **frightened**, or be dropped off and collected for work at unusual times. If you suspect that someone is in slavery, **do not confront** them, potentially more people can be rescued if the right services are notified first, instead please contact the Modern Slavery Helpline, as pictured, or the Police. To learn more about Modern Slavery, please visit their [website](#).



Celebrate Safely

From September to January we promote celebrating safely. Much of the information is common sense, but you'd be surprised, or maybe not, by just how many people are injured each year by not adhering to such simple advice. The Independent found that just under 5000 people attended A&E because of an injury caused by a firework in 2017, half of those admitted were under 18, and 80% were male. So whilst we may be sharing messages that you already know, it doesn't hurt to share them again and again. To read safety advice for the different festivities, have a look at the [website](#).



Police Contact Information

The alternative to phoning 101 is to report crimes to Leicestershire Police online. Reports are triaged, given a crime number and dealt with as they would do if they were reported over the phone. Have a look at www.leics.police.uk for more information and follow the links to report.

Local Initiatives

The PSPO (Public Spaces Protection Order) for alcohol related ASB is now live on the [website](#).

Nitrous Oxide - Following the last quarterly newsletter, Foxton Parish have been in touch to ask for an e-copy of the Nitrous Oxide poster to put up in the area as they too have found empty canisters. As this problem has been increasing across the district, education packages are being put together for local schools, and we are considering other multi agency approaches to raise awareness of the potential harms of 'using' the gas. For more advice, or posters for your area, please contact communitysafety@harborough.gov.uk.

Litter Picking - A huge thank you to those that litter pick in their spare time. We've seen messages in facebook groups from people out and about in Broughton Astley and other villages doing their bit and more. To organise a community litter pick, Harborough District Council can provide 'litter pickers', bags, gloves and hi-vis, and can organise for FCC to collect the waste once there is an agreed location. They do advise getting Public Liability Insurance to cover your volunteers though. For further information or support, contact the waste team on waste@harborough.gov.uk.

Report on the Young Peoples views on Recreation Facilities in The Kibworths - Thank you again to Siân Newnes, for conducting the consultation and writing the subsequent report showing over 350 young people completed the survey. Many of the young people surveyed suggested that they would like a skate park reinstating and a MUGA (multi-use games area) to include a basketball net.

Lutterworth Fatal 4 - Unfortunately the school sessions have had to be rearranged for later in the year, however, the Fire Service have been liaising with Magna Park to have some of their lorries branded with Fatal 4 messages highlighting the 4 offences most likely to cause death or serious injury. Keep your eyes peeled!

Leicestershire Police
Prevention and Community

**WARNING:
NITROUS OXIDE
(‘LAUGHING GAS’)**

Inhaling nitrous oxide can be dangerous, and can lead to loss of blood pressure, fainting and even heart attack. Prolonged exposure to nitrous oxide may also result in bone marrow suppression and poisoning of the central nervous system. These risks are likely to be exacerbated if the exposure to the gas is combined with alcohol and other drugs (home office)

It is an offence to supply nitrous oxide to persons under the age of 18 for the purpose of intoxication - Intoxicating Substances (Supply) Act 1985

Operation NitroX
Thinking - not doing
10000 999 311

Contact details
For more information contact your neighbourhood team on 101
or visit our website at www.leics.police.uk

IT'S NOT WORTH THE RISK



Local Crime Update

Sheep Theft and Illegal Butchering - Since the beginning of 2019, at least 260 ewes, rams and lambs have been brutally killed and stripped of their meat, illegally, in fields across Leicestershire, Northamptonshire and Warwickshire. It is incredibly worrying for farmers, and there is a real risk to health from eating meat from carcasses that have not been processed in a licensed abattoir. Officers across the counties are working together to catch those behind the butchering, and in October three men from Birmingham were arrested, charged and remanded in custody. Advice is to remain vigilant and report suspicious activity and vehicles to the Police on 101 or 999 in an emergency.



Domestic Burglary - There has been an increase in the number of domestic burglaries reported in the Broughton Astley area, including shed breaks. The CSP have purchased a number of alarms for sheds, to be given out to victims and those that feel at risk. Please contact your **local beat team** for more information.

Vehicle Breaks and Vehicle Thefts - There are still issues with vehicle breaks and car thefts across the district, with Hallaton, Medbourne, the Langtons, Lutterworth and Harborough being hit in September. Cross border tactics are being employed, and a Police focus on tool thefts and theft of vans.

Catalytic Converter Thefts - If you see something suspicious happening, report it on 999! Thefts of catalytic converters have been increasing this last month, and some have been during the day, in staff and public carparks. In one instance, a witness thought someone was servicing a car, until they saw the perpetrator suddenly run to another car and drive off, with the catalytic converter!



“Your Service Your Say” Fire Service Consultation

Leicestershire Fire and Rescue Service is seeing public consultation following the launch of their Integrated Risk Management Plan (IRMP). To participate in the IRMP consultation, please complete the **survey here**.

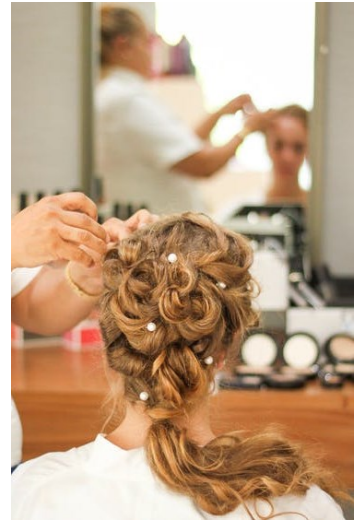
Parish Consultation

Each year the Community Safety Partnership reassess the priorities we focus on in order to meet the needs of our community. Please consult your parishioners to complete the consultation, this is your opportunity to help shape the three year community safety strategy. We will notify Parish Councillors when this goes live, but you can keep an eye on our **website** which will also be updated.



Domestic Abuse Awareness - Training Available

Throughout November, the CSP is visiting hair and beauty salons across the district to deliver advice for dealing with suspected domestic abuse. For many women, hairdressers and beauty salons are safe, female only spaces, where they feel at ease with stylists they trust. So, salon professionals are in a unique position to recognise the signs and symptoms of abuse in their clients. Kerri McAuley, a mum of two, was murdered by her abusive boyfriend in Norwich. She had previously confided in her hairdresser about the abuse. Whilst her death may not have been prevented, there were many more failures along the way and Harborough District Council want to raise awareness of the action that could be taken by salon professionals who become privy to similar information. We are also running free training sessions for mobile workers. If you would like to attend a training session regarding recognising the signs of domestic abuse and where to signpost clients who are victims of domestic abuse, please contact communitysafety@harborough.gov.uk.



Keep Safe Places (KSPs)

Darker Nights is a campaign raising awareness of Keep Safe Places (KSPs). KSPs are safe places out and about where staff are able to 'look after' people who come in, needing a moment. Staff can offer you a seat, maybe a quiet spot, and offer to phone friends or family for you if necessary. To see where safe places are near you, or somewhere you might be visiting, have a look at the [Leicestershire County Council website](https://www.leicestershire-council.gov.uk/), or to volunteer your place as a safe place, contact communitysafety@harborough.gov.uk.



A graphic with a green background. At the top, there is a photo of hands holding a rainbow flag. Below it, text says 'Say no to hate' and 'Say yes to help'. Then, 'Respect difference, say NO to hate.' and '#SAFERSUMMER'. The main heading is 'Harborough District Council is a hate reporting centre'. Below that, a definition: 'A hate incident is any incident where someone has been targeted because they are seen or believed to be different. This may be because of: disability | gender identity | race | religion | belief | sexual orientation'. At the bottom, it says 'We can help you to report incidents and provide support. This can assist us in preventing further incidents.' and has two small logos.

Hate Crime Awareness

National Hate Crime Awareness Week was promoted over the whole month of October, so events didn't clash with the Leicestershire half-term. The most reported hate type within Harborough District is racism, and second is against disabilities. We have raised awareness of what hate incidents look like locally, and how to report hate incidents or hate crime. You can report hate at the Harborough District Council offices. It is important to report hate incidents, which may be in the form of graffiti, name calling or online abuse, to name a few, as it may help us prevent further incidents. For further information, please see our [webpage](#).

Annual Parish Liaison Event

The annual parish event is now in its sixth year, and is being held on Wednesday 6th November at the Leicester Grammar School. The Community Safety Partnership will be hosting a table discussion on local issues Parishes face, and how the CSP can help. The Police will also be attending and there will be a stall on vehicle crime. The event is always well attended, with good food on offer, and opportunities for networking, learning about planning, the neighbourhood and local plans, elections and much more.



Secure Allotments Campaign

Allotment owners invest a lot of time and money in making the best of their plots and with sheds, containing expensive garden tools sited very close to each other, and often set away from residential areas, they can be very attractive to thieves. The CSP are organising a secure allotment campaign to start in February, in time for spring gardening. We will be purchasing some examples of different shed locks, to show their effectiveness and talking to allotment owners about improving site security. For more information, or to enquire about us attending a local club to deliver the information, please contact communitysafety@harborough.gov.uk.



Annual Scrutiny Meeting

Each year the Council invite local Registered Housing Providers (RHPs) often Housing Associations, to update members on how they are investing in affordable housing in the Harborough District. Usually, this is the development teams, who buy the land, secure the funding, and build the homes. However this year, the focus was on attaining a consistent approach to managing anti-social behaviour effectively across the district and RHPs. The meeting was really helpful, enabling good networking, and also an opportunity for members to gain a better understanding of the procedures involved in managing ASB.

Share The Road Campaign

The Share The Road campaign encourages everyone who uses the roads to treat each other respectfully. The Police have consulted a number of road users such as horse riders, runners, cyclists and pedestrians, and devised some handy hints and tips about keeping yourself safer and playing your part in keeping the road safer for sharing. More details can be found on their [website](#).



Don't be Fooled

Nationally there has been an increase in cases where young people have been asked, by fraudsters, to receive and send money through their own bank accounts, usually with incentives such as being allowed to keep some of the cash for themselves. If this happens, the young person is a money mule and involved in money laundering, which is a crime. In Leicestershire, between April 2009 and May 2018, just under 5000 suspected money mule accounts were closed by the banks. Of those, just under 3000 closures were for individuals aged 30 and under. The campaign 'Don't Be Fooled' launched again in August, to warn young people about the dangers of becoming 'money mules'. It also serves to alert parents and carers to the fraud and warns to look for tell-tale signs that someone they know may be involved, such as suddenly having extra cash, buying expensive clothes or gadgets, with little explanation as to where they got the money. For more information have a look at their [website](#).

Fourteen minutes a week to make fast cash.

Fourteen years to pay the price.

**Apply now.
Easy job, big cash pay outs.
No experience necessary.**

***must be willing to provide bank details and break the law.**



Save the Date - Rural Crime Event

The next Rural Crime Information Event has been booked for 3rd February 2020 at the Coplow Centre in Billesdon. To register your interest in the event please email communitysafety@harborough.gov.uk. Details of how to book your place will be revealed soon.

Photo and News Opportunities

The front page photo is of Bunkers Hill between Gumley and Theddingworth, which is very scenic, if narrow. Whilst I'm enjoying exploring the district, if you have photos or news from around the Harborough District that you would like to have featured in the quarterly parish e-newsletter, please submit them by January 2020 to r.woods@harborough.gov.uk

Harborough District Council
The Symington Building
Adam and Eve Street
Market Harborough
LE16 7AG

Phone: 01858 828282
E-mail: communitysafety@harborough.gov.uk



@HarbCSP



Facebook.com/HDCSP



Harborough District
Community Safety Partnership

Keeping Harborough District Safer Together