



# Community Safety Partnership Newsletter

## Inside this issue:

- Vehicle Crime (cont.)
- Police Contact Information
- Lutterworth Little Cooking Project
- Fraud, Scams and Cybercrime Awareness
- Rural Crime Event
- Domestic Abuse Campaign Update
- Emergency Planning
- Secure Allotments Campaign
- Road Safety
- Knife Crime
- Photo & News Opportunities
- Contact Information

## Welcome

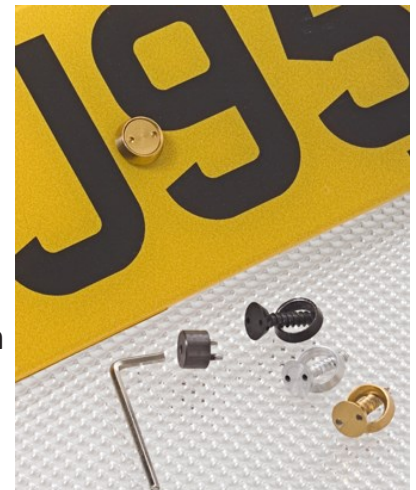
So we're well into the new year now, and recently we've been experiencing more extreme weather, hotter, drier summers and significant rainfall. Whilst we've not been as affected as some counties, we could all do with learning about emergency planning and how to protect our homes and businesses from natural disasters. This issue contains information on Emergency Planning, current and upcoming campaigns, and updates about local initiatives supporting a reduction in crime and ASB.

## Vehicle Crime

Incidents of crimes relating to vehicles have been increasing nationwide, and reducing acquisitive crime remains a priority for the Harborough Community Safety Partnership. The **Crime**

**Prevention website** has helpful advice on how to reduce the likelihood of theft from, such as keeping things out of sight, doors locked, removing anything

portable (jackets, bags, laptops etc) and wiping away suction cup marks. Regarding property that is unlikely to be removed from the



vehicle, such as blue badges and some tools, they suggest using a property marking and registration scheme, see details below. To reduce thefts of number plates, you can purchase 'anti-theft number plate screws'. You can buy locking wheel nuts to prevent wheel theft, and if your car engine has a high ground clearance, consider having the catalytic converter chemically engraved.

Continued on page 2.

## Vehicle Crime (continued from front page)

Car keyless entry fobs emit a short range signal, allowing cars to be opened without pressing any button on the fob. Criminals have been using signal amplifiers to gain entry to these types of cars. You can prevent this type of crime by putting the keyless fob into a **signal blocker faraday bag**. These bags block the signal so criminals cannot use this method to enter your car. There are some signal blocker faraday bags for sale at Harborough Police Station for £2 or if you contact your local officers, we can arrange to bring them to the beat surgeries. The Community Safety Partnership have put together a Vehicle Crime Pack for Parishes, details available shortly.

**Free Tool Marking Available** through the local police or through SDS Trade Equipment Ltd, on the Riverside Industrial Estate in Market Harborough.

**Catalytic Converter Thefts** - If you see something suspicious happening, report it on 999! Theft of a catalytic converter can be carried out in under 4 minutes, if you see someone 'working on a car' in a public place, even if they are wearing a uniform, **report it**.



### Police Contact Information

The alternative to phoning 101 is to report crimes to Leicestershire Police online. Reports are triaged, given a crime number and dealt with as they would do if they were reported over the phone. Have a look at [www.leics.police.uk](http://www.leics.police.uk) for more information and follow the links to report.

### Lutterworth Little Cooking Project



A fantastic project set up by a lovely volunteer, Carolyn Bruton, to provide small, home-made, food care packages to families or individuals that may just need a little help in their lives. Carolyn has been supported by the Lutterworth Fire and Rescue Service, who have offered their venue, the Lutterworth Local Area Coordinator and a number of local organisations and charities who have helped fund this work. If you know of someone who may benefit from this support, please contact Carolyn on 07969 268 154 or [Prettylittlecakesandbakes@gmail.com](mailto:Prettylittlecakesandbakes@gmail.com).



## Fraud, Scams and Cyber Crime Awareness

Between October 2017 and March 2018 there were over 300,000 crimes reported to Action Fraud, roughly 60% of reports were from businesses and 40% from individuals, a total of over £706 million had been stolen from victims. The estimated cost of fraud to the UK each year is £190bn. Action Fraud is the UK's national reporting centre for fraud and cybercrime, providing a point of contact for information, advice and support.

When cases are reported to them, they provide a police crime reference number and pass the report on to the National Fraud Intelligence Bureau for investigation. For more information, or to report fraud, scams or cyber crime, have a look at their [website](#).

### HOW TO STAY SAFE

Here are some simple precautions to take to ensure a safer browsing experience:<sup>[7]</sup>

<p><b>CONFIRM THE EXACT NETWORK NAME</b></p> <ul style="list-style-type: none"> <li>At a coffee shop? Ask the barista for the exact name of the network to ensure you are not connecting to a fake network.</li> </ul>	<p><b>TURN OFF AUTOMATIC SHARING/ WI-FI CONNECTING</b></p> <ul style="list-style-type: none"> <li>You might not even realize that you are connecting to an unsecure network if you have Wi-Fi automatically enabled.</li> <li>Turn Wi-Fi off when not in use.</li> </ul>
<p><b>USE ENCRYPTED WEBSITES</b></p> <ul style="list-style-type: none"> <li>When logging into websites, go to the encrypted version of the page. To get there, enter https:// before the site address (e.g. https://www.yoursite.com).<sup>[8]</sup></li> </ul>	<p><b>KEEP YOUR OPERATING SYSTEM AND SECURITY SOFTWARE UPDATED AT ALL TIMES</b></p> <ul style="list-style-type: none"> <li>This ensures that you have the latest security patches deployed to help protect against hackers.</li> </ul>
<p><b>AVOID ONLINE BANKING ON A PUBLIC NETWORK</b></p>	<p><b>ENSURE THAT YOUR FIREWALL IS TURNED ON</b></p> <ul style="list-style-type: none"> <li>This is your first line of defense against malicious intruders.</li> </ul>

Using public Wi-Fi can be a convenience in today's fast-paced world, but always follow security precautions to make sure you're surfing safely.

**Courier Fraud** - occurs when a fraudster contacts a victim by telephone claiming to be a police officer or bank official. The caller sounds plausible and may confirm your name and address, basic information which could be obtained easily. After they've gained the victim's trust, the fraudster will claim money has been withdrawn from the victim's account by staff in the bank, they will persuade victim's to visit their local bank, to remove a large sum of money from their account, and then they will send someone to collect money from the victim's home address.

In November a woman from Market Harborough was contacted by a man who claimed he was a police officer in London. The man stated he was investigating fraud at a major bank. The fraudster persuaded the victim to attend her local branch and a taxi was arranged to take her there. Fortunately the local taxi firm knew the victim and became suspicious. They helped the victim contact police and report the incident.

The police or banks would not contact people in this way.

If you get a call like this hang up.

If you have handed over any bank account details to the fraudster, call your bank and cancel your cards immediately.

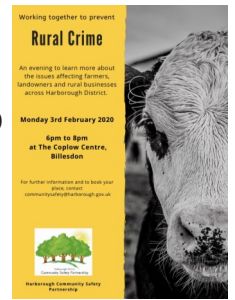
If you want to contact your bank, to check, or to cancel cards, do it from another telephone. If you don't have another telephone to use, call someone you know first to make sure the telephone line is open and not still connected to the fraudster.

Report any scams or phone calls like this to **Action Fraud**



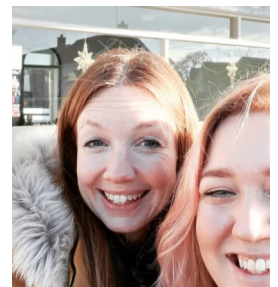
## Rural Crime Event

Harborough District Community Safety Partnership hosted their second Rural Crime event on 3rd February in Billesdon. We had speakers from Crimestoppers, Leicestershire Police and Datatag and an opportunity to ask the Waste team about flytipping. The food was brilliant, and the evening provided a great opportunity for networking and conversation. For more information about what was asked, please have a look at our [website](#) which will be updated shortly.



## Domestic Abuse Campaign Update

During November we visited 30 hairdressers, beauticians, a barbers and a tattooist across the district, sharing advice on recognising some physical and emotional signs of domestic abuse, how they can help support clients, questions to ask and where to refer their clients to for professional support. The campaign was really well received, with most hairdressers we spoke to saying they are confided to by clients, and that it is helpful to have knowledge of UAVA (United Against Violence and Abuse), the local domestic abuse service for Leicestershire. We also spoke to a survivor of domestic abuse who had been supported by UAVA. We plan to repeat the campaign in February, visiting further salons and barbers, having also received anecdotal advice from UAVA that referrals increased in December following our campaign. If you've been affected by domestic or sexual abuse, contact **UAVA**, the Leicestershire support service, on **0808 80 200 28**.





## Emergency Planning

It is really important for us all to have plans in place in case of an emergency situation arising. For the members of the community safety partnership, that involves helping the most vulnerable first, but for your home or business it could involve knowing where to pick up sandbags, having emergency numbers handy, and business continuity. Leicester,

Leicestershire and Rutland Resilience Forum have a [website](#) detailing their response to emergencies and also with lots of information with how you can prepare, either your home, family or businesses. You can also find out more in the [Emergency Planning pages on the Harborough District Council website](#).

## Secure Allotments Campaign

Springtime means many of us start venturing outside to tidy up gardens and start the growing season on an allotment. As mentioned previously, the Community Safety Partnership are organising a secure allotment campaign starting in February. We will be demonstrating the effectiveness of numerous locks against theft, and talking to allotment owners about improving site security. For more information, or to enquire about us attending a local club to deliver the information, please contact [communitysafety@harborough.gov.uk](mailto:communitysafety@harborough.gov.uk)

## Road Safety

Following on from the Annual Parish Liaison meeting, the Community Safety Team was asked to put together an information pack on what Parishes can do to improve road safety in their areas. Kay Aitken has produced the [downloadable pack](#), with direct links to relevant legislation and how to set up a Speed Watch or a Mobile Vehicle Activated Sign Scheme. For further information please contact the Community Safety Team at [communitysafety@harborough.gov.uk](mailto:communitysafety@harborough.gov.uk).



## Knife Crime

The Leicestershire Police 'Lives Not Knives' campaign aims to discourage people from picking up a knife in the first place, raising awareness of the dangers and consequences of doing so. One knife crime incident is one too many and support is available for both those who carry a knife or may be considering carrying a weapon, as well as anyone concerned about someone they suspect carries one. The CSP is hosting a Serious Youth Violence Network Event for professionals to tackle knife crime on Tuesday 25th February. For more information, or support and advice, have a look at the [Leicestershire police website](#).



## Photo and News Opportunities

The front page photo is of flooding in fields near Great Glen, taken in December. If you have photos or news from around the Harborough District that you would like to have featured in the quarterly parish e-newsletter, please submit them by end of April 2020 to [r.woods@harborough.gov.uk](mailto:r.woods@harborough.gov.uk).

Harborough District Council  
The Symington Building  
Adam and Eve Street  
Market Harborough  
LE16 7AG

Phone: 01858 828282  
E-mail: [communitysafety@harborough.gov.uk](mailto:communitysafety@harborough.gov.uk)

 @HarbCSP

 [Facebook.com/HDCSP](https://www.facebook.com/HDCSP)



Harborough District  
Community Safety Partnership

Keeping Harborough District Safer Together