



Three Year Partnership Plan 2023-2026 Keeping Harborough Safer Together

Introduction

This document outlines the over arching priorities that the Harborough District Community Safety Partnership (CSP) will tackle for the 2023/26 period.

The Plan explains what the CSP is and why partnership working is essential in making Harborough District a safe place for everyone to live, work and visit. The document explains progress so far in tackling crime, disorder and the related community safety issues. In addition how we have involved all parts of the community in our work and how we have set the new priorities.

These priorities will be reviewed on a yearly basis.

What is the Community Safety Partnership?

The CSP was set up under [Sections 5-7 of the Crime & Disorder Act 1998](#) and is made up of statutory services who need to work together to protect our local communities from crime and to help people feel safer. Core membership will comprise of Responsible Authorities with a statutory duty under Crime & Disorder Legislation. These are;

- Harborough District Council
- Leicestershire County Council
- Leicestershire Police Crime Commissioner
- Leicestershire Police
- Leicestershire Fire & Rescue Service
- Leicester, Leicestershire & Rutland Integrated Care Board
- The Probation Service

They work out how to deal with local issues like antisocial behavior, protecting victims and reducing reoffending. They annually assess local crime priorities and consult partners and the local community about how to deal with them.

Partnership Strategic Assessment

The Partnership Strategic Assessment is a statutory document produced annually to inform Community Safety Partnerships about crime, disorder and community safety issues in their area. The aim of the Strategic assessment is to provide Harborough Community Safety Partnership with a comprehensive analysis of crime, disorder and community safety issues to enable the partnership to review, modify or change their priorities.

Alongside the analysis of crime and disorder figures we also consult with our Parishes and Communities.

Key Findings of 2023 Strategic Assessment

Crime:

In the year ending March 2022, the crime rate in Harborough was about the same as the average crime rate across similar areas (rates per 1000), it was also the lowest rate in Leicestershire, just above Rutland.

By end of Quarter 2 (September 2022) although the total crime rate had increased it was still the lowest rate across Leicestershire and was similar to Quarter 2 figure pre covid in 2019.

At the end of Quarter 3 the volume of crime had risen slightly by 6.6% year to date to December 2022. Acquisitive crime had risen across the board, this has been rising steadily since its dramatic drop during Covid, but still remains below pre-covid levels. The main rise in volume crime is violence with injury.

The beat of Harborough North (Great Glen, Kibworth, Thurnby, Scruptoft area) experienced the most crimes during the current year to date (YTD) (April – December 2022). This is also the largest beat area geographically.

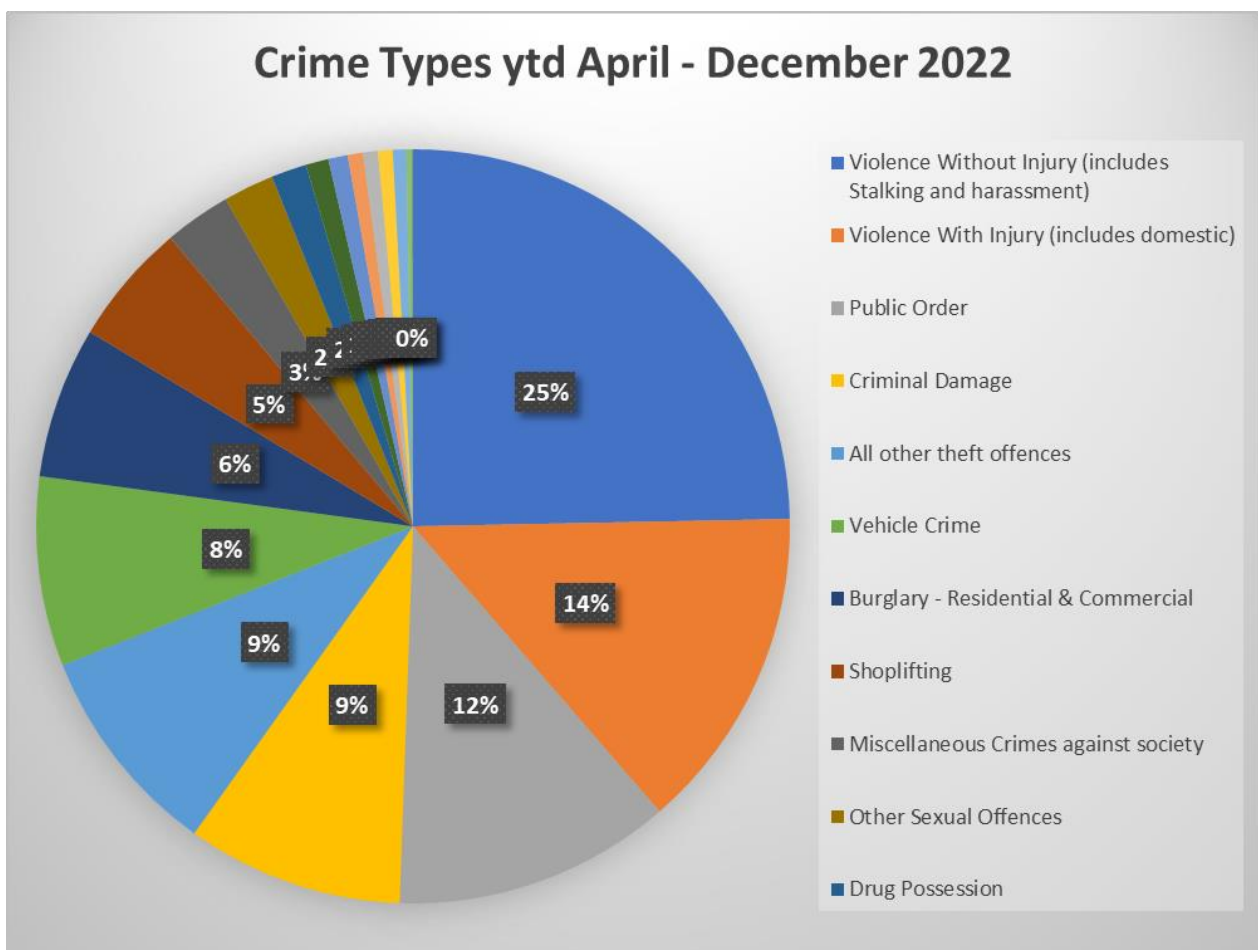
Top Three crimes as at end Quarter 3:

Violence Without Injury (includes stalking and harassment)

Violence with injury

Public Order offences

Violence figures include domestic abuse offences which are a large proportion of the incidents.



Serious Violence (Violence Reduction Network - VRN definition does not include Domestic Violence - DV)

Serious Violence Crime incidents are low in the Harborough District representing around 5.5% of incidents across LLR. The majority, 91.5% of these are assault with injury followed by 3.8% robbery of personal property and 2.5% assault with serious harm.

Although low figures have increased from 2021/22 from 219 to 236 for 2022/23. There was a peak between September and November. (Figures as at January 2023)

Anti-Social Behaviour - ASB:

ASB incidents have continued to decrease with rates below pre-covid levels. However, the perception of ASB is that it is increasing. Communication and engagement around ASB will to be included in the new action plan.

All ASB incidents in Harborough have seen a significant decrease in the current YTD to December 2022.

There has been a -33.4% decrease in the number of ASB incidents in Harborough in the Current YTD to December 2022, compared to the previous YTD

The Harborough Town and Harborough North beats have both recorded the most incidents in the current YTD

Domestic Abuse:

Domestic crime and incidents for Harborough have shown a steady increase since Q1 2018/19 rising from 7.3 to 12.9 per 1000 population in Q2 2022. Domestic Violence with injury has also risen over the same period but has remained level at around 2.8 per 1000 for the last 5 quarters. There is an overall increase of 18.5% year to date, for all offences and incidents to September 2022.

The number of police domestic incidents recorded from April -December 2022 has seen a small decrease of -2.7% from the previous YTD. The Harborough North beat had the highest number of domestic incidents in the YTD. The majority of domestic incidents recorded occurred in a dwelling and were violence without injury offences.

Road Safety:

Road traffic collisions recorded by Leicestershire Fire and Rescue Service for the first three quarters of this year are up on the previous year to date from 64 to 77, this was mainly due to a peak of incidents in October 2022. Largest number of incidents are in the Misterton Ward, followed by Kibworth, Lutterworth East and Billesdon and Tilton. (M1, A5, A4304, A6, A47) Harborough had 4 offence(s) for death or serious injury caused by unlawful driving recorded in 2022 Q2 (rolling 12 months ending September 2022), this is the highest rate when tabled against our Experian Mosaic near neighbours.

HATE:

In the recent VRN Survey 64.6% of respondents agreed that “your local area is a place where people from different backgrounds get on well together” – this was up from 61% in 2019. For the same question in Leicestershire Insight Survey this was down to 86% in Qtr 2 from 89% in Qtr 2 in 21/22.

The number of flagged hate crimes has seen a decrease in the current YTD to December 2022, when compared to the same time period of the previous YTD (down 8). Public Disorder offences

and Violence Without Injury offences are the two crime types that have the most incidents flagged as hate crime. There has been a significant increase of +28% in the number of hate crime incidents that are Violence with Injury offences. The Harborough North beat has recorded the most hate crimes in the current YTD.

However, rolling 12 month data to September 2022 shows a small increase of 9 “all hate Crime and offences” ytd of 8.2% to 119. the majority of the incidents are racial 43.9% with the next largest category being sexual orientation at 29.5%.

Community Consultation

Below is a summary of a several consultations that were used to help shape this Three Year Plan.

Violence Reduction Network Community Safety Survey – Autumn 2022

This survey was last completed in 2020, in 2022 numbers answering the survey was down from 416 to 214 so this should be taken into account. There was a slight decrease in feelings of safety during the day and night, and a slight increase in those that felt ASB and crime was a problem in their areas despite the fact that ASB figures continue to decrease.

However, there was also a decrease in those that felt ASB and Crime was more of a problem than the year before. Of those that had witnessed ASB the main age groups involved were between 10-20 years of age.

The main ASB witnessed or experienced was fly tipping followed by vandalism, both up on the last survey. Drunk and rowdy behaviour was down on 2020.

The main crimes experienced or witnessed were vehicle crime up nearly 20% from 2020 followed by rural crime. There was a slight increase in percentage of those who had been a victim of crime and an increase in those that did who then reported to the police.

Leicestershire Community Insight Survey September 2022 – Harborough results

77% agree that “ASB has decreased or stayed the same” this is down from 94% at same time last year (Sept 2021) and has steadily been decreasing from that point.

80% feel safe outside in their local area after dark – this has dropped from 81% last year. However, this is still the second highest percentage in Leicestershire after Hinckley and Bosworth.

Police survey – Neighbourhood Link -Autumn 2022

Top concerns for Harborough District in current financial year:

ASB

Road Safety

Drug Dealing and Drug Taking

And to a lesser extent House Burglary and Vehicle Crime.

Top concern for rural communities was ASB. Drug Taking and Drug dealing more of a concern in more urban areas.

Parish Council Consultation - December 2022

Top three concerns were Road Safety, Acquisitive Crime and Antisocial behaviour.

Within Road Safety – biggest concern was around speeding followed by awareness of cyclists and horse riders.

Within Acquisitive Crime - top concerns were Thefts from Farms and outbuildings, Heritage Crime (includes theft of lead from churches) and cybercrime/online fraud

Within ASB – biggest concerns were Criminal Damage, threatening and abuse behaviour and noisy neighbours and vandalism.

Other Considerations

Office of the Police and Crime Commissioner. (OPCC)

In 2012 Police Authorities were replaced with an elected Police and Crime Commissioner, they with partners set the strategic direction for community safety and criminal justice in order to reduce crime and the fear of crime locally. PCC's and CSPs have a duty to consider each others plan.

The priorities of the OPCC 2021-2024:

- responding to rural criminality and wildlife crime, with police in rural areas working with rural crime teams.
- Business crime and rural crime
- Reduction of violent crime including knife crime
- Tackling domestic abuse including changing of offender behaviour
- Night time economy strategy to drive down violence
- Safer communities with officers working in schools and youth clubs etc
- Use of communities through Neighbourhood watch, Speed watch etc
- Serious Violence reduction through VRN

Link to plan:

[LPCC Police and Crime Plan 2021-2024](#)

Statutory duties -

Partnership activity has been a duty under the Crime and Disorder Act since 1998 – Section 17 of that Act imposes a duty on a number of responsible authorities to work together to tackle local crime and disorder. It was amended in 2006 with the Police and Justice Act, a duty was placed on the partnerships to join together in a formal strategic group to undertake frequent strategic assessments of levels and patterns of crime and drug misuse in their area and to produce annual rolling three year community safety plans.

Amendments were also made in 2014 with the ASB, Crime and Policing Act. During this time the following duties have been added to the original Act –

The responsible authorities for a local government area shall, formulate and implement;

- a strategy for the reduction of crime and disorder in the area (including anti-social and other behaviour adversely affecting the local environment);
- a strategy for combatting the misuse of drugs, alcohol and other substances in the area
- a strategy for the reduction of re-offending in the area
- a strategy for preventing people from becoming involved in serious violence in the area, and reducing instances of serious violence in the area.

Serious Violent Crime

Most recent addition is the new statutory duty amending section 6 of the Crime and Disorder Act 1998, ensuring preventing and reducing serious violence is a priority for Community Safety Partnerships (CSPs).

In the next three years we will be working with the Leicester, Leicestershire and Rutland Violence Reduction Network to tackle violent crime using a public health approach, making sure we work closely with local agencies at a prevention level to keep our serious violent crime levels low.

Public Health Approach to Violence

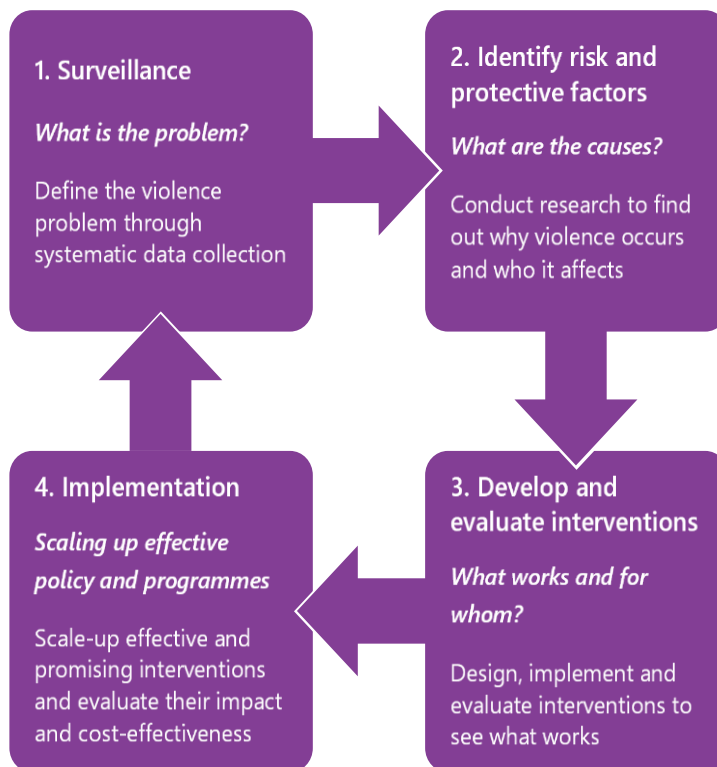
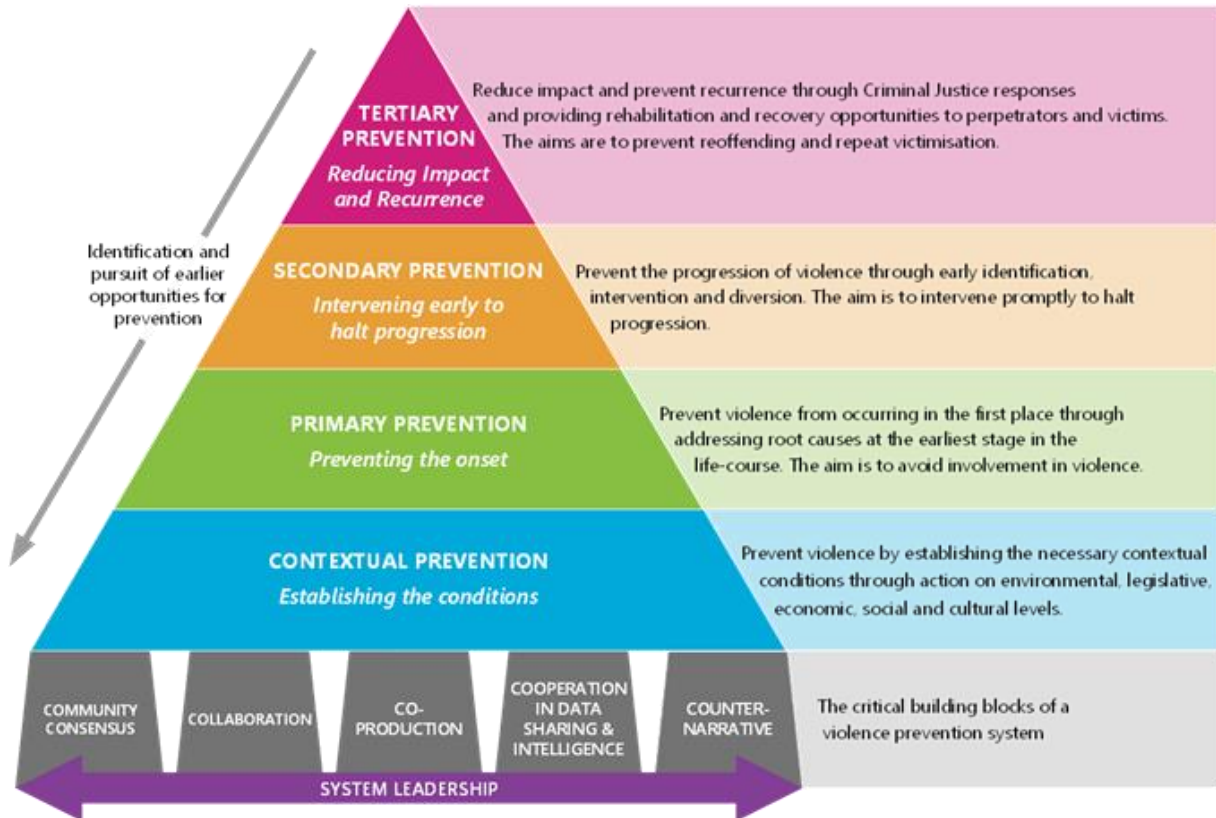


Figure 1 - The four steps of a public health approach to violence prevention (WHO),

A Place-based, Whole System Framework for Violence Prevention



Based on PHE (2019) "A whole system multi-agency approach to serious violence prevention"

Co-ordinating Domestic Violence homicide reviews

The requirement for Community Safety Partnerships to conduct Domestic Homicide Reviews came into effect on 13th April 2011 as a result of the Domestic Violence, Crime and Victims Act (2004).

Prevent (Part of Contest Strategy)

The Prevent Duty requires all local authorities to utilise the local Counter Terrorism Local Profile (CTLP) to inform a robust assessment of the risks of radicalisation in the local area and produce a proportionate partnership action plan to tackle these risks.

We will also to work together to tackle specific issues such as such as **County lines** and **Modern Slavery**.

The term County Lines describes gangs and organised criminal networks involved in exporting illegal drugs into other areas of the country, often small towns, using dedicated mobile phone lines or another form of 'deal line' which can be a person. They are likely to exploit children or vulnerable adults to move and store the drugs and money and will often use coercion, intimidation, violence (including sexual violence) and weapons to achieve this. We will continue to work to with our partners to understand the local risks and take actions to reduce these vulnerabilities, through our Joint Action Group and our Action Plan

Our Priorities for 2023-2026:

Looking at all of the statistical and anecdotal evidence we have agreed to work on the three main areas below as our priorities for the next three years. These will be reviewed on a yearly basis and a grant from the Office of the Police and Crime Commissioner (OPCC) be used to fund an Action Plan to deliver these priorities.

As Partners our core work will also remain, and emerging issues will be dealt with through our Joint Action Group and other partnership initiatives.

People

Understanding underlying causes of violence and coercive behaviour to provide support and interventions for the Community (vulnerable individuals and families.)

Focussing on:

Domestic Abuse
Serious Violent Crime
Exploitation*

**Exploitation includes all types of grooming including– CSE, County Lines and Radicalisation.*

Places

Working with communities to reduce incidents by utilising available powers and resources in a targeted way.

Focussing on:

Road safety - Fatal Four
Anti-social behaviour
Public order incidents

Property

To help support and advise our communities on taking personal responsibility, by promoting good practices and using partnership resources to reduce acquisitive crime.

Focusing on:

Rural Crime
Vehicle Crime
Domestic burglary
Financial Fraud and scams

Cross cutting priorities

- To prevent and raise awareness of the effects of substance misuse
- To increase Community Engagement across the District with all partners and using various forms of engagement
- Encourage the legitimate sharing of information between agencies.

How will we achieve these priorities?

- We will develop a yearly Action Plan which sets out how we will deliver on our priorities and is linked to our current resources.
- We will work to understand the issues within the district to ensure our action plans reflect our needs. This will be reviewed annually to take account of resources and any emerging threats during the three-year plan period.
- We will develop a communication and engagement plan to work with all our stakeholders. – including Parish Councils, partner agencies and directly with residents.
- Working closely with the Integrated Care Board and Public Health, we will strengthen partnership working and ensure we maximise the health and wellbeing of the population of Harborough.
- Turning Point -our Substance misuse Service- will aim to increase both aftercare recovery interventions and provide a more enhanced clinic service within the district.
- Progress and development will be monitored through Community Safety Partnership Strategy Group meetings chaired by the lead Harborough District Councillor for Community Safety.
- We will communicate our successes and continue to improve how we engage with our communities to enable us to target our resources around emerging issues.

A link to the full action plan plus news updates and campaigns can be found here www.harborough.gov.uk/communitysafety

For more information contact:

Community Safety Team

Harborough District Council

E: communitysafety@harborough.gov.uk