

The Town & Country Planning
(Inquiries Procedure) (England) Rules 2000

Appeal by Ministry of Justice
against refusal of planning application by
Harborough District Council

Proposal:
Outline planning application (All Matters
Reserved except for means of access and scale)
for the construction of a new Category B prison
of up to 82,555sqm within a secure perimeter
fence, together with access, parking,
landscaping and associated engineering works.

At:
Lane adjacent to Her Majesty's Prison,
Welland Avenue, Gartree, Leicestershire

Proof of Evidence of:
Simon James Neesam

On behalf of:
Harborough District Council

6th September 2022

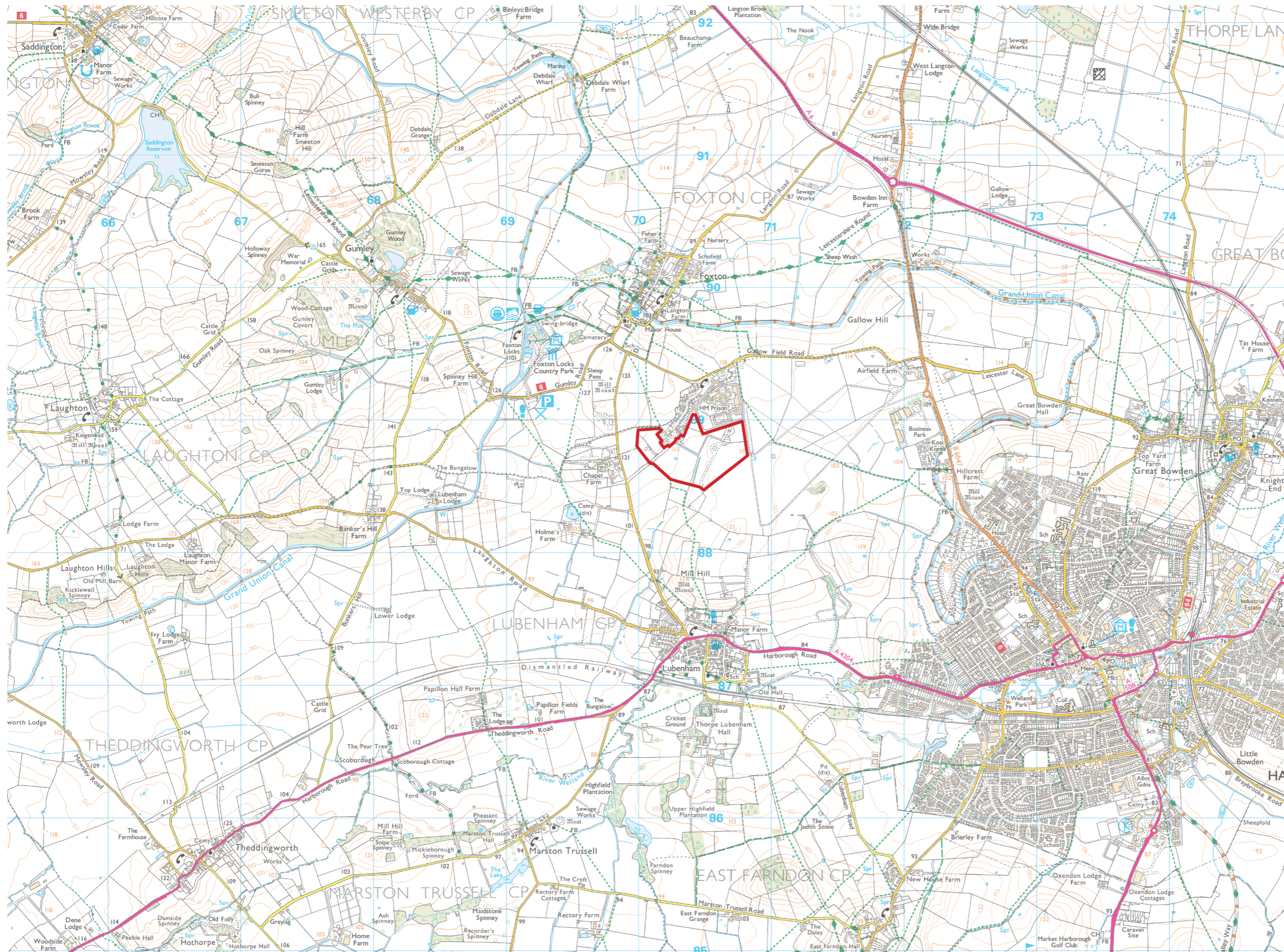
Appendix SJN 04: Figures and Photographs

Planning Inspectorate Reference:

APP/F2415/W/22/3300227

Local Planning Authority Reference:

21/01600/OUT



Key

 Site boundary

E22843 HM Prison, Gartree,
Leicestershire
Site location

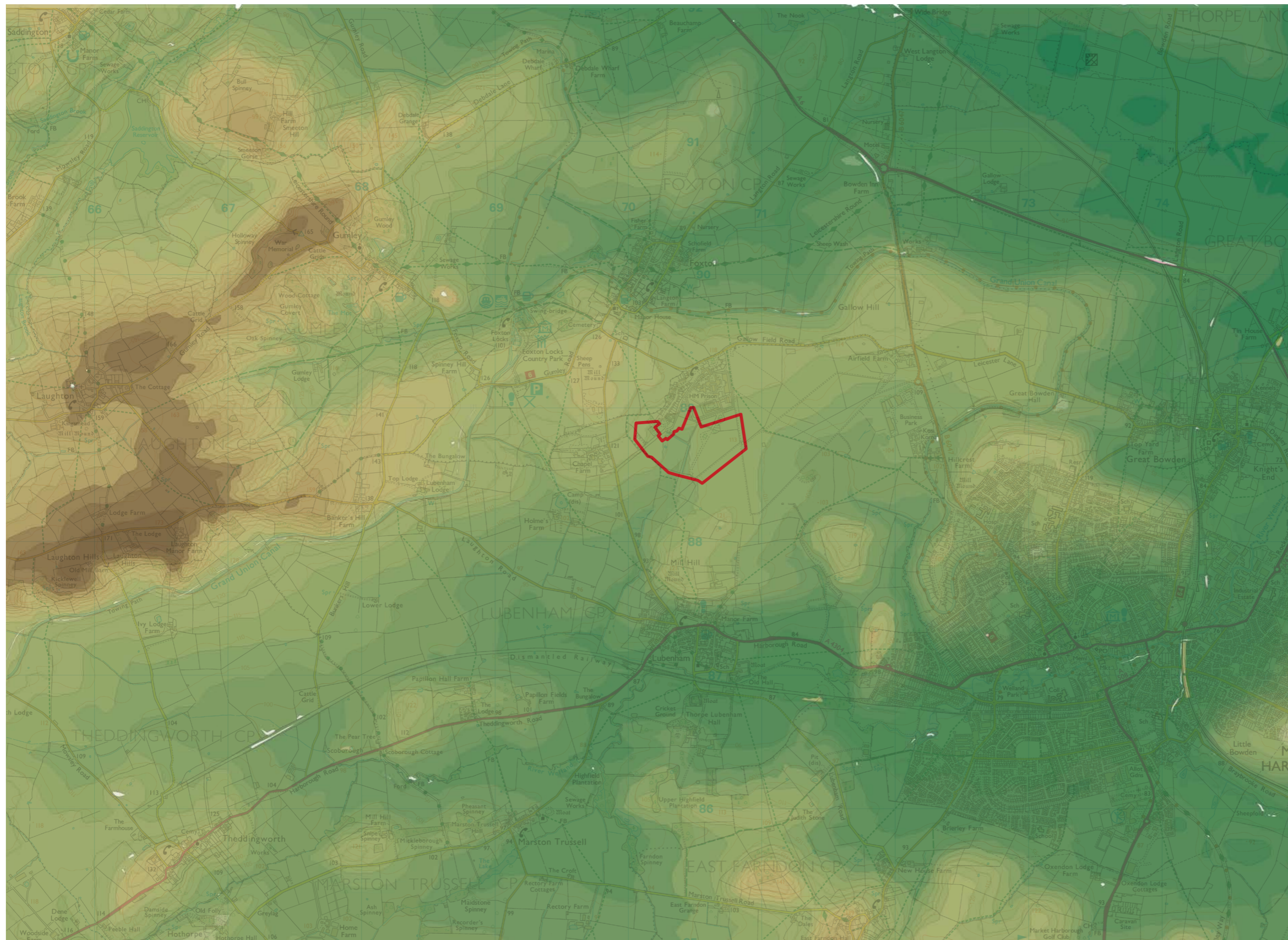
Figure 01

Scale: 1:30,000 @ A3



September 2022

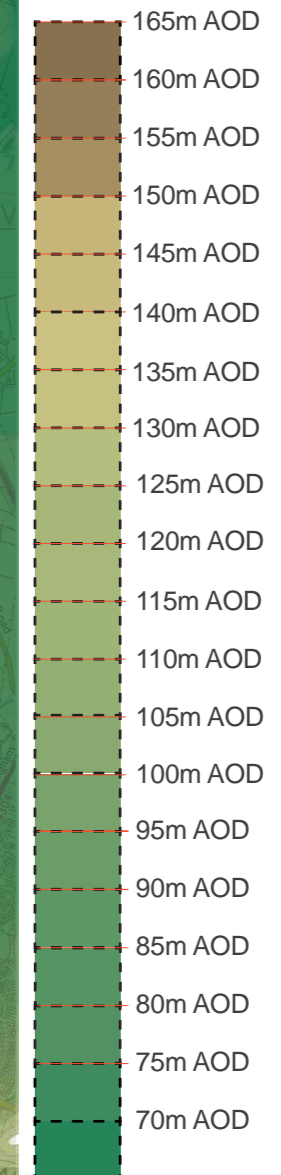




Key

 Site boundary

Elevation



E22843 HM Prison, Gartree,
Leicestershire
Topography

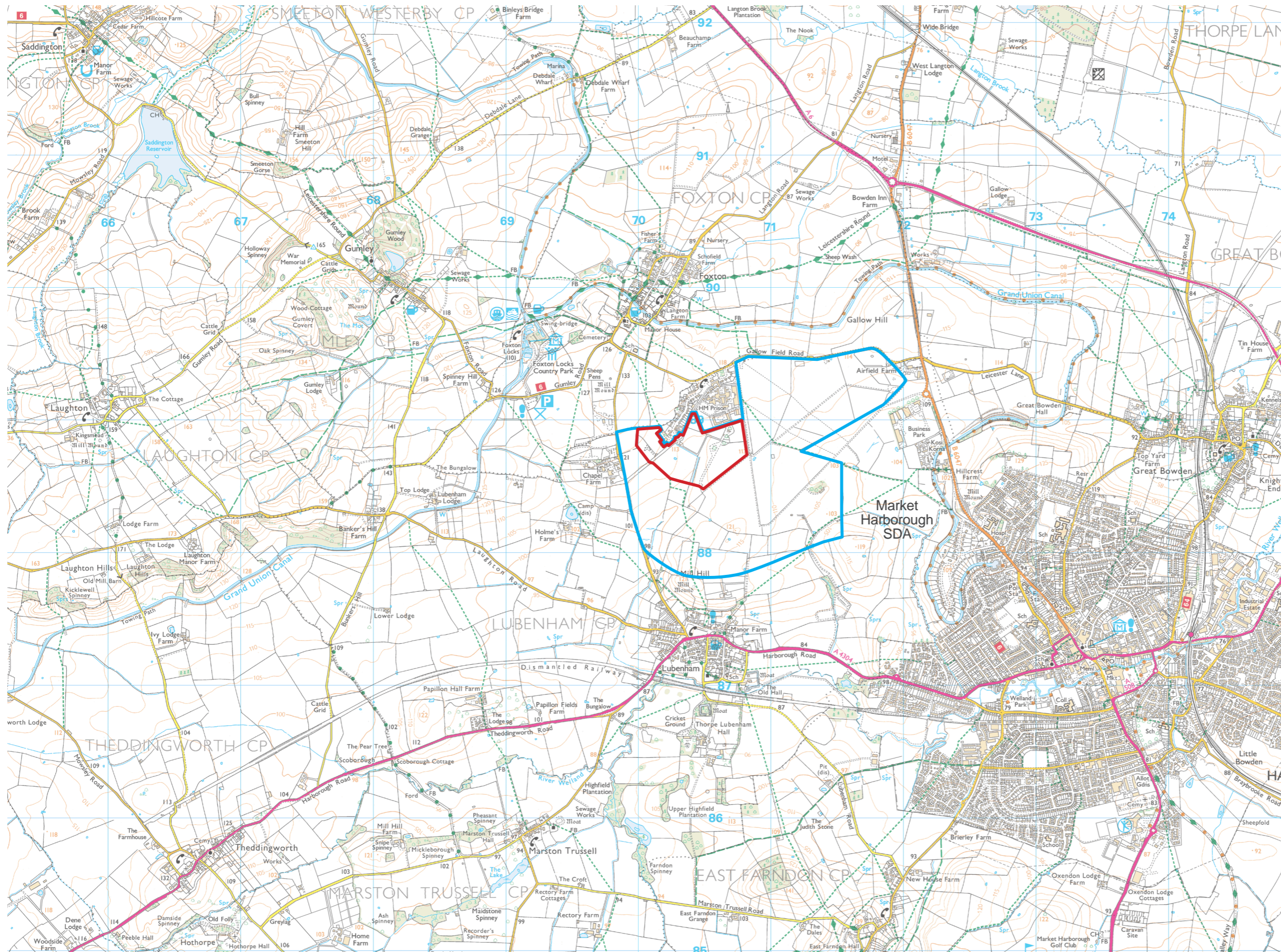
Figure 02

Scale: 1:30,000 @ A3



September 2022





Key

- Site boundary
- Local Landscape Character Area

E22843 HM Prison, Gartree,
Leicestershire
Landscape character

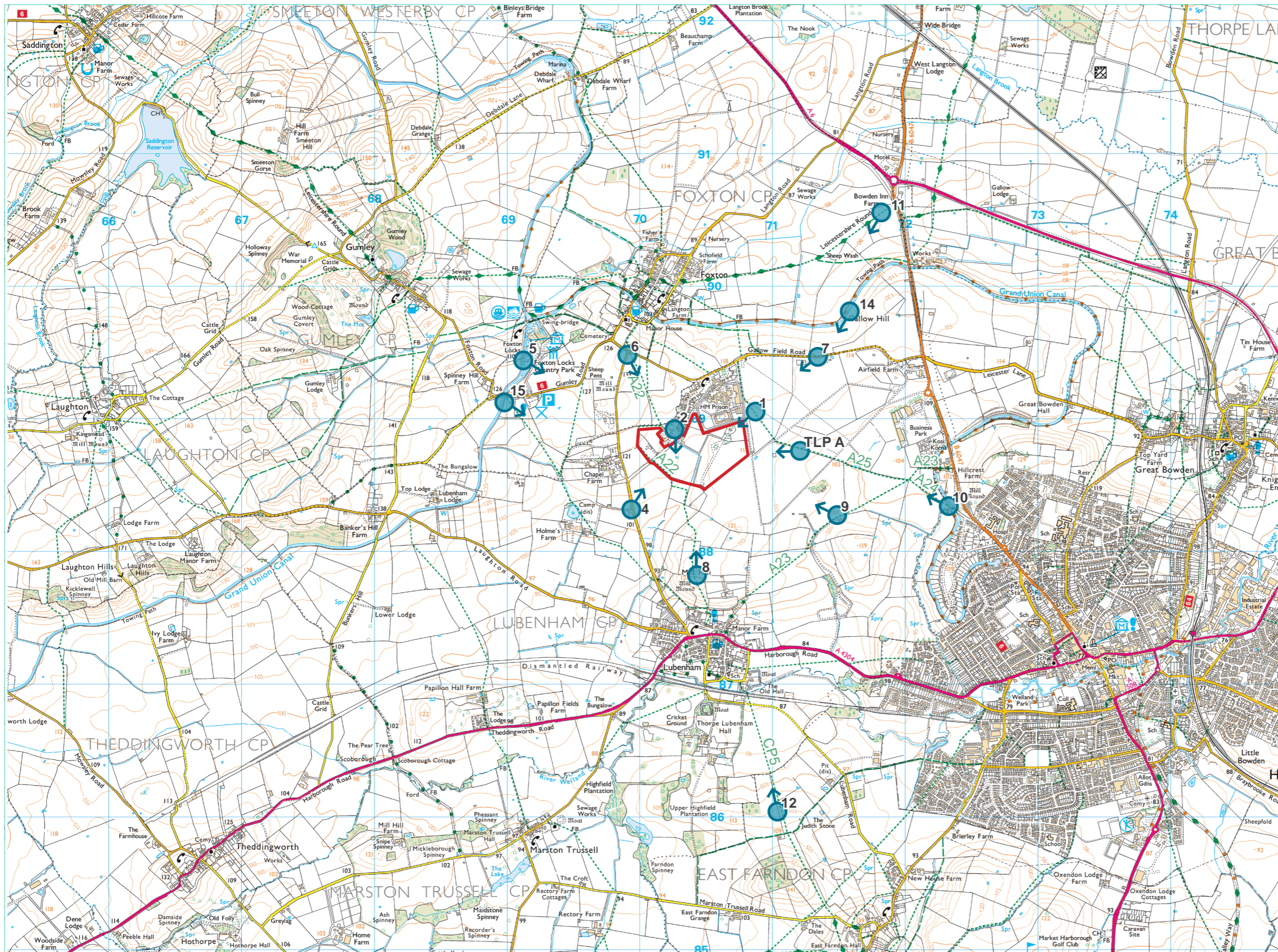
Figure 03

Scale: 1:30,000 @ A3





September 2022





Key

-  Site boundary
-  Viewpoint location

E22843 HM Prison, Gartree,
Leicestershire
Viewpoint locations

Figure 04a

Scale: 1:30,000 @ A3



September 2022





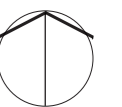
Key

- Site boundary
- 📍 Viewpoint location

E22843 HM Prison, Gartree,
Leicestershire
Close-distance viewpoint locations

Figure 04b

Scale: NTS



September 2022

