



# MEDBOURNE NEIGHBOURHOOD PLAN

Referendum Version - May 2018

## CONSULTATION STATEMENT

### Appendix CS-4

### Open Event (1) Analysis

hyperlinked from main document  
NP Consultation Statement

[CLICK HERE TO RETURN](#)



# MEDBOURNE NEIGHBOURHOOD PLAN

COMMUNITY ENGAGEMENT DROP-IN EVENT

18 JUNE 2016

CONSULTATION ANALYSIS



# CONTENTS

<b>Heading</b>	<b>Page Number</b>
<b>1. Background</b>	<b>3</b>
a. Project brief	3
b. Publicity	3
c. Attendees	3
<b>2. Format of Event</b>	<b>4</b>
a. Process on the day	4
b. Display Boards	5
<b>3. Results</b>	
a. Housing	6
b. Open Spaces and Environment	6
c. Design	7
d. Transport	8
e. Community facilities	9
f. Employment	9
g. Anything else?	10
<b>4. Summary</b>	<b>10</b>

# 1. Background

## a) Project Brief

Yourlocale was commissioned by Medbourne Parish Council to assist the Medbourne Neighbourhood Plan Advisory Committee (MNPAC) in the delivery of a drop-in event on Neighbourhood Planning on 18 June 2016. The event took place between 9:00 am and 1:00 pm at the Village Hall.

The aim of this event was to help engage the community in the development of the Neighbourhood Plan and to seek comments on the emerging topics – including Local Green Space and environment; community facilities and amenities; housing and design; and employment. It was hoped that interest would be generated amongst the community for involvement in the Theme Group process which is to be established in the coming weeks to consider the detail of the Neighbourhood Plan.

## b) Publicity

The drop-in event was promoted in a variety of ways:

- Advertised in the Parish Magazine
- Leaflets were produced promoting the event and delivered to each household.
- Posters were placed prominently around the Village
- Members of the MNPAC spoke to villagers to inform them of the event and to encourage attendance.
- Information was emailed to everyone on the Medbourne Village email list.
- Information was posted on the Neighbourhood Plan pages of the village website

## c) List of attendees

A list of attendees is available separately.

50 people attended the event



## 2. Format of Event

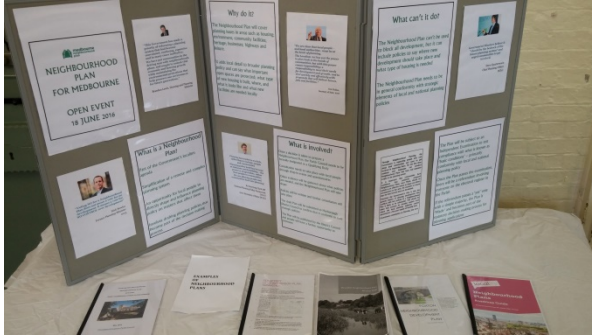
### a) Process on the day

Sign in	Members of the MNPAC welcomed attendees on arrival and asked them to complete a contact sheet to record attendance. The arrangements for the Open event were explained.
Background	The first displays introduced Neighbourhood Planning and described the process that is being followed by MNPAC on behalf of the Medbourne Parish Council. Copies of explanatory booklets were available on the display stands.
Information	<p>Copies of finalised Neighbourhood Plans were available for people to read as they walked around the displays.</p> <p>Large maps of the Parish were available within the room showing aspects such as flood risk; heritage assets etc.</p> <p>A rolling video was available to view providing further information about Neighbourhood Planning and explain what has been undertaken to date within Medbourne.</p>
Consultation on key issues	<p>A series of display boards were spread across the room, each of which focused on a different topic related to planning and development, including:</p> <ul style="list-style-type: none"> <li>▪ Housing –housing mix, design and heritage</li> <li>▪ Environment – existing designations and Local Green Space criteria</li> <li>▪ Transport</li> <li>▪ Businesses and Employment</li> <li>▪ Community Facilities and amenities</li> </ul> <p>Having read the displays, attendees were asked to comment on each topic using post-it notes and to place them on flip-chart paper alongside each display.</p> <p>Opportunities were available for children to contribute through drawing</p>
Visual maps	<p>A large map of the Parish was available and people were invited to place up to 3 blue dots on areas of recreation and up to 3 green dots in places enjoying good views.</p> <p>A further map offered participants the opportunity to mark areas within the Parish that they wish to see protected from development and areas that may be suitable for development.</p>

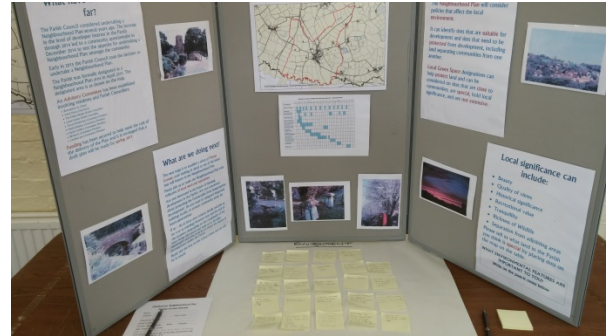


## b) Display Boards

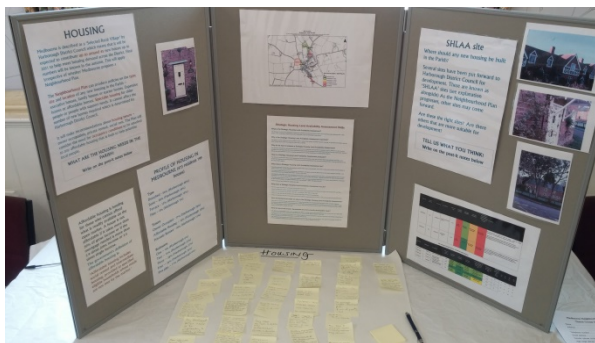
### General



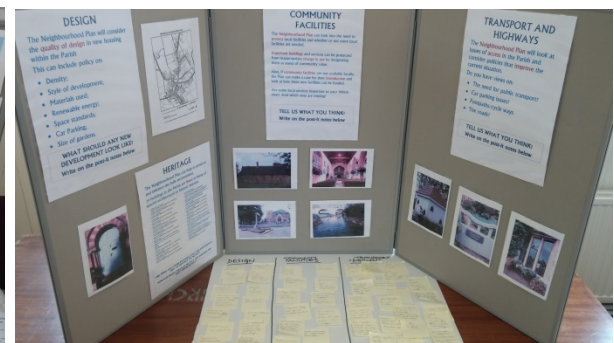
### What have we done so far?



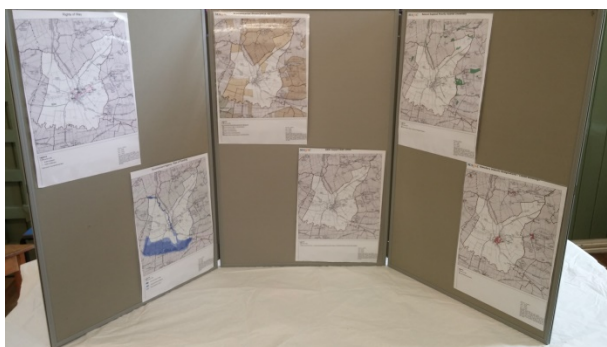
### Housing



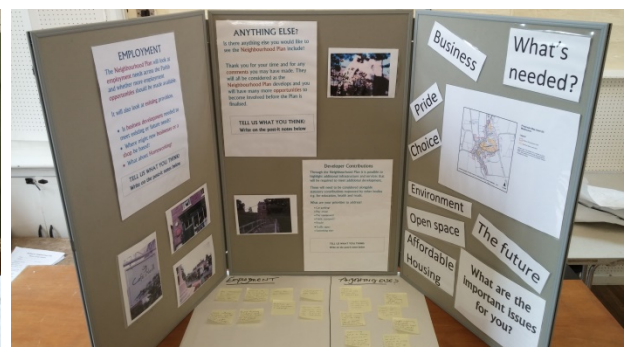
### Community facilities etc.



### Environment



### Anything else?



### 3. Results

The following comments were recorded from post-it notes written by people who attended the open event. All will be considered as the Neighbourhood Plan progresses but may not feature in the final document.

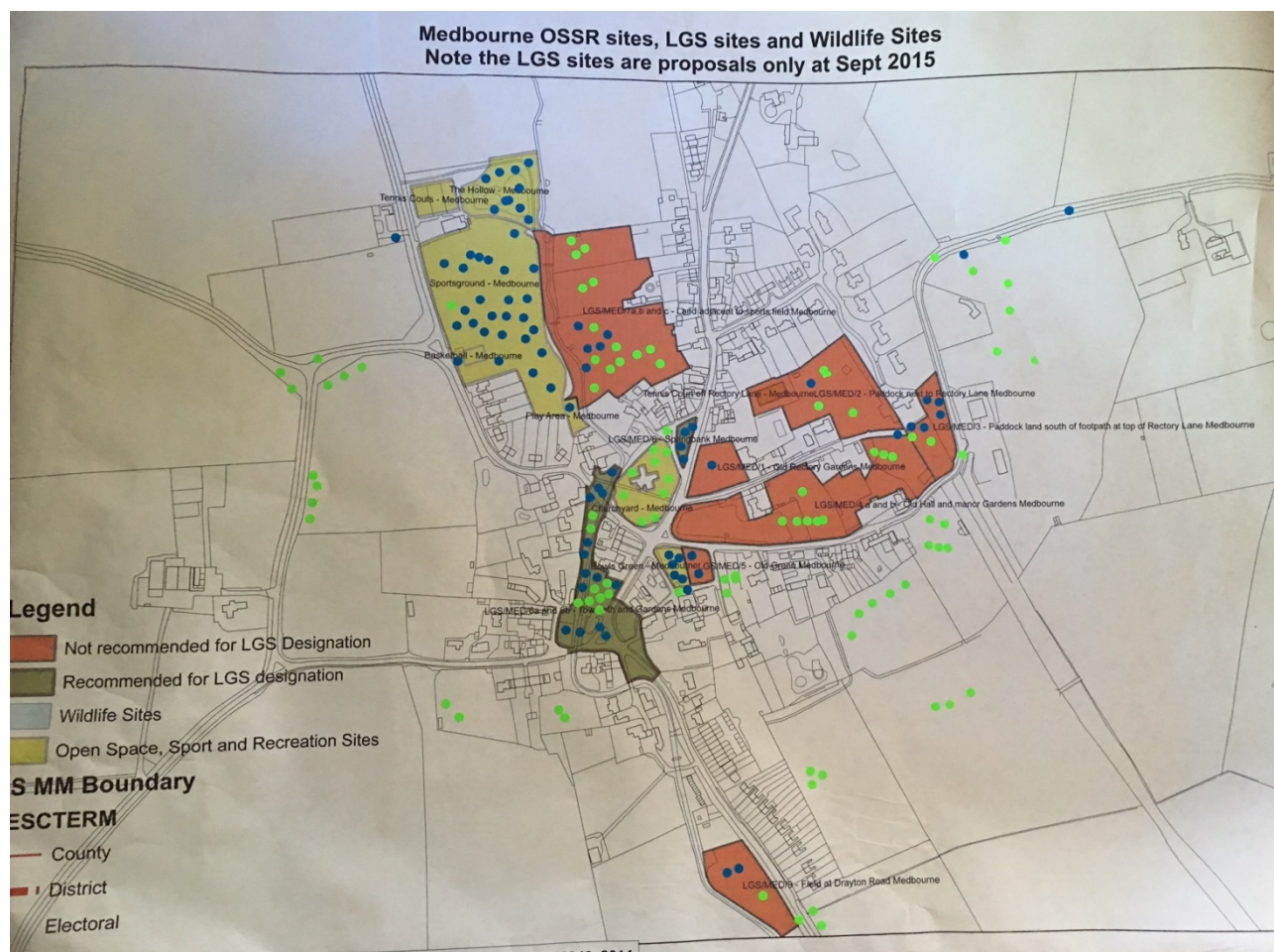
Housing
Comments

- Smaller houses++++
- In small developments++++
- In keeping with village +++
- Affordable for younger people and older to downsize ++
- Families need to grow so larger houses should also be considered
- Rentable cottages, small houses/semis, no gated communities, no large developments
- Well designed with off road car parking
- Good mix starter homes and family homes
- Sympathetic build and materials
- No 3 storey housing
- Small infill developments on suitable sites
- Terrace cottage style
- New homes to incorporate eco-friendly materials, energy efficient.
- Mix of building styles to blend with existing properties

Open Space and Environment
Comments

- More dog waste bins
- More litter bins
- Enhance Surroundings of river Welland through village
- Protect green spaces xxx
- Protect local views, across Welland Valley, from Payne's Lane
- No development on flood plain
- Benches
- " trees, benches, breathing space"
- Protect public rights of way
- Allotments?
- Wildlife corridor along disused railway line

People were asked to place up to 3 green dots in an area with good views and up to 3 blue dots in areas valued for recreation. These were the results. The environmental designations shown were for information only.

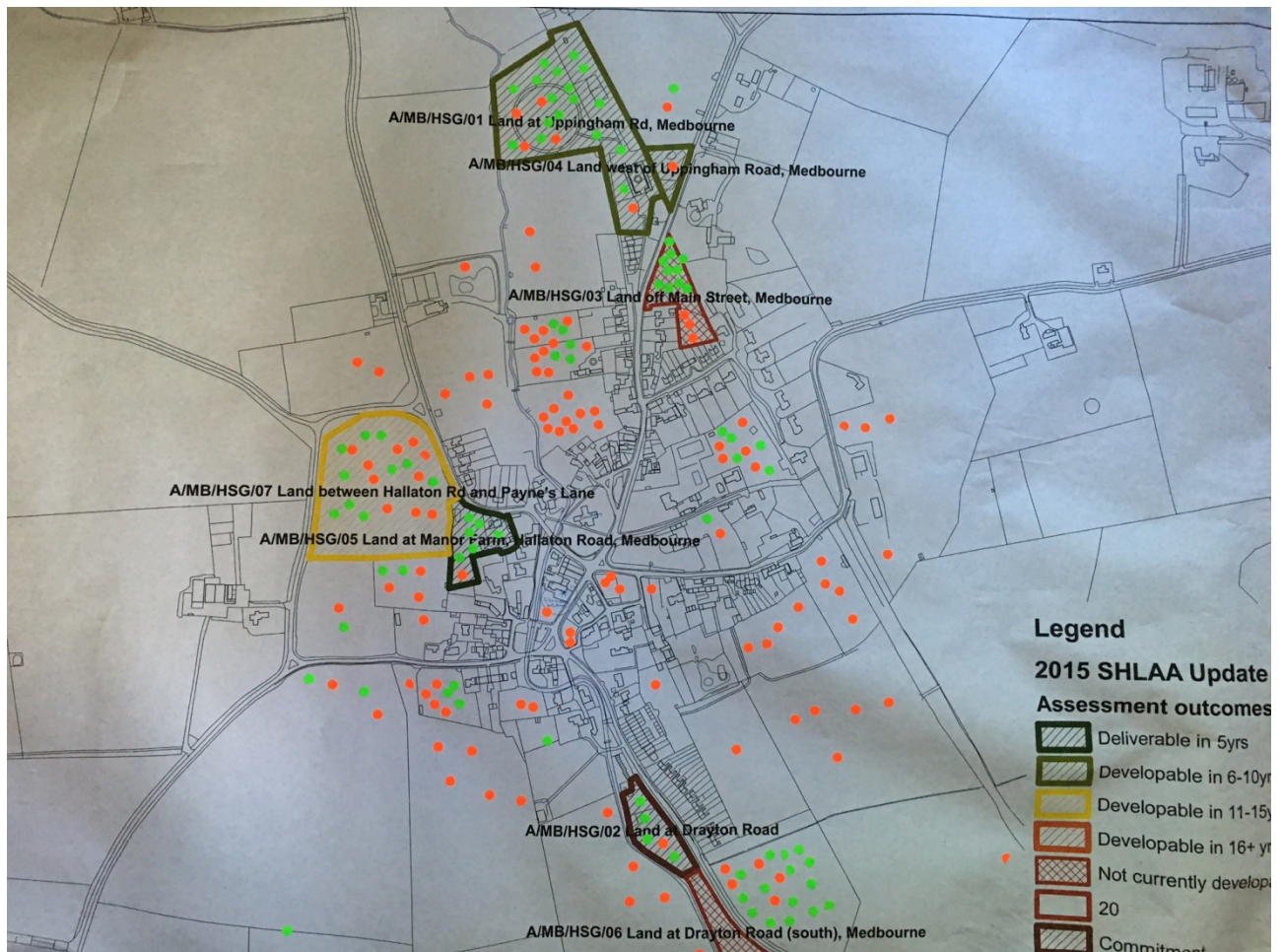


Design
Comments

- Renewable energy
- Sympathetic design and materials
- More modern designs
- In keeping with village, small properties
- No wind turbines, solar panels
- Stone & thatch
- No windfarms
- Local traditional material

People were asked to place a green dot in areas deemed suitable for housing and an orange dot where housing was not considered appropriate. The backdrop to the map was the existing Strategic Housing Land Availability Assessment (SHLAA) sites provided by Harborough District Council.





<b>Transport</b>
<b>Comments</b>

- Bus services
- Parking
- Dog friendly stiles
- Signs (illuminated) entering village
- Some community transport facility needed
- Speed cameras
- Make sure footpaths are well signposted and kept clear
- Footpath along Payne's Lane to form a loop walk
- Two off road car parking spaces per house minimum
- No speed bumps - "natural traffic calming"
- Reroute heavy farm machinery down Uppingham Rd to avoid further damage to Manor/Holt Rd
- Speed restriction
- Cycle ways
- Timely repair potholes

- Sort drainage
- More footpaths & cycle routes
- Grass verges to be kept tidy
- Local bus service to station in Harborough
- Traffic calming +
- Speed monitoring signs on main routes into village +
- Regular bus services +
- Wild flower planting bulb planting
- Leaf sweeping
- Better quality road surfacing
- Improve rural transport bus/taxi

## Community Facilities and amenities

### Comments

- Shop, pub, village hall, sports ground, bowling green + + + +
- Better mobile phone signal
- Community access to old railway line leading up to flood defence area
- Allotments ++
- Medical & healthcare facilities – not just a nurse led surgery
- Village hall, use it or lose it
- Larger premises for village shop/post office

## Employment

### Comments

- An infrastructure to provide employment.
- Local Facilities rather than having to locate outside the village.
- Local village business network and events.
- Links with local colleges and universities.
- Parking to be considered with larger vehicles passing through the village making dangerous situations.
- Innovation Centre.
- Designated land for small offices or workshops for tradesmen.
- Incentives for local businesses and enterprises.
- Car parking must be a consideration.
- Public Transport.
- Rural business incubator and innovation centre for design and craft based businesses.
- Working from home encouraged.

## Anything else?

### Comments

- Motorbikes!
- Main Street – traffic calming needed.
- Cars also!
- Community event to sweep ALL the pavements.
- The cuts mean the Council can't so we should take pride in our village.
- Given our history, a small museum within the village hall.
- Traffic calming on Drayton Road and Ashley Road.
- Use of disused railway line as footpath / bridleway.
- Heritage boards?
- Traffic calming on all roads in and out of the village.
- Speed signs
- Support for older people (groups etc.)
- Wi-Fi in the village hall
- Traffic calming and speed awareness signs on all roads into village. Designated car park on outskirts of village to take some parked cars off the roadside.
- Benches

## 4. Summary of findings

Comments were made which reflected a range of opinions. However, attendees demonstrated a consistency of opinion in a number of key areas:

### Housing

This section generated a large number of responses and reflected strong support for smaller houses in small developments 'in-keeping' with the village. Other responses looked for a mix of housing and for a mix in styles. One respondent highlighted the need for energy efficiency measures.

### Housing Design

There was little consistency in the responses provided.

One call for energy efficiency measures was balanced out by a request for there to be 'no turbines/solar panels' whilst another respondent echoed concern over windfarms. A call for more modern designs was countered by a request for local, traditional materials.

### Environment

There was a lot of interest shown in the environmental displays with protection of green spaces, views and footpaths given strong support. Some respondents also highlighted the need to enhance the environmental areas through the provision of benches, litter bins and dog waste bins. One respondent raised the issue of allotments and another drew attention to the importance of the surroundings of the River Welland.

## **Transport/Access**

This display drew the highest number of responses. Common concerns included the need for traffic management solutions to problems of speeding, including signage and cameras. One respondent highlighted the need for 'natural traffic calming' above speed bumps.

The need for improvements to public transport also featured amongst the responses as well as stressing the importance of cycleways and footpaths.

## **Community facilities/amenities**

The importance of local facilities (shop, pub, village hall, sports ground, bowling green) was highlighted and there was reference to the need for better medical and healthcare facilities. The benefit of allotments was mentioned.

## **Employment**

The link between employment and important local facilities was made and support was expressed for home working.

A popular response was for the introduction of some form of facility for business networking, i.e. an incubator and innovation centre.

## **Anything Else?**

Some support was identified for promoting the heritage of the village. Other points made have been raised in the comments in the sections above.

**Gary Kirk**  
**Yourlocale**  
**June 2016**





