

### 3 THE LOCAL CONTEXT

#### **Key findings:**

- **An ageing population:** Demographic change by 2031 will see a significant increase in the proportion of people aged over 50 and since sport and physical activity rates typically decline with age, the market for local playing pitches will evolve accordingly.
- **Population growth:** The ONS 2018 sub-national population projections forecast an increase of 10,155 people (or 11.9%) over the period 2021 to 2031. This will increase demand for facilities for sport and physical activity.
- **Overall sports participation rates:** Local participation rates in sport and physical activity have increased significantly over the past five years (based upon Sport England's 'Active Lives' survey) and are well above the respective county, regional and national figures.

#### 3.1 Introduction

This section identifies the context within which pitches and outdoor sports facilities provision is made in Harborough district.

#### 3.2 Background

##### 3.2.1 Location

Harborough district covers an area of 238 square miles of rural south and east Leicestershire. It borders ten local authorities in four counties (Warwickshire, Leicestershire, Rutland and Northamptonshire), namely Rugby, Blaby, Oadby and Wigston, Leicester, Charnwood, Melton, Rutland, Corby, Kettering and Daventry.

##### 3.2.2 Settlement pattern

The district's population is split between the two market towns of Market Harborough and Lutterworth, the large villages of Broughton Astley, Great Glen, Kibworth and Fleckney, and Bushby, Thurnby and Scraptoft which are part of Leicester's Principal Urban Area. Just under a third of the district's population live in the smaller rural settlements, 71 of which have a population of less than 500 people.

##### 3.2.3 Transport links

The district's central location gives it good access to regional and national transport links. The M1 passes through the district in the west whilst the M6/A14 is located to the south. Other main routes include the A6, A47 and A508 which between them provide links to Leicester, Northampton, Kettering and Corby.

### 3.3 Demography

#### 3.3.1 Current population

The Office of National Statistics (ONS) mid-2020 population estimates for Harborough indicate 95,537 residents. This represents an increase of 10,155 people (11.9% growth) since the 2011 Census figure of 85,382.

#### 3.3.2 Age structure

Analysis of the ONS mid-2020 sub-national population projections shows that Harborough district has a relatively elderly age profile compared with both Leicestershire and England.

<b>Age</b>	<b>Harborough No.</b>	<b>Harborough %</b>	<b>Leicestershire %</b>	<b>England %</b>
0-14	16,233	17.0%	16.8%	18.1%
15-24	9,114	9.5%	11.8%	11.6%
25-49	27,809	29.1%	30.4%	32.6%
50-64	21,383	22.4%	20.5%	19.2%
65+	20,998	22.0%	20.5%	18.5%
<b>Total</b>	<b>95,537</b>	<b>100.0%</b>	<b>100%</b>	<b>100%</b>

#### 3.3.3 Sub-areas

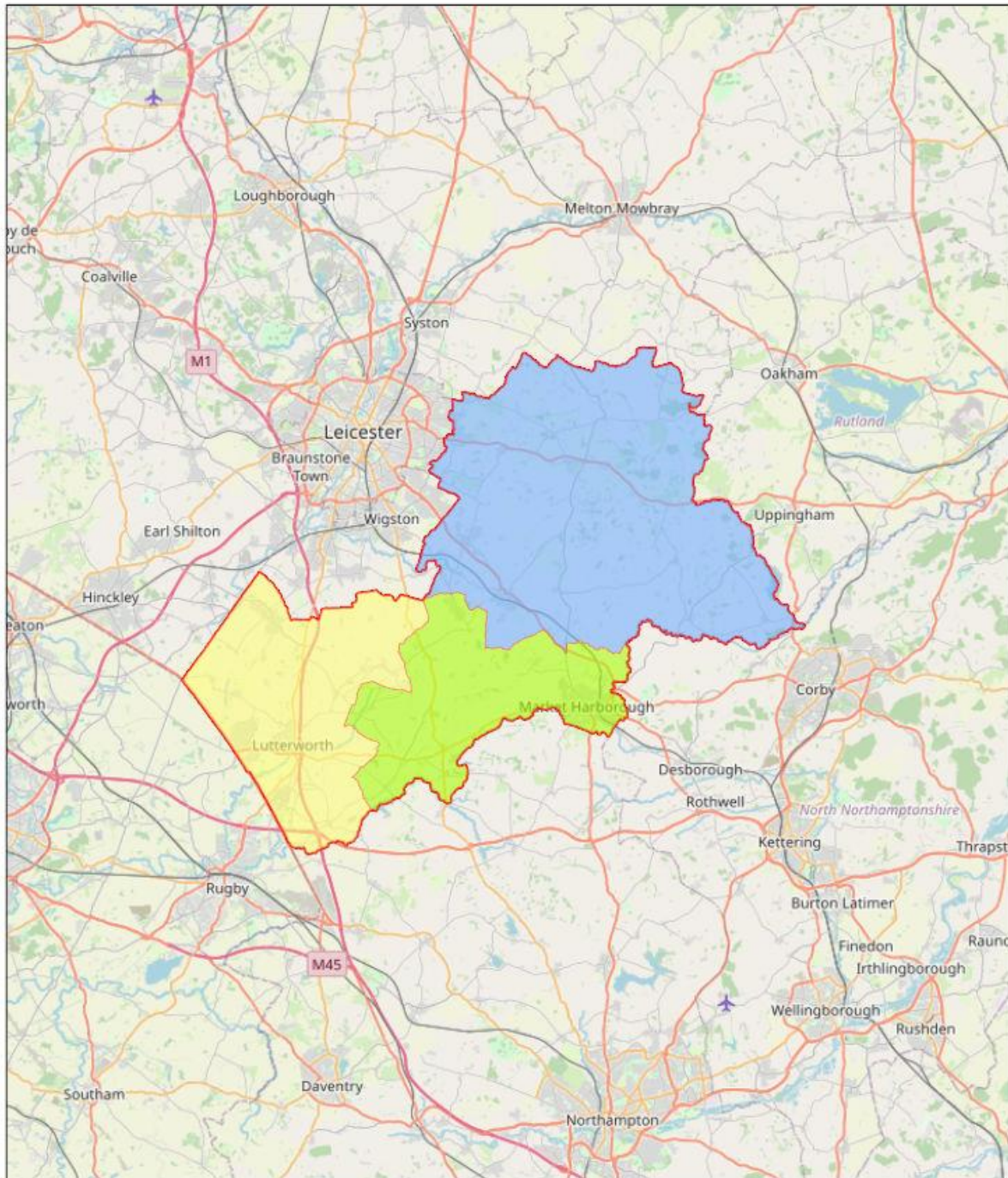
The district can be divided into sub-areas, to help analyse provision at a more local level and in particular to assess the differential impact on supply and demand for sports facilities arising from housing growth. Three areas are identified in the 'Harborough Playing Pitch Strategy' (2018), on the basis that they comprise discrete areas within which the population will typically look to access provision on a relatively local basis. The ward populations are ONS 2020 small-area estimates:

<b>Sub-area</b>	<b>Wards</b>	<b>Ward Population 2020</b>	<b>Sub-area Population 2020</b>
West sub-area	Broughton Astley, Primethorpe and Sutton	4,672	28,963
	Broughton Astley South and Leire	5,359	
	Dunton	2,651	
	Lutterworth East	5,483	
	Lutterworth West	5,040	
	Misterton	2,751	
	Ullesthorpe	3,007	
	Middle sub-area	Bosworth	
Fleckney		5,705	
Great Bowden and Arden		5,595	
Little Bowden		6,162	
Lubbenham		2,883	
Logan		6,350	
Welland		8,407	
East sub-area	Billesdon and Tilton	2,630	28,197

Harborough District Council  
Playing Pitch and Outdoor Sports Facilities Strategy

	Glen	5,685	
	Kibworths	8,492	
	Nevill	2,984	
	Thurnby and Houghton	8,406	

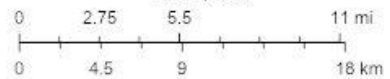
## HARBOROUGH - Sub Areas



2/14/2022

- WEST SUB AREA
- MIDDLE SUB AREA
- EAST SUB AREA
- Harborough District Boundary

1:557,790



© OpenStreetMap (and) contributors, CC-BY-SA

### 3.3.4 Population growth

The ONS 2018 sub-national population projections forecast a population of 104,839 by 2031, an increase of 9,302 (or 9.7%). Comparison of the projections for 2020 and 2031 shows that the percentage of people aged under 50 falls from 55.6% to 53.2%, with proportionate population increases amongst the over 50s.

<b>Age</b>	<b>Population 2020</b>	<b>% 2020</b>	<b>Population 2031</b>	<b>% 2031</b>
0-14	16,233	17.0%	16,373	15.6%
15-24	9,114	9.5%	9,625	9.2%
25-49	27,809	29.1%	29,830	28.4%
50-64	21,383	22.4%	21,451	20.5%
65+	20,998	22.0%	27,560	26.3%
<b>Total</b>	<b>95,537</b>	<b>100.0%</b>	<b>104,839</b>	<b>100.0%</b>

### 3.3.5 Housing development

The location of population growth will be determined to a large extent by housing development allocations as set out in the Harborough Local Plan (2019) and current commitments. The projected number of dwellings by 2031 in these planned (allocated) developments in each sub-area are set out in the table below. Details relating to current planning permissions (commitments) are set out in the Council's latest 5 Year Housing Land Supply Position Statement available on the [Council's website](#).

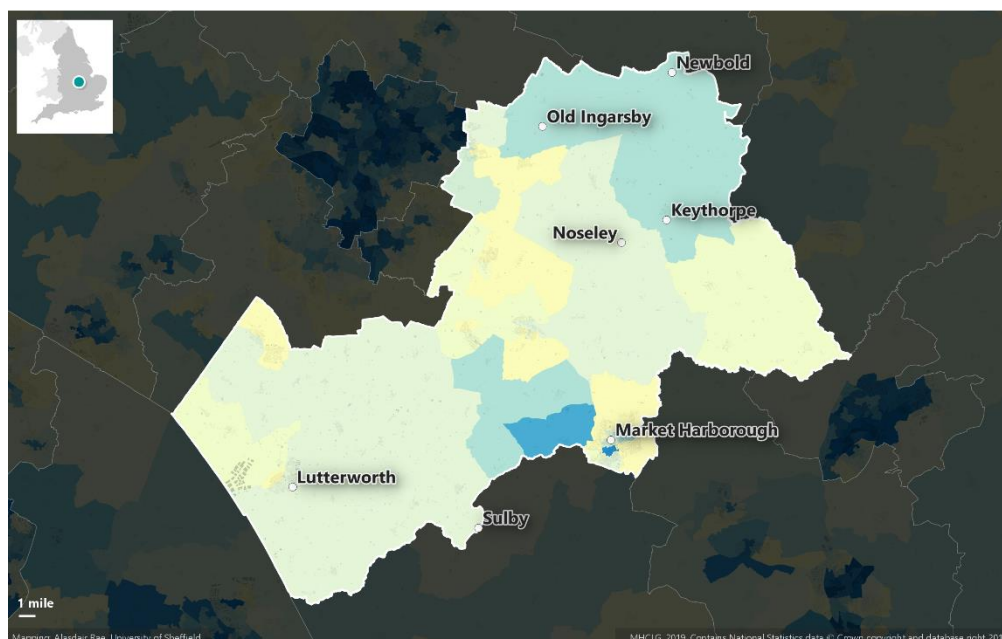
<b>Sub-area</b>	<b>Development</b>	<b>Number of dwellings</b>
West sub-area	East of Lutterworth Strategic Development Area	1,260
Middle sub-area	Overstone Park, Market Harborough	600
	East of Blackberry Grange, Market Harborough	350
	Arnesby Road, Fleckney	130
	Burnmill Farm, Market Harborough	128
East sub-area	Scraptoft North Strategic Development Area	1,200

### 3.3.6 Deprivation

**Deprivation:** The English Indices of Deprivation (2019) show that the district is one of the least deprived in England. It is ranked 308 out of 317 local authority areas in England. However, Central Market Harborough has been identified as a neighbourhood which suffers multiple deprivations. There are also significant barriers to housing and services in the more rural parts of the district, which have very limited public transport. Car ownership levels are high, with almost half of households having more than one car.

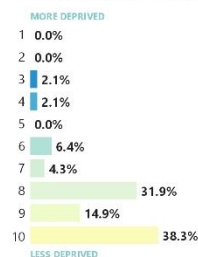
# English Indices of Deprivation 2019

## HARBOROUGH



### Local deprivation profile

% of LSOAs in each national deprivation decile



### What this map shows

This is a map of Indices of Deprivation 2019 data for **Harborough**. The colours on the map indicate the deprivation decile of each Lower Layer Super Output Area (LSOA) for England as a whole, and the coloured bars above indicate the proportion of LSOAs in each national deprivation decile. The most deprived areas (decile 1) are shown in blue. It is important to keep in mind that the Indices of Deprivation relate to small areas and do not tell us how deprived, or wealthy, individual people are. LSOAs have an average population of just under 1,700 (as of 2017).



### 3.3.7 Health

Local health indices recorded in Public Health England's 'Health Profile for Harborough' (2019) show that in general the health of people in the district is better than in England as a whole, although:

- 7.2% (1,070) of children live in low income families.
- Life expectancy at birth in Harborough is 2.0 years longer for men and 1.7 years longer for women than the respective national averages. However, life expectancy is 3.8 years lower for men and 1.7 years lower for women in the most deprived areas of the district than in the least deprived areas.
- The prevalence of obese children aged 10-11 years is 14.9%, compared with 20.2% nationally.
- 57.7% of the adult population of the district is classified as overweight or obese (Public Health England). This is well below the national average of 62.0%.

### 3.4 Sport and physical activity

#### 3.4.1 Participation rates

Sport England's 'Active Lives' survey measures physical activity rates amongst people aged 16 and over at district, county, regional and national levels. The definitions used in the survey are as follows:

- **Sport and physical activity:** This includes at least 10-minutes of moderate or higher intensity sports activities, walking and cycling for leisure or travel, fitness and dance.
- **Active:** The 'Active' population is defined as those doing at least 150 minutes of the above activities per week.
- **Fairly active:** The 'Fairly active' population is defined as those doing between 30 and 149 minutes of the above activities per week.
- **Inactive:** The 'Inactive' population is defined as those doing 30 minutes or less of the above activities per week.

The key data for Harborough district since 2015 is set out below and shows an upward trend in activity levels:

<b>Activity</b>	<b>Nov '15</b>	<b>May '16</b>	<b>Nov '16-</b>	<b>May '17-</b>	<b>Nov '17-</b>	<b>May '18-</b>	<b>Nov '18-Nov '19</b>	<b>May '19-</b>	<b>Nov '19-Nov '20</b>	<b>% Change</b>
	-	-	Nov '16	May '17	Nov '17	May '18	Nov '18	May '19	Nov '19	
<b>Active</b>	60.1%	60.2%	62.1%	63.4%	64.7%	64.7%	64.5%	65.8%	69.9%	+9.8%
<b>Fairly active</b>	13.2%	11.9%	14.4%	13.9%	12.9%	12.6%	12.2%	12.7%	11.3%	-1.9%
<b>Inactive</b>	26.7%	28.0%	23.5%	22.7%	22.3%	22.7%	23.3%	21.1%	18.8%	-7.9%

In comparative terms activity levels in 2019/20 are well above the national, regional and county averages:

<b>AREA</b>	<b>ACTIVE</b>	<b>FAIRLY ACTIVE</b>	<b>INACTIVE</b>
Harborough	69.9%	11.3%	18.8%
Leicestershire	61.7%	11.9%	26.4%
East Midlands	60.2%	11.7%	28.1%
England	60.9%	11.0%	27.1%

### 3.4.2 Club membership

The 'Active Lives' survey also records rates of sports club membership amongst people aged 16 and over and who participated at least twice in the previous 28 days. The figures below show that rates are higher in Harborough district than for all the wider geographical comparators:

<b>Harborough</b>	<b>Leicestershire</b>	<b>East Midlands</b>	<b>England</b>
48.0%	44.9%	40.6%	43.1%

### 3.5 The local pitch and outdoor sports facilities supply network

Sports facilities provision in Harborough district comprises a mixed economy involving the public, voluntary and commercial sectors. The key providers are as follows:

- **Harborough District Council:** The Council provides playing pitches and outdoor sports facilities at several sites in the district.
- **Schools:** State and private secondary schools are major pitch providers in the district, although not all provision is fully community accessible.
- **Sports clubs:** Voluntary sector sports clubs provide and run a range of sports pitches and outdoor sports facilities.
- **Parish councils:** Several pitches and outdoor sports facilities are provided at village recreation grounds in the district.

### **3.6 The implications for pitch and outdoor sports facilities provision**

The implications of the local context for playing pitch and outdoor sports facilities provision in Harborough district are as follows:

- **An ageing population:** Demographic change by 2031 will see a significant increase in the proportion of people aged over 50 and since sport and physical activity rates typically decline with age, the market for local playing pitches will evolve accordingly.
- **Population growth:** The ONS 2018 sub-national population projections forecast an increase of 10,155 people (or 11.9%) over the period 2021 to 2031. This will increase demand for facilities for sport and physical activity.
- **Overall sports participation rates:** Local participation rates in sport and physical activity have increased significantly over the past five years (based upon Sport England's 'Active Lives' survey) and are well above the respective county, regional and national figures.



