

## 9 TENNIS COURT NEEDS

### 9.1 Organisational context

- **Lawn Tennis Association:** The Lawn Tennis Association is the governing body of the sport and supports the development of the game in Harborough.
- **Affiliated Clubs:** There are 10 LTA-affiliated tennis clubs and three unaffiliated clubs in Harborough.

### 9.2 Strategic context

#### 9.2.1 National tennis strategy

The LTA's Vision is: 'Tennis Opened Up' and Mission is: 'To make Tennis relevant, accessible, welcoming & enjoyable'. Its Strategic Plan 2019 - 2023 '*Tennis for Britain*' (2019) contains the following priorities:

- **Visibility:** Broaden relevance and increase visibility of tennis all year round to build engagement and participation with fans and players.
- **Innovation:** Innovate in the delivery of tennis to widen its appeal.
- **Investment:** Support community facilities and schools to increase the opportunities to play.
- **Accessibility:** Make the customer journey to playing tennis easier and more accessible for anyone.
- **Engagement:** Engage and collaborate with everyone involved in delivering tennis in Britain, particularly coaches and volunteers, to attract and maintain more people in the game.
- **Performance:** Create a pathway for British champions that nurtures a diverse team of players, people and leaders.
- **Leadership:** Lead tennis in Britain to the highest standard so it is a safe, welcoming, well-run sport.

#### 9.2.2 Neighbouring local authorities

Outdoor sports facilities strategies in neighbouring districts identify cross-boundary issues:

##### **Rugby**

The '*Rugby Sports Facilities and Playing Pitch Strategy*' (2013) identifies a need for an additional 12 tennis courts by 2026, although some of this need could be met by expanding community access to existing courts on school sites.

### ***Blaby***

The '*Blaby Playing Pitch Strategy Assessment*' (2020) identifies that 'there is sufficient supply of tennis courts at all club sites in the district to cater for current demand'.

### ***Oadby and Wigston***

The '*Oadby and Wigston Playing Pitch Strategy*' (2018) identifies that 'the demand for tennis playing facilities is being met with surplus to spare'.

### ***Leicester***

The '*Leicester City Council Playing Pitch Strategy*' (2017) identifies that 'there are sufficient tennis courts overall offering a variety of access arrangements and no evidence of a requirement for additional facilities'.

### ***Charnwood***

The '*Charnwood Playing Pitch Strategy*' (2018) identifies that 'there is in theory sufficient supply of outdoor courts to meet the current demand for tennis generated within the Borough. However, there is a significant under-supply of courts for casual 'pay-and-play' use'.

### ***Melton***

Melton Borough Council is working on an updated Playing Pitch Strategy for the borough in 2022. The current '*Melton Playing Pitch Strategy*' (2014) does not include an assessment of tennis needs.

### ***Rutland***

Rutland County Council is working on an updated Playing Pitch Strategy for the county in 2022. The '*Rutland Sports and Recreation Strategy*' (2015) identifies that existing courts meet all current needs, although floodlights would increase capacity at some sites..

### ***Corby***

The '*Corby Borough Council Playing Pitch Strategy and Action Plan*' (2017) identifies that 'Corby Tennis Centre is operating at capacity, but there is spare capacity at all other sites'.

### ***Kettering***

The '*Kettering Borough Council Playing Pitch Strategy Needs Assessment Report*' (2020) identifies that existing courts can accommodate all current and future demand'.

### ***Daventry***

The '*Daventry Playing Pitch Strategy*' (2018) does not include an assessment of tennis court needs.

### 9.2.3 Implications of the strategic context

Tennis is embarking on an ambitious effort to attract new and lapsed participants and its programmes will be supported by strategic initiatives at county and local level to implement its strategy.

## 9.3 Stakeholder consultation

### 9.3.1 Lawn Tennis Association

Consultation with the Lawn Tennis Association highlighted the following issues:

- Tennis is healthy in Harborough district with a number of thriving local clubs, although there is limited provision of public courts in parks.
- The LTA's vision for tennis has recently been introduced following a major consultative process. The vision is 'Tennis Opened Up' and the mission is to grow tennis by making it more relevant, accessible, welcoming and enjoyable. Strategic initiatives at county and national level aim to support this.
- The LTA wants to work with local networks, to promote a joined up, transformational improvement to existing facilities, largely through increasing the number of courts that are floodlit and covered but also courts that can be booked online.
- The LTA has grant funding for Gate Access technology for courts in identified sites that have over 1,000 potential users within a 10min drive time. Harborough district currently has no such sites but this may change with any planned housing developments due to take place.
- The LTA has a partnership with the 'Clubspark' online booking system, which provides a simple and flexible online management system, which includes online booking as well as website and membership management modules.
- Most clubs in Harborough are operating at full capacity, despite a steady decline in tennis participation nationally.
- The LTA's facility loan scheme provides interest free loans from £25,000 up to £250,000. The funding stream will prioritise investment into low cost indoor structures and floodlights to enable communities to grow participation by accessing all year round facilities. The objectives of the fund are:
  - To provide indoor or floodlit and year round playing facilities to encourage community accessible play all year.
  - Enhance facilities to create better playing environments to encourage play all year.
  - Retain and increase the number of participants at the venue.

- Offer and increase both non-member 'pay-and-play' usage and coaching opportunities.
- Grow the numbers of adults and juniors on the coaching programme.
- Provide online booking through ClubSpark with courts available through LTA Rally.
- Funding will be prioritised as follows:
  - Low cost indoor buildings.
  - Installation of new floodlights.
- Consideration for funding will be given to projects that include:
  - Court surface upgrades to a year round playing surface.
  - New tennis courts.
  - Padel courts.
  - Accessible facilities that cater for disabled players.
  - Innovation to drive membership, usage and tennis participation.
  - Clubhouses - only as part of a wider project for low cost indoor structures, new tennis courts or new floodlights.
- The LTA's vision 'Tennis Opened Up' is about making tennis more accessible. It's about breaking barriers to entry and growing the game of tennis. One of the LTA's key strategies is to find new ways to grow participation and Padel is an innovative format of tennis that's fun, flexible, easy to play and extremely sociable.
  - Padel is a form of tennis that's easy to play, fun and extremely sociable. It's played mainly in a doubles format on an enclosed court about a third of the size of a tennis court and can be played in groups of mixed ages and abilities, as it's not power dominant. The rules are broadly the same as tennis, although you serve underhand and the walls are used as part of the game with the ball allowed to bounce off them.
  - One of the fastest growing sports across continental Europe, Padel has gained increasing popularity over recent years, with over six million people currently playing in Spain. There were 150 Padel courts in Great Britain in 2021, with a target of 400 by 2023. There are currently two Padel Tennis courts in Harborough district at Market Harborough Cricket and Squash Club.

### 9.3.2 Local tennis clubs

A questionnaire survey was circulated to all 11 LTA-affiliated clubs in Harborough district. Seven clubs responded.

- Collectively, the LTA-affiliated clubs in the district have 1,303 members.
- Demand for tennis locally shows a slight increase over the past three years, with two clubs reporting increased membership numbers and four with static membership.

### 9.3.3 Great Glen Tennis Club

The club commented that 'we have been unable to develop team status due to no clubhouse - this is also the same with coaching due to lack of facilities'.

### 9.3.4 Houghton Tennis Club

The club made the following comments:

- 'We have been unable to find a suitable coaching resource for juniors'.
- 'We are about to go ahead to put artificial grass surfaces on our 3 courts'.

### 9.3.5 Husband's Bosworth Tennis Club

The club commented that 'Harborough has an ample supply of sporting facilities in most sports especially tennis as most villages have access to at least two sets of facilities close by'.

### 9.3.6 Kibworth Tennis Club

The club made the following comments:

- 'Ideally we would like one extra court as we are very busy at peak times particularly when team matches are being played, preventing juniors and adults playing'.
- 'We would like to start changing our floodlights to LED lighting'.
- 'It would be very useful for Kibworth School to re-open its facilities to the public'.

### 9.3.7 Lutterworth Tennis Club

The club made the following comments:

- 'We have 36 Children currently on a waiting list for places in our coaching programme'.

- 'We want to build an additional court, practice court and hitting wall as well as keep on top of maintaining our current facilities. We wanted a dome to cover two of our courts but failed in funding attempts'.
- 'We need funding to get another court and indoor facilities'.

### 9.3.8 Market Harborough Tennis Club

The club made the following comments:

- 'We are planning to purchase floodlights for our fourth court'.
- 'MHLTC do not have any indoor tennis facilities and in past years have used the dome at the local leisure centre for coaching. This is a multiple sport dome, so our coach constantly finds himself in competition to book courts'.
- 'The dome itself is now old and in drastic need of refurbishment for example ineffective lightning, poor surface, poor temperature control. Ideally this would be replaced and a fair and equitable booking system put in place to ensure fair distribution of dome hours allocation. There are several indoor netball facilities locally but the dome is the only location to support tennis. We are fearful if the dome was reallocated to a school, the school would take ownership and our ability to use it as a tennis facility would be compromised. The current location of the dome at the leisure centre is preferable due to the leisure centre facilities'.

## 9.4 *Tennis Court Demand*

### 9.4.1 Introduction

This section summarises the demand for tennis Harborough district and includes:

- National tennis demand patterns.
- Tennis clubs in Harborough.
- Displaced demand.
- Latent and unmet demand.
- Future demand.

### 9.4.2 National demand patterns

LTA data on national tennis playing demand patterns is instructive for describing activity patterns in Harborough:

- ***Location of play:*** The importance of parks courts is emphasised by the following data on where people play tennis:

| <b>Location</b>       | <b>% players</b> |
|-----------------------|------------------|
| Parks                 | 32%              |
| Education sites       | 21%              |
| Tennis clubs          | 14%              |
| Leisure centres       | 10%              |
| Gyms/health clubs     | 7%               |
| Private courts        | 5%               |
| Indoor tennis centres | 5%               |
| Elsewhere             | 5%               |

- **Organised play:** Parks players are less reliant on organised tennis activity:

| <b>Type of tennis</b>             | <b>% parks players</b> | <b>% club players</b> |
|-----------------------------------|------------------------|-----------------------|
| Social tennis with friends/family | 90%                    | 74%                   |
| Informal tennis                   | 15%                    | 18%                   |
| Individual tennis competition     | 2%                     | 17%                   |
| Group coaching/lessons            | 2%                     | 15%                   |
| Team tennis competition           | 1%                     | 13%                   |
| Private lessons                   | 1%                     | 11%                   |
| Cardio tennis                     | 3%                     | 8%                    |

- **Satisfaction levels with courts:** The % of players of each type who are 'very satisfied' are as follows:

| <b>Aspects of courts</b> | <b>% parks players</b> | <b>% club players</b> |
|--------------------------|------------------------|-----------------------|
| Safety of courts         | 28%                    | 49%                   |
| Proximity to home        | 31%                    | 45%                   |
| Condition of courts      | 13%                    | 39%                   |
| Ease of booking          | 16%                    | 35%                   |
| Cost of courts           | 36%                    | 31%                   |
| Availability of courts   | 19%                    | 30%                   |
| Number of courts         | 13%                    | 30%                   |
| Customer service         | 10%                    | 27%                   |
| Ancillary facilities     | 5%                     | 26%                   |

- **Awareness of local tennis courts:** The importance of publicising court availability is emphasised by the following findings:

| <b>Type of court</b>  | <b>% people aware</b> |
|-----------------------|-----------------------|
| Parks courts          | 31%                   |
| Tennis club courts    | 28%                   |
| Leisure centres       | 27%                   |
| Education courts      | 15%                   |
| Indoor tennis centres | 10%                   |
| Gyms/health clubs     | 12%                   |
| Other courts          | 9%                    |
| No facilities nearby  | 11%                   |

|                            |     |
|----------------------------|-----|
| No known facilities nearby | 25% |
|----------------------------|-----|

### 9.4.3 Harborough Tennis Clubs

Tennis clubs in Harborough district, the outdoor courts where they play and their membership trends between 2017 and 2021 are as follows. LTA Affiliated clubs are asterisked.

| <i>Club</i>            | <i>Home courts</i>                | <i>No. members<br/>2017</i> | <i>No. members<br/>2021</i> | <i>Change</i> |
|------------------------|-----------------------------------|-----------------------------|-----------------------------|---------------|
| Foxton Tennis Club*    | Foxton Tennis Club                | 70                          | 56                          | -14           |
| Gilmorton TC           | Gilmorton Recreation Ground       | 24                          | 25                          | +1            |
| Great Glen TC*         | Great Glen Recreation Ground      | 105                         | 122                         | +17           |
| Houghton TC*           | Houghton TC                       | 123                         | 89                          | -34           |
| Husband's Bosworth TC* | Husband's Bosworth TC             | 56                          | 30                          | -26           |
| Kibworth Tennis Club*  | Kibworth Tennis Club              | 251                         | 127                         | -124          |
| Lutterworth TC*        | Lutterworth TC                    | 273                         | 221                         | -52           |
| Market Harborough TC*  | Market Harborough TC              | 190                         | 340                         | +150          |
| Medbourne TC*          | Medbourne Sports and Social Club  | 181                         | 199                         | +18           |
| North Kilworth TC      | North Kilworth Sports Association | -                           | -                           | -             |
| Thurnby & Bushby TC    | Wadkins Recreation Ground         | 13                          | -                           | -13           |
| Tilton & District SC*  | Tilton and District Sports Club   | -                           | 57                          | +57           |
| Welland Park TC*       | Welland Park                      | 36                          | 36                          | 0             |
| <b>TOTAL</b>           | <b>-</b>                          | <b>1,322</b>                | <b>1,303</b>                | <b>-19</b>    |

### 9.4.4 Displaced demand

Displaced demand relates to play by teams from within the study area which takes place outside of the area, or vice versa. Based upon the results of the clubs' survey, there is no evidence of any displaced demand for tennis.

### 9.4.5 Unmet demand

Unmet demand takes a number of forms:

- Players may have access to a court for matches but nowhere to train or vice versa.
- Some facilities may be unavailable to the community.
- The poor quality and limited capacity of facilities and/or a lack of provision and ancillary facilities which meet a certain standard of play/league requirement.

There is some evidence of unmet demand for outdoor tennis courts in Harborough district at present, with Lutterworth TC operating a waiting list for junior coaching and Great Glen TC requiring changing facilities to develop further.



#### 9.4.6 Latent demand

Whereas unmet demand is known to currently exist latent demand is demand that evidence suggests may be generated from the current population should they have access to more or better provision. There is no evidence of latent demand for tennis in Harborough district at present.

#### 9.4.7 Future demand

This has been assessed as follows:

- **Participation rates:** Sport England’s ‘Active Lives’ survey has recorded adult (16+) weekly participation rates for tennis at national level since 2015:

| <b>Nov 2015-<br/>Nov 2016</b> | <b>May 2016-<br/>May 2017</b> | <b>Nov 2016-<br/>Nov 2017</b> | <b>May 2017-<br/>May 2018</b> | <b>Nov 2017-<br/>Nov 2018</b> | <b>May 2018-<br/>May 2019</b> | <b>Nov 2018-<br/>Nov 2019</b> | <b>May 2019-<br/>May 2020</b> | <b>%<br/>Change</b> |
|-------------------------------|-------------------------------|-------------------------------|-------------------------------|-------------------------------|-------------------------------|-------------------------------|-------------------------------|---------------------|
| 2.0%                          | 1.9%                          | 1.9%                          | 1.9%                          | 1.7%                          | 1.7%                          | 1.6%                          | 1.6%                          | -0.4%               |

- **Population growth:** The ONS 2018 sub-national population projections forecast a population of 104,839 by 2031, an increase of 9,302 (or 9.7%). Comparison of the projections for 2020 and 2031 shows that the percentage of people aged under 50 falls from 55.6% to 53.2%, with proportionate population increases amongst the over 50s.

#### 9.4.8 Key findings on demand

The key findings on demand are as follows:

- There are 13 local clubs serving Harborough district, 10 of whom are affiliated to the LTA.
- The number of members of LTA-affiliated tennis clubs in the district has fallen by 1.5% between 2017 and 2021.
- There is some evidence of unmet demand for outdoor tennis courts with Lutterworth TC operating a waiting list for junior coaching and Great Glen TC requiring changing facilities to develop further.
- Future demand patterns are likely to be similar to current levels, based on participation trends but the higher population projections will create a requirement for 9.7% additional capacity by 2031. This is equivalent to six extra courts.

### 9.5 Tennis Court Supply

#### 9.5.1 Introduction

This section summarises the detail of outdoor tennis court supply in Harborough district. The courts included are defined as hard courts permanently laid out with regulation markings for tennis.

### 9.5.2 Courts with community use and used

| <b>Site</b>                       | <b>Address</b>                                | <b>Floodlit courts</b> | <b>Non-floodlit courts</b> | <b>Sub-area</b> |
|-----------------------------------|---|------------------------|----------------------------|-----------------|
| Coplow Centre                     | Uppingham Road, Billesdon LE7 9FL             | 1 Artificial Grass     | -                          | East            |
| Foxton Tennis Club                | Middle Street, Foxton LE16 7RE                | -                      | 2 Tarmac                   | Middle          |
| Gilmorton TC                      | Lutterworth Road Gilmorton LE17 5PW           | -                      | 2 Tarmac                   | West            |
| Great Glen Recreation Ground      | Bridgewater Drive, Great Glen LE8 9FA         | 3 Tarmac               | -                          | East            |
| Hallaton Recreation Ground        | East Norton Road, Hallaton LE16 8UP           | -                      | 2 Tarmac                   | East            |
| Houghton Tennis Club              | Weir Lane, Houghton-on-the-Hill LE7 9GS       | 3 Tarmac               | -                          | East            |
| Hungarton Sports Club             | Barley Leas, Hungarton LE7 9JF                | -                      | 1 Tarmac                   | East            |
| Husband's Bosworth TC             | Kilworth Road, Husband's Bosworth LE17 6JW    | 1 Tarmac               | 1 Tarmac                   | Middle          |
| Kibworth Tennis Club              | Smeeton Road, Kibworth Beauchamp LE8 0LF      | 5 Tarmac               | -                          | East            |
| Lutterworth Tennis Club           | Hall Lane, Lutterworth LE17 4LN               | 5 Tarmac               | -                          | West            |
| Market Harborough Tennis Club     | Station Road, Great Bowden LE16 7HL           | 3 Tarmac               | 1 Tarmac                   | Middle          |
| Medbourne TC                      | Hallaton Road, Medbourne LE16 8DR             | 3 Tarmac               | -                          | East            |
| North Kilworth Sports Association | South Kilworth Road, North Kilworth LE17 6HF  | 2 Artificial Grass     | -                          | Middle          |
| Robert Smyth Academy              | Burnmill Road, Market Harborough LE16 7JG     | 4 Tarmac               |                            | Middle          |
| Tilton Sports Club                | Oakham Road, Tilton-on-the-Hill LE7 9DB       | 1 Tarmac               | -                          | East            |
| Wadkins Recreation Ground         | Wadkins Way, Bushby LE7 9NA                   | -                      | 2 Tarmac                   | East            |
| Welland Park                      | Welland Park Road, Market Harborough LE16 9DN | 3 Tarmac               | 2 Tarmac                   | Middle          |
| <b>TOTALS</b>                     | <b>-</b>                                      | <b>34</b>              | <b>13</b>                  | <b>-</b>        |

### 9.5.3 Courts by sub-area

Courts with community use and used by sub-area are as follows. It shows that levels of provision are poorest in the West sub-area:

| <b>Sub-area</b> | <b>Population</b> | <b>No. Courts</b> | <b>Courts per capita</b> |
|-----------------|-------------------|-------------------|--------------------------|
| West            | 28,963            | 7                 | 1: 4,138                 |
| Middle          | 35,494            | 19                | 1: 1,868                 |

|                   |               |           |                 |
|-------------------|---------------|-----------|-----------------|
| East              | 28,197        | 21        | 1: 1,343        |
| <b>HARBOROUGH</b> | <b>95,537</b> | <b>47</b> | <b>1: 2,033</b> |

#### 9.5.4 Courts with no community use

The following courts are not available for community use:

| <b>Site</b>                     | <b>Address</b>                           | <b>Courts</b>    |
|---------------------------------|--|------------------|
| Kibworth Mead Academy           | Smeeton Road, Kibworth Beauchamp LE8 0LG | 2 Tarmac         |
| Lutterworth High School         | Woodway Road, Lutterworth LE17 4QH       | 5 Tarmac         |
| Thomas Estley Community College | Station Road, Broughton Astley LE9 6PT   | 4 Tarmac         |
| <b>TOTALS</b>                   | -  | <b>11 courts</b> |

## 9.6 Quality

### 9.6.1 The criteria assessed for tennis courts

The quality of tennis courts was assessed by a non-technical visual inspection during a site visit to all facilities. The criteria that were assessed were as follows:

- **The court:** Court surface, line markings and fitness for purpose.
- **Fencing:** Condition and appearance.
- **Disability access:** Provision for disabled access to the courts.
- **Changing:** The quality and capacity of changing and ancillary facilities.
- **Lighting:** The quality, illumination levels and evenness of floodlights.

### 9.6.2 The basis of the ratings

The facilities were rated on a five-point scale, where 5 equates to 'very good', 4 to 'good', 3 to 'average', 2 to 'poor' and 1 to 'very poor'.

### 9.6.3 Tennis court assessment

The ratings for tennis courts in Harborough district are shown in the table below.

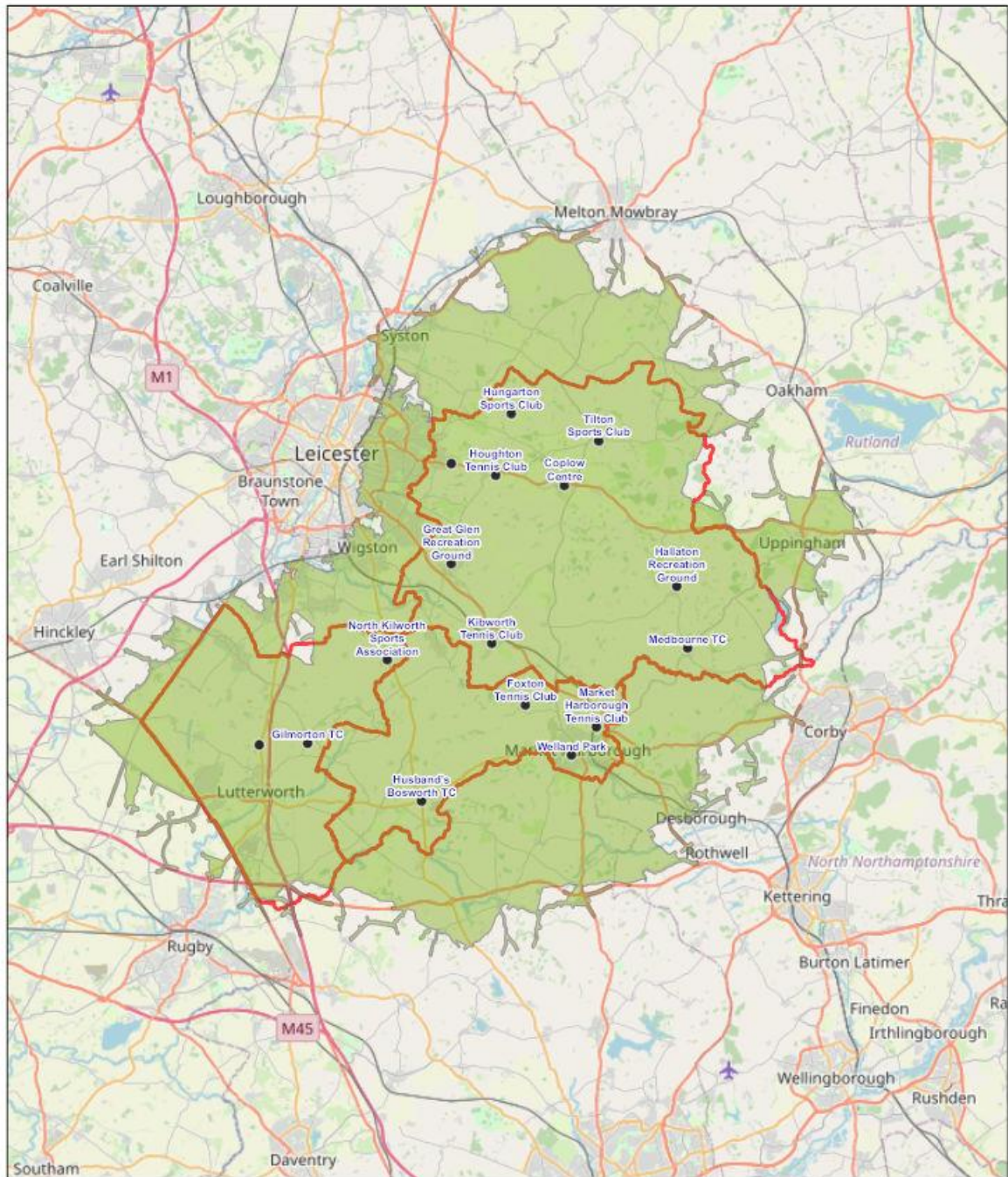
| <b>Facility</b>              | <b>Courts</b> | <b>Fencing</b> | <b>Disabled</b> | <b>Changing</b> | <b>Lighting</b> |
|------------------------------|---------------|----------------|-----------------|-----------------|-----------------|
| Coplow Centre                | 5             | 5              | 5               | 5               | 5               |
| Foxton Tennis Club           | 4             | 3              | 3               | 3               | -               |
| Gilmorton Tennis Club        | 3             | 4              | 2               | -               | -               |
| Great Glen Recreation Ground | 5             | 5              | 4               | 4               | 5               |
| Hallaton Recreation Ground   | 3             | 4              | 4               | 4               | -               |
| Houghton Tennis Club         | 5             | 5              | 4               | 5               | 5               |

|                              |   |   |   |   |   |
|------------------------------|---|---|---|---|---|
| Hungarton Sports Club        | 3 | 4 | 3 | - | - |
| Husband's Bosworth TC        | 3 | 3 | 2 | 2 | 4 |
| Kibworth Tennis Club         | 5 | 4 | 4 | 4 | 4 |
| Lutterworth Tennis Club      | 4 | 4 | 3 | 4 | 5 |
| Market Harborough TC         | 4 | 4 | 4 | 5 | 5 |
| Medbourne Tennis Club        | 4 | 4 | 4 | 4 | 4 |
| North Kilworth Sports Assoc. | 5 | 5 | 4 | - | 4 |
| Tilton Sports Club           | 3 | 4 | 3 | - | 3 |
| Wadkins Recreation Ground    | 4 | 4 | 3 | - | - |
| Welland Park                 | 5 | 5 | 4 | - | 5 |

### **9.7 Accessibility**

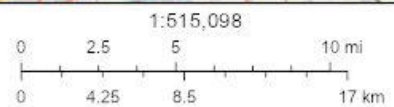
The LTA applies a 10 minute drivetime catchment to define accessibility. The map shows that the whole of Harborough district is effectively within 10-minutes' drivetime of a court.

## HARBOROUGH - Outdoor Tennis Courts 10 Minutes Drive



2/15/2022

- OUTDOOR TENNIS
- 10.0 Minutes
- ▭ West Sub Area, Middle Sub Area, East Sub Area
- ▭ Harborough District Boundary



© OpenStreetMap (and) contributors, CC-BY-SA

## 9.8 Availability

The table below identifies the basis of use and cost of tennis court usage in Harborough district:

| <b>Facility</b>              | <b>Basis of use</b>   |
|------------------------------|---|
| Coplow Centre                | Bookable and casual use. £5 per hour  |
| Foxton Tennis Club           | Members only. Adult £50 annually, Junior £20 per annum.   |
| Gilmorton Tennis Club        | Members only. Adult £50 annually, Junior £25 per annum.   |
| Great Glen Recreation Ground | Members and pay-and-play. Adult membership £60 annually, Junior £25 per annum. Pay-and-play £10 per hour.                   |
| Hallaton Recreation Ground   | Open access, no usage charges.  |
| Houghton Tennis Club         | Members only. Adult £100 annually, Junior £20 per annum.  |
| Hungarton Sports Club        | Members only. Adult £40 annually, Junior £20 per annum.   |
| Husband's Bosworth TC        | Members only. Adult £50 annually, Junior £25 per annum.   |
| Kibworth Tennis Club         | Members only. Adult £162 annually, Junior £57 per annum.  |
| Lutterworth Tennis Club      | Members only. Adult £158 annually, Junior £37 per annum.  |
| Market Harborough TC         | Members only. Adult £45 annually, Junior £15 per annum.<br>Pay-and-play users £5.   |
| Medbourne Tennis Club        | Members only. Adult £95 annually, Junior £30 per annum.   |
| Robert Smyth Academy         | Pay-and-play users £10 per hour.  |
| North Kilworth Sports Assoc. | Members Adult £25 annually, Junior £15 per annum.<br>Pay-and-play users Adult £2, Junior £1.                                |
| Tilton Sports Club           | Members only. Adult £20 annually, Junior £10 per annum.   |
| Wadkins Recreation Ground    | Members only. Adult £50 annually, Junior £25 per annum.   |
| Welland Park                 | Club members £15 annually - exclusive use at specified times.<br>Casual use free at other times. £1 tokens for floodlights. |

## 9.9 Key findings on supply

The key findings are as follows:

- There are 47 tennis courts with community access in Harborough district, 34 of which are floodlit. Per capita levels of provision are much lower than the district average in the West sub-area.

- The quality of club-owned tennis courts is generally good, but there are issues with disabled access and changing facilities at two and one sites respectively.
- Accessibility of courts is good, with the entire population within 10 minutes driving time of the nearest facility, although per capita levels of provision are much lower than the district average in the West sub-area.
- 21 courts are available for casual use. All other courts are for club members only.

### **9.10 Developments since the 2018 PPS**

The key developments since the assessment of tennis needs in the 2018 PPS are as follows:

- The number of members of LTA-affiliated tennis clubs in the district has fallen by 1.5% between 2017 and 2021.
- Two key sites (Lutterworth TC and Market Harborough TC are operating at well over capacity respectively, which is the same position as in 2018.
- Kibworth Tennis Club and Market Harborough Tennis Club have both provided new clubhouses since 2018.
- Robert Smyth Academy as provided four new community accessible tennis courts since 2018.
- Market Harborough Cricket and Squash Club provided two new Padel Tennis courts since 2018.

### **9.11 The balance between tennis court supply and demand**

Four criteria have been assessed to evaluate the balance between tennis court supply and demand in Harborough district:

- **Quantity:** Are there enough courts with sufficient capacity to meet needs now and in the future?
- **Quality:** Are the courts fit for purpose for the users now and in the future?
- **Accessibility:** Are the courts in the right physical location for the users now and in the future?
- **Availability:** Are the courts available for those who want to use them now and in the future?

### **9.12 Quantity**

#### **9.12.1 Current needs**

The LTA calculates the capacity of tennis courts in relation to 'Estimated Membership Capacity'. This is applied to club courts, on the basis that:

- A floodlit outdoor court has a capacity of 60 members.

- A non-floodlit outdoor court has a capacity of 40 members.

The results of applying this to courts in Harborough is tabulated below. Capacity shortfalls are shown in brackets and the analysis shows that:

- Market Harborough TC is operating at and well over capacity and two other sites (Medbourne TC and Tilton and District Sports Club) are also over capacity.
- When aggregated for the district as a whole, there significant spare capacity, equivalent to 22.6 floodlit courts.

| <b>Facility</b>               | <b>No. courts</b> | <b>Capacity</b> | <b>No. members</b> | <b>Balance</b> |
|-------------------------------|-------------------|-----------------|--------------------|----------------|
| Foxton Tennis Club            | 2                 | 80              | 56                 | 24             |
| Gilmorton TC                  | 2                 | 80              | 25                 | 55             |
| Great Glen TC                 | 3                 | 180             | 122                | 58             |
| Houghton TC                   | 3                 | 180             | 89                 | 91             |
| Husband's Bosworth TC         | 2                 | 100             | 30                 | 70             |
| Kibworth Tennis Club          | 5                 | 300             | 127                | 173            |
| Lutterworth TC                | 5                 | 300             | 221                | 79             |
| Market Harborough TC          | 4                 | 220             | 340                | (120)          |
| Medbourne TC                  | 3                 | 180             | 199                | (19)           |
| North Kilworth TC             | 2                 | 120             | -                  | -              |
| Thurnby and Bushby TC         | 2                 | 80              | -                  | -              |
| Tilton & District Sports Club | 1                 | 40              | 57                 | (17)           |
| Welland Park TC               | 5                 | 260             | 36                 | 224            |
| <b>TOTALS</b>                 | <b>38</b>         | <b>2,660</b>    | <b>1,303</b>       | <b>1,357</b>   |

### 9.12.2 Future needs

Future demand patterns are likely to be similar to current levels, based on participation trends but the population growth projections will create a requirement for 9.7% additional capacity by 2031. This is equivalent to five extra courts, which can be accommodated via the spare capacity at existing facilities.

## 9.13 Quality

### 9.13.1 Current quality

The quality of club-owned tennis courts is generally good, but many of the local authority-owned parks courts have 'poor' quality playing surfaces and there are issues with disabled access and changing facilities at two and one sites respectively.

### 9.13.2 Future quality

All court providers will need to continue to invest in maintaining and improving their facilities, so if this process can be assisted with funding from developer contributions in the future, it seems reasonable to assume that local provision will continue to be upgraded regularly.



## **9.14 Accessibility**

### **9.14.1 Current accessibility**

All of the population is within 10-minutes' drive of the nearest tennis court.

### **9.14.2 Future accessibility**

Providing locally accessible outdoor tennis courts as part of the housing developments would be consistent with meeting health and well-being objectives in the new developments.

## **9.15 Availability**

### **9.15.1 Current availability**

21 courts are available for casual use. All other courts are for club members only.

### **9.15.2 Future availability**

Provision should be made for 'pay and play' access to all new courts.

## **9.16 The options for securing additional tennis court capacity**

The options for securing existing and additional tennis court capacity to meet current and future needs are as follows:

### **9.16.1 Protect**

Protecting existing tennis courts through the Local Plan will be key both to securing local provision by ensuring that planning policy supports the retention of existing facilities, unless the loss of a facility would involve its replacement with a facility of at least the equivalent size, quality and accessibility.

### **9.16.2 Provide**

There is no need to provide additional courts to meet future needs, because there is sufficient existing spare capacity. However, the site-specific capacity deficits at Market Harborough TC Medbourne TC and Tilton and District Sports Club should be addressed.

### **9.16.3 Enhance**

Enhancing existing tennis court capacity by:

- Addressing the disabled access issues at the two sites where this is rated as 'poor'.
- Ensuring that the courts and ancillary facilities receive regular maintenance and improvements, funded by developer contributions where appropriate.
- Considering the addition of floodlights at appropriate sites, particularly in conjunction with netball developments at shared use sites.

## 9.17 Action Plan

### 9.17.1 Introduction

The tables below set out the action plan for tennis courts to guide the implementation of the strategy. The capital cost estimates are based upon Sport England's 'Facility Costs - Second Quarter of 2021' (2021).

### 9.17.2 Key strategic actions

| <b>Issues</b>                         | <b>Action</b>   | <b>Lead</b> | <b>Partners</b> | <b>Resources</b> | <b>Priority</b> |
|---------------------------------------|---|-------------|-----------------|------------------|-----------------|
| Protection of existing tennis courts. | Include a policy in the Local Plan to protect all existing tennis courts. | HDC         | -               | -                | High            |
| Improving the use of parks courts     | Investigate gate access technology and Clubspark court booking system.    | HDC         | LTA             | TBC              | Medium          |

### 9.17.3 Site-specific actions

| <b>Site</b>                  | <b>Issues</b>   | <b>Action</b>   | <b>Lead</b>           | <b>Partners</b> | <b>Resources</b>                        | <b>Priority</b> |
|------------------------------|---|---|-----------------------|-----------------|---|-----------------|
| Coplow Centre                | No current issues   | No action   | -                     | -               | -                                       | -               |
| Foxton Tennis Club           | No current issues   | No action   | -                     | -               | -                                       | -               |
| Gilmorton Tennis Club        | Poor disabled access  | Provide a tarmac path from the access point   | Gilmorton Tennis Club | -               | £1,500                                  | Medium          |
| Great Glen Recreation Ground | No changing facilities  | Provide a clubhouse   | Great Glen TC         | LTA             | £120,000                                | High            |
| Hallaton Recreation Ground   | No current issues   | No action   | -                     | -               | -                                       | -               |
| Houghton Tennis Club         | No current issues   | No action   | -                     | -               | -                                       | -               |
| Hungarton Sports Club        | No current issues   | No action   | -                     | -               | -                                       | -               |
| Husband's Bosworth TC        | <ul style="list-style-type: none"> <li>• Poor changing</li> <li>• Poor disability access</li> </ul>                             | <ul style="list-style-type: none"> <li>• Provide a tarmac path from the access point</li> <li>• Upgrade the changing shelter</li> </ul> | Husband's Bosworth TC | -               | £1,500 for path<br>£20,000 for changing | High            |
| Kibworth Tennis Club         | No current issues   | No action   | -                     | -               | -                                       | -               |
| Lutterworth Tennis Club      | No current issues   | No action   | -                     | -               | -                                       | -               |
| Market Harborough TC         | <ul style="list-style-type: none"> <li>• Courts used to over capacity</li> <li>• One court and surrounds undersized.</li> </ul> | Provide floodlights to the fourth court   | Market Harborough TC  | LTA             | £10,000                                 | High            |
| Medbourne Tennis Club        | Courts used to over capacity  | No action   | -                     | -               | -                                       | -               |
| Robert Smyth Academy         | No current issues   | No action   | -                     | -               | -                                       | -               |
| North Kilworth Sports Assoc. | No current issues   | No action   | -                     | -               | -                                       | -               |
| Tilton Sports Club           | Courts used to over capacity  | No action   | -                     | -               | -                                       | -               |
| Wadkins Recreation Ground    | No current issues   | No action   | -                     | -               | -                                       | -               |
| Welland Park                 | No current issues   | No action   | -                     | -               | -                                       | -               |