

6 CRICKET PITCH NEEDS

6.1 Key stakeholders

The key stakeholders delivering cricket in Harborough district are:

- **Leicestershire Cricket Board:** The Leicestershire Cricket Board manages cricket in the county, from its grass-roots foundations through to the first-class game.
- **Cricket clubs:** There are 21 affiliated clubs in Harborough district, who collectively run 60 men's teams, eight women's teams, 67 mixed junior teams and eight junior girl's teams.
- **Pitch providers:** Pitches in the district are managed and maintained by the district and parish councils and voluntary sector clubs.

6.2 Strategic context

6.2.1 National cricket strategy

The England and Wales Cricket Board's (ECB) strategy for 2020 -2024 '*Inspiring Generations*' (2019) contains the following priorities and activities:

Grow and nurture the core: The following will be prioritised:

- A new investment fund for County Cricket Boards.
- Investment in club facilities.
- Further investment in county competitions.

Inspire through elite teams: The following will be prioritised:

- Increasing investment in the county talent pathway.
- Incentivising the counties to develop England players.
- Driving the performance system through technology and innovation.
- Creating heroes and connect them with a new generation of fans.

Make cricket accessible: The following will be prioritised:

- Creating a new digital community for cricket.
- Installing non-traditional playing facilities in urban areas.
- Continuing to deliver the South Asian Action Plan.
- Launching a new participation product linked to the new 100-ball competition.

Engage children and young people: The following will be prioritised:

- Doubling cricket participation in primary schools.
- Delivering a compelling and coordinated recreational playing offer from age five upwards.
- Developing safeguarding to promote safe spaces for children and young people.

Transform women and girl's cricket: There will be a structured pathway for women and girls in both softball and hardball cricket that will include:

- Growing the base through participation and facilities investment.
- Launching centres of excellence and a new elite domestic structure.
- Investing in girls' county age group cricket.
- Delivering a girls' secondary school programme.

Support our communities: The following will be prioritised:

- Doubling the number of volunteers in the game.
- Creating a game-wide approach to Trusts and Foundations through the cricket network.
- Developing a new wave of officials and community coaches.
- Increasing participation in disability cricket.

6.2.2 Neighbouring local authorities

Pitch needs assessments in neighbouring local authorities highlighted the following:

Rugby

The '*Rugby Playing Pitch Strategy*' (2013) identifies a need for one additional cricket site to cater for the planned growth, with the preferred option being the Rugby Radio Station site. No significant issues were identified in relation to cross-boundary movement of players with Harborough.

Blaby

The '*Blaby Playing Pitch Strategy Assessment*' (2020) identifies that 'existing cricket pitch provision can meet all current and future needs in the district'.

Oadby and Wigston

The '*Oadby and Wigston Playing Pitch Strategy*' (2018) identifies that 'there is limited cricket played in the Borough and it is predominantly played through pay and play access, as opposed to long-term agreements for clubs'.

Leicester:

The '*Leicester City Council Playing Pitch Strategy*' (2017) identifies that there is a major export of teams from Leicester to the adjoining areas, primarily to Charnwood, though no teams are specifically identified as being exported to Harborough. The cricket sites in Leicester are generally poor quality which limits their use for league games. The PPS identifies a shortfall of 6 pitches.

Charnwood

The '*Charnwood Playing Pitch Strategy*' (2018) identifies 'a deficit in capacity of 165 match equivalents per season in the Rural South-East sub-area that adjoins Harborough district. At peak time there are no available cricket pitches. There is projected demand for an additional 4 teams (2 adult and 2 junior) by 2036'.

Melton

Melton Borough Council is working on an updated Playing Pitch Strategy for the borough in 2022. The '*Melton Playing Pitch Strategy*' (2014) identifies that although there is a shortfall of one pitch to meet future demand in the Central Melton area and two pitches in West Melton, that with spare capacity elsewhere there is sufficient pitch space to meet all future needs.

Rutland

Rutland County Council is working on an updated Playing Pitch Strategy for the county in 2022. The '*Rutland Sports and Recreation Strategy*' (2015) identifies that there is 'sufficient pitch space for cricket up to 2036 if the existing pitch stock is retained'.

Corby

The '*Corby Borough Council Playing Pitch Strategy and Action Plan*' (2017) identifies a 'current collective seasonal shortfall of 13 match equivalent sessions, which is projected to rise to 38 match equivalent sessions by 2031'.

Kettering

The '*Kettering Borough Council Playing Pitch Strategy Needs Assessment Report*' (2020) identifies a 'current collective seasonal shortfall of 43 match equivalent sessions, which is projected to rise to 64 match equivalent sessions by 2031'.

Daventry:

The '*Daventry Playing Pitch Strategy*' (2018) identifies that 'there is sufficient pitch provision, both at peak time and in relation to the total capacity of the pitches to meet all of the future projected demand up to 2029'.

6.2.3 Findings of the 2018 Harborough PPS

The key findings of the '*Harborough Playing Pitch Strategy*' (2018) in relation to cricket are below:

- 'Cricket is strong in Harborough district and a number of the clubs attract a significant number of players from outside of the district, particularly from Leicester and Oadby and Wigston'.
- 'There has been a growth in the junior game, but this contrasts with the adult participation, which has remained fairly constant over the last few years'.

- 'There is a good geographical spread of cricket pitches across the district'.
- 'All of the cricket pitch sites used by the community are in secure community use. There are also two unused sites, one of which is privately owned. None of the sites are at schools'.
- 'There is just sufficient pitch provision to meet the needs of the game at peak time, which is a Saturday for the adult game. However there are high levels of activity at several sites across the rest of the week. Over half of the sites have artificial turf strips, which are important to enable the clubs to have sufficient capacity, particularly for the junior game'.
- 'The agreed quality of the cricket pitches is either 'good' or 'standard' and there is clubhouse provision on all sites. The quality and size of the clubhouses vary, from large and relatively new, to small and only providing basic facilities'.
- 'Some of the sites are shared with football, which impacts upon the game, both in terms of the overlapping seasons, and the quality of the outfield'.
- 'There is expected to be a significant increase in demand for cricket in the period up to 2031, around 46 teams, but this includes the imported players from Leicester, Blaby and Oadby and Wigston. The increase in demand is spread across all of the sub areas but most is in the Middle sub area, which includes Market Harborough'.
- 'There are no known planned new cricket sites, but there may be opportunities to plan additional provision linked to housing growth. The North-West Harborough SDA has around 6 ha of playing field area planned into the development, but it is not yet known if cricket will be provided. This assessment confirms that new pitch provision is required'.
- 'The Middle sub area may require a total of 4 additional cricket pitches by 2031 to meet the demand at peak time, to cater for both the resident players and those who are imported into the district. Although one pitch may be provided at North-West Harborough, there is no other planned provision or identified deliverable sites with potential funding for the others. The initial priority is therefore for the Leicestershire County Cricket Community team and the ECB to work with the clubs, site owners, and leagues to find ways of maximising the sustainable use and increasing the capacity of the existing sites to meet the demand, particularly at Langtons CC. This work can then help confirm what extra provision will be required in terms of new pitches and sites by 2031'.
- 'The West sub area has sufficient provision to meet the needs of the planned growth, so the priorities here are to invest in the quality of the existing sites, particularly those within the accessible distance of the planned East of Lutterworth SDA. Improved quality should enable these sites to meet the additional demand arising in the area. The priorities for investment to increase capacity are Lutterworth CC and Swinford playing fields which provide for Rowland United CC, and Tilton & Lowerby CC'.
- 'The East sub area has two unused pitches, but one of these is unsecure and neither are close enough to Market Harborough or to the Scraftoft area to meet the demand arising from planned housing developments. The concurrent playing pitch strategy work at Leicester and Charnwood has identified a major lack of provision for cricket in Leicester and a high level of outflow of teams and players, particularly into Charnwood. The degree of deficit of provision in Leicester itself means that the importation of players from

Leicester to Harborough is likely to continue into the long term. It is therefore proposed that the sites in Houghton on the Hill (Dixon's Fields) and Bushby (Wadkins Way) are priorities for investment to enhance their capacity'.

- 'A cricket pitch is required to meet the needs of the new population in the Scraftoft North SDA and should be provided on site. However there is an identified major shortfall in cricket provision in Leicester, and a second pitch should be provided within the development to cater for this additional need. The deliverability and funding of this proposed second pitch is still to be confirmed'.

6.2.4 Implications of the strategic context

The implications of the strategic context for cricket in Harborough are as follows:

- **Women and Girls:** Expansion of female participation in cricket is a key objective of the ECB and Leicestershire Cricket and will lead to a significant increase in participation. This will require additional pitches and new and/or improved changing pavilions.
- **Neighbouring areas:** The majority of neighbouring areas have an assessed deficiency of cricket pitches, which limits the potential for exported demand from Harborough district and is likely to lead to pressures for imported demand.

6.3 Cricket demand in Harborough district

6.3.1 Expressed demand

A questionnaire survey was circulated to all ECB-affiliated cricket clubs in Harborough district. The following clubs responded, collectively representing 113 teams, or 78.5% of all the 144 affiliated teams in the district.

- Billesdon Cricket Club
- Bitteswell Cricket Club
- Bowden Cricket Club
- Dunton Bassett Cricket Club
- Fleckney Village Cricket Club
- Great Glen Cricket Club
- Houghton and Thurnby Cricket Club
- Illston Abey Cricket Club
- Kibworth Cricket Club
- Langtons Cricket Club
- Lutterworth Cricket Club
- Medbourne Cricket Club
- North Kilworth Cricket Club

The cricket clubs and teams based in Harborough district are detailed below. Home grounds and teams in italics are located outside the district:

<i>Club</i>	<i>Home Ground(s)</i>	<i>Adult male teams</i>	<i>Adult female teams</i>	<i>Junior mixed teams</i>	<i>Junior female teams</i>
<i>Barkby United CC</i>	Hallaton Recreation Ground	3	0	4	0
<i>Billesdon Cricket Club</i>	Billesdon Cricket Club	3	0	4	0
<i>Bitteswell Cricket Club</i>	Bitteswell Cricket Ground	3	0	2	0
<i>Bowden Cricket Club</i>	Great Bowden Recreation Ground <i>East Carlton Cricket Club</i>	2	1	4	1
<i>Broughton Astley CC</i>	Broughton Astley Recreation Ground	2	0	0	0
<i>Dunton Bassett CC</i>	Dunton Bassett CC	4	0	2	0
<i>Fleckney Village CC</i>	Fleckney Recreation Ground Dixon's Field Mowsley Cricket Ground <i>Upland's Park, Oadby</i>	4	1	4	0
<i>Gilmorton Cricket Club</i>	Gilmorton Cricket Club	0	0	4	0
<i>Great Glen Cricket Club</i>	Great Glen Recreation Ground	2	0	0	0
<i>Gumley Cricket Club</i>	Gumley Cricket Club	2	0	0	0
<i>Harborough South CC</i>	Little Bowden Recreation Ground	1	0	0	0
<i>Houghton and Thurnby CC</i>	Wadkins Way Recreation Ground Dixon's Field	4	1	6	1
<i>Houghton-on-the-Hill CC</i>	Dixon's Field	1	0	0	0
<i>Illston Abey Cricket Club</i>	Illston Abey Cricket Club	3	0	2	0
<i>Kibworth Cricket Club</i>	Kibworth Cricket Club	6	2	11	2
<i>Langtons Cricket Club</i>	Langtons Cricket Club Marston Trussell Cricket Ground	4	0	6	1
<i>Laughton and Mowsley CC</i>	Mowsley Cricket Ground	1	0	0	0
<i>Lutterworth Cricket Club</i>	Lutterworth Cricket Club Ullesthorpe Playing Field	5	2	10	2
<i>Market Harborough CC</i>	Market Harborough CC	2	0	3	0
<i>Medbourne Cricket Club</i>	Medbourne Sports Club	1	0	7	0
<i>Neville Holt CC</i>	Neville Holt CC	1	0	0	0
<i>North Kilworth CC</i>	North Kilworth Sports Club	3	1	1	0
<i>Oakfield and Rowland CC</i>	<i>Oakfield and Rowland CC</i> Swinford Cricket Ground	6	1	2	1
<i>Tilton and Lowesby CC</i>	Lowesby Cricket Ground	1	0	0	0
TOTALS	-	61 (3)	9 (0)	68 (4)	8 (0)

The number of teams by sub-area is as follows:

Sub-area	Men's teams	Women's teams	Junior mixed teams	Girl's teams
West	18	3	16	3
Middle	16	2	14	2

East	27	4	38	3
HARBOROUGH	61	9	68	8

6.3.2 Changes since 2018

Teams in the '*Harborough Playing Pitch Strategy*' (2018) compare with the current figures as follows:

- ***District summary:***

Season	Men's teams	Women's teams	Junior mixed teams	Girl's teams
2017	64	2	39	1
2021	61	9	68	8
Change	-3	+7	+29	+7

- ***Changes at club level:***

Harborough District Council
 Playing Pitch and Outdoor Sports Facilities Strategy

<i>Club</i>	<i>Year/change</i>	<i>Men's teams</i>	<i>Women's teams</i>	<i>Junior mixed teams</i>	<i>Girl's teams</i>	<i>TOTAL</i>
Billesdon Cricket Club	2017	3	0	1	0	4
Billesdon Cricket Club	2021	3	0	4	0	7
Billesdon Cricket Club	Change	0	0	+3	0	+3
Bitteswell Cricket Club	2017	2	0	0	0	2
Bitteswell Cricket Club	2021	3	0	2	0	5
Bitteswell Cricket Club	Change	+1	0	+2	0	+3
Bowden Cricket Club	2017	2	0	4	0	6
Bowden Cricket Club	2021	2	1	4	1	8
Bowden Cricket Club	Change	0	+1	0	+1	+2
Broughton Astley CC	2017	2	0	0	0	0
Broughton Astley CC	2021	2	0	0	0	0
Broughton Astley CC	Change	0	0	0	0	0
Dunton Bassett Cricket Club	2017	3	0	0	0	3
Dunton Bassett Cricket Club	2021	4	0	2	0	5
Dunton Bassett Cricket Club	Change	+1	0	+2	0	+3
Fleckney Village CC	2017	4	0	0	0	4
Fleckney Village CC	2021	4	1	4	0	9
Fleckney Village CC	Change	0	+1	+4	0	+5
Gilmorton Cricket Club	2017	1	0	0	0	1
Gilmorton Cricket Club	2021	0	0	4	0	4
Gilmorton Cricket Club	Change	-1	0	+4	0	+3
Great Glen Cricket Club	2017	4	0	3	0	7
Great Glen Cricket Club	2021	2	0	0	0	2
Great Glen Cricket Club	Change	-2	0	-3	0	-5
Gumley Cricket Club	2017	2	0	0	0	2
Gumley Cricket Club	2021	2	0	0	0	2
Gumley Cricket Club	Change	0	0	0	0	0
Harborough South CC	2017	0	0	0	0	0
Harborough South CC	2021	1	0	0	0	0
Harborough South CC	Change	+1	0	0	0	0
Houghton and Thurnby CC	2017	4	0	4	1	9
Houghton and Thurnby CC	2021	4	1	6	1	14

Harborough District Council
 Playing Pitch and Outdoor Sports Facilities Strategy

Houghton and Thurnby CC	Change	0	+1	+2	0	+3
Illston Abey Cricket Club	2017	3	0	0	0	3
Illston Abey Cricket Club	2021	3	0	2	0	5
Illston Abey Cricket Club	Change	0	0	+2	0	+2
Kibworth Cricket Club	2017	6	1	9	0	16
Kibworth Cricket Club	2021	6	2	11	2	21
Kibworth Cricket Club	Change	0	+1	+2	+2	+5
Langtons Cricket Club	2017	5	0	3	0	8
Langtons Cricket Club	2021	4	0	6	1	11
Langtons Cricket Club	Change	-1	0	+3	+1	+3

<i>Club</i>	<i>Year/change</i>	<i>Men's teams</i>	<i>Women's teams</i>	<i>Junior mixed teams</i>	<i>Girl's teams</i>	<i>TOTAL</i>
Laughton & Mowsley CC	2017	2	0	0	0	2
Laughton & Mowsley CC	2021	1	0	0	0	1
Laughton & Mowsley CC	Change	-1	0	0	0	-1
Lutterworth Cricket Club	2017	4	1	4	0	9
Lutterworth Cricket Club	2021	5	2	10	2	19
Lutterworth Cricket Club	Change	+1	+1	+6	+3	+10
Market Harborough CC	2017	2	0	0	0	0
Market Harborough CC	2021	2	0	0	0	0
Market Harborough CC	Change	0	0	0	0	0
Medbourne Cricket Club	2017	4	0	4	0	4
Medbourne Cricket Club	2021	1	0	7	0	8
Medbourne Cricket Club	Change	-3	0	+3	0	0
Neville Holt Cricket Club	2017	0	0	0	0	0
Neville Holt Cricket Club	2021	1	0	0	0	0
Neville Holt Cricket Club	Change	+1	0	0	0	0
North Kilworth CC	2017	0	0	0	0	0
North Kilworth CC	2021	3	1	1	0	0
North Kilworth CC	Change	+3	+1	+1	0	+5
Oakfield and Rowland CC	2017	4	0	1	0	5
Oakfield and Rowland CC	2021	6	1	2	1	10
Oakfield and Rowland CC	Change	+2	+1	+1	+1	+5
Tilton and Lowesby CC	2017	3	0	0	0	3
Tilton and Lowesby CC	2021	1	0	0	0	1
Tilton and Lowesby CC	Change	-2	0	0	0	-2

6.3.3 Displaced demand

Displaced demand relates to play by teams or other users of playing pitches from within the study area which takes place outside of the area and vice versa. There is some exported demand:

- Oakfield and Rowland Cricket Club was formed by a recent merger and plays most of its matches at a site in Rugby district, but also uses Swinford Cricket Ground.
- Barkby United Cricket Club plays most of its matches at a site in Charnwood, but from 2022 will also use Hallaton Recreation Ground.
- Fleckney Village Cricket Club plays some matches at Uplands Park in Oadby.
- Bowden CC's Third XI plays its home matches at East Carlton Cricket Club in North Northamptonshire district.

There is some imported demand. Rhino Cricket Club from Leicester plays its home games at Dixon's Field.

6.3.4 Unmet demand

Unmet demand takes a number of forms:

- Teams may have access to a pitch for matches but nowhere to train or vice versa.
- Some pitches may be unavailable to the community.
- The poor quality and consequent limited capacity of pitches in the area and/or a lack of provision and ancillary facilities which meet a certain standard of play/league requirement.

Consultation with local clubs indicated that a total of 16 additional teams of all age groups could be accommodated in Harborough district if the quality and quantity of pitch provision was improved, an increase of 11.1% from the number of existing teams.

<i>Club</i>	<i>Men's teams</i>	<i>Women's teams</i>	<i>Junior mixed teams</i>	<i>Girl's teams</i>
Billesdon Cricket Club	0	1	1	0
Bitteswell Cricket Club	0	0	0	0
Dunton Bassett Cricket Club	0	0	0	0
Great Glen Cricket Club	0	1	8	2
Illston Abey Cricket Club	0	0	0	1
Langtons Cricket Club	0	1	0	0
North Kilworth Cricket Club	0	0	1	0
TOTALS	0	3	10	3

6.3.5 Latent demand

Whereas unmet demand is known to currently exist, latent demand is demand that evidence suggests may be generated from a population if they had access to more or better provision. There is no evidence of any latent demand for cricket locally.

6.4 Cricket supply in Harborough district

6.4.1 Cricket facilities quantity

Provision of cricket pitches in Harborough district is set out below. The pitches included in the analysis are defined as natural grass or non-turf pitches (shown in brackets).

- **Available for community use and used:**

Site	Address	Pitches	Wickets	Sub-area
Billesdon Cricket Club	Coplow Lane, Billesdon LE7 9AD	1	8(1)	East
Bitteswell Cricket Ground	Ullesthorpe Road, Bitteswell LE17 4LR	1	6(1)	West
Dixon's Field	Stretton Lane, Houghton-on-the-Hill LE7 9GD	1	7(1)	East
Broughton Astley Recn Gnd	Frolesworth Road, Broughton Astley LE9 6PE	1	8	West
Dunton Bassett CC	Lutterworth Road, Dunton Bassett LE17 5LF	1	12(1)	West
Fleckney Recreation Ground	Leicester Road, Fleckney LE8 8BG	1	14(1)	East
Gilmorton Cricket Club	Kimcote Lane, Gilmorton LE17 5SE	1	8	East

Site	Address	Pitches	Wickets	Sub-area
Great Bowden Recn. Ground	Station Road, Great Bowden LE16 7HN	1	8(1)	Middle
Great Glen Cricket Club	Bindley's Lane, Great Glen LE8 9FA	1	7(1)	East
Gumley Cricket Club	Laughton Road, Gumley LE16 7RX	1	6	Middle
Hallaton Recreation Ground	East Norton Road, Hallaton LE16 8UJ	1	6	Middle
Houghton and Thurnby CC	Wadkins Way, Bushby LE7 9NA	1	10	East
Illston Abey Cricket Club	Gaulby Road, Illston-on-the-Hill LE7 9ET	1	8(1)	East
Kibworth Cricket Club	Fleckney Road, Kibworth Beauchamp LE8 0HG	2	25(2)	East
Langtons Cricket Club	Main Street, East Langton LE16 7TW	1	10(1)	Middle
Little Bowden Recn. Ground	Scotland Road, Little Bowden LE16 8GD	1	6	Middle
Loughton and Mowsley CC	Laughton Lane, Mowsley LE17 6NS	1	4(1)	Middle
Lutterworth Cricket Club	Coventry Road, Lutterworth LE17 4RE	1	14	West
Marston Trussell	Theddingworth Road, Marston Trussell LE16 9TQ	1	10	Middle
Medbourne Cricket Club	Hallaton Road, Medbourne LE16 8DR	1	6(1)	East
Neville Holt Cricket Club	Neville Holt Hall, Medbourne LE16 8EG	1	6	East
North Kilworth CC	South Kilworth Road, North Kilworth LE17 6HF	1	4	Middle
Swinford Cricket Ground	Lutterworth Road, Swinford LE17 6BA	1	10	West
Tilton and Lowesby CC	Hungarton Lane, Lowesby LE7 9DD	1	4	East
Ullesthorpe Playing Field	Ashby Road, Ullesthorpe LE17 5DN	1	6	West
TOTAL	-	27	223(14)	-

- Not available for community use:**

Site	Address	Pitches	Wickets
Leicester Grammar School	London Road, Great Glen LE8 9FL	2	12(1)
Lutterworth College	Bitteswell Road, Lutterworth LE17 4EW	1	(1)
Robert Smyth Academy	Burnmill Road, Market Harborough LE16 7JG	1	(1)
TOTAL	-	4	12(3)

- Provision by sub-area:** Pitches with community use and used by sub-area are as follows:

Sub-area	Population	No. Pitches	Pitches per capita	No. wickets	Wickets per capita
West	28,963	7	1: 4,827	62	1: 467
Middle	35,494	8	1: 4,437	65	1: 623
East	28,197	12	1: 2,350	110	1: 256

HARBOROUGH	95,537	27	1: 3,538	237	1: 403
-------------------	---------------	-----------	-----------------	------------	---------------

6.4.2 Cricket facilities quality

The qualitative analysis of cricket pitches and facilities in Harborough district involved visits to all cricket pitches during the playing season, to undertake the non-technical visual inspections produced by the ECB for Sport England's '*Playing Pitch Strategy Guidance*' (2013). The assessment evaluated the condition of:

- **Grass wickets:** This includes presence of line markings, evidence of rolling, grass cut and height, repaired wickets, grass coverage and ball bounce.
- **Outfield:** This includes grass coverage, length of grass, evenness and evidence of unofficial use or damage to the surface.
- **Non-turf pitches:** This includes integration with the surrounding grass, evenness, stump holes any evidence of moss, tears or surface lifting and ball bounce.
- **Changing facilities:** This includes the presence or absence of umpires' provision, toilets, hot/cold water, heating and an assessment of the condition of the building.
- **Non-turf practice nets:** This includes integration with the surrounding grass, surface quality, ball bounce, safety and integrity of the steel frame and nets and safety signage.

The assessment generates a 'score' for each site. The percentage scores generated equate to ratings of 'Good' for scores of 81% or more (shaded green in the table below) 'Standard' for scores of 80% - 51% (shaded yellow in the table below) and 'Poor' for scores of 50% or below (denoted by shaded red in the table below). Blank cells in the table mean that the feature concerned is absent from the site in question. The scores are as follows:

Site	Wicket	Non-turf	Outfield	Changing	Practice nets
Billesdon Cricket Club	Standard	Good	Poor	Standard	Standard
Bitteswell Cricket Ground	Standard	None	Standard	Standard	Standard
Dixon's Field	Good	Good	Good	Standard	Good
Broughton Astley Recn. Ground	Standard	None	Standard	Standard	None
Dunton Bassett CC	Good	Poor	Good	Standard	Standard
Fleckney Recreation Ground	Good	Good	Standard	Standard	Standard
Gilmorton Cricket Club	Standard	None	Standard	Standard	Poor
Great Bowden Recreation Ground	Standard	Standard	Standard	Good	Good
Great Glen Cricket Club	Standard	Standard	Standard	Standard	None
Gumley Cricket Club	Standard	None	Poor	Poor	None
Hallaton Recreation Ground	Standard	None	Standard	Good	Standard
Houghton and Thurnby CC	Good	Good	Standard	Poor	Good
Illston Abey Cricket Club	Good	None	Good	Good	Standard
Kibworth Cricket Club	Good	Good	Good	Good*	Poor

Langtons Cricket Club	Standard	Good	Standard	Standard	Good
Laughton and Mowsley CC	Standard	Good	Standard	Poor	None
Little Bowden Recn. Ground	Standard	None	Standard	None	None
Lutterworth Cricket Club	Good	Good	Good	Good	Good
Market Harborough CC	Good	Standard	Good	Good	Good
Marston Trussell Cricket Ground	Standard	None	Standard	None	Standard
Medbourne Cricket Club	Standard	Good	Standard	Good	Standard
Neville Holt Cricket Club	Standard	None	Standard	Standard	None
North Kilworth CC	Standard	None	Standard	Standard	Good
Swinford Cricket Ground	Standard	None	Standard	Poor	None
Tilton and Lowesby CC	Standard	None	Standard	Poor	None
Ullesthorpe Playing Field	Standard	None	Standard	Standard	None

* Second pavilion is 'poor' quality.

6.4.3 Pitch carrying capacity

The carrying capacity of pitches is related to their quality and is expressed as the number of 'match equivalents' that can be accommodated each season. The *'Playing Pitch Strategy Guidance'* indicates the following seasonal carrying capacities for cricket pitches:

- A 'good' quality wicket will accommodate five matches per season, a 'standard' quality wicket will accommodate four and a 'poor' quality wicket will accommodate none.
- 'Good' and 'Standard' quality non-turf pitches accommodate 60 matches per season and a 'poor' quality wicket will accommodate none.
- The seasonal pitch carrying capacity of each cricket site in Harborough district is as follows:

The pitch carrying capacity of each site with cricket pitches with community use in Harborough district, expressed in seasonal match equivalents, is as follows:

Site	Grass wickets	Artificial wickets	Total capacity
Billesdon Cricket Club	8	1	92
Bitteswell Cricket Ground	6	1	84
Dixon's Field	7	1	95
Broughton Astley Recn. Ground	8	-	32
Dunton Bassett CC	12	1*	60
Fleckney Recreation Ground	14	1	130
Gilmorton Cricket Club	8	-	32

Great Bowden Recreation Ground	8	1	92
Great Glen Cricket Club	7	1	88
Gumley Cricket Club	6	-	24
Hallaton Recreation Ground	6	-	24
Houghton and Thurnby CC	10	-	50
Illston Abey Cricket Club	8	1	100
Kibworth Cricket Club	25	2	245
Langtons Cricket Club	10	1	100
Laughton & Mowsley CC	4	1	76
Little Bowden Recn. Ground	6	-	24
Lutterworth Cricket Club	14	-	70
Market Harborough CC	12	1	120
Marston Trussell Cricket Ground	8	-	32
Medbourne Cricket Club	6	1	84
Neville Holt Cricket Club	6	-	24
North Kilworth CC	4	-	16
Swinford Cricket Ground	10	-	40
Tilton and Lowesby CC	4	-	16
Ullesthorpe Playing Field	6	-	24
TOTALS	223	14	1,656

* The non-turf pitch is rated as 'poor' quality and has therefore been assessed as having no current carrying capacity.

6.4.4 Pitch maintenance

The pitches owned and managed by local sports clubs are all maintained by the clubs themselves. This involves a combination of paid grounds staff, external contractors and volunteer help. Parish Council-owned pitches are variously maintained by external contractors or the incumbent clubs.

6.4.5 Ownership, management and security of access

The ownership, management and security of community access of all cricket pitch sites in Harborough district is detailed below. Security of access refers to the extent to which community use of the site is protected (through public ownership, planning policy ownership covenants etc.), rather than the security of tenure of specific club users. The pitches not available for community use, listed in section 6.4.1 above, are all owned and managed by the schools concerned.

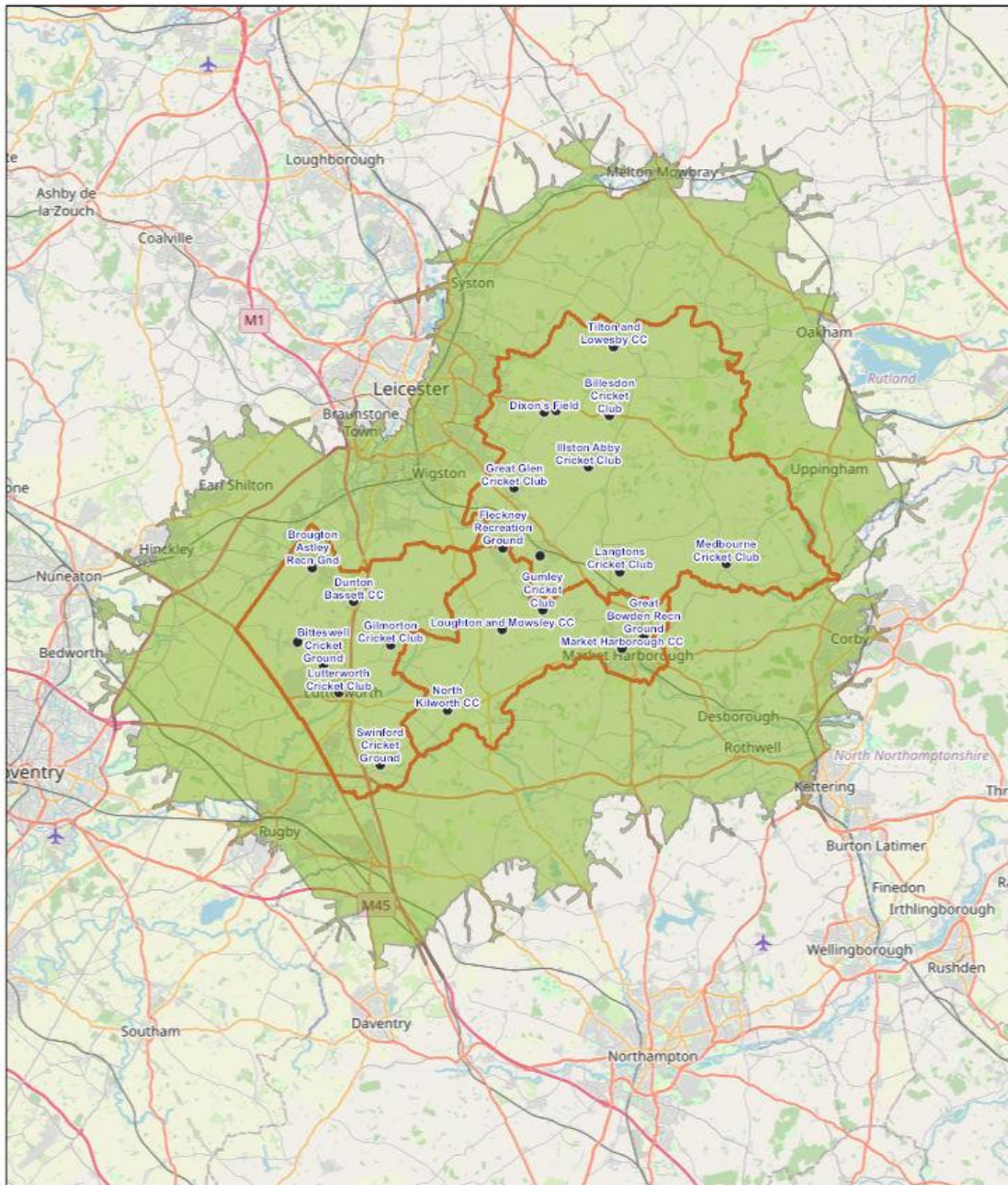
Site	Ownership	Management	Security of access
Billesdon Cricket Club	Private Owner	Billesdon Cricket Club	Secured
Bitteswell Cricket Ground	Bitteswell Cricket Club	Bitteswell Cricket Club	Secured
Dixon's Field	Houghton and Thurnby CC	Houghton and Thurnby CC	Secured
Broughton Astley Recn. Grd.	Broughton Astley Parish Council	Broughton Astley Parish Council	Secured
Dunton Bassett CC	Dunton Bassett CC	Dunton Bassett CC	Secured

Fleckney Recreation Ground	Fleckney Parish Council	Fleckney Parish Council	Secured
Gilmorton Cricket Club	Gilmorton Parish Council	Gilmorton Parish Council	Secured
Great Bowden Recn. Grd.	Harborough District Council	Bowden Cricket Club	Secured
Great Glen Cricket Club	Great Glen Parish Council	Great Glen Cricket Club	Secured
Gumley Cricket Club	Private Landowner	Gumley Cricket Club	Unsecured
Hallaton Recreation Ground	Hallaton & Isabella Stenning Trust	Hallaton & Isabella Stenning Trust	Secured
Houghton and Thurnby CC	Harborough District Council	Houghton and Thurnby CC	Secured
Illston Abey Cricket Club	Private Owner	Illston Abey Cricket Club	Secured
Kibworth Cricket Club	Kibworth Cricket Club	Kibworth Cricket Club	Secured
Langtons Cricket Club	Hignett Family Trust	Langtons Cricket Club	Secured
Laughton and Mowsley CC	Loughton and Mowsley CC	Loughton and Mowsley CC	Secured
Little Bowden Recn. Grd.	Harborough District Council	Harborough District Council	Secured
Lutterworth Cricket Club	Lutterworth Cricket Club	Lutterworth Cricket Club	Secured
Market Harborough CC	Market Harborough CC	Market Harborough CC	Secured
Marston Trussell Cricket Grd	Private Owner	Langtons Cricket Club	Secured
Medbourne Cricket Club	Medbourne Sports & Social Club	Medbourne Sports & Social Club	Secured
Neville Holt Cricket Club	Private Owner	Neville Holt Cricket Club	Unsecured
North Kilworth CC	North Kilworth SSC	North Kilworth SSC	Secured
Swinford Cricket Ground	Private Landowner	Oakfield and Rowland CC	Secured
Tilton and Lowesby CC	Private Landowner	Tilton and Lowesby CC	Secured
Ullesthorpe Playing Field	Ullesthorpe Parish Council	Lutterworth Cricket Club	Secured

6.4.6 Geographical distribution

The geographical distribution of cricket pitches in Harborough district has been assessed by identifying catchments to illustrate local level accessibility. This is based on the results of the clubs' survey, which identifies 15-minutes travel time as the typical maximum. Based upon this, the map overleaf shows that the entire local population is within the catchment of at least one pitch.

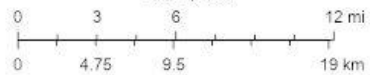
HARBOROUGH - Cricket Pitches 15 Minutes Drive



2/14/2022

1:577,790

- CRICKET PITCHES
- 15.0 Minutes
- ▭ West Sub Area, Middle Sub Area, East Sub Area
- ▭ Harborough District Boundary



© OpenStreetMap (and) contributors, CC-BY-SA

6.5 The views of local stakeholders

6.5.1 Leicestershire Cricket

Consultation with Leicestershire Cricket highlighted that:

- There are 20 clubs with a good geographical spread in the district.
- Women and girls cricket is well developed and expanding in the district.
- There are dual use issues at some sites with football including Great Glen Recreation Ground, Medbourne Sports Club, North Kilworth Sports Club and Ullesthorpe Playing Field.
- Dunton Bassett CC hosts pathway activities for Leicestershire Cricket and as a result needs to upgrade its 'poor' quality non-turf pitch.
- Leicestershire Cricket is currently producing a cricket facilities strategy for the county.
- The introduction of cricket development programmes (see below) has placed added emphasis on the quality of outfield, where much of the activity is based.
- In 2017, the ECB introduced the All Stars Cricket programme to provide an introduction to the game for 5 - 8 year olds. Dynamos Cricket was subsequently introduced for 8 - 11 year olds, providing a softball version of the game. In Harborough, the following clubs ran the programmes in 2021, attracting the numbers of participants indicated:

Club	All Stars	Dynamos
Bowden CC	52	-
Fleckney CC	14	28
Houghton and Thurnby CC	17	13
Kibworth CC	31	2
Lutterworth CC	27	-
Market Harborough CC	76	-
Oakfield and Rowland CC	30	-
TOTALS	247	43

6.6.2 Local cricket clubs

Billesdon CC: The club made the following comments:

- 'An issue for us in future is ensuring security of tenure. The club have leased the ground for many years but have only one year left on current agreement. This will make it increasingly difficult to obtain grants to improve facilities. The close proximity of neighbouring houses is always a problem (i.e. ball damage or lost balls).

- 'We are always looking to improve the facilities on offer to all that visit the ground. We would like to improve the scoreboard and also the seating area for spectators around the clubhouse. We would also like to increase storage area for ground equipment. We are in process of fitting a defibrillator which will also be a benefit to the local community'.
- 'In 2021 we found senior membership had decreased due to running only 1 senior team in 2020 due to the restrictions. The decrease was mainly due to players moving away from area or retiring. We have found numbers have started to increase again in 2022, mainly younger players, and hope this continues. Financially we were very fortunate to receive the covid support grants as we were unable to arrange any of our own fundraising activities. When restrictions were relaxed we took the opportunity to arrange extra junior coaching sessions which helped young people get back to at least some sort of normality'.

Bitteswell CC: The club made the following comments:

- 'The polarization of players, volunteers and resources to large/mega clubs and the incredible increase in red tape and regulations is killing grass roots cricket for smaller and village teams'.
- 'The availability of indoor practice facilities in Lutterworth area is poor - none are dedicated and all have downsides. Hence travel to Leicester city centre to train'.

Bowden CC: The club made the following comments:

- 'Our Saturday Third Team play their home games at East Carlton, Northamptonshire'.
- 'We are keen to put out female senior and junior sides, but struggle to recruit and retain female members'.

Fleckney Village CC: The club made the following comments:

- 'There is a lack of pitches in the area. We require an extra ground if we are to expand further. We currently have only one pitch of our own'.
- 'We are occasional renting grounds outside the district through Oadby and Wigston DC'.
- 'We would like to have a 3rd XI out on Saturdays. Women's cricket is currently played at the same time as junior cricket due to the lack of an available ground'.
- 'We offer walking cricket which is open to those 55+ and those who may have a disability preventing them from playing standard format cricket'.
- 'We would love an indoor facility in Fleckney or Kibworth'.
- 'It would be good if Harborough DC could provide council-maintained pitches available to hire like Leicester City and Oadby and Wigston, even if it was just a couple of strips between football pitches'.

Great Glen CC: The club made the following comments:

- 'There is a lack of funding available for pitch maintenance upgrades, our maintenance equipment is 20-30 years old and gives us regular issues accordingly'.
- 'We have future plans to start a junior cricket program, we are also looking into the possibility of ladies cricket'.

Houghton and Thurnby CC: The club made the following comments:

- 'We cannot run disability cricket, as the clubhouse does not currently have disabled toilets/showers/facilities. We also lack ladies changing rooms and shower room for mixed cricket'.
- 'We would like another girls junior team - we currently share players for girls U16 with another club. We would like to look at setting up disability cricket'.
- 'We had to raise our own funds and re-instate our nets ourselves using the skills of our members - we couldn't afford to replace them professionally and very few grants available for replacing existing equipment'.
- 'Our numbers appear to be increasing from the local area due to the increase in new housing but also we are on the edge of the city boundary, so we also have a large number of new members approach us from the city boundary as well which is beneficial for membership numbers but a large percentage of these members are not in a position to buy the right kit (juniors especially) we have spent club funds in supporting these members to help them purchase kit or the club have purchased kit for loan'.
- 'We find it hard to find grants for replacement items - such as when our sightscreens were old and came to the end of their natural life - most grants will only provide funds for 'new items' not replacement items - however, nothing lasts forever and we struggle to replace old worn out items without some help'.

Kibworth CC: The club made the following comments:

- 'We are having to cap the number of juniors due to lack of qualified and volunteer coaches and facilities available at the club. Improvements to nets are required'.
- 'We have plans to refurbish our second pavilion and practice nets area'.

Lutterworth CC: The club made the following comments:

- 'We hope to have a permanent second pitch and to refurb existing club house. We will increase membership if successful with second pitch plans'.
- 'We have a waiting list due to lack of coaches for Junior sessions (U11s). We are also at capacity for pitch space so looking at a permanent second pitch development'.

Medbourne CC: The club made the following comments:

- 'We have fitted out our disabled toilet so that it can be used for limited female changing. We have one female playing adult cricket'.
- 'Like many other rural clubs attracting and retaining players is difficult, as is sharing the [outfield] playing surface with football'.

North Kilworth CC: The club made the following comments:

- 'We have a refurbishment happening to the club building around changing rooms. We're also very keen to relay our wicket'.
- 'We've been using a self-made wicket for some time, and the county grounds team recently came and advised that it needs properly laying. Getting this completed is a big priority for us, but such a large job is challenging to find funds for'.

6.6 The implications for cricket in Harborough District

Analysis of local supply of cricket pitches in Harborough district indicates the following:

- **Pitch quality:** The quality of pitches is generally rated as at least 'standard'. No pitches are rated as 'poor' quality.
- **Shared usage:** Several sites with cricket pitches are also used for football, which causes problems in the seasonal overlap periods (April-May and August-September).

6.7 Developments since the 2018 PPS

The key developments since the assessment of cricket needs in the 2018 PPS are as follows:

- Expressed demand has increased significantly, with the number of teams playing in the district increasing from 106 in 2017 to 147 in 2021, a 38.7% increase. Whilst the number of adult male teams has fallen slightly, women, junior mixed and girl's teams have all increased.
- Two additional pitches have been recorded since 2017 although there have been no significant facilities improvements.
- Langtons Cricket Club, Lutterworth Cricket Club, Houghton and Thurnby Cricket Club, Illston Abey Cricket Club and Kibworth Cricket Club all have aspirations to improve their facilities using S106 and potentially other funding.

6.8 Assessment of current needs

6.7.1 The basis of the assessment

To assess whether the current supply of pitches is adequate to meet existing demand an understanding of the situation at all sites available to the community needs to be

developed. This is achieved by providing a brief overview for each site, which comprises:

- A comparison between the carrying capacity of a site with how much demand currently takes place there. The carrying capacity of a site is defined as the amount of play it can regularly accommodate without adversely affecting its quality and use. Demand is defined in terms of the number of 'match equivalent sessions' per season at each site.
- An indication of the extent to which pitches are being used during their peak periods.

The site overviews identify the extent to which pitches are:

- **Being overplayed:** Where use exceeds the carrying capacity (highlighted in red in the tables below).
- **Being played to the level the site can sustain:** Where use matches the carrying capacity (highlighted in yellow in the tables below).
- **Potentially able to accommodate some additional play:** Where use falls below the carrying capacity (highlighted in green in the tables below).

In line with ECB guidance, the following assumptions have been made in relation to the number of weekly match equivalents that can be accommodated by different quality pitches:

- Overall capacity is expressed as match equivalents per **season**, as opposed to per **week** for all other pitch types.
- The number of wickets at each site is shown below.
- The supply-demand balance for grass and artificial turf wickets respectively have been assessed separately because there is little or no use of artificial wickets by adult teams, with use confined to junior teams.
- In line with the guidance it has been assumed that a 'good' quality grass wicket will accommodate five matches per season, a 'standard' quality wicket will accommodate four and a 'poor' quality wicket will accommodate no play.
- 'Good' and 'standard' quality non-turf pitches will accommodate 60 matches per season and the additional capacity that they provide is analysed in a separate table.
- Adult teams typically play ten home games per season and junior teams typically play seven home games per season.
- Aspects of each site shaded in red indicate a deficiency, those shaded in yellow indicate that supply and demand are balanced and those shaded in green have some spare capacity.

6.7.2 Grass wickets

<i>Site</i>	<i>Users</i>	<i>Seasonal demand</i>	<i>Seasonal capacity</i>	<i>Seasonal balance</i>	<i>Peak capacity</i>	<i>Peak demand</i>	<i>Peak balance</i>
Billesdon Cricket Club	Billesdon Cricket Club	30	32	+2	1	1	Balanced
Bitteswell Cricket Ground	Bitteswell Cricket Club	20	24	+4	1	1	Balanced
Dixon's Field	Houghton & Thurnby CC Houghton-on-the-Hill CC Fleckney CC <i>Rhino Cricket Club</i>	50	35	-15	1	1	Balanced
Broughton Astley Recn. Grd.	Broughton Astley CC	20	32	+12	1	1	Balanced
Dunton Bassett CC	Dunton Bassett CC	30	60	+30	1	1	Balanced
Fleckney Recreation Ground	Fleckney Village CC	68	70	+2	1	1	Balanced
Gilmorton Cricket Club	Gilmorton Cricket Club	28	32	+4	1	1	Balanced
Great Bowden Recn. Grd.	Bowden Cricket Club	30	32	+2	1	1	Balanced
Great Glen Cricket Club	Great Glen CC	10	28	+18	1	1	Balanced
Gumley Cricket Club	Gumley Cricket Club	20	24	+4	1	1	Balanced
Hallaton Recreation Ground	<i>Barkby United CC</i>	24	24	Balanced	1	1	Balanced
Houghton and Thurnby CC	Houghton & Thurnby CC	30	50	+20	1	1	Balanced
Illston Abey CC	Illston Abey CC	30	40	+10	1	1	Balanced
Kibworth Cricket Club	Kibworth Cricket Club	80	125	+45	2	2	Balanced
Langtons Cricket Club	Langtons Cricket Club	30	40	+10	1	1	Balanced
Laughton and Mowsley CC	Laughton and Mowsley CC Fleckney CC	10	16	+6	1	1	Balanced
Little Bowden Recreation Ground	Harborough South CC	10	24	+14	1	1	Balanced

Harborough District Council
Playing Pitch and Outdoor Sports Facilities Strategy

Lutterworth Cricket Club	Lutterworth Cricket Club	110	70	-40	1	1	Balanced
Market Harborough CC	Market Harborough CC	20	60	+40	1	1	Balanced
Marston Trussell Cricket Ground	Langtons Cricket Club	10	32	+22	1	1	Balanced
Medbourne Cricket Club	Medbourne CC	10	24	+14	1	1	Balanced
Neville Holt Cricket Club	Neville Holt Cricket Club	10	24	+14	1	1	Balanced
North Kilworth CC	North Kilworth CC	20	16	-4	1	1	Balanced
Swinford Cricket Ground	Oakfield & Rowland CC	30	40	+10	1	1	Balanced
Tilton and Lowesby CC	Tilton and Lowesby CC	10	16	+6	1	1	Balanced
Ullesthorpe Playing Field	Lutterworth Cricket Club	44	24	-20	1	1	Balanced
TOTALS	-	784	876	+92	27	27	Balanced

The supply-demand balance of grass cricket pitches by sub-area is as follows:

Sub-area	Seasonal capacity	Seasonal demand	Seasonal balance	Peak capacity	Peak demand	Peak balance
West	262	264	-2	7	7	Balanced
Middle	210	174	+36	7	7	Balanced
East	404	346	+58	12	12	Balanced
HARBOROUGH	876	784	+92	26	26	Balanced

The key findings are as follows:

- There is a collective seasonal spare capacity of 92 match equivalent sessions.
- Four sites show a seasonal deficit although peak usage in the district is balanced.

6.7.3 Non-turf pitches

<i>Site</i>	<i>Users</i>	<i>Seasonal demand</i>	<i>Seasonal capacity</i>	<i>Seasonal balance</i>	<i>Peak capacity</i>	<i>Peak demand</i>	<i>Peak balance</i>
Billesdon Cricket Club	Billesdon Cricket Club	28	60	+32	1	1	Balanced
Bitteswell Cricket Ground	Bitteswell Cricket Club	14	60	+46	1	1	Balanced
Dixon's Field	Houghton & Thurnby CC	56	60	+4	1	1	Balanced
Great Bowden Recn. Grd.	Bowden Cricket Club	35	60	+25	1	1	Balanced
Dunton Bassett CC	Dunton Bassett CC	14	0	-14	0	1	-1
Fleckney Recreation Ground	Fleckney Village CC	10	60	+50	1	1	Balanced
Great Glen Cricket Club	Great Glen CC	10	60	+33	1	1	Balanced
Illston Abey Cricket Club	Illston Abey CC	14	60	+46	1	1	Balanced
Kibworth Cricket Club	Kibworth CC	91	120	+29	2	2	Balanced
Langtons Cricket Club	Langtons CC	49	60	+11	1	1	Balanced
Market Harborough CC	Market Harborough CC	21	60	+39	1	1	Balanced
Medbourne Cricket Club	Medbourne CC	49	60	+11	1	1	Balanced
Swinford Cricket Ground	Oakfield & Rowland CC	10	60	+40	1	1	Balanced
TOTALS	-	401	780	+379	13	14	-1

The supply-demand balance of artificial turf cricket wickets by sub-area is as follows:

<i>Sub-area</i>	<i>Seasonal capacity</i>	<i>Seasonal demand</i>	<i>Seasonal balance</i>	<i>Peak capacity</i>	<i>Peak demand</i>	<i>Peak balance</i>
West	120	24	+96	1	2	-1
Middle	180	105	+75	3	3	Balanced
East	480	272	+208	8	8	Balanced
HARBOROUGH	780	401	+379	12	13	-1

The key findings are as follows:

- There is collective seasonal spare capacity of 208 match equivalent sessions.
- There is a peak time deficit of 1 match equivalent session in both the West sub-area and the district as a whole, due to the 'poor' quality wicket at Dunton Bassett Cricket Club.

6.8 Assessment of future needs

6.8.1 Population growth

The ONS 2018 sub-national population projections forecast a population of 104,839 by 2031, an increase of 9,302 (or 9.7%). Comparison of the projections for 2020 and 2031 shows that the percentage of people aged under 50 falls from 55.6% to 53.2%, with proportionate population increases amongst the over 50s.

6.8.2 Potential changes in demand

Changes in demand for cricket in the future can be modelled on a trend-based projection. The ECB's most recent pre-covid '*National Cricket Playing Survey*' (2019), which reflects club and league cricket only (it does not include Women's Soft Ball Cricket, or junior cricket) identified:

- A 1.2% increase in player numbers between 2018 and 2019.
- Of the 822,000 players nationally, 229,000 are 'core' players (playing at least 12 weeks per season), 353,000 are 'occasional' players (playing between three and 11 weeks per season) and 238,000 are 'cameo' players (playing one or two weeks per season).
- 81.4% of completed fixtures were played in 2019, 5.4% of completed fixtures were abandoned and 7.5% of completed fixtures were cancelled.
- Compared with 2018, conceded fixtures decreased by 15% to 5.7% of completed fixtures and short-sided game cancellations decreased by 11% in 2019 to 11.7% of fixtures.

6.8.3 Site-specific pressures

Harborough District Council needs to identify sites upon which it can deliver its housing targets. Whilst planning policy offers protection to playing pitches, some sites may be vulnerable unless it can be proved that they are needed to accommodate existing or future shortfalls in supply or serve some other green space functions. At present, the analysis in section 6.7 above shows that all sites are used to capacity in the peak periods, so the case for retention is strong.

6.8.4 Potential changes in supply

Lutterworth Cricket Club has aspirations to move its second site to Lutterworth Grammar School and is in the process of relaying the square which has been disused. Use of the Ullesthorpe site for cricket will be discontinued as a result due to football demand. There are proposals to provide additional grass football pitches on the outfield of Illston Abey Cricket Club, which might impact on cricket usage.

6.8.5 Existing spare capacity

There is no effective spare capacity at peak times based on the assessment.

6.8.6 Future cricket pitch needs

Future cricket pitch needs to 2031 are modelled below using ‘Team Generation Rates’ (TGRs), which identify how many people in a specified age group in the district generate one team. These are then applied to projected changes in population to identify the likely number of teams in the future. The projections include provision for the unmet demand identified by local clubs.

Team type	Age range	Current population	Current teams	TGR	Population 2031	Teams 2031	Extra teams
Adult males	18-55	21,074	61	1: 345	21,728	63	+2
Adult females	18-55	21,786	12	1: 1,816	22,558	12	0
Junior mixed	7-17	12,916	78	1: 166	12,785	77	-1
Junior females	7-17	6,264	11	1: 569	6,290	11	0

6.8.7 Sport England’s Playing Pitch Calculator

A supplementary way of modelling future playing pitch needs is Sport England’s Playing Pitch Calculator. The model applies Team Generation Rates to the projected population increases to estimate the additional pitch needs arising and in addition generates capital and revenue cost estimates for providing the extra pitches. The model needs to be applied alongside an assessment of the various options for meeting unmet demand but provides helpful context for the site-specific supply-demand assessment and the TGR calculations above. The results of applying the Calculator for cricket needs arising from major planned developments in Harborough are set out below.

Development	Number of dwellings	Population	Number of pitches	Changing rooms	Capital costs (£)	Annual costs (£)
East of Lutterworth Strategic Development Area	1,260	2,772	0.90	1.79	£597,055	£55,591
Overstone Park, Market Harborough	600	1,320	0.43	0.85	£284,306	£26,472
East of Blackberry Grange, Market Harborough	350	770	0.25	0.50	£165,854	£15,443
Arnesby Road, Fleckney	130	286	0.09	0.19	£61,609	£5,736
Burnmill Farm, Market Harborough	128	282	0.09	0.19	£60,739	£5,655
Scraftoft North Strategic Development Area	1,200	2,640	0.85	1.71	£568,619	£52,944

TOTALS	3,668	8,070	2.61	5.23	£1,738,182	£171,841
---------------	--------------	--------------	-------------	-------------	-------------------	-----------------

6.8 Key findings and issues

6.9.1 What are the main characteristics of current supply and demand?

- **Cricket clubs:** There are 23 affiliated clubs in Harborough district, who collectively run 59 men's teams, 10 women's teams, 65 junior boy's teams and eight junior girl's teams.
- **Pitch quality:** The quality of pitches is generally rated as at least 'standard'. No pitches are rated as 'poor' quality.
- **Shared usage:** There are dual use issues at some sites with football including Great Glen Recreation Ground, Medbourne Sports Club, North Kilworth Sports Club and Ullesthorpe Playing Field.

6.9.2 Is there enough accessible and secured community use to meet current demand? **NO**

- **Seasonal pitch capacity:** There is a collective seasonal spare capacity of 102 match equivalent sessions on grass wickets and 322 match equivalent sessions on artificial turf wickets, although three sites show a seasonal deficit although peak usage in the district is balanced.
- **Peak time pitch capacity:** Peak time grass pitch capacity is balanced, although the 'poor' quality non-turf pitch at Dunton Bassett Cricket Club is assessed as having no capacity, which creates a peak time deficit for non-turf pitches.

6.9.3 Is the accessible provision of suitable quality and appropriately maintained? **MOSTLY** - The non-turf pitch at Dunton Bassett CC is rated as 'poor' quality,

All pitches are at least 'standard' quality, but the outfield at Gumley CC is 'poor' as are the pavilions at Laughton & Mowsley CC, Swinford Cricket Ground and Tilton and Lowesby CC and the practice nets Bitteswell Cricket Ground and Gilmorton Cricket Club.

6.9.4 What are the main characteristics of future supply and demand?

- **Population growth:** The ONS 2018 sub-national population projections forecast a population of 104,839 by 2031, an increase of 9,302 (or 9.7%). Comparison of the projections for 2020 and 2031 shows that the percentage of people aged under 50 falls from 55.6% to 53.2%, with proportionate population increases amongst the over 50s.
- **Changes in demand:** Projecting future need based on current demand patterns, including the estimate of current unmet demand by local clubs is a reasonable basis for forecasting.

- **Changes in supply:** There are no known potential changes to cricket pitch supply.
- **Existing spare capacity:** There is no peak time spare capacity as present.
- **Future needs:** Based upon the above factors, there will be a small net increase in demand for cricket by 2031, equivalent to one team and 13 seasonal match equivalent sessions.

6.9.5 Is there enough accessible and secured provision to meet future demand? **NO**
- There is no effective spare capacity at present.

There is insufficient provision to meet future demand at present, but additional capacity could be created in four ways:

- **New pitch provision:** Securing the provision of additional pitches at part of new housing developments in the district.
- **Pitch quality improvements:** If the 'standard' quality pitches at 19 sites were all upgraded to 'good' quality, it would add 144 seasonal match equivalent sessions to seasonal capacity.
- **Using pitches on school sites with no community use:** There are 12 grass wickets and three artificial turf wickets on school sites with no community use at present. Gaining access to these would provide 60 seasonal match equivalent sessions on grass pitches and 180 match equivalent sessions on artificial turf pitches to the available supply (less any use by the schools themselves), which would be particularly useful for junior cricket.

6.10 Scenario Testing

6.10.1 Introduction

Based upon the key findings and issues identified above, a number of scenarios have been examined, to identify the optimum approach to addressing needs.

6.10.2 Scenario 1: Increasing capacity by improving 'standard' quality pitches at sites where there is a capacity deficit to 'good' quality.

- **Rationale:** The pitches at North Kilworth CC and Ullesthorpe Playing Field are both rated as 'standard'. Upgrading the pitches to 'good' quality would enable each wicket to accommodate up to five matches per season as opposed to four, thereby reducing the deficits.
- **Advantages:** The advantages of this scenario are as follows:
 - An additional four seasonal match equivalent sessions would be created at North Kilworth, eliminating the capacity deficit.

- An additional six match equivalent sessions would be created at Ullesthorpe Playing Field, reducing the capacity deficit.
- **Disadvantages:** The only disadvantage of this scenario is that additional investment would be required to improve maintenance standards.
- **Conclusions:** This scenario offers an attractive solution to meeting unmet cricket pitch demand in Harborough district.

6.10.3 Scenario 2: Improvement of the non-turf wicket at Dunton Bassett CC

- **Rationale:** The non-turf wicket at Dunton Bassett Cricket Club is rated as 'poor' quality and so in line with ECG guidance, it is regarded as having no capacity. If the surface is upgraded to 'good' or 'standard' quality, it will accommodate up to 60 seasonal match equivalent sessions, eliminating the current seasonal deficit of 14 matches.
- **Advantages:** The advantages of this scenario are as follows:
 - The pitch can be upgraded at relatively low cost (£8,000).
 - Pitch maintenance costs are relatively low compared with natural turf.
- **Disadvantage:** The only disadvantage of this scenario is that non-turf wickets are used primarily for junior matches, so it would have limited impact on addressing capacity issues in relation to adult play.
- **Conclusions:** This scenario should be examined further.

6.10.4 Scenario 3: Installation of additional non-turf wickets

- **Rationale:** Installing non-turf pitches at Lutterworth Cricket Club, North Kilworth Cricket Club and Ullesthorpe Recreation Ground, that are currently used to over capacity would help to expand seasonal carrying capacity for junior play.
- **Advantages:** The advantages of this scenario are as follows:
 - The pitches can be installed at relatively low cost (£8,000 - £10,000 per pitch).
 - They have the potential to accommodate 60 match equivalent sessions per season.
 - Pitch maintenance costs are relatively low compared with natural turf.
- **Disadvantages:** The disadvantages of this scenario are as follows:
 - Non-turf wickets are used primarily for junior matches, so they would have limited impact on addressing capacity issues in relation to adult play.
 - Unless there is space to accommodate non-turf pitches away from the main square, they would not address peak-time deficiencies because they could not be used simultaneously with the grass wickets.

- **Conclusions:** This scenario should be examined further on a site-by-site basis.

6.10.5 Scenario 4: Negotiating access to school pitches

- **Rationale:** Lutterworth Grammar School has two grass pitches, collectively providing 12 wickets. Whilst these are currently not of club standard quality, investing in additional maintenance would provide an extra pitch for Lutterworth Cricket Club, to spread capacity from the currently overused grass pitches at the club.
- **Advantages:** The advantages of this scenario are as follows:
 - An additional 60 seasonal match equivalent sessions would be created if the pitches are maintained to a 'good' standard.
 - The collective seasonal deficit of 40 match equivalent sessions on grass wickets at the Club's main site would be eliminated.
 - Two additional peak time match equivalent sessions would be created, to cater for additional future demand.
 - There would be opportunities to establish closer school-club links.
- **Disadvantages:** The disadvantages of this scenario are as follows:
 - The pitches are already used by the school so the overall capacity is reduced.
 - The site does not have a formal Community Use Agreement, so continued access would need to be secured.
- **Conclusions:** This scenario offers a good option for meeting additional cricket pitch demand from Lutterworth Cricket Club.

6.11 Policy recommendations

6.11.1 Introduction

The recommendations in relation to cricket are made in the context of the National Planning Policy Framework (NPPF), which stipulates that existing open space including playing pitches, should not be built upon unless:

- An assessment has taken place which has clearly shown the open space to be surplus to requirements, or;
- The loss resulting from the proposed development would be replaced by equivalent or better provision in terms of quantity and quality, in a suitable location, or;
- The development is for alternative sport and recreation provision, the needs for which clearly outweighs the loss.

6.11.2 Protect

Recommendation 1 - Safeguarding existing provision: The Harborough PPS comprises a robust and evidence-based assessment of current and future needs for cricket in the district. The PPS identifies a need for all current cricket pitch sites to be retained and protected on the basis of the specific identified roles that each can play in delivering the needs of the sport in Harborough district both now and in the future. It is therefore recommended that planning policies continue to support the retention of all sites based upon the evidence in the PPS. If any pitch sites do become the subject of development proposals, this will only be permissible if they are replaced and meet policy exception E4 of Sport England's Playing Fields Policy. This states that 'the playing field or playing fields which would be lost as a result of the proposed development must be replaced by a playing field or playing fields of an equivalent or better quality and of equivalent or greater quantity, in a suitable location and subject to equivalent or better management arrangements, prior to the commencement of development'

6.11.3 Enhance

Recommendation 2 - Enhancing existing capacity: The pitches at North Kilworth CC and Ullesthorpe Playing Field are both rated as 'standard'. Upgrading the pitches to 'good' quality would enable each wicket to accommodate up to five matches per season as opposed to four, thereby reducing the deficits. The non-turf wicket at Dunton Bassett Cricket Club is rated as 'poor' quality and so in line with ECG guidance, it is regarded as having no capacity. If the surface is upgraded to 'good' or 'standard' quality, it will accommodate up to 60 seasonal match equivalent sessions. It is recommended that the site owners should be supported to apply for external funding for facility enhancements, including developer contributions (see below) where the usage capacity would be enhanced.

Recommendation 3 - Developer contributions and external funding (enhancements): Most of the additional demand for cricket arising from the proposed housing development in Harborough to 2031 can be accommodated through enhancements to existing pitches and facilities. It is recommended that the site-specific action plan in the Harborough PPS be used as the basis for determining facility enhancements that demonstrably relate to the scale and location of specific developments and that an appropriate level of financial contributions be sought under S106 arrangements, on-site provision in larger developments and/or through applications for external funding to cover the capital and revenue implications of the enhancements.

6.11.4 Provide

Recommendation 4 - Developer contributions and external funding (new provision): Some of the extra demand for cricket in particular arising from the proposed housing development in Harborough district to 2031, may need to be accommodated through the provision of new facilities, once options for improving capacity at existing sites have been explored. The pavilions at Laughton and Mowsley CC, Swinford Cricket Ground and Tilton and Lowesby CC and the practice nets Bitteswell Cricket Ground and Gilmorton Cricket Club are all poor quality. It is recommended that an appropriate level of financial contributions be sought under

S106 arrangements, and/or through applications for external funding to cover the capital and revenue implications of the new provision to expand capacity.

6.12 Action Plan

6.12.1 Introduction

In the context of the high-level recommendations above, the tables below set out the cricket action plan to guide the implementation of the strategy. The abbreviations stand for HDC - Harborough District Council, ECB - England and Wales Cricket Board and LCB - Leicestershire Cricket Board. The capital cost estimates are based upon Sport England's 'Facility Costs - Second Quarter of 2021' (2021).

6.12.2 Key strategic actions

Issues	Action	Lead	Partners	Resources	Priority
Securing developer contributions	Ensure that policy provision is made to secure developer contributions towards new and improved cricket facilities.	HDC	Developers Local clubs	Determined by Sport England's New Development Calculator	High

6.12.3 Site specific actions

Site	Issues	Action	Lead	Partners	Resources	Priority
Billesdon Cricket Club	No current issues.	-	-	-	-	-
Bitteswell Cricket Ground	No current issues.	-	-	-	-	-
Dixon's Field	Grass pitches used to over capacity on a seasonal basis.	Reschedule fixtures to sites with spare capacity	Houghton & Thurnby CC	Fleckney Village CC	-	High
Broughton Astley Recn. Grd.	No current issues.	-	-	-	-	-

Site	Issues	Action	Lead	Partners	Resources	Priority
Dunton Bassett CC	'Poor' quality non-turf pitch	Re-surface non-turf pitch	Dunton Bassett CC	-	£8,000	High
Fleckney Recn. Ground	No current issues.	-	-	-	-	-
Gilmorton Cricket Club	'Poor' quality practice nets.	Provide new nets	Gilmorton CC	-	£20,000	Medium
Great Bowden Recn. Grd.	No current issues.	-	-	-	-	-
Great Glen CC	No current issues.	-	-	-	-	-
Gumley Cricket Club	<ul style="list-style-type: none"> • Poor quality outfield • Poor quality changing • No secured community access 	<ul style="list-style-type: none"> • Improve outfield • Improve changing Negotiate Community Use Agreement.	Gumley Cricket Club	Site owner	£5,000 for outfield works TBC for changing	Medium

Harborough District Council
Playing Pitch and Outdoor Sports Facilities Strategy

Hallaton Recn Ground	No current issues.	-	-	-	-	-
Houghton and Thurnby CC	'Poor' quality changing	Improve changing	Houghton and Thurnby CC	HDC, ECB	TBC	High
Illston Abey CC	Proposed provision of football pitches on the outfield	Assess the impact of football on cricket usage	HDC	FA, ECB	-	High
Kibworth Cricket Club	<ul style="list-style-type: none"> 'Poor' quality second changing pavilion 'Poor' quality practice nets 	<ul style="list-style-type: none"> Refurbish second changing pavilion Provide new practice nets 	Kibworth Cricket Club	-	TBC for changing £20,000 for practice nets	High
Langtons Cricket Club	Proposal to expand changing facilities	Expand changing	Langtons Cricket Club	-	TBC	High
Laughton and Mowsley CC	'Poor' quality changing	Improve changing	Laughton and Mowsley CC	-	TBC	Medium
Little Bowden Recn. Ground	No current issues.	-	-	-	-	-
Lutterworth Cricket Club	Grass pitches used to over capacity on a seasonal basis.	Develop a second pitch at Lutterworth Grammar School	Lutterworth CC	Lutterworth Grammar School	£5,000 per season for maintenance	High
Market Harborough CC	No current issues.	-	-	-	-	-
Marston Trussell Cricket Ground	No current issues.	-	-	-	-	-
Medbourne Cricket Club	No current issues.	-	-	-	-	-
Neville Holt Cricket Club	No secured community access	Negotiate Community Use Agreement.	Neville Holt Cricket Club	Site owner	-	Medium
North Kilworth CC	Grass pitches used to over capacity on a seasonal basis.	Reschedule fixtures to sites with spare capacity	North Kilworth CC	-	-	High
Swinford Cricket Ground	'Poor' quality changing	Improve changing	Oakfield and Rowland CC	-	TBC	Medium
Tilton and Lowesby CC	'Poor' quality changing	Improve changing	Tilton and Lowesby CC	-	TBC	Medium
Ullesthorpe Playing Field	Grass pitches used to over capacity on a seasonal basis.	Reschedule all fixtures new pitch at Lutterworth GS	Lutterworth CC	-	-	High