

## 5 FOOTBALL PITCH NEEDS

### 5.1 Introduction

The key stakeholders delivering football in Harborough district are:

- **Leicestershire and Rutland FA:** All football clubs in the district affiliate to the Leicestershire and Rutland FA, which administers the game in the county.
- **FA-affiliated clubs:** There are 23 FA-affiliated clubs in Harborough district, who collectively run 62 men's teams, two women's teams, 53 youth male (11v11) teams, 10 youth female (11v11) teams, 39 youth male (9v9) teams, seven youth female (9v9) teams, 35 mixed mini-soccer (7v7) teams, six female mini-soccer 7v7 teams and 53 mixed mini-soccer (5v5) teams.
- **Pitch providers:** A range of organisations provide football pitches in the district, in particular the council, clubs and schools.

### 5.2 Strategic context

#### 5.2.1 The Football Association

'Time for Change: The FA Strategy 2020-2024' (2020) has a number of targets with important implications for football and its facilities needs at grassroots level (see box below).

- **Equal opportunities for every girl:** 'We will work in partnership with schools and teachers to provide tailored programmes and training. We will ensure all girls (5-16 years of age) have access to an inclusive club with an appropriate competitive pathway (including our innovative Wildcats programme)'.
- **Deliver 5,000 quality pitches:** 'The poor quality and availability of our pitches remains the number one frustration in grassroots football and an embarrassment for our country. Significantly improving the quality and durability of our grass pitches and building more artificial pitches is a necessity. To achieve this ambition by 2024, we will work through our delivery partner the Football Foundation, to build and improve 5,000 pitches across England, including using new digital methods to support ground staff up and down the country'.

The Football Association's 'National Facilities Strategy' (2020) also contains a number of longer-term (10-year) facilities-related targets:

- 1,000 new '3G' football turf pitches in a mix of sizes and settings, dependent upon local needs, all aimed at enhancing the quality of the playing experience.
- 20,000 improved natural-turf pitches: to help address drop-off due to a poor playing experience.
- 1,000 new changing pavilions/clubhouses all linked to priority sites.
- Small-sided facilities to grow the small-sided game for teams and leagues, recreational and informal play.

## 5.2.2 The Local Football Facility Plan

The Football Foundation has produced a Local Football Facility Plan (LFFP) for each local authority area in England. LFFPs are a portfolio of priority projects for potential investment - it is not a detailed demand and supply analysis of all pitch provision in a local area. It cannot be used as a replacement for a Playing Pitch Strategy (PPS) and it will not be accepted as an evidence base for site change of use or disposal. LFFPs do however build on available/existing local evidence and strategic plans and may adopt relevant actions from a PPS and/or complement these with additional investment priorities. The national funding partners have significantly increased investment to accelerate efforts to deliver more and better football facilities for the grassroots game. The purpose of the '*Harborough LFFP*' (2020) is to identify the priority projects for potential investment in the district. It will be updated to reflect the findings of the PPS, but the key existing findings are below:

### ***Overall priorities for football in Harborough***

- Increasing access and provision of '3G' football turf pitches for training and match play.
- Improving changing room facilities for adult football.
- Improving or enhancing facilities to support women and girls' football.
- Providing appropriate facilities to support participants within BAME communities.
- Working with clubs and partners to provide access to appropriate high-quality facilities.
- Developing or enabling access to suitable facilities countywide to support the development of futsal.
- Providing opportunities to support informal provision and recreational play.

### ***3G' football turf pitches:***

- There are currently three full-sized (11v11) '3G' football turf pitches in Harborough district.
- There are four small-sided '3G' football turf pitches in the district.
- There is a current requirement for one additional full-sized '3G' football turf pitch in the district, with Lutterworth the priority location.

### ***Grass pitches:***

- Five priority projects for potential investment were identified. Prioritisation was informed by local partners based on a rationale of selecting sites in the poorest condition that are currently/potentially well-utilised and which reflect the strategic focus to improve football participation.
- Potential sites to meet the shortfall are identified as Kibworth Town FC, Fleckney Sports and Leisure Centre, Harborough Town Community Football Ground, Gilmorton Playing Fields and Symington's Recreation Ground.

### ***Changing rooms/pavilions/clubhouses:***

Seven priority projects for potential investment were identified for a new '3G' pitch in Lutterworth, Kibworth Town FC, Fleckney Sports and Leisure Centre, Gilmorton Playing Fields, Lutterworth Athletic FC, Symington's Recreation Ground and Thomas Estley Community College.

### 5.2.3 Neighbouring local authorities

Football needs assessments in the neighbouring local authorities highlighted the following cross-boundary issues:

#### **Rugby**

- The *'Rugby Playing Pitch Strategy'* (2013) identified a current shortfall of youth football pitches and a projected future deficit for all pitch types.
- The *'Rugby Local Football Facility Plan'* (2018) notes a shortfall of three '3G' football turf pitches. Four sites are prioritised for grass pitch improvements all of which are close to the Harborough boundary.

#### **Blaby**

- The *'Blaby Playing Pitch Strategy Assessment'* (2020) identifies that 'current supply of football pitch provision is insufficient with shortfalls evident on adult and youth 11v11 pitch formats. When considering future demand, these shortfalls will worsen on all formats, with shortfalls emerging on mini pitch types'.
- The *'Blaby Local Football Facility Plan'* (2019) notes a shortfall of six '3G' football turf pitches. Nine sites have been prioritised for grass pitch improvements one of which (Countesthorpe Leysland Community College) is close to the boundary with Harborough.

#### **Oadby and Wigston**

- The *'Oadby and Wigston Playing Pitch Strategy'* (2015) identifies a shortfall of youth and mini-soccer pitches.
- The *'Oadby and Wigston Local Football Facility Plan'* (2019) notes that there are sufficient full-sized '3G' football turf pitches. The new 3G pitch at Oadby Beauchamp already has the majority of regular booking slots filled. Six sites have been prioritised for grass pitch improvements one of which (Coombe Park) is close to the boundary with Harborough.

#### **Leicester**

- The *'Leicester City Council Playing Pitch Strategy'* (2017) identifies a shortfall in all types of grass football pitch in the East Sub-area adjacent to Harborough district. There is also an identified shortfall of two '3G' football turf pitches.
- The *'Leicester Local Football Facility Plan'* (2020) notes a shortfall of two '3G' football turf pitches, with proposed additional provision in the north-east of the city, close to the Harborough boundary. 16 sites have been prioritised for grass pitch improvements one of

which (Judgemeadow Community College) is close to the boundary with Harborough. Judgemeadow is currently used by several local clubs in addition to lots of social groups. Whilst it borders HDC, it borders large chunks of rural land and draws its users almost exclusively from Evington, Stoneygate and Oadby.

### **Charnwood**

- The '*Charnwood Playing Pitch Strategy*' (2018) identifies that there is spare capacity of all types of grass football pitches in the Rural South-East sub-area that adjoins Harborough district.
- The '*Charnwood Local Football Facility Plan*' (2019) notes a shortfall of three '3G' football turf pitches, with one proposed facility (at Cedars Academy, Birstall) whilst technically within a mile or so of the border with HDC, is north of Leicester and far from the population centres in Harborough.
- 13 sites have been prioritised for grass pitch improvements none of which are close to the boundary with Harborough.

### **Melton**

- Melton Borough Council is working on an updated Playing Pitch Strategy for the borough in 2022. The '*Melton Playing Pitch Strategy*' (2014) identifies that although there is a shortfall of one youth pitch to meet future demand in the East Melton area, but that with spare capacity elsewhere there is sufficient pitch space to meet all future needs.
- The '*Melton Local Football Facility Plan*' (2019) notes a shortfall of two '3G' football turf pitches in Melton. Neither of the proposed sites is in the vicinity of the boundary with Harborough. Three sites have been prioritised for grass pitch improvements none of which are close to the boundary with Harborough.

### **Rutland**

- Rutland County Council is working on an updated Playing Pitch Strategy for the county in 2022. The '*Rutland Sports and Recreation Strategy*' (2015) identifies that 'the overall level of provision for football in Rutland is approximately in balance, but that there are a small number of 'spare' mini pitches' and that there is 'sufficient playing field space in secure community use for football to cater for matches at the peak times up to 2036'.
- The '*Rutland Local Football Facility Plan*' (2019) notes a shortfall of one '3G' football turf pitch in Oakham, although few players would travel the distance from the main population centres of Harborough to Oakham. Three sites have been prioritised for grass pitch improvements, including two in Oakham.

### **Corby**

- The '*Corby Borough Council Playing Pitch Strategy and Action Plan*' (2017) identifies sufficient current supply of all grass pitches and '3G' football turf pitches except for youth 11v11 pitches, but a deficiency of all types of pitch by 2031.

- The *'Corby Local Football Facility Plan'* (2020) notes a shortfall of one '3G' football turf pitch in Corby. Five sites have been prioritised for grass pitch improvements, all of which are close to the East sub-area of Harborough but host clubs playing in the Northamptonshire leagues.

### **Kettering**

- The *'Kettering Borough Council Playing Pitch Strategy Needs Assessment Report'* (2020) identifies a current and future shortfall in all types of football pitch in the borough, although there is no football activity in the 'Rural sub-area' which adjoins Harborough district.
- The *'Kettering Local Football Facility Plan'* (2020) notes a shortfall of two '3G' football turf pitches. Six sites have been prioritised for grass pitch improvements, none of which are close to the boundary with Harborough district.

### **Daventry:**

- The *'Daventry Playing Pitch Strategy'* (2018) identifies spare capacity for all types of football pitch in the 'East sub-area' adjacent to Harborough district, although a shortfall of four pitches is projected by 2029.
- The *'Daventry Local Football Facility Plan'* (2020) notes a shortfall of one '3G' football turf pitch in the district. Seven sites have been prioritised for grass pitch improvements, including one at Crick Athletic FC that is close to the boundary with Harborough.

## **5.2.4 Findings of the 2018 Harborough PPS**

The key findings of the *'Harborough Playing Pitch Strategy'* (2018) in relation to football are below:

- 'Football in Harborough is characterised by a small number of large clubs, with the largest, Harborough Town having 46 teams, almost 26% of all the football teams in the district. The main clubs' sites are largely club controlled and the small number of single team clubs appear to be marginalised, finding bookings difficult'.
- 'The pattern of participation is similar to the county and national picture, with most players being male across all of the age groups and the majority of teams are in the mini and youth age groups. Girls football is increasing, but most play in mixed teams. In the season 2016/17 there were no senior women's teams in the district'.
- 'Most of the clubs draw their members primarily from Harborough district, with only Houghton Rangers/Juniors identifying that most of their members live outside of the district, in Leicester.
- 'A very high percentage of mini and youth football matches take place at the same time, meaning that there is a high peak demand for match pitch space. Only the senior game is more evenly spread, with around 65% of matches at peak times'.

- 'Most training takes place on AGPs, using small and large size pitches, both 3G short piles and sand based/dressed. Several teams use AGPs outside of the district for their training'.
- 'There appears to be a strong growth in the game, with an increase the number of teams from 176 in the season 2016-17 to 214 registered in 2017-18'.
- 'There is just a sufficient number of grass pitches in secure community use for most of the age groups across most of the district, but there is little spare capacity. The Middle sub area is least well provided in relation to the 7v7 through to the 11v11 Youth formats, but there are also shortfalls at peak time in the West, even taking into account pitches on school sites which are not in secure community use'.
- 'There is one full size AGP which is on the FA Register and one small size suitable for 5v5 and 7v7. These are used for both matches and training. As almost all training takes place on AGPs, the determining factor for pitch space is the peak demand'.
- 'There is a lack of secure pitch sites in the West, where Thomas Estley Community College and Lutterworth College are both important in the network of sites used by the community.
- 'The agreed quality for most of the pitches in the district is 'Standard'. However there are poor quality pitches and if these could be improved, this would help the overall capacity for football across the week, although not address the lack of capacity at peak time. The only good quality pitches are at Lutterworth Football Academy and the senior pitch at Northampton Road'.
- 'There is expected to be additional teams as there is major housing growth planned around Market Harborough, Lutterworth and Scraftoft. Most demand will be from the mini and youth elements where there is expected to be both an increase in participation rates and growth caused by new housing. The girls' and women's game is likely to grow strongly, but this is from a low base and the actual number of teams by 2031 is still expected to be relatively small compared to the male game'.
- 'There will be insufficient pitch space to cater for the planned growth in Market Harborough and although theoretically there may be sufficient capacity in the Lutterworth and Scraftoft areas to meet the demand, the location of the housing developments compared with the existing pitch sites, means that new provision should be made on site for each of the SDAs'.
- 'The current proposed stadium pitch at Harborough Town FC and at Broughton Astley adjacent to Thomas Estley College should be developed'.

### 5.2.5 Implications of the strategic context

The implications of the strategic context for football in Harborough district are as follows:

- **'3G' pitches:** The increased dependence on '3G' football turf pitches for youth football and mini-soccer matches will place stresses on existing provision in the district.
- **Neighbouring areas:** There is some evidence of deficiencies in pitch provision in neighbouring areas which are likely to impact on Harborough.
- **Local Football Facility Plan:** The LFFP provides a helpful framework within which to identify priority developments.
- **The 2018 PPS:** The 2018 PPS constitutes a valuable benchmark against which to measure change in the intervening period.

### 5.3 **Football pitch demand in Harborough district**

#### 5.3.1 **Expressed demand**

A questionnaire survey was circulated to all FA-affiliated football clubs in Harborough. The following seven clubs responded, collectively representing 140 teams, or 57.4% of all the 244 affiliated teams in the district.

- Borough Alliance FC
- Glen Villa FC
- Harborough Town FC
- Houghton Rangers FC
- Kibworth Town FC
- Lutterworth Town FC
- Medbourne FC

The following clubs affiliate to the Leicestershire and Rutland FA and play in Harborough district in season 2022/23. Clubs based outside the district but using Harborough pitches are shown in italics, as are any pitches used by Harborough-based clubs that are outside the district:



Harborough District Council  
Playing Pitch and Outdoor Sports Facilities Strategy

<i>Club</i>	<i>Match venue(s)</i>	<i>Training venue(s)</i>	<b>Adult teams</b>	<b>Youth (11v11)</b>	<b>Youth (9v9)</b>	<b>Mini (7v7)</b>	<b>Mini (5v5)</b>
<b>AFC North Kilworth</b>	North Kilworth SC	-	2	2	2	2	1
<b>Aylestone St. James FC</b>	Aylestone Rugby Club	Aylestone Rugby Club	1	-	-	-	-
<b>Borough Alliance JFC</b>	Symington's Recn. Grd. Robert Smyth Academy	Symington's Recn. Grd.	3	6	5	6	3
<b>Brooke House College</b>	Bowden's Park	Bowden's Park	4	2	-	-	-
<b>Dunton &amp; Broughton Utd</b>	D&B Rangers FC Broughton Astley '3G' Thomas Estley College Frolesworth Road Rec.	D&B Rangers FC Broughton Astley '3G'	6	6	5	7	2
<b>D &amp; B Utd Ladies</b>	Broughton Astley '3G'						
<b>FC Cherry Tree</b>	Bowden's Park	-	1	-	-	-	-
<b>Fleckney Athletic FC</b>	Fleckney Sports Centre Lodge Road Recn. Grd.	Fleckney Sports Centre	2	5	2	2	1
<b>Fleckney Masters FC</b>	Fleckney Sports Centre	Fleckney Sports Centre	1	-	-	-	-
<b>Gilmorton FC</b>	Gilmorton Playing Field	Gilmorton Playing Field	1	-	-	-	-
<b>Glen Villa FC</b>	Great Glen Recn. Ground	Fleckney Sports Centre	3	3	2	1	-
<b>Harborough Town FC</b>	Bowden's Park	Bowden's Park	13	19	9	5	5
<b>Houghton Rangers FC</b>	Houghton Field	Houghton Field	4	2	1	2	1
<b>Kibworth Town FC</b>	Bird's Barn Kibworth Mead Academy	Bird's Barn Kibworth Mead Academy	7	13	7	4	3
<b>Lutterworth Athletic FC</b>	Lutterworth Soccer Ctre.	Lutterworth Soccer Ctre.	7	11	4	1	1
<b>Lutterworth Town FC</b>	Dunley Way Fields Moorbarns Way	<i>Aylestone Recn. Ground</i> <i>Brockington College</i>	2	4	2	2	1
<b>Medbourne FC</b>	Medbourne Sports Club	<i>Mountsaye Academy</i>	2	-	-	-	-
<b>North Kilworth FC</b>	Husband's Bosworth PF South Kilworth PF	Husband's Bosworth PF	2	5	2	2	1



<b>Oadby &amp; Wigston Ladies</b>	D&B Rangers FC	Broughton Astley '3G'	1	-	-	-	-
<b>River Swift FC</b>	Lutterworth Soccer Ctre.	-	1	-	-	-	-
<b>Thompsons United FC</b>	Ullesthorpe Playing Fields Assoc.	Ullesthorpe PF Assoc	-	1	1	5	2
<b>TOTALS</b>	-	-	<b>63</b>	<b>79</b>	<b>42</b>	<b>39</b>	<b>21</b>

**Sub-area analysis:** Teams are distributed by sub-area as follows:

<b>Sub-area</b>	<b>Adult 11v1</b>	<b>Youth 11v1</b>	<b>Youth 9v9</b>	<b>Mini 7v7</b>	<b>Mini 5v5</b>
West	28	30	17	16	9
Middle	24	30	13	17	8
East	11	19	12	6	4
<b>HARBOROUGH</b>	<b>63</b>	<b>79</b>	<b>42</b>	<b>39</b>	<b>21</b>

### 5.3.2 Changes since 2018

Team numbers in 2018, as recorded in the 'Harborough Playing Pitch Strategy' (2018) compare with the current figures as follows:

- District summary:**

<b>Season</b>	<b>Adult 11v1</b>	<b>Youth 11v1</b>	<b>Youth 9v9</b>	<b>Mini 7v7</b>	<b>Mini 5v5</b>
<b>2016/17</b>	39	53	26	30	32
<b>2022/23</b>	63	79	42	39	21
<b>Change</b>	<b>+24</b>	<b>+26</b>	<b>+16</b>	<b>+9</b>	<b>-11</b>

- ***Changes at club level:***

Harborough District Council  
Playing Pitch and Outdoor Sports Facilities Strategy

<i>Club</i>	<i>Year/change</i>	<i>Adult teams</i>	<i>Youth (11v11)</i>	<i>Youth (9v9)</i>	<i>Mini (7v7)</i>	<i>Mini (5v5)</i>	<i>TOTAL</i>
<b>AFC North Kilworth</b>	2016/17	0	0	0	0	0	0
<b>AFC North Kilworth</b>	2022/23	2	2	2	2	1	9
<b>AFC North Kilworth</b>	<b>Change</b>	<b>+2</b>	<b>+2</b>	<b>+2</b>	<b>+2</b>	<b>+1</b>	<b>+9</b>
<b>Aylestone St. James FC</b>	2016/17	0	0	0	0	0	0
<b>Aylestone St. James FC</b>	2021/22	1	0	0	0	0	1
<b>Aylestone St. James FC</b>	<b>Change</b>	<b>+1</b>	<b>0</b>	<b>0</b>	<b>0</b>	<b>0</b>	<b>+1</b>
<b>Borough Alliance JFC</b>	2016/17	2	3	2	2	3	12
<b>Borough Alliance JFC</b>	2022/23	3	6	5	6	3	23
<b>Borough Alliance JFC</b>	<b>Change</b>	<b>+1</b>	<b>+3</b>	<b>+3</b>	<b>+4</b>	<b>0</b>	<b>+11</b>
<b>Brooke House College</b>	2016/17	3	0	0	0	0	3
<b>Brooke House College</b>	2022/23	4	2	0	0	0	6
<b>Brooke House College</b>	<b>Change</b>	<b>+1</b>	<b>+2</b>	<b>0</b>	<b>0</b>	<b>0</b>	<b>+3</b>
<b>Broughton Astley United FC</b>	2016/17	0	1	0	0	0	1
<b>Broughton Astley United FC</b>	2022/23	0	0	0	0	0	0
<b>Broughton Astley United FC</b>	<b>Change</b>	<b>0</b>	<b>-1</b>	<b>0</b>	<b>0</b>	<b>0</b>	<b>-1</b>
<b>Dunton &amp; Broughton Utd</b>	2016/17	3	0	0	0	0	3
<b>Dunton &amp; Broughton Utd</b>	2022/23	6	0	0	0	0	6
<b>Dunton &amp; Broughton Utd</b>	<b>Change</b>	<b>+3</b>	<b>0</b>	<b>0</b>	<b>0</b>	<b>0</b>	<b>+3</b>
<b>Dunton &amp; Broughton Utd Juniors</b>	2016/17	0	5	2	2	3	12
<b>Dunton &amp; Broughton Utd Juniors</b>	2022/23	0	6	5	7	2	20
<b>Dunton &amp; Broughton Utd Juniors</b>	<b>Change</b>	<b>0</b>	<b>+1</b>	<b>+3</b>	<b>+5</b>	<b>-1</b>	<b>+8</b>
<b>Dunton &amp; Broughton United Ladies</b>	2016/17	0	0	0	0	0	0
<b>Dunton &amp; Broughton United Ladies</b>	2022/23	1	0	0	0	0	1
<b>Dunton &amp; Broughton United Ladies</b>	<b>Change</b>	<b>+1</b>	<b>0</b>	<b>0</b>	<b>0</b>	<b>0</b>	<b>+1</b>
<b>FC Cherry Tree</b>	2016/17	1	0	0	0	0	1
<b>FC Cherry Tree</b>	2022/23	1	0	0	0	0	1
<b>FC Cherry Tree</b>	<b>Change</b>	<b>0</b>	<b>0</b>	<b>0</b>	<b>0</b>	<b>0</b>	<b>0</b>
<b>Fleckney Athletic FC</b>	2016/17	1	0	0	0	0	1
<b>Fleckney Athletic FC</b>	2022/23	2	0	0	0	0	2
<b>Fleckney Athletic FC</b>	<b>Change</b>	<b>+1</b>	<b>0</b>	<b>0</b>	<b>0</b>	<b>0</b>	<b>+1</b>
<b>Fleckney Athletic Juniors FC</b>	2016/17	0	8	4	2	3	17

Harborough District Council  
Playing Pitch and Outdoor Sports Facilities Strategy

<b>Fleckney Athletic Juniors</b>	2022/23	0	5	2	2	1	10
<b>Fleckney Athletic Juniors</b>	<b>Change</b>	<b>0</b>	<b>-3</b>	<b>-2</b>	<b>0</b>	<b>-2</b>	<b>-7</b>

Harborough District Council  
 Playing Pitch and Outdoor Sports Facilities Strategy

<i>Club</i>	<i>Year/change</i>	<i>Adult teams</i>	<i>Youth (11v11)</i>	<i>Youth (9v9)</i>	<i>Mini (7v7)</i>	<i>Mini (5v5)</i>	<i>TOTAL</i>
Fleckney Masters FC	2016/17	2	0	0	0	0	2
Fleckney Masters FC	2022/23	1	0	0	0	0	1
Fleckney Masters FC	<b>Change</b>	<b>-1</b>	<b>0</b>	<b>0</b>	<b>0</b>	<b>0</b>	<b>-1</b>
Frolesworth United FC	2016/17	1	0	0	0	0	1
Frolesworth United FC	2022/23	0	0	0	0	0	0
Frolesworth United FC	<b>Change</b>	<b>-1</b>	<b>0</b>	<b>0</b>	<b>0</b>	<b>0</b>	<b>-1</b>
Gilmorton FC	2016/17	0	0	0	0	0	0
Gilmorton FC	2022/23	1	0	0	0	0	1
Gilmorton FC	<b>Change</b>	<b>+1</b>	<b>0</b>	<b>0</b>	<b>0</b>	<b>0</b>	<b>+1</b>
Gilmorton Juniors FC	2016/17	0	1	0	0	0	1
Gilmorton Juniors FC	2022/23	0	0	0	0	0	0
Gilmorton Juniors FC	<b>Change</b>	<b>0</b>	<b>-1</b>	<b>0</b>	<b>0</b>	<b>0</b>	<b>-1</b>
Glen Villa FC	2016/17	2	0	1	2	1	6
Glen Villa FC	2022/23	2	1	2	1	1	7
Glen Villa FC	<b>Change</b>	<b>0</b>	<b>+1</b>	<b>+1</b>	<b>-1</b>	<b>0</b>	<b>+1</b>
Harborough Town FC	2016/17	4	0	0	0	0	4
Harborough Town FC	2022/23	13	0	0	0	0	13
Harborough Town FC	<b>Change</b>	<b>+9</b>	<b>0</b>	<b>0</b>	<b>0</b>	<b>0</b>	<b>+9</b>
Harborough Town Juniors FC	2016/17	0	15	8	8	11	42
Harborough Town Juniors FC	2022/23	0	19	9	5	5	38
Harborough Town Juniors FC	<b>Change</b>	<b>0</b>	<b>+4</b>	<b>+1</b>	<b>-3</b>	<b>-6</b>	<b>-4</b>
Houghton Rangers FC	2016/17	1	3	2	1	1	8
Houghton Rangers FC	2022/23	4	2	1	2	1	10
Houghton Rangers FC	<b>Change</b>	<b>+3</b>	<b>-1</b>	<b>-1</b>	<b>+1</b>	<b>0</b>	<b>+2</b>
Kibworth Town FC	2016/17	3	2	3	3	3	14
Kibworth Town FC	2022/23	7	13	7	4	3	34
Kibworth Town FC	<b>Change</b>	<b>+4</b>	<b>+11</b>	<b>+4</b>	<b>+1</b>	<b>0</b>	<b>+20</b>
Little Bowden FC	2016/17	1	0	0	0	0	1
Little Bowden FC	2022/23	0	0	0	0	0	0
Little Bowden FC	<b>Change</b>	<b>-1</b>	<b>0</b>	<b>0</b>	<b>0</b>	<b>0</b>	<b>-1</b>
Lutterworth Athletic FC	2016/17	4	6	3	4	3	20
Lutterworth Athletic FC	2022/23	7	11	4	1	1	24
Lutterworth Athletic FC	<b>Change</b>	<b>+3</b>	<b>+5</b>	<b>+1</b>	<b>-3</b>	<b>-2</b>	<b>+4</b>
Lutterworth Town FC	2016/17	2	0	0	0	0	2
Lutterworth Town FC	2022/23	2	0	0	0	0	2
Lutterworth Town FC	<b>Change</b>	<b>0</b>	<b>0</b>	<b>0</b>	<b>0</b>	<b>0</b>	<b>0</b>
Lutterworth Town Juniors FC	2016/17	0	2	0	0	0	2
Lutterworth Town Juniors FC	2022/23	0	4	2	2	1	9
Lutterworth Town Juniors FC	<b>Change</b>	<b>0</b>	<b>+2</b>	<b>+2</b>	<b>+2</b>	<b>+1</b>	<b>+7</b>
Medbourne FC	2016/17	2	4	0	1	1	8

Harborough District Council  
 Playing Pitch and Outdoor Sports Facilities Strategy

Medbourne FC	2022/23	2	0	0	0	0	2
Medbourne FC	<b>Change</b>	<b>0</b>	<b>-4</b>	<b>0</b>	<b>-1</b>	<b>-1</b>	<b>-6</b>

<i>Club</i>	<i>Year/change</i>	<i>Adult teams</i>	<i>Youth (11v11)</i>	<i>Youth (9v9)</i>	<i>Mini (7v7)</i>	<i>Mini (5v5)</i>	<i>TOTAL</i>
North Kilworth FC	2016/17	1	3	0	4	3	11
North Kilworth FC	2022/23	2	5	2	2	1	12
North Kilworth FC	<b>Change</b>	<b>+1</b>	<b>+2</b>	<b>+2</b>	<b>-2</b>	<b>-2</b>	<b>+1</b>
Oadby & Wigston Ladies	2016/17	0	0	0	0	0	0
Oadby & Wigston Ladies	2022/23	1	0	0	0	0	1
Oadby & Wigston Ladies	<b>Change</b>	<b>+1</b>	<b>0</b>	<b>0</b>	<b>0</b>	<b>0</b>	<b>+1</b>
Plough Inn FC	2016/17	1	0	0	0	0	1
Plough Inn FC	2022/23	0	0	0	0	0	0
Plough Inn FC	<b>Change</b>	<b>-1</b>	<b>0</b>	<b>0</b>	<b>0</b>	<b>0</b>	<b>-1</b>
River Swift FC	2016/17	1	0	0	0	0	1
River Swift FC	2022/23	1	0	0	0	0	1
River Swift FC	<b>Change</b>	<b>0</b>	<b>0</b>	<b>0</b>	<b>0</b>	<b>0</b>	<b>0</b>
Royalist FC	2016/17	1	0	0	0	0	1
Royalist FC	2022/23	0	0	0	0	0	0
Royalist FC	<b>Change</b>	<b>-1</b>	<b>0</b>	<b>0</b>	<b>0</b>	<b>0</b>	<b>-1</b>
Thompsons United FC	2016/17	0	0	0	0	0	0
Thompsons United FC	2022/23	0	1	1	5	2	9
Thompsons United FC	<b>Change</b>	<b>0</b>	<b>+1</b>	<b>+1</b>	<b>+5</b>	<b>+2</b>	<b>+9</b>
Ullesthorpe FC	2016/17	1	0	0	0	0	1
Ullesthorpe FC	2022/23	0	0	0	0	0	0
Ullesthorpe FC	<b>Change</b>	<b>-1</b>	<b>0</b>	<b>0</b>	<b>0</b>	<b>0</b>	<b>-1</b>

The key expressed demand issues are as follows:

- **Team numbers:** 61 men's teams, two women's teams, 70 youth male (11v11) teams, nine youth female (11v11) teams, 31 youth male (9v9) teams, 11 youth female (9v9) teams, 39 mixed mini-soccer (7v7) teams and 21 mixed mini-soccer (5v5) teams play in Harborough district.
- 15 clubs in Harborough have achieved the FA's quality-assured England Football Accredited status. This is 65.2% which compares with the national average of 27%. In terms of teams, 90.6% (221 out of 244) are part of an England Football Accredited club in Harborough, compared with the national average of 81.1%. This means that the benefits of belonging to an accredited club with formalised safeguarding procedures and qualified coaches is enjoyed by all youth and mini-soccer players in the district.
- **Women and girl's football:** Football for women and girls is relatively well-developed in Harborough, with two adult women's teams, nine youth 11v11 teams and 11 youth 9v9 teams.

### 5.3.3 Expressed demand trends

Overall football participation by adults is falling across the country. The 'Active Lives' survey shows that regular participation has fallen from 5.2% of adults in 2015/16 to 4.1% in 2019/20. However, the number of teams playing in Harborough District has increased from 180 in 2017/17 to 244 in 2022/23, a 35.6% increase.

### 5.3.4 Displaced demand

Displaced demand relates to play by teams or other users of football pitches from within the study area which takes place outside of the area, or vice versa.

- **Imported demand from external clubs:** Two teams from outside the district play 'home' games on pitches in Harborough district.
- **Exported demand from internal clubs:** one team from Harborough district plays on a pitch outside the district.

The net effect of displaced demand for match pitches in Harborough district is one team but exported demand for floodlit training pitches amounts to a further 14 teams.

### 5.3.5 Unmet demand

Unmet demand takes a number of forms:

- Teams may have access to a pitch for matches but nowhere to train or vice versa.
- Pitches of a particular size or type may be unavailable to the community.



- The poor quality and consequent limited capacity of pitches in the area and/or a lack of provision and ancillary facilities which meet a certain standard of play/league requirement.

Responses from the clubs' survey revealed the following unmet demand:

- **Waiting list:** Four clubs have a membership waiting list.
- **Extra pitch needs:** Five clubs have unmet demand for additional match pitches.
- **Extra training needs:** All responding clubs have unmet demand for additional floodlit, all-weather training pitches. The 9v9 '3G' pitch at Kibworth Mead Academy has to support more than 700 players from Kibworth Town FC.

### 5.3.6 Latent demand

Whereas unmet demand is known to exist, latent demand is demand that evidence suggests may be generated from a population if they had access to more or better provision. Consultation with local clubs indicated that a total of 28 additional teams of all age groups could be accommodated in Harborough district if the quality and quantity of pitch provision was improved, an increase of 11.5% from the number of existing teams.

<i>Club</i>	<b>Adult teams</b>	<b>Youth (11v11)</b>	<b>Youth (9v9)</b>	<b>Mini (7v7)</b>	<b>Mini (5v5)</b>
<b>Borough Alliance FC</b>	0	0	0	0	0
<b>Glen Villa FC</b>	1	0	0	0	0
<b>Harborough Town FC</b>	1	2	2	3	3
<b>Houghton Rangers FC</b>	0	0	0	0	0
<b>Kibworth Town FC</b>	2	3	2	3	3
<b>Lutterworth Town FC</b>	1	5	2	2	2
<b>Medbourne FC</b>	0	0	0	0	0
<b>TOTALS</b>	<b>5</b>	<b>10</b>	<b>6</b>	<b>8</b>	<b>8</b>

## 5.4 Football pitch supply in Harborough district

### 5.4.1 Introduction

This section summarises the detail of football pitch supply in Harborough the pitches included in the analysis are defined as natural or artificial turf areas permanently laid out with regulation markings, with the following dimensions as specified in the FA's 'Guide to Pitch Dimensions' (2013):

<b>Pitch Type</b>	<b>Pitch length</b>	<b>Pitch width</b>	<b>Size including run-offs</b>
Adult football	100m	64m	106m x 70m
Youth football 11v11 (U17-U18)	100m	64m	106m x 70m
Youth football 11v11 (U15-U16)	91m	55m	97m x 61m
Youth football 11v11 (U13-U14)	82m	50m	88m x 56m
Youth football 9v9 (U11-U12)	73m	46m	79m x 52m
Mini-soccer 7v7 (U9-U10)	55m	37m	61m x 43m
Mini-soccer 5v5 (U7-U8)	37m	27m	43m x 33m
'3G' Football Turf Pitch	100m	64m	106m x 70m

The categories assessed are as follows:

- Pitches available for community use and used.
- Pitches available for community use but not used.
- Pitches not available for community use.

#### 5.4.2 Full-sized '3G' football turf pitches

There are three full-sized pitches in the district. All are on the FA's '3G' Pitch Register and are therefore certified for competitive play:

<b>Site</b>	<b>Address</b>	<b>Dimensions</b>	<b>Floodlit</b>	<b>Built</b>	<b>Sub Area</b>
Bowden's Park 1	Northampton Road, Market Harborough LE16 9HF	107m x 71m	Yes	2008	Middle
Bowden's Park 2	Northampton Road, Market Harborough LE16 9HF	106m x 70m	Yes	2018	Middle
Broughton Astley Leisure Centre	Broughton Way, Broughton Astley LE9 6AZ	105m x 70m	Yes	2019	West
Lutterworth Athletic FC	Hall Lane, Lutterworth LE17 4LN	106m x 70m	Yes	2022*	West

\* Due to commence construction

#### 5.4.3 Small-sided '3G' football turf pitches

The following small-sided pitches are available for community use. The Kibworth Mead Academy pitch is on the FA's '3G' Pitch Register, however the other pitches are not so can only be used for training:

<b>Site</b>	<b>Address</b>	<b>Dimensions</b>	<b>Floodlit</b>	<b>Built</b>	<b>Sub-area</b>
Dunton & Broughton Rangers FC	Station Road, Dunton Bassett LE17 5LG	25m x 16m	No	2015	West
Fleckney Sports and Leisure Centre	Leicester Road, Fleckney LE8 8BG	47m x 34m	Yes	2017	Middle

Kibworth Mead Academy	Smeeton Road, Kibworth Beauchamp LE8 0LG	73m x 46m	Yes	2015	East
Lutterworth Athletic FC	Hall Lane, Lutterworth LE17 4LN	Four 30m x 20m	Yes	2010	West

#### 5.4.4 Grass football pitches

Provision of grass pitches with regulation line markings and goalposts for organised football are as follows. Pitches overmarked on other pitches are shown in brackets:

- Available for community use and used:**

Site	Address	Adult 11v11	Youth 11v11	Youth 9v9	Mini 7v7	Mini 5v5	Sub-area
Aylestone St. James Rugby Club	Covert Lane, Aylestone LE7 9SP	1	-	-	-	-	East
Bird's Barn	Fleckney Road, Kibworth LE8 0HJ	2	-	2	2	2	East
Bowden's Park	Northampton Road, Market Harborough LE16 9HF	3	2	3	2	-	Middle
Dunley Way Playing Field	Dunley Way, Lutterworth LE17 4NP	1	-	-	-	-	West
Dunton & Broughton Rangers FC	Station Road, Dunton Bassett LE17 5LG	1	-	-	-	-	West
Fleckney Sports and Leisure Centre	Leicester Road, Fleckney LE8 8BG	1	2	-	2	4	Middle
Frolesworth Road Recreation Ground	Frolesworth Road, Broughton Astley LE9 6PG	2	-	-	-	-	West
Gilmorton Playing Field	Woodcock Close, Gilmorton LE17 5SE	1	-	-	1	2	West
Great Glen Recreation Ground	Bridgewater Drive, Great Glen LE8 9FA	1	-	-	3	-	East
Houghton Field	Firs Road, Houghton-on-the-Hill LE7 9GU	2	(1)	-	1	(1)	East
Husband's Bosworth Playing Field	Kilworth Road, Husband's Bosworth LE17 6JW	1	-	-	1	-	West
John Wycliffe Primary School	Moorbarns Lane, Lutterworth LE17 4QJ	-	-	-	1	-	West

Site	Address	Adult 11v11	Youth 11v11	Youth 9v9	Mini 7v7	Mini 5v5	Sub-area
Lodge Road Recreation Ground	Lodge Road, Fleckney LE8 8BX	-	-	1	-	-	Middle
Lutterworth Football Academy	Hall Lane, Lutterworth LE17 4LN	2	1	1	1	2	West
Lutterworth High School	Woodway Road, Lutterworth LE17 4QH	-	2	2	1	1	West
Medbourne Sports and Social Club	Hallaton Road, Medbourne LE16 8DR	1	-	1	1	-	East
North Kilworth Football Club	South Kilworth Road, North Kilworth LE17 6HF	2	-	1	1	1	West
Robert Smyth Academy	Burnmill Road, Market Harborough LE16 7JG	1	1	-	-	-	Middle
South Kilworth Recreation Ground	North Road, South Kilworth LE17 6DZ	1	1	-	-	-	West
Symington's Recreation Ground	St. Mary's Road, Market Harborough LE16 7DS	2	-	1	1	1	Middle
Thomas Estley Community College	Station Road, Broughton Astley LE9 6PT	1	2	-	-	-	West
Ullesthorpe Playing Fields Association	Ashby Road, Ullesthorpe LE17 5DN	-	-	1	1	2	West
<b>TOTALS</b>	<b>-</b>	<b>26</b>	<b>11(1)</b>	<b>13</b>	<b>19</b>	<b>15(1)</b>	<b>-</b>

- Available for community use and not used:**

Site	Address	Adult 11v11	Youth 11v11	Youth 9v9	Mini 7v7	Mini 5v5	Sub-area
		1	1				
Swinford Playing Field	Lutterworth Road, Swinford LE17 6BA	1	-	-	-	-	West
Warwick Road Recreation Ground	Dairy Way, Kibworth Harcourt LE8 0NH	1*	-	-	-	-	East
<b>TOTALS</b>	<b>-</b>	<b>3</b>	<b>0</b>	<b>0</b>	<b>0</b>	<b>0</b>	<b>-</b>

\* 'Poor' quality sloping pitch.

- Pitches not available for community use:** The following grass pitches on school sites are not available for community use:

Site	Address	Adult 11v11	Youth 11v11	Youth 9v9	Mini 7v7	Mini 5v5	Sub-area
		1					
Billesdon Primary School	Gaulby Road. Billesdon LE7 9AG	-	-	-	1	-	East

Church Langton Primary Academy	Stonton Road, Church Langton LE16 7SZ	-	-	-	1	-	East
Farndon Fields Primary School	Argyle Park, Market Harborough LE16 9JH	-	-	1	1	1	Middle
Fernvale Primary School	Somerby Road, Scraptoft LE7 9PR	-	2	-	-	-	East
Fleckney Primary School	Batchelor Road, Fleckney LE8 8BE	-	1	-	1	-	Middle
Foxton Primary School	Gallow Field Road, Foxton LE16 7QZ	-	-	-	1	-	Middle
Great Glen St. Cuthbert's Primary	The Chase, Great Glen LE8 9EQ	-	-	-	1	-	East
Husband's Bosworth Primary School	School Lane, Husband's Bosworth LE17 6JU	-	-	-	1	-	West
Kibworth Mead Academy	Smeeton Road, Kibworth Beauchamp LE8 0LG	-	2	-	-	-	East
Kibworth Primary School	Hillcrest Avenue, Kibworth Harcourt LE8 0NH	-	-	-	2	-	East
Lubenham All Saints Primary School	School Lane, Lubenham LE16 9TW	-	-	-	1	-	Middle
Lutterworth College	Bittesworth Road, Lutterworth LE17 4EX	2	1	-	1	-	West
Market Harborough Academy	Fairfield Road, Market Harborough LE16 9QH	-	-	-	1	-	Middle
Ridgeway Primary Academy	The Ridgeway, Market Harborough LE16 7HQ	-	-	-	1	-	Middle
Sherrier Primary School	Bitteswell Road, Lutterworth LE17 4EX	-	-	-	2	-	West
St. Andrew's Primary School	Dag Lane, North Kilworth LE17 6HD	-	-	-	1	-	West
St. Luke's Primary School	Main Street, Thurnby LE7 9PN	-	-	-	2	-	East
Welland Park Academy	Welland Park Road, Market Harborough LE16 9DR	-	-	1	-	-	Middle
<b>TOTALS</b>	-	<b>2</b>	<b>4</b>	<b>2</b>	<b>18</b>	<b>1</b>	<b>-</b>

#### 5.4.6 Provision by sub-area

Pitches with community use and used by sub-area are as follows. Over-marked pitches are shown in brackets:

<i>Sub-area</i>	<i>Adult 11v11</i>	<i>Youth 11v11</i>	<i>Youth 9v9</i>	<i>Mini 7v7</i>	<i>Mini 5v5</i>
West	12	4	5	7	9
Middle	8	6	7	7	6
East	6	2	1	5	4
<b>HARBOROUGH</b>	<b>26</b>	<b>12</b>	<b>13</b>	<b>19</b>	<b>16</b>

#### 5.4.7 Artificial turf pitch quality

The quality of the '3G' football turf pitches in the district was assessed from site visits, to apply the Non-technical Visual Assessment criteria developed for use in conjunction with the '*Playing Pitch Strategy Guidance*'. The assessment generates an overall 'score' by evaluating the playing surface, fencing, floodlighting, disability access and changing provision.

- **Full-sized '3G' football turf pitches:**

<i>Site</i>	<i>Pitch</i>	<i>Changing</i>
Bowden's Park (pitch one)	Good	Good
Bowden's Park (pitch two)	Good	Good
Broughton Astley Leisure Centre	Good	Good

- **Small-sided '3G' football turf pitches:**

<i>Site</i>	<i>Pitch</i>	<i>Changing</i>
Dunton & Broughton Rangers FC	Good	Good
Fleckney Sports and Leisure Centre	Good	Good
Kibworth Mead Academy	Good	Good
Lutterworth Athletic FC	Good	Good

#### 5.4.8 Grass pitch quality

The quality of all grass football pitches in Harborough with community use and used was assessed from site visits during the playing season, to apply the Non-technical Visual Assessment criteria developed by the FA for use in conjunction with the '*Playing Pitch Strategy Guidance*'. These were cross-referenced with the Football Foundation's 'Pitch Power' reports where available. The criteria assessed are as follows. A percentage score and associated ratings are generated as an overall measure of quality:

- **The playing surface:** This includes grass cover, pitch dimensions, gradient, evenness, length of grass, drainage and evidence of any unauthorised use.
- **The changing facilities:** This includes the availability of changing rooms, kitchen and/or bar, the interior and exterior appearance, showering and toilet provision, medical room, disability access and parking arrangements.

- **Grounds maintenance:** This includes the frequency of grass cutting, seeding, aeration, sand-dressing, fertilising, weed killing and chain harrowing.

The ratings for each grass football pitch in Harborough are below. The percentage scores generated equate to ratings of 'Good' for scores of 100% - 75% (highlighted in green below), 'Standard' for scores of 74.9% - 50% (highlighted in yellow below), 'Poor' for scores of 49.9% - 25% (highlighted in red below) and 'Unsuitable' below 25%:

- 

<b>Site</b>	<b>Pitches</b>	<b>Pitch</b>	<b>Changing</b>	<b>Comments</b>
<b>Aylestone St. James Rugby Club</b>	Adult pitch	Good	Good	Pitch is sloping but 'good' quality with floodlights. Changing currently being upgraded to 'good' standard.
<b>Bird's Barn</b>	Adult pitch 1	Good	Poor	Pitches are 'good' quality. Changing facilities are basic and 'poor' quality. Parking facilities are limited.
<b>Bird's Barn</b>	Adult pitch 2	Good	Poor	Pitches are 'good' quality. Changing facilities are basic and 'poor' quality. Parking facilities are limited.
<b>Bird's Barn</b>	Youth 9v9 pitch 1	Good	Poor	Pitches are 'good' quality. Changing facilities are basic and 'poor' quality. Parking facilities are limited.
<b>Bird's Barn</b>	Youth 9v9 pitch 2	Good	Poor	Pitches are 'good' quality. Changing facilities are basic and 'poor' quality. Parking facilities are limited.
<b>Bird's Barn</b>	Mini 7v7 pitch 1	Good	Poor	Pitches are 'good' quality. Changing facilities are basic and 'poor' quality. Parking facilities are limited.
<b>Bird's Barn</b>	Mini 7v7 pitch 2	Good	Poor	Pitches are 'good' quality. Changing facilities are basic and 'poor' quality. Parking facilities are limited.
<b>Bird's Barn</b>	Mini 5v5 pitch 1	Good	Poor	Pitches are 'good' quality. Changing facilities are basic and 'poor' quality. Parking facilities are limited.
<b>Bird's Barn</b>	Mini 5v5 pitch 2	Good	Poor	Pitches are 'good' quality. Changing facilities are basic and 'poor' quality. Parking facilities are limited.
<b>Bowden's Park</b>	Adult pitch 1	Standard	Good	'Standard' quality pitches with 'good' quality changing. Car parking is inadequate at peak periods.
<b>Bowden's Park</b>	Adult pitch 2	Standard	Good	'Standard' quality pitches with 'good' quality changing. Car parking is inadequate at peak periods.



Harborough District Council  
Playing Pitch and Outdoor Sports Facilities Strategy

<b>Bowden's Park</b>	Adult pitch 3	Standard	Good	'Standard' quality pitches with 'good' quality changing. Car parking is inadequate at peak periods.
<b>Bowden's Park</b>	Youth 11v11 pitch 1	Standard	Good	'Standard' quality pitches with 'good' quality changing. Car parking is inadequate at peak periods.
<b>Bowden's Park</b>	Youth 11v11 pitch 2 Youth 9v9 pitch 1	Standard	Good	'Standard' quality pitches with 'good' quality changing. Car parking is inadequate at peak periods.
<b>Bowden's Park</b>	Youth 9v9 pitch 2	Standard	Good	'Standard' quality pitches with 'good' quality changing. Car parking is inadequate at peak periods.
<b>Bowden's Park</b>	Youth 9v9 pitch 3	Standard	Good	'Standard' quality pitches with 'good' quality changing. Car parking is inadequate at peak periods.
<b>Bowden's Park</b>	Mini 7v7 pitch 1	Standard	Good	'Standard' quality pitches with 'good' quality changing. Car parking is inadequate at peak periods.
<b>Bowden's Park</b>	Mini 7v7 pitch 2	Standard	Good	'Standard' quality pitches with 'good' quality changing. Car parking is inadequate at peak periods.
<b>Dunley Way Playing Field</b>	Adult pitch	Good	Good	'Good' quality pitch and changing.
<b>Dunton and Broughton Rangers FC</b>	Adult pitch	Good	Good	'Good' quality pitch and changing.
<b>Fleckney Sports and Leisure Centre</b>	Adult pitch	Good	Standard	Pitches are at the lower end of 'good' quality. Changing facilities attached to the Sports Centre are 'standard'. Car parking capacity is limited.
<b>Fleckney Sports and Leisure Centre</b>	Youth 11v11 pitch 1	Good	Standard	Pitches are at the lower end of 'good' quality. Changing facilities attached to the Sports Centre are 'standard'. Car parking capacity is limited
<b>Fleckney Sports and Leisure Centre</b>	Youth 11v11 pitch 2	Good	Standard	Pitches are at the lower end of 'good' quality. Changing facilities attached to the Sports Centre are 'standard'. Car parking capacity is limited
<b>Fleckney Sports and Leisure Centre</b>	Mini 7v7 pitch 1	Good	Standard	Pitches are at the lower end of 'good' quality. Changing facilities attached to the Sports Centre are 'standard'. Car parking capacity is limited
<b>Fleckney Sports and Leisure Centre</b>	Mini 7v7 pitch 2	Good	Standard	Pitches are at the lower end of 'good' quality. Changing facilities attached to the Sports Centre are

Harborough District Council  
Playing Pitch and Outdoor Sports Facilities Strategy

				'standard'. Car parking capacity is limited
<b>Fleckney Sports and Leisure Centre</b>	Mini 5v5 pitch 1	Good	Standard	Pitches are at the lower end of 'good' quality. Changing facilities attached to the Sports Centre are 'standard'. Car parking capacity is limited
<b>Fleckney Sports and Leisure Centre</b>	Mini 5v5 pitch 2	Good	Standard	Pitches are at the lower end of 'good' quality. Changing facilities attached to the Sports Centre are 'standard'. Car parking capacity is limited
<b>Fleckney Sports and Leisure Centre</b>	Mini 5v5 pitch 3	Good	Standard	Pitches are at the lower end of 'good' quality. Changing facilities attached to the Sports Centre are 'standard'. Car parking capacity is limited
<b>Fleckney Sports and Leisure Centre</b>	Mini 5v5 pitch 4	Good	Standard	Pitches are at the lower end of 'good' quality. Changing facilities attached to the Sports Centre are 'standard'. Car parking capacity is limited
<b>Frolesworth Road Recreation Ground</b>	Adult pitch 1	Poor	Poor	'Poor' quality pitches and changing facilities.
<b>Frolesworth Road Recreation Ground</b>	Adult pitch 2	Poor	Poor	'Poor' quality pitches and changing facilities.
<b>Gilmorton Playing Field</b>	Adult pitch	Good	Good	'Good' quality adult pitch with 'standard' quality mini pitches. 'Good' quality changing shared with cricket.
<b>Gilmorton Playing Field</b>	Mini 7v7 Pitch 1	standard	Good	'Good' quality adult pitch with 'standard' quality mini pitches. 'Good' quality changing shared with cricket.
<b>Gilmorton Playing Field</b>	Mini 5v5 Pitch 1	standard	Good	'Good' quality adult pitch with 'standard' quality mini pitches. 'Good' quality changing shared with cricket.
<b>Gilmorton Playing Field</b>	Mini 5v5 Pitch 2	standard	Good	'Good' quality adult pitch with 'standard' quality mini pitches. 'Good' quality changing shared with cricket.
<b>Great Glen Recreation Ground</b>	Adult pitch	Standard	Standard	Adult pitch is 'standard' quality, but mini pitches are 'poor' quality with pronounced slopes. Changing facilities are 'standard' quality.
<b>Great Glen Recreation Ground</b>	Mini 7v7 pitch 1	Poor	Standard	Adult pitch is 'standard' quality, but mini pitches are 'poor' quality with pronounced slopes. Changing facilities are 'standard' quality.

Harborough District Council  
Playing Pitch and Outdoor Sports Facilities Strategy

<b>Great Glen Recreation Ground</b>	Mini 7v7 pitch 2	Poor	Standard	Adult pitch is 'standard' quality, but mini pitches are 'poor' quality with pronounced slopes. Changing facilities are 'standard' quality.
<b>Great Glen Recreation Ground</b>	Mini 7v7 pitch 3	Poor	Standard	Adult pitch is 'standard' quality, but mini pitches are 'poor' quality with pronounced slopes. Changing facilities are 'standard' quality.

Harborough District Council  
 Playing Pitch and Outdoor Sports Facilities Strategy

<b>Site</b>	<b>Pitches</b>	<b>Pitch</b>	<b>Changing</b>	<b>Comments</b>
<b>Houghton Field</b>	Adult pitch 1	Good	Poor	'Good' quality pitches. Youth 11v11 and mini 5v5 pitches are overmarked. Changing facilities are 'poor' quality.
<b>Houghton Field</b>	Adult pitch 2	Good	Poor	'Good' quality pitches. Youth 11v11 and mini 5v5 pitches are overmarked. Changing facilities are 'poor' quality.
<b>Houghton Field</b>	(Youth 11v11 pitch)	Good	Poor	'Good' quality pitches. Youth 11v11 and mini 5v5 pitches are overmarked. Changing facilities are 'poor' quality.
<b>Houghton Field</b>	Mini 7v7 pitch	Good	Poor	'Good' quality pitches. Youth 11v11 and mini 5v5 pitches are overmarked. Changing facilities are 'poor' quality.
<b>Houghton Field</b>	(Mini 5v5 pitch)	Good	Poor	'Good' quality pitches. Youth 11v11 and mini 5v5 pitches are overmarked. Changing facilities are 'poor' quality.
<b>Husband's Bosworth Playing Field</b>	Adult pitch	Good	Good	Pitches towards the lower end of 'good' quality. 'Good' quality changing.
<b>Husband's Bosworth Playing Field</b>	Mini 7v7 pitch	Good	Good	Pitches towards the lower end of 'good' quality. 'Good' quality changing.
<b>John Wycliffe Primary School</b>	Mini 7v7 pitch	Standard	None	'Standard' quality pitch. Changing not available to community users.
<b>Lodge Road Recreation Ground</b>	Youth 9v9 pitch	Standard	Poor	'Standard' quality pitch with 'poor' quality shipping container changing.
<b>Lutterworth Football Academy</b>	Adult pitch 1	Standard	Good	'Standard' quality pitches, with 'good' quality mini 5v5 pitches and 'good' quality changing. Home of Lutterworth Athletic FC. Their stadium pitch will be converted to '3G'.
<b>Lutterworth Football Academy</b>	Adult pitch 2	Standard	Good	'Standard' quality pitches, with 'good' quality mini 5v5 pitches and 'good' quality changing. Home of Lutterworth Athletic FC. Their stadium pitch will be converted to '3G'.
<b>Lutterworth Football Academy</b>	Youth 11v11 pitch	Standard	Good	'Standard' quality pitches, with 'good' quality mini 5v5 pitches and 'good' quality changing. Home of Lutterworth Athletic FC. Their stadium pitch will be converted to '3G'.

<b>Lutterworth Football Academy</b>	Youth 9v9 pitch	Standard	Good	'Standard' quality pitches, with 'good' quality mini 5v5 pitches and 'good' quality changing. Home of Lutterworth Athletic FC. Their stadium pitch will be converted to '3G'.
<b>Lutterworth Football Academy</b>	Mini 7v7 pitch	Standard	Good	'Standard' quality pitches, with 'good' quality mini 5v5 pitches and 'good' quality changing. Home of Lutterworth Athletic FC. Their stadium pitch will be converted to '3G'.
<b>Lutterworth Football Academy</b>	Mini 5v5 pitch 1	Good	Good	'Standard' quality pitches, with 'good' quality mini 5v5 pitches and 'good' quality changing. Home of Lutterworth Athletic FC. Their stadium pitch will be converted to '3G'.
<b>Lutterworth Football Academy</b>	Mini 5v5 pitch 2	Good	Good	'Standard' quality pitches, with 'good' quality mini 5v5 pitches and 'good' quality changing. Home of Lutterworth Athletic FC. Their stadium pitch will be converted to '3G'.
<b>Lutterworth High School</b>	Youth 11v11 pitch 1	Standard	None	Marked and maintained by Lutterworth Town FC. Pitches at the lower end of 'standard' quality due to poor drainage. Changing facilities not available to community users.
<b>Lutterworth High School</b>	Youth 11v11 pitch 2	Standard	None	Marked and maintained by Lutterworth Town FC. Pitches at the lower end of 'standard' quality due to poor drainage. Changing facilities not available to community users.
<b>Lutterworth High School</b>	Youth 9v9 pitch 1	Standard	None	Marked and maintained by Lutterworth Town FC. Pitches at the lower end of 'standard' quality due to poor drainage. Changing facilities not available to community users.
<b>Lutterworth High School</b>	Youth 9v9 pitch 2	Standard	None	Marked and maintained by Lutterworth Town FC. Pitches at the lower end of 'standard' quality due to poor drainage. Changing facilities not available to community users.
<b>Lutterworth High School</b>	Mini 7v7 pitch 2	Standard	None	Marked and maintained by Lutterworth Town FC. Pitches at

				the lower end of 'standard' quality due to poor drainage. Changing facilities not available to community users.
<b>Lutterworth High School</b>	Mini 5v5 pitch	Standard	None	Marked and maintained by Lutterworth Town FC. Pitches at the lower end of 'standard' quality due to poor drainage. Changing facilities not available to community users.
<b>Medbourne Sports and Social Club</b>	Adult pitch	Standard	Good	Pitches towards the higher end of 'standard' quality (slightly sloping). 'Good' quality changing.
<b>Medbourne Sports and Social Club</b>	Youth 9v9 pitch	Standard	Good	Pitches towards the higher end of 'standard' quality (slightly sloping). 'Good' quality changing
<b>Medbourne Sports and Social Club</b>	Mini 7v7 pitch	Standard	Good	Pitches towards the higher end of 'standard' quality (slightly sloping). 'Good' quality changing
<b>North Kilworth Football Club</b>	Adult pitch 1	Standard	Standard	'Standard' quality adult pitches, but 'poor' quality mini pitches with gradients. 'Standard' quality changing.
<b>North Kilworth Football Club</b>	Adult pitch 2	Standard	Standard	'Standard' quality adult pitches, but 'poor' quality mini pitches with gradients. 'Standard' quality changing.
<b>North Kilworth Football Club</b>	Mini 7v7 pitch 1	Poor	Standard	'Standard' quality adult pitches, but 'poor' quality mini pitches with gradients. 'Standard' quality changing.
<b>North Kilworth Football Club</b>	Mini 7v7 pitch 2	Poor	Standard	'Standard' quality adult pitches, but 'poor' quality mini pitches with gradients. 'Standard' quality changing.
<b>North Kilworth Football Club</b>	Mini 5v5 pitch	Poor	Standard	'Standard' quality adult pitches, but 'poor' quality mini pitches with gradients. 'Standard' quality changing.
<b>Robert Smyth Academy</b>	Adult pitch	Standard	Standard	'Standard' quality pitches, with 'standard' changing.
<b>Robert Smyth Academy</b>	Youth 11v11 pitch	Standard	Standard	'Standard' quality pitches, with 'standard' changing.
<b>South Kilworth Recreation Ground</b>	Adult pitch	Standard	Standard	'Standard' quality pitches, with 'standard' changing.
<b>South Kilworth Recreation Ground</b>	Youth 11v11 pitch	Standard	Standard	'Standard' quality pitches, with 'standard' changing.

<b>Symington's Recreation Ground</b>	Adult pitch 1	Standard	Poor	Pitches towards the higher end of 'standard' quality. Changing is 'poor' quality.
<b>South Kilworth Recreation Ground</b>	Adult pitch 2	Standard	Poor	Pitches towards the higher end of 'standard' quality. Changing is 'poor' quality.
<b>South Kilworth Recreation Ground</b>	Youth 9v9 pitch	Standard	Poor	Pitches towards the higher end of 'standard' quality. Changing is 'poor' quality.
<b>South Kilworth Recreation Ground</b>	Mini 7v7 pitch	Standard	Poor	Pitches towards the higher end of 'standard' quality. Changing is 'poor' quality.
<b>South Kilworth Recreation Ground</b>	Mini 5v5 pitch	Standard	Poor	Pitches towards the higher end of 'standard' quality. Changing is 'poor' quality.
<b>Thomas Estley Community College</b>	Adult pitch	Standard	Standard	'Standard' quality pitches, with 'standard' changing.
<b>Thomas Estley Community College</b>	Youth 11v11 pitch 1	Standard	Standard	'Standard' quality pitches, with 'standard' changing.
<b>Thomas Estley Community College</b>	Youth 11v11 pitch 2	Standard	Standard	'Standard' quality pitches, with 'standard' changing.
<b>Ullesthorpe Playing Field</b>	Youth 9v9 pitch	Standard	Standard	'Standard' quality pitches and changing.
<b>Ullesthorpe Playing Field</b>	Mini 7v7 pitch	Standard	Standard	'Standard' quality pitches and changing.
<b>Ullesthorpe Playing Field</b>	Mini 5v5 pitch 1	Standard	Standard	'Standard' quality pitches and changing.
<b>Ullesthorpe Playing Field</b>	Mini 5v5 pitch 2	Standard	Standard	'Standard' quality pitches and changing.

#### 5.4.9 Summary of grass pitch quality

The number and percentage of pitches in each quality band is tabulated below. 10.0% of pitches in the district are rated as 'poor' quality, with consequent reductions in carrying capacity.

<b>Pitch type</b>	<b>Number Good</b>	<b>Good %</b>	<b>Number Standard</b>	<b>Standard %</b>	<b>Number Poor</b>	<b>Poor %</b>
<b>Adult 11v11</b>	9	34.6%	16	61.5%	1	3.8%
<b>Youth 11v11</b>	3	25.0%	9	75.0%	0	0.0%
<b>Youth 9v9</b>	2	16.7%	11	83.3%	0	0.0%
<b>Mini-soccer 7v7</b>	5	26.3%	9	47.4%	5	26.3%
<b>Mini-soccer 5v5</b>	9	56.3%	6	37.5%	1	6.2%
<b>TOTAL</b>	<b>28</b>	<b>32.6%</b>	<b>51</b>	<b>59.3%</b>	<b>7</b>	<b>8.1%</b>



#### 5.4.10 Summary of changing facilities quality

The number and percentage of pitches of each type that are served by 'poor' quality or no changing facilities is tabulated below. 34.8% of pitches are served by 'poor' quality or no changing facilities and the adverse impact on such a high proportion of pitch users makes it more difficult to recruit and retain new players, particularly women and girls.

<b>Pitch type</b>	<b>Number</b>	<b>%</b>
<b>Adult 11v11</b>	8	32.0%
<b>Youth 11v11</b>	3	25.0%
<b>Youth 9v9</b>	5	41.7%
<b>Mini-soccer 7v7</b>	7	36.8%
<b>Mini-soccer 5v5</b>	5	31.3%
<b>TOTAL</b>	<b>28</b>	<b>32.6%</b>

#### 5.4.11 Grass pitch maintenance

Football pitch maintenance in the district is organised as follows:

- **Club-managed pitches:** Dunton and Broughton United FC, Harborough Town FC, Kibworth Town FC, Lutterworth Athletic FC and Lutterworth Town FC all maintain the pitches they use. This involves a combination of external contractors and volunteer help.
- **Council-owned pitches:** The council has an in-house grounds maintenance team to undertake football pitch maintenance.
- **Pitches on education sites:** The school sites with community use all employ or contract their pitch maintenance staff.

#### 5.4.12 Pitch hire charges

The cost of hiring grass football pitches in Harborough district and areas are as follows.

Harborough District Council  
 Playing Pitch and Outdoor Sports Facilities Strategy

<b>Council</b>	<b>Pitch</b>	<b>Cost per match (£)</b>
<i>Harborough District</i>	11v11 pitch	£60
<i>Harborough District</i>	9v9 pitch	£35
<i>Harborough District</i>	7v7 pitch	£25
<i>Harborough District</i>	5v5 pitch	£15
<i>Blaby District Council</i>	Adult pitch	£40
<i>Blaby District Council</i>	Youth pitch	£12.50
<i>Blaby District Council</i>	Mini-Soccer pitch	£7.50
<i>Rugby Borough Council</i>	Adult pitch	£41
<i>Rugby Borough Council</i>	Youth pitch	£32
<i>Rugby Borough Council</i>	Mini-Soccer pitch	£16
<i>Charnwood District Council</i>	Adult	£60
<i>Charnwood District Council</i>	Junior	£30
<i>Corby Borough Council</i>	Adult pitch	£23
<i>Corby Borough Council</i>	Youth pitch	£15

The cost of hiring artificial grass football pitches in the peak period in Harborough district and comparisons with other areas are as follows:

<b>Council</b>	<b>location</b>	<b>Pitch</b>	<b>Cost per match (£)</b>
<i>Harborough District</i>	<i>Harborough Town '3G' pitches</i>	Whole pitch (with lights)	£110
<i>Harborough District</i>	<i>Harborough Town '3G' pitches</i>	Whole pitch (without lights)	£90
<i>Harborough District</i>	<i>Harborough Town '3G' pitches</i>	One-third pitch	£30
<i>Harborough District</i>	<i>Broughton Astley Leisure Centre</i>	Whole pitch	£83.50
<i>Harborough District</i>	<i>Broughton Astley Leisure Centre</i>	Half-pitch	£52
<i>Harborough District</i>	<i>Broughton Astley Leisure Centre</i>	One-third pitch	£26
<i>Leicester Council</i>	<i>City Judgemeanow College</i>	Whole pitch	£90
<i>Leicester Council</i>	<i>City Judgemeanow College</i>	One-third pitch	£42
<i>Melton Borough Council</i>	<i>John Fernley College</i>	Whole pitch	£90
<i>Melton Borough Council</i>	<i>John Fernley College</i>	Half pitch	£50

The comparison of prices shows that the cost of hiring grass pitches and '3G' football turf pitches in Harborough are generally comparable to those in neighbouring areas.

#### 5.4.13 Ownership, management and security of access

The ownership, management and security of community access of football pitch sites is detailed below. Security of access refers to the extent to which community use is protected (through public ownership, community use agreements etc.), rather than the security of tenure of specific users.

<b>Site</b>	<b>Ownership</b>	<b>Management</b>	<b>Access</b>
Aylestone St. James RFC	Aylestone St. James RFC	Aylestone St. James RFC	Secured
Bird's Barn	Private landowner	Kibworth Town FC	Secured
Bowden's Park	Harborough District Council	Harborough Town Community Trust	Secured
Dunley Way Playing Field	Harborough District Council	Harborough District Council	Secured
Dunton and Broughton Rangers FC	Dunton and Broughton Rangers FC	Dunton and Broughton Rangers FC	Secured
Fleckney Sports and Leisure Centre	Fleckney Parish Council	Fleckney Sports and Leisure Centre	Secured
Frolesworth Road Recreation Ground	Broughton Astley Parish Council	Broughton Astley Parish Council	Secured
Gilmorton Playing Field	Gilmorton Parish Council	Gilmorton Parish Council	Secured
Great Glen Recn. Ground	Great Glen Parish Council	Great Glen Parish Council	Secured
Houghton Field	Houghton-on-the-Hill Parish Council	Houghton-on-the-Hill Parish Council	Secured
Husband's Bosworth Playing Field	Husband's Bosworth Parish Council	Husband's Bosworth Parish Council	Secured
John Wycliffe Primary School	Inspiring Primaries Academy Trust	John Wycliffe Primary School	Secured
Lodge Road Recn. Ground	Fleckney Parish Council	Fleckney Parish Council	Secured
Lutterworth Football Academy	Lutterworth Athletic FC	Lutterworth Athletic FC	Secured
Lutterworth High School (Woodway Road)	Lutterworth High School	Lutterworth High School	Unsecured
Medbourne Sports and Social Club	Medbourne Sports and Social Club	Medbourne Sports and Social Club	Secured
North Kilworth Football Club	North Kilworth Football Club	North Kilworth Football Club	Secured
Robert Smyth Academy	Robert Smyth Academy	Robert Smyth Academy	Unsecured
South Kilworth Recreation Ground	South Kilworth Parish Council	South Kilworth Parish Council	Secured
Symington's Recreation Ground	Harborough District Council	Harborough District Council	Secured
Thomas Estley Community College	Success Academy Trust	Thomas Estley Community College	Unsecured
Ullesthorpe Playing Fields Association	Ullesthorpe Playing Fields Association	Ullesthorpe Playing Fields Association	Secured

The number and proportion of football pitches in Harborough with community use and used that have secured access is as follows. 16.3% of the pitches with community use and used are on sites without secured use, meaning that in theory community use

could be rescinded at any time. Measures to secure community use at education sites, such as formal Community Use Agreements, would therefore be advisable.

<b>Pitch Type</b>	<b>Secured Number</b>	<b>%</b>	<b>Unsecured Number</b>	<b>%</b>
Adult football	24	92.3%	2	7.7%
Youth football (11v11)	6	50.0%	6	50.0%
Youth football (9v9)	10	90.9%	3	9.1%
Mini-soccer (7v7)	17	89.5%	2	10.5%
Mini-soccer (5v5)	15	93.8%	1	6.2%
<b>TOTALS</b>	<b>72</b>	<b>83.7%</b>	<b>14</b>	<b>16.3%</b>

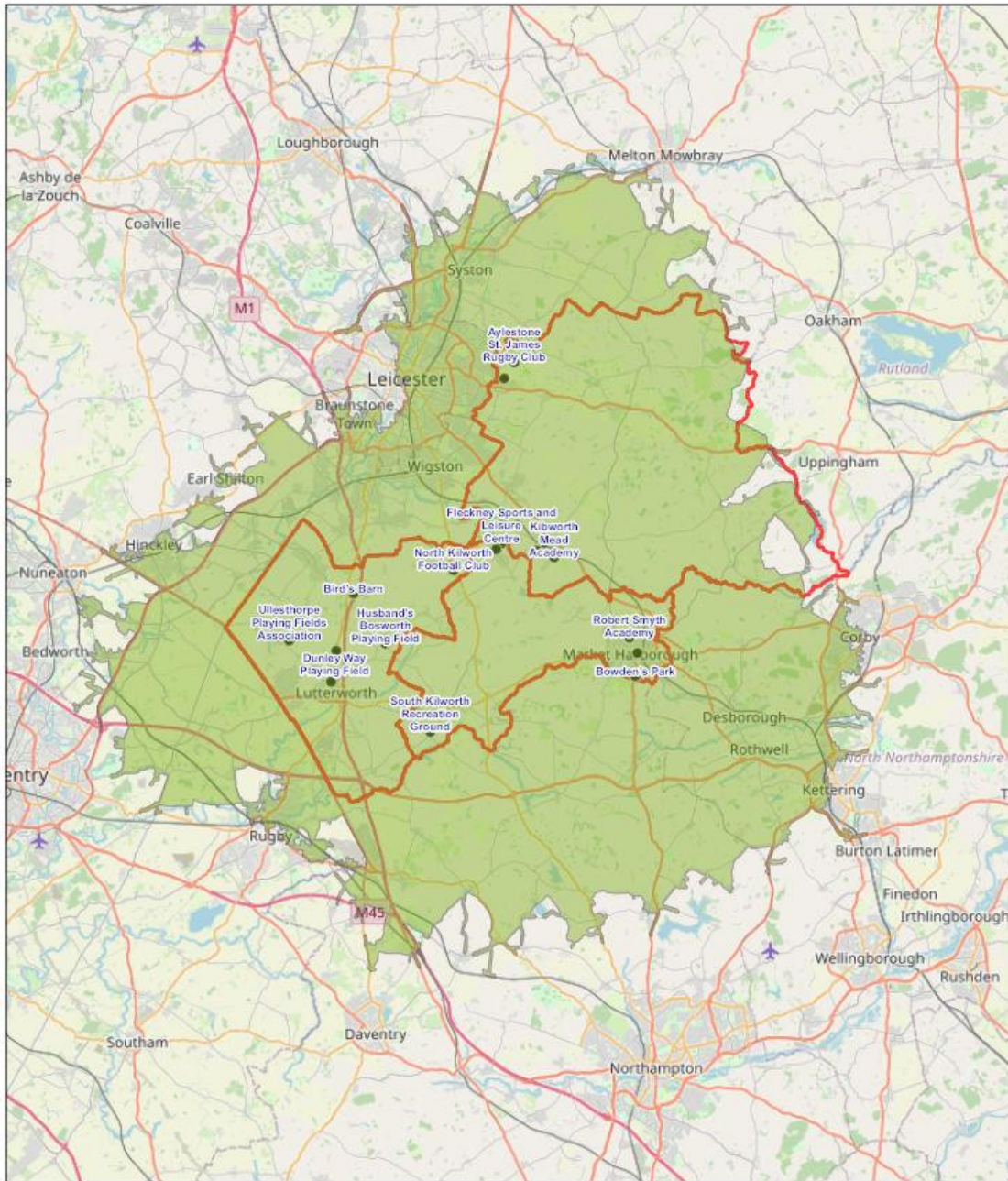
### 5.5 Geographical distribution

The geographical distribution of football pitches in Harborough has been assessed by identifying catchments to illustrate local level accessibility. This is based on the results of the clubs' survey, which identifies 15-minutes travel time as the typical maximum for grass pitches and 20 minutes for '3G' football turf pitches. Maps for each type of football pitch are overleaf and they illustrate the following:

- **Adult grass pitches:** The whole of Harborough district is within 15 minutes of an adult grass pitch, with the exception of a small area in the extreme east of the district.
- **Youth 11v11 pitches:** The whole of Harborough district is within 15 minutes of a youth 11v11 pitch, with the exception of an area in the extreme north and east of the district.
- **Youth 9v9 pitches:** The whole of Harborough district is within 15 minutes of a youth 9v9 pitch, with the exception of an area in the extreme north and east of the district.
- **Mini 7v7 pitches:** The whole of Harborough district is within 15 minutes of mini 7v7 pitch, with the exception of a small area in the extreme east of the district.
- **Mini 5v5 pitches:** The whole of Harborough district is within 15 minutes of a mini 5v5 pitch, with the exception of an area in the extreme north and east of the district.
- **'3G' football turf pitches:** The whole of Harborough district is within 20 minutes of a '3G' football turf pitch, with the exception of an area in the north of the district.

### 5.5.1 Adult grass football

#### HARBOROUGH - Adult Football Pitches 15 Minutes Drive



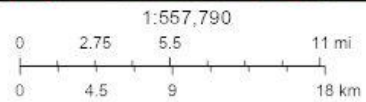
2/14/2022

15.0 Minutes

• ADULT FOOTBALL PITCHES

West Sub Area, Middle Sub Area, East Sub Area

Harborough District Boundary

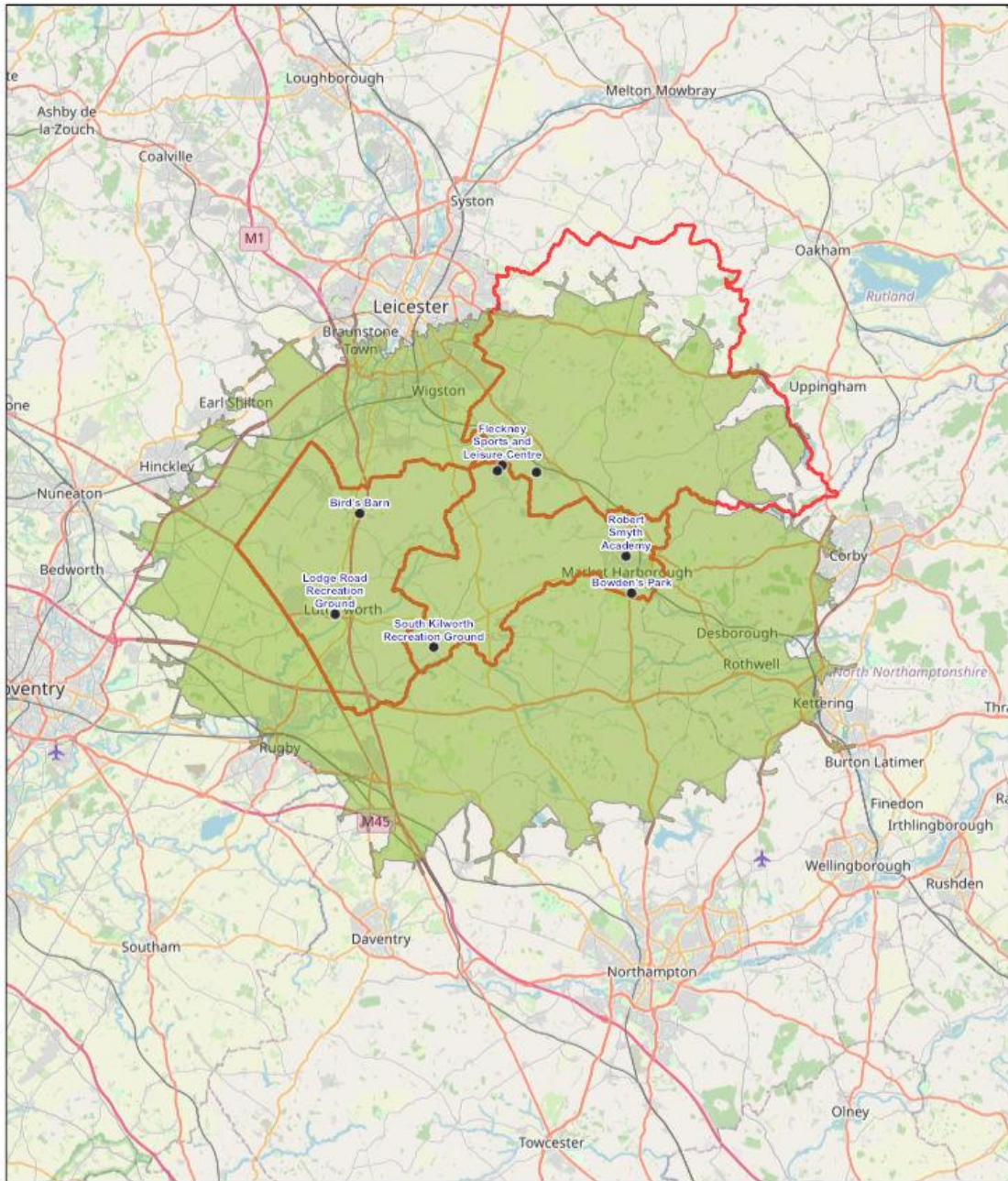


© OpenStreetMap (and) contributors, CC-BY-SA



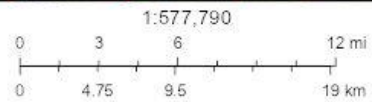
### 5.5.2 Youth 11v11 football

#### HARBOROUGH- Youth 11v11 Football Pitches 15 Minutes Drive



2/14/2022

- YOUTH 11V11 FOOTBALL PITCHES
- 15.0 Minutes
- ▭ West Sub Area, Middle Sub Area, East Sub Area
- ▭ Harborough District Boundary

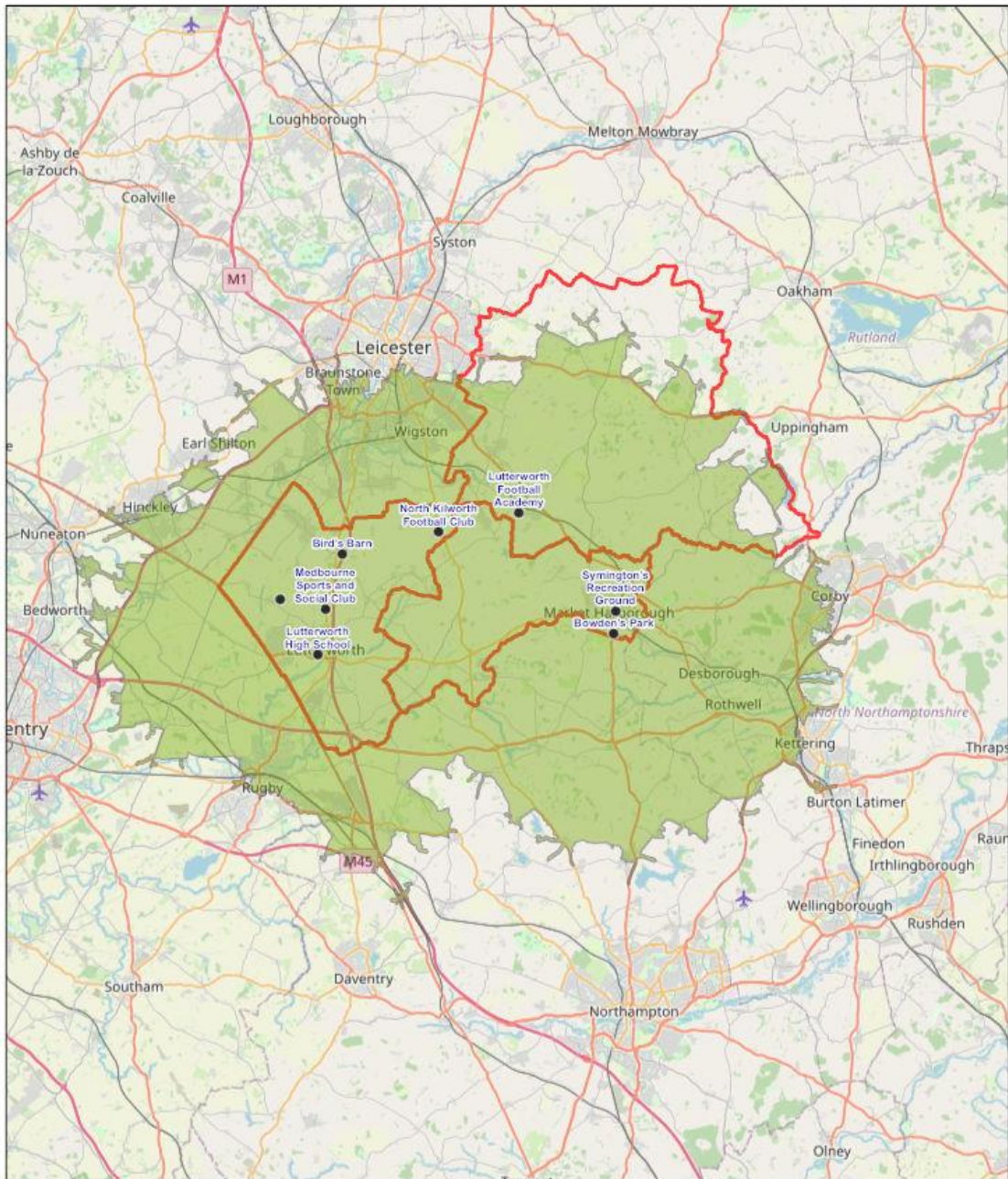


© OpenStreetMap (and) contributors, CC-BY-SA

### 5.5.3 Youth 9v9 pitches

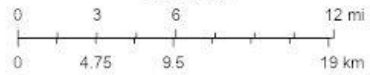


### HARBOROUGH - Youth 9v9 Football Pitches 15 Minutes Drive



2/14/2022

1:577,791



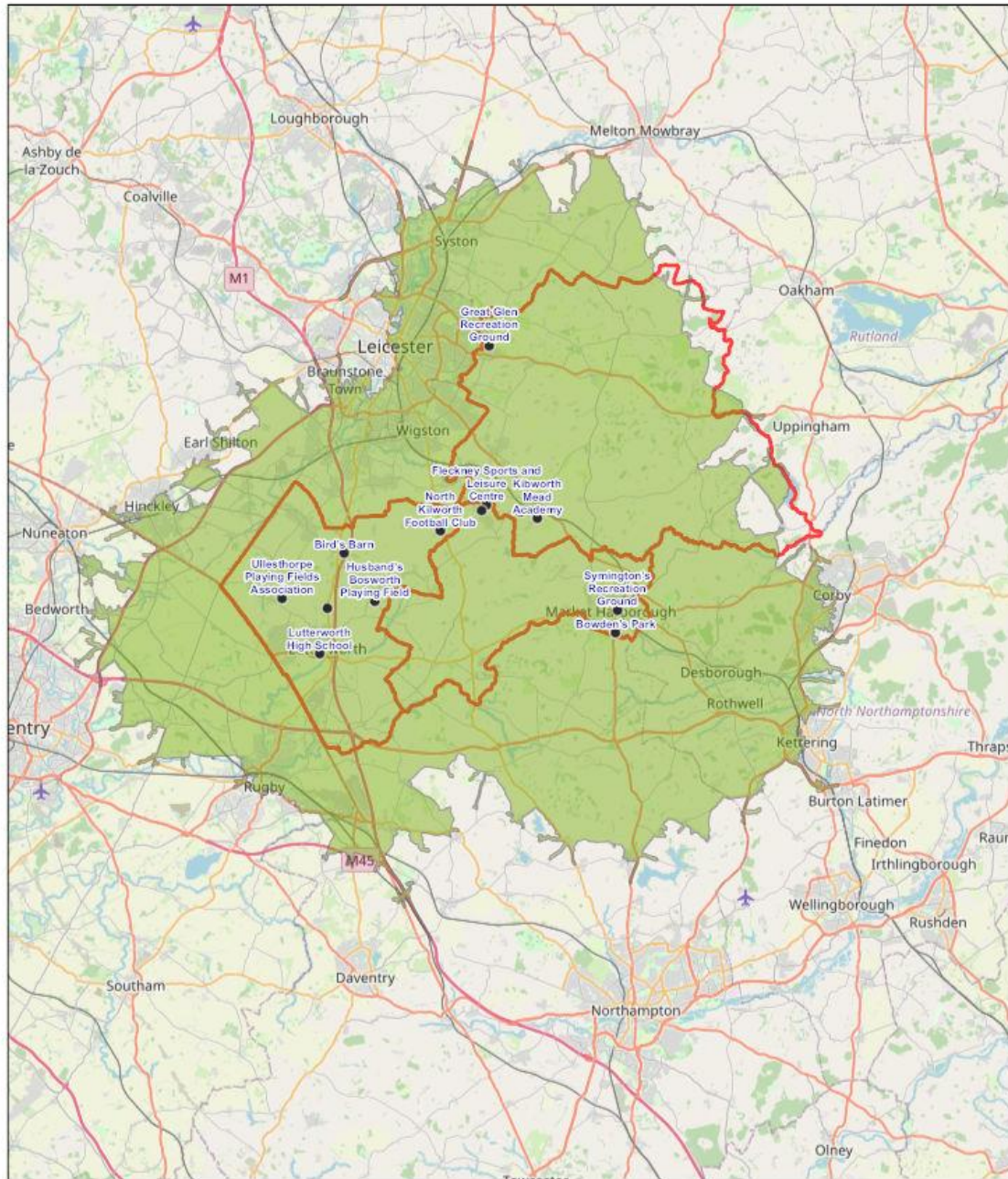
- YOUTH 9V9 FOOTBALL PITCHES
- 15.0 Minutes
- ▭ West Sub Area, Middle Sub Area, East Sub Area
- ▭ Harborough District Boundary

© OpenStreetMap (and) contributors, CC-BY-SA



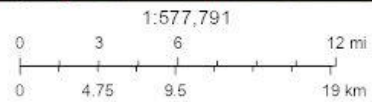
### 5.5.4 Mini-soccer 7v7 pitches

#### HARBOROUGH- Mini Soccer 7v7 Pitches 15 Minutes Drive



2/14/2022

- MINI SOCCER 7V7 PITCHES
- 15.0 Minutes
- ▭ West Sub Area, Middle Sub Area, East Sub Area
- ▭ Harborough District Boundary

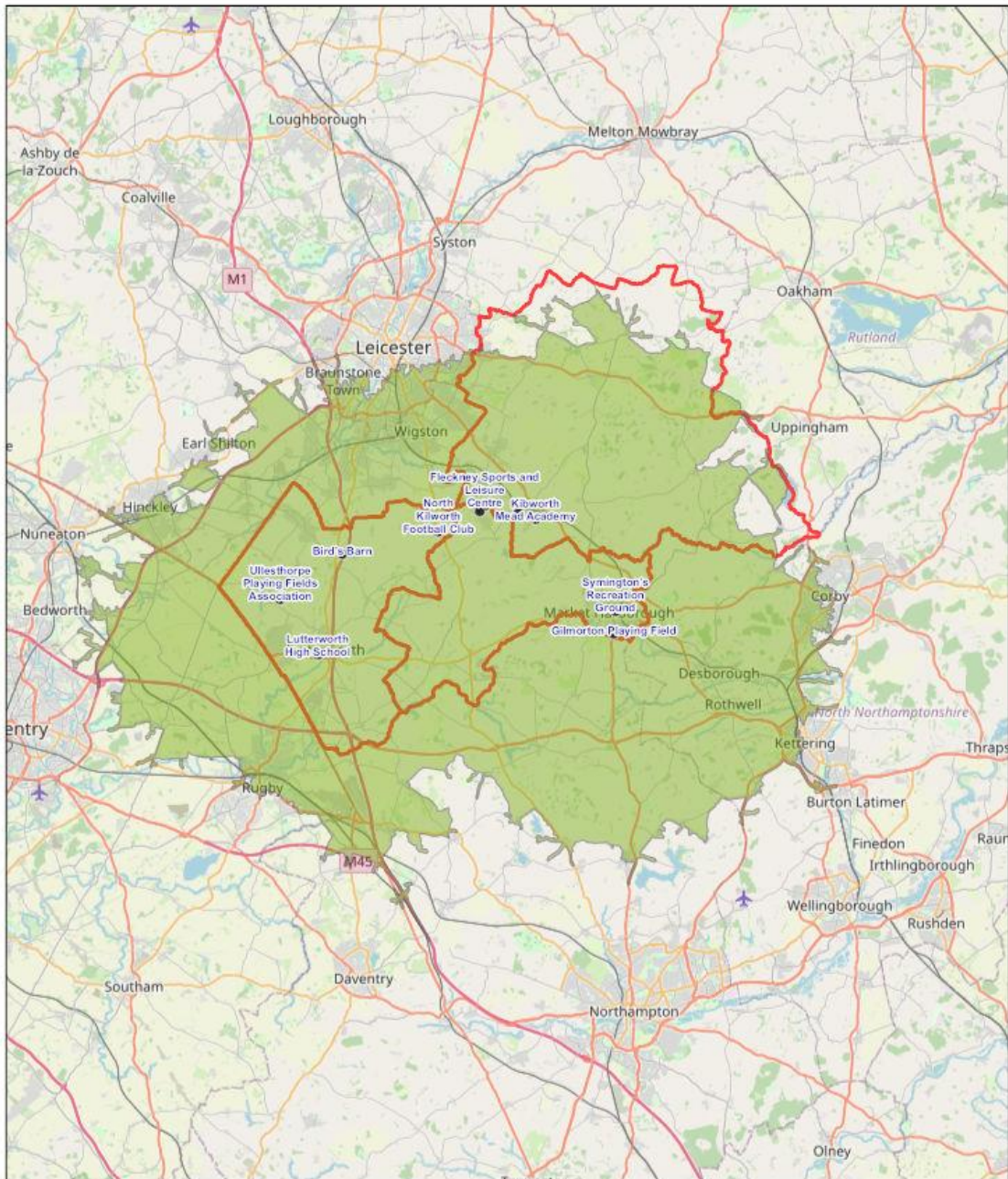


© OpenStreetMap (and) contributors, CC-BY-SA

### 5.5.5 Mini-soccer 5v5 pitches

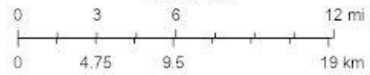


### HARBOROUGH - Mini Soccer 5v5 Pitches 15 Minutes Drive



2/14/2022

1:577,790



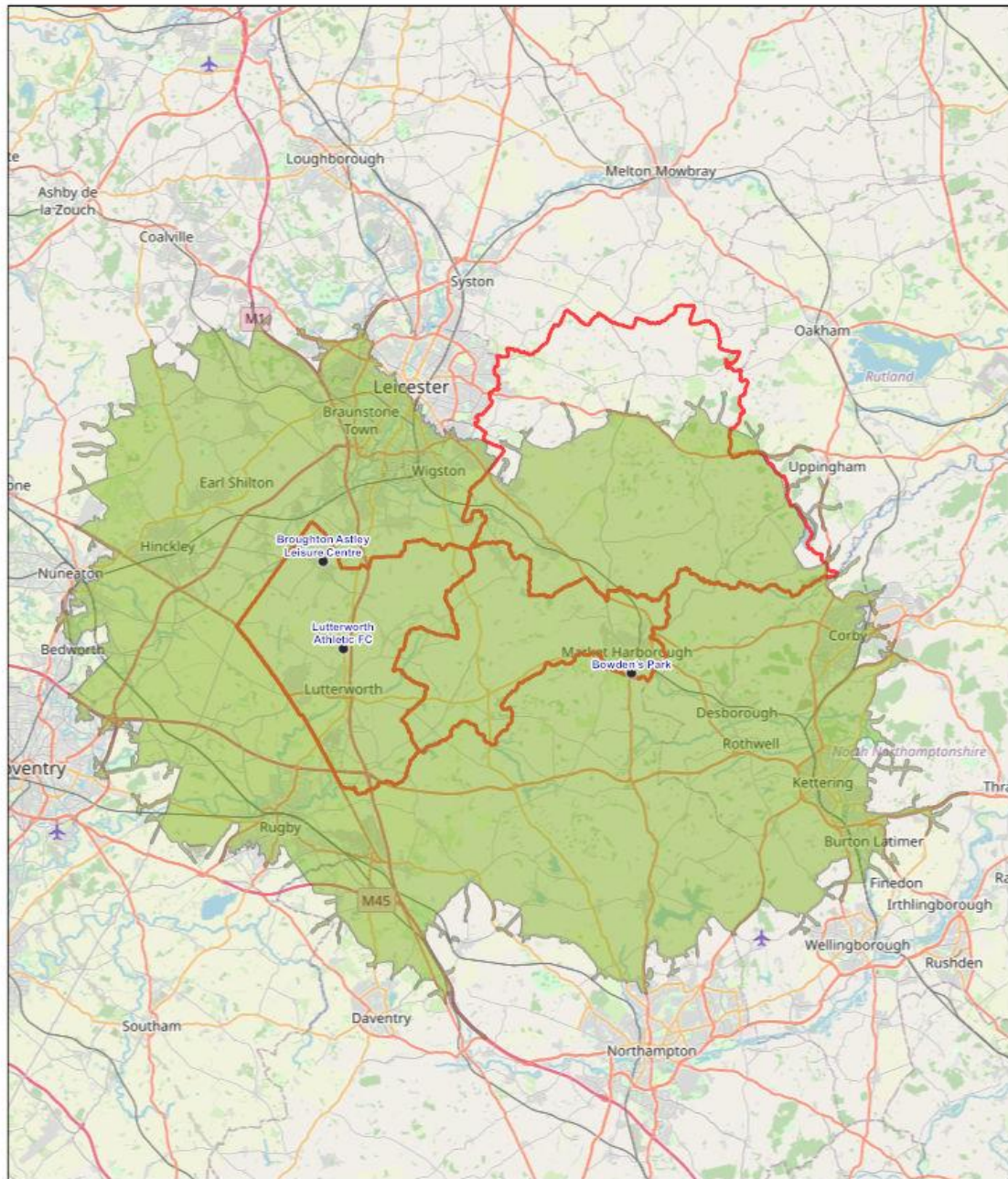
- MINI SOCCER 5V5 PITCHES
- 15.0 Minutes
- ▭ West Sub Area, Middle Sub Area, East Sub Area
- ▭ Harborough District Boundary

© OpenStreetMap (and) contributors, CC-BY-SA

### 5.5.6 '3G' football turf pitches

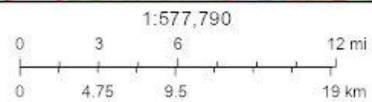


## HARBOROUGH - Full-sized 3G Football Turf Pitches 20 Mins Drive



2/14/2022

- FULL-SIZED 3G FOOTBALL TURF PITCHES
- 20.0 Minutes
- ▭ West Sub Area, Middle Sub Area, East Sub Area
- ▭ Harborough District Boundary



© OpenStreetMap (and) contributors, CC-BY-SA

### 5.6 The views of local stakeholders

#### 5.6.1 Leicestershire and Rutland FA

Consultation with the Leicestershire and Rutland FA highlighted that:

- **Women and girls football:** The FA has big ambitions for the female game. To achieve this requires a combined effort across four pathways: education, recreation, competition and talent.
  - Education environments have a huge impact on the first experience of football for young girls. This pathway can offer many opportunities for females of all ages to develop and grow a lifelong interest in football.
  - FA Wildcats girls football centres provide the first step on the recreational pathway, the programme provides girls aged 5-11 with regular opportunities to play football in a fun and engaging environment. Leicestershire and Rutland operates a number of Wildcats girls sessions and the priority is to grow this activity to 15 successful and sustainable centres across the county.
  - There are 11 female teams in Harborough district; this is comparable to local areas of a similar size. The County FA's priority is to support existing clubs to grow and encourage more clubs to develop playing opportunities for females. The Leicestershire Women and Girl's League was formed through a merger of two separate leagues in 2020.
  - For talented players, the nearest FA Regional Talent Club (RTC) is Leicester City Women's FC which is located in Leicester City. Higher level talent pathway opportunities are also provided regionally and nationally by the FA, culminating in the England Women's national squads. The nearest Women's Super League team is Leicester City Women's FC which provides player pathway opportunities for gifted and talented female players and a spectator interest for fans.
- **Disability football:** In Harborough district there are two football teams specifically for people with a disability. It is a priority of the County FA to grow this provision. Kibworth Town FC will affiliate an additional disability team in season 2022/23.
- **Recreational football:** Recreational football is played where facilities are typically booked and there might be someone to help organise. Examples include FA 'Just Play' sessions, walking football and casual pitch hire for small-sided match play. There are currently 12 FA 'Just Play' centres in Leicestershire and Rutland and the County FA is working towards having 15 in place by 2021. 16 walking football sessions are delivered at/by a range of community organisation including leisure centres, community centres and clubs. The County FA has prioritised walking football and Just Play for further growth. Other local recreational football programmes are primarily delivered through Leicester City Community Trust projects.
- **'3G' pitches:** There is potential to share the use of '3G' pitches with rugby users in the district.

## 5.6.2 Local football clubs

**Borough Alliance FC:** The club commented that 'we are unable to access enough suitable winter training facilities in the local area to meet the demands of the club'.

**Harborough Town FC:** The club made the following comments:

- 'The club would like to have a fenced, floodlit hybrid grass pitch for academy teams and to provide additional covered accommodation in the main ground plus a dedicated covered disability platform. The club would also like to build a small gymnasium and to provide community rooms as an extension in the roof of the clubhouse'.
- 'The first team changing room and the away team changing room for first team games will need increasing to 16.8m square if the club is promoted to step 4 of the National League System'.
- 'The football facility at HTFC is one of the best in the country but we are now at max capacity and need either a floodlight hybrid or AGP to meet demand and anticipated growth over the next five years'.

**Kibworth Town FC:** The club made the following comments:

- 'Masterplans are already developed for expanding onto adjoining fields to cope with the 400% increase in participation since 2015'.
- 'Our 'internal waiting list' could support additional teams, specifically a Sunday 11v11 men's team and additional teams throughout the age groups'.
- 'We have outgrown our current site with pitches overused and little to no additional capacity. This is preventing us from creating an additional men's side and a new women's team offering. Whilst there is a 9v9 3G facility at The Kibworth Mead Academy, it was somewhat short-sighted to create a 9v9 facility that cannot be used for the school matches beyond Yr7/U12 for boys and Yr8/U13 for girls'.
- 'We'd prefer to be located at one location for ease of logistics and for the commercial sustainability of the club. The school offers the club no potential income streams to support the operations of the club'.
- 'Kibworth Town FC has seen participation grow exponentially since 2015 and now encompasses 36+ football teams plus 2 additional U5/U6 development squads not included within the questions of this survey and 7 Futsal teams, again not covered within the scope of this survey. During this time the female playing numbers have grown from 3 to 156. The club comprises about 700 regular playing members and about 70 volunteer coaches. The club has outgrown our current facilities and DESPERATELY need larger facilities to support a thriving, ever-expanding club supporting not only local residents for Football, but we're now the home to Kibworth Coyotes Ladies Rounders Club and other local keep fit groups'.



- 'The demand figures on grass pitches are often seasonal, as clubs use '3G' training facilities wherever possible in the winter. Therefore for six months of the year, the weekly demand on the grass pitches is probably far greater as clubs return to the grass to save on pitch hire during the lighter evenings. Kibworth's 11v11 pitches, for example, may have the equivalent of 3-4 matches per pitch each weekend and then maybe 8 hours of training through the week. Undrained pitches, such as those at Kibworth and many others around the district, are recommended for only 2 hours of match equivalent use per week. Our pitches get up to 16 hours of use in the spring and autumn'.
- 'Unauthorised use of pitches is a major factor on pitch wear - we'd estimate around 1-2 hours use in the school holidays each day by local school children'.
- The new 3G facility at Lutterworth will not relieve pressures on the need for additional 3G space further East as 20-minutes' drive time in evening traffic doesn't even reach the A5199. A 11v11 3G pitch in Kibworth could be developed on the Birds Barn site. This facility would be within a 20-minute drive of a far broader population from the edge of Desborough, all of Market Harborough in the south, Kibworth, Fleckney, The Langtons in the East, Great Glen, Most of Oadby and Wigston and as far as Clarendon Park/Knighton in Leicester to the North'.

**Lutterworth Town FC:** The club commented that 'the male first team has no training pitch this season and for the last 7 years has trained outside of Harborough District. The juniors have a lack of pitches. A lack of 11-a-side pitches is a major concern'.

**Medbourne FC:** The club made the following comments:

- 'Membership has increased due to another team folding and joining us a reserve team this season, however without the addition of a second team, membership would have decreased'.
- 'We have our own pitch for matchdays, however we have to use alternative floodlit all-weather pitches for training. It proved extremely difficult to secure a booking this year with every facility throughout Corby and Kettering, as well as Uppingham and Harborough being fully booked during midweek. We eventually managed to find the last available spot at Montsaye Academy (Rothwell) otherwise we may not have been able to train this season'.
- 'It would be brilliant if another artificial pitch was available for hire somewhere. The ones at Harborough Town are pretty much fully utilised by their own teams and the sand based surface at Welland Park isn't really suitable for football'.

## **5.7      *Developments since the 2018 PPS***

The key developments since the assessment of football needs in the 2018 PPS are as follows:

- Expressed demand has increased significantly, with the number of teams playing in Harborough District has increased from 180 in 2017/17 to 244 in 2022/23, a 35.6% increase.
- '3G' football turf pitch provision has improved with the installation of full-sized pitches at Bowden's Park and Broughton Astley Leisure Centre and the imminent construction of the Lutterworth Town Stadium Pitch but is still below the seven pitches required to meet the FA's guideline figure of one pitch per 38 teams.
- Despite the increases in demand, there are fewer grass football pitches in use in 2021 compared with 2018, which suggests intensified usage of pitches that were already close to capacity. The quality (and related carrying capacity) of the pitches at Bird's Barn (Kibworth Town FC) have been improved with secondary drainage works since 2018.

The implications of these changes are assessed below.

### **5.8 The implications for football in Harborough district**

Analysis of local supply of football pitches in Harborough indicates the following:

- **Local clubs:** There is a strong network of England Accredited football clubs in Harborough district, providing high quality coaching and playing opportunities.
- **Increased demand:** The number of FA-affiliated football teams in the district has increased from 180 in 2017/17 to 244 in 2022/23, a 35.6% increase. The growth is apparent in all age groups apart from Mini 5v5.
- **Unmet demand:** Consultation with local clubs indicated that a total of 37 additional teams of all age groups could be accommodated in Harborough district if the quality and quantity of pitch provision was improved, an increase of 11.5% from the number of existing teams.
- **Provision in neighbouring areas:** Assessments of football pitch provision in Playing Pitch Strategies in neighbouring areas mostly indicate deficiencies, particularly for '3G' football turf pitches. The absence of any available spare capacity in surrounding areas means that there is no scope for exporting football demand from Harborough district.
- **Grass pitch supply:** An examination of grass pitch supply suggests that in quantitative terms there is little if any local spare capacity.
- **Grass pitch quality:** Just over 10% of pitches in the district are rated as 'poor' quality, with consequent reductions in carrying capacity. Several others suffer from poor drainage and so are rated at the lower end of 'standard' quality.
- **Changing facilities:** 30 pitches in the district (33.7%) are served by 'poor' quality or no changing facilities.



- **Unsecured access:** 18.2% of the pitches with community use and used are on sites without secured use, meaning that in theory community use could be rescinded at any time.
- **'3G' football turf pitches:** There are three full-sized '3G' pitches in Harborough district (plus a fourth pitch under construction at Lutterworth Athletic FC), but many local clubs have identified the lack of floodlit, all-weather pitches as an impediment to the development of the game locally.

## 5.9 Assessment of current needs

### 5.9.1 Introduction

To assess whether the current supply of pitches is adequate to meet existing demand an understanding of the situation at all sites available to the community needs to be developed. This is achieved by providing a brief overview for each site, which comprises:

- A comparison between the carrying capacity of a site with how much demand currently takes place there. The carrying capacity of a site is defined as the amount of play it can regularly accommodate without adversely affecting its quality and use. Demand is defined in terms of the number of 'match equivalent sessions' at each site. A 'match equivalent session' represents the wear and tear on a pitch equivalent to a formal match, so the impact of training sessions and unauthorised use can also be accounted for.
- An indication of the extent to which pitches are being used during their peak periods.

The site overviews identify the extent to which pitches are:

- **Being overplayed:** Where use exceeds the carrying capacity (highlighted in red in the tables below).
- **Being played to the level the site can sustain:** Where use matches the carrying capacity (highlighted in yellow in the tables below).
- **Potentially able to accommodate some additional play:** Where use falls below the carrying capacity (highlighted in green in the tables below).

In line with the PPS guidance, the following assumptions have been made in relation to the number of weekly match equivalents that can be accommodated by different quality pitches:

<b>Pitch type</b>	<b>Good quality</b>	<b>Standard quality</b>	<b>Poor quality</b>
Adult	3	2	1
Youth 11v11	4	2	1
Youth 9v9	4	2	1

Harborough District Council  
Playing Pitch and Outdoor Sports Facilities Strategy

Mini-soccer 7v7	6	4	2
Mini-soccer 5v5	6	4	2

### 5.9.2 Adult pitches

<i>Site</i>	<i>Pitches</i>	<i>Users</i>	<i>Weekly capacity</i>	<i>Weekly demand</i>	<i>Weekly balance</i>	<i>Peak capacity</i>	<i>Peak demand</i>	<i>Peak balance</i>
Aylestone St. James Rugby Club	1	<i>Aylestone St. James FC</i>	3.0	1.0	+2.0	1.0	1.0	Balance d
Bird's Barn	2	Kibworth Town FC	6.0	7.0	-1.0	2.0	4.0	-2.0
Bowden's Park	3	Harborough Town FC Brooke House College FC Cherry Tree	6.0	6.0	Balance d	3.0	3.0	Balance d
Dunley Way Playing Field	1	Lutterworth Town FC	3.0	1.0	+2.0	1.0	1.0	Balance d
Dunton & Broughton Rangers FC	1	Dunton & Broughton Utd FC <i>Oadby &amp; Wigston ladies FC</i>	3.0	3.0	Balance d	1.0	1.0	Balance d
Fleckney Sports and Leisure Centre	1	Fleckney Athletic FC Fleckney Masters FC	3.0	3.0	Balance d	1.0	1.0	Balance d
Frolesworth Road Recreation Ground	2	Dunton & Broughton Utd FC	2.0	2.0	Balance d	2.0	1.0	+1.0
Gilmorton Playing Field	1	Gilmorton FC	2.0	1.0	+1.0	1.0	1.0	Balance d
Great Glen Recreation Ground	1	Glen Villa FC	2.0	2.0	Balance d	1.0	2.0	-1.0
Houghton Field	2	Houghton Rangers FC	6.0	4.0	+2.0	2.0	2.0	Balance d
Husband's Bosworth Playing Field	1	North Kilworth FC	3.0	2.0	+1.0	1.0	1.0	Balance d
Lutterworth Football Academy	2	Lutterworth Athletic FC River Swift FC	4.0	4.0	Balance d	2.0	2.0	Balance d
Medbourne Sports and Social Club	1	Medbourne FC	2.0	2.0	Balance d	1.0	1.0	Balance d
North Kilworth Football Club	2	AFC North Kilworth	4.0	4.0	Balance d	2.0	2.0	Balance d
Robert Smyth Academy	1	Borough Alliance FC Robert Smyth Academy	2.0	2.0	Balance d	1.0	1.0	Balance d
South Kilworth Recreation Ground	1	North Kilworth FC	2.0	2.0	Balance d	1.0	1.0	Balance d

Symington's Recreation Ground	2	Borough Alliance FC	4.0	3.0	+1.0	2.0	2.0	Balance d
Thomas Estley Community College	1	Dunton & Broughton Utd FC Thomas Estley Comm Coll	2.0	2.0	Balanced	1.0	1.0	Balance d
<b>TOTALS</b>	<b>26</b>	<b>-</b>	<b>59.0</b>	<b>51.0</b>	<b>+8.0</b>	<b>26.0</b>	<b>27.0</b>	<b>-1.0</b>

The supply-demand balance for adult pitches by sub-area is as follows:

<b>Sub-area</b>	<b>Weekly capacity</b>	<b>Weekly demand</b>	<b>Weekly balance</b>	<b>Peak capacity</b>	<b>Peak demand</b>	<b>Peak balance</b>
West	25.0	19.0	+6.0	12.0	13.0	-1.0
Middle	11.0	12.0	-1.0	5.0	4.0	+1.0
East	23.0	20.0	+3.0	9.0	10.0	-1.0
<b>HARBOROUGH</b>	<b>59.0</b>	<b>51.0</b>	<b>+8.0</b>	<b>26.0</b>	<b>27.0</b>	<b>-1.0</b>

The key findings are:

- Peak time utilisation shows an overall deficit at two sites, is balanced at 16 sites and shows spare capacity at one site.
- The collective peak time supply-demand position in the district is a deficit of 1.0 match equivalent session. This figure increases to a deficit of 4.0 match equivalent sessions if the education sites without secured community access are excluded.
- The sub-area analysis shows that there is a peak time deficit in the West and East sub-areas.

<i>Site</i>	<i>Pitches</i>	<i>Users</i>	<i>Weekly capacity</i>	<i>Weekly demand</i>	<i>Weekly balance</i>	<i>Peak capacity</i>	<i>Peak demand</i>	<i>Peak balance</i>
Bowden's Park	2	Harborough Town FC	4.0	8.0	-4.0	2.0	4.0	-2.0
Fleckney Sports and Leisure Centre	2	Fleckney Athletic FC	8.0	3.0	+5.0	2.0	2.0	Balanced
Houghton Field	(1)	Houghton Rangers FC	2.0	2.0	Balanced	1.0	1.0	Balanced
Lutterworth Football Academy	1	Lutterworth Athletic FC	2.0	4.0	-2.0	1.0	2.0	-1.0
Lutterworth High School	2	Lutterworth Town FC Lutterworth High School	4.0	4.0	Balanced	2.0	4.0	-2.0
Robert Smyth Academy	1	Borough Alliance FC Robert Smyth Academy	2.0	3.0	-1.0	1.0	2.0	-1.0
South Kilworth Recreation Ground	1	North Kilworth FC	2.0	3.0	-1.0	1.0	2.0	-1.0
Thomas Estley Comm. College	2	Dunton & Broughton Utd FC Thomas Estley Comm Coll	4.0	4.0	Balanced	2.0	2.0	Balanced
<b>TOTALS</b>	<b>11(1)</b>	<b>-</b>	<b>28.0</b>	<b>31.0</b>	<b>-3.0</b>	<b>12.0</b>	<b>19.0</b>	<b>-7.0</b>

### 5.9.3 Youth 11v11 pitches

The supply-demand balance for youth 11v11 pitches by sub-area is as follows:

<i>Sub-area</i>	<i>Weekly capacity</i>	<i>Weekly demand</i>	<i>Weekly balance</i>	<i>Peak capacity</i>	<i>Peak demand</i>	<i>Peak balance</i>
West	8.0	10.0	-2.0	4.0	8.0	-4.0
Middle	18.0	19.0	-1.0	9.0	12.0	-3.0
East	2.0	2.0	Balanced	1.0	1.0	Balanced
<b>HARBOROUGH</b>	<b>28.0</b>	<b>31.0</b>	<b>-3.0</b>	<b>14.0</b>	<b>21.0</b>	<b>-7.0</b>

The key findings are:

- Peak time use shows a deficit at seven sites with balanced provision at four sites.
- The collective peak time supply-demand position in the district is a deficit of 7.0 match equivalent sessions. The deficit increases to 16.0 match equivalent sessions if the education sites without secured community access are excluded.
- The sub-area analysis shows that there is a peak time deficit in the West and Middle sub-areas.

### 5.9.4 Youth 9v9 pitches

<i>Site</i>	<i>Pitches</i>	<i>Users</i>	<i>Weekly capacity</i>	<i>Weekly demand</i>	<i>Weekly balance</i>	<i>Peak capacity</i>	<i>Peak demand</i>	<i>Peak balance</i>
Bird's Barn	2	Kibworth Town FC	8.0	7.0	+1.0	2.0	3.0	-1.0
Bowden's Park	3	Harborough Town FC	6.0	5.0	+1.0	3.0	5.0	-1.0
Lodge Road Recreation Ground	1	Fleckney Athletic FC	2.0	2.0	Balanced	1.0	1.0	Balanced
Lutterworth Football Academy	1	Lutterworth Athletic FC	2.0	4.0	-2.0	1.0	2.0	-1.0
Lutterworth High School	2	Lutterworth Town FC Lutterworth High School	4.0	2.0	+2.0	2.0	2.0	Balanced
Medbourne Sports Club	1	No recorded use	2.0	0.0	+2.0	1.0	0.0	+1.0
North Kilworth FC	1	AFC North Kilworth	1.0	2.0	-1.0	1.0	1.0	Balanced
Symington's Recreation Ground	1	Borough Alliance JFC	2.0	3.0	-1.0	1.0	3.0	-2.0
Ullesthorpe Playing Fields Association	1	Thompsons United FC	2.0	1.0	+1.0	1.0	1.0	Balanced
<b>TOTALS</b>	<b>13</b>	<b>-</b>	<b>29.0</b>	<b>26.0</b>	<b>+3.0</b>	<b>13.0</b>	<b>18.0</b>	<b>-5.0</b>

The supply-demand balance for youth 9v9 pitches by sub-area is as follows:

<i>Sub-area</i>	<i>Weekly capacity</i>	<i>Weekly demand</i>	<i>Weekly balance</i>	<i>Peak capacity</i>	<i>Peak demand</i>	<i>Peak balance</i>
West	9	14	-5.0	5	7	-2.0
Middle	8	5	+3.0	5	8	-3.0
East	12	7	+5.0	3	3	Balanced
<b>HARBOROUGH</b>	<b>29.0</b>	<b>26.0</b>	<b>+3.0</b>	<b>13.0</b>	<b>18.0</b>	<b>-5.0</b>

The key findings are:

- There is a peak time deficit at four sites, a balance at four sites and spare capacity at one site.
- The collective peak time deficit is 5.0 match equivalent sessions, which increases to 6.0 match equivalent sessions if the site without secured community access is excluded.

- The sub-area analysis shows that there is a peak time deficit in both the West and Middle sub-areas.

### 5.9.5 Mini-soccer 7v7 pitches

<i>Site</i>	<i>Pitches</i>	<i>Users</i>	<i>Weekly capacity</i>	<i>Weekly demand</i>	<i>Weekly balance</i>	<i>Peak capacity</i>	<i>Peak demand</i>	<i>Peak balance</i>
Bird's Barn	2	Kibworth Town FC	12.0	4.0	+8.0	2.0	2.0	Balance d
Bowden's Park	2	Harborough Town FC	8.0	5.0	+3.0	2.0	3.0	-1.0
Fleckney Sports and Leisure Centre	2	Fleckney Athletic FC	12.0	2.0	+10.0	2.0	1.0	+1.0
Gilmorton Playing Field	1	No recorded use	4.0	0.0	+4.0	1.0	0.0	+1.0
Great Glen Recreation Ground	3	Glen Villa FC	6.0	1.0	+5.0	1.0	1.0	+2.0
Houghton Field	1	Houghton Rangers FC	4.0	2.0	+2.0	1.0	1.0	Balance d
Husband's Bosworth Playing Field	1	North Kilworth FC	6.0	2.0	+4.0	1.0	1.0	Balance d
John Wycliffe Primary School	1	No recorded use	4.0	0.0	+4.0	1.0	0.0	+1.0
Lutterworth Football Academy	1	Lutterworth Athletic FC	4.0	1.0	+3.0	1.0	1.0	Balance d
Lutterworth High School	1	Lutterworth Town FC	8.0	2.0	+6.0	1.0	1.0	Balance d
Medbourne Sports Club	1	No recorded use	4.0	0.0	+4.0	1.0	0.0	+1.0
North Kilworth FC	1	AFC North Kilworth	2.0	2.0	Balance d	1.0	1.0	Balance d
Symington's Recreation Ground	1	Borough Alliance JFC	4.0	3.0	+1.0	1.0	3.0	-2.0
Ullesthorpe Playing Fields Association	1	Thompsons United FC	4.0	5.0	-1.0	1.0	3.0	-2.0
<b>TOTALS</b>	<b>19</b>	<b>-</b>	<b>80.0</b>	<b>29.0</b>	<b>+51.0</b>	<b>19.0</b>	<b>18.0</b>	<b>+1.0</b>

The supply-demand balance for mini-soccer 7v7 pitches by sub-area is as follows:

<i>Sub-area</i>	<i>Weekly capacity</i>	<i>Weekly demand</i>	<i>Weekly balance</i>	<i>Peak capacity</i>	<i>Peak demand</i>	<i>Peak balance</i>
West	26.0	7.0	+19.0	7.0	6.0	+1.0
Middle	12.0	8.0	+4.0	2.0	5.0	-3.0
East	42.0	14.0	+28.0	10.0	7.0	+3.0
<b>HARBOROUGH</b>	<b>80.0</b>	<b>29.0</b>	<b>+51.0</b>	<b>19.0</b>	<b>18.0</b>	<b>+1.0</b>

The key findings are:

- There is a peak time deficit at three sites, use is balanced at six sites and there is spare capacity at five sites.



- The collective peak time position shows spare capacity of 1.0 match equivalent session, which reduces to a deficit of 1.0 match equivalent session if the site without secured access is excluded.
- There is a collective peak time capacity deficit in the Middle sub-area.

### 5.9.6 Mini-soccer 5v5 pitches

<i>Site</i>	<i>Pitches</i>	<i>Users</i>	<i>Weekly capacity</i>	<i>Weekly demand</i>	<i>Weekly balance</i>	<i>Peak capacity</i>	<i>Peak demand</i>	<i>Peak balance</i>
Bird's Barn	2	Kibworth Town FC	12.0	3.0	+5.0	2.0	2.0	Balanced
Fleckney Sports and Leisure Centre	4	Fleckney Athletic FC	26.0	1.0	+24.0	4.0	1.0	+3.0
Gilmorton Playing Field	2	No recorded use	8.0	0.0	+8.0	2.0	0.0	+2.0
Houghton Field	(1)	Houghton Rangers FC	4.0	1.0	+2.0	1.0	1.0	Balanced
Lutterworth Football Academy	2	Lutterworth Athletic FC	12.0	1.0	+9.0	2.0	1.0	+1.0
Lutterworth High School	1	Lutterworth Town FC	4.0	1.0	+1.0	1.0	1.0	Balanced
North Kilworth FC	1	AFC North Kilworth	2.0	1.0	+1.0	1.0	1.0	Balanced
Symington's Recreation Ground	1	Borough Alliance JFC	4.0	3.0	Balanced	1.0	2.0	-1.0
Ullesthorpe Playing Fields Association	2	Thompsons United FC	8.0	2.0	+3.0	2.0	2.0	Balanced
<b>TOTALS</b>	<b>15(1)</b>		<b>80.0</b>	<b>13.0</b>	<b>+67.0</b>	<b>16.0</b>	<b>11.0</b>	<b>+5.0</b>

The supply-demand balance for mini-soccer 5v5 pitches by sub-area is as follows:

<i>Sub-area</i>	<i>Weekly capacity</i>	<i>Weekly demand</i>	<i>Weekly balance</i>	<i>Peak capacity</i>	<i>Peak demand</i>	<i>Peak balance</i>
West	34.0	5.0	+29.0	8	4	+4.0
Middle	30.0	3.0	+27.0	5	4	+1.0
East	16.0	5.0	+11.0	3	3	Balanced
<b>HARBOROUGH</b>	<b>80.0</b>	<b>13.0</b>	<b>+67.0</b>	<b>16.0</b>	<b>11.0</b>	<b>+5.0</b>

The key findings are:

- Peak time utilisation shows an overall deficit at one site, it is balanced at five sites and there is spare capacity at three sites.
- The collective peak time spare capacity is 5.0 match equivalent sessions. This decreases to 4.0 match equivalent sessions if the education site without secured community access is excluded.

### 5.9.7 '3G' football turf pitches

There are three full-sized '3G' pitches in Harborough district (plus a fourth pitch under construction at Lutterworth Town FC). In addition, there are seven small-sided pitches.

Based upon the FA calculation that there should be one full-sized '3G' pitch per 38 teams and/or one small-sided pitch per 20 teams, these provide collectively the equivalent of 292 team training sessions per week. This compares with 267 teams in the district, so theoretically, there should be some spare capacity. However:

- Many local clubs have identified the lack of floodlit, all-weather pitches as an impediment to the development of the game locally.
- There is very limited spare capacity in the peak periods at existing pitches.
- There is an accessibility deficiency in the northern part of the East sub-area, based on a 20-minute drivetime catchment.
- If the 37 additional teams identified by local clubs as representing currently unmet demand are included, total team demand for 304 sessions per week cannot be met by current supply.

### 5.9.8 Use of hockey pitches for football

Due to the current shortfall in '3G' football turf pitches, most of the sand-filled artificial grass pitches in the district are used extensively for football training on midweek evenings, which makes them unavailable to cater for hockey.

<i>Site</i>	<i>Hockey use</i>	<i>Hockey use (%)</i>	<i>Football use</i>	<i>Football use (%)</i>	<i>Unused</i>	<i>Unused (%)</i>
Lutterworth College	6 hours	23.1%	15 hours	57.7%	5 hours	19.2%
Robert Smyth Academy	16 hours	50.0%	10 hours	31.2%	6 hours	18.8%
Welland Park Academy	8 hours	25.0%	12 hours	37.5%	12 hours	37.5%

## 5.10 Assessment of future needs

### 5.10.1 Population growth

The ONS 2018 sub-national population projections forecast a population of 104,839 by 2031, an increase of 9,302 (or 9.7%). Comparison of the projections for 2020 and 2031 shows that the percentage of people aged under 50 falls from 55.6% to 53.2%, with proportionate population increases amongst the over 50s.

### 5.10.2 Potential changes in demand

Consultation with local clubs indicated that the following additional teams could be accommodated in Harborough district if the quality and quantity of pitch provision was improved. The projected increase is equivalent to a 11.5% rise in current team numbers.

Harborough District Council  
 Playing Pitch and Outdoor Sports Facilities Strategy

<i>Club</i>	<b>Adult teams</b>	<b>Youth (11v1 1)</b>	<b>Youth (9v9)</b>	<b>Mini (7v7)</b>	<b>Mini (5v5)</b>
Borough Alliance FC	0	0	0	0	0
Glen Villa FC	1	0	0	0	0
Harborough Town FC	1	2	2	3	3
Houghton Rangers FC	0	0	0	0	0
Kibworth Town FC	2	3	2	3	3
Lutterworth Town FC	1	5	2	2	2
Medbourne FC	0	0	0	0	0
<b>TOTALS</b>	<b>5</b>	<b>10</b>	<b>6</b>	<b>8</b>	<b>8</b>

### 5.10.3 Site-specific pressures

Harborough District Council needs to identify sites upon which it can deliver its housing targets. Whilst planning policy offers protection to playing pitches, some sites may be vulnerable unless it can be proved that they are needed to accommodate existing or future shortfalls in supply or serve some other green space functions. At present, the analysis in section 5.9 above shows that there is no effective spare capacity in the peak periods, so the case for retention is strong.

### 5.10.4 Potential changes in supply

These are as follows:

- A '3G' football turf pitch is due to be installed at the Lutterworth Football Academy.
- Welland Park Academy plans to resurface its artificial grass pitch with a GEN2 multisport carpet which will meet the needs of football and hockey.
- Pitch provision associated with the West of Leicester Road development in Market Harborough may be achieved via an off-site financial contribution, potentially involving a '3G' football turf pitch in conjunction with Borough Alliance FC.
- An adult grass football pitch will be provided in conjunction with the housing development at Uppingham Road, Bushby.
- Lutterworth High School has aspirations to provide a '3G' football turf pitch.
- Kibworth Town FC has aspirations to provide a '3G' football turf pitch at Bird's Barn, Kibworth.
- There are proposals to provide additional grass football pitches on the outfield of Illston Abey Cricket Club.

### 5.10.5 Existing spare capacity

The existing position for grass football pitch peak-time capacity has been calculated in terms of 'match equivalent sessions' in section 5.9 above and is as follows, for all sites and for sites with secured community access only. It is important to note that the shortfalls cannot be met by improvements to pitch quality (and related capacity), because they relate to peak period demand, which is defined by the number of pitches:

<i>Pitch type</i>	<b>All sites</b>	<b>Secured sites</b>
Adult	-1.0	-4.0
Youth 11v11	-7.0	-16.0
Youth 9v9	-5.0	-6.0
Mini-soccer 7v7	+1.0	-1.0
Mini-soccer 5v5	+5.0	+4.0

Peak-time utilisation rates of the full-sized '3G' pitches in the district is as follows. There is no effective spare capacity.

<i>Site</i>	<b>Midweek used hours</b>	<b>% capacity</b>	<b>Saturday used hours</b>	<b>% capacity</b>	<b>Sunday used hours</b>	<b>% capacity</b>
Bowden's Park (pitch one)	18	90%	8	100%	6	75%
Bowden's Park (pitch two)	20	100%	8	100%	6	75%
Broughton Astley Leisure Centre	20	100%	8	100.0	4	50%
<b>TOTALS</b>	<b>58</b>	<b>96.7%</b>	<b>24</b>	<b>100%</b>	<b>16</b>	<b>66.7%</b>

#### 5.10.6 Future grass pitch needs

Future formal grass pitch needs to 2031 are modelled below using 'Team Generation Rates' (TGRs), which identify how many people in a specified age group in the district are required to generate one team. These are then applied to projected changes in population to identify the likely number of teams in the future:

<b>Sport</b>	<b>Age range</b>	<b>Current population</b>	<b>Current teams</b>	<b>Unmet demand</b>	<b>TGR</b>	<b>Population 2031</b>	<b>Teams 2031</b>	<b>Extra teams</b>
<b>Adult male football</b>	17-45	14,245	61	2	1: 226	15,597	70	+6
<b>Adult female football</b>	17-45	14,629	2	3	1: 2,926	15,840	5	0
<b>Boys youth 11v11 football</b>	12-16	3,074	70	5	1: 41	3,026	74	-1
<b>Girls youth 11v11 football</b>	12-16	2,927	9	5	1: 209	2,906	14	-1
<b>Boys youth 9v9 football</b>	10-11	1,282	31	2	1: 39	1,214	31	-2
<b>Girls youth 9v9 football</b>	10-11	1,130	11	4	1: 75	1,189	16	+1
<b>Mini-soccer 7v7 (mixed)</b>	8-9	2,243	39	8	1: 48	2,199	46	-1
<b>Mini-soccer 5v5 (mixed)</b>	6-7	2,172	21	8	1: 75	2,179	29	0

#### 5.10.7 Future '3G' pitch needs

Based upon the small net projected increase in team numbers of three by 2031, there will be an increase in demand equivalent to 0.08 '3G' football turf pitches.

### 5.10.8 Sport England's Playing Pitch Calculator

A supplementary way of modelling future playing pitch needs is Sport England's Playing Pitch Calculator. The model applies Team Generation Rates to the projected population increases to estimate the additional pitch needs arising and in addition generates capital and revenue cost estimates for providing the extra pitches. The model needs to be applied alongside an assessment of the various options for meeting unmet demand but provides helpful context for the site-specific supply-demand assessment and the TGR calculations above. The results of applying the Calculator for football needs arising from major planned developments in Harborough are set out below.

<i><b>Development</b></i>	<i><b>Number of dwellings</b></i>	<i><b>Population</b></i>	<i><b>Pitch type</b></i>	<i><b>Number of pitches</b></i>	<i><b>Capital costs (£)</b></i>	<i><b>Annual costs (£)</b></i>
East of Lutterworth Strategic Development Area	1,260	2,772	Adult	1.0	£103,930	
East of Lutterworth Strategic Development Area	1,260	2,772	Youth	1.81	£150,605	
East of Lutterworth Strategic Development Area	1,260	2,772	Mini	1.59	£41,428	
East of Lutterworth Strategic Development Area	1,260	2,772	'3G'	0.23	£239,794	
East of Lutterworth Strategic Development Area	1,260	2,772	Changing	4.58	£820,959	
East of Lutterworth Strategic Development Area	1,260	2,772	<b>TOTALS</b>	<b>-</b>	<b>£1,356,716</b>	<b>£70,787</b>
Overstone Park, Market Harborough	600	1,320	Adult	0.48	£49,489	
Overstone Park, Market Harborough	600	1,320	Youth	0.86	£71,720	
Overstone Park, Market Harborough	600	1,320	Mini	0.76	£19,729	
Overstone Park, Market Harborough	600	1,320	'3G'	0.11	£114,193	
Overstone Park, Market Harborough	600	1,320	Changing	2.18	£390,976	

Harborough District Council  
 Playing Pitch and Outdoor Sports Facilities Strategy

Overstone Park, Market Harborough	600	1,320	<b>TOTALS</b>	-	<b>£646,057</b>	<b>£33,709</b>
East of Blackberry Grange, Market Harborough	350	770	Adult	0.28	£28,868	
East of Blackberry Grange, Market Harborough	350	770	Youth	0.50	£41,835	
East of Blackberry Grange, Market Harborough	350	770	Mini	0.44	£11,506	
East of Blackberry Grange, Market Harborough	350	770	'3G'	0.06	£66,606	
East of Blackberry Grange, Market Harborough	350	770	Changing	1.27	£228,032	
East of Blackberry Grange, Market Harborough	350	770	<b>TOTALS</b>	-	<b>£376,847</b>	<b>£19,662</b>
Arnesby Road, Fleckney	130	286	Adult	0.10	£10,723	
Arnesby Road, Fleckney	130	286	Youth	0.19	£15,545	
Arnesby Road, Fleckney	130	286	Mini	0.16	£4,275	
Arnesby Road, Fleckney	130	286	'3G'	0.02	£24,726	
Arnesby Road, Fleckney	130	286	Changing	0.47	£84,733	
Arnesby Road, Fleckney	130	286	<b>TOTALS</b>	-	<b>£140,022</b>	<b>£7,305</b>
Burnmill Farm, Market Harborough	128	282	Adult	0.10	£10,577	
Burnmill Farm, Market Harborough	128	282	Youth	0.18	£15,317	
Burnmill Farm, Market Harborough	128	282	Mini	0.16	£4,218	
Burnmill Farm, Market Harborough	128	282	'3G'	0.02	£24,401	
Burnmill Farm, Market Harborough	128	282	Changing	0.42	£83,506	
Burnmill Farm, Market Harborough	128	282	<b>TOTALS</b>	-	<b>£138,018</b>	<b>£7,202</b>
Scraptoft North Strategic Development Area	1,200	2,640	Adult	0.95	£98,978	



Scraptoft North Strategic Development Area	1,200	2,640	Youth	1.72	£143,430	
Scraptoft North Strategic Development Area	1,200	2,640	Mini	1.52	£39,458	
Scraptoft North Strategic Development Area	1,200	2,640	'3G'	0.22	£228,378	
Scraptoft North Strategic Development Area	1,200	2,640	Changing	4.36	£781,878	
Scraptoft North Strategic Development Area	1,200	2,640	<b>TOTALS</b>	-	<b>£1,292,122</b>	<b>£67,416</b>
<b>OVERALL TOTAL</b>	<b>3,668</b>	<b>8,070</b>	-	-	<b>£3,949,782</b>	<b>£206,081</b>

## 5.11 Key findings and issues

### 5.11.1 What are the main characteristics of current supply and demand?

- **Local clubs:** There is a strong network of England Accredited football clubs in Harborough district, providing high quality coaching and playing opportunities.
- **Increased demand:** The number of FA-affiliated football teams in the district has increased from 178 in 2016/17 to 266 in 2021/22, a 49.4% increase. The growth is apparent in all age groups.
- **Unmet demand:** Consultation with local clubs indicated that a total of 37 additional teams of all age groups could be accommodated in Harborough district if the quality and quantity of pitch provision was improved, an increase of 11.5% from the number of existing teams.
- **Provision in neighbouring areas:** Assessments of football pitch provision in neighbouring areas mostly indicate deficiencies, particularly for '3G' football turf pitches. The absence of any available spare capacity in surrounding areas means that there is no scope for exporting football demand from Harborough district.
- **Grass pitch supply:** An examination of grass pitch supply suggests that in quantitative terms there is little if any local spare capacity.
- **Grass pitch quality:** 8.1% of pitches in the district are rated as 'poor' quality, with consequent reductions in carrying capacity. Several others suffer from poor drainage and so are rated at the lower end of 'standard' quality.
- **Changing facilities:** 28 pitches in the district (32.6%) are served by 'poor' quality or no changing facilities.

- **Unsecured access:** 16.3% of the pitches with community use and used are on sites without secured use, meaning that in theory community use could be rescinded at any time.
- **'3G' football turf pitches:** There are three full-sized '3G' pitches in Harborough district (plus a fourth pitch under construction at Lutterworth Athletic FC), but many local clubs have identified the lack of floodlit, all-weather pitches as an impediment to the development of the game locally. There is an accessibility deficiency in the northern part of the East sub-area.

5.11.2 Is there enough accessible and secured community use to meet current demand? **NO** - there is a significant deficit for most pitch types in the peak period

- **Adult grass pitches:** There is a collective peak deficit of 4.0 weekly match equivalent sessions at accessible, community-secured sites.
- **Youth 11v11 pitches:** There is a collective peak deficit of 16.0 weekly match equivalent sessions at the community-secured sites.
- **Youth 9v9 pitches:** There is a collective peak deficit of 6.0 weekly match equivalent session at community-secured sites.
- **Mini-soccer 7v7 pitches:** There is a collective peak deficit of 1.0 weekly match equivalent session at community-secured sites.
- **Mini-soccer 5v5 pitches:** There is collective spare capacity of 4.0 weekly match equivalent sessions at the community-secured sites.
- **'3G' football turf pitches:** Based on the FA's calculation of training needs, once the additional pitch at Lutterworth Soccer Academy is opened, there is just sufficient provision, but there is clear evidence of additional unmet demand. There is an accessibility deficiency in the northern part of the East sub-area.

5.11.3 Is the accessible provision of suitable quality and appropriately maintained? **MOSTLY** - 10.1% of pitches are 'poor' quality

**Quality:** 8.1% of pitches in the district are rated as 'poor' quality, with consequent reductions in carrying capacity. However, several others suffer from poor drainage and so are rated at the lower end of 'standard' quality.

5.11.4 What are the main characteristics of future supply and demand?

- **Population growth:** The ONS 2018 sub-national population projections forecast a population of 104,839 by 2031, an increase of 9,302 (or 9.7%). Comparison of the projections for 2020 and 2031 shows that the percentage of people aged under 50 falls from 55.6% to 53.2%, with proportionate population increases amongst the over 50s.

- **Changes in demand:** Projecting future need based on current demand patterns (including identified unmet demand) is a reasonable basis for forecasting.
- **Existing spare capacity:** There is a significant deficit in all pitch types.
- **Future needs:** Based on projected population growth, changes in demand for football pitches by 2031 will be equivalent to the following number of peak time match equivalent sessions:

<i>Pitch type</i>	<i>Change in pitch demand</i>
Adult	+6.0
Youth 11v11	-2.0
Youth 9v9	-2.0
Mini-soccer 7v7	-1.0
Mini-soccer 5v5	0
'3G' football turf	+0.08

5.11.5 Is there enough accessible and secured provision to meet future demand? **No**  
 - there is a deficit for all pitch types.

The situation at community accessible pitches in the district is summarised below:

- **Current secured pitches:** The number of pitches of each type with secured community access is listed in the second column.
- **Current secured peak spare pitch capacity:** The spare capacity at secured pitches is listed in the third column, with deficits indicated by a minus sign.
- **Current peak pitch demand:** The number of pitches currently required to meet peak demand is listed in the fourth column.
- **Extra peak pitch needs by 2031:** The number of extra pitches needed to meet projected demand by 2041 is listed in the fifth column.
- **Total peak pitch needs by 2031:** Total pitch needs in 2031 are listed in the sixth column, derived by adding the current and future assessed needs.

<i>Pitch type</i>	<i>Current secured pitches</i>	<i>Current secured peak spare pitch capacity</i>	<i>Current peak pitch demand</i>	<i>Extra peak pitch needs by 2031</i>	<i>Total peak pitch needs by 2031</i>
<b>Adult football</b>	24	-4.0	28.0	+6.0	34.0
<b>Youth 11v11</b>	8	-16.0	23.0	-2.0	21.0
<b>Youth 9v9</b>	10	-6.0	16.0	-2.0	14.0
<b>Mini 7v7</b>	17	-1.0	16.0	-1.0	15.0
<b>Mini 5v5</b>	15	+4.0	11.0	0	11.0

## 5.12 Scenario Testing

### 5.12.1 Introduction

Based upon the key findings and issues identified above, a number of scenarios have been examined, to identify the optimum approach to addressing needs.

### 5.12.2 Scenario 1: Accessing pitches on education sites

- **Rationale:** The following pitches on school sites have no community use at present:

<b>Site</b>	<b>Address</b>	<b>Adult 11v11 1</b>	<b>Youth 11v1 1</b>	<b>Youth 9v9</b>	<b>Mini 7v7</b>	<b>Mini 5v5</b>	<b>Sub- area</b>
Billesdon Primary School	Gaulby Road. Billesdon LE7 9AG	-	-	-	1	-	East
Church Langton Primary Academy	Stonton Road, Church Langton LE16 7SZ	-	-	-	1	-	East
Farndon Fields Primary School	Argyle Park, Market Harborough LE16 9JH	-	-	1	1	1	Middle
Fernvale Primary School	Somerby Road, Scraftoft LE7 9PR	-	2	-	-	-	East
Fleckney Primary School	Batchelor Road, Fleckney LE8 8BE	-	1	-	1	-	Middle
Foxton Primary School	Gallow Field Road, Foxton LE16 7QZ	-	-	-	1	-	Middle
Great Glen St. Cuthbert's Primary	The Chase, Great Glen LE8 9EQ	-	-	-	1	-	East
Husband's Bosworth Primary School	School Lane, Husband's Bosworth LE17 6JU	-	-	-	1	-	West
Kibworth Mead Academy	Smeeton Road, Kibworth Beauchamp LE8 0LG	-	2	-	-	-	East
Kibworth Primary School	Hillcrest Avenue, Kibworth Harcourt LE8 0NH	-	-	-	2	-	East

<b>Site</b>	<b>Address</b>	<b>Adult 11v11</b>	<b>Youth 11v11</b>	<b>Youth 9v9</b>	<b>Mini 7v7</b>	<b>Mini 5v5</b>	<b>Sub- area</b>
Lubenham All Saints Primary School	School Lane, Lubenham LE16 9TW	-	-	-	1	-	Middle
Lutterworth College	Bittesworth Road, Lutterworth LE17 4EX	2	1	-	1	-	West
Market Harborough Academy	Fairfield Road, Market Harborough LE16 9QH	-	-	-	1	-	Middle
Ridgeway Primary Academy	The Ridgeway, Market Harborough LE16 7HQ	-	-	-	1	-	Middle
Sherrier Primary School	Bitteswell Road, Lutterworth LE17 4EX	-	-	-	2	-	West
St. Andrew's Primary School	Dag Lane, North Kilworth LE17 6HD	-	-	-	1	-	West
St. Luke's Primary School	Main Street, Thurnby LE7 9PN	-	-	-	2	-	East
Welland Park Academy	Welland Park Road, Market Harborough LE16 9DR	-	-	1	-	-	Middle
<b>TOTALS</b>	-	<b>2</b>	<b>6</b>	<b>1</b>	<b>18</b>	<b>1</b>	<b>-</b>

- The table below models the effect of gaining access to school pitches to meet future community demand. It shows that whilst additional capacity would still need to be provided for youth 9v9 and mini 5v5, the amount of provision required would be reduced. Whilst pitch capacity is reduced by the education use, it would nevertheless make sense to consider investigating the potential for securing community use of these pitches to meet additional future demand, prior to making entirely new provision.

<b>Pitch type</b>	<b>Current School pitches</b>	<b>Peak match equivalent capacity</b>	<b>Unmet current peak demand (match equivalents)</b>	<b>Balance</b>
<b>Adult football</b>	2	2.0	-4.0	-2.0
<b>Youth 11v11</b>	6	6.0	-16.0	-10.0
<b>Youth 9v9</b>	1	1.0	-6.0	17
<b>Mini 7v7</b>	18	18.0	-1.0	+20.0
<b>Mini 5v5</b>	1	1.0	+4.0	+5.0

- Advantages:** The advantages of this scenario are as follows:
  - The pitches already exist and therefore could be brought into use at little or no additional cost, depending on the current quality of the respective pitches.

- There would be opportunities to establish closer school-club links if community-based clubs were playing on school sites.
  - The pitches should be available during the peak demand periods for community-based teams at weekends.
  - Seven of the schools are in the Middle sub-area, where the greatest shortfalls in peak time capacity are located.
- **Disadvantages:** The disadvantages of this scenario are as follows:
    - None of the schools has community use at present, so there is no guarantee that they would be prepared to commence such an arrangement.
    - No site has a Community Use Agreement so continued access would be unsecured.
    - No assessment has been made of the quality of schools pitches without community use, so the extent of their capacity to accommodate additional use is unknown.
  - **Conclusions:** This scenario offers some advantages for enhancing local pitch capacity on a cost-effective basis and should therefore be examined further on a site-by-site basis.

### 5.12.3 Scenario 2: Improve existing grass pitch carrying capacity

- **Rationale:** The following football pitches in Harborough district are either 'standard' or 'poor' quality and as such their carrying capacity is compromised:

<b>Site</b>	<b>Pitch rating</b>	<b>Adult 11v11</b>	<b>Youth 11v11</b>	<b>Youth 9v9</b>	<b>Mini 7v7</b>	<b>Mini 5v5</b>
Bowden's Park	Standard	1	-	1	-	-
Frolesworth Road Recreation Ground	Poor	2	-	-	-	-
Gilmorton Playing Field	Standard	-	-	-	1	2
Great Glen Recreation Ground	Poor	1	-	3	-	-
Lodge Road Recreation Ground	Standard	-	1	-	-	-
Lutterworth Football Academy	Standard	2	1	1	1	-
Lutterworth High School	Standard	-	2	2	1	1
Medbourne Sports and Social Club	Standard	1	-	1	1	-
North Kilworth Football Club	Poor	2	-	-	2	1
Robert Smyth Academy	Standard	1	1	-	-	-
South Kilworth Recreation Ground	Standard	1	-	-	-	-
Symington's Recreation Ground	Standard	2	-	1	1	1
Ullesthorpe Playing Field	Standard	-	-	1	1	2
<b>TOTALS</b>	<b>-</b>	<b>13</b>	<b>7</b>	<b>10</b>	<b>8</b>	<b>7</b>

- The table below models the effect of improving the pitches to ‘good’ quality and subsequently maintaining them as such.

<b><i>Pitch type</i></b>	<b><i>Improved pitch capacity (match equivalents)</i></b>	<b><i>Unmet current peak demand (match equivalents)</i></b>	<b><i>Balance (match equivalents)</i></b>
<b>Adult football</b>	18.0	-4.0	+14.0
<b>Youth 11v11</b>	16.0	-16.0	Balanced
<b>Youth 9v9</b>	21.0	-6.0	+15.0
<b>Mini 7v7</b>	14.0	-1.0	+13.0
<b>Mini 5v5</b>	16.0	+4.0	+20.0

- **Advantages:** The advantages of this scenario are as follows:
  - Overall usage capacity would be improved, the districtwide collective weekly capacity deficiencies would be eliminated and the distribution of the sites gives good geographical coverage across the whole district.
  - This would be a cost-effective option compared with the expense of providing new pitches, particularly if land acquisition costs are factored in.
- **Disadvantages:** The disadvantages of this scenario are as follows:
  - Whilst the capital cost of pitch improvements may be supported by the Football Foundation grants programmes, the main financial challenge to many pitch providers would be meeting the revenue cost implications of the enhanced works associated with maintaining the pitch quality as ‘good’.
  - The grounds maintenance specification at council-owned pitches is not consistent with maintaining the pitches to a high standard, so the only option for achieving this at council-owned pitches is through an asset transfer to user clubs.
  - The major benefit of capacity improvements are on weekly capacity and would have very limited impact on the peak period shortfalls, unless fixtures can be scheduled back-to-back, as is sometimes the case with youth football and mini-soccer games.
- **Conclusions:** Based upon the sub-area assessment, improving the pitches at Bowden’s Park, Lutterworth Football Academy, North Kilworth FC and Symington’s Recreation Ground would have the greatest impact on current deficiencies.

### 5.12.3 Scenario 3: Provide additional ‘3G’ football turf pitch capacity

- **Rationale:** There are three full-sized ‘3G’ pitches in Harborough district (plus a fourth pitch under construction at Lutterworth Athletic FC), but many local clubs have identified the lack of floodlit, all-weather pitches as an impediment to the



development of the game locally. There is an accessibility deficiency in the northern part of the East sub-area. There are several current proposals that could provide additional capacity:

- Welland Park Academy in Market Harborough is proposing to resurface its sand-based pitch with a GEN2 surface suitable for hockey and football.
  - Lutterworth High School has aspirations to provide a small-sided ‘3G’ football turf pitch on its playing field.
  - Kibworth Town FC has aspirations to provide a ‘3G’ football turf pitch at Bird’s Barn, Kibworth.
  - Market Harborough Rugby Club would like to provide a rugby-compliant ‘3G’ pitch at its site, which would also provide some capacity for football use.
- **Advantages and disadvantages:** The table below sets out the respective merits of each prospective facility.

<b>Facility</b>	<b>Advantages</b>	<b>Disadvantages</b>
<b>Welland Park Academy</b>	<p><b>Advantages</b></p> <ul style="list-style-type: none"> <li>• Resurfacing is the most cost-effective way of providing additional capacity.</li> <li>• The proposed GEN2 surface is suitable for football and hockey.</li> <li>• Location on a school site would maximise daytime usage.</li> </ul>	<p><b>Disadvantages</b></p> <ul style="list-style-type: none"> <li>• Hockey requires additional use of the existing pitch, so if football use was expanded it would compound the deficiency.</li> <li>• The location is not identified as a priority in the Harborough Local Football Facility Plan.</li> <li>• There are already two ‘3G’ football turf pitches in Market Harborough.</li> </ul>
<b>Lutterworth High School</b>	<p><b>Advantages</b></p> <ul style="list-style-type: none"> <li>• Lutterworth Town FC is already based at the site.</li> <li>• Location on a school site would maximise daytime usage.</li> </ul>	<p><b>Disadvantages</b></p> <ul style="list-style-type: none"> <li>• The location is not identified as a priority in the Harborough Local Football Facility Plan.</li> <li>• There is already one ‘3G’ football pitch in Lutterworth (under construction).</li> </ul>
<b>Kibworth Town FC</b>	<p><b>Advantages</b></p> <ul style="list-style-type: none"> <li>• The accessibility deficiency in the East sub-area would be addressed.</li> <li>• The location is identified as a priority in the Harborough Local Football Facility Plan.</li> </ul>	<p><b>Disadvantages</b></p> <ul style="list-style-type: none"> <li>• The site is in a rural setting so it is planning consent for floodlighting may be problematic.</li> <li>• The on-site changing facilities are poor quality, so would need to be upgraded.</li> </ul>
<b>Market Harborough RFC</b>	<p><b>Advantages</b></p>	<p><b>Disadvantages</b></p>



	<ul style="list-style-type: none"> <li>• The pitch would meet a combination of football and rugby needs.</li> <li>• As a multi-sport facility, the pitch would meet the Football Foundation’s new emphasis on such projects.</li> </ul>	<ul style="list-style-type: none"> <li>• The pitch is a longer-term proposal after floodlighting improvements of the existing grass pitches is implemented.</li> <li>• Rugby usage would compromise the amount of capacity for football.</li> <li>• The location is not identified as a priority in the Harborough Local Football Facility Plan.</li> <li>• There are already two ‘3G’ football turf pitches in Market Harborough.</li> </ul>
--	---	---

- **Conclusions:** Based upon the balance of advantages and disadvantages, the prospective projects should be prioritised as follows:

- **Priority 1 - Kibworth Town FC:** Subject to its permissibility in planning terms, the project would meet an accessibility deficiency, giving the district comprehensive geographical coverage.
- **Priority 2 - Welland Park Academy:** Subject to confirmation from England Hockey and Market Harborough Hockey Club that they are supportive of a GEN2 surface and contingent upon guaranteed usage levels for hockey, this project would meet capacity needs for both football and hockey.
- **Priority 3 - Market Harborough RFC:** This project is a longer-term priority for rugby in its own right but would also supplement local football needs.
- **Priority 4 - Lutterworth High School:** Subject to the completion of the new ‘3G’ pitch at Lutterworth Athletic FC, all immediate needs in Lutterworth should be met.

## 5.13 Policy recommendations

### 5.13.1 Introduction

The Harborough district PPS is a robust and evidence-based assessment of the current and future needs for football in the district. The recommendations in relation to football are made in the context of the National Planning Policy Framework (NPPF), which stipulates that existing open space including playing pitches, should not be built upon unless:

- An assessment has taken place which has clearly shown the open space to be surplus to requirements, or;

- The loss resulting from the proposed development would be replaced by equivalent or better provision in terms of quantity and quality, in a suitable location, or;
- The development is for alternative sport and recreation provision, the needs for which clearly outweighs the loss.

The following recommendations are arranged under the three main headings of 'protect', 'enhance' and 'provide'.

### 5.13.2 Protect

**Recommendation 1 - Safeguarding existing provision:** The Strategy identifies a need for all current and disused football pitch sites to be retained, on the basis of the specific identified roles that each can play in delivering the needs of the sport and/or other wider open space functions in Harborough district both now and in the future. It is therefore recommended that existing planning policies continue to support the retention and protection of all sites, based upon the evidence in the PPS. If any pitch sites do become the subject of development proposals, this will only be permissible if they are replaced and meet policy exception E4 of Sport England's Playing Fields Policy. This states that 'the playing field or playing fields which would be lost as a result of the proposed development must be replaced by a playing field or playing fields of an equivalent or better quality and of equivalent or greater quantity, in a suitable location and subject to equivalent or better management arrangements, prior to the commencement of development'.

**Recommendation 2 - Security of tenure:** Just over 10% of the football pitches in the district are on sites without secured community use. The absence of Community Use Agreements makes it impossible to assume the continued availability of the pitches for the community. It is therefore recommended that efforts are made to achieve security of Community Use Agreements at sites without them at present.

### 5.13.2 Enhance

**Recommendation 3 - Improving existing 'poor' quality provision, including disused sites:** Eight pitches (8.7%) in the district are rated as 'poor' quality and several more are rated at the lower end of 'standard' quality. Additionally, 34.8% of pitches are served by 'poor' quality or no changing facilities. This reduces the quality of playing experience and may deter some potential participants. Based upon the sub-area assessment, improving the pitches at Bowden's Park, Lutterworth Football Academy, North Kilworth FC and Symington's Recreation Ground would have the greatest impact on current deficiencies. Subject to security of tenure issues, it is recommended that:

- The site owners concerned should subscribe to the Football Foundation's Pitch Power programme, a low-cost service that provides a pitch quality assessment and recommendations on how to improve maintenance to enhance capacity.
- The site owners concerned should be supported to apply for external funding for facility enhancements, including the receipt of developer contributions (see

below) where the usage capacity would be enhanced, where this would address deficits in the peak period.

**Recommendation 4 - Developer contributions and external funding (enhancements):** Some of the additional demand for football arising from the proposed housing development in Harborough district to 2031, should be accommodated through enhancements to existing pitches and facilities. Improving the pitches at Bowden's Park, Lutterworth Football Academy, North Kilworth FC and Symington's Recreation Ground would have the greatest impact on current deficiencies. It is recommended that the site-specific action plan in the Harborough PPS be used as the basis for determining facility enhancements that demonstrably relate to the scale and location of specific developments and that an appropriate level of financial contributions be sought under S106 arrangements, on-site provision in larger developments and/or through applications for external funding to cover the capital and revenue implications of the enhancements.

#### 5.13.4 Provide

**Recommendation 5 - '3G' football turf pitches:** If unmet demand for football teams is included, based upon the FA's guide figure, there is a shortfall of '3G' football turf pitches in the district. '3G' pitches are an important component of provision because their all-weather nature and floodlights enable a high volume of play to be accommodated on good quality playing surfaces. The provision of an additional '3G' pitch to meet needs identified in the Harborough PPS should be supported as a priority in an appropriate location.

**Recommendation 6 - Developer contributions and external funding (new provision):** Some of the extra demand for football in particular arising from the proposed housing development in Harborough district to 2031, may need to be accommodated through the provision of new pitches and facilities, once options for improving capacity at existing sites have been explored. It is recommended that an appropriate level of financial contributions be sought under S106 arrangements, on-site provision in larger developments and/or through applications for external funding to cover the capital and revenue implications of the new provision.

### 5.14 Action Plan

#### 5.14.1 Introduction

In the context of the high-level recommendations above, the tables below set out the football site-specific action plan to guide the implementation of the strategy. The abbreviations stand for HDC - Harborough District Council and PP - Pitch Power (the Football Foundation's pitch improvement tool). The capital cost estimates are based upon Sport England's '*Facility Costs - Second Quarter of 2021*' (2021), but actual costs will vary based on site-specific conditions.

### 5.14.2 Key strategic actions

<b>Issues</b>	<b>Action</b>	<b>Lead</b>	<b>Partners</b>	<b>Resources</b>	<b>Priority</b>
<b>Community access to pitches</b>	Pursue formal Community Use agreements at all existing and any future proposed pitches on education sites.	HDC	Academies and schools	Possible funding for improvements to physical accessibility.	High
<b>Securing developer contributions</b>	Ensure that policy provision is made to secure developer contributions towards new and improved football facilities.	HDC	Developers	Determined by Sport England's Playing Pitch Calculator	High
<b>Identify site for a '3G' football turf pitch</b>	Examine the feasibility of providing a '3G' pitch at an appropriate site.	Potential host site	FF S106 funding	£10,000 for feasibility study £960,000 for pitch	High
<b>Co-operation with the RFU and England Hockey</b>	Dialogue between the respective governing bodies on coordinating shared artificial grass pitch needs	FA	RFU England Hockey	-	High
<b>Site specific grounds maintenance needs</b>	Review site specific grounds maintenance needs through the FA Pitch Improvement Programme.	FA	PP	£100 per site annually.	High

### 5.13.3 Site specific actions

<b>Site</b>	<b>Issues</b>	<b>Action</b>	<b>Lead</b>	<b>Partners</b>	<b>Resources</b>	<b>Priority</b>
<b>Aylestone St. James RFC</b>	No current issues.	No action required.	-	-	-	-
<b>Bird's Barn</b>	<ul style="list-style-type: none"> <li>Youth 9v9 pitches used to over-capacity at peak times.</li> <li>'Poor' quality changing facilities.</li> </ul>	<ul style="list-style-type: none"> <li>Secure additional pitches on land adjacent to the site.</li> <li>Provide a new pavilion.</li> </ul>	Kibworth Town FC	FF	£185,000 for pitches £690,000 for pavilion	High
<b>Bowden's Park</b>	<ul style="list-style-type: none"> <li>Youth 11v11, youth 9v9 and mini 7v7 pitches used to over-capacity at peak times.</li> <li>Harborough Town FC wishes to extend changing facilities.</li> </ul>	<ul style="list-style-type: none"> <li>Investigate the feasibility of providing floodlit, hybrid pitch.</li> <li>Improve changing facilities.</li> </ul>	Harborough Town FC	HDC FF	£250,000 for the floodlit pitch £200,000 for changing	High

Harborough District Council  
 Playing Pitch and Outdoor Sports Facilities Strategy

<b>Dunley Way Playing Field</b>	No current issues.	No action required.	-	-	-	-
<b>Dunton &amp; Broughton Rangers FC</b>	No current issues.	No action required.	-	-	-	-
<b>Fleckney Sports and Leisure Centre</b>	No current issues.	No action required.	-	-	-	-
<b>Frolesworth Road Recreation Ground</b>	<ul style="list-style-type: none"> <li>• 'Poor' quality pitches.</li> <li>• 'Poor' quality changing facilities.</li> </ul>	<ul style="list-style-type: none"> <li>• Assess pitch using Pitch Power.</li> <li>• Implement improved maintenance.</li> </ul>	Broughton Astley PC	PP	TBC	Medium

<b>Site</b>	<b>Issues</b>	<b>Action</b>	<b>Lead</b>	<b>Partners</b>	<b>Resources</b>	<b>Priority</b>
<b>Gilmorton Playing Field</b>	Adult pitch used to over capacity at peak times.	<ul style="list-style-type: none"> <li>Assess pitch using Pitch Power.</li> <li>Implement improved maintenance.</li> </ul>	Gilmorton PC	PP	TBC	Medium
<b>Great Glen Recreation Ground</b>	<ul style="list-style-type: none"> <li>Adult pitch used to over capacity at peak times.</li> <li>'Poor' quality mini 7v7 pitches.</li> </ul>	<ul style="list-style-type: none"> <li>Assess pitch using Pitch Power.</li> <li>Implement improved maintenance.</li> </ul>	Great Glen PC	PP	TBC	Medium
<b>Houghton Field</b>	'Poor' quality changing.	Improve changing facilities.	Houghton-on-the-Hill PC	-	£100,000	Medium
<b>Husband's Bosworth Playing Field</b>	No current issues.	No action required.	-	-	-	-
<b>Lodge Road Recreation Ground</b>	'Poor' quality changing.	Review the need for on-site changing.	Fleckney PC	Fleckney Athletic FC	-	Low
<b>Lutterworth Football Academy</b>	Adult, youth 11v11 and 9v9 pitches used to over capacity at peak times.	The '3G' pitch proposed for the site will meet all pitch capacity needs.	Lutterworth Athletic FC	FF	Funding already secured	High
<b>Lutterworth High School</b>	<ul style="list-style-type: none"> <li>Youth 11v11 and youth 9v9 pitches used to over-capacity at peak times.</li> <li>Unsecured community access</li> </ul>	<ul style="list-style-type: none"> <li>Assess pitch using Pitch Power.</li> <li>Implement improved maintenance.</li> <li>Negotiate Community Use Agreement</li> </ul>	Lutterworth HS	HDC PP	TBC	Medium
<b>Medbourne Sports and Social Club</b>	No current issues.	No action required.	-	-	-	-
<b>North Kilworth Football Club</b>	'Poor' quality mini 7v7 and 5v5 pitches.	<ul style="list-style-type: none"> <li>Assess pitches using Pitch Power.</li> <li>Implement improved maintenance.</li> </ul>	North Kilworth FC	PP	TBC	Medium
<b>Robert Smyth Academy</b>	<ul style="list-style-type: none"> <li>Youth 11v11 pitch used to over-capacity at peak times.</li> <li>Unsecured community access</li> </ul>	<ul style="list-style-type: none"> <li>Assess pitch using Pitch Power.</li> <li>Implement improved maintenance.</li> </ul>	Robert Smyth Academy	HDC PP	TBC	Medium

Harborough District Council  
Playing Pitch and Outdoor Sports Facilities Strategy

		<ul style="list-style-type: none"> <li>• Negotiate Community Use Agreement</li> </ul>				
<b>South Kilworth Recreation Ground</b>	Youth 11v11 pitch used to over-capacity at peak times.	<ul style="list-style-type: none"> <li>• Assess pitch using Pitch Power.</li> <li>• Implement improved maintenance.</li> </ul>	South Kilworth PC	PP	TBC	Medium
<b>Symington's Recreation Ground</b>	<ul style="list-style-type: none"> <li>• Youth 9v9, mini 7v7 and 5v5 pitches all used to over capacity at peak times.</li> <li>• 'Poor' quality changing facilities.</li> </ul>	<ul style="list-style-type: none"> <li>• Assess pitches using Pitch Power.</li> <li>• Implement improved maintenance.</li> <li>• Improve changing facilities.</li> </ul>	Borough Alliance FC	HDC PP	TBC £100,000 for changing .	High

<b>Site</b>	<b>Issues</b>	<b>Action</b>	<b>Lead</b>	<b>Partners</b>	<b>Resources</b>	<b>Priority</b>
<b>Thomas Estley Community College</b>	No current issues.	No action required.	-	-	-	-
<b>Ullesthorpe Playing Fields Association</b>	Mini 7v7 pitch used to over capacity at peak times.	<ul style="list-style-type: none"> <li>• Assess pitch using Pitch Power.</li> <li>• Implement improved maintenance</li> </ul>	Ullesthorpe Playing Fields Association	PP	TBC	Medium

