

Harborough District Council

**Ecological Assessment of
Proposed Site Allocations:
Phase 1 Desk Study**
**Harborough District Local
Plan Update Regulation 19**

Issue 02
Prepared by LUC
April 2026



Harborough District Council

**Ecological Assessment of Proposed Site
Allocations: Phase 1 Desk Study
Harborough District Local Plan Update Regulation
19**

Project Number
13084

Version	Status	Prepared	Checked	Approved	Date
1.	Draft Report	R. West R. Martinez H. Mukeshkumar	N. Machin	N. Machin	06.11.2024
2.	Final Report for Issue	R. West H. Mukeshkumar	S. Swindlehurst	S. Swindlehurst	09.12.2024
3.	Final Report Issue 02 with additional 14 sites	R. West H. Mukeshkumar	S. Swindlehurst	S. Swindlehurst	27.02.2025
4.	Final Report incorporating final client comments	R. West	S. Swindlehurst	S. Swindlehurst	30.05.25
5.	Issue 02	C. Collins	S. Swindlehurst	R. West	03.04.26

Bristol
Cardiff
Edinburgh
Glasgow
London
Manchester
Sheffield

landuse.co.uk

Land Use Consultants Ltd
Registered in England
Registered number 2549296
Registered office:
250 Waterloo Road
London SE1 8RD

100% recycled paper

Landscape Design
Strategic Planning & Assessment
Development Planning
Urban Design & Masterplanning
Environmental Impact Assessment
Landscape Planning & Assessment
Landscape Management
Ecology
Historic Environment
GIS & Visualisation
Transport & Movement Planning
Arboriculture



OHS627041



Contents

Executive Summary	ii		
<hr/>			
Chapter 1		Appendix A	
Introduction	1	Leicestershire Biodiversity Action Plan	
		Priorities	A-1
Project Description	1	Habitats of National Importance	A-1
Context of the Harborough District Local Plan	1	Habitats of Local Importance	A-1
Area Description	2	Species	A-1
National Legislation and Policies	2	<hr/>	
Leicestershire Policies and Strategies	3	Appendix B	
Harborough District Local Plan	5	Results Table	B-1
Associated Projects	5	<hr/>	
<hr/>			
Chapter 2		Appendix C	
Methodology	6	Maps of Sites Categorised by	
		Sensitivity	C-1
Identification of Assessment Parameters	6	<hr/>	
GIS Analysis	10		
Matrix Analysis	10		
Assessment Method	10		
Rating and Ranking	10		
Limitations	13		
<hr/>			
Chapter 3			
Results	14		
High Sensitivity Sites	14		
Moderate to High Sensitivity Sites	23		
Moderate Sensitivity Sites	25		
Low to Moderate Sensitivity Sites	37		
Low Sensitivity Sites	41		
Ecosystem Services	41		
<hr/>			
Chapter 4			
Discussion	45		
Site Sensitivity	45		
Ecosystem Services	46		
Further Surveys	46		

Executive Summary

LUC was commissioned by Harborough District Council in September 2024 to deliver a desk based assessment of proposed site allocations in the Draft Local Plan to support Regulation 19 consultation, planned for March 2025. This assessment constitutes Phase 1 of the project. This report also includes an assessment of an additional 14 sites in February 2025.

Phase 2 will include ecological survey of the shortlisted sites as well as an assessment of the recently published Draft Local Nature Recovery Strategy (LNRS) for Leicester, Leicestershire and Rutland, recommendations as to how the Council can “take account” of the LNRS within its updated draft Local Plan and how this might impact site selection and proposals.

The Phase 1 assessment included a spatial analysis of 140 sites, according to their overlap with selected parameters such as designated sites, priority habitat, protected species and strategic plans. A score was attributed for the sites according to the proximity of parameters. These parameters were categorised into:

- Key receptors – receptors with statutory footing,
- BNG suitability – an assessment of the presence of irreplaceable and priority habitats on site,
- Strategic Significance – alignment with Leicestershire's statement of strategic significance in lieu of a final LNRS,
- Ecological Enhancements and Opportunities – strategic plans and assessments.

The sites were attributed sensitivity ratings according to the score they received for the parameters within each category and pre-assigned thresholds for those categories. The thresholds have been assigned based on local context and to support the prioritisation of the 140 sites. Harborough is a district with a relative paucity of nationally designated sites (less than 2% of the area) as is described in the draft Local Plan. As a result, the Local Wildlife Site (LWS) network is all the more important as it supports the best examples of semi-natural habitat and priority and protected species in the district. As a result, ecological sensitivity as assigned in this assessment should be viewed through the lens of local context and not compared directly with other areas or sites with more highly sensitive receptors.

42 sites were considered to be of High sensitivity predominantly due to the presence of locally designated sites and priority habitats on site. It is recommended that further surveys are conducted on these sites to inform the Local Plan process and support early identification of potential ecological receptors on site. It is considered that BNG requirements are likely to be challenging to achieve on-site.

Eight sites were identified as Moderate to High sensitivity. The scoring for these sites predominantly driven by similar factors as the sites of High sensitivity, but to a lesser degree. Alignment with Wildlife Corridors and areas deemed more susceptible to climate change were also driving factors. As with the sites of High sensitivity, further surveys are recommended as above. BNG requirements could be challenging to fulfil on-site.

63 sites were identified as being of Moderate sensitivity and could be locally important ecologically. These sites supported, or were in close proximity to, numerous minor receptors or a very small amount of important features and it is considered that BNG requirements are likely to be achievable on-site with early and careful planning. As data gathering to inform the evidence based is targeted on High and Moderate to High sites, further surveys are not recommended on these sites at this stage. Detailed surveys will be required in due course as part of the development planning system to inform the masterplanning and design of any proposal coming forward, and to ensure that ecological receptors are retained (or any unavoidable impacts fully mitigated) and appropriate gains delivered.

26 sites were assessed as being of Low to Moderate sensitivity. Though most of these sites have few or no ecological receptors on site, these are generally present in close proximity. Ecological surveys will be required for planning applications submitted for these sites. BNG requirements should be achievable on-site with relatively few issues (depending on the final scale of development proposed).

One site was identified as being of Low Sensitivity. This category reflects sites that have scope for some ecological opportunities but are expected to support no or very few minor ecological receptors, and there are few in close proximity to the site. Similar to sites with a Low to Moderate sensitivity, ecological surveys will be required for planning applications submitted for these sites and BNG requirements should be achievable on-site with relatively few issues.

As a result of the above, 16 sites are recommended for further surveys, those of High and Moderate to High sensitivity identified by the Council as sites being brought forward for further consideration in the Local Plan.

Consideration was given to three additional parameters, inextricably linked to biodiversity and the provision of ecosystem services. Some sites that are considered to be highly susceptible to climate change risks have been identified from national spatial data. It is recommended that proposals for these sites consider how to ameliorate these risks with nature based solutions at an early stage of masterplanning, should these be taken forward for development. Some sites within flood risk zones 1 & 2 have been identified and associated plans should consider implementing nature based solutions as part of flood risk reduction. Some sites in areas not satisfying Accessible Natural Greenspace Standards have been identified and consideration for provision should be included in proposals associated with these sites.

Chapter 1

Introduction

Project Description

1.1 LUC was commissioned in September 2024 to undertake an initial desk based ecological assessment of proposed residential and business site allocations from Harborough District Council's' new draft Local Plan following the Regulation 18 Issues and Options Consultation, which ran earlier in the year (16th January to 27th February 2024). In February 2025 Harborough District Council commissioned LUC to undertake an assessment of a further 14 sites (140 total) and update this report to include those findings. This constitutes Phase 1 of the project.

1.2 This assessment will inform the revision of sites made prior to its publication for the Regulation 19 consultation (proposed February 2025). It has been undertaken with regard to national, county and district policy and legislation. Sites, whether residential or business allocations, have been treated the same in this assessment due to the uncertainty of proposals and the emphasis on the sensitivity of sites. The assessment considers the ecological receptors on and in close proximity to sites, rather than the impact of specific proposals.

1.3 This report makes recommendations as to which sites require further ecological surveys and the scope of those surveys.

1.4 Phase 2 of the project will include ecological surveys of selected sites and consideration of the Draft Local Nature Recovery Strategy (LNRS) for Leicester, Leicestershire and Rutland. The second phase will take place in Spring 2025, likely after the Regulation 19 Consultation has been completed due to the necessity to consider appropriate timing of ecological surveys.

Context of the Harborough District Local Plan

1.5 The new Local Plan will set the planning framework for Harborough District over the next 15 years and will set out policies and proposals to address housing need and other economic, social and environmental issues. Once adopted, the new Local Plan will replace the current Harborough Local Plan 2011-2031.

1.6 In preparing the Local Plan, the Local Planning Authority includes a spatial strategy to fulfil housing requirements. The

process includes identification of proposed allocation sites which are brought forward in the process. These are subject to evidence-based appraisals, assessing their suitability and the likely impact of development on various assets, including those relevant to biodiversity.

1.7 Having undertaken Regulation 18 consultation on a Draft Local Plan including proposed allocated sites earlier this year, Harborough District Council now requires more detailed assessment of these sites, and additional sites brought forward through the Regulation 18 consultation, to deepen their understanding of their suitability. This will inform the next stage of Regulation 19 consultation.

Area Description

1.8 Harborough District is the largest of the nine Leicestershire authorities within the East Midlands region. It covers an area of 591.8km² and is a relatively rural district within southern Leicestershire. It is characterised by extensive tracts of countryside interspersed with rural villages. Harborough contains a variety of landscapes including woodland, steep valleys and rolling hills.

1.9 The main population centres include the market towns of Market Harborough, lying on the southern boundary of the district; Lutterworth, situated to the west, which is closely related to Rugby Borough; and Broughton Astley, close to the border with Blaby District. Other large and medium villages including Great Glen, Kibworth (Beauchamp and Harcourt), Fleckney, Billesdon, Great Bowden, Ullesthorpe, Houghton on the Hill and Husbands Bosworth serve as rural centres for the numerous small villages and smaller settlements spread throughout the remainder of the district.

1.10 The Leicestershire and Rutland Biodiversity Action Plan (BAP) 2016-2026 identified that 84% of Leicestershire and Rutland is farmland, of which 82% is good to moderate quality farmland, suitable for producing cash crops such as cereal and oil seed rape.

1.11 Leicestershire and Rutland are amongst the poorest counties in the UK for sites of recognised nature conservation value. The very best sites (nationally designated Sites of Special Scientific Interest, SSSI) represent only about 2% of the land area (ca. 1.3% for Leicestershire). Natural England's 2019 assessment of the 76 SSSIs in Leicestershire showed that:

- 52.38% were in Unfavourable recovering condition,
- 7.27% were in Unfavourable condition – no change,
- 6.69% were in Unfavourable condition – declining,

1.12 County designated Local Wildlife Sites (LWS) are defined areas, identified and selected for their nature conservation value based on important, distinctive and threatened habitats and species within a nation or region. Within Leicester, Leicestershire and Rutland there were 1,167 notified sites, 1,108 candidate sites and 1,013 potential sites, covering in total 12,350 hectares, or c.4.8% of the area.

1.13 Across Leicestershire and Rutland there are a total of 33 Leicestershire & Rutland Wildlife Trust (LRWT) Reserves, that cover nearly 3,000 acres (1,214 hectares), 20 of which host SSSI designations.

National Legislation and Policies

1.14 The National Planning Policy Framework (NPPF) was originally published in March 2012 and has been revised several times since, with the most recent publication being February 2025. The NPPF sets out the approach Local Plans should take in relation to biodiversity and states that Plans should “*identify, map and safeguard components of local wildlife-rich habitats and wider ecological networks, including the hierarchy of international, national and locally designated sites of importance for biodiversity; Wildlife Corridors and stepping stones that connect them; and areas identified by national and local partnerships for habitat management, enhancement, restoration or creation*”. Plans should also promote conservation, restoration and enhancement of priority habitats and species, ecological networks and support measurable targets for multi-functional areas and net gains for biodiversity. A strategic approach to maintaining and enhancing networks of habitats and green infrastructure is to be supported through planning policies. This identifying and mapping includes the declaration of LWS as sites locally important for nature and protected within the planning system.

1.15 The **Environment Act 2021** brought forward LNRS as an instrument for Local Planning Authorities to deliver spatial priorities for nature in their areas. These strategies will constitute a spatial plan and a statement of priorities. The **Levelling-up and Regeneration Act 2023** requires public bodies to “take account” of the LNRS, though interpretation of this requirements is as yet unspecified. The relevant LNRS for Harborough is the Leicester, Leicestershire and Rutland LNRS, for which Harborough District Council is a supporting authority. Publication of the final strategy is anticipated in the latter half of 2025, though the consultation draft was published November 2024.

1.16 The **Environment Act 2021** (Schedule 141F¹) also made new provisions to the Town and Country Planning Act 1990 (Schedule 7A) by making planning permission in England subject to a biodiversity net gain objective (commonly

¹ [Environment Act 2021 \(legislation.gov.uk\)](https://www.legislation.gov.uk)

referred to as BNG). All permissions granted, unless exempt², are subject to the biodiversity gain condition to provide a gain plan detailing at least 10% gain for biodiversity. The guidance makes clear that on-site habitat creation and enhancement is preferential to off-site. Applications must make clear that considerations have been made to include on-site “units” in the first instance.

1.17 The Environment Act 2021 places further duties on public bodies. Section 102 amends Section 40 of the **Natural Environment and Rural Communities Act 2006**, requiring public authorities to conserve and enhance biodiversity. A public authority must consider what actions can be taken to further the biodiversity objective. As a result, in preparation of policy an LPA should not only consider how to provide suitable protection for biodiversity as per other legislative and policy requirements, but also actively seek benefits for nature.

1.18 The Conservation of Habitats and Species Regulations 2017 (SI 2017/1012), as amended by The Conservation of Habitats and Species (Amendment) (EU Exit) Regulations 2019 (SI 2019/579) transpose the requirements of the European Habitats Directive (Council Directive 92/43/EEC) and Birds Directive (Council Directive 79/409/EEC) into UK law, enabling the designation of protected sites and species at a European level.

1.19 The Wildlife and Countryside Act 1981 (as amended) forms the key piece of UK legislation relating to the protection of habitats and species.

1.20 Species and Habitats of Principal Importance for Conservation in England and Wales and priority habitats and species listed on the local Biodiversity Action Plans (BAP) are species/habitats which are targeted for conservation. The government has a duty to ensure that involved parties take reasonable practice steps to further the conservation of such species/habitats under Section 41 of the Natural Environment and Rural Communities Act 2006. In addition, the Act places a biodiversity duty on public authorities who *‘must, in exercising their functions, have regard, so far as is consistent with the proper exercise of those functions, to the purpose of conserving biodiversity’* (Section 40 [1]). Criteria for selection of national priority habitats and species in the UK include international threats and marked national decline.

1.21 National Parks and Access to the Countryside Act 1949 creates the statutory designation of Local Nature Reserves (LNR) and National Nature Reserves (NNR) to protect sites of value to nature and people. Though a national designation, LNRs are selected, declared and managed by local authorities. NNRs are selected by Natural England as

sites supporting the best examples of habitats or those offering the potential for research or education.

Policy Uncertainty

1.22 It should be noted that the policy context is inherently uncertain as the current framework is anticipated to change in response to a number of key factors:

- **New Government** – the Labour Government elected in July 2024 is proposing changes to existing planning policy. The Government will soon consult on a new version of the NPPF, which will focus on growth, including the restoration of mandatory housing targets.
- **Levelling-up and Regeneration Act 2023** – the deadline for submitting a Local Plan under the current system is 30 June 2025. Much of the new system set out by the 2023 Act will not come into force until secondary legislation is passed. The planning reforms include:
 - the requirement of a new 'Environmental Outcomes Report',
 - replacement of the CIL process and much of the section 106 payments system with a new National Infrastructure Levy,
 - a shared framework of National Development Management Policies, removing much of this detail from Local Plans,
 - replacement of Supplementary Planning Documents with Supplementary Plans that carry more weight but would be subject to Examination,
 - repeal of the Duty to Cooperate,
 - a duty on public bodies and infrastructure providers to assist the local plan-making process,
 - a speeded-up plan-making process (plans to be prepared and adopted within 30 months),
 - a strengthened role for the 'National Model Design Code',
 - replacement of Neighbourhood Plans with Neighbourhood Priorities Statements.

Leicestershire Policies and Strategies

1.23 Leicestershire’s Biodiversity Action Plan **Space for Wildlife 2016 – 2026**³ identifies species (identified in **Appendix A**) and habitat priorities for the county and lists habitats of national importance, and outlines actions needed to restore nature in the county. The priority habitats and

² Biodiversity net gain: exempt developments - GOV.UK (www.gov.uk)

³ Leicestershire County Council (2016) *2nd edition*. Space for Wildlife 2016 – 2026.

species are significant in aiding the identification of receptors and refining analyses. Also identified are Living Landscapes; areas of particular significance for nature within the county. The document was produced in collaboration between the County Council, Leicestershire and Rutland Environmental Records Centre (LRERC) and the Leicestershire and Rutland Wildlife Trust (LRWT).

1.24 Leicestershire County Council Environment Strategy 2018-2030⁴ sets out the Council's Environment Policy, the scope of which includes the legal and statutory duties it must fulfil regarding the environment in response to declaring a climate emergency.

1.25 Leicestershire County Council's Country Parks and Open Spaces Strategy 2019-2029⁵ recognises ecology and the environment as integral to the function of the parks and open spaces. It intends to '*Ensure that the biodiversity, heritage and landscape values of all sites are conserved and developed*' and provides commitment to creating and enhancing habitats and species richness within those habitats. The Strategy also recognises that the Council's parks and open spaces contribute to wildlife havens, corridors and stepping stones.

1.26 Leicestershire County Council's Tree Management Strategy 2019-2025⁶ recognises the importance of trees particularly veteran trees as a habitat for many species such as fungi, lichens, birds, bats and insects. The Strategy makes a commitment to managing and conserving these trees in the landscape wherever possible. In addition, the Strategy calls for an increase in tree planting to improve woodland cover in Leicestershire, as the area is below average at 6% (2020) compared with the national average of 13%.

1.27 The Biodiversity Quality Assessment Report 2022⁷ details an assessment of 1km squares across the county for habitat diversity and other indicators of habitat quality. Each square was attributed a score of 1-6 (with 1 being poor and 6 being high).

1.28 The Analysis of Accessible Natural Greenspace for Leicestershire and Rutland report delivers an analysis of natural greenspace within the county and the fulfilment of greenspace standards. These standards were created to encourage local authorities to plan for the provision of natural greenspace due to its provision of social ecosystem services.

Areas are identified that comply with these standards, and consequently areas that fail to do so.

1.29 Applying the Biodiversity Net-gain Metric⁸ is interim guidance for assessing strategic significance in Leicestershire and Rutland. Prior to the publication of the LNRS, professionals using the Statutory Metric are able to apply multipliers for Strategic Significance. This guidance provides clarity over what is considered as fulfilling these criteria in this instance. This includes:

1. Local BAP priorities (Space for Wildlife)
2. National BAP Priority habitats (Space for Wildlife list of habitats of national importance used)
3. 'Living Landscapes' (Space for Wildlife)
4. Additional landscape areas and Biodiversity Quality Assessment (Applying the Biodiversity Net-gain Metric)
5. Local Wildlife Sites (Space for Wildlife)
6. Nationally designated sites (WCA 1981)
7. LRWT Reserves
8. Wildlife Corridors (defined for Applying the Biodiversity Net-gain Metric as linear features in the landscape including buffers. These linear features include railway lines (used/disused/dismantled), canals (used and disused) and watercourses (rivers and streams) and their floodplains).

1.30 Action for Nature⁹ builds on, and compiles, related internal and external facing strategic documents prepared by and for the county council as they relate to nature recovery. All goals, mechanisms and actions for supporting and improving nature are summarised and aligned. The document was produced in collaboration between Leicestershire County Council, LRERC and LRWT.

1.31 The draft Leicester, Leicestershire & Rutland LNRS is scheduled for public consultation in Q4 2025. Harborough District Council is one of the supporting authorities engaged with development of the LNRS. This final LNRS will subsequently be published in 2025 (anticipated Q3 2025). Some of the data used to inform the draft LNRS is considered within this assessment, as identified through consultation with the LNRS team, to enable an assessment of land in relation to its strategic ecological importance (see **Chapter 2**). However,

⁴ Leicestershire County Council (2020) *revised*. Environment Strategy 2018 – 2030: delivering a better future.

⁵ Leicestershire County Council (2020). Country Parks and Open Spaces Strategy 2019-2029.

⁶ Leicestershire County Council (2020). Tree Management Strategy 2019-2025.

⁷ Headley, K., & Timms, S. (2022). Biodiversity Quality assessment – Leicestershire.

⁸ Timms, S (2022). Applying the Biodiversity Net-gain metric – Interim guidance for assessing strategic significance in Leicestershire and Rutland.

⁹ Leicestershire County Council (2021). Action for Nature A Strategic Approach to Biodiversity, Habitat and the Local Environment for Leicestershire County Council.

it is recommended that the draft strategy (public consultation stage) is fully considered in the next phase of this assessment, scheduled for Spring 2025.

Harborough District Local Plan

1.32 Harborough District Council adopted the **Harborough Local Plan 2011-2031** on 30th April 2019. The adopted Local Plan sets out the vision, objectives, spatial strategy and planning policies for Harborough District for the period up to 2031.

1.33 Harborough District Council has commenced a full review of its Local Plan which will cover the period up to at least 2041. As part of the Regulation 18 stage, Harborough District Council undertook consultation on the Issues and Options between January and February 2024 to seek views on potential options for growth and distribution of growth within Harborough District. Alongside this consultation a further Call For Sites was undertaken.

1.34 The Council is following a fast-track programme to prepare the Local Plan in order to meet the Government's requirements. The plan is due to be reviewed by the Inspector in Autumn 2025.

Associated Projects

Sustainability Appraisal and Strategic Environmental Assessment

1.35 Harborough District Council commissioned LUC in March 2023 to carry out a Sustainability Appraisal (SA) incorporating Strategic Environmental Assessment (SEA) of the emerging new Harborough Local Plan. Under the amended Planning and Compulsory Purchase Act 2004, Strategic Assessment is mandatory for Development Plan Documents. For these documents it is also necessary to conduct an environmental assessment following the requirements of the Strategic Environmental Assessment (SEA) Directive (European Directive 2001/42/EC). The Strategic Assessment includes an assessment of all proposed site allocations to identify the sustainability of sites, including a high-level assessment of their impact on biodiversity assets.

Landscape Evidence

1.36 Harborough District Council commissioned LUC in March 2023 to provide various pieces of landscape evidence including a Landscape Sensitivity Assessment to provide an indication of landscape and visual sensitivity to the proposal types across the District, and a Landscape Character Assessment (LCA) to underpin the review of the Local Plan and to assist in the local planning process. Additionally, LUC

has prepared an Areas of Separation Study examining the gap suitability, spatial extents and justification.

Climate Change Study

1.37 LUC was commissioned in 2024 by Harborough District Council to undertake a climate change study comprising three elements:

1. Climate change risk assessment,
2. Policy review,
3. Renewable energy assessment.

1.38 This evidence gathered has been used to inform the identification and selection of policies in the upcoming Local Plan update so that it addresses the challenges of climate change mitigation and adaptation across the district.

Critical Friend Review of Local Plan Policies supported by LNRS addendum note

1.39 LUC was also commissioned in September 2024 to undertake a *critical friend review* of select environmental policies from Harborough District Councils' new draft Local Plan post Issues and Options Consultation (Regulation 18), which occurred between 16th January and 27th February 2024. This work was well received and led to a request for further input supporting the council assess how they could "take account" of the LNRS within their Updated Local Plan, as per the Levelling Up and Regeneration Act 2023 requirements. Commissioned in March 2025, the File Note forms an addendum to the Draft Local Plan Policies Review (2024) in light of the report not including recommendations based on the draft LNRS due to a conflict in timing. The note sets out the postponed LNRS review and associated recommendations and should be viewed as supplementary to the previous report, not altering or superseding the recommendations detailed within it.

Chapter 2

Methodology

2.1 The desk based assessment of proposed allocated sites is intended to provide evidence based appraisals of all sites based on their:

1. Likelihood to impact biodiversity assets present;
2. Potential to support delivery of on-site BNG;
3. Influence on, and likelihood to be influenced by, strategic spatial plans.

2.2 The process must be repeatable and accessible to enable LRERC and the Council to support further site assessments when required and for development management assessments to be undertaken in line with the findings.

2.3 The study area consists of the 140 sites provided by Harborough District Council to be assessed, all of which are listed in **Appendix B**. All sites were provided with a unique identifier, and LUC also gave each site a unique reference for the purposes of the analysis. An additional site was added and incorporated into the assessment, LUC_126, though the council did not provide a unique identifier for this site. n.b. in the results in **Appendix B**; LUC_138 & LUC_139 are absent as the two were combined into one site LUC_142.

Identification of Assessment Parameters

2.4 Parameters are those attributes that can be utilised to assess all sites and inform the requirements above. They must be discrete, linked to the policy and legislative framework and have associated data available to analyse using GIS. The latter can be polygon, line or point data with supporting attributes that relates directly to a parameter, such as GIS shapefiles of Statutory Designated Sites, or proxies for the parameter such as Great Crested Newt (GCN) Risk Zones to support the determination of risk to GCN.

2.5 The parameters were selected by consulting local, county-wide and national policy, legislative and strategic biodiversity documents as listed in **Chapter 1**: Introduction .

2.6 **Table 2.1** lists the selected parameters, the source of the associated data and the queries the subsequent analysis asked of the data. Where a parameter is considered additional to policy and legislative requirements, it is included because of the value and insight it can offer to this analysis. Spatial buffers of 250m and 1km are utilised for consistency with the Habitat Regulations Assessment (HRA) (in progress, 2024).

These buffers allow for assessment of features in close proximity to the site at two different ranges.

2.7 Several parameters were initially included in scope for the assessment and removed from the finalised list due to lack of access to the underlying data or other reasons. These included:

- Internationally designated sites (SPA, SAC, Ramsar) – nationally held dataset of internationally designated sites. No internationally designated sites are located within the study area so the parameter was removed from analysis.
- National Nature Reserves – these nationally designated sites are intended to preserve high quality habitats for research and education purposes. There are no NNRs in the study area so the parameter was removed from analysis.
- RSPB Reserves – these are sites owned or managed by the RSPB to promote the conservation of birds and other species. No reserves are located within the study area so the parameter was removed from analysis.
- Wildlife Trust Reserves – sites owned or managed by the local Wildlife Trust to promote conservation. No reserves are located within the study area so the parameter was removed from analysis.
- Veteran Trees – locally held records of confirmed veterans to contribute to the alignment with the county Tree Strategy. These records were not available from either the LRERC at the time of writing.
- Priority Habitats – locally held records of confirmed priority habitats are considered to be preferential to the national habitat data due to inaccuracies. However, LRERC do not host a dataset of priority habitat identified and surveyed locally.
- Habitat networks – Locally held data pertaining to an analysis undertaken by NW Environmental for Space for Wildlife. LRERC did not retain this data beyond the project.
- Important plant areas – Plantlife’s strategic areas identified as of significant importance for preserving and promoting plant conservation. None of these strategic areas are located within the study area and therefore the parameter has been removed.
- Important bird areas – the RSPB has identified areas of particular importance for bird conservation. None of these strategic areas are located within the study area and therefore the parameter has been removed.
- Sensitive catchments – these are catchments identified in the Levelling up and Regeneration Act 2023 associated with internationally designated sites requiring nutrient neutrality. No such catchments are located within the study area.
- The LLR LNRS will be a key in establishing strategic significance when published (due late 2025). In consulting with the LNRS team, it is clear that the areas identified as Living Landscapes, Wildlife Corridors and the Biodiversity Quality Assessments – data already taken into account in this assessment – are core elements of the forthcoming LNRS. The draft LNRS published for public consultation, including the Biodiversity Priorities, Biodiversity Opportunities and strategic mapping are included in the next phase of this assessment, due in Spring 2025. .

Table 2.1 Parameters for Desk Based Assessment

Parameter	Description	Data Source	Policy/legislation link	Queries	Category
SSSI	Statutory designated sites.	Natural England	Wildlife and Countryside Act 1981	Does site, 250m & 1km buffers overlap?	Key receptor Strategically Significant
SSSI Risk Zones	Impact zones for developers to identify potential risk that relate to SSSIs.	Natural England	Wildlife and Countryside Act 1981	Does site overlap?	Key receptor
Local Nature Reserve	Statutory designated sites declared locally by LPA.	Natural England	National Parks and Access to the Countryside Act 1949	Does site, 250m & 1km buffers overlap?	Key receptor
Local Wildlife Sites	Non-statutory designated site designated locally.	LRERC	NPPF	Does site, 250m & 1km buffers overlap?	Key receptor Strategically Significant
Open space designation	Green space designation identified by LPAs.	Harborough District Council	NPPF	Does site, 250m & 1km buffers overlap?	Key receptor
Priority habitat	Habitats identified as priority nationally and subject to protections.	Natural England	Wildlife and Countryside Act 1981	Does site, 250m & 1km buffers overlap?	Key receptor Strategically Significant BNG suitability
Ancient Woodland	Irreplaceable habitat	Natural England	Wildlife and Countryside Act 1981	Does site & 250m buffers overlap?	Key receptor BNG suitability
Protected species	Species with legal protections.	LRERC	Wildlife and Countryside Act 1981	Does site, 250m & 1km buffers overlap?	Key receptor
Priority species	Species listed as a priority locally.	LRERC	Biodiversity Action Plan (see Appendix A)	Does site, 250m & 1km buffers overlap?	Key receptor
Habitat Networks	Strategic mapping identifying areas suitable for habitat enhancement, restoration and creation	Natural England	Additional (evidence led opportunity mapping)	Does site or 250m buffer overlap with different zones?	Ecological networks and opportunities

Parameter	Description	Data Source	Policy/legislation link	Queries	Category
Strategic flood risk modelling (Flood 2 and 3)	Areas subject to flood risk	Environment Agency	Applying the Biodiversity Net-gain Metric	Does site or 250m buffers overlap?	Key receptor
Climate change vulnerability	Assessment made by Natural England identifying areas more susceptible to the impacts of climate change.	Natural England	Additional (evidence led mapping contributing to understanding of the effects of climate change on sites)	Does site or 250m buffers overlap with different zones?	Ecological networks and opportunities
Biodiversity Quality Assessment report (score of 1-6)	Leicestershire-wide assessment of value for biodiversity	LRERC	Space for Wildlife	Average score	Strategically Significant
Living Landscapes	Spatial areas identified as priorities for nature restoration in Leicestershire	LRWT	Space for Wildlife	Does site overlap?	Strategically Significant Ecological networks and opportunities
Wildlife Corridors	Ecological networks and corridors within Leicestershire.	LRERC	Applying the Biodiversity Net-gain Metric	Does site or 250m buffers overlap?	Strategically Significant Ecological networks and opportunities
Accessible Natural Greenspace assessment	Leicestershire assessment of accessibility of natural greenspace and whether ANGST standards are met.	LRERC	Analysis of Accessible Natural Greenspace	Does site or 250m buffers overlap?	Ecological networks and opportunities
District Level Licensing risk zones	Areas identified as potentially supporting populations of GCN.	Natural England	Wildlife and Countryside Act 1981	Does site overlap with different zones?	Key receptor
B-Line	Strategic national networks for invertebrates and pollinators.	Buglife	Additional (evidence led strategic mapping from NGO)	Does site or 250m buffers overlap?	Ecological networks and opportunities

GIS Analysis

2.8 The LUC GIS team gathered the relevant data as shapefiles. Using ArcGIS they created queries, overlapping the mapped data presented in **Table 2.1** with the locations of the proposed sites. This allowed the calculation of percentage cover for each parameter.

2.9 The GIS team worked to data licences agreed with Harborough District Council and LRERC, limiting the capacity to share the data in publications. The figures created for this report abide by these agreements.

Matrix Analysis

2.10 Data of the percentage of overlap between sites and ecological parameters were exported from ArcGIS as a spreadsheet for further analysis by LUC Ecologists. Each parameter has been categorised as, and sites were assessed against, one or more of the following (which can be seen in **Table 2.1**) of these broad categories:

1. *Key receptor* – these parameters are receptors with statutory footing and could be highly sensitive, and should be considered through the planning process.
2. *Strategic Significance* – these are areas or features that qualify as Strategically Significant within BNG. The associated multiplier in the Statutory Metric causes Strategically Significant habitats and sites to be of higher value and thus require larger offsets and gains to fulfil the BNG requirements. It also has the potential to offer greater gains for these sites if proposed enhancements and creation are appropriately designed. This includes being within areas identified in the LNRS—once these are published in 2025—as important for nature recovery, or prior to that those that comply with the Applying the Biodiversity Net-gain Metric document:
 - Local BAP priorities
 - National BAP Priority habitats
 - Living Landscapes
 - Additional landscape areas and Biodiversity Quality Assessment
 - Local Wildlife Sites
 - Nationally designated sites (removed from the analysis due to absence in study area)
 - LRWT Reserves (removed from the analysis due to absence in study area)
 - Wildlife Corridors

3. *BNG suitability* – where sites support habitats of high ecological value, achieving the required off set and gains to fulfil BNG requirements can be challenging. The BNG hierarchy makes clear the preference for on-site delivery of BNG requirements. Habitats are attributed distinctiveness in the Statutory Metric, which also ensures compliance with trading rules. These rules require the higher distinctiveness habitats be offset and compensated for using the same habitat or one with similarly high distinctiveness (varies according to the level of distinctiveness). Accordingly, sites that support priority habitats are considered to present more significant challenges. Furthermore, the statutory metric is unable to take account of irreplaceable habitats such as ancient woodland. As a result, sites supporting ancient woodland are less suitable for achieving BNG. However, no sites in the study area overlap with records of ancient woodland. As a result, only presence of priority habitat can be considered in this assessment.
4. *Ecological networks and opportunities* – spatial opportunity areas identified by third parties to contribute toward ecological networks. Sites within these could contribute strongly to the nature recovery network.

Assessment Method

2.11 A binary score (1 = Yes, 0 = No) was assigned to each parameter for each site based on GIS analysis, and accumulated for each category. Where a parameter was found to be present within the site, within 250m of a site or within 1km of a site it received a score of 1. The buffers included the site so that where a parameter was present on the site it received a score of 1 for each (total of 3 for that parameter), but if it was present only within 1km it received a score of 1 once. This created a weighting of the scoring to emphasise the importance of the presence of a parameter on site.

2.12 For the Key Receptor category, to allow for more nuance of the scoring system, a third response category was added. This allowed for the assessment to take account of sites with lower coverage of key receptors and enable assessors to take account of variation and its influence on scoring:

- 0: No (0-1% coverage)
- 1: Partially (1-40% coverage)
- 2: Fully (40-100% coverage)

2.13 Finally, scores for each broad category were normalised (0-1 range) to allow comparability across categories and sites.

Rating and Ranking

2.14 Each site has been attributed a sensitivity rating according to the scores from the various categories described

above. This relies on the scoring resulting from the analysis of parameters and the application of the professional judgement of strategic ecologists.

2.15 Most consideration is given to *key receptors* due to their high sensitivity, level of protection, and the requirement to consider their preservation or enhancement. The presence of any key receptors has the potential to support an assessment of the site being highly sensitive, though this is considered in the context of the site and wider landscape.

2.16 The *key receptor* category is paramount in the sensitivity assessment. A high score in this category (≥ 0.4) assigns the site a High Sensitivity rating. Additionally, the presence of a designated site (LWS) overlapping the site in question automatically assigns High Sensitivity rating, even when the scores wouldn't otherwise identify the site as High Sensitivity. Where this situation is applied, it is noted in the results as a "feature of particular concern".

2.17 Consideration for *Strategic Significance* and *BNG suitability* are also considered highly when attributing sensitivity ratings. Complex BNG requirements can result in a site presenting more challenges for proposals, and thus

considered more highly sensitive. However, given the structure of BNG processes, alternative solutions are available and thus these categories are not weighted as highly as *key receptors*.

2.18 *BNG Suitability* is intended to take account of features on-site that could cause challenges for proposals in achieving BNG on-site. However, given the aforementioned lack of ancient woodland within any of the proposed sites, the formula will take account only of the percentage cover of priority habitat on site. If less than 1% it is considered Low to Moderate and scored 0.1, between 1% & 5% it is considered Moderate and scored 0.3, between 5% & 10% it is considered Moderate to High and scored 0.4 and where percentage cover is greater than 10% the site receives a score 0.5 and is considered to be High Sensitivity.

2.19 The *ecological networks and opportunities* category is considered the least influential in attributing sensitivity ratings. While important for informing site suitability within the wider nature network, the supporting data for this category informs rather than restricts and can help identify a site's suitability in the wider nature network.

Table 2.2 Sensitivity ratings

Category of Sensitivity	Description	Criteria
Low	Site development would appear to be subject to no or very few minor ecological constraints. Some surveys may be required at a later time, though these are unlikely to be detailed surveys. BNG requirements highly likely to be achievable on-site.	<p>All of the following:</p> <ul style="list-style-type: none"> ■ Key receptor score: 0 ■ Strategic significance score: 0 ■ BNG Suitability score: 0 ■ Ecological networks and opportunities score: Up to 0.2
Low to Moderate	Site subject to small number of minor ecological constraints. Sensitive design and small scale mitigation possibly required and further ecological surveys potentially required, especially where proposals are large scale. BNG requirements likely achievable on-site. for example, a LWS may be in close proximity, protected species records are in close proximity or it is within an Amber GCN District Level Licensing zone.	<p>At least one of the following:</p> <ul style="list-style-type: none"> ■ Key receptor score: 0.1 to 0.2 ■ Strategic significance score: 0.1 to 0.3 ■ BNG suitability score: 0.1 to 0.3 ■ Ecological networks and opportunities score: 0.3 to 0.4

Moderate	<p>Site considered to support small number of relatively important , or several minor ecological constraints. Careful consideration for avoiding impacting them through design is recommended and how to mitigate if impacts are unavoidable. BNG requirements are likely to be achievable on-site. It is likely that more ecological surveys and advice is required to inform proposals, though due to the scale of receptors these may not be required at master-planning stage. For example, records of some protected species are located on site or in close proximity and is strongly aligned with ecological opportunity areas.</p>	<p>At least one of the following:</p> <ul style="list-style-type: none"> ■ Key receptor score: 0.2 to 0.3 ■ Strategic significance score: 0.3 to 0.4 ■ BNG suitability score: 0.3 to 0.4 ■ Ecological networks and opportunities score: 0.4 to 0.5
Moderate to High	<p>Some relatively important or/and numerous minor ecological receptors present, found on site and in close proximity. Careful consideration for avoiding impacting them through design, potentially at master planning stage, is recommended and how to mitigate if impacts are unavoidable. Early consideration for how BNG requirements could be fulfilled on site is recommended, including how to retain and provide habitats of moderate of higher distinctiveness.. Detailed ecological surveys and mitigation likely required to further any scale of proposals. For example, small areas of priority habitat may be present on site as well as records of protected species.</p>	<p>At least one of the following:</p> <ul style="list-style-type: none"> ■ Key receptor score: 0.3 to 0.4 ■ Strategic significance score: 0.4 to 0.5 ■ BNG suitability score: 0.4 to 0.5 ■ Ecological networks and opportunities score: 0.5 to 0.6
High	<p>The site has some relatively major ecological receptors and/or numerous other receptors on site and in close proximity. Proposals could be subject to detailed ecological surveys, mitigation and design would likely be significantly influenced by their presence and location. Though BNG is potentially achievable on-site, careful planning will be required enabling the retention of receptors where possible and provision of moderate or higher distinctiveness habitats. For example, this could include the presence of a LWS and priority habitat on site.</p>	<p>If any of the following:</p> <ul style="list-style-type: none"> ■ Key receptor score: ≥ 0.4 (automatically assigns High Sensitivity) ■ Strategic significance score: 0.5 to 1 ■ BNG suitability score: 0.5 to 1 ■ Ecological networks and opportunities score: 0.6 to 1

2.20 The results will provide each site with a summary description of ecological constraints, the scores for each category, highlight any particular issues and provide a sensitivity rating. Results will be ranked according to their sensitivity ratings to provide clear preferences to inform site selection.

2.21 Example of site scores:

- Key receptor: 0.1 -> falls within Low to Moderate sensitivity range
- Strategic Significance: 0.9 -> falls within the High sensitivity range.

- BNG: 0.9 -> falls within the High sensitivity range
- Ecological networks: 0.5 -> falls within the Moderate sensitivity range

2.22 Despite the low score in the key receptor category, the very high scores in Strategic Significance and BNG Suitability indicate substantial ecological constraints. According to the sensitivity ranking, the site is assigned a High Sensitivity rating due to the significant impact of these factors.

Climate Change Vulnerability

2.23 Natural England has developed a GIS model providing an assessment of the vulnerability of habitats to climate change based on their principles of adaptation for biodiversity. The dataset provides an insight into the susceptibility of the natural environment to climate change risks and can inform plan making in ensuring appropriate consideration of these risks and implementation of nature based solutions to ameliorate these risks are built in to designs at an early stage. This dataset is used as a parameter (Table 2.1) as well as being identified within the results for each site where the site is considered to overlap significantly with the areas identified by the dataset.

Limitations

2.24 This assessment is based on data either publicly available or available from the local records centre. It is recognised that in the absence of ground-truthing, this could result in inaccuracies of the assessment. The next phase of the project will include site surveys, helping to validate the desk based assessments.

2.25 The Accessible Natural Greenspace Standards¹⁰ (ANGSt) standards used for the Leicestershire-wide assessment, the results from which are informing this study, have now been superseded. It is recommended that the Council considers the updated standards in updating the Local Plan for Regulation 19 consultation. At the time of writing, it is understood that an updated GI study is underway in support of the Local Plan. Once finalised, the findings should be considered in assessing the provision of accessible natural greenspace across the District and how this relates to plan making.

2.26 Protected species records can vary in their resolution due to a number of factors such as age of record and sensitivity of species. The records provided for the analysis varied, some were point data and some were spatial grid data. These latter were given a centroid to allow for the GIS analysis thus inevitably skewing the data and analysis to some degree. Further surveys in Phase 2 will provide additional info on the sites of higher ecological sensitivity, sufficient to inform the Local Plan process. Full ecological surveys, appropriately scoped to each site, will be completed as part the development planning system at any site coming forward for development in due course.

¹⁰ <https://publications.naturalengland.org.uk/publication/65021>

Chapter 3

Results

3.1 The results are summarised and categorised by sensitivity of sites. All sites, whether proposed for residential or employment use are considered similarly due to the focus of the assessment being on ecological receptors rather than specific proposals. Each site is briefly described, with reference to any key receptors. **Appendix B** tabulates the full results from the analysis. The sites, according to their sensitivity status have been mapped to better understand any spatial distributions and to present findings. These maps are found in **Appendix C**.

High Sensitivity Sites

3.2 **Table 3.1** summarises the 42 sites considered to be of High Sensitivity. Many of these sites have been assessed as being High Sensitivity due to the Key Receptor score. Many of these sites overlap in part (sometimes the overlap consists of very small percentage) with LWS or priority habitat, sometimes both. Where the site overlaps with the former, it has been considered a *feature of particular concern* and the site is automatically assigned High Sensitivity. Additionally, several of the sites score significantly for BNG Suitability due to the presence of a significant percentage of the site being recorded as priority habitat.

Table 3.1 High Sensitivity sites

LUC Ref	Site	Key Receptor score	Strategic Significance score	BNG Suitability score	Ecological Networks and Opportunities score
LUC_1	10595	1.00	0.22	0.00	0.18
LUC_5	8202	1.00	0.28	0.00	0.27
LUC_6	8135	1.00	0.28	0.00	0.14

LUC Ref	Site	Key Receptor score	Strategic Significance score	BNG Suitability score	Ecological Networks and Opportunities score
LUC_85	8155	1.00	0.28	0.10	0.27
LUC_133	8737	1.00	0.44	0.00	0.18
LUC_144	12207	0.25	0.28	0.50	0.27
LUC_166	8227	1.00	0.22	0.00	0.27
LUC_177	8241	1.00	0.42	0.00	0.14
LUC_188	8122	1.00	0.56	0.30	0.41
LUC_222	8167	1.00	0.25	0.00	0.27
LUC_233	8247	1.00	0.39	0.00	0.41
LUC_244	8631	1.00	0.42	0.30	0.36
LUC_277	10042	1.00	0.22	0.00	0.09
LUC_300	12222	1.00	0.58	0.50	0.18
LUC_322	12189	1.00	0.42	0.10	0.32
LUC_400	8205	1.00	0.28	0.00	0.18
LUC_422	8215	1.00	0.28	0.00	0.23
LUC_433	8218	1.00	0.42	0.00	0.41

LUC Ref	Site	Key Receptor score	Strategic Significance score	BNG Suitability score	Ecological Networks and Opportunities score
LUC_499	8060	1.00	0.39	0.00	0.36
LUC_533	8044	1.00	0.28	0.00	0.27
LUC_577	8087	1.00	0.22	0.00	0.18
LUC_600	8134	1.00	0.42	0.00	0.23
LUC_677	8149	1.00	0.25	0.00	0.27
LUC_688	8150	1.00	0.58	0.40	0.32
LUC_700	8152	1.00	0.44	0.10	0.45
LUC_722	8162	1.00	0.36	0.00	0.36
LUC_799	8220	1.00	0.39	0.00	0.41
LUC_833	8236	1.00	0.39	0.00	0.32
LUC_855	8242	1.00	0.25	0.00	0.27
LUC_899	8196	1.00	0.39	0.30	0.18
LUC_944	10257	1.00	0.25	0.00	0.27
LUC_955	10318	1.00	0.25	0.00	0.41
LUC_1055	9895	1.00	0.25	0.00	0.23

LUC Ref	Site	Key Receptor score	Strategic Significance score	BNG Suitability score	Ecological Networks and Opportunities score
LUC_106	10612	1.00	0.25	0.00	0.27
LUC_111	10117	1.00	0.58	0.40	0.18
LUC_112	10255	1.00	0.22	0.00	0.18
LUC_113	9355	1.00	0.22	0.00	0.23
LUC_116	10012	1.00	0.39	0.00	0.41
LUC_128	8093	1.00	0.32	0.40	0.32
LUC_131	8132	1.00	0.44	0.30	0.23
LUC_132	8141	1.00	0.39	0.00	0.41
LUC_140	12231	1.00	0.36	0.00	0.27

Site 10595 - Land south of Lutterworth Rd / Coventry Rd

3.3 This site has been assessed as being of High Sensitivity due to its Key Receptor and Strategic Significance scores. This is mainly due to a LWS being located partially on site (<5% cover), considered as a feature of particular concern. These sites receive protection through planning and will include examples of locally important habitats. Records of badger activity identified in the relevant search radius. As they are protected species, if they are found to be present on site, significant mitigation could be required. Additionally, multiple bat species have been recorded within 250m of the site and similar considerations may be taken due to the protected status of bats. The site also lies in a GCN Amber Zone for District Level Licensing and their potential presence could prompt further surveys and mitigation measures. The site is considered to be in an area subject to a higher risk of climate change impacts as well as an area with lower access to

natural greenspace. As a result, proposals should consider the potential impacts of climate change and how to ameliorate the associated risks, as well as provision of natural greenspace accessible to residents.

Site 8202 - Former Lorry Park Gaulby Road

3.4 This site has been assessed as being of High Sensitivity due to its Key Receptor score. This is due to a LWS being located partially on site (<1% cover), considered as a feature of particular concern. The site also lies in an GCN Amber Zone for District Level Licensing. The potential presence of GCN could prompt further surveys and mitigation measures. Furthermore, the site is considered to be in an area subject to a higher risk of climate change impacts. As a result, proposals should consider the potential impacts of climate change and how to ameliorate the risk.

Site 8135 - Land north of Stretton Lane

3.5 This site has been assessed as being High Sensitivity due to its Key Receptor score. This is due to a LWS being located partially on site (<1% cover), considered as a feature of particular concern. Additionally, barn owl has been recorded on site. As they are a protected species, if they are found to be roosting on site, significant mitigation could be required. GCN have been recorded within 250m, and the site also lies in a GCN Amber Zone for District Level Licensing. The potential presence of them could prompt associated species surveys and mitigation measures. Multiple bat species have also been recorded within 250m of the site and similar considerations may be taken due to their protected status. Records of badger activity identified in the relevant search radius. As they are protected species, if they are found to be present on site, significant mitigation could be required. The site is considered to be in an area with lower access to natural greenspace. As a result, proposals should consider the provision of natural greenspace accessible to residents.

Site 8155 - Land at Gaulby Road

3.6 This site has been assessed as being of High Sensitivity due to its Key Receptor and BNG suitability scores. This is due to a significant area of the site (>50%) being a LWS and the presence of deciduous woodland. As a result, this could make it challenging to achieve BNG requirements on-site. Records of badger activity identified in the relevant search radius. As they are protected species, if they are found to be present on site, significant mitigation could be required. Furthermore, the site lies in a GCN Amber Zone for District Level Licensing. The potential presence of protected or important species could prompt associated species surveys and mitigation measures. The site is also considered to be in an area subject to a higher risk of climate change impacts. As

as a result, proposals should consider the potential impacts of climate change and how to ameliorate the risk.

Site 8737 – Land OS3070, Leicester Rd

3.7 This site has been assessed as being of High Sensitivity due to its Key Receptor and Strategic Significance scores. This is predominantly due to a LWS being located partially on site (<5% cover). Records of badger activity identified in the relevant search radius. As they are protected species, if they are found to be present on site, significant mitigation could be required. The site also lies in a GCN Amber Zone for District Level Licensing and the potential presence of them could prompt further surveys and mitigation measures. Furthermore, the site is considered to be in an area subject to a higher risk of climate change impacts. As a result, proposals should consider the potential impacts of climate change and how to ameliorate the risk.

Site 12207 E- Billesdon Depot south of Gaulby Road

3.8 This site has been assessed as being of High Sensitivity due to its BNG suitability score. This is due to the presence of deciduous woodland on site and the challenges associated with the potential loss and offsetting of this feature to fulfil BNG requirements. More than 15% of the site is recorded as supporting this priority habitat. Although presence of protected species was not recorded on site, the species records search identified grass snake and barn owl within 250m of the site. The site also lies in a GCN Amber Zone for District Level Licensing. Records of badger activity identified in the relevant search radius. These could prompt further surveys and appropriate mitigation. Furthermore, the site is considered to be in an area subject to a higher risk of climate change impacts. As a result, proposals should consider the potential impacts of climate change and how to ameliorate the risk.

Site 8227 – Land between Scaptoft & Bushby

3.9 This site has been assessed as being of High Sensitivity due to its Key Receptor score. This is due to a LWS being located partially on site (<5% cover), an LNR within the search distances and records of protected species on site including badger and otter, which if present on site, could require significant mitigation. Additionally, multiple bat species have been recorded within 250m of the site and similar considerations may be taken due to the protected status of bats. The site also lies in a GCN Amber Zone for District Level Licensing and the potential presence of them could prompt further surveys and mitigation. Furthermore, the site is considered to be in an area subject to a higher risk of climate change impacts. As a result, proposals should consider the potential impacts of climate change and how to ameliorate the risk.

Site 8241 - Land north of the A47, east of Zouche Way

3.10 This site has been assessed as being of High Sensitivity due to its Key Receptor and Strategic Significance scores. This is due to a LWS being located partially on site (<5% cover). Records of badger activity identified in the relevant search radius. As they are protected species, if they are found to be present on site, significant mitigation could be required. Furthermore, multiple bat species and barn owl have been recorded within 250m. Potential for roosting bats and barn owls should be considered as well as whether the site contains suitable habitat that would support foraging for these species. The site also lies in a GCN Amber Zone for District Level Licensing and the potential presence of them could prompt further surveys and mitigation measures.

Site 8122 - East of Market Harborough Road

3.11 This site has been assessed as being of High Sensitivity due to its Key Receptor, Strategic Significance and BNG Suitability scores. A LWS is located partially on site (<5% cover) and deciduous woodland is also found on site. This is likely to result in challenges achieving BNG requirements due to the presence of a priority habitat and the difficulties of offsetting its potential loss, exacerbated by the likely Strategic Significance multiplier applied to habitats on site. This will result in habitats being valued higher and the subsequent amount of off set and gains required to be higher as well. Additionally, species records include otter, kingfisher and amphibians suggesting close proximity to a watercourse. Consideration of this could result in requirements for associated species surveys and mitigation. Records of badger activity identified in the relevant search radius. As they are protected species, if they are found to be present on site, significant mitigation could be required. GCN records have been identified within 250m of the site and the site lies within the Amber Zone for District Level Licensing. Consideration to the presence of the local GCN population will be required in proposals for this site and potential mitigation required as a result. Multiple bat species records have been identified within 250m of the site, therefore consideration of their presence on site will be required, especially given the presence of woodland and its potential to support roosting bats. The site is considered to be in an area subject to a higher risk of climate change impacts. As a result, proposals should consider the potential impacts of climate change and how to ameliorate the risk.

Site 8167 - Land off Leicester Road, Lutterworth

3.12 This site has been assessed as being High Sensitivity due to its Key Receptor score. This is due to a LWS being located partially on site (<1% cover), considered as a feature of particular concern. Additionally, GCN have been recorded within 250m, and the site also lies in an Amber Zone for

District Level Licensing. The potential presence of GCN could prompt further surveys and mitigation measures. Furthermore, the site is considered to be in an area subject to a higher risk of climate change impacts as well as an area with lower access to natural greenspace. As a result, proposals should consider the potential impacts of climate change and how to ameliorate the risk as well as provision of natural greenspace accessible to residents.

Site 8247 - Land west of Warwick Road

3.13 This site has been assessed as being of High Sensitivity due to its Key Receptor score, though it also has a moderate Strategic Significance score. This is due to a LWS being located partially on site (<1% cover), which is considered to be a feature of particular concern. Additionally, it is located within a Wildlife Corridor. This could result in BNG requirements being more challenging to deliver on-site. Records of badger activity identified in the relevant search radius. As they are protected species, if they are found to be present on site, significant mitigation could be required. The site also lies in a GCN Amber Zone for District Level Licensing and the potential presence of them could prompt further surveys and mitigation measures. Furthermore, the site is considered to be in an area subject to a higher risk of climate change impacts. As a result, proposals should consider the potential impacts of climate change and how to ameliorate the risk.

Site 8631 - Land south of Gartree Rd & East of Oadby

3.14 This site has been assessed as being of High Sensitivity due to its Key Receptor score, though the site also has moderate scores for BNG Suitability and Strategic Significance. This is due to a LWS being located partially on site (<1% cover) and the presence of deciduous woodland and pond, both priority habitats on site. The site is also within the flood zone and a Wildlife Corridor. As a result, this could make it challenging to achieve BNG requirements on-site. Additionally, there are numerous records of barn owl, GCN, otter and multiple bat species on site, which also lies within the Amber Zone for District Level Licensing. Records of badger activity identified in the relevant search radius. Consideration to the presence of protected species will be required in proposals for this site and potential mitigation required as a result, especially given the presence of a pond on site that could be utilised by the local GCN population for breeding. Furthermore, the site is considered to be in an area subject to a higher risk of climate change impacts. As a result, proposals should consider the potential impacts of climate change and how to ameliorate the risk. Scoring moderately across multiple categories identifies this site as supporting multiple receptors of concern for ecology, whilst also potentially providing opportunities as part of the local nature recovery network.

Site 10042 - Land north of Kilby Road

3.15 This site has been assessed as being of High Sensitivity due to its Key Receptor score. This is due to a LWS being located partially on site (<1% cover). Though the site supports few other significant receptors, the presence of a LWS is a feature of particular concern. Additionally, multiple bat species have been recorded within 250m of the site. As they are protected species, if they are found to be present on site, significant mitigation could be required. The site also lies in a GCN Amber Zone for District Level Licensing. The potential presence of GCN could prompt further surveys and mitigation measures.

Site 12222 - Land west of Beeby Road (Scraptoft Golf Club), and land east and west of Hamilton Lane [Scraptoft SDA - smaller option 1]

3.16 This site has been assessed as being of High Sensitivity due to its Key Receptor, Strategic Significance and BNG Suitability scores. A LWS and Local Nature Reserve cover a significant area of the site (>30%) and a significant portion of the site is also deciduous woodland (>10%). These receptors are locally significant and are afforded protection, as a result the site should be considered as one of the most highly sensitive sites assessed. This is likely to result in challenges achieving BNG requirements due to the presence of a priority habitat and the difficulties of offsetting its potential loss, exacerbated by the likely Strategic Significance multiplier applied to habitats on site. This will result in habitats being valued higher and the subsequent amount of off set and gains to be higher as well. The species records search identified hedgehog on site, and within 250m of the site. Records of badger activity also identified in the relevant search radius. Consideration of this could result in requirements for associated species surveys and mitigation. Furthermore, multiple bat species have been recorded on site, and barn owl within 250m. Due to the presence of broadleaved woodland on site, potential for roosting bats and barn owls should be considered as well as whether the site contains suitable habitat that would support foraging for these species. Amphibian including GCN records have been identified within 250m of the site and the site also lies within the Amber Zone for District Level Licensing. Consideration to the presence of the local GCN population will be required in proposals for this site and potential mitigation required as a result. The site is considered to be in an area subject to a higher risk of climate change impacts. As a result, proposals should consider the potential impacts of climate change and how to ameliorate the risk.

Site 12189 - Land to the north of Great Glen

3.17 This site has been assessed as being of Moderate to High Sensitivity due to its Key Receptor score. This is due to a

LWS being located partially on site (<1% cover) and the presence of deciduous woodland on site. It is also located in a Wildlife Corridor and the flood risk zone. There are no records of protected species on site, however badger and multiple bat species records have been identified within the relevant search distances. The potential presence of protected species could prompt associated species surveys and mitigation measures. Additionally, the site lies within the GCN Amber Zone for District Level Licensing, and therefore, similar considerations may be made.

Site 8205 - Land south of Bird Cage Cottage, Arnesby Road

3.18 This site has been assessed as being High Sensitivity due to its Key Receptor score. This is due to a LWS being located partially on site (<1% cover). Though the site supports few other significant receptors, the presence of a LWS is a feature of particular concern. However, GCN have been recorded on site and within 250m, and the site also lies in an Amber Zone for District Level Licensing. The potential presence of GCN could prompt associated species surveys and mitigation measures. Multiple bat species have also been recorded within 250m of the site and similar considerations may be taken due to their protected status. Furthermore, the site is considered to be in an area subject to a higher risk of climate change impacts. As a result, proposals should consider the potential impacts of climate change and how to ameliorate the risk.

Site 8215 - Land South of Leicester Road

3.19 This site has been assessed as being of High Sensitivity due to its Key Receptor score. This is due to a LWS being located partially on site (<5% cover). Common pipistrelle bat has been recorded within 250m of the site. Records of badger activity identified in the relevant search radius. If protected species are found to be present on site, significant mitigation could be required. The site also lies in a GCN Amber Zone for District Level Licensing. The potential presence of GCN could prompt further surveys and mitigation measures. Furthermore, the site is considered to be in an area with lower access to natural greenspace. As a result, proposals should consider the provision of natural greenspace accessible to residents.

Site 8218 - Land east of Frolesworth Road

3.20 This site has been assessed as being of High Sensitivity due to its Key Receptor score, though the Strategic Significance score is moderate. This is due to a LWS being located partially on site (<1% cover). It is also located in a Wildlife Corridor and the flood risk zone. Additionally, species records on site include otter, kingfisher and white-clawed crayfish confirming close proximity to a watercourse. This could make achieving BNG requirements challenging.

Consideration of this could result in requirements for associated species surveys and mitigation. Records of badger activity identified in the relevant search radius. As they are protected species, if they are found to be present on site, significant mitigation could be required. The site also lies in a GCN Amber Zone for District Level Licensing and the potential presence of them could prompt further surveys and mitigation measures. Furthermore, the site is considered to be in an area subject to a higher risk of climate change impacts. As a result, proposals should consider the potential impacts of climate change and how to ameliorate the risk.

Site 8060 - Land north east of Kibworth Harcourt

3.21 This site has been assessed as being of High Sensitivity due to its Key Receptor score, though it also receives a moderate Strategic Significance score. This is due to a LWS being located partially on site (<1% cover), considered a feature of particular concern. Records of badger activity identified in the relevant search radius. As they are protected species, if they are found to be present on site, significant mitigation could be required. Additionally, multiple bat species have been recorded within 250m of the site and similar considerations may be taken due to the protected status of bats. The site also lies in a GCN Amber Zone for District Level Licensing and the potential presence of them could prompt further surveys and mitigation measures. Furthermore, the site is considered to be in an area subject to a higher risk of climate change impacts. As a result, proposals should consider the potential impacts of climate change and how to ameliorate the risk.

Site 8044 - Land south of London Road

3.22 This site has been assessed as being of High Sensitivity due to its Key Receptor score. This is due to a LWS being located partially on site (<1% cover), flagging this site as particularly sensitive. Records of badger activity identified in the relevant search radius. As they are protected species, if they are found to be present on site, significant mitigation could be required. Additionally, multiple protected species have been recorded within 250m of the site and similar considerations may be taken due to the protected status of bats. GCN was also recorded within 250m, and the site also lies in an Amber Zone for District Level Licensing. The potential presence of GCN could prompt further surveys and mitigation measures.

Site 8087 - Land north of Kilby Road

3.23 This site has been assessed as being of High Sensitivity due to its Key Receptor score. This is due to a LWS being located partially on site (<1% cover), considered a feature of particular concern. Multiple bat species have been recorded within 250m of the site. As they are protected species, if they

are found to be present on site, significant mitigation could be required. The site also lies in a GCN Amber Zone for District Level Licensing. The potential presence of GCN could prompt further surveys and mitigation measures. Furthermore, the site is considered to be in an area subject to a higher risk of climate change impacts. As a result, proposals should consider the potential impacts of climate change and how to ameliorate the risk.

Site 8134 - Old Mill Road

3.24 This site has been assessed as being of High Sensitivity due to its Key Receptor score, though the Strategic Significance score is moderate. This is due to a LWS being located partially on site (<1% cover). Additionally, species records on site include otter, kingfisher and water vole, suggesting close proximity to a watercourse. Given its location within a Wildlife Corridor and flood risk zone, the site likely supports habitats and species associated with wetlands. Achieving BNG requirements on-site could be challenging. Consideration of this could result in requirements for associated species surveys and mitigation. Barn owl has also been recorded on site, and appropriate mitigation may be required due to their protected status. Furthermore, the site is considered to be in an area subject to a higher risk of climate change impacts. As a result, proposals should consider the potential impacts of climate change and how to ameliorate the risk. Scoring moderately across multiple categories flags this site as supporting multiple receptors inferring a high level of sensitivity but also the potential to be part of the local nature recovery network.

Site 8149 - Land off Fleckney Road/Warwick Road, Kibworth

3.25 This site has been assessed as being of High Sensitivity due to its Key Receptor score. This is due to a large portion of the site supporting a LWS (approx. 25% cover). The site also lies in a GCN Amber Zone for District Level Licensing. The potential presence of GCN could prompt further surveys and mitigation measures.

Site 8150 – Land south of A47 Uppingham Road

3.26 This site has been assessed as being of High Sensitivity due to its Key Receptor, Strategic Significance and BNG Suitability scores. A LWS is located partially on site (<10% cover) and deciduous woodland is also found on site. furthermore, it is located in a Wildlife Corridor. This is likely to result in challenges achieving BNG requirements due to the presence of a priority habitat and the difficulties of offsetting its potential loss, exacerbated by the likely Strategic Significance multiplier applied to habitats on site. This will result in habitats being valued higher and the subsequent amount of off set and gains to be higher as well. Records of badger activity identified

in the relevant search radius. As they are protected species, if they are found to be present on site, significant mitigation could be required. GCN records have been identified within 250m of the site and the site lies within the Amber Zone for District Level Licensing. Consideration to the presence of the local GCN population will be required in proposals for this site and potential mitigation required as a result. Common pipistrelle bat records have been recorded within 250m of the site, therefore consideration of their presence on site will be required, especially given the presence of woodland and its potential to support roosting bats. The site is considered to be in an area subject to a higher risk of climate change impacts. As a result, proposals should consider the potential impacts of climate change and how to ameliorate the risk.

Site 8152 – North and south of Gilmorton Road (Extension to Lutterworth East SDA)

3.27 This site has been assessed as being of High Sensitivity due to its Key Receptor score, though it receives a moderate score for Strategic significance and Ecological Networks and Opportunities . This is due to a LWS being located partially on site (<1% cover), a feature of particular concern. The site is located in a Wildlife Corridor and a flood risk zone and also overlaps with some of Natural England's Habitat Network areas, indicating it is suitable for nature recovery efforts. Records of badger activity identified in the relevant search radius. As they are protected species, if they are found to be present on site, significant mitigation could be required. Furthermore, amphibian including GCN records have been recorded on site and within 250m, and the site lies within the Amber Zone for District Level Licensing. Consideration to the presence of the local GCN population will be required in proposals for this site and potential mitigation required as a result. Multiple bat species have also been recorded within 250m, and similar considerations may be taken due to the protected status of bats. The site is considered to be in an area subject to a higher risk of climate change impacts as well as an area with lower access to natural greenspace. As a result, proposals should consider the potential impacts of climate change and how to ameliorate the risk as well as provision of natural greenspace accessible to residents.

Site 8162 – Land off A6

3.28 This site has been assessed as being of High Sensitivity due to its Key Receptor score. This is due to a LWS being located partially on site (<1% cover). This feature of particular concern causes it to be considered a site of high sensitivity, but it is also located in a Wildlife Corridor. Records of multiple bat species and badger activity identified in the relevant search radius. As they are protected species, if they are found to be present on site, significant mitigation could be required. The site also lies in a GCN Amber Zone for District Level Licensing

and the potential presence of them could prompt further surveys and mitigation measures. Furthermore, the site is considered to be in an area subject to a higher risk of climate change impacts. As a result, proposals should consider the potential impacts of climate change and how to ameliorate the risk.

Site 8220 - Land at Witham Villa

3.29 This site has been assessed as being of High Sensitivity due to its Key Receptor score, though it achieves moderate Strategic Significance and Ecological Networks and Opportunities scores. This is due to a LWS being located partially on site (<1% cover) and its location in a Wildlife Corridor and within the flood risk zones. Records of badger activity identified in the relevant search radius. As they are protected species, if they are found to be present on site, significant mitigation could be required. Additionally, multiple bat species have been recorded within 250m of the site and similar considerations may be taken due to the protected status of bats. The site also lies in a GCN Amber Zone for District Level Licensing and the potential presence of them could prompt further surveys and mitigation measures. The site is considered to be in an area subject to a higher risk of climate change impacts as well as an area with lower access to natural greenspace. As a result, proposals should consider the potential impacts of climate change and how to ameliorate the risk as well as provision of natural greenspace accessible to residents.

Site 8236 – Land north-east of Harborough Road

3.30 This site has been assessed as being of High Sensitivity due to its Key Receptor score. This is due to a LWS being located partially on site (<5% cover). Records of badger activity identified in the relevant search radius. As they are protected species, if they are found to be present on site, significant mitigation could be required. Furthermore, the site is considered to be in an area subject to a higher risk of climate change impacts. As a result, proposals should consider the potential impacts of climate change and how to ameliorate the risk.

Site 8242 - Land south of Fleckney Road

3.31 This site has been assessed as being of High Sensitivity due to its Key Receptor score. This is due to a LWS being located partially on site (approx. 15% cover). Records of badger activity identified in the relevant search radius. As they are protected species, if they are found to be present on site, significant mitigation could be required. The site also lies in a GCN Amber Zone for District Level Licensing. The potential presence of GCN could prompt further surveys and mitigation measures.

Site 8196 - Land north of Covert Lane (West)

3.32 This site has been assessed as being of High Sensitivity due to its Key Receptor score, though it scores moderately for BNG suitability. A LWS is located partially (<1% cover) on site and deciduous woodland is also found on site. This is likely to present challenges achieving BNG requirements due to the presence of a priority habitat and the difficulties of offsetting its potential loss, exacerbated by the likely Strategic Significance multiplier applied to habitats on site. This will result in habitats being valued higher and the subsequent amount of off set and gains to be higher as well. Grass snake records are present on site, and badger within in the relevant search radius. As protected species, if they are found to be present on site, significant mitigation could be required. Furthermore, GCN records have been identified within 250m of the site and the site lies within the Amber Zone for District Level Licensing. Consideration to the presence of the local GCN population will be required in proposals for this site and potential mitigation required as a result. The site is also considered to be in an area subject to a higher risk of climate change impacts. As a result, proposals should consider the potential impacts of climate change and how to ameliorate the risk.

Site 10257 - Land west of Leicester Road, Lutterworth

3.33 This site has been assessed as being of High Sensitivity due to its Key Receptor score. This is due to a LWS being located partially on site (<1% cover), considered a feature of particular concern. The site also lies in a GCN Amber Zone for District Level Licensing. The potential presence of them could prompt associated species surveys and mitigation measures. Furthermore, The site is considered to be in an area subject to a higher risk of climate change impacts as well as an area with lower access to natural greenspace. As a result, proposals should consider the potential impacts of climate change and how to ameliorate the risk as well as provision of natural greenspace accessible to residents.

Site 10318 - Land at Gilmorton Road

3.34 This site has been assessed as being of High Sensitivity due to its Key Receptor score, though it receives a moderate score as well for Ecological Networks and Opportunities This is due to a LWS being located partially on site (<1% cover). Though there are few other highly sensitive receptors on site, the presence of a LWS causes the site to be considered as highly sensitive. The site is located in close proximity to a number of areas identified as a priority for nature recovery. However, GCN have been recorded on site, and within 250m, and the site also lies in a GCN Amber Zone for District Level Licensing. The potential presence of them could prompt associated species surveys and mitigation measures. Additionally, badger and multiple bat species have been

recorded within the relevant search distances and similar considerations may be taken due to their protected status. The site is considered to be in an area subject to a higher risk of climate change impacts as well as an area with lower access to natural greenspace. As a result, proposals should consider the potential impacts of climate change and how to ameliorate the risk as well as provision of natural greenspace accessible to residents.

Site 9895 - Land east of Welford Road

3.35 This site has been assessed as being of High Sensitivity due to its Key Receptor score. This is due to a LWS being located partially on site (<1% cover). Though there are few other highly sensitive receptors on site, the presence of a LWS causes the site to be considered as highly sensitive. Additionally, badgers and multiple bat species have been recorded within the relevant search distances. As they are protected species, if they are found to be present on site, species surveys and mitigation could be required. The site also lies in a GCN Amber Zone for District Level Licensing. The potential presence of them could prompt associated species surveys and mitigation measures. Furthermore, the site is considered to be in an area subject to a higher risk of climate change impacts. As a result, proposals should consider the potential impacts of climate change and how to ameliorate the risk.

Site 10612 - Land south of Fleckney Road

3.36 This site has been assessed as being of High Sensitivity due to its Key Receptor score. This is due to a LWS being located partially on site (<20% cover). Barn owl and badger have been recorded within the relevant search distances. As they are protected species, if they are found to be present on site, species surveys and mitigation could be required. Multiple bat species have also been recorded within 250m of the site and similar considerations may be taken due to their protected status. The site also lies in a GCN Amber Zone for District Level Licensing. The potential presence of them could prompt associated species surveys and mitigation measures.

Site 10117 - Land west of Beeby Road (Scraptoft Golf Club), and land east and west of Hamilton Lane [Scraptoft SDA]

3.37 This site has been assessed as being of High Sensitivity due to its Key Receptor and Strategic Significance scores whilst BNG Suitability scored moderately. A LWS and Local Nature Reserve cover a significant area of the site (approx. 20%) and deciduous woodland is also found on site (8%). These receptors are locally significant and are afforded protection, as a result the site should be considered as one of the most highly sensitive sites assessed. This is likely to result

in challenges achieving BNG requirements due to the presence of a priority habitat and the difficulties of offsetting its potential loss, exacerbated by the likely Strategic Significance multiplier applied to habitats on site. This will result in habitats being valued higher and the subsequent amount of off set and gains to be higher as well. Records of badger activity identified in the relevant search radius. As they are protected species, if they are found to be present on site, significant mitigation could be required. Furthermore, multiple bat species and barn owl have been recorded on site, and within 250m. Due to the presence of broadleaved woodland on site, potential for roosting bats and barn owls should be considered as well as whether the site contains suitable habitat that would support foraging for these species. Amphibian including GCN records have been identified within 250m of the site and the site lies within the Amber Zone for District Level Licensing. Consideration to the presence of the local GCN population will be required in proposals for this site and potential mitigation required as a result. The site is considered to be in an area subject to a higher risk of climate change impacts. As a result, proposals should consider the potential impacts of climate change and how to ameliorate the risk.

Site 10255 - Land south of Gibbet Lane

3.38 This site has been assessed as being of High Sensitivity due to its Key Receptor score. This is due to a LWS being located partially on site (<5% cover). GCN have been recorded within 250m, and the site also lies in a GCN Amber Zone for District Level Licensing. The potential presence of them could prompt associated species surveys and mitigation measures. Additionally, multiple bat species have been recorded within 250m of the site and similar considerations may be taken due to their protected status. The site is considered to be in an area with lower access to natural greenspace. As a result, proposals should consider the provision of natural greenspace accessible to residents.

Site 9355 - North of Uppingham Road (east), Houghton on the Hill

3.39 This site has been assessed as being of High Sensitivity due to its Key Receptor score. This is due to a LWS being located partially on site (<5% cover). Multiple bat species have been recorded within 250m of the site. As they are protected species, if they are found to be present on site, species surveys and mitigation could be required. The site also lies in a GCN Amber Zone for District Level Licensing. The potential presence of them could prompt associated species surveys and mitigation measures. Furthermore, the site is considered to be in an area with lower access to natural greenspace. As a result, proposals should consider the provision of natural greenspace accessible to residents.

Site 10012 - Land at Witham Villa, Broughton Road

3.40 This site has been assessed as being of High Sensitivity due to its Key Receptor score but it also scores moderately for Strategic Significance and Ecological Networks and Opportunities. This is due to a LWS being located partially on site (<1% cover), considered a feature of particular concern. It is also located within a Wildlife Corridor and the flood risk zones. This could result in achieving BNG requirements on-site being challenging. Records of badger activity identified in the relevant search radius. As they are protected species, if they are found to be present on site, significant mitigation could be required. Additionally, multiple bat species have been recorded within 250m of the site and similar considerations may be taken due to the protected status of bats. The site also lies in a GCN Amber Zone for District Level Licensing and the potential presence of them could prompt further surveys and mitigation measures. The site is considered to be in an area subject to a higher risk of climate change impacts as well as an area with lower access to natural greenspace. As a result, proposals should consider the potential impacts of climate change and how to ameliorate the risk as well as provision of natural greenspace accessible to residents.

Site 8093 – Oadby Woodlands

3.41 This site has been assessed as being of High Sensitivity due to its Key Receptor score. Priority habitat in the form of deciduous woodland and a LWS are partially present on site. The LWS, a feature of particular concern, occupies less than 2% of the site area and priority habitat approximately 5%. In addition, both protected and priority species have been recorded on site and within 250m, including barn owl and multiple species of bats, as well as locally important house martin and swallow. GCNs have also been recorded on site and the site is within a GCN Amber Zone for District Level Licensing. Records of badger activity have been identified in the relevant search radius. The potential presence of protected species could prompt species surveys and mitigation measures. Furthermore, the site is considered to be an area at risk of climate change impacts and proposals should seek to mitigate these impacts.

Site 8132 – Market Harborough

3.42 This site has been assessed as being of High Sensitivity due to its Key Receptor score. Multiple receptors including a LWS, Wildlife Corridor and priority habitat in the form of deciduous woodland are partially present on site and within 250m. Around 50% of the site is also located within a flood zone. Otters, water vole and kingfisher have been recorded on site inferring the presence of a watercourse on site as well as several other protected species not directly associated with watercourses within the relevant search distances including GCN, badger, slow-worm, grass snake and common

pipistrelle. Additionally, the site lies within a GCN Amber Zone for District Level Licensing. The potential presence of protected species would require additional surveys and mitigation. More than 70% of the site cover is also considered to be at a higher risk of climate change impacts and therefore, proposals should seek to ameliorate risks.

Site 8141 – Market Harborough

3.43 This site has been assessed as being of High Sensitivity due to its Key Receptor score. The site is partially located within a LWS (<5%) and Wildlife Corridor, and a small percentage of priority habitat and SSSI is within 1km. The site also comprises a small percentage (<1%) of a GI designated site. GCN, common pipistrelle and brown long-eared bats, and badger records have been identified in the relevant search distances. In addition, the site lies in a GCN Amber Zone for District Level Licensing. Consideration will be required for the potential presence of protected species including species surveys and mitigation.

Site 12231 – Market Harborough

3.44 This site has been assessed as being of High Sensitivity due to its Key Receptor score. The site partially overlaps with a LWS (<5%) and Wildlife Corridor, and a substantial percentage of the site (>70%) is within a flood zone. In addition, a small percentage of priority habitat is within 250m of the site. A record of a swift, a local priority species, was noted on site and several records of protected species were recorded within 250m including kingfisher, peregrine falcon, otter, hobby, osprey, multiple bat species and barn owl. Further consideration may be required in proposals if protected species are present on site. This would include additional surveys and mitigation. The site is in an area considered to be at higher risk of climate change impacts and proposals should also seek to ameliorate these risks.

Moderate to High Sensitivity Sites

3.45 Table 3.2 summarises sites with Moderate to High Sensitivity, of which there are 8 identified. The scoring for these sites has been driven by a number of factors. These include the presence of LWS and priority habitat in lower percentages on site and in close proximity as well as alignment with flood risks zones, Wildlife Corridors and areas deemed more susceptible to climate change risks.

Table 3.2 Moderate to High Sensitivity sites

LUC Ref	Site	Key Receptor score	Strategic Significance score	BNG Suitability score	Ecological Networks and Opportunities score
LUC_15	8090	0.31	0.08	0.10	0.18
LUC_19	8143	0.25	0.44	0.30	0.32
LUC_21	8104	0.27	0.44	0.30	0.23
LUC_29	10491	0.29	0.42	0.40	0.32
LUC_44	8252	0.25	0.22	0.10	0.50
LUC_73	8168	0.17	0.42	0.30	0.45
LUC_90	8627	0.33	0.25	0.00	0.32
LUC_99	10433	0.31	0.28	0.10	0.36

Site 8090 - Land east of Beeby Road

3.46 This site has been assessed as being of Moderate to High Sensitivity due to its Key Receptor score. Several designated sites are within close proximity, and deciduous woodland, a priority habitat, has been recorded on site. As a result, it could be an important site in the local ecological network and it could make it challenging to achieve BNG requirements on site. Records of badger activity identified in the relevant search radius. As they are protected species, if they are found to be present on site, significant mitigation could be required. Multiple bat species have been recorded within 250m, and similar considerations may be taken due to the protected status of bats. Furthermore, the site lies within the GCN Amber Zone for District Level Licensing. The potential presence of protected species could prompt further associated species surveys and mitigation measures. The site is also considered to be in an area subject to a higher risk of climate change impacts. As a result, proposals should consider the potential impacts of climate change and how to ameliorate the risk.

Site 8143 - Land east of Leicester Rd and south of Grand Union canal

3.47 This site has been assessed as being of Moderate to High Sensitivity due to its Strategic Significance score, though the site also has moderate scores for Key Receptors and BNG Suitability. This is due to the presence of a small amount (<5%) of deciduous woodland on site and the challenges associated with the potential loss and offsetting of this feature to fulfil BNG requirements as well as the location of the site being within a Wildlife Corridor. Additionally, multiple GCN, and other amphibian species, records have been identified within the site, and within 250m, and it is also located in the Amber Risk Zone for District Level Licensing. Consideration to the local amphibian population will be required within proposals for this site, not only the individuals themselves, but due to the number of records, the likely high suitability of habitat on site for supporting these populations. Further survey and mitigation is likely required. Records of badger activity identified in the relevant search radius. As they are protected species, if they are found to be present on site, significant mitigation could be required. The site is considered to be in an area subject to a higher risk of climate change impacts. As a result, proposals should consider the potential impacts of climate change and how to ameliorate the risk.

Site 8104 - Land at M1 Junction 20/Swinford Road

3.48 This site has been assessed as being of Moderate to High Sensitivity due to its Strategic Significance score, though the site also has moderate scores for Key Receptors and BNG Suitability. Despite not being in close proximity to many key receptors, it has some deciduous woodland, a priority habitat, on site. It is also located partially in the flood zone and in a Wildlife Corridor. As a result, this could make it challenging to achieve BNG requirements on-site. Records of common pipistrelle bat, barn owl and of badger activity have been identified in the relevant search radius. Due to the presence of broadleaved woodland on site, potential for roosting bats and barn owls should be considered as well as whether the site contains suitable habitat that would support foraging for these species. The site is considered to be in an area subject to a higher risk of climate change impacts as well as an area with lower access to natural greenspace. As a result, proposals should consider the potential impacts of climate change and how to ameliorate the risk as well as provision of natural greenspace accessible to residents.

Site 10491 - Moorbarns Farm

3.49 This site has been assessed as being of Moderate to High Sensitivity due to its Strategic Significance score, though the site also has moderate scores for Key Receptors and BNG Suitability. Despite not being in close proximity to many key receptors, it has some deciduous woodland, a priority habitat,

on site. The site is also within the flood zone and a Wildlife Corridor. As a result, this could make it challenging to achieve BNG requirements on-site. Water vole, otter, multiple bat species and badger identified in the relevant search distances. Additionally, the site lies in a GCN Amber Zone for District Level Licensing. The potential presence of protected species could prompt associated species surveys and mitigation measures. Furthermore, the site is considered to be in an area subject to a higher risk of climate change impacts. As a result, proposals should consider the potential impacts of climate change and how to ameliorate the risk.

Site 8252 – Land east of Dunton Road

3.50 This site has been assessed as being of Moderate to High Sensitivity due to its Ecological Networks and Opportunities score. This is due to the presence of deciduous woodland on site as well as alignment with other strategic opportunities such as Wildlife Corridors. Records of badger activity identified in the relevant search radius. As they are protected species, if they are found to be present on site, significant mitigation could be required. Amphibian including GCN records have been identified within 250m of the site and the site lies within the Amber Zone for District Level Licensing. Consideration to the presence of the local amphibian population will be required in proposals for this site and potential mitigation required as a result. Furthermore, the site is considered to be in an area subject to a higher risk of climate change impacts as well as an area with lower access to natural greenspace. As a result, proposals should consider the potential impacts of climate change and how to ameliorate the risk as well as provision of natural greenspace accessible to residents.

Site 8168 - Land north of 54 The Ridgeway, Market Harborough

3.51 This site has been assessed as being of Moderate to High Sensitivity due to its Strategic Significance score though it also has moderate BNG suitability and Ecological Networks and Opportunities scores. It has some (<5%) deciduous woodland, a priority habitat, on site. Additionally, it is located within a Wildlife Corridor and has minor overlap with a site hosting a local GI designation as well as some of Natural England's Habitat Network areas, indicating it is suitable for nature recovery efforts. As a result, this could make it challenging to achieve BNG requirements on-site. Additionally, although presence of protected species was not recorded on site, the species records search identified hedgehog and grass snakes within 250m of the site. Consideration of this could result in requirements for associated species surveys and mitigation. The site also lies in a GCN Amber Zone for District Level Licensing and the potential presence of them could prompt further surveys and mitigation measures.

Furthermore, the site is considered to be in an area subject to a higher risk of climate change impacts. As a result, proposals should consider the potential impacts of climate change and how to ameliorate the risk.

Site 8627 - Paddock to the rear of 2 Orchard Lane

3.52 This site has been assessed as being of Moderate to High Sensitivity due to its Key Receptor score. This is caused by its location within a flood risk zone and a LNR in close proximity. Badger and multiple bat species have been recorded within the relevant search distances and consideration of this could result in requirements for associated species surveys and mitigation measures. Furthermore, the site is considered to be in an area subject to a higher risk of climate change impacts. As a result, proposals should consider the potential impacts of climate change and how to ameliorate the risk.

Site 10433 – Land south of A4303, Lutterworth

3.53 This site has been assessed as being of Moderate to High Sensitivity due to its Key Receptor score. It supports some deciduous woodland, a priority habitat, on site and is located within a flood risk zone and Wildlife Corridor. As a result, this could make it challenging to achieve BNG requirements on-site. Additionally, species records on site include otter and water vole. Records of badger activity also identified in the relevant search distance. The potential presence of these protected species could result in requirements for associated species surveys and mitigation. Furthermore, multiple bat species have been recorded within 250m and the site also lies in a GCN Amber Zone for District Level Licensing. Therefore, similar considerations may be taken due to the protected status of the species. The site is considered to be in an area subject to a higher risk of climate change impacts. As a result, proposals should consider the potential impacts of climate change and how to ameliorate the risk.

Moderate Sensitivity Sites

3.54 There are 63 sites assessed as Moderate Sensitivity, which **Table 3.3** summarises. Various factors influenced the scoring of these sites, however the presence of LWSs within close proximity was a common occurrence. Overlap with Wildlife Corridors and flood risk zones were also determining parameters, whilst many of the sites were also located in Amber Risk zones for District Level Licensing.

Table 3.3 Moderate Sensitivity sites

LUC Ref	Site	Key Receptor score	Strategic Significance score	BNG Suitability score	Ecological Networks and Opportunities score
LUC_2	8234	0.21	0.06	0.00	0.27
LUC_3	8064	0.23	0.08	0.00	0.23
LUC_4	8054	0.23	0.28	0.00	0.45
LUC_7	8151	0.25	0.28	0.00	0.41
LUC_9	8180	0.23	0.25	0.00	0.36
LUC_11	10649	0.21	0.08	0.00	0.27
LUC_25	8230	0.23	0.08	0.00	0.32
LUC_26	8055	0.21	0.06	0.00	0.09
LUC_28	10554	0.21	0.22	0.00	0.41
LUC_31	12214	0.27	0.06	0.00	0.23
LUC_33	12209	0.27	0.25	0.10	0.41
LUC_34	8088	0.23	0.22	0.00	0.32
LUC_35	8095	0.25	0.28	0.00	0.27
LUC_36	8158	0.27	0.22	0.10	0.41
LUC_37	8159	0.21	0.06	0.00	0.27

LUC Ref	Site	Key Receptor score	Strategic Significance score	BNG Suitability score	Ecological Networks and Opportunities score
LUC_38	8171	0.23	0.11	0.00	0.18
LUC_39	8187	0.21	0.11	0.00	0.18
LUC_41	8210	0.23	0.11	0.00	0.27
LUC_45	8248	0.23	0.22	0.10	0.45
LUC_46	8249	0.25	0.22	0.10	0.45
LUC_47	8250	0.25	0.22	0.10	0.45
LUC_48	8251	0.25	0.25	0.10	0.45
LUC_52	8029	0.23	0.31	0.00	0.41
LUC_59	8123	0.23	0.22	0.00	0.27
LUC_61	8136	0.21	0.11	0.00	0.32
LUC_62	8138	0.23	0.28	0.10	0.41
LUC_63	8139	0.21	0.11	0.10	0.45
LUC_65	8145	0.27	0.22	0.00	0.23
LUC_66	8146	0.23	0.06	0.00	0.27
LUC_69	8105	0.29	0.06	0.00	0.45

LUC Ref	Site	Key Receptor score	Strategic Significance score	BNG Suitability score	Ecological Networks and Opportunities score
LUC_71	8157	0.23	0.25	0.00	0.32
LUC_74	8174	0.21	0.25	0.00	0.36
LUC_76	8199	0.23	0.08	0.00	0.27
LUC_77	8207	0.21	0.19	0.00	0.32
LUC_80	8224	0.25	0.11	0.10	0.27
LUC_81	8228	0.23	0.11	0.00	0.23
LUC_84	8238	0.21	0.06	0.00	0.32
LUC_86	8245	0.23	0.28	0.00	0.27
LUC_87	8257	0.23	0.25	0.00	0.23
LUC_88	8259	0.21	0.11	0.00	0.32
LUC_91	8999	0.21	0.28	0.00	0.36
LUC_93	10248	0.21	0.25	0.00	0.18
LUC_96	10332	0.25	0.25	0.00	0.27
LUC_97	9318	0.21	0.11	0.00	0.32
LUC_98	9406	0.23	0.14	0.00	0.27

LUC Ref	Site	Key Receptor score	Strategic Significance score	BNG Suitability score	Ecological Networks and Opportunities score
LUC_100	10536	0.23	0.25	0.30	0.41
LUC_102	10508	0.23	0.25	0.00	0.45
LUC_103	10519	0.23	0.22	0.00	0.36
LUC_104	10522	0.25	0.22	0.10	0.36
LUC_107	10478	0.25	0.22	0.00	0.27
LUC_108	10240	0.23	0.19	0.00	0.23
LUC_110	10135	0.27	0.25	0.00	0.41
LUC_118	10169	0.25	0.06	0.00	0.27
LUC_119	10170	0.23	0.25	0.00	0.23
LUC_120	10680	0.23	0.25	0.00	0.23
LUC_121	12186	0.23	0.22	0.00	0.32
LUC_122	12187	0.25	0.39	0.30	0.41
LUC_124	12212	0.21	0.08	0.10	0.36
LUC_125	8019	0.21	0.06	0.00	0.14
LUC_126	0	0.27	0.39	0.10	0.41

LUC Ref	Site	Key Receptor score	Strategic Significance score	BNG Suitability score	Ecological Networks and Opportunities score
LUC_130	8094	0.19	0.29	0.10	0.41
LUC_141	12235	0.29	0.10	0.00	0.18
LUC_142	12223	0.21	0.19	0.10	0.32

Site 8234 - Land south of Gallow Field Road (mixed use)

3.55 This site has been assessed as being of Moderate Sensitivity due to its Key Receptor score. Records of badger activity identified in the relevant search radius. Grass snake and multiple bat species have been recorded on site, and within 250m. As they are protected species, if they are found to be present on site, significant mitigation could be required. Records of GCN were also identified on site and within 250m and the site lies in an Amber Zone for District Level Licensing. Therefore, the potential presence of GCNs could prompt further surveys and mitigation measures.

Site 8064 - Land east of Welford Road

3.56 This site has been assessed as being of Moderate Sensitivity due to its Key Receptor score. Records of badger activity identified in the relevant search radius. Multiple bat species have been recorded within 250m. As they are protected species, if they are found to be present on site, significant mitigation could be required. Additionally, GCN have been recorded within 250m, and the site also lies in an Amber Zone for District Level Licensing. The potential presence of GCN could prompt further surveys and mitigation measures. Furthermore, the site is considered to be in an area subject to a higher risk of climate change impacts. As a result, proposals should consider the potential impacts of climate change and how to ameliorate the risk.

Site 8054 - Land off Dingley Rd and Nether Green

3.57 This site has been assessed as being of Moderate Sensitivity due to its Key Receptor and Ecological Networks and Opportunities scores. It has multiple receptors and opportunity areas in close proximity. Multiple bat species have been recorded within 250m of the site and consideration of this could result in requirements for associated species

surveys and mitigation measures. The site also lies in a GCN Amber Zone for District Level Licensing and the potential presence of them could prompt further surveys and mitigation. Furthermore, the site is considered to be in an area subject to a higher risk of climate change impacts. As a result, proposals should consider the potential impacts of climate change and how to ameliorate the risk.

Site 8151 - Land north of Dingley Road

3.58 This site has been assessed as being of Moderate Sensitivity due to its Key Receptor and Ecological Networks and Opportunities scores. It has multiple receptors and opportunity areas in close proximity and is within the flood risk zone. Multiple bat species have been recorded within 250m of the site and consideration of this could result in requirements for associated species surveys and mitigation measures. The site also lies in a GCN Amber Zone for District Level Licensing and the potential presence of them could prompt further surveys and mitigation. Furthermore, the site is considered to be in an area subject to a higher risk of climate change impacts. As a result, proposals should consider the potential impacts of climate change and how to ameliorate the risk.

Site 8180 - Land north of Ashby Road

3.59 This site has been assessed as being of Moderate Sensitivity due to its Key Receptor score. A LWS is within close proximity and it lies within a Wildlife Corridor. Additionally, GCN have been recorded within 250m, and the site also lies in an Amber Zone for District Level Licensing. The potential presence of GCN could prompt further surveys and mitigation measures. The site is considered to be in an area subject to a higher risk of climate change impacts as well as an area with lower access to natural greenspace. As a result, proposals should consider the potential impacts of climate change and how to ameliorate the risk as well as provision of natural greenspace accessible to residents.

Site 10649 - Land south of Ashby Road

3.60 This site has been assessed as being of Moderate Sensitivity due to its Key Receptor score. The site lies in a GCN Amber Zone for District Level Licensing. The potential presence of GCN could prompt associated species surveys and mitigation measures. Furthermore, the site is considered to be in an area with lower access to natural greenspace. As a result, proposals should consider the provision of natural greenspace accessible to residents.

Site 8230 - Land to the North of London Rd and east of Leicester Grammar School

3.61 This site has been assessed as being of Moderate Sensitivity due to its Key Receptor score. Records of badger

activity identified in the relevant search radius. Water vole have been recorded on site and within 250m. As they are protected species, if they are found to be present on site, significant mitigation could be required. Additionally, GCN have been recorded on site and within 250m, and the site also lies in an Amber Zone for District Level Licensing. Given the presence of multiple species reliant on the aquatic environment, and despite not being in the flood risk zone, this site could support wetland habitats, making BNG requirements potentially challenging to meet. The potential presence of GCN could prompt further surveys and mitigation measures. Additionally, multiple bat species have been recorded within 250m of the site and similar considerations may be taken due to the protected status of bats. Furthermore, the site is considered to be in an area subject to a higher risk of climate change impacts. As a result, proposals should consider the potential impacts of climate change and how to ameliorate the risk.

Site 8055 - Land to the west of the Longgrey

3.62 This site has been assessed as being of Moderate Sensitivity due to its Key Receptor score, resulting primarily from the presence of a LWS near the site. Multiple bat species have been recorded within 250m of the site. As they are protected species, if they are found to be present on site, significant mitigation could be required. The site also lies in a GCN Amber Zone for District Level Licensing. The potential presence of GCN could prompt further surveys and mitigation measures.

Site 10554 – Land off Frolesworth Road

3.63 This site has been assessed as being of Moderate Sensitivity due to its Key Receptor and Ecological Networks and Opportunities scores. The site is in close proximity to multiple receptors and opportunity areas, including a living landscape, potentially inferring its value as part of the local ecological network. Barn owl and common pipistrelle have been recorded on site, and within 250m. As they are protected species, if they are found to be present on site, significant mitigation could be required. The site also lies in a GCN Amber Zone for District Level Licensing and the potential presence of them could prompt further surveys and mitigation measures. Furthermore, the site is considered to be in an area subject to a higher risk of climate change impacts. As a result, proposals should consider the potential impacts of climate change and how to ameliorate the risk.

Site 12214 - Land south of Covert Lane

3.64 This site has been assessed as being of Moderate Sensitivity due to its Key Receptor score. It is located in close proximity to a LWS and records of badger activity identified in the relevant search radius.. As they are protected species, if

they are found to be present on site, significant mitigation could be required. The site also lies in a GCN Amber Zone for District Level Licensing. The potential presence of GCN could prompt further surveys and mitigation measures. Furthermore, the site is considered to be in an area subject to a higher risk of climate change impacts. As a result, proposals should consider the potential impacts of climate change and how to ameliorate the risk.

Site 12209 - Land south of Dunton Road

3.65 This site has been assessed as being of Moderate Sensitivity due to its Key Receptor score. It is in close proximity to multiple receptors and areas identified in strategic plans, inferring its potential value as part of the local ecological network. It also has some deciduous woodland and traditional orchard, both priority habitats, on site. As a result, this could make it challenging to achieve BNG requirements on site if proposals included direct impacts to these habitats. Records of badger activity identified in the relevant search radius. There are peregrine falcon records for the site, and within 250m. Both are protected species that, if present on site, could require significant mitigation. Additionally, the site lies within the GCN Amber Zone for District Level Licensing. The potential presence of protected species could prompt further associated species surveys and mitigation measures. The site is also considered to be in an area subject to a higher risk of climate change impacts. As a result, proposals should consider the potential impacts of climate change and how to ameliorate the risk.

Site 8088 - Land to the east of Fleckney Meadows, High Street, Fleckney

3.66 This site has been assessed as being of Moderate Sensitivity due to its Key Receptor scores. It is in close proximity to multiple receptors and areas identified in strategic plans, inferring its potential value as part of the local ecological network. Additionally, there are records of hedgehog on site, and within 250m. Although hedgehogs are not a protected species, there may be consideration required for any impact on them resulting from proposals. Multiple bat species records have been identified within 250m of the site, and their potential presence could prompt associated species surveys and mitigation measures. Furthermore, the site is considered to be in an area subject to a higher risk of climate change impacts. As a result, proposals should consider the potential impacts of climate change and how to ameliorate the risk.

Site 8095 - Land east of Leicester Road

3.67 This site has been assessed as being of Moderate Sensitivity due to its Key Receptor score. This is driven by the presence of several receptors in close proximity to site. Otter

has been recorded on site and within 250m. As they are protected species, if they are found to be present on site, species surveys and mitigation could be required. Records of badger activity identified in the relevant search radius. Additionally, bats have been recorded within 250m of the site and similar considerations may be taken due to the protected status of these species. GCN was also recorded within 250m, and the site also lies in an Amber Zone for District Level Licensing. The potential presence of GCN could prompt further surveys and mitigation measures. Furthermore, the site is considered to be in an area subject to a higher risk of climate change impacts. As a result, proposals should consider the potential impacts of climate change and how to ameliorate the risk.

Site 8158 - Land off Crowfoot Way

3.68 This site has been assessed as being of Moderate Sensitivity due to its Key Receptor and Ecological Networks and Opportunities scores. It has some deciduous woodland, a priority habitat, on site and is also in close proximity to a LWS and is within or in close proximity to multiple areas identified as being of strategic importance for nature recovery. The presence of woodland on site could make it challenging to achieve BNG requirements on-site. Records of badger activity identified in the relevant search radius. If present on site, significant mitigation could be required. Multiple bat species have also been recorded within 250m, and similar considerations may be taken due to the protected status of bats. Furthermore, the site is also considered to be in an area subject to a higher risk of climate change impacts. As a result, proposals should consider the potential impacts of climate change and how to ameliorate the risk.

Site 8159 - Land off Crowfoot Way (north)

3.69 This site has been assessed as being of Moderate Sensitivity due to its Key Receptor score, resulting primarily from the presence of a LWS in close proximity. Records of badger activity identified in the relevant search radius. Common pipistrelle have been recorded within 250m of the site. As they are protected species, if they are found to be present on site, significant mitigation could be required. Furthermore, the site is considered to be in an area with lower access to natural greenspace. As a result, proposals should consider the provision of natural greenspace accessible to residents.

Site 8171 - Land south of Uppingham Road

3.70 This site has been assessed as being of Moderate Sensitivity due to its Key Receptor score, resulting primarily from the presence of a LWS in close proximity. Brown long-eared bat was recorded on site. As they are protected

species, if they are found to be present on site, significant mitigation could be required.

Site 8187 - Husbands Bosworth School Field, Land east of Welford Road

3.71 This site has been assessed as being of Moderate Sensitivity due to its Key Receptor score, resulting primarily from the presence of a LWS in close proximity. Multiple bat species have been recorded within 250m of the site. As they are protected species, if they are found to be present on site, significant mitigation could be required. The site also lies in a GCN Amber Zone for District Level Licensing. The potential presence of GCN could prompt further surveys and mitigation measures.

Site 8210 - Land north of Leicester Road

3.72 This site has been assessed as being of Moderate Sensitivity due to its Key Receptor score, resulting primarily from the presence of a LWS in close proximity. The site also lies in a GCN Amber Zone for District Level Licensing. The potential presence of GCN could prompt further surveys and mitigation measures. Furthermore, the site is considered to be in an area with lower access to natural greenspace. As a result, proposals should consider the provision of natural greenspace accessible to residents.

Site 8248 - Land east of Dunton Road (option 1)

3.73 This site has been assessed as being of Moderate Sensitivity due to its Key Receptor and Ecological Networks and Opportunities scores. It has some deciduous woodland, a priority habitat, on site as well as a LWS in close proximity. It is also located within a Wildlife Corridor. As a result, this could make it challenging to achieve BNG requirements on-site. Amphibian including GCN records have also been identified within 250m of the site and the site lies within the Amber Zone for District Level Licensing. Consideration to the presence of the local amphibian population will be required in proposals for this site and potential mitigation required as a result. Furthermore, the site is considered to be in an area subject to a higher risk of climate change impacts as well as an area with lower access to natural greenspace. As a result, proposals should consider the potential impacts of climate change and how to ameliorate the risk as well as provision of natural greenspace accessible to residents.

Site 8249 - Land east of Dunton Road (option 2)

3.74 This site has been assessed as being of Moderate Sensitivity due to its Key Receptor and Ecological Networks and Opportunities scores. It has some deciduous woodland, a priority habitat, on site as well as a LWS in close proximity. It is also located within a Wildlife Corridor. As a result, this could

make it challenging to achieve BNG requirements on-site. Amphibian including GCN records have also been identified within 250m of the site and the site lies within the Amber Zone for District Level Licensing. Consideration to the presence of the local amphibian population will be required in proposals for this site and potential mitigation required as a result. Furthermore, the site is considered to be in an area subject to a higher risk of climate change impacts as well as an area with lower access to natural greenspace. As a result, proposals should consider the potential impacts of climate change and how to ameliorate the risk as well as provision of natural greenspace accessible to residents.

Site 8250 - Land east of Dunton Road (option 4)

3.75 This site has been assessed as being of Moderate Sensitivity due to its Key Receptor and Ecological Networks and Opportunities scores. It has some deciduous woodland, a priority habitat, on site as well as a LWS in close proximity. It is also located within a Wildlife Corridor. As a result, this could make it challenging to achieve BNG requirements on-site. Amphibian including GCN records have also been identified within 250m of the site and the site lies within the Amber Zone for District Level Licensing. Consideration to the presence of the local amphibian population will be required in proposals for this site and potential mitigation required as a result. Furthermore, the site is considered to be in an area subject to a higher risk of climate change impacts as well as an area with lower access to natural greenspace. As a result, proposals should consider the potential impacts of climate change and how to ameliorate the risk as well as provision of natural greenspace accessible to residents.

Site 8251 - Land east of Dunton Road (option 3)

3.76 This site has been assessed as being of Moderate Sensitivity due to its Key Receptor and Ecological Networks and Opportunities scores. It has some deciduous woodland, a priority habitat, on site as well as a LWS in close proximity. It is also located within a Wildlife Corridor. As a result, this could make it challenging to achieve BNG requirements on-site. Amphibian including GCN records have also been identified within 250m of the site and the site lies within the Amber Zone for District Level Licensing. Consideration to the presence of the local amphibian population will be required in proposals for this site and potential mitigation required as a result. Furthermore, the site is considered to be in an area subject to a higher risk of climate change impacts as well as an area with lower access to natural greenspace. As a result, proposals should consider the potential impacts of climate change and how to ameliorate the risk as well as provision of natural greenspace accessible to residents.

Site 8029 – Land west of Langton Road

3.77 This site has been assessed as being of Moderate Sensitivity due to its Key Receptor and Ecological Networks and Opportunities scores. It is located within and in close proximity to several areas identified as being of strategic importance for nature recovery. Multiple bat species have been recorded within 250m of the site and consideration of this could result in requirements for associated species surveys and mitigation measures. The site also lies in a GCN Amber Zone for District Level Licensing and the potential presence of them could prompt further surveys and mitigation. Furthermore, the site received a biodiversity quality assessment score of 5, indicating the local landscape's potential ecological value.

Site 8123 - Land at Wentworth Close

3.78 This site has been assessed as being of Moderate Sensitivity due to its Key Receptor score. It is located in close proximity to a LWS and is within a Wildlife Corridor and the flood risk zones. Common pipistrelle bat has been recorded on site, and within 250m. As they are protected species, if they are found to be present on site, species surveys and mitigation could be required. Furthermore, the site is considered to be in an area subject to a higher risk of climate change impacts. As a result, proposals should consider the potential impacts of climate change and how to ameliorate the risk.

Site 8136 - Land off Moorbarns Lane

3.79 This site has been assessed as being of Moderate Sensitivity due to its Key Receptor score. The site lies in a GCN Amber Zone for District Level Licensing. The potential presence of GCN could prompt further surveys and mitigation measures. Furthermore, the site is considered to be in an area subject to a higher risk of climate change impacts as well as an area with lower access to natural greenspace. As a result, proposals should consider the potential impacts of climate change and how to ameliorate the risk as well as provision of natural greenspace accessible to residents.

Site 8138 - Land (east of) off Manor Road

3.80 This site has been assessed as being of Moderate Sensitivity due to its Key Receptor and Ecological Networks and Opportunities scores. It has some deciduous woodland, a priority habitat, on site and is in close proximity to a LWS as well as being within a Wildlife Corridor. As a result, this could make it challenging to achieve BNG requirements on-site. There are no records of protected species on site, however Records of badger activity identified in the relevant search radius. Common pipistrelle records have been identified within 250m of the site. The potential presence of protected species

could prompt associated species surveys and mitigation measures. Additionally, the site lies within the GCN Amber Zone for District Level Licensing, and therefore, similar considerations may be made. Furthermore, the site is considered to be in an area subject to a higher risk of climate change impacts as well as an area with lower access to natural greenspace. As a result, proposals should consider the potential impacts of climate change and how to ameliorate the risk as well as provision of natural greenspace accessible to residents.

Site 8139 - Land at Bruntingthorpe

3.81 This site has been assessed as being of Moderate Sensitivity due to its Key Receptor and Ecological Networks and Opportunities scores. It has some deciduous woodland, a priority habitat, on site. As a result, this could make it challenging to achieve BNG requirements on-site. Additionally, there are records of hedgehog on site, and within 250m. Although hedgehogs are not a protected species, there may be consideration required for any impact on them. Multiple bat species records have been identified within 250m of the site, and the site lies within the GCN Amber Zone for District Level Licensing. Both bats and GCN are protected, and their potential presence could prompt associated species surveys and mitigation measures. Furthermore, the site is considered to be in an area subject to a higher risk of climate change impacts as well as an area with lower access to natural greenspace. As a result, proposals should consider the potential impacts of climate change and how to ameliorate the risk as well as provision of natural greenspace accessible to residents.

Site 8145 - Land at Birdie Close

3.82 This site has been assessed as being of Moderate Sensitivity due to its Key Receptor score. It is within a Wildlife Corridor and the flood risk zones. Multiple bat species have been recorded within 250m of the site. As they are protected species, if they are found to be present on site, species surveys and mitigation could be required. Furthermore, the site is considered to be in an area subject to a higher risk of climate change impacts. As a result, proposals should consider the potential impacts of climate change and how to ameliorate the risk.

Site 8146 - Land south of Mill Lane

3.83 This site has been assessed as being of Moderate Sensitivity due to its Key Receptor score. A LWS is located in close proximity to site. GCN have also been recorded within 250m, and the site lies in an Amber Zone for District Level Licensing. The potential presence of GCN could prompt further surveys and mitigation measures. Furthermore, the site is considered to be in an area with lower access to natural

greenspace. As a result, proposals should consider the provision of natural greenspace accessible to residents.

Site 8105 – Warren Farm (West)

3.84 This site has been assessed as being of Moderate Sensitivity due to its Key Receptor and Ecological Networks and Opportunities scores. Ancient woodland is found within close proximity to site, whilst multiple bat species have been recorded on site, and within 250m. Records of badger activity identified in the relevant search radius. As they are protected species, if they are found to be present on site, significant mitigation could be required. Additionally, GCN have been recorded on site and within 250m, and the site also lies in an Amber Zone for District Level Licensing. Therefore, the potential presence of GCN could prompt further surveys and mitigation measures. The site is considered to be in an area subject to a higher risk of climate change impacts as well as an area with lower access to natural greenspace. As a result, proposals should consider the potential impacts of climate change and how to ameliorate the risk as well as provision of natural greenspace accessible to residents.

Site 8157 - Land south west of Braybrooke Road

3.85 This site has been assessed as being of Moderate Sensitivity due to its Key Receptor score. It is within a Wildlife Corridor and the flood risk zones. Records of badger activity identified in the relevant search radius. As they are protected species, if they are found to be present on site, species surveys and mitigation could be required. The site also lies in a GCN Amber Zone for District Level Licensing. The potential presence of GCN could prompt further surveys and mitigation measures. Furthermore, the site is considered to be in an area subject to a higher risk of climate change impacts. As a result, proposals should consider the potential impacts of climate change and how to ameliorate the risk.

Site 8174 - land off Burton Way, Fleckney

3.86 This site has been assessed as being of Moderate Sensitivity due to its Key Receptor score. Brown long-eared bat and common pipistrelle have been recorded within 250m of the site. As they are protected species, if they are found to be present on site, species surveys and mitigation could be required. Furthermore, the site is considered to be in an area subject to a higher risk of climate change impacts. As a result, proposals should consider the potential impacts of climate change and how to ameliorate the risk.

Site 8199 - Land off Carlton Road

3.87 This site has been assessed as being of Moderate Sensitivity due to its Key Receptor score. The site lies in close proximity to a LWS and in an Amber Zone for District Level

Licensing. The potential presence of GCN could prompt further surveys and mitigation measures. Furthermore, the site is considered to be in an area subject to a higher risk of climate change impacts. As a result, proposals should consider the potential impacts of climate change and how to ameliorate the risk.

Site 8207 - Land south of Braybrook Road

3.88 This site has been assessed as being of Moderate Sensitivity due to its Key Receptor score. It is within a Wildlife Corridor and the flood risk zones. Records of badger activity identified in the relevant search radius. As they are protected species, if they are found to be present on site, species surveys and mitigation could be required. The site also lies in a GCN Amber Zone for District Level Licensing. The potential presence of GCN could prompt further surveys and mitigation measures.

Site 8224 - Land off Fleckney Road

3.89 This site has been assessed as being of Moderate Sensitivity due to its Key Receptor score. It has some deciduous woodland, a priority habitat, on site and a LWS in close proximity. As a result, this could make it challenging to achieve BNG requirements on-site. Although presence of protected species was not recorded on site, the species records search identified multiple bat species within 250m of the site. As these are protected species, their potential presence could prompt associated species surveys and mitigation measures. Furthermore, the site lies in a GCN Amber Zone for District Level Licensing. GCNs are also protected species and therefore similar considerations will be made. Additionally, the site is considered to be in an area subject to a higher risk of climate change impacts. As a result, proposals should consider the potential impacts of climate change and how to ameliorate the risk.

Site 8228 - Land north of Hall Lane (part of site24/ 12179)

3.90 This site has been assessed as being of Moderate Sensitivity due to its Key Receptor score due to the proximity of a LWS. GCN have been recorded on site and within 250m, and the site also lies in an Amber Zone for District Level Licensing. The potential presence of them could prompt associated species surveys and mitigation measures. Brown long-eared bat and common pipistrelle have also been recorded within 250m of the site and similar considerations may be taken due to their protected status.

Site 8238 - land west of Leicester Road

3.91 This site has been assessed as being of Moderate Sensitivity due to its Key Receptor score due to the proximity of a LWS. Brown long-eared bat have been recorded within

250m of the site. As they are protected species, if they are found to be present on site, species surveys and mitigation could be required. The site also lies in an Amber Zone for District Level Licensing. The potential presence of GCN could prompt further surveys and mitigation measures. Furthermore, the site is considered to be in an area subject to a higher risk of climate change impacts. As a result, proposals should consider the potential impacts of climate change and how to ameliorate the risk.

Site 8245 - Land off Hall Road

3.92 This site has been assessed as being of Moderate Sensitivity due to its Key Receptor score due to the proximity of a LWS and its location within a Wildlife Corridor. GCN have been recorded on site and within 250m, and the site also lies in an Amber Zone for District Level Licensing. The potential presence of them could prompt associated species surveys and mitigation measures. Brown long-eared bat and common pipistrelle have also been recorded within 250m of the site and similar considerations may be taken due to their protected status.

Site 8257 - Land at Little Bowden

3.93 This site has been assessed as being of Moderate Sensitivity due to its Key Receptor score due to the proximity of a LWS, as well as its location within a Wildlife Corridor and a flood risk zone. Records of badger activity identified in the relevant search radius. As they are protected species, if they are found to be present on site, species surveys and mitigation could be required. Additionally, GCN have been recorded within 250m, and the site also lies in an Amber Zone for District Level Licensing. The potential presence of them could prompt associated species surveys and mitigation measures.

Site 8259 - Land at Honeyplot Lane

3.94 This site has been assessed as being of Moderate Sensitivity due to its Key Receptor score, resulting primarily from the presence of a LWS near the site. Records of badger activity identified in the relevant search radius. Multiple bat species have been recorded within 250m. As they are protected species, if they are found to be present on site, species surveys and mitigation could be required. The site also lies in a GCN Amber Zone for District Level Licensing. The potential presence of GCN could prompt further surveys and mitigation measures. Furthermore, the site is considered to be in an area subject to a higher risk of climate change impacts. As a result, proposals should consider the potential impacts of climate change and how to ameliorate the risk.

Site 8999 - Land North West Theddingworth Road

3.95 This site has been assessed as being of Moderate Sensitivity due to its Key Receptor score, resulting primarily from the presence of a LWS near the site, as well as its location within a Wildlife Corridor. Records of badger activity identified in the relevant search radius. As they are protected species, if they are found to be present on site, species surveys and mitigation could be required. Multiple bat species have also been recorded within 250m of the site and similar considerations may be taken due to their protected status. The site also lies in a GCN Amber Zone for District Level Licensing. The potential presence of GCN could prompt further surveys and mitigation measures. Furthermore, the site is considered to be in an area subject to a higher risk of climate change impacts. As a result, proposals should consider the potential impacts of climate change and how to ameliorate the risk.

Site 10248 - Land east of Northampton Road, north of Harborough Enterprise Centre

3.96 This site has been assessed as being of Moderate Sensitivity due to its Key Receptor score. It is located in close proximity to a LWS and is also within several areas identified as being of significance for nature recovery. Additionally, the site lies in a GCN Amber Zone for District Level Licensing. The potential presence of them could prompt associated species surveys and mitigation measures.

Site 10332 - Land off Moorbarns Road

3.97 This site has been assessed as being of Moderate Sensitivity due to its Key Receptor score due to its location within a Wildlife Corridor and a flood risk zone. Water voles and otter have been recorded on site and within 250m, confirming the presence of a watercourse. These features could cause BNG requirements to be challenging to achieve. As there are protected species found to be present on site, mitigation could be required. Furthermore, the site is considered to be in an area subject to a higher risk of climate change impacts. As a result, proposals should consider the potential impacts of climate change and how to ameliorate the risk.

Site 9318 - Land to the west of Moorbarns Lane (housing)

3.98 This site has been assessed as being of Moderate Sensitivity due to its Key Receptor score due to its proximity to a LWS. The site also lies in a GCN Amber Zone for District Level Licensing. The potential presence of them could prompt associated species surveys and mitigation measures. Furthermore, The site is considered to be in an area subject to a higher risk of climate change impacts as well as an area with lower access to natural greenspace. As a result, proposals

should consider the potential impacts of climate change and how to ameliorate the risk as well as provision of natural greenspace accessible to residents.

Site 9406 - Land at Bell Lane/Kilworth Road

3.99 This site has been assessed as being of Moderate Sensitivity due to its Key Receptor score due to its proximity to a LWS. Multiple bat species have been recorded within 250m. As they are protected species, if they are found to be present on site, species surveys and mitigation could be required. The site also lies in a GCN Amber Zone for District Level Licensing. The potential presence of GCN could prompt further surveys and mitigation measures. Furthermore, the site received a biodiversity quality assessment score of 5, indicating the local landscape's potential ecological value.

Site 10536 - Land north of Catthorpe Interchange

3.100 This site has been assessed as being of Moderate Sensitivity due to its Key Receptor and BNG suitability scores. There is deciduous woodland, a priority habitat, recorded on site. As a result, this could make it challenging to achieve BNG requirements on-site. Records of badger activity identified in the relevant search radius. Similar to badgers, bats hold protected status and multiple bat species have been recorded on site, and within 250m. Due to the presence of broadleaved woodland on site, potential for roosting bats should be considered as well as whether the site contains suitable habitat that would support foraging for these species. Furthermore, amphibians including GCN records have been recorded on site and within 250m, and the site lies within the Amber Zone for District Level Licensing. Consideration to the presence of the local amphibian population will be required in proposals for this site and potential mitigation required as a result. The site is considered to be in an area subject to a higher risk of climate change impacts as well as an area with lower access to natural greenspace. As a result, proposals should consider the potential impacts of climate change and how to ameliorate the risk as well as provision of natural greenspace accessible to residents.

Site 10508 - Land to the south of Station Road

3.101 This site has been assessed as being of Moderate Sensitivity due to its Key Receptor and Ecological Networks and Opportunities scores. Several different site designations are within 1km of the site, whilst it is also located within flood risk zones and other areas identified as being of strategic importance for nature recovery. Furthermore, the site is considered to be in an area subject to a higher risk of climate change impacts. As a result, proposals should consider the potential impacts of climate change and how to ameliorate the risk.

Site 10519 - Land north of Wistow Road

3.102 This site has been assessed as being of Moderate Sensitivity due to its Key Receptor score due to its proximity to a LWS. It is also located within a Wildlife Corridor. Additionally, brown long-eared bat has been recorded within 250m of the site. As they are protected species, if they are found to be present on site, species surveys and mitigation could be required. The site also lies in a GCN Amber Zone for District Level Licensing. The potential presence of them could prompt associated species surveys and mitigation measures. Furthermore, the site is considered to be in an area subject to a higher risk of climate change impacts. As a result, proposals should consider the potential impacts of climate change and how to ameliorate the risk.

Site 10522 - Land off Rugby Road

3.103 This site has been assessed as being of Moderate Sensitivity due to its Key Receptor score due to its proximity to a LWS, the presence of priority habitat on site and its location with flood risk zones. It is also located within a Wildlife Corridor. Deciduous woodland, a priority habitat, has been recorded on site. As a result, this could make it challenging to achieve BNG requirements on-site. There are no records of protected species on site, however common toad, a biodiversity priority species, is recorded on site and within 250m. Furthermore, the site is considered to be in an area subject to a higher risk of climate change impacts. As a result, proposals should consider the potential impacts of climate change and how to ameliorate the risk.

Site 10478 - Land at Wentworth Close

3.104 This site has been assessed as being of Moderate Sensitivity due to its Key Receptor score due to its proximity to a LWS, and its location with flood risk zones. It is also located within a Wildlife Corridor. Common pipistrelle has been recorded on site and within 250m of the site. As they are protected species, if they are found to be present on site, species surveys and mitigation could be required. Furthermore, the site is considered to be in an area subject to a higher risk of climate change impacts. As a result, proposals should consider the potential impacts of climate change and how to ameliorate the risk.

Site 10240 - St Marys Road, Market Harborough

3.105 This site has been assessed as being of Moderate Sensitivity due to its Key Receptor score due to its proximity to a LWS. It is also located within a Wildlife Corridor. Multiple bat species have been recorded within 250m of the site. As they are protected species, if they are found to be present on site, species surveys and mitigation could be required.

Site 10135 - Land south of Coventry Road

3.106 This site has been assessed as being of Moderate Sensitivity due to its Key Receptor and Ecological Networks and Opportunities scores. It is within close proximity to a LWS and is within a living landscape, which potentially infers its value as part of the local ecological network. Records of badger activity identified in the relevant search radius. Multiple bat species have been recorded on site, and within 250m. As they are protected species, if they are found to be present on site, significant mitigation could be required. Additionally, GCN have been recorded within 250m, and the site also lies in an Amber Zone for District Level Licensing. Therefore, the potential presence of GCN could prompt further surveys and mitigation measures. The site is considered to be in an area subject to a higher risk of climate change impacts as well as an area with lower access to natural greenspace. As a result, proposals should consider the potential impacts of climate change and how to ameliorate the risk as well as provision of natural greenspace accessible to residents.

Site 10169 - Land north and south of Covert Lane

3.107 This site has been assessed as being of Moderate Sensitivity due to its Key Receptor score mainly as a result of the proximity of a LWS. GCNs were recorded on site and within 250m, and the site lies in an Amber Zone for District Level Licensing. The potential presence of them could prompt associated species surveys and mitigation measures. Furthermore, the site is considered to be in an area subject to a higher risk of climate change impacts. As a result, proposals should consider the potential impacts of climate change and how to ameliorate the risk.

Site 10170 - Land to the south of Braybrooke Road

3.108 This site has been assessed as being of Moderate Sensitivity due to its Key Receptor score mainly due to its proximity to a LWS but the site is also within a flood risk zone and a Wildlife Corridor. The site also lies in a GCN Amber Zone for District Level Licensing. The potential presence of them could prompt associated species surveys and mitigation measures.

Site 10680 - Land to the east of Dunmore Road

3.109 This site has been assessed as being of Moderate Sensitivity due to its Key Receptor score mainly due to its proximity to a LWS but the site is also within a flood risk zone and a Wildlife Corridor. Records of badger activity identified in the relevant search radius. As they are protected species, if they are found to be present on site, species surveys and mitigation could be required. The site also lies in a GCN Amber Zone for District Level Licensing. The potential

presence of them could prompt associated species surveys and mitigation measures.

Site 12186 - Land to the north of Wistow Road

3.110 This site has been assessed as being of Moderate Sensitivity due to its Key Receptor score mainly due to its proximity to a LWS but the site is also within a Wildlife Corridor. The site lies in a GCN Amber Zone for District Level Licensing. The potential presence of them could prompt associated species surveys and mitigation measures. Furthermore, the site is considered to be in an area subject to a higher risk of climate change impacts. As a result, proposals should consider the potential impacts of climate change and how to ameliorate the risk.

Site 12187 - Land north of Wistow Road and west of A6

3.111 This site has been assessed as being of Moderate Sensitivity due to its Key Receptor, Strategic Significance, BNG Suitability and Ecological Networks and Opportunities scores. Deciduous woodland, a priority habitat, has been recorded on site and it is located within a Wildlife Corridor. As a result, this could make it challenging to achieve BNG requirements on-site. Additionally, although presence of protected species was not recorded on site, the species records search identified brown long-eared bat and hedgehog within 250m of the site. The site also lies in a GCN Amber Zone for District Level Licensing. The potential presence of protected or important species could prompt associated species surveys and mitigation measures. Furthermore, the site is considered to be in an area subject to a higher risk of climate change impacts. As a result, proposals should consider the potential impacts of climate change and how to ameliorate the risk.

Site 12212 - Land east of A6

3.112 This site has been assessed as being of Moderate Sensitivity due to Key Receptor score. The site is in close proximity to various non-statutory designations. It also has some deciduous woodland, a priority habitat, on site. As a result, this could make it challenging to achieve BNG requirements on-site. GCN records have also been identified within 250m of the site and the site lies within the Amber Zone for District Level Licensing. Consideration to the presence of the local GCN population will be required in proposals for this site and potential mitigation required as a result. Furthermore, the site is considered to be in an area subject to a higher risk of climate change impacts. As a result, proposals should consider the potential impacts of climate change and how to ameliorate the risk.

Site 8019 - Land west of Harborough Road

3.113 This site has been assessed as being of Moderate Sensitivity due to its Key Receptor score, primarily resulting from a LWS in close proximity. Records of badger activity identified in the relevant search radius. As they are protected species, if they are found to be present on site, species surveys and mitigation could be required. Multiple bat species have also been recorded within 250m of the site and similar considerations may be taken due to their protected status.

Site 0 (LUC_126) - Land north of Magna Park

3.114 This site has been assessed as being of Moderate Sensitivity as there is a very low percentage cover of priority habitat (<1%), the location of the site within a GCN Amber zone, location aligned with a Wildlife Corridor and within an area not satisfying ANGST criteria. Additionally, multiple species records are located within and in close proximity to site including GCN and other amphibians, and several bat species. As a result, the presence of GCN on site could be result in the requirement for additional surveys and mitigation, whilst the presence of bats roosting in trees or buildings, the potential for which is higher given the presence of woodland on site, may also trigger further surveys and mitigation.

Site 8094 – Ullesthorpe

3.115 This site has been assessed as being of Moderate Sensitivity due to its Ecological Networks and Opportunities score. The site comprises a small percentage (<1%) of deciduous woodland, a priority habitat, and aligns with a Wildlife Corridor. Protected species have been recorded within 250m of the site and include hen harrier, hobby, common pipistrelle, brown long-eared bat, kingfisher and locally important swift. In addition, the site is within a GCN Amber Zone for District Level Licensing. The potential presence of protected species could require additional surveys and mitigation measures to compensate for any impact on these species and their associated habitats. Furthermore, the site is considered to be in an area subject to a higher risk of climate change impacts as well as an area with lower access to natural greenspace. As a result, proposals should consider the potential impacts of climate change and how to ameliorate the risk as well as provision of natural greenspace accessible to residents.

Site 12235 – Thurnby and Houghton

3.116 This site has been assessed as being of Moderate Sensitivity due its Key Receptor score. The site comprises a small percentage (<1%) of priority habitat in the form of deciduous woodland. In addition, a LWS, LNR and Wildlife Corridor are present within 250m of the site. Records of badger activity identified in the relevant search radius. Multiple

bat species, barn owl and grass snake were recorded within 250m. The site also lies in a GCN Amber Zone for District Level Licencing. The potential presence of protected species could result in associated species surveys and mitigation measures.

Site 12223 – Kibworth

3.117 This site has been assessed as being of Moderate Sensitivity due its Key Receptor score. A substantial area (>40%) of deciduous woodland, a priority habitat is present on site. A LWS and Wildlife Corridor are also partially present within 250m. Protected species records include multiple bat species within 250m and the site is within a GCN Amber Zone for District Level Licencing. Records of badger activity identified in the relevant search radius. Consideration for protected species will be required if they are found to be present on site and surveys will likely be required to identify their likely presence. In addition, more than 75% of the site cover is considered to be vulnerable to the impacts of climate change and as a result, proposals should carefully consider these risks and mitigate impacts.

Low to Moderate Sensitivity Sites

3.118 Table 3.4 summarises the 26 sites with Low to Moderate Sensitivity. Most of these sites have no sensitive receptors on site, the only site that does has less than 0.01% of coverage of woodland. Some are in reasonably close proximity to other features but generally these sites shouldn't present particular ecological issues for proposals.

Table 3.4 Low to Moderate Sensitivity sites

LUC Ref	Site	Key Receptor score	Strategic Significance score	BNG Suitability score	Ecological Networks and Opportunities score
LUC_10	8206	0.13	0.08	0.00	0.18
LUC_12	10470	0.17	0.06	0.00	0.18
LUC_20	10597	0.19	0.06	0.00	0.23
LUC_50	8031	0.19	0.11	0.00	0.27

LUC Ref	Site	Key Receptor score	Strategic Significance score	BNG Suitability score	Ecological Networks and Opportunities score
LUC_51	8032	0.19	0.08	0.00	0.27
LUC_54	8047	0.15	0.11	0.00	0.18
LUC_55	8080	0.17	0.06	0.00	0.27
LUC_56	8086	0.19	0.08	0.00	0.18
LUC_58	8114	0.19	0.14	0.00	0.36
LUC_64	8144	0.19	0.06	0.00	0.32
LUC_75	8181	0.19	0.08	0.00	0.27
LUC_78	8216	0.19	0.08	0.00	0.14
LUC_82	8208	0.17	0.06	0.00	0.32
LUC_92	9005	0.15	0.11	0.00	0.36
LUC_101	10501	0.19	0.06	0.00	0.18
LUC_109	10219	0.15	0.06	0.00	0.23
LUC_114	12179	0.19	0.25	0.00	0.32
LUC_115	10175	0.19	0.25	0.10	0.36
LUC_117	10140	0.17	0.11	0.00	0.14

LUC Ref	Site	Key Receptor score	Strategic Significance score	BNG Suitability score	Ecological Networks and Opportunities score
LUC_123	12211	0.17	0.08	0.00	0.14
LUC_127	8124	0.15	0.08	0.00	0.23
LUC_129	8045	0.19	0.27	0.10	0.36
LUC_133	10249	0.08	0.19	0.00	0.18
LUC_134	10642	0.08	0.22	0.00	0.14
LUC_136	12217	0.17	0.24	0.10	0.18
LUC_137	12220	0.19	0.22	0.00	0.27

Site 8206 - Land north of Uppingham Road

3.119 This site has been assessed as being of Low to Moderate Sensitivity due to low scoring on each category, though the proximity of a LWS has resulted in its score for Key Receptor being above thresholds. The site lies in a GCN Amber Zone for District Level Licensing, and the potential presence of GCN could prompt associated species surveys and mitigation measures.

Site 10470 - Land off Kettering Road

3.120 This site has been assessed as being of Low to Moderate Sensitivity due to its Key Receptor score, resulting from its proximity to a LWS. GCN have been recorded within 250m, and the site also lies in an Amber Zone for District Level Licensing. The potential presence of GCN could prompt further surveys and mitigation measures.

Site 10597 - Land south of Gallow Field Road

3.121 This site has been assessed as being of Low to Moderate Sensitivity due to its Key Receptor score, resulting from its proximity to a LWS. Records of badger activity identified in the relevant search radius. As they are protected species, if they are found to be present on site, significant

mitigation could be required. Additionally, GCN have been recorded on site, and the site also lies in an Amber Zone for District Level Licensing. The potential presence of GCN could prompt further surveys and mitigation measures. Furthermore, multiple bat species have been recorded within 250m of the site and similar considerations may be taken due to the protected status of bats.

Site 8031 - Land off Manor Road

3.122 This site has been assessed as being of Low to Moderate Sensitivity due to its Key Receptor and Strategic Significance scores. A LWS is in close proximity and common pipistrelle have been recorded within 250m of the site. As they are protected species, if they are found to be present on site, significant mitigation could be required. The site also lies in a GCN Amber Zone for District Level Licensing. The potential presence of GCN could prompt further surveys and mitigation measures. Furthermore, the site is considered to be in an area with lower access to natural greenspace. As a result, proposals should consider the provision of natural greenspace accessible to residents.

Site 8032 - Land south of Field View

3.123 This site has been assessed as being of Low to Moderate Sensitivity due to its Key Receptor and Strategic Significance scores. A LWS is in close proximity and the site is considered to be in an area with lower access to natural greenspace. As a result, proposals should consider the provision of natural greenspace accessible to residents.

Site 8047 - South of Uppingham Road

3.124 This site has been assessed as being of Low to Moderate Sensitivity due to its Key Receptor and Strategic Significance scores. GCN was also recorded within 250m, and the site also lies in an Amber Zone for District Level Licensing. The potential presence of GCN could prompt further surveys and mitigation measures.

Site 8080 - Land north of Mill Lane

3.125 This site has been assessed as being of Low to Moderate Sensitivity due to its Key Receptor score. GCN have been recorded on site and within 250m, and the site also lies in an Amber Zone for District Level Licensing. The potential presence of them could prompt associated species surveys and mitigation measures. Multiple bat species have also been recorded within 250m of the site and similar considerations may be taken due to their protected status. Furthermore, the site is considered to be in an area with lower access to natural greenspace. As a result, proposals should consider the provision of natural greenspace accessible to residents.

Site 8086 - Land south of Kilby Road, Fleckney

3.126 This site has been assessed as being of Low to Moderate Sensitivity due to its Key Receptor score. Records of badger activity identified in the relevant search radius. As they are protected species, if they are found to be present on site, species surveys and mitigation could be required. Multiple bat species have also been recorded within 250m of the site and similar considerations may be taken due to their protected status. The site also lies in a GCN Amber Zone for District Level Licensing. The potential presence of GCN could prompt further surveys and mitigation measures. Furthermore, the site is considered to be in an area subject to a higher risk of climate change impacts. As a result, proposals should consider the potential impacts of climate change and how to ameliorate the risk.

Site 8114 - Land off Welham Lane

3.127 This site has been assessed as being of Low to Moderate Sensitivity due to its Key Receptor and Strategic Significance scores. Various non-statutory designations are within 1km. Multiple bat species have been recorded within 250m of the site. As they are protected species, if they are found to be present on site, species surveys and mitigation could be required. The site also lies in a GCN Amber Zone for District Level Licensing. The potential presence of GCN could prompt further surveys and mitigation measures. Furthermore, the site is considered to be in an area subject to a higher risk of climate change impacts. As a result, proposals should consider the potential impacts of climate change and how to ameliorate the risk. Furthermore, the site received a biodiversity quality assessment score of 5, indicating the local landscape's potential ecological value.

Site 8144 - Land north of Cottage Lane

3.128 This site has been assessed as being of Low to Moderate Sensitivity due to its Key Receptor and Ecological Networks and Opportunities scores. Multiple bat species have been recorded within 250m of the site. As they are protected species, if they are found to be present on site, species surveys and mitigation could be required. The site also lies in a GCN Amber Zone for District Level Licensing. The potential presence of GCN could prompt further surveys and mitigation measures. Furthermore, the site is considered to be in an area with lower access to natural greenspace. As a result, proposals should consider the provision of natural greenspace accessible to residents.

Site 8181 - Land west of Welford Road

3.129 This site has been assessed as being of Low to Moderate Sensitivity due to its Key Receptor score. Multiple bat species have been recorded within 250m of the site. As

they are protected species, if they are found to be present on site, species surveys and mitigation could be required. GCN have also been recorded within 250m, and the site lies in an Amber Zone for District Level Licensing. The potential presence of GCN could prompt further surveys and mitigation measures. Furthermore, the site is considered to be in an area subject to a higher risk of climate change impacts. As a result, proposals should consider the potential impacts of climate change and how to ameliorate the risk.

Site 8216 - Land south of Kilby Road

3.130 This site has been assessed as being of Low to Moderate Sensitivity due to its Key Receptor score. Multiple bat species have been recorded within 250m of the site. As they are protected species, if they are found to be present on site, species surveys and mitigation could be required. The site also lies in an Amber Zone for District Level Licensing. The potential presence of GCN could prompt further surveys and mitigation measures.

Site 8208 - land off A5, north of White House Farm

3.131 This site has been assessed as being of Low to Moderate Sensitivity due to its Key Receptor and Ecological Networks and Opportunities scores. GCN have been recorded on site and within 250m, and the site also lies in an Amber Zone for District Level Licensing. The potential presence of them could prompt associated species surveys and mitigation measures. Records of badger activity identified in the relevant search radius. Common pipistrelle have also been recorded within 250m of the site and similar considerations may be taken due to their protected status. Furthermore, the site is considered to be in an area with lower access to natural greenspace. As a result, proposals should consider the provision of natural greenspace accessible to residents.

Site 9005 - Spring Farm, Moorbarns Lane

3.132 This site has been assessed as being of Low to Moderate Sensitivity due to its Key Receptor, Strategic Significance and Ecological Networks and Opportunities scores. The site lies in a GCN Amber Zone for District Level Licensing. The potential presence of them could prompt associated species surveys and mitigation measures. Furthermore, The site is considered to be in an area subject to a higher risk of climate change impacts as well as an area with lower access to natural greenspace. As a result, proposals should consider the potential impacts of climate change and how to ameliorate the risk as well as provision of natural greenspace accessible to residents.

Site 10501 - Land adjacent to Westfield House, Leicester Road

3.133 This site has been assessed as being of Low to Moderate Sensitivity due to its Key Receptor score. Brown long-eared bat and common pipistrelle have been recorded within 250m of the site. As they are protected species, if they are found to be present on site, species surveys and mitigation could be required. The site also lies in a GCN Amber Zone for District Level Licensing. The potential presence of GCN could prompt further surveys and mitigation measures.

Site 10219 - Land to the south of Harbrough Road/South East of Kettering Road

3.134 This site has been assessed as being of Low to Moderate Sensitivity due to its Key Receptor score. Additionally, records of badger activity identified in the relevant search radius. As badgers are protected species, if they are found to be present on site, species surveys and mitigation could be required. GCNs were also recorded on site and within 250m, and the site lies in an Amber Zone for District Level Licensing. The potential presence of them could prompt associated species surveys and mitigation measures.

Site 12179 - Land to the north of Hall Lane

3.135 This site has been assessed as being of Low to Moderate Sensitivity due to its Key Receptor, Strategic Significance and Ecological Networks and Opportunities scores. The site is within a Wildlife Corridor and GCN have been recorded on site and within 250m, and the site lies in an Amber Zone for District Level Licensing. The potential presence of them could prompt associated species surveys and mitigation measures.

Site 10175 - Land to the east of Broughton Chase

3.136 This site has been assessed as being of Low to Moderate Sensitivity due to its BNG suitability score. It has a very small amount of deciduous woodland (<0.01%), a priority habitat, on site. As a result, this could make it challenging to achieve BNG requirements on-site. Furthermore, the site is considered to be in an area subject to a higher risk of climate change impacts. As a result, proposals should consider the potential impacts of climate change and how to ameliorate the risk.

Site 10140 - Land east of Fleckney Road

3.137 This site has been assessed as being of Low to Moderate Sensitivity due to its Key Receptor and Strategic Significance scores. Multiple bat species have been recorded within 250m of the site. As they are protected species, if they are found to be present on site, species surveys and

mitigation could be required. GCN have also been recorded within 250m, and the site lies in an Amber Zone for District Level Licensing. The potential presence of them could prompt associated species surveys and mitigation measures.

Site 12211 - Land north of Wayside Lodge, Covert Lane

3.138 This site has been assessed as being of Low to Moderate Sensitivity due to its Key Receptor score. GCNs were recorded on site and within 250m, and the site lies in an Amber Zone for District Level Licensing. The potential presence of them could prompt associated species surveys and mitigation measures.

Site 8124 – Kibworth

3.139 This site has been assessed as being of Low to Moderate Sensitivity due to its Key Receptor score. Priority habitat and a Wildlife Corridor are present within 250m of the site, and a small percentage of a LWS is present within 1km of the site. Records of badger activity identified in the relevant search radius. The site also lies in an Amber Zone for District Level Licensing. The potential presence of GCN could prompt further surveys and mitigation measures.

Site 8045 – Broughton Astley

3.140 This site has been assessed as being of Low to Moderate Sensitivity as a result of scoring in all categories. A small percentage (<1%) of deciduous woodland, a priority habitat, and Wildlife Corridor are present on site, and a LWS is partially present within 250m. In addition, the site is in a SSSI risk zone. Protected and priority species were recorded within 250m of the site and include peregrine falcon and locally important swift, swallow and house martin. Records of badger activity identified in the relevant search radius. Furthermore, the site is considered to be in an area subject to a higher risk of climate change impacts and proposals should include consideration to ameliorate risks.

Site 10249 – Market Harborough

3.141 This site has been assessed as being of Low to Moderate Sensitivity due to its Strategic Significance score. The site is partially located within a Wildlife Corridor. In addition, the site lies within the GCN Amber Zone for District Level Licensing. Records of badger activity identified in the relevant search radius.

Site 10642 – Kibworth

3.142 This site has been assessed as being of Low to Moderate Sensitivity due to its Strategic Significance score. The site is partially located within a Wildlife Corridor. In addition, the site lies within the GCN Amber Zone for District

Level Licencing. No protected or priority species were recorded on site or within 1km.

Site 12217 - Thurncourt

3.143 This site has been assessed as being of Low to Moderate Sensitivity due to its Key Receptor, Strategic Significance and BNG Suitability score. The site comprises a small percentage (<1%) of priority habitat in the form of deciduous woodland and is partially located within a Wildlife Corridor. In addition, a LWS is within 250m. Records of badger, a protected species, and hedgehog were recorded within 250m of the site. The site is also considered to be in an area at higher risk of climate change impacts. As a result, proposals should seek to ameliorate risks.

Site 12220 – Kibworth

3.144 This site has been assessed as being of Low to Moderate Sensitivity due to its Key Receptor and Strategic Significance score. The site is partially located within a Wildlife Corridor, and a LWS is within 250m of the site. Protected species records include marsh harrier, hobby, kingfisher, common pipistrelle and barn owl within 250m of the site and locally important swift and house martin, also within 250m. Records of badger activity identified in the relevant search radius. The potential presence of protected species could require associated species surveys and mitigation measures.

Low Sensitivity Sites

3.145 There was one site assessed as being of Low Sensitivity. This site has no sensitive receptors, and is not in close proximity to other features. It is not expected to present ecological issues for proposals.

Table 3.5 Low Sensitivity sites

LUC Ref	Site	Key Receptor score	Strategic Significance score	BNG Suitability score	Ecological Networks and Opportunities
LUC_135	12213	0.08	0.08	0.00	0.23

Site 12213 – Kibworth

3.146 This site has been assessed as being of Low Sensitivity due to a low Key Receptor, Strategic Significance and BNG Suitability score. Some Ecological Networks and Opportunities are present, including the partial presence of a Wildlife Corridor and priority habitat within 250m, and a LWS within 1km. No protected or priority species were recorded on

site or within 1km, however the site lies in a GCN Amber Zone for District Level Licencing.

Ecosystem Services

3.147All sites were assessed for their potential contributions to ecosystem services and risks strongly associated with biodiversity. This included:

- Climate change vulnerability – assessed using a national Natural England dataset,
- Flood risk – assessing alignment of sites with national Environment Agency datasets for flood risk zones 1 & 2,
- Accessible natural greenspace – using a Leicestershire study, assessing availability of natural greenspace and fulfilment of criteria within the Natural England Accessible Natural Greenspace Standards.

3.148 Tables 3.6 to 3.8 identify the sites found to be associated with these datasets.

Table 3.6 Sites identified as being highly susceptible to climate change impacts

luc_id	Site_ID	Site_Address
LUC_1	10595	Land south of Lutterworth Rd / Coventry Rd
LUC_3	8064	Land east of Welford Road
LUC_4	8054	Land off Dingley Rd and Nether Green
LUC_5	8202	Former Lorry Park Gaulby Road
LUC_7	8151	Land north of Dingley Road
LUC_8	8155	Land at Gaulby Road
LUC_9	8180	Land north of Ashby Road
LUC_13	8737	Land OS3070, Leicester Rd
LUC_14	12207	Billesdon Depot south of Gaulby Road
LUC_15	8090	Land East of Beeby Road
LUC_16	8227	Land between Scaptoft & Bushby
LUC_18	8122	East of Market Harborough Road
LUC_19	8143	Land east of Leicester Rd and south of Grand Union canal
LUC_21	8104	Land at M1 Junction 20/Swinford Road
LUC_22	8167	Land off Leicester Road, Lutterworth
LUC_23	8247	Land west of Warwick Road
LUC_24	8631	Land South of Gartree Rd & East of Oadby *

LUC_25	8230	Land to the North of London Rd and east of Leicester Grammar School
LUC_28	10554	Land off Frolesworth Road
LUC_29	10491	Moorbarns Farm
LUC_30	12222	Land west of Beeby Road (Scraptoft Golf Club), and land east and west of Hamilton Lane [Scraptoft SDA - smaller option 1]
LUC_31	12214	Land south of Covert Lane
LUC_33	12209	Land south of Dunton Road
LUC_34	8088	Land to the east of Fleckney Meadows, High Street, Fleckney
LUC_35	8095	Land East of Leicester Road
LUC_36	8158	Land off Crowfoot Way
LUC_40	8205	Land south of Bird Cage Cottage, Arnesby Road
LUC_43	8218	Land East of Frolesworth Road
LUC_44	8252	Land East of Dunton Road
LUC_45	8248	Land East of Dunton Road (option 1)
LUC_46	8249	Land East of Dunton Road (option 2)
LUC_47	8250	Land East of Dunton Road (option 4)
LUC_48	8251	Land East of Dunton Road (option 3)
LUC_49	8060	Land north east of Kibworth Harcourt
LUC_56	8086	land south of Kilby Road, Fleckney
LUC_57	8087	Land north of Kilby Road
LUC_58	8114	Land off Welham Lane
LUC_59	8123	Land at Wentworth Close
LUC_60	8134	Old Mill Road
LUC_61	8136	Land off Moorbarns Lane
LUC_62	8138	Land (East of) off Manor Road
LUC_63	8139	Land at Bruntingthorpe
LUC_65	8145	Land at Birdie Close
LUC_68	8150	Land south of A47 Uppingham Road
LUC_69	8105	Warren Farm (West)
LUC_70	8152	North and South of Gilmorton Road (Extension to Lutterworth East SDA)
LUC_71	8157	Land south west of Braybrooke Road
LUC_72	8162	Land off A6
LUC_73	8168	Land north of 54 The Ridgeway, Market Harborough

LUC_74	8174	land off Burton Way, Fleckney
LUC_75	8181	Land west of Welford Road
LUC_76	8199	Land off Carlton Road
LUC_79	8220	Land at Witham Villa
LUC_80	8224	Land off Fleckney Road
LUC_83	8236	Land North-East of Harborough Road
LUC_84	8238	land west of Leicester Road
LUC_88	8259	Land at Honeypot Lane
LUC_89	8196	Land north of Covert Lane (West)
LUC_90	8627	Paddock to the rear of 2 Orchard Lane
LUC_91	8999	Land North West Theddingworth Road
LUC_92	9005	Spring Farm, Moorbarns Lane
LUC_94	10257	Land west of Leicester Road, Lutterworth
LUC_95	10318	Land at Gilmorton Road
LUC_96	10332	Land off Moorbarns Road
LUC_97	9318	Land to the west of Moorbarns Lane (housing)
LUC_99	10433	Land south of A4303, Lutterworth
LUC_100	10536	Land north of Catthorpe Interchange
LUC_102	10508	Land to the south of Station Road
LUC_103	10519	Land north of Wistow Road
LUC_104	10522	Land off Rugby Road
LUC_105	9895	Land east of Welford Road
LUC_107	10478	Land at Wentworth Close
LUC_110	10135	Land south of Coventry Road
LUC_111	10117	Land west of Beeby Road (Scraptoft Golf Club), and land east and west of Hamilton Lane [Scraptoft SDA]
LUC_115	10175	Land to the east of Broughton Chase
LUC_116	10012	Land at Witham Villa, Broughton Road
LUC_118	10169	Land north and south of Covert Lane
LUC_121	12186	Land to the north of Wistow Road
LUC_122	12187	Land north of Wistow Road and west of A6
LUC_124	12212	Land east of A6
LUC_126	0	Land north of Magna Park
LUC_128	8093	Oadby Woodlands

LUC_129	8045	Broughton Astley
LUC_130	8094	Ullesthorpe
LUC_131	8132	Market Harborough
LUC_136	12217	Thurncourt
LUC_140	12231	Market Harborough
LUC_141	12235	Thurnby and Houghton
LUC_142	12223	Kibworth

LUC_119	10170	Land to the south of Braybrooke Road
LUC_120	10680	Land to the east of Dunmore Road
LUC_131	8132	Market Harborough
LUC_140	12231	Market Harborough

Table 3.8 Sites identified as being in areas not fulfilling ANGSt standards

Table 3.7 Sites identified as being in flood risk zones 2 and 3

luc_id	Site_ID	Site_Address
LUC_4	8054	Land off Dingley Rd and Nether Green
LUC_24	8631	Land South of Gartree Rd & East of Oadby *
LUC_29	10491	Moorbarns Farm
LUC_30	12222	Land west of Beeby Road (Scraptoft Golf Club), and land east and west of Hamilton Lane [Scraptoft SDA - smaller option 1]
LUC_32	12189	Land to the North of Great Glen
LUC_36	8158	Land off Crowfoot Way
LUC_43	8218	Land East of Frolesworth Road
LUC_59	8123	Land at Wentworth Close
LUC_60	8134	Old Mill Road
LUC_65	8145	Land at Birdie Close
LUC_70	8152	North and South of Gilmorton Road (Extension to Lutterworth East SDA)
LUC_71	8157	Land south west of Braybrooke Road
LUC_77	8207	Land south of Braybrook Road
LUC_87	8257	Land at Little Bowden
LUC_90	8627	Paddock to the rear of 2 Orchard Lane
LUC_96	10332	Land off Moorbarns Road
LUC_99	10433	Land south of A4303, Lutterworth
LUC_104	10522	Land off Rugby Road
LUC_107	10478	Land at Wentworth Close
LUC_111	10117	Land west of Beeby Road (Scraptoft Golf Club), and land east and west of Hamilton Lane [Scraptoft SDA]

luc_id	Site_ID	Site_Address
LUC_6	8135	Land north of Stretton Lane
LUC_9	8180	Land north of Ashby Road
LUC_11	10649	Land south of Ashby Road
LUC_21	8104	Land at M1 Junction 20/Swinford Road
LUC_22	8167	Land off Leicester Road, Lutterworth
LUC_37	8159	Land off Crowfoot Way (north)
LUC_41	8210	Land North of Leicester Road
LUC_42	8215	Land South of Leicester Road
LUC_44	8252	Land East of Dunton Road
LUC_45	8248	Land East of Dunton Road (option 1)
LUC_46	8249	Land East of Dunton Road (option 2)
LUC_47	8250	Land East of Dunton Road (option 4)
LUC_48	8251	Land East of Dunton Road (option 3)
LUC_50	8031	Land off Manor Road
LUC_51	8032	Land south of Field View
LUC_61	8136	Land off Moorbarns Lane
LUC_62	8138	Land (East of) off Manor Road
LUC_64	8144	Land north of Cottage Lane
LUC_79	8220	Land at Witham Villa
LUC_92	9005	Spring Farm, Moorbarns Lane
LUC_94	10257	Land west of Leicester Road, Lutterworth
LUC_97	9318	Land to the west of Moorbarns Lane (housing)
LUC_110	10135	Land south of Coventry Road
LUC_113	9355	North of Uppingham Road (east), Houghton on the Hill

LUC_116	10012	Land at Witham Villa, Broughton Road
LUC_126	0	Land north of Magna Park
LUC_130	8094	Oadby Woodlands

Chapter 4

Discussion

Site Sensitivity

4.1 This study is inherently comparative; it seeks to compare sites across the district so assessments and sensitivity ratings are based on this foundation. Additionally, as stated in the draft Local Plan, Harborough is a district with relatively few nationally designated sites (less than 2% of the area). In that context, with such a paucity of nature designations, Local Wildlife Sites are comparatively important and highly sensitive in a landscape with very few such sites and as a result, lower resilience. This assessment treats them as such with sensitivity categories assigned based on the presence of these locally designated sites amongst other factors. The sensitivity categories should not be viewed in a national context, but within a local context.

4.2 Ecological impacts are predicted to be a more significant consideration for High Sensitivity sites. Furthermore, it is likely that ecological impacts are likely to be a prominent consideration for sites assessed as Moderate to High Sensitivity. Both High and Moderate to High category sites may support multiple sensitive receptors for biodiversity as well as offering significant opportunities for the local nature recovery network, securing local gains for biodiversity and people. Where these sites are being brought forward for further consideration in the Local Plan, further surveys are recommended in order to take account of these receptors early in the design process, gather further information as to the presence of receptors on site, understand the implications for mitigation and to inform BNG assessments. Further surveys, beyond those recommended for Phase 2 of this project (**Further Surveys** section below) will be required to inform planning applications.

4.3 Sites assessed as of Moderate Sensitivity are considered to support some minor receptors and offer limited potential for enhancements aligned with local strategic plans. As a result, further surveys are not currently recommended for all Moderate sites, however surveys are likely to be necessary prior to the submission of associated planning applications.

4.4 Sites of Moderate to Low and Low Sensitivity are less likely to support significant biodiversity assets. However, they could be important as part of the fabric of the local ecological network. Additionally, access to and quality of data can be

varied, thus a lower Sensitivity rating in this study shouldn't be considered in isolation of locally gathered evidence by ecologists or other experts.

Ecosystem Services

4.5 Some of the parameters employed in the assessment can provide insight individually. These are described below in the context of the ecosystem service considerations inferred by the data layers and their overlap with the sites listed. This doesn't affect scoring but should support decision making and proposals for these sites.

Climate Change Vulnerability

4.6 It is recommended that proposals for all sites identified as being within areas subject to higher risk of impacts of climate change make consideration for how to ameliorate these risks with nature based solutions integrated within designs. The 89 sites overlapping with the Natural England Climate Change Vulnerability mapping layer are listed in **Table 3.6**. These sites could be at higher risk of the impacts of climate change but also offer greater opportunity for climate resilience.

Flood Risk

4.7 It is recommended that all proposals within flood zones 2 and 3 are subject to an appropriate risk assessment for flooding. Additionally, proposals should consider designs that incorporate enhancements and re-naturalisation to watercourse and wetland features and nature based solutions facilitating flood risk reduction on site and downstream. These 24 sites include those listed in **Table 3.7**

Accessible Natural Greenspace Standards

4.8 It is recommended that proposals for all residential developments on sites identified as not being in areas satisfying the Accessible Natural Greenspace Standards include plans for provision of areas of accessible natural greenspace. This is because the areas in which these 27 sites are located have been assessed as having insufficient accessible natural greenspace according to these standards. As noted in Chapter 2: Limitations, these standards have been succeeded by the Green Infrastructure Standards, a key component of the Green Infrastructure Framework, and further decision making could benefit from being informed by these updated standards, though local open space standards should be consulted in the first instance. These sites include those listed in **Table 3.8**.

Further Surveys

4.9 This report constitutes the findings of the first phase of this project in support of the Regulation 19 consultation. The next phase is proposed for Spring 2025 and will include surveys of sites identified below and consideration of the draft LNRS, e.g. how the LNRS may affect proposals on the sites in the study area and how the sites can best contribute toward achieving the measures identified within the strategy.

4.10 It is recommended that sites being brought forward for further consideration in the Local Plan and assessed as having High or High to Moderate Sensitivity should be subject to habitat surveys using the UK habitat classifications system assessments to further inform decision making. These surveys will:

- Provide more detailed habitat information for the sites,
- Allow for assessments to be based on ground truthed data, including the likelihood of sites supporting protected and priority species,
- Provide information to make a broad assessment of the site's potential for fulfilling BNG requirements,
- Inform recommendations for enhancements.

4.11 The 23 sites recommended for further survey are listed in **Table 4.1**.

4.12 It should be noted that any development proposal must consider the potential impact on biodiversity and how they can contribute toward legislative requirements, policy and strategic goals. This includes BNG, the adopted Local Plan, and the LNRS. Doing so at an early stage allows for constraints and opportunities to be most effectively addressed within masterplanning and design; in turn leading to efficient risk management. Biodiversity information is vital to support master-planning through to detailed design to ensure it is appropriately considered throughout the process.

4.13 Therefore, irrespective of whether sites have not been subject to recommendations for further surveys in support of the potential site allocations, it may be that surveys are required in the future and this requirement shouldn't be discounted as a result of the above recommendations.

Table 4.1 Sites recommended for further surveys

Site_ID	Site_Address	Settlement
10595	Land south of Lutterworth Rd / Coventry Rd	Lutterworth
8202	Former Lorry Park Gaulby Road	Billesdon
8135	Land north of Stretton Lane	Houghton
8155	Land at Gaulby Road	Billesdon
8737	Land OS3070, Leicester Rd	Market Harborough
12207	Billesdon Depot south of Gaulby Road	Billesdon
8090	Land at Beeby Road	Thurnby and Houghton
8227	Land between Scaptoft & Bushby	Scraptoft, Thurnby and Bushby
8241	Land north of the A47, east of Zouche Way	Scraptoft, Thurnby and Bushby
8122	East of Market Harborough Road	Market Harborough
8143	Land east of Leicester Rd and south of Grand Union canal	Market Harborough
8104	Land at M1 Junction 20/Swinford Road	Lutterworth
8167	Land off Leicester Road, Lutterworth	Lutterworth
8247	Land west of Warwick Road	Kibworth
8631	Land South of Gartree Rd & East of Oadby *	Great Glen Oadby SDA
10042	Land north of Kilby Road	Fleckney
8093	Land at Stretton Hall Farm, Chestnut Drive	Oadby Woodlands
8094	Land to the rear of South Avenue	Ullesthorpe
8132	Land south of Farndale view	Market Harborough
8141	Land North of Leicester Lane, Great Bowden	Market Harborough
12231	Commons Car Park	Market Harborough
12235	Land East of Beeby Road	Scraptoft, Thurnby and Bushby
12223	The Nurseries, Flackney Road	Kibworth

Appendix A

Leicestershire Biodiversity Action Plan Priorities

Habitats of National Importance

- Broadleaved woodland
- Calcareous grassland
- Eutrophic standing water
- Field margins
- Heath-grassland
- Hedgerows
- Lowland wood-pasture and parkland
- Mesotrophic lakes
- Neutral grassland
- Reedbed
- Wet woodland
- Rivers

Habitats of Local Importance

- Fast-flowing streams
- Floodplain wetland
- Mature trees
- Roadside verges
- Rocks and built structures
- Sphagnum ponds
- Springs and flushes
- Urban habitats

Species

- Barn Owl
- Bats
- Black hairstreak butterfly
- Black poplar
- Dingy and grizzled skipper butterflies
- Dormouse
- Nightingale

- Otter
- Purple small-reed
- Redstart
- Sand martin
- Violet helleborine
- Water vole
- White-clawed crayfish
- Wood vetch
- Swift
- Swallow
- House Martin

Appendix B
Results Table

Ecological Assessment of Proposed Site Allocations: Phase 1 Desk Study

December 2024

LUC reference	Site Reference	Address	Settlement	Key Receptors	Strategic Significance	BNG suitability	Ecological networks and Opportunities	Sensitivity
LUC_1	10595	Land south of Lutterworth Rd / Coventry Rd	Lutterworth	1.00	0.22	0.00	0.18	High
LUC_2	8234	Land south of Gallow Field Road (mixed use)	Market Harborough	0.21	0.06	0.00	0.27	Moderate
LUC_3	8064	Land east of Welford Road	Husbands Bosworth	0.23	0.08	0.00	0.23	Moderate
LUC_4	8054	Land off Dingley Rd and Nether Green	Great Bowden	0.23	0.28	0.00	0.45	Moderate
LUC_5	8202	Former Lorry Park Gaulby Road	Billesdon	1.00	0.28	0.00	0.27	High
LUC_6	8135	Land north of Stretton Lane	Houghton	1.00	0.28	0.00	0.14	High
LUC_7	8151	Land north of Dingley Road	Great Bowden	0.25	0.28	0.00	0.41	Moderate
LUC_8	8155	Land at Gaulby Road	Billesdon	1.00	0.28	0.10	0.27	High

Ecological Assessment of Proposed Site Allocations: Phase 1 Desk Study

December 2024

LUC _9	8180	Land north of Ashby Road	Ullesthorpe	0.23	0.25	0.00	0.36	Moderate
LUC _10	8206	Land north of Uppingham Road	Houghton	0.13	0.08	0.00	0.18	Low to Moderate
LUC _11	10649	Land south of Ashby Road	Ullesthorpe	0.21	0.08	0.00	0.27	Moderate
LUC _12	10470	Land off Kettering Road	Market Harborough	0.17	0.06	0.00	0.18	Low to Moderate
LUC _13	8737	Land OS3070, Leicester Rd	Market Harborough	1.00	0.44	0.00	0.18	High
LUC _14	12207	Billesdon Depot south of Gaulby Road	Billesdon	0.25	0.28	0.50	0.27	High
LUC _15	8090	Land East of Beeby Road	Scaptoft, Thurnby and Bushby	0.31	0.08	0.10	0.18	Moderate to High
LUC _16	8227	Land between Scaptoft & Bushby	Scaptoft, Thurnby and Bushby	1.00	0.22	0.00	0.27	High
LUC _17	8241	Land north of the A47, east of Zouche Way	Scaptoft, Thurnby	1.00	0.42	0.00	0.14	High

Ecological Assessment of Proposed Site Allocations: Phase 1 Desk Study

December 2024

			y and Bushby					
LUC_18	8122	East of Market Harborough Road	Market Harborough	1.00	0.56	0.30	0.41	High
LUC_19	8143	Land east of Leicester Rd and south of Grand Union canal	Market Harborough	0.25	0.44	0.30	0.32	Moderate to High
LUC_20	10597	Land south of Gallow Field Road	Market Harborough	0.19	0.06	0.00	0.23	Low to Moderate
LUC_21	8104	Land at M1 Junction 20/Swinford Road	Lutterworth	0.27	0.44	0.30	0.23	Moderate to High
LUC_22	8167	Land off Leicester Road, Lutterworth	Lutterworth	1.00	0.25	0.00	0.27	High
LUC_23	8247	Land west of Warwick Road	Kibworth	1.00	0.39	0.00	0.41	High
LUC_24	8631	Land South of Gartree Rd & East of Oadby *	Great Glen Oadby SDA	1.00	0.42	0.30	0.36	High
LUC_25	8230	Land to the North of London Rd and east of Leicester Grammar School	Great Glen	0.23	0.08	0.00	0.32	Moderate
LUC_26	8055	Land to the west of the Longgrey	Fleckney	0.21	0.06	0.00	0.09	Moderate

Ecological Assessment of Proposed Site Allocations: Phase 1 Desk Study

December 2024

LUC _27	10042	Land north of Kilby Road	Fleckney	1.00	0.22	0.00	0.09	High
LUC _28	10554	Land off Frolesworth Road	Broughton Astley	0.21	0.22	0.00	0.41	Moderate
LUC _29	10491	Moorbarns Farm	Lutterworth	0.29	0.42	0.40	0.32	Moderate to High
LUC _30	12222	Land west of Beeby Road (Scraptoft Golf Club), and land east and west of Hamilton Lane [Scraptoft SDA - smaller option 1]	Scraptoft	1.00	0.58	0.50	0.18	High
LUC _31	12214	Land south of Covert Lane	Scraptoft	0.27	0.06	0.00	0.23	Moderate
LUC _32	12189	Land to the North of Great Glen	Great Glen	1.00	0.42	0.10	0.32	High
LUC _33	12209	Land south of Dunton Road	Broughton Astley	0.27	0.25	0.10	0.41	Moderate
LUC _34	8088	Land to the east of Fleckney Meadows, High Street, Fleckney	Fleckney	0.23	0.22	0.00	0.32	Moderate
LUC _35	8095	Land East of Leicester Road	Market Harborough	0.25	0.28	0.00	0.27	Moderate
LUC _36	8158	Land off Crowfoot Way	Broughton Astley	0.27	0.22	0.10	0.41	Moderate

Ecological Assessment of Proposed Site Allocations: Phase 1 Desk Study

December 2024

LUC_37	8159	Land off Crowfoot Way (north)	Broughton Astley	0.21	0.06	0.00	0.27	Moderate
LUC_38	8171	Land south of Uppingham Road	Billesdon	0.23	0.11	0.00	0.18	Moderate
LUC_39	8187	Husbands Bosworth School Field, Land east of Welford Road	Husbands Bosworth	0.21	0.11	0.00	0.18	Moderate
LUC_40	8205	Land south of Bird Cage Cottage, Arnesby Road	Fleckney	1.00	0.28	0.00	0.18	High
LUC_41	8210	Land North of Leicester Road	Billesdon	0.23	0.11	0.00	0.27	Moderate
LUC_42	8215	Land South of Leicester Road	Billesdon	1.00	0.28	0.00	0.23	High
LUC_43	8218	Land East of Frolesworth Road	Broughton Astley	1.00	0.42	0.00	0.41	High
LUC_44	8252	Land East of Dunton Road	Broughton Astley	0.25	0.22	0.10	0.50	Moderate to High
LUC_45	8248	Land East of Dunton Road (option 1)	Broughton Astley	0.23	0.22	0.10	0.45	Moderate

Ecological Assessment of Proposed Site Allocations: Phase 1 Desk Study

December 2024

LUC_46	8249	Land East of Dunton Road (option 2)	Broughton Astley	0.25	0.22	0.10	0.45	Moderate
LUC_47	8250	Land East of Dunton Road (option 4)	Broughton Astley	0.25	0.22	0.10	0.45	Moderate
LUC_48	8251	Land East of Dunton Road (option 3)	Broughton Astley	0.25	0.25	0.10	0.45	Moderate
LUC_49	8060	Land north east of Kibworth Harcourt	Kibworth	1.00	0.39	0.00	0.36	High
LUC_50	8031	Land off Manor Road	Ullesthorpe	0.19	0.11	0.00	0.27	Low to Moderate
LUC_51	8032	Land south of Field View	Ullesthorpe	0.19	0.08	0.00	0.27	Low to Moderate
LUC_52	8029	Land west of Langton Road	Great Bowden	0.23	0.31	0.00	0.41	Moderate
LUC_53	8044	Land south of London Road	Great Glen	1.00	0.28	0.00	0.27	High
LUC_54	8047	South of Uppingham Road	Houghton on the Hill	0.15	0.11	0.00	0.18	Low to Moderate

Ecological Assessment of Proposed Site Allocations: Phase 1 Desk Study

December 2024

LUC_55	8080	Land north of Mill Lane	Gilmorton	0.17	0.06	0.00	0.27	Low to Moderate
LUC_56	8086	land south of Kilby Road, Fleckney	Fleckney	0.19	0.08	0.00	0.18	Low to Moderate
LUC_57	8087	Land north of Kilby Road	Fleckney	1.00	0.22	0.00	0.18	High
LUC_58	8114	Land off Welham Lane	Great Bowden	0.19	0.14	0.00	0.36	Low to Moderate
LUC_59	8123	Land at Wentworth Close	Kibworth	0.23	0.22	0.00	0.27	Moderate
LUC_60	8134	Old Mill Road	Broughton Astley	1.00	0.42	0.00	0.23	High
LUC_61	8136	Land off Moorbarns Lane	Lutterworth	0.21	0.11	0.00	0.32	Moderate
LUC_62	8138	Land (East of) off Manor Road	Ullesthorpe	0.23	0.28	0.10	0.41	Moderate
LUC_63	8139	Land at Bruntingthorpe	Bruntingthorpe	0.21	0.11	0.10	0.45	Moderate
LUC_64	8144	Land north of Cottage Lane	Broughton Astley	0.19	0.06	0.00	0.32	Low to Moderate

Ecological Assessment of Proposed Site Allocations: Phase 1 Desk Study

December 2024

LUC_65	8145	Land at Birdie Close	Kibworth	0.27	0.22	0.00	0.23	Moderate
LUC_66	8146	Land south of Mill Lane	Gilmorton	0.23	0.06	0.00	0.27	Moderate
LUC_67	8149	Land off Fleckney Road/Warwick Road, Kibworth	Kibworth	1.00	0.25	0.00	0.27	High
LUC_68	8150	Land south of A47 Uppingham Road	Thurnby and Bushby	1.00	0.58	0.40	0.32	High
LUC_69	8105	Warren Farm (West)	Lutterworth	0.29	0.06	0.00	0.45	Moderate
LUC_70	8152	North and South of Gilmorton Road (Extension to Lutterworth East SDA)	Lutterworth	1.00	0.44	0.10	0.45	High
LUC_71	8157	Land south west of Braybrooke Road	Market Harborough	0.23	0.25	0.00	0.32	Moderate
LUC_72	8162	Land off A6	Kibworth	1.00	0.36	0.00	0.36	High
LUC_73	8168	Land north of 54 The Ridgeway, Market Harborough	Market Harborough	0.17	0.42	0.30	0.45	Moderate to High
LUC_74	8174	land off Burton Way, Fleckney	Fleckney	0.21	0.25	0.00	0.36	Moderate

Ecological Assessment of Proposed Site Allocations: Phase 1 Desk Study

December 2024

LUC_75	8181	Land west of Welford Road	Husbands Bosworth	0.19	0.08	0.00	0.27	Low to Moderate
LUC_76	8199	Land off Carlton Road	Kibworth	0.23	0.08	0.00	0.27	Moderate
LUC_77	8207	Land south of Braybrook Road	Market Harborough	0.21	0.19	0.00	0.32	Moderate
LUC_78	8216	Land South of Kilby Road	Fleckney	0.19	0.08	0.00	0.14	Low to Moderate
LUC_79	8220	Land at Witham Villa	Broughton Astley	1.00	0.39	0.00	0.41	High
LUC_80	8224	Land off Fleckney Road	Kibworth	0.25	0.11	0.10	0.27	Moderate
LUC_81	8228	Land north of Hall Lane (part of site24/ 12179)	Ullesthorpe	0.23	0.11	0.00	0.23	Moderate
LUC_82	8208	land off A5, north of White House Farm	Ullesthorpe	0.17	0.06	0.00	0.32	Low to Moderate
LUC_83	8236	Land North-East of Harborough Road	Kibworth	1.00	0.39	0.00	0.32	High
LUC_84	8238	land west of Leicester Road	Kibworth	0.21	0.06	0.00	0.32	Moderate

Ecological Assessment of Proposed Site Allocations: Phase 1 Desk Study

December 2024

LUC_85	8242	Land South of Fleckney Road	Kibworth	1.00	0.25	0.00	0.27	High
LUC_86	8245	Land off Hall Road	Ullesthorpe	0.23	0.28	0.00	0.27	Moderate
LUC_87	8257	Land at Little Bowden	Market Harborough	0.23	0.25	0.00	0.23	Moderate
LUC_88	8259	Land at Honeypot Lane	Husbands Bosworth	0.21	0.11	0.00	0.32	Moderate
LUC_89	8196	Land north of Covert Lane (West)	Scraftoft	1.00	0.39	0.30	0.18	High
LUC_90	8627	Paddock to the rear of 2 Orchard Lane	Great Glen	0.33	0.25	0.00	0.32	Moderate to High
LUC_91	8999	Land North West Theddingworth Road	Husbands Bosworth	0.21	0.28	0.00	0.36	Moderate
LUC_92	9005	Spring Farm, Moorbarns Lane	Lutterworth	0.15	0.11	0.00	0.36	Low to Moderate
LUC_93	10248	Land east of Northampton Road, north of Harborough Enterprise Centre	Market Harborough	0.21	0.25	0.00	0.18	Moderate

LUC _94	10257	Land west of Leicester Road, Lutterworth	Lutterworth	1.00	0.25	0.00	0.27	High
LUC _95	10318	Land at Gilmorton Road	Lutterworth	1.00	0.25	0.00	0.41	High
LUC _96	10332	Land off Moorbarns Road	Lutterworth	0.25	0.25	0.00	0.27	Moderate
LUC _97	9318	Land to the west of Moorbarns Lane (housing)	Lutterworth	0.21	0.11	0.00	0.32	Moderate
LUC _98	9406	Land at Bell Lane/Kilworth Road	Husbands Bosworth	0.23	0.14	0.00	0.27	Moderate
LUC _99	10433	Land south of A4303, Lutterworth	Lutterworth	0.31	0.28	0.10	0.36	Moderate to High
LUC _10 0	10536	Land north of Catthorpe Interchange	Shawel l	0.23	0.25	0.30	0.41	Moderate
LUC _10 1	10501	Land adjacent to Westfield House, Leicester Road	Kibworth	0.19	0.06	0.00	0.18	Low to Moderate
LUC _10 2	10508	Land to the south of Station Road	North Kilworth	0.23	0.25	0.00	0.45	Moderate
LUC _10 3	10519	Land north of Wistow Road	Kibworth	0.23	0.22	0.00	0.36	Moderate

LUC _10 4	10522	Land off Rugby Road	Cotesb ach	0.25	0.22	0.10	0.36	Moderat e
LUC _10 5	9895	Land east of Welford Road	Husba nds Boswor th	1.00	0.25	0.00	0.23	High
LUC _10 6	10612	Land South of Fleckney Road	Kibwort h	1.00	0.25	0.00	0.27	High
LUC _10 7	10478	Land at Wentworth Close	Kibwort h	0.25	0.22	0.00	0.27	Moderat e
LUC _10 8	10240	St Marys Road, Market Harborough	Market Harbor ough	0.23	0.19	0.00	0.23	Moderat e
LUC _10 9	10219	Land to the south of Harborough Road/South East of Kettering Road	Market Harbor ough	0.15	0.06	0.00	0.23	Low to Moderat e
LUC _11 0	10135	Land south of Coventry Road	Brough ton Astley	0.27	0.25	0.00	0.41	Moderat e
LUC _11 1	10117	Land west of Beeby Road (Scraptoft Golf Club), and land east and west of Hamilton Lane [Scraptoft SDA]	Scrap toft	1.00	0.58	0.40	0.18	High

Ecological Assessment of Proposed Site Allocations: Phase 1 Desk Study

December 2024

LUC _11 2	10255	Land south of Gibbet Lane	Shawel l	1.00	0.22	0.00	0.18	High
LUC _11 3	9355	North of Uppingham Road (east), Houghton on the Hill	Hought on on the Hill	1.00	0.22	0.00	0.23	High
LUC _11 4	12179	Land to the north of Hall Lane	Ullest horpe	0.19	0.25	0.00	0.32	Low to Moderat e
LUC _11 5	10175	Land to the east of Broughton Chase	Brough ton Astley	0.19	0.25	0.10	0.36	Low to Moderat e
LUC _11 6	10012	Land at Witham Villa, Broughton Road	Brough ton Astley	1.00	0.39	0.00	0.41	High
LUC _11 7	10140	Land east of Fleckney Road	Fleckn ey	0.17	0.11	0.00	0.14	Low to Moderat e
LUC _11 8	10169	Land north and south of Covert Lane	Scrap toft	0.25	0.06	0.00	0.27	Moderat e
LUC _11 9	10170	Land to the south of Braybrooke Road	Market Harbor ough	0.23	0.25	0.00	0.23	Moderat e
LUC _12 0	10680	Land to the east of Dunmore Road	Market Harbor ough	0.23	0.25	0.00	0.23	Moderat e

LUC _12 1	12186	Land to the north of Wistow Road	Kibworth	0.23	0.22	0.00	0.32	Moderate
LUC _12 2	12187	Land north of Wistow Road and west of A6	Kibworth	0.25	0.39	0.30	0.41	Moderate
LUC _12 3	12211	Land north of Wayside Lodge, Covert Lane	Scraptoft	0.17	0.08	0.00	0.14	Low to Moderate
LUC _12 4	12212	Land east of A6	Market Harborough	0.21	0.08	0.10	0.36	Moderate
LUC _12 5	8019	Land west of Harborough Road	Market Harborough	0.21	0.06	0.00	0.14	Moderate
LUC _12 6	0	Land north of Magna Park	0	0.27	0.39	0.10	0.41	Moderate
LUC _12 7	8124	N/A	Kibworth	0.15	0.08	0.00	0.23	Low to Moderate
LUC _12 8	8093	N/A	Oadby Woodlands	1.00	0.32	0.40	0.32	High
LUC _12 9	8045	N/A	Broughton Astley	0.19	0.27	0.10	0.36	Low to Moderate

Ecological Assessment of Proposed Site Allocations: Phase 1 Desk Study

December 2024

LUC _13 _0	8094	N/A	Ullesthorpe	0.19	0.29	0.10	0.41	Moderate
LUC _13 _1	8132	N/A	Market Harborough	1.00	0.44	0.30	0.23	High
LUC _13 _2	8141	N/A	Market Harborough	1.00	0.39	0.00	0.41	High
LUC _13 _3	10249	N/A	Market Harborough	0.08	0.19	0.00	0.18	Low to Moderate
LUC _13 _4	10642	N/A	Kibworth	0.08	0.22	0.00	0.14	Low to Moderate
LUC _13 _5	12213	N/A	Kibworth	0.08	0.08	0.00	0.23	Low
LUC _13 _6	12217	N/A	Thurcroft	0.17	0.24	0.10	0.18	Low to Moderate
LUC _13 _7	12220	N/A	Kibworth	0.19	0.22	0.00	0.27	Low to Moderate
LUC _14 _0	12231	N/A	Market Harborough	1.00	0.36	0.00	0.27	High

Ecological Assessment of Proposed Site Allocations: Phase 1 Desk Study

December 2024

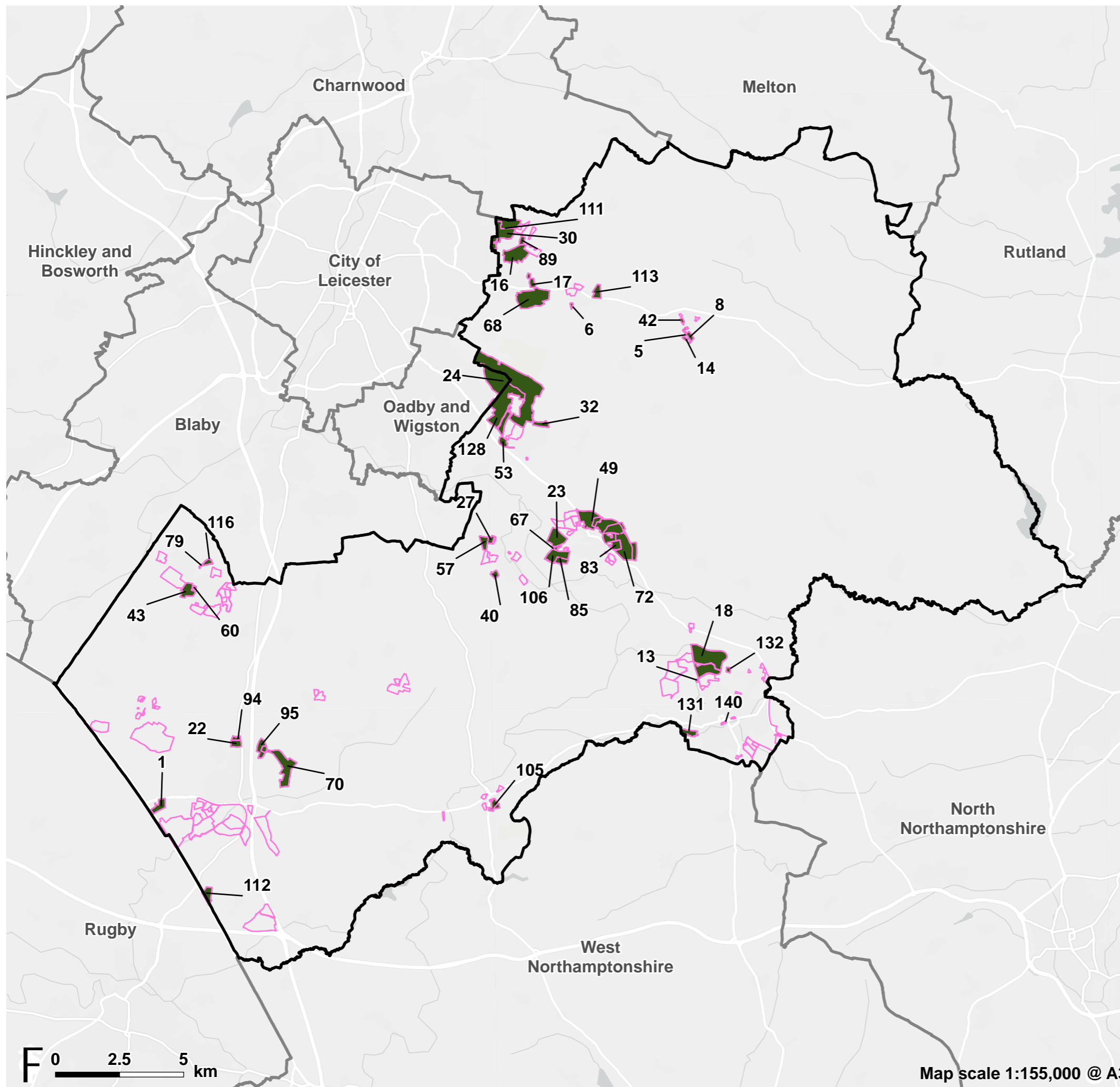
LUC 14 1	12235	N/A	Thurnb y and Hought on	0.29	0.10	0.00	0.18	Moderat e
LUC 14 2	12223	N/A	Kibwort h	0.21	0.19	0.10	0.32	Moderat e

Appendix C

Maps of Sites Categorised by Sensitivity



Figure 1: Allocated sites with a sensitivity score of high

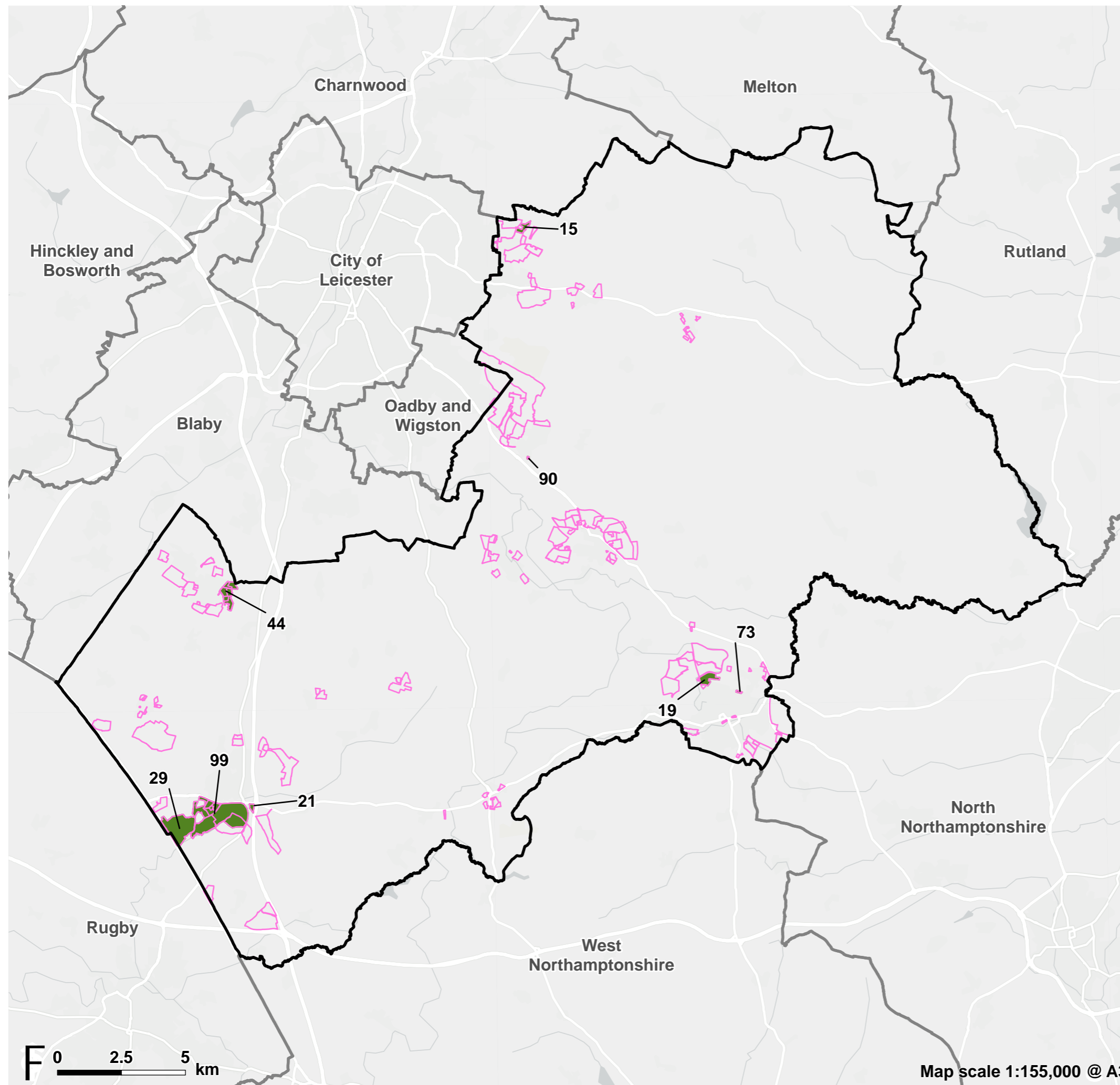


- Harborough district boundary
 - Other district boundary
 - Proposed allocated site
- Sensitivity analysis**
- High





Figure 2: Allocated sites with a sensitivity score of moderate to high

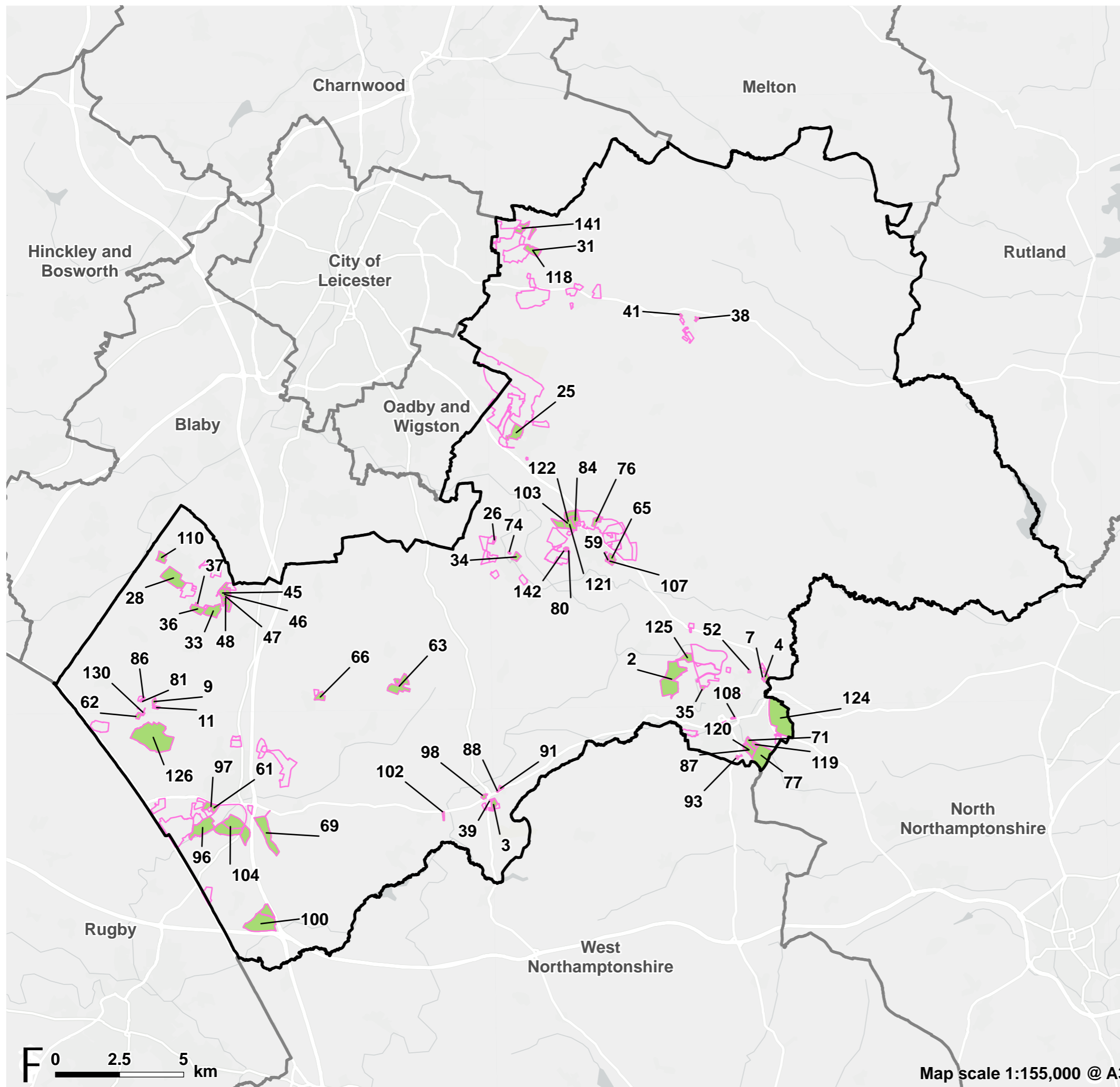


- Harborough district boundary
 - Other district boundary
 - Proposed allocated site
- Sensitivity analysis**
- Moderate to high





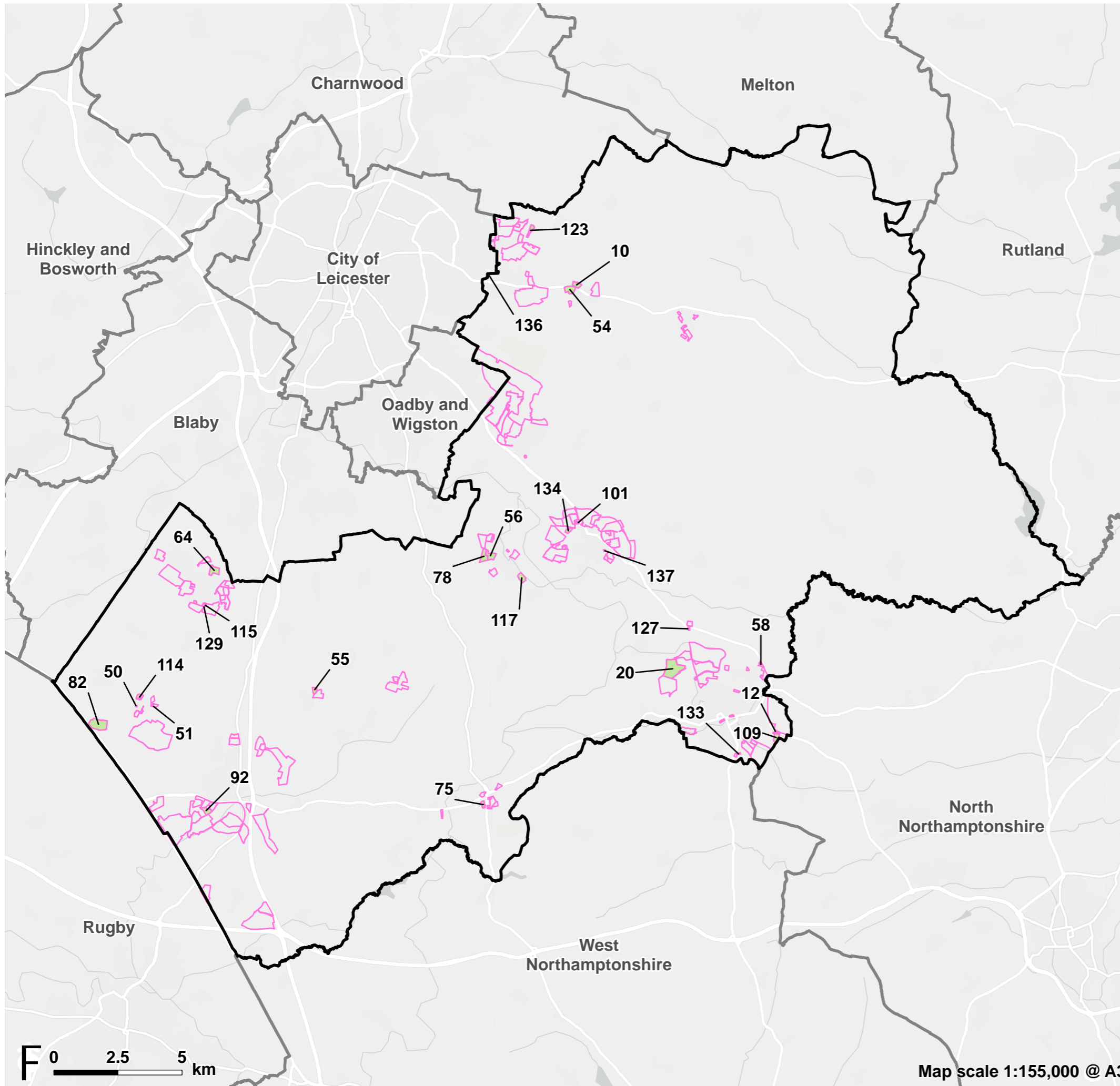
Figure 3: Allocated sites with a sensitivity score of moderate



- Harborough district boundary
 - Other district boundary
 - Proposed allocated site
- Sensitivity analysis**
- Moderate



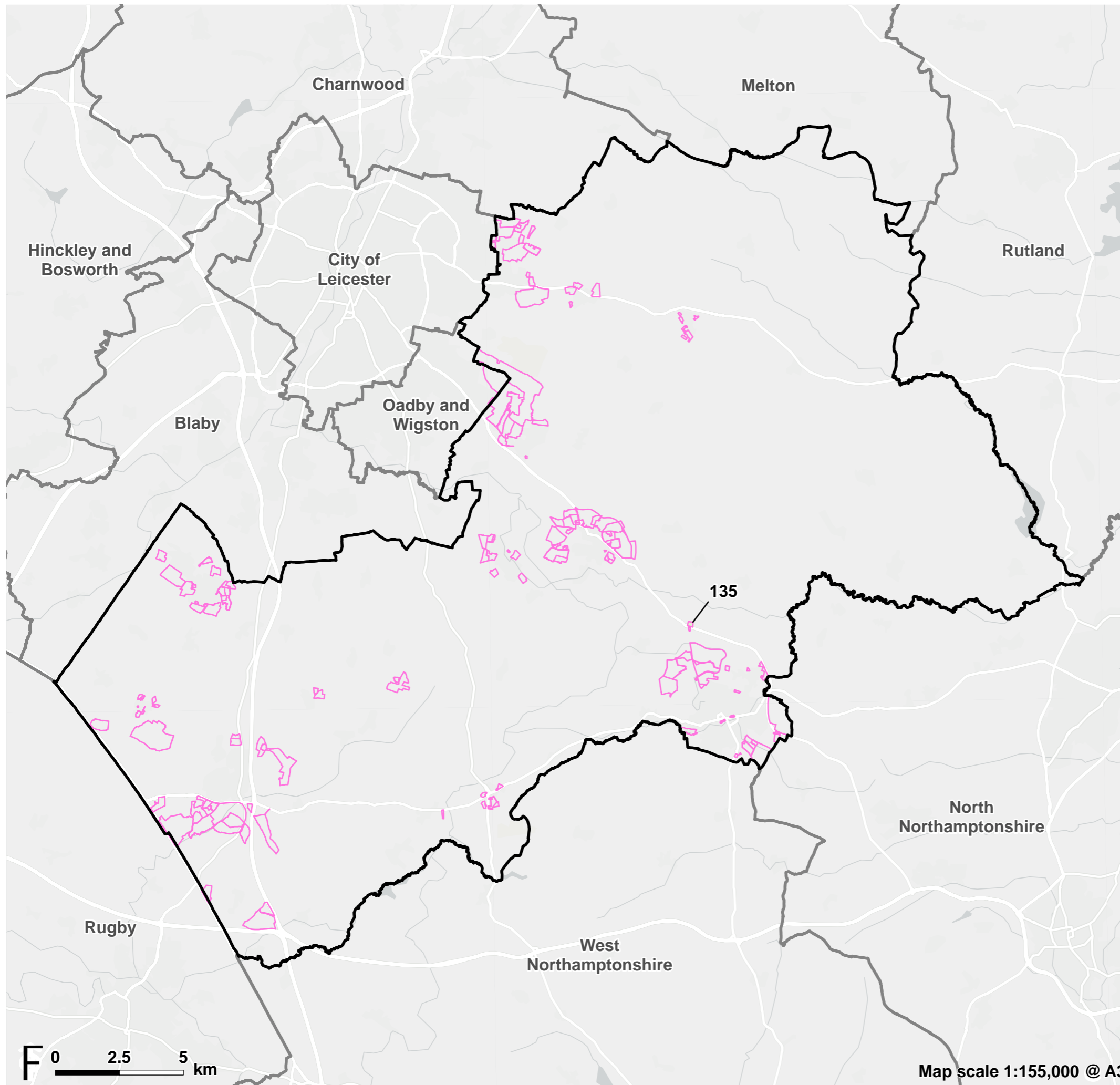
Figure 4: Allocated sites with a sensitivity score of low to moderate



- Harborough district boundary
 - Other district boundary
 - Proposed allocated site
- Sensitivity analysis**
- Low to moderate



Figure 5: Allocated sites with a sensitivity score of low



- Harborough district boundary
 - Other district boundary
 - Proposed allocated site
- Sensitivity analysis**
- Low

