

Harborough Local Plan

Duty to Cooperate (Effective Cooperation) Statement of Compliance (Submission)

April 2026

Preface

The Government announced on 27 November 2025 its intention to shortly lay regulations which will enable Local Planning Authorities (LPAs) to initiate formal preparation procedures for new-style plans. On 2 March 2026 commencement regulations were laid before parliament bringing into effect the Levelling-up and Regeneration Act 30 month local plan system. Included in the provisions, which came into force on 25 March 2026, is the revocation of the Duty to Cooperate.

The Duty therefore ceased to apply from 25 March 2026 including where local plans are being prepared under transitional arrangements such as the Harborough Local Plan.

While the new system will rely on revised national policy and the new tier of strategic planning to ensure effective co-operation between plan-making authorities, the Government has emphasised the importance of local planning authorities continuing to collaborate across their boundaries, including on unmet development needs from neighbouring authorities. Whilst referring to the Duty to Cooperate, the following Statement of Compliance more generally demonstrates how the Council has collaborated with partners on cross-boundary strategic matters and the steps it has taken to ensure effective cooperation in the preparation of the new Local Plan.

Contents

1.0	Introduction	4
1.1	Purpose of the Duty to Cooperate Statement of Compliance	4
1.2	Requirements of the Duty to Cooperate	5
1.3	Prescribed Duty to Cooperate bodies	6
2.0	Duty to Cooperate Activities (up to Regulation 19 consultation)	7
3.0	Duty to Cooperate engagement with surrounding local authorities and prescribed Duty to Cooperate bodies up to Regulation 19 consultation	12
3.1	Introduction	12
3.2	Engagement with Leicestershire local authorities	12
3.3	Engagement with non-Leicestershire local authorities	34
3.4	Engagement with prescribed Duty to Cooperate bodies	40
4.0	Strategic and cross-boundary matters	47
4.1	Identification of strategic and cross boundary matters	47
5.0	Duty to Cooperate Statements of Common Ground	54
6.0	Post Regulation 19 Duty to Cooperate Activity	57
6.1	Summary of Local Authority and Prescribed Body Responses to the Proposed Submission Local Plan Consultation (Regulation 19)	57
6.2	Post Regulation 19 Consultation Discussions/Activity	65
6.3	Strategic Matters: Summary of areas of agreement and remaining areas of significant disagreement	67
6.4	Signed/Agreed Post Regulation 19 Statements of Common Ground:	69
6.5	Emerging SOCG	73
6.6	Conclusion	74
	Appendices	75
	Appendix 1: Duty to Cooperate Activities Register	75
	Appendix 2: Statements of Common Ground	100
	Appendix 3: Links to evidence documents referenced	102
	Appendix 4: Letter of Collaboration from Leicestershire County Council (12 February 2026) reported to Cabinet on 2 March 2026	103

1.0 Introduction

1.1 Purpose of the Duty to Cooperate Statement of Compliance

- 1.1.1 The Harborough Local Plan Duty to Cooperate Statement of Compliance demonstrates how Harborough District Council has complied with the requirements of the Duty to Cooperate throughout the production and progression of the Local Plan.
- 1.1.2 This Statement of Compliance sets out how the Council has engaged constructively, actively and on an ongoing basis with surrounding authorities and prescribed Duty to Cooperate bodies on strategic and cross boundary matters during the preparation of the Plan, and the outcomes arising from this engagement. An overview of Duty to Cooperate related activities is presented within Appendix 1.
- 1.1.3 This Statement of Compliance forms part of the Local Plan evidence base and is a submission document.

1.2 Requirements of the Duty to Cooperate

- 1.2.1 The Duty to Cooperate, introduced under the Localism Act 2011, is a legal duty for local planning authorities, county councils and relevant bodies to ‘engage constructively, actively and on an ongoing basis in any process’ including the preparation of development plan documents (Section 33A of the Planning and Compulsory Purchase Act 2004).
- 1.2.2 The National Planning Policy Framework (NPPF, December 2024) states that local planning authorities should engage with relevant bodies to meet the Duty to Cooperate, including elected Mayors and combined authorities, infrastructure providers, Local Nature Partnerships and the Marine Management Organisation¹. The NPPF highlights that ‘effective and on-going joint working between strategic policy-making authorities and relevant bodies is integral to the production of a positively prepared and justified strategy’ and is essential in determining additional infrastructure needs and in addressing unmet development needs².
- 1.2.3 To demonstrate effective and on-going joint working, the NPPF recommends that authorities ‘prepare and maintain one or more statements of common ground, documenting the cross-boundary matters being addressed and progress in cooperating to address these’³.
- 1.2.4 As part of the Duty to Cooperate, local planning authorities should ‘identify the relevant strategic matters which they need to address in their plans’⁴. The Planning and Compulsory Purchase Act 2004 defines strategic matters as ‘sustainable development or use of land that has or would have a significant impact on at least two planning areas, including (in particular) sustainable development or use of land for or in connection with infrastructure that is strategic and has or would have a significant impact on at least two planning areas’.

¹ Paragraph 25, National Planning Policy Framework

² Paragraph 26, National Planning Policy Framework

³ Paragraph 28, National Planning Policy Framework

⁴ Paragraph 25, National Planning Policy Framework

1.3 Prescribed Duty to Cooperate bodies

1.3.1 The Town and Country Planning (Local Planning)(England) Regulations 2012 sets out the following prescribed bodies relevant to Harborough District Council to which the Duty to Cooperate applies:

- The Environment Agency
- Historic England
- Natural England
- The Civil Aviation Authority
- Homes England
- NHS Leicester, Leicestershire and Rutland Integrated Care Board/National Health Service (NHS) England
- Office of Rail and Road
- National Highways
- Leicestershire County Council Highway Authority
- Leicestershire Local Nature Partnership

1.3.2 In addition to the prescribed Duty to Cooperate bodies listed above, the Council has also engaged with the following local planning authorities and county councils:

- Leicester and Leicestershire authorities:
 - Blaby District Council
 - Charnwood Borough Council
 - Hinckley and Bosworth Borough Council
 - Leicester City Council
 - Leicestershire County Council
 - Melton Borough Council
 - North West Leicestershire District Council
 - Oadby and Wigston Borough Council
- Non-Leicestershire authorities:
 - North Northamptonshire Council
 - Rugby Borough Council
 - Rutland County Council
 - Warwickshire County Council
 - West Northamptonshire Council

1.3.3 To support the production of the Local Plan, and to ensure a comprehensive approach to cooperation on strategic and cross boundary matters, engagement undertaken by the Council has gone beyond those prescribed Duty to Cooperate bodies and surrounding authorities listed above, to also include cooperation with a range of other organisations that may have an interest in the production of the Plan. The organisations which the Council has engaged with, and the type of engagement undertaken, are summarised within Appendix 1.

2.0 Duty to Cooperate Activities (up to Regulation 19 consultation)

Introduction

- 2.1.1 Appendix 1 sets out a summary of Duty to Cooperate (DtC) related activities which the Council has undertaken, including meetings and consultation with relevant organisations.
- 2.1.2 Sections 2.0 – 5.0 provide an overview of the main Duty to Cooperate activities undertaken by the Council in the lead up to Regulation 19 consultation on the draft Local Plan. Section 6.0 covers DtC engagement following Regulation 19 consultation on the draft Local Plan, providing a summary of the issues raised in representations, any additional evidence prepared (or in preparation) and activities that have taken place to reach agreement on outstanding issues.

Regular Duty to Cooperate meetings with Leicestershire local authorities and County Council,

Members' Advisory Group (MAG)

- 2.1.3 A councillor from each Leicestershire authority meet regularly to discuss joint strategic planning work.

Strategic Planning Group (SPG)

- 2.1.4 Senior representatives responsible for overseeing strategic planning in each Leicestershire authority meet on regularly to discuss strategic planning matters.

Planning Officers' Forum (POF)

- 2.1.5 Chief Officers responsible for planning and transport services across Leicester and Leicestershire meet formally and provide professional advice to the Strategic Planning Group. The Planning Officers' Forum is supported by joint officer level meetings and includes managers responsible for planning and transportation policy in Leicester and Leicestershire.

Regulation 18 Local Plan Issues and Options consultation, 16 January to 27 February 2024

- 2.1.6 As outlined within the Local Plan Consultation Statement, all surrounding local authorities and prescribed Duty to Cooperate bodies were made aware of the

Regulation 18 Local Plan Issues and Options consultation and invited to provide a representation.

2.1.7 The Issues and Options consultation document included a section on the Duty to Cooperate and cross-boundary matters. Question 6 of the consultation document asked whether consultees agreed with the strategic matters identified by the Council and whether there were any changes or additions they considered should be made at this stage. The following potential strategic matters were identified and received overall support at the Regulation 18 stage:

- Housing requirements and distribution (including unmet need issues)
- Affordable housing, housing mix, homes for older persons and others with specialist needs
- Gypsies, Travellers and Travelling Showpeople accommodation needs
- Economy and employment requirements and distribution including strategic warehousing (strategic B8)
- Retail, leisure and other commercial development
- Highways and transport
- Water issues (supply, wastewater, water quality, flood risk)
- Other infrastructure including telecommunications, security, waste management, minerals and energy
- Community facilities (health, education, cultural infrastructure)
- Conservation of the natural environment including biodiversity net gain/local nature recovery strategy/landscape/green and blue infrastructure
- Conservation of the built and historic environment, including quality and character
- Climate change mitigation and adaptation including renewable energy
- Green wedges
- Cross boundary sites/impact of potential strategic sites.

2.1.8 The relevant local authorities and prescribed Duty to Cooperate bodies which provided representations at Regulation 18 are listed below.

- Hinckley and Bosworth Borough Council
- Historic England
- Environment Agency
- National Highways
- Leicester City Council
- Leicestershire County Council
- Melton Borough Council
- North Northamptonshire Council
- Natural England
- NHS
- Rugby Borough Council
- North West Leicestershire District Council
- West Northamptonshire Council

Meetings with prescribed Duty to Cooperate bodies, April and October 2024

- 2.1.9 The Council has invited all prescribed Duty to Cooperate bodies to participate in the production of the Local Plan. All prescribed bodies were invited to attend Duty to Cooperate workshops in April and October 2024 and, where required, ongoing engagement has taken place to support the production of the Plan.

Engagement with infrastructure providers

- 2.1.10 Meetings between infrastructure providers and Harborough District Council planning officers were held to discuss the draft Harborough Local Plan and emerging Infrastructure Delivery Plan. Meetings were held with National Highways and the NHS.

Duty to Cooperate Workshop, 30 April 2024

- 2.1.11 A Duty to Cooperate workshop was held on 30 April 2024 virtually using MS Teams with infrastructure providers, surrounding local authorities and other prescribed Duty to Cooperate bodies. The workshop was guided by a PowerPoint which:
- Provided an update on the Harborough Local Plan
 - Summarised Local Plan evidence base production, including the Infrastructure Delivery Plan
 - Summarised outputs from the Duty to Cooperate Scoping Report and presented the DtC approach and timetable of next steps for DtC engagement
 - Sought to identify and confirm strategic and cross boundary matters which should be considered through the production of the Harborough Local Plan.
- 2.1.12 Invitations to the DtC workshop were circulated to all relevant local authorities, prescribed Duty to Cooperate bodies, and other key stakeholders likely to be involved in the production and progression of the Local Plan.

Duty to Cooperate Workshop, 10 October 2024

- 2.1.13 A Duty to Cooperate workshop was held on 10 October 2024 virtually using MS Teams with infrastructure providers, surrounding local authorities and other prescribed Duty to Cooperate bodies. The workshop was guided by a PowerPoint which:
- Provided an update on the emerging draft Harborough Local Plan, including the emerging spatial strategy and emerging potential site allocations
 - Provided an update on Local Plan evidence base production

Harborough Duty to Cooperate Statement of Compliance

- Confirmed identified strategic cross boundary matters
- Set out the Council's approach to meeting Duty to Cooperate requirements
- Presented the next steps in the DtC engagement schedule
- Discussed the production of Statements of Common Ground

2.1.14 Invitations to the DtC workshop were circulated to all relevant local authorities, prescribed Duty to Cooperate bodies, and other key stakeholders likely to be involved in the production and progression of the Local Plan.

Strategic B8 logistics meetings, 2024

2.1.15 There was an identified need for strategic B8 in the Warehousing and Logistics in Leicester and Leicestershire: Managing Growth and Change (April 2021) report. To understand the apportionment of this need across the region, a Leicester and Leicestershire wide strategic B8 study was undertaken in 2025. Following Regulation 18 consultation representations concerning an underrepresentation of strategic B8, Harborough District Council commissioned Icenii to investigate strategic B8 needs for the District.

2.1.16 Meetings and correspondence with North Northamptonshire, Rugby Borough Council, West Northamptonshire, and the Leicester and Leicestershire Authorities were held in September 2024 to discuss the need for strategic B8 and potential allocations within Harborough District Council and the other local authorities, and the approach to producing statements of common ground.

2.1.17 Harborough District Council agreed to share emerging draft evidence and Local Plan policies for informal review and comment prior to Regulation 19 publication. In November 2024, the same authorities received the draft strategic B8 Icenii study commissioned by Harborough District Council for review and comment.

Informal liaison on pre-Regulation 19 Local Plan emerging policies, October 2024

2.1.18 In October 2024, a confidential draft Local Plan was shared with DtC bodies and infrastructure providers to give them an opportunity to give early informal feedback on emerging allocations and policies. Comments made at this helped to inform the refinement of policies and policy requirements for proposed site allocations in the run up to the Regulation 19 consultation.

Regulation 19 Consultation on Proposed Submission Draft Harborough Local Plan 2020-2041, 10 March to 6 May 2025

- 2.1.19 The Council launched its Proposed Submission Local Plan consultation on 10th March 2025. The consultation, which ran for just over 8 weeks, gave DtC bodies, key stakeholders and the public the opportunity to make formal representations on compliance with the DtC, legal compliance and soundness. Alongside the Draft Local Plan, a Duty to Cooperate Statement of Compliance (January 2025)⁵ was published. This demonstrated the steps taken by the Council to comply with the Duty to Cooperate up to the beginning of 2025.
- 2.1.20 A summary of the representations made by DtC bodies on the Draft Proposed Submission Local Plan is set out at Section 6.1. This summary sets out any comments made regarding the DtC and issues identified which require further joint working and cooperation.

Duty to Cooperate Statements of Common Ground, March 2025

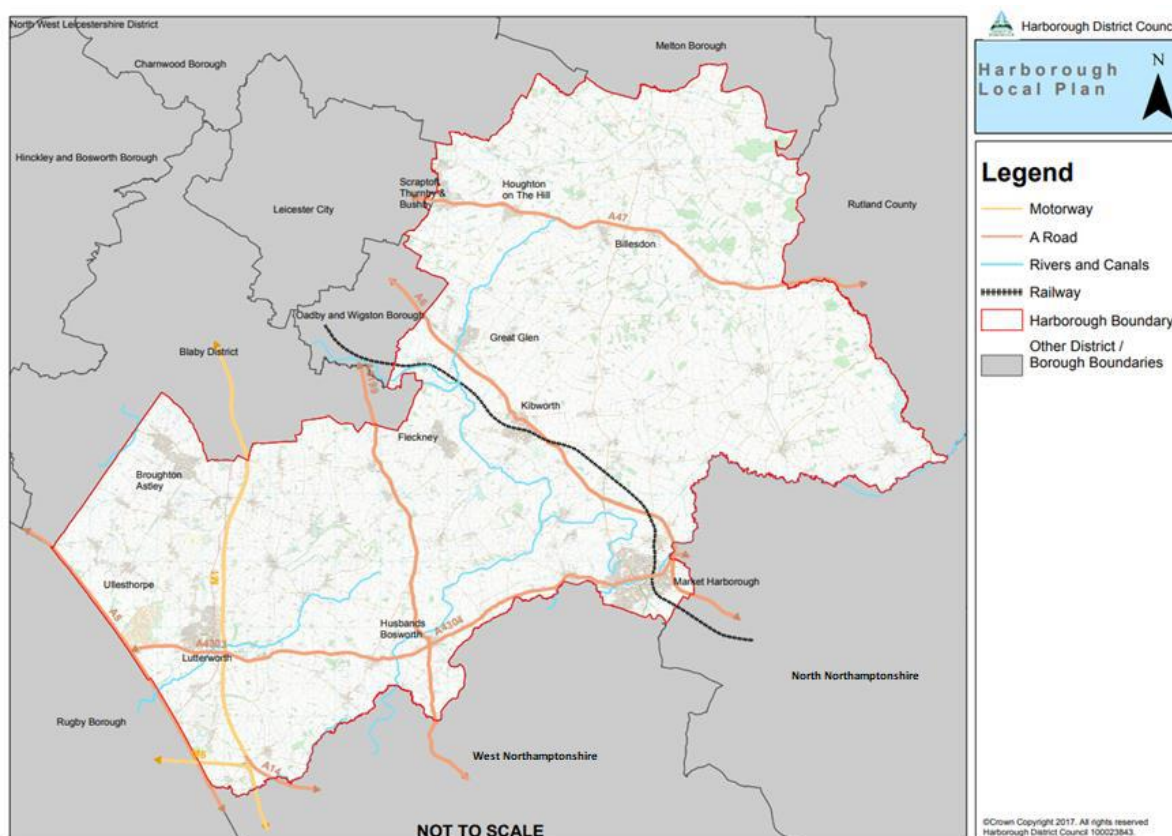
- 2.1.21 Following on from the publication of the Regulation 19 Proposed Submission Draft Local Plan, on 11 March 2025 DtC bodies were each sent a draft Duty to Cooperate Statement of Common Ground for agreement and signing. Each SoCG sets out how the Council had sought to engage and cooperate with the partner in the run up to the Regulation 19 consultation, accepting that engagement would continue in the post Regulation 19 period as necessary (See Section 6.0). It focused on the strategic and cross boundary matters relevant to the parties and was produced without prejudice to other matters of detail that the parties may wish to raise during the Local Plan examination. Further details are available in Section 5.0 with Appendix 2 providing links to the signed DtC SoCGs.
- 2.1.22 This process led to the refinement of the strategic matters with the following being identified as key strategic matters in the preparation of the Local Plan:
- Unmet housing needs (including addressing Leicester's unmet housing need beyond 2036);
 - Planning for growth in the logistics (strategic B8) sector;
 - Expansion of Magna Park – potential impacts (including on Strategic Road Network);
 - Impacts of site allocations within the emerging Local Plan (i.e. strategic and/or cross boundary sites) including transport and education; and
 - Green Wedges.

⁵ https://www.harborough.gov.uk/downloads/download/1739/duty_to_cooperate_2025

3.0 Duty to Cooperate engagement with surrounding local authorities and prescribed Duty to Cooperate bodies up to Regulation 19 consultation.

3.1 Introduction

3.1.1 Harborough District is located within Leicestershire County. To the north of Harborough are the other Leicestershire authorities and Leicester City. Of these Harborough District shares a border with Melton Borough, Charnwood Borough, Leicester City, Oadby & Wigston Borough and Blaby District. Rugby Borough, part of Warwickshire County, lies to the west, West Northamptonshire and North Northamptonshire lie to the south and Rutland County lies to the east.



3.2 Engagement with Leicestershire local authorities

3.2.1 Harborough sits within the Leicester and Leicestershire Housing Market Area (HMA) and Functional Economic Market Area (FEMA), which both cover the whole of Leicester and

Harborough Duty to Cooperate Statement of Compliance

Leicestershire. These have been defined in recognition of the central economic role of Leicester and the fact that people generally travel to work and move house across local authority boundaries within this area.

3.2.2 The authorities have a proven history of joint working, as evidenced by the activities summarised in the tables below. The tables below provide a summary of engagement activities undertaken with Leicestershire local authorities up to Regulation 19 consultation on the draft Harborough Local Plan and, where relevant, the signing of DtC SoCGs referred to in 2.1.21 above. **Post Regulation 19 engagement is set out in Section 6.0.**

Blaby District Council

Date	Brief Description of the activity	Key outputs
Recurring	Regular MAG, SPG and POF local plan managers group meetings	<ul style="list-style-type: none"> Regular Harborough Local Plan updates provided
Various	Production of joint evidence base documents.	<p>On behalf of all Leicester and Leicestershire authorities:</p> <ul style="list-style-type: none"> Warehousing and Logistics in Leicester and Leicestershire (GL Hearn, April 2021) Housing and Employment Needs Report (Iceni, June 2022) and Housing Distribution/ Employment Distribution Papers Strategic B8 Distribution and Warehousing Study (Iceni, in production) Housing and Employment Needs Assessment (HENA)(Iceni, in production) <p>On behalf of the South Leicestershire authorities (Blaby, Harborough, Hinckley and Bosworth, Oadby and Wigston):</p> <ul style="list-style-type: none"> South Leicestershire Joint transport evidence: Stage 1 (Jan 2025, AECOM for Leicestershire County Council). <p>On behalf of Blaby, Harborough, Hinckley and Bosworth, Oadby and Wigston:</p> <ul style="list-style-type: none"> Joint Water Cycle Scoping Study (JBA, December 2024)
Recurring	A5 Member Partnership. Quarterly meeting to discuss strategic matters associated with the A5 for all authorities on the route, including	Discussion relating to potential mitigation measures and safety issues.

Harborough Duty to Cooperate Statement of Compliance

Date	Brief Description of the activity	Key outputs
	neighbouring Leicestershire and Warwickshire authorities.	
November 2021	South Leicestershire Local Plan Making SoCG	Production of a SoCG prepared in the context of identified key cross boundary issues that are specific to the South Leicestershire (Blaby, Harborough, Oadby and Wigston) authorities, outlining how strategic matters relating to unmet needs, transport, infrastructure, development pressures, and evidence base production, are being considered between the authorities.
June 2022	Production of the Leicester and Leicestershire Authorities SoCG relating to Housing and Employment Needs.	Outlining how strategic matters relating to the DtC, housing and employment needs to 2036, unmet need to 2036, and the apportionment of unmet need to 2036, have been addressed within the area.
16/01/24-27/02/24	Harborough Local Plan Regulation 18 consultation	Understanding of emerging Local Plan issues and options.
21/03/24	Meeting of the Leicester and Leicestershire authorities to discuss approaches to self-build housing	Discussions relating to relevant Local Plan policies, monitoring, promotion of the self-build register, applications and appeals relating to self-build housing, and the sharing of information relating to relevant appeal decisions.
30/04/24	<p>Online DtC workshop with all prescribed DtC bodies.</p> <ul style="list-style-type: none"> • The Council attended the workshop. • All workshop materials were sent to the Council for review and comment. 	<p>All attendees were provided with updates on:</p> <ul style="list-style-type: none"> • The Regulation 18 Issues and Options Consultation responses • The emerging Local Plan and spatial strategy • Proposed DtC engagement activities • Approach to the production of a DtC SoCG • Identified potential strategic cross-boundary matters • Emerging evidence base studies
21/06/24	Leicester and Leicestershire Partnership meeting. Officer level meeting for all Leicester and Leicestershire authorities.	Discussions on the approach being taken by Leicestershire authorities in Local Plans to address strategic matters. Agreement to continue to meet regularly to consider these issues further.
17/09/24	DtC Strategic B8 meeting with Blaby District Council, Charnwood Borough Council,	The meeting included discussions regarding:

Harborough Duty to Cooperate Statement of Compliance

Date	Brief Description of the activity	Key outputs
	Hinckley and Bosworth Borough Council, Leicestershire County Council, North West Leicestershire District Council, and the Leicester and Leicestershire Partnership	<ul style="list-style-type: none"> • The preparation of the Harborough Local Plan • Emerging need for strategic B8 and potential allocations • Approach to producing statements of common ground • Approach to addressing strategic B8 needs for each authority
10/10/24	<p>Online DtC Workshop with all prescribed DtC bodies.</p> <ul style="list-style-type: none"> • The Council attended the workshop. • All workshop materials were sent to the Council for review and comment. 	<p>All attendees were provided with updates on:</p> <ul style="list-style-type: none"> • The emerging Local Plan and spatial strategy • DtC engagement activities undertaken to date • Identified strategic cross-boundary matters, and how they are being addressed through the production of the Local Plan. • Approach to the production of DtC SoCG
11/10/24	Liaised informally to invite comments on emerging draft Regulation 19 Local Plan sections and policies.	Understanding of emerging proposals
01/11/24	Provided with the draft strategic B8 Icen study commissioned by HDC for review and comment.	Understanding of emerging evidence
Feb 2025	Production of Duty to Co-operate Statement: Transitional arrangements in respect of unmet need (February 2025)	Supporting the progression and adoption of current and future Local Plans through confirming the agreed position of all partner councils on arrangements to deal with existing unmet need and the way forward through the Dec 2024 NPPF transitional period into the new Planning system.
10/03/25 - 06/05/25	Harborough Local Plan Reg 19 consultation	Representations received. (See Section 6.0 for summary of representations and any post-consultation engagement)
12/03/25	HDC sent Draft DtC SoCG	For review/agreement/signing
30/05/25	HDC DtC SoCG with Blaby District Council (March 2025)	DtC SoCG signed by Blaby District Council.

Harborough Duty to Cooperate Statement of Compliance

Charnwood Borough Council

Date	Brief Description of the activity	Key outputs
Recurring	Regular MAG, SPG and POF local plan managers group meetings	<ul style="list-style-type: none"> Regular Harborough Local Plan updates provided
Various	Production of joint evidence base documents.	<p>On behalf of all Leicester and Leicestershire authorities:</p> <ul style="list-style-type: none"> Warehousing and Logistics in Leicester and Leicestershire (GL Hearn, April 2021) Housing and Employment Needs Report (Iceni, June 2022) and Housing Distribution/ Employment Distribution Papers Strategic B8 Distribution and Warehousing Study (Iceni, in production) Housing and Employment Needs Assessment (HENA)(Iceni, in production)
June 2022	Production of the Leicester and Leicestershire Authorities SoCG relating to Housing and Employment Needs.	Outlining how strategic matters relating to the DtC, housing and employment needs to 2036, unmet need to 2036, and the apportionment of unmet need to 2036, have been addressed within the area.
16/01/24-27/02/24	Harborough Local Plan Regulation 18 consultation	Understanding of emerging Local Plan issues and options.
21/03/24	Meeting of the Leicester and Leicestershire authorities to discuss approaches to self-build housing	Discussions relating to relevant Local Plan policies, monitoring, promotion of the self-build register, applications and appeals relating to self-build housing, and the sharing of information relating to relevant appeal decisions.
30/04/24	<p>Online DtC workshop with all prescribed DtC bodies.</p> <ul style="list-style-type: none"> The Council attended the workshop. All workshop materials were sent to the Council for review and comment. 	<p>All attendees were provided with updates on:</p> <ul style="list-style-type: none"> The Regulation 18 Issues and Options Consultation responses The emerging Local Plan and spatial strategy Proposed DtC engagement activities Approach to the production of a DtC SoCG Identified potential strategic cross-boundary matters Emerging evidence base studies
21/06/24	Leicester and Leicestershire Partnership meeting. Officer level meeting for all Leicester and Leicestershire authorities.	Discussions on the approach being taken by Leicestershire authorities in Local Plans to address strategic matters. Agreement to continue to

Harborough Duty to Cooperate Statement of Compliance

Date	Brief Description of the activity	Key outputs
		meet regularly to consider these issues further.
17/09/24	DtC Strategic B8 meeting with Blaby District Council, Charnwood Borough Council, Hinckley and Bosworth Borough Council, Leicestershire County Council, North West Leicestershire District Council, and the Leicester and Leicestershire Partnership	The meeting included discussions regarding: <ul style="list-style-type: none"> • The preparation of the Harborough Local Plan • Emerging need for strategic B8 and potential allocations • Approach to producing statements of common ground • Approach to addressing strategic B8 needs for each authority
10/10/24	Online DtC Workshop with all prescribed DtC bodies. <ul style="list-style-type: none"> • The Council attended the workshop. All workshop materials were sent to the Council for review and comment.	All attendees were provided with updates on: <ul style="list-style-type: none"> • The emerging Local Plan and spatial strategy • DtC engagement activities undertaken to date • Identified strategic cross-boundary matters, and how they are being addressed through the production of the Local Plan. • Approach to the production of DtC SoCG
11/10/24	Liaised informally to invite comments on emerging draft Regulation 19 Local Plan sections and policies.	Comments provided on the draft Local Plan. No new strategic cross boundary matters or concerns raised which need to be addressed through additional Duty to Cooperate related activities.
01/11/24	Provided with the draft strategic B8 Iceni study commissioned by HDC for review and comment.	Understanding of emerging evidence
Feb 2025	Production of Duty to Co-operate Statement: Transitional arrangements in respect of unmet need (February 2025)	Supporting the progression and adoption of current and future Local Plans through confirming the agreed position of all partner councils on arrangements to deal with existing unmet need and the way forward through the Dec 2024 NPPF transitional period into the new Planning system.
10/03/25 - 06/05/25	Harborough Local Plan Reg 19 consultation	Representations received. (See Section 6.0 for summary of representations and any post-consultation engagement)
12/03/25	HDC sent Draft DtC SoCG	For review/agreement/signing
08/07/25	HDC DtC SoCG with Charnwood Borough Council (July 2025)	DtC SoCG signed by Charnwood Borough Council

Harborough Duty to Cooperate Statement of Compliance

Hinckley and Bosworth Borough Council

Date	Brief Description of the activity	Key outputs
Recurring	Regular MAG, SPG and POF local plan managers group meetings	<ul style="list-style-type: none"> Regular Harborough Local Plan updates provided
Recurring	A5 Member Partnership. Quarterly meeting to discuss strategic matters associated with the A5 for all authorities on the route, including neighbouring Leicestershire and Warwickshire authorities.	Discussion relating to potential mitigation measures and safety issues.
Various	Production of joint evidence base documents.	<p>On behalf of all Leicester and Leicestershire authorities:</p> <ul style="list-style-type: none"> Warehousing and Logistics in Leicester and Leicestershire (GL Hearn, April 2021) Housing and Employment Needs Report (Iceni, June 2022) and Housing Distribution/ Employment Distribution Papers Strategic B8 Distribution and Warehousing Study (Iceni, in production) Housing and Employment Needs Assessment (HENA)(Iceni, in production) <p>On behalf of the South Leicestershire authorities (Blaby, Harborough, Hinckley and Bosworth, Oadby and Wigston):</p> <ul style="list-style-type: none"> South Leicestershire Joint transport evidence (Jan 2025, AECOM for Leicestershire County Council) <p>On behalf of Blaby, Harborough, Hinckley and Bosworth, Oadby and Wigston:</p> <ul style="list-style-type: none"> Joint Water Cycle Scoping Study (JBA, December 2024)
November 2021	South Leicestershire Local Plan Making SoCG	Production of a SoCG prepared in the context of identified key cross boundary issues that are specific to the South Leicestershire (Blaby, Harborough, Oadby and Wigston) authorities, outlining how strategic matters relating to unmet needs, transport, infrastructure, development pressures, and evidence base production, are being considered between the authorities.

Harborough Duty to Cooperate Statement of Compliance

Date	Brief Description of the activity	Key outputs
		H&BBC are a signatory to this SoCG as a neighbouring authority.
June 2022	Production of the Leicester and Leicestershire Authorities SoCG relating to Housing and Employment Needs.	Outlining how strategic matters relating to the DtC, housing and employment needs to 2036, unmet need to 2036, and the apportionment of unmet need to 2036, have been addressed within the area.
16/01/24-27/02/24	Harborough Local Plan Regulation 18 consultation	Response to the consultation relating to the proposed options and related issues
30/04/24	<p>Online DtC workshop with all prescribed DtC bodies.</p> <ul style="list-style-type: none"> • The Council attended the workshop. <p>All workshop materials were sent to the Council for review and comment.</p>	<p>All attendees were provided with updates on:</p> <ul style="list-style-type: none"> • The Regulation 18 Issues and Options Consultation responses • The emerging Local Plan and spatial strategy • Proposed DtC engagement activities • Approach to the production of a DtC SoCG • Identified potential strategic cross-boundary matters • Emerging evidence base studies
21/06/24	Leicester and Leicestershire Partnership meeting. Officer level meeting for all Leicester and Leicestershire authorities.	Discussions on the approach being taken by Leicestershire authorities in Local Plans to address strategic matters. Agreement to continue to meet regularly to consider these issues further.
17/07/24	Potential Aligned Approach to Transport meeting	Discussion on the potential need for a south Leicestershire transport related statement of common ground, production of associated transport related topic papers, and the delivery of strategic infrastructure.
17/09/24	DtC Strategic B8 meeting with Blaby District Council, Charnwood Borough Council, Hinckley and Bosworth Borough Council, Leicestershire County Council, North West Leicestershire District Council, and the Leicester and Leicestershire Partnership	<p>The meeting included discussions regarding:</p> <ul style="list-style-type: none"> • The preparation of the Harborough Local Plan • Emerging need for strategic B8 and potential allocations • Approach to producing statements of common ground • Approach to addressing strategic B8 needs for each authority
10/10/24	Online DtC Workshop with all prescribed DtC bodies.	All attendees were provided with updates on:

Harborough Duty to Cooperate Statement of Compliance

Date	Brief Description of the activity	Key outputs
	<ul style="list-style-type: none"> The Council attended the workshop. <p>All workshop materials were sent to the Council for review and comment.</p>	<ul style="list-style-type: none"> The emerging Local Plan and spatial strategy DtC engagement activities undertaken to date Identified strategic cross-boundary matters, and how they are being addressed through the production of the Local Plan. Approach to the production of DtC SoCG
11/10/24	Liaised informally to invite comments on emerging draft Regulation 19 Local Plan sections and policies.	Comments provided on the draft Local Plan. No new strategic cross boundary matters or concerns raised which need to be addressed through additional Duty to Cooperate related activities.
01/11/24	Provided with the draft strategic B8 Iceni study commissioned by HDC for review and comment.	Understanding of emerging evidence
Feb 2025	Production of Duty to Co-operate Statement: Transitional arrangements in respect of unmet need (February 2025)	Supporting the progression and adoption of current and future Local Plans through confirming the agreed position of all partner councils on arrangements to deal with existing unmet need and the way forward through the Dec 2024 NPPF transitional period into the new Planning system.
10/03/25 - 06/05/25	Harborough Local Plan Reg 19 consultation	Representations received (see Section 6.0 for summary of representations and any post-consultation engagement)
12/03/25	HDC sent Draft DtC SoCG	For review/agreement/signing.
23/07/25	HDC DtC SoCG with Hinckley and Bosworth Borough Council (March 2025)	DtC SoCG signed by Hinckley and Bosworth Borough Council

Leicester City Council

Date	Brief Description of the activity	Key outputs
Recurring	Regular MAG, SPG and POF local plan managers group meetings	<ul style="list-style-type: none"> Regular Harborough Local Plan updates provided
Various	Production of joint evidence base documents.	<p>On behalf of all Leicester and Leicestershire authorities:</p> <ul style="list-style-type: none"> Warehousing and Logistics in Leicester and Leicestershire (GL Hearn, April 2021)

Harborough Duty to Cooperate Statement of Compliance

Date	Brief Description of the activity	Key outputs
		<ul style="list-style-type: none"> • Housing and Employment Needs Report (Iceni, June 2022) and Housing Distribution/ Employment Distribution Papers • Strategic B8 Distribution and Warehousing Study (Iceni, in production) • Housing and Employment Needs Assessment (HENA)(Iceni, in production)
June 2022	Production of the Leicester and Leicestershire Authorities SoCG relating to Housing and Employment Needs.	Outlining how strategic matters relating to the DtC, housing and employment needs to 2036, unmet need to 2036, and the apportionment of unmet need to 2036, have been addressed within the area.
03/08/23	LCC / HDC DtC meeting	<ul style="list-style-type: none"> • Update on Local Plan production from both authorities • HDC representation on the Regulation 19 Local Plan
16/01/24-27/02/24	Harborough Local Plan Regulation 18 consultation	Consultation response provided relating to the proposed options and related issues
21/03/24	Meeting of the Leicester and Leicestershire authorities to discuss approaches to self-build housing	Discussions relating to relevant Local Plan policies, monitoring, promotion of the self-build register, applications and appeals relating to self-build housing, and the sharing of information relating to relevant appeal decisions.
30/04/24	<p>Online DtC workshop with all prescribed DtC bodies.</p> <ul style="list-style-type: none"> • The Council attended the workshop. • All workshop materials were sent to the Council for review and comment. 	<p>All attendees were provided with updates on:</p> <ul style="list-style-type: none"> • The Regulation 18 Issues and Options Consultation responses • The emerging Local Plan and spatial strategy • Proposed DtC engagement activities • Approach to the production of a DtC SoCG • Identified potential strategic cross-boundary matters • Emerging evidence base studies
29/05/24	LCC / HDC DtC meeting	<p>Discussion on the following:</p> <ul style="list-style-type: none"> • Update on Leicester Local Plan • Harborough District Council Local Plan update
21/06/24	Leicester and Leicestershire Partnership meeting. Officer level meeting for all Leicester and Leicestershire authorities.	Discussions on the approach being taken by Leicestershire authorities in Local Plans to address strategic matters. Agreement to continue to meet

Harborough Duty to Cooperate Statement of Compliance

Date	Brief Description of the activity	Key outputs
		regularly to consider these issues further.
08/07/24	LCC / HDC DtC meeting	<ul style="list-style-type: none"> • Update on Leicester Local Plan • Harborough District Council Local Plan update
Sept 2024	Production of the Leicester and Leicestershire Authorities SoCG relating to the plan period for the Leicester City Local Plan.	Production of a SoCG relating to Leicester City's Local Plan
17/09/24	Invitation to a DtC Strategic B8 meeting.	<p>The meeting included discussions regarding:</p> <ul style="list-style-type: none"> • The preparation of the Harborough Local Plan • Emerging need for strategic B8 and potential allocations • Approach to producing statements of common ground • Approach to addressing strategic B8 needs for each authority
10/10/24	Online DtC Workshop with all prescribed DtC bodies. All workshop materials were sent to the Council for review and comment.	<p>All attendees were provided with updates on:</p> <ul style="list-style-type: none"> • The emerging Local Plan and spatial strategy • DtC engagement activities undertaken to date • Identified strategic cross-boundary matters, and how they are being addressed through the production of the Local Plan. • Approach to the production of DtC SoCG
11/10/24	Liaised informally to invite comments on emerging draft Regulation 19 Local Plan sections and policies.	Comments provided
01/11/24	Provided with the draft strategic B8 Icen study commissioned by HDC for review and comment.	Understanding of emerging evidence
27/11/24	LCC / HDC DtC meeting	Agreement to continue to collaborate on cross boundary matters
18/12/24	Meeting with LCC, Oadby and Wigston Borough Council, and consultants TEP to discuss the draft Green Wedges Assessment being produced on behalf of HDC.	<ul style="list-style-type: none"> • Update on the HDC Green Wedges Review undertaken by TEP. • Update on similar work being undertaken by other authorities. • Agreed that the draft Green Wedges Assessment report will be circulated for review following the meeting.
Feb 2025	Production of Duty to Co-operate Statement: Transitional arrangements in respect of unmet	Supporting the progression and adoption of current and future Local Plans through confirming the agreed position of all partner councils on

Harborough Duty to Cooperate Statement of Compliance

Date	Brief Description of the activity	Key outputs
	need to support Leicester City Local Plan (February 2025).	arrangements to deal with existing unmet need and the way forward through the Dec 2024 NPPF transitional period into the new Planning system.
10/03/25 - 06/05/25	Harborough Local Plan Reg 19 consultation	Representations received. (See Section 6.0 for summary of representations and any post-consultation engagement)
12/03/25	HDC sent Draft DtC SoCG	For review/agreement/signing

Leicestershire County Council

Date	Brief Description of the activity	Key outputs
Recurring	Regular MAG, SPG and POF local plan managers group meetings	<ul style="list-style-type: none"> Regular Harborough Local Plan updates provided
Recurring	A5 Member Partnership. Quarterly meeting to discuss strategic matters associated with the A5 for all authorities on the route, including neighbouring Leicestershire and Warwickshire authorities.	Discussion relating to potential mitigation measures and safety issues.
Various	Participation in the production of joint evidence base documents.	<p>On behalf of all Leicester and Leicestershire authorities:</p> <ul style="list-style-type: none"> Warehousing and Logistics in Leicester and Leicestershire (GL Hearn, April 2021) Housing and Employment Needs Report (Iceni, June 2022) and Housing Distribution/ Employment Distribution Papers Strategic B8 Distribution and Warehousing Study (Iceni, in production) Housing and Employment Needs Assessment (HENA)(Iceni, in production) <p>AECOM (for Leicestershire County Council): Preparation of South Leicestershire Joint Transport Evidence: Stage 1 (Jan 2025) for South Leicestershire authorities (Blaby, Harborough, Hinckley & Bosworth, Oadby & Wigston).</p>
Various	LCC / HDC meetings - Education	Discussions regarding education evidence to inform the Local Plan. This included a joint understanding of existing and forecast school capacity, the potential for on-site extension of

Harborough Duty to Cooperate Statement of Compliance

Date	Brief Description of the activity	Key outputs
		<p>schools and the need for new school provision.</p> <p>This cooperation informed the development strategy and site selection, particularly in relation to the level of growth in individual settlements. Joint understanding of the need for additional school place provision and the need for new schools informed the Infrastructure Delivery Plan, Local Plan policies on necessary infrastructure and relevant site allocation policies.</p>
Various	LCC / HDC meetings - Transport	<p>Discussions regarding transport evidence to inform the Local Plan. Joint understanding of capacity constraints on the network and the transport impacts of Local Plan growth. Joint understanding of the need for appropriate evidence including the Joint Transport Evidence.</p> <p>This evidence informed the development strategy and increased understanding of the potential package of measures required, which has informed the Infrastructure Delivery Plan, site selection and relevant policies within the Local Plan.</p>
June 2022	Production of the Leicester and Leicestershire Authorities SoCG relating to Housing and Employment Needs.	<ul style="list-style-type: none"> • Outlining how strategic matters relating to the DtC, housing and employment needs to 2036, unmet need to 2036, and the apportionment of unmet need to 2036, have been addressed within the area.
16/01/24-27/02/24	Harborough Local Plan Regulation 18 consultation	Consultation response provided relating to the proposed options and related issues
30/04/24	<p>Online DtC workshop with all prescribed DtC bodies.</p> <ul style="list-style-type: none"> • The Council attended the workshop. • All workshop materials were sent to the Council for review and comment. 	<p>All attendees were provided with updates on:</p> <ul style="list-style-type: none"> • The Regulation 18 Issues and Options Consultation responses • The emerging Local Plan and spatial strategy • Proposed DtC engagement activities • Approach to the production of a DtC SoCG • Identified potential strategic cross-boundary matters • Emerging evidence base studies

Harborough Duty to Cooperate Statement of Compliance

Date	Brief Description of the activity	Key outputs
21/06/24	Leicester and Leicestershire Partnership meeting. Officer level meeting for all Leicester and Leicestershire authorities.	Discussions on the approach being taken by Leicestershire authorities in Local Plans to address strategic matters. Agreement to continue to meet regularly to consider these issues further.
17/09/24	DtC Strategic B8 meeting with Blaby District Council, Charnwood Borough Council, Hinckley and Bosworth Borough Council, Leicestershire County Council, North West Leicestershire District Council, and the Leicester and Leicestershire Partnership	The meeting included discussions regarding: <ul style="list-style-type: none"> • The preparation of the Harborough Local Plan • Emerging need for strategic B8 and potential allocations • Approach to producing statements of common ground • Approach to addressing strategic B8 needs for each authority
10/10/24	Online DtC Workshop with all prescribed DtC bodies. <ul style="list-style-type: none"> • The Council attended the workshop. • All workshop materials were sent to the Council for review and comment. 	All attendees were provided with updates on: <ul style="list-style-type: none"> • The emerging Local Plan and spatial strategy • DtC engagement activities undertaken to date • Identified strategic cross-boundary matters, and how they are being addressed through the production of the Local Plan. • Approach to the production of DtC SoCG
11/10/24	Liaised informally to invite comments on emerging draft Regulation 19 Local Plan sections and policies.	Comments provided on the draft Local Plan. No new strategic cross boundary matters or concerns raised which need to be addressed through additional Duty to Cooperate related activities.
01/11/24	Provided with the draft strategic B8 Icenii study commissioned by HDC for review and comment.	Understanding of emerging evidence
Feb 2025	Production of Duty to Co-operate Statement: Transitional arrangements in respect of unmet need (February 2025)	Supporting the progression and adoption of current and future Local Plans through confirming the agreed position of all partner councils on arrangements to deal with existing unmet need and the way forward through the Dec 2024 NPPF transitional period into the new Planning system.
10/03/25 - 06/05/25	Harborough Local Plan Reg 19 consultation	Representations received. (See Section 6.0 for summary of representations and any post-consultation engagement)
12/03/25	HDC sent Draft DtC SoCG	For review/agreement/signing

Harborough Duty to Cooperate Statement of Compliance

Date	Brief Description of the activity	Key outputs
June 25 onwards	Series of meetings to discuss draft DtC SoCG, to agree final DtC SoCG and discussions around Transport/Education.	DtC SoCG signed by Leicestershire County Council following approval for signing at Cabinet on 12/9/25.

Melton Borough Council

Date	Brief Description of the activity	Key outputs
Recurring	Regular MAG, SPG and POF local plan managers group meetings	<ul style="list-style-type: none"> Regular Harborough Local Plan updates provided
Various	Production of joint evidence base documents.	<p>On behalf of all Leicester and Leicestershire authorities:</p> <ul style="list-style-type: none"> Warehousing and Logistics in Leicester and Leicestershire (GL Hearn, April 2021) Housing and Employment Needs Report (Iceni, June 2022) and Housing Distribution/ Employment Distribution Papers Strategic B8 Distribution and Warehousing Study (Iceni, in production) Housing and Employment Needs Assessment (HENA)(Iceni, in production)
June 2022	Production of the Leicester and Leicestershire Authorities SoCG relating to Housing and Employment Needs.	Outlining how strategic matters relating to the DtC, housing and employment needs to 2036, unmet need to 2036, and the apportionment of unmet need to 2036, have been addressed within the area.
16/01/24-27/02/24	Harborough Local Plan Regulation 18 consultation	Consultation response provided relating to the proposed options and related issues
21/03/24	Meeting of the Leicester and Leicestershire authorities to discuss approaches to self-build housing	Discussions relating to relevant Local Plan policies, monitoring, promotion of the self-build register, applications and appeals relating to self-build housing, and the sharing of information relating to relevant appeal decisions.
30/04/24	<p>Online DtC workshop with all prescribed DtC bodies.</p> <ul style="list-style-type: none"> The Council attended the workshop. All workshop materials were sent to the Council for review and comment. 	<p>All attendees were provided with updates on:</p> <ul style="list-style-type: none"> The Regulation 18 Issues and Options Consultation responses The emerging Local Plan and spatial strategy Proposed DtC engagement activities Approach to the production of a DtC SoCG

Harborough Duty to Cooperate Statement of Compliance

Date	Brief Description of the activity	Key outputs
		<ul style="list-style-type: none"> • Identified potential strategic cross-boundary matters • Emerging evidence base studies
21/06/24	Leicester and Leicestershire Partnership meeting. Officer level meeting for all Leicester and Leicestershire authorities.	Discussions on the approach being taken by Leicestershire authorities in Local Plans to address strategic matters. Agreement to continue to meet regularly to consider these issues further.
17/09/24	Invitation to a DtC Strategic B8 meeting.	<p>The meeting included discussions regarding:</p> <ul style="list-style-type: none"> • The preparation of the Harborough Local Plan • Emerging need for strategic B8 and potential allocations • Approach to producing statements of common ground • Approach to addressing strategic B8 needs for each authority
10/10/24	<p>Online DtC Workshop with all prescribed DtC bodies.</p> <ul style="list-style-type: none"> • The Council attended the workshop. • All workshop materials were sent to the Council for review and comment. 	<p>All attendees were provided with updates on:</p> <ul style="list-style-type: none"> • The emerging Local Plan and spatial strategy • DtC engagement activities undertaken to date • Identified strategic cross-boundary matters, and how they are being addressed through the production of the Local Plan. • Approach to the production of DtC SoCG
11/10/24	Liaised informally to invite comments on emerging draft Regulation 19 Local Plan sections and policies.	Understanding of emerging proposals
01/11/24	Provided with the draft strategic B8 Icen study commissioned by HDC for review and comment.	Understanding of emerging evidence
Feb 2025	Production of Duty to Co-operate Statement: Transitional arrangements in respect of unmet need (February 2025)	Supporting the progression and adoption of current and future Local Plans through confirming the agreed position of all partner councils on arrangements to deal with existing unmet need and the way forward through the Dec 2024 NPPF transitional period into the new Planning system.
10/03/25 - 06/05/25	Harborough Local Plan Reg 19 consultation	Representations received. (See Section 6.0 for summary of representations and any post-consultation engagement)
12/03/25	HDC sent Draft DtC SoCG	For review/agreement/signing

Harborough Duty to Cooperate Statement of Compliance

Date	Brief Description of the activity	Key outputs
15/07/2025	HDC DtC SoCG with Melton Borough Council (March 2025)	DtC SoCG signed by Melton Borough Council

North West Leicestershire District Council

Date	Brief Description of the activity	Key outputs
Recurring	Regular MAG, SPG and POF local plan managers group meetings	<ul style="list-style-type: none"> Regular Harborough Local Plan updates provided
Various	Production of joint evidence base documents.	<p>On behalf of all Leicester and Leicestershire authorities:</p> <ul style="list-style-type: none"> Warehousing and Logistics in Leicester and Leicestershire (GL Hearn, April 2021) Housing and Employment Needs Report (Iceni, June 2022) and Housing Distribution/ Employment Distribution Papers Strategic B8 Distribution and Warehousing Study (Iceni, in production) Housing and Employment Needs Assessment (HENA)(Iceni, in production)
June 2022	Production of the Leicester and Leicestershire Authorities SoCG relating to Housing and Employment Needs.	Outlining how strategic matters relating to the DtC, housing and employment needs to 2036, unmet need to 2036, and the apportionment of unmet need to 2036, have been addressed within the area.
16/01/24-27/02/24	Harborough Local Plan Regulation 18 consultation	Response to the consultation relating to the proposed options and related issues
21/03/24	Meeting of the Leicester and Leicestershire authorities to discuss approaches to self-build housing	Discussions relating to relevant Local Plan policies, monitoring, promotion of the self-build register, applications and appeals relating to self-build housing, and the sharing of information relating to relevant appeal decisions.
30/04/24	<p>Online DtC workshop with all prescribed DtC bodies.</p> <ul style="list-style-type: none"> The Council attended the workshop. <p>All workshop materials were sent to the Council for review and comment.</p>	<p>All attendees were provided with updates on:</p> <ul style="list-style-type: none"> The Regulation 18 Issues and Options Consultation responses The emerging Local Plan and spatial strategy Proposed DtC engagement activities Approach to the production of a DtC SoCG Identified potential strategic cross-boundary matters Emerging evidence base studies

Harborough Duty to Cooperate Statement of Compliance

Date	Brief Description of the activity	Key outputs
21/06/24	Leicester and Leicestershire Partnership meeting. Officer level meeting for all Leicester and Leicestershire authorities.	Discussions on the approach being taken by Leicestershire authorities in Local Plans to address strategic matters. Agreement to continue to meet regularly to consider these issues further.
17/07/24	Potential Aligned Approach to Transport meeting	Discussion on the potential need for a south Leicestershire transport related statement of common ground, production of associated transport related topic papers, and the delivery of strategic infrastructure.
17/09/24	DtC Strategic B8 meeting with Blaby District Council, Charnwood Borough Council, Hinckley and Bosworth Borough Council, Leicestershire County Council, North West Leicestershire District Council, and the Leicester and Leicestershire Partnership	The meeting included discussions regarding: <ul style="list-style-type: none"> • The preparation of the Harborough Local Plan • Emerging need for strategic B8 and potential allocations • Approach to producing statements of common ground • Approach to addressing strategic B8 needs for each authority
10/10/24	Online DtC Workshop with all prescribed DtC bodies. <ul style="list-style-type: none"> • The Council attended the workshop. • All workshop materials were sent to the Council for review and comment. 	All attendees were provided with updates on: <ul style="list-style-type: none"> • The emerging Local Plan and spatial strategy • DtC engagement activities undertaken to date • Identified strategic cross-boundary matters, and how they are being addressed through the production of the Local Plan. • Approach to the production of DtC SoCG
11/10/24	Liaised informally to invite comments on emerging draft Regulation 19 Local Plan sections and policies.	Understanding of emerging proposals
01/11/24	Provided with the draft strategic B8 Icení study commissioned by HDC for review and comment.	Comments provided
Feb 2025	Production of Duty to Co-operate Statement: Transitional arrangements in respect of unmet need (February 2025)	Supporting the progression and adoption of current and future Local Plans through confirming the agreed position of all partner councils on arrangements to deal with existing unmet need and the way forward through the Dec 2024 NPPF transitional period into the new Planning system.
10/03/25 - 06/05/25	Harborough Local Plan Reg 19 consultation	Representations received. (See Section 6.0)

Harborough Duty to Cooperate Statement of Compliance

Date	Brief Description of the activity	Key outputs
12/03/25	HDC sent Draft DtC SoCG	For review/agreement/signing
23/07/25	HDC DtC SoCG with North West Leicestershire District Council (March 2025)	DtC SoCG signed by North West Leicestershire District Council

Oadby and Wigston Borough Council

Date	Brief Description of the activity	Key outputs
Recurring	Regular MAG, SPG and POF local plan managers group meetings	<ul style="list-style-type: none"> Regular Harborough Local Plan updates provided
Recurring usually every 2-3 weeks since August 2024.	Regular HDC / O&WBC DtC meetings	<p>Specific items vary. In summary, the meetings regularly address the following topics:</p> <ul style="list-style-type: none"> Local Plan production updates The content of emerging draft HDC Local Plan policies Updates on the production of evidence base documents, particularly relating to viability, transport, Green Wedges, flood risk assessments and infrastructure evidence Infrastructure, such as local healthcare and education needs The production of a memorandum of understanding (MOU) / SoCG between the authorities regarding cross boundary strategic site allocations. Agreed consistent policy wording relating to the cross-boundary site to be included in each emerging draft Local Plan.
Various	Production of joint evidence base documents.	<p>On behalf of all Leicester and Leicestershire authorities:</p> <ul style="list-style-type: none"> Warehousing and Logistics in Leicester and Leicestershire (GL Hearn, April 2021) Housing and Employment Needs Report (Iceni, June 2022) and Housing Distribution/ Employment Distribution Papers Strategic B8 Distribution and Warehousing Study (Iceni, in production) Housing and Employment Needs Assessment (HENA)(Iceni, in production)

Harborough Duty to Cooperate Statement of Compliance

Date	Brief Description of the activity	Key outputs
		<p>On behalf of the South Leicestershire authorities (Blaby, Harborough, Hinckley & Bosworth, Oadby and Wigston):</p> <ul style="list-style-type: none"> • South Joint transport evidence: Stage 1 (Jan 2025, AECOM for Leicestershire County Council) <p>On behalf of Blaby, Harborough, Hinckley and Bosworth, Oadby and Wigston:</p> <p>Joint Water Cycle Scoping Study (JBA, December 2024)</p>
November 2021	South Leicestershire Local Plan Making SoCG	<ul style="list-style-type: none"> • Production of a SoCG prepared in the context of identified key cross boundary issues that are specific to the South Leicestershire (Blaby, Harborough, Oadby and Wigston) authorities, outlining how strategic matters relating to unmet needs, transport, infrastructure, development pressures, and evidence base production, are being considered between the authorities.
June 2022	Production of the Leicester and Leicestershire Authorities SoCG relating to Housing and Employment Needs.	Outlining how strategic matters relating to the DtC, housing and employment needs to 2036, unmet need to 2036, and the apportionment of unmet need to 2036, have been addressed within the area.
21/09/23	HDC / O&WBC DtC meeting	<p>Discussions on the following:</p> <ul style="list-style-type: none"> • Local Plan Update • Housing Need • Infrastructure Requirements – need for cross boundary contributions • Joint Evidence Base – approach to commissioning viability evidence • Cross Boundary Issues • Green Wedges – importance of retaining the green wedges where possible • Cross Boundary HIA
16/01/24–27/02/24	Harborough Local Plan Regulation 18 consultation	Understanding of emerging Local Plan issues and options.
21/03/24	Meeting of the Leicester and Leicestershire authorities to discuss approaches to self-build housing	Discussions relating to relevant Local Plan policies, monitoring, promotion of the self-build register, applications and appeals relating to self-build housing,

Harborough Duty to Cooperate Statement of Compliance

Date	Brief Description of the activity	Key outputs
		and the sharing of information relating to relevant appeal decisions.
25/04/24	HDC / O&WBC DtC meeting	<ul style="list-style-type: none"> • Local Plan update and timescales • Strategic priorities • Joint evidence base – agreement to check capacity levels for health centres and surgeries in O&W Borough • Individual evidence base • County wide work
30/04/24	<p>Online DtC workshop with all prescribed DtC bodies.</p> <ul style="list-style-type: none"> • The Council attended the workshop. • All workshop materials were sent to the Council for review and comment. 	<p>All attendees were provided with updates on:</p> <ul style="list-style-type: none"> • The Regulation 18 Issues and Options Consultation responses • The emerging Local Plan and spatial strategy • Proposed DtC engagement activities • Approach to the production of a DtC SoCG • Identified potential strategic cross-boundary matters • Emerging evidence base studies
20/05/24	HDC / O&WBC DtC meeting	<ul style="list-style-type: none"> • SHELAA site assessment • Detailed site assessment • Infrastructure Delivery Plan • Highways and transport evidence • Other site wide evidence • Agreed that: <ul style="list-style-type: none"> ○ Further discussion required on a site allocation design guide ○ Joint meeting with education required ○ Cross-boundary assessment for the Land South of Gartree Road (LSGR) site required for SFRA and BNG
21/06/24	Leicester and Leicestershire Partnership meeting. Officer level meeting for all Leicester and Leicestershire authorities.	Discussions on the approach being taken by Leicestershire authorities in Local Plans to address strategic matters. Agreement to continue to meet regularly to consider these issues further.
11/07/24	HDC / O&WBC DtC meeting	<ul style="list-style-type: none"> • Secretariat arrangements • Draft Memorandum of Understanding – agreement to comment on draft • Emerging joint evidence – agreement to share cross boundary SHELAA outputs and the costs of evidence base studies

Harborough Duty to Cooperate Statement of Compliance

Date	Brief Description of the activity	Key outputs
		<ul style="list-style-type: none"> • Site promoter evidence • Site allocation policy • Agreement to meeting with the County Council on education matters
17/07/24	Potential Aligned Approach to Transport meeting	Discussion on the potential need for a south Leicestershire transport related statement of common ground, production of associated transport related topic papers, and the delivery of strategic infrastructure.
17/09/24	Invitation to a DtC Strategic B8 meeting.	<p>The meeting included discussions regarding:</p> <ul style="list-style-type: none"> • The preparation of the Harborough Local Plan • Emerging need for strategic B8 and potential allocations • Approach to producing statements of common ground • Approach to addressing strategic B8 needs for each authority
10/10/24	<p>Online DtC Workshop with all prescribed DtC bodies.</p> <ul style="list-style-type: none"> • The Council attended the workshop. • All workshop materials were sent to the Council for review and comment. 	<p>All attendees were provided with updates on:</p> <ul style="list-style-type: none"> • The emerging Local Plan and spatial strategy • DtC engagement activities undertaken to date • Identified strategic cross-boundary matters, and how they are being addressed through the production of the Local Plan. • Approach to the production of DtC SoCG
11/10/24	Liaised informally to invite comments on emerging draft Regulation 19 Local Plan sections and policies.	Understanding of emerging proposals
01/11/24	Provided with the draft strategic B8 Icen study commissioned by HDC for review and comment.	Understanding of emerging evidence
18/12/24	Meeting with LCC, Oadby and Wigston Borough Council, and consultants TEP to discuss the draft Green Wedges Assessment being produced on behalf of HDC.	<ul style="list-style-type: none"> • Update on the HDC Green Wedges Review undertaken by TEP. • Update on similar work being undertaken by other authorities. • Agreed that the draft Green Wedges Assessment report will be circulated for review following the meeting.
Feb 2025	Production of Duty to Co-operate Statement: Transitional arrangements in respect of unmet need (February 2025)	Supporting the progression and adoption of current and future Local Plans through confirming the agreed position of all partner councils on

Date	Brief Description of the activity	Key outputs
		arrangements to deal with existing unmet need and the way forward through the Dec 2024 NPPF transitional period into the new Planning system.
10/03/25-06/05/25	Harborough Local Plan Reg 19 consultation	Representations received. (See Section 6.0 for summary of representations and any post-consultation engagement)
12/03/25	HDC sent Draft DtC SoCG	For review/agreement/signing
29/05/25	HDC DtC SoCG with Oadby & Wigston Borough Council (May 2025)	DtC SoCG signed by Oadby & Wigston Borough Council

3.3 Engagement with non-Leicestershire local authorities

3.3.1 Harborough District Council shares its western boundary with Rugby Borough Council/Warwickshire County Council, with West Northamptonshire Council and North Northamptonshire Council to the south and south-east respectively and with Rutland County Council to the east. To support the production of the Local Plan, the Council has sought to engage on a regular basis with surrounding non-Leicestershire local authorities.

3.3.2 The following tables provide a summary of engagement activities undertaken with these non-Leicestershire local authorities up to up to Regulation 19 consultation on the draft Harborough Local Plan and, where relevant, the signing of DtC SoCGs.

Post Regulation 19 engagement is set out in Section 6.0.

North Northamptonshire Council

Date	Brief Description of the activity	Key outputs
16/01/24-27/02/24	Harborough Local Plan Regulation 18 consultation	<ul style="list-style-type: none"> Response to the consultation relating to the proposed options and related issues
30/04/24	<p>Online DtC workshop with all prescribed DtC bodies.</p> <ul style="list-style-type: none"> The Council attended the workshop. All workshop materials were sent to the Council for review and comment. 	<p>All attendees were provided with updates on:</p> <ul style="list-style-type: none"> The Regulation 18 Issues and Options Consultation responses The emerging Local Plan and spatial strategy Proposed DtC engagement activities Approach to the production of a DtC SoCG Identified potential strategic cross-boundary matters Emerging evidence base studies

Harborough Duty to Cooperate Statement of Compliance

Date	Brief Description of the activity	Key outputs
30/09/24	DtC Strategic B8 meeting	The meeting included discussions regarding: <ul style="list-style-type: none"> • The preparation of the Harborough Local Plan • Emerging need for strategic B8 and proposed allocations within Harborough District (including the potential for growth at Magna Park) • Approach to producing statements of common ground • Approach to addressing strategic B8 needs for North Northants
10/10/24	Online DtC Workshop with all prescribed DtC bodies. <ul style="list-style-type: none"> • The Council attended the workshop. • All workshop materials were sent to the Council for review and comment. 	All attendees were provided with updates on: <ul style="list-style-type: none"> • The emerging Local Plan and spatial strategy • DtC engagement activities undertaken to date • Identified strategic cross-boundary matters, and how they are being addressed through the production of the Local Plan • Approach to the production of DtC SoCG
11/10/24	Liaised informally to invite comments on emerging draft Regulation 19 Local Plan sections and policies.	Understanding of emerging proposals
01/11/24	Provided with the draft strategic B8 Icenii study commissioned by HDC for review and comment.	Understanding of emerging evidence
10/03/25 - 06/05/25	Harborough Local Plan Reg 19 consultation	No representations received.
12/03/25	HDC sent Draft DtC SoCG	For review/agreement/signing
12/08/25	HDC DtC SoCG with North Northamptonshire Council (March 2025)	DtC SoCG signed by North Northamptonshire Council

Rugby Borough Council

Date	Brief Description of the activity	Key outputs
Recurring	A5 Member Partnership. Quarterly meeting to discuss strategic matters associated with the A5 for all authorities on the route, including neighbouring Leicestershire and Warwickshire authorities.	Discussion relating to potential mitigation measures and safety issues.
16/01/24-27/02/24	Harborough Local Plan Regulation 18 consultation	Response to the consultation related to the following:

Harborough Duty to Cooperate Statement of Compliance

Date	Brief Description of the activity	Key outputs
		<ul style="list-style-type: none"> • Consider online sales growth which may diminish in future for warehousing and logistics. • An allowance should be made for recycling existing sites of warehousing and logistics. • Concern regarding the expansion of Magna Park given capacity issues on the A5, its existing size, and rural location. • Do not support provision of main town centre uses at Magna Park.
30/04/24	<p>Online DtC workshop with all prescribed DtC bodies.</p> <ul style="list-style-type: none"> • The Council attended the workshop. <p>All workshop materials were sent to the Council for review and comment.</p>	<p>All attendees were provided with updates on:</p> <ul style="list-style-type: none"> • The Regulation 18 Issues and Options Consultation responses • The emerging Local Plan and spatial strategy • Proposed DtC engagement activities • Approach to the production of a DtC SoCG • Identified potential strategic cross-boundary matters • Emerging evidence base studies
24/09/24	DtC Strategic B8 meeting	<p>The meeting included discussions regarding:</p> <ul style="list-style-type: none"> • The preparation of the Harborough Local Plan • Emerging need for strategic B8 and proposed allocations within Harborough District (including the potential for growth at Magna Park) • Approach to producing statements of common ground • Approach to addressing strategic B8 needs for Rugby Borough •
10/10/24	<p>Online DtC Workshop with all prescribed DtC bodies.</p> <ul style="list-style-type: none"> • The Council attended the workshop. • All workshop materials were sent to the Council for review and comment. 	<p>All attendees were provided with updates on:</p> <ul style="list-style-type: none"> • The emerging Local Plan and spatial strategy • DtC engagement activities undertaken to date • Identified strategic cross-boundary matters, and how they are being addressed through the production of the Local Plan. • Approach to the production of DtC SoCG
11/10/24	Liaised informally to invite comments on emerging draft	Understanding of emerging proposals

Harborough Duty to Cooperate Statement of Compliance

Date	Brief Description of the activity	Key outputs
	Regulation 19 Local Plan sections and policies.	
01/11/24	Provided with the draft strategic B8 Icen study commissioned by HDC for review and comment.	Understanding of emerging evidence
10/03/25 - 06/05/25	Harborough Local Plan Reg 19 consultation	No representations received. (See Section 6.0 for post-regulation 19 engagement)
12/03/25	HDC sent Draft DtC SoCG	For review/agreement/signing
27/05/25	HDC DtC SoCG with Rugby Borough Council (March 2025)	DtC SoCG signed by Rugby Borough Council

Rutland County Council

Date	Brief Description of the activity	Key outputs
16/01/24-27/02/24	Harborough Local Plan Regulation 18 consultation	Understanding of emerging Local Plan issues and options.
30/04/24	Online DtC workshop with all prescribed DtC bodies. <ul style="list-style-type: none"> All workshop materials were sent to RCC for review and comments. 	All attendees were provided with updates on: <ul style="list-style-type: none"> The Regulation 18 Issues and Options Consultation responses The emerging Local Plan and spatial strategy Proposed DtC engagement activities Approach to the production of a DtC SoCG Identified potential strategic cross-boundary matters Emerging evidence base studies
10/10/24	Online DtC Workshop with all prescribed DtC bodies. <ul style="list-style-type: none"> All workshop materials were sent to the RCC for review and comments. 	All attendees were provided with updates on: <ul style="list-style-type: none"> The emerging Local Plan and spatial strategy DtC engagement activities undertaken to date Identified strategic cross-boundary matters, and how they are being addressed through the production of the Local Plan. Approach to the production of DtC SoCG
11/10/24	Liaised informally to invite comments on emerging draft Regulation 19 Local Plan sections and policies.	Understanding of emerging proposals
10/03/25 - 06/05/25	Harborough Local Plan Reg 19 consultation	Representation received. (See Section 6.0 for summary of representations and any post-consultation engagement)

Harborough Duty to Cooperate Statement of Compliance

Date	Brief Description of the activity	Key outputs
12/03/25	HDC sent Draft DtC SoCG	For review/agreement/signing. As Reg 19 representation confirmed that HDC had met DtC this was not pursued.

Warwickshire County Council

Date	Brief Description of the activity	Key outputs
Recurring	A5 Member Partnership. Quarterly meeting to discuss strategic matters associated with the A5 for all authorities on the route, including neighbouring Leicestershire and Warwickshire authorities.	Discussion relating to potential mitigation measures and safety issues.
16/01/24-27/02/24	Harborough Local Plan Regulation 18 consultation	Understanding of emerging Local Plan issues and options.
30/04/24	Online DtC workshop with all prescribed DtC bodies. <ul style="list-style-type: none"> All workshop materials were sent to WCC for review and comment. 	All attendees were provided with updates on: <ul style="list-style-type: none"> The Regulation 18 Issues and Options Consultation responses The emerging Local Plan and spatial strategy Proposed DtC engagement activities Approach to the production of a DtC SoCG Identified potential strategic cross-boundary matters Emerging evidence base studies
10/10/24	Online DtC Workshop with all prescribed DtC bodies. <ul style="list-style-type: none"> All workshop materials were sent to WCC for review and comment. 	All attendees were provided with updates on: <ul style="list-style-type: none"> The emerging Local Plan and spatial strategy DtC engagement activities undertaken to date Identified strategic cross-boundary matters, and how they are being addressed through the production of the Local Plan. Approach to the production of DtC SoCG
11/10/24	Liaised informally to invite comments on emerging draft Regulation 19 Local Plan sections and policies.	Understanding of emerging proposals
10/03/25 - 06/05/25	Harborough Local Plan Reg 19 consultation	Representations received. (See Section 6.0 for summary of representations and any post-consultation engagement)
12/03/25	HDC sent Draft DtC SoCG	For review/agreement/signing

Harborough Duty to Cooperate Statement of Compliance

West Northamptonshire Council

Date	Brief Description of the activity	Key outputs
16/01/24-27/02/24	Harborough Local Plan Regulation 18 consultation	<ul style="list-style-type: none"> Response to the consultation relating to the proposed options and related issues
30/04/24	<p>Online DtC workshop with all prescribed DtC bodies.</p> <ul style="list-style-type: none"> The Council attended the workshop. All workshop materials were sent to the Council for review and comment. 	<p>All attendees were provided with updates on:</p> <ul style="list-style-type: none"> The Regulation 18 Issues and Options Consultation responses The emerging Local Plan and spatial strategy Proposed DtC engagement activities Approach to the production of a DtC SoCG Identified potential strategic cross-boundary matters Emerging evidence base studies
23/09/24	DtC Strategic B8 meeting	<p>The meeting included discussions regarding:</p> <ul style="list-style-type: none"> The preparation of the Harborough Local Plan Emerging need for strategic B8 and proposed allocations within Harborough District (including the potential for growth at Magna Park) Approach to producing statements of common ground Approach to addressing strategic B8 needs for West Northants
10/10/24	<p>Online DtC Workshop with all prescribed DtC bodies.</p> <ul style="list-style-type: none"> The Council attended the workshop. All workshop materials were sent to the Council for review and comment. 	<p>All attendees were provided with updates on:</p> <ul style="list-style-type: none"> The emerging Local Plan and spatial strategy DtC engagement activities undertaken to date Identified strategic cross-boundary matters, and how they are being addressed through the production of the Local Plan. Approach to the production of DtC SoCG
11/10/24	Liaised informally to invite comments on emerging draft Regulation 19 Local Plan sections and policies.	Understanding of emerging proposals
01/11/24	Provided with the draft strategic B8 Icen study commissioned by HDC for review and comment.	Comments provided
10/03/25 - 06/05/25	Harborough Local Plan Reg 19 consultation	No representations received.
12/03/25	HDC sent Draft DtC SoCG	For review/agreement/signing

Date	Brief Description of the activity	Key outputs
23/09/25	HDC DtC SoCG with West Northamptonshire Council (March 2025)	DtC SoCG signed by West Northamptonshire Council

3.4 Engagement with prescribed Duty to Cooperate bodies

3.4.1 The following tables provide a summary of engagement activities undertaken with prescribed Duty to Cooperate bodies throughout the production of the Harborough Local Plan up to Regulation 19 consultation and, where relevant, the signing of DtC SoCGs. Post Regulation 19 engagement is set out in Section 6.0.

Environment Agency

Date	Brief Description of the activity	Key outputs
16/01/24-27/02/24	Harborough Local Plan Regulation 18 consultation	<ul style="list-style-type: none"> • Response to the consultation relating to the proposed options and related issues , and agreeing with identified strategic cross boundary matters.
30/04/24	<p>Online DtC workshop with all prescribed DtC bodies.</p> <ul style="list-style-type: none"> • The EA attended the workshop. • All workshop materials were sent to the EA for review and comment. 	<p>All attendees were provided with updates on:</p> <ul style="list-style-type: none"> • The Regulation 18 Issues and Options Consultation responses • The emerging Local Plan and spatial strategy • Proposed DtC engagement activities • Approach to the production of a DtC SoCG • Identified potential strategic cross-boundary matters • Emerging evidence base studies
10/10/24	<p>Online DtC Workshop with all prescribed DtC bodies.</p> <ul style="list-style-type: none"> • The EA attended the workshop. • All workshop materials were sent to the EA for review and comment. 	<p>All attendees were provided with updates on:</p> <ul style="list-style-type: none"> • The emerging Local Plan and spatial strategy • DtC engagement activities undertaken to date • Identified strategic cross-boundary matters, and how they are being addressed through the production of the Local Plan. • Approach to the production of DtC SoCG <p>The EA requested at the workshop that they should be included as part of any considerations regarding the impacts of site allocations within the emerging Local Plan.</p>

Harborough Duty to Cooperate Statement of Compliance

Date	Brief Description of the activity	Key outputs
11/10/24	Liaised informally to invite comments on emerging draft Regulation 19 Local Plan sections and policies.	Comments provided on the draft Local Plan. No new strategic cross boundary matters or concerns raised which need to be addressed through additional Duty to Cooperate related activities.
10/03/25 - 06/05/25	Harborough Local Plan Reg 19 consultation	Representations received. (see Section 6.0 for summary of representations)
12/03/25	HDC sent Draft DtC SoCG	For review/agreement/signing
28/05/25	HDC DtC SoCG with Environment Agency (March 2025)	DtC SoCG signed by Environment Agency.

Historic England

Date	Brief Description of the activity	Key outputs
16/01/24-27/02/24	Harborough Local Plan Regulation 18 consultation	Response to the consultation noted that Historic England agreed with identified strategic cross boundary matters
30/04/24	Online DtC workshop with all prescribed DtC bodies. <ul style="list-style-type: none"> All workshop materials were sent to Historic England for review and comment. 	All attendees were provided with updates on: <ul style="list-style-type: none"> The Regulation 18 Issues and Options Consultation responses The emerging Local Plan and spatial strategy Proposed DtC engagement activities Approach to the production of a DtC SoCG Identified potential strategic cross-boundary matters Emerging evidence base studies
10/10/24	Online DtC Workshop with all prescribed DtC bodies. <ul style="list-style-type: none"> All workshop materials were sent to Historic England for review and comment. 	All attendees were provided with updates on: <ul style="list-style-type: none"> The emerging Local Plan and spatial strategy DtC engagement activities undertaken to date Identified strategic cross-boundary matters, and how they are being addressed through the production of the Local Plan. Approach to the production of DtC SoCG
11/10/24	Liaised informally to invite comments on emerging draft Regulation 19 Local Plan sections and policies.	Response provided advice on the potential impacts of proposed site allocations on heritage assets, and recommendations of where a Heritage Impact Assessment may be required.
10/03/25 - 06/05/25	Harborough Local Plan Reg 19 consultation	Representations received. (See Section 6.0 for summary of

Harborough Duty to Cooperate Statement of Compliance

Date	Brief Description of the activity	Key outputs
		representations and any post-consultation engagement)
12/03/25	HDC sent Draft DtC SoCG	For review/agreement/signing
23/05/25	HDC DtC SoCG with Historic England (March 2025)	DtC SoCG signed by Historic England.

Natural England

Date	Brief Description of the activity	Key outputs
16/01/24-27/02/24	Harborough Local Plan Regulation 18 consultation	Response to the consultation relating to the proposed options and related issues
30/04/24	Online DtC workshop with all prescribed DtC bodies. <ul style="list-style-type: none"> Natural England attended the workshop. All workshop materials were sent to Natural England for review and comments. 	All attendees were provided with updates on: <ul style="list-style-type: none"> The Regulation 18 Issues and Options Consultation responses The emerging Local Plan and spatial strategy Proposed DtC engagement activities Approach to the production of a DtC SoCG Identified potential strategic cross-boundary matters Emerging evidence base studies
10/10/24	Online DtC Workshop with all prescribed DtC bodies. <ul style="list-style-type: none"> Natural England attended the workshop. All workshop materials were sent to Natural England for review and comments. 	All attendees were provided with updates on: <ul style="list-style-type: none"> The emerging Local Plan and spatial strategy DtC engagement activities undertaken to date Identified strategic cross-boundary matters, and how they are being addressed through the production of the Local Plan. Approach to the production of DtC SoCG
11/10/24	Liaised informally to invite comments on emerging draft Regulation 19 Local Plan sections and policies.	Comments provided on the draft Local Plan. No new strategic cross boundary matters or concerns raised which need to be addressed through additional Duty to Cooperate related activities.
10/03/25 - 06/05/25	Harborough Local Plan Reg 19 consultation	Representations received. (see Section 6.0 for summary of representations)
12/03/25	HDC sent Draft DtC SoCG	For review/agreement/signing
31/03/25	HDC DtC SoCG with Natural England (March 2025)	DtC SoCG signed by Natural England

Harborough Duty to Cooperate Statement of Compliance

Civil Aviation Authority

Date	Brief Description of the activity	Key outputs
16/01/24-27/02/24	Harborough Local Plan Regulation 18 consultation	Understanding of emerging Local Plan issues and options.
30/04/24	Online DtC workshop with all prescribed DtC bodies. <ul style="list-style-type: none"> All workshop materials were sent to the CAA for review and comments. 	All attendees were provided with updates on: <ul style="list-style-type: none"> The Regulation 18 Issues and Options Consultation responses The emerging Local Plan and spatial strategy Proposed DtC engagement activities Approach to the production of a DtC SoCG Identified potential strategic cross-boundary matters Emerging evidence base studies
10/10/24	Online DtC Workshop with all prescribed DtC bodies. <ul style="list-style-type: none"> All workshop materials were sent to the CAA for review and comments. 	All attendees were provided with updates on: <ul style="list-style-type: none"> The emerging Local Plan and spatial strategy DtC engagement activities undertaken to date Identified strategic cross-boundary matters, and how they are being addressed through the production of the Local Plan. Approach to the production of DtC SoCG
11/10/24	Liaised informally to invite comments on emerging draft Regulation 19 Local Plan sections and policies.	Understanding of emerging proposals
10/03/25 - 06/05/25	Harborough Local Plan Reg 19 consultation	No representations received.
12/03/25	HDC sent Draft DtC SoCG	For review/agreement/signing
16/09/25	Follow up email re: DtC SoCG sent to CAA	Confirmed no involvement necessary.

Homes England

Date	Brief Description of the activity	Key outputs
Monthly	Strategic Planning Group meetings. Homes England is an attendee of these meetings.	Monthly meetings to discuss strategic planning in each constituent authority.
16/01/24-27/02/24	Harborough Local Plan Regulation 18 consultation	Understanding of emerging Local Plan issues and options.
30/04/24	Online DtC workshop with all prescribed DtC bodies. <ul style="list-style-type: none"> All workshop materials were sent to Homes England for review and comments. 	All attendees were provided with updates on: <ul style="list-style-type: none"> The Regulation 18 Issues and Options Consultation responses The emerging Local Plan and spatial strategy

Harborough Duty to Cooperate Statement of Compliance

Date	Brief Description of the activity	Key outputs
		<ul style="list-style-type: none"> Proposed DtC engagement activities Approach to the production of a DtC SoCG Identified potential strategic cross-boundary matters Emerging evidence base studies
10/10/24	<p>Online DtC Workshop with all prescribed DtC bodies.</p> <ul style="list-style-type: none"> All workshop materials were sent to Homes England for review and comments. 	<p>All attendees were provided with updates on:</p> <ul style="list-style-type: none"> The emerging Local Plan and spatial strategy DtC engagement activities undertaken to date Identified strategic cross-boundary matters, and how they are being addressed through the production of the Local Plan. Approach to the production of DtC SoCG
11/10/24	Liaised informally to invite comments on emerging draft Regulation 19 Local Plan sections and policies.	Comments provided on the draft Local Plan. No new strategic cross boundary matters or concerns raised which need to be addressed through additional Duty to Cooperate related activities.
10/03/25 - 06/05/25	Harborough Local Plan Reg 19 consultation	Representations received but only as joint landowners of Land South of Gartree Road SDA proposed strategic allocation (See Section 6.0 for summary of representations and any post-consultation engagement).
12/03/25	HDC sent Draft DtC SoCG	For review/agreement/signing
27/06/25	HDC DtC SoCG with Homes England (March 2025)	DtC SoCG signed by Homes England

NHS Leicester, Leicestershire and Rutland Integrated Care Board/National Health Service (NHS) England

Date	Brief Description of the activity	Key outputs
16/01/24-27/02/24	Harborough Local Plan Regulation 18 consultation	<ul style="list-style-type: none"> Response to the consultation relating to the proposed options and related issues 1
21/02/24	Regular (quarterly) meeting between HDC and NHS	<p>The following matters were discussed:</p> <ul style="list-style-type: none"> Future meeting arrangements Approach to obtaining S106 contributions Strategies to improve services and facilities NHS comments to the Reg 18 consultation
30/04/24	Online DtC workshop with all prescribed DtC bodies.	All attendees were provided with updates on:

Harborough Duty to Cooperate Statement of Compliance

	<ul style="list-style-type: none"> The NHS attended the workshop. All workshop materials were sent to the NHS for review and comments. 	<ul style="list-style-type: none"> The Regulation 18 Issues and Options Consultation responses The emerging Local Plan and spatial strategy Proposed DtC engagement activities Approach to the production of a DtC SoCG Identified potential strategic cross-boundary matters Emerging evidence base studies
04/06/24	Regular (quarterly) meeting between HDC and NHS	<p>The following matters were discussed:</p> <ul style="list-style-type: none"> ICB team update: estates, place led, contracts, I&T HDC update, Local Plan production update S106 funding Healthcare related community engagement arrangements
10/10/24	<p>Online DtC Workshop with all prescribed DtC bodies.</p> <ul style="list-style-type: none"> The NHS attended the workshop. All workshop materials were sent to the NHS for review and comments. 	<p>All attendees were provided with updates on:</p> <ul style="list-style-type: none"> The emerging Local Plan and spatial strategy DtC engagement activities undertaken to date Identified strategic cross-boundary matters, and how they are being addressed through the production of the Local Plan. Approach to the production of DtC SoCG
11/10/24	Liaised informally to invite comments on emerging draft Regulation 19 Local Plan sections and policies.	Understanding of emerging proposals
10/03/25 - 06/05/25	Harborough Local Plan Reg 19 consultation	Representations received. (See Section 6.0 for summary of representations and any post-consultation engagement)
12/03/25	HDC sent Draft DtC SoCG	For review/agreement/signing
23/05/25	HDC DtC SoCG with NHS Leicester, Leicestershire and Rutland Integrated Care Board (March 2025)	DtC SoCG signed by NHS Leicester, Leicestershire and Rutland Integrated Care Board

Office of Rail and Road

Date	Brief Description of the activity	Key outputs
16/01/24-27/02/24	Harborough Local Plan Regulation 18 consultation.	Understanding of emerging Local Plan issues and options.
30/04/24	Online DtC workshop with all prescribed DtC bodies.	<p>All attendees were provided with updates on:</p> <ul style="list-style-type: none"> The Regulation 18 Issues and Options Consultation responses

Harborough Duty to Cooperate Statement of Compliance

Date	Brief Description of the activity	Key outputs
	<ul style="list-style-type: none"> All workshop materials were sent to the ORR for review and comments. 	<ul style="list-style-type: none"> The emerging Local Plan and spatial strategy Proposed DtC engagement activities Approach to the production of a DtC SoCG Identified potential strategic cross-boundary matters Emerging evidence base studies
10/10/24	<p>Online DtC Workshop with all prescribed DtC bodies.</p> <ul style="list-style-type: none"> All workshop materials were sent to the ORR for review and comments. 	<p>All attendees were provided with updates on:</p> <ul style="list-style-type: none"> The emerging Local Plan and spatial strategy DtC engagement activities undertaken to date Identified strategic cross-boundary matters, and how they are being addressed through the production of the Local Plan. Approach to the production of DtC SoCG
11/10/24	<p>Liaised informally to invite comments on emerging draft Regulation 19 Local Plan sections and policies.</p>	<p>Understanding of emerging proposals</p>
10/03/25 - 06/05/25	Harborough Local Plan Reg 19 consultation	No response received. (see Section 6.0 for post-consultation engagement)
12/03/25	HDC sent Draft DtC SoCG	For review/agreement/signing: No response to emails.

National Highways

Date	Brief Description of the activity	Key outputs
Regular	<p>Highways and transport modelling meetings with Leicestershire County Council Highway Authority, Leicester City Highway Authority, National Highways, and all Leicester and Leicestershire authorities.</p>	<p>Discussions on transport modelling of growth options being considered in the Local Plan.</p>
Various	<p>Workshops held as part of the Joint Transport Evidence</p>	<p>Awareness of potential options for distributing growth and potential sites that informed this work.</p>
16/01/24-27/02/24	<p>Harborough Local Plan Regulation 18 consultation</p>	<ul style="list-style-type: none"> Response to the consultation relating to the proposed options and related issues
30/04/24	<p>Online DtC workshop with all prescribed DtC bodies.</p> <ul style="list-style-type: none"> All workshop materials were sent to national highways for review and comment. 	<p>All attendees were provided with updates on:</p> <ul style="list-style-type: none"> The Regulation 18 Issues and Options Consultation responses The emerging Local Plan and spatial strategy Proposed DtC engagement activities

Date	Brief Description of the activity	Key outputs
		<ul style="list-style-type: none"> • Approach to the production of a DtC SoCG • Identified potential strategic cross-boundary matters • Emerging evidence base studies
10/10/24	<p>Online DtC Workshop with all prescribed DtC bodies.</p> <ul style="list-style-type: none"> • All workshop materials were sent to National Highways for review and comment. 	<p>All attendees were provided with updates on:</p> <ul style="list-style-type: none"> • The emerging Local Plan and spatial strategy • DtC engagement activities undertaken to date • Identified strategic cross-boundary matters, and how they are being addressed through the production of the Local Plan. • Approach to the production of DtC SoCG
11/10/24	<p>Liased informally to invite comments on emerging draft Regulation 19 Local Plan sections and policies.</p>	<p>Comments provided on the draft Local Plan. No new strategic cross boundary matters or concerns raised which need to be addressed through additional Duty to Cooperate related activities.</p>
January 2025	<p>Meeting held with National Highways to outline the potential sites in proximity to the SRN, including at Magna Park</p>	<p>Agreed that a SoCG would be produced.</p>
10/03/25 - 06/05/25	Harborough Local Plan Reg 19 consultation	Representations received (see Section 6.0 for summary of representations and any post-consultation engagement).
12/03/25	HDC sent Draft DtC SoCG	For review/agreement/signing
28/03/25	HDC DtC SoCG with National Highways (March 2025)	DtC SoCG signed by National Highways.

4.0 Strategic and cross-boundary matters

4.1 Identification of strategic and cross boundary matters

4.1.1 Through the engagement activities listed within section 3 above, strategic cross boundary matters relevant to the production of the Harborough Local Plan have been identified with prescribed Duty to Cooperate bodies.

The following table summarises the key strategic cross boundary matters identified with relevant authorities and organisations in the run-up to the Regulation 19

Harborough Duty to Cooperate Statement of Compliance

consultation, and the activities undertaken to ensure that appropriate cooperation has taken place to support the production of the Local Plan.

Harborough Duty to Cooperate Statement of Compliance

Strategic cross boundary matters considered with prescribed Duty to Cooperate bodies up to Regulation 19 consultation (see section 6.0 for post-regulation 19 cooperation)

Strategic cross boundary matter	Relevant DtC and other bodies	DtC activities undertaken where the matter was considered	Summary of the cooperation outcomes up to Reg 19 consultation	Conclusions to date and next steps
<p><u>Unmet housing needs</u></p> <ul style="list-style-type: none"> • Providing a growth strategy which appropriately provides for Harborough’s contribution to meeting Leicester’s unmet housing needs (123 dpa of the total 18,700 homes up to 2036), in accordance with the Housing and Economic Needs Assessment and the June 2022 Leicester and Leicestershire Authorities’ Statement of Common Ground relating to Housing and Employment Land Needs. • Consideration of a post-2036 position across the Housing Market Area in relation to Leicester’s unmet needs. Without confirmation of the quantum and appropriate strategic distribution of Leicester City’s unmet needs post-2036, between 2036-2041 the HDC draft Local Plan will allocate growth only to meet the identified needs of Harborough District. 	<ul style="list-style-type: none"> • Leicestershire County Council • Blaby District Council • Charnwood Borough Council • Harborough District Council • Hinckley & Bosworth Borough Council • Leicester City Council • Melton Borough Council • North West Leicestershire District Council • Oadby & Wigston Borough Council • NHS 	<ul style="list-style-type: none"> • Participation in regular Members Advisory Group, Strategic Planning Group, Planning Officers’ Forum, and highways and transport modelling meetings. • Attendance at Leicester and Leicestershire Partnership meetings. • Production of joint evidence base documents relating to housing needs, including the Joint Position Statement on Housing and Employment Land Supply 2011 to 2031 (March 2018 and September 2020). • Agreement of a strategic SoCG with Leicester and Leicester authorities regarding unmet housing needs (June 2022). • Regulation 18 consultation. • Two DtC workshops. • DtC meetings. • Informally sharing the draft Regulation 19 Local Plan for review and comment. 	<ul style="list-style-type: none"> • The Leicester and Leicestershire Statement of Common Ground relating to Housing and Employment Land Needs (June 2022). • Agreement for HDC to test an increase to the Local Plan housing requirement figure by 123 dpa between 2020 and 2036 to accommodate part of Leicester City’s unmet housing need. • Notes of DtC workshops and meetings. • Agreement to share the emerging draft Local Plan policies for informal review and comment prior to Regulation 19 publication. 	<p>The draft HDC Local Plan will confirm the Council’s commitment to continue to work with authorities within the housing market area in order to address any future identified unmet housing needs from Leicester City.</p> <p>The Plan will include monitoring indicators to determine the need to review the Plan where identified post 2036 unmet housing needs may need to be addressed through the Harborough District Local Plan.</p> <p>Next steps:</p> <ul style="list-style-type: none"> • Continued engagement as required on the emerging HDC Local Plan policies. • Regulation 19 publication.

Harborough Duty to Cooperate Statement of Compliance

Strategic cross boundary matter	Relevant DtC and other bodies	DtC activities undertaken where the matter was considered	Summary of the cooperation outcomes up to Reg 19 consultation	Conclusions to date and next steps
<p><u>Planning for growth in the logistics sector (strategic B8 storage)</u></p> <ul style="list-style-type: none"> Particularly within the 'golden triangle' and 'Area of Opportunity 6 (M1 corridor) identified within the Warehousing and Logistics in Leicester and Leicestershire: Managing Growth and Change (April 2021) report. Identified need within Leicestershire for 718,875sqm of rail served and 301,293sqm of non-rail served logistics sites up to 2041. This is to be apportioned across the Leicestershire authorities. 	<ul style="list-style-type: none"> Leicestershire County Council Blaby District Council Charnwood Borough Council Harborough District Council Hinckley & Bosworth Borough Council Leicester City Council (Unitary) Melton Borough Council North West Leicestershire District Council Oadby & Wigston Borough Council Rugby Borough Council North Northants Council West Northants Council 	<ul style="list-style-type: none"> Participation in a Leicester and Leicestershire wide strategic B8 study to investigate needs across the wider area. Regulation 18 consultation. Two DtC workshops. Invited to a DtC officer level meeting specifically to discuss strategic B8 needs. Informally sharing the draft Regulation 19 Local Plan for review and comment. Informally sharing the draft strategic B8 Iceni study commissioned by HDC for review and comment. 	<ul style="list-style-type: none"> Outputs from the Leicester and Leicestershire wide strategic B8 study are expected later in 2025. Reg 18 Local Plan consultation representations raised concerns about an underestimation of strategic B8 needs. HDC therefore commissioned Iceni to investigate this further through the production of additional evidence on strategic B8 needs for the District. Notes of DtC workshops and meetings. Agreement to share emerging draft evidence and Local Plan policies for informal review and comment prior to Regulation 19 publication. 	<p>A HDC Strategic B8 Study produced by Iceni has identified an appropriate amount of strategic B8 use which should be allocated within Harborough District.</p> <p>The draft HDC Local Plan will allocate an amount of land for B8 uses sufficient to accommodate the District-wide needs identified within the Iceni Study and include monitoring indicators to determine the need to review the Plan when further evidence of need is available.</p> <p>Next steps:</p> <ul style="list-style-type: none"> Continued engagement as required on the emerging HDC Local Plan policies and evidence base. Regulation 19 publication. Finalisation of the Leicester and Leicestershire wide strategic B8 study, and engagement on how the conclusions of this

Harborough Duty to Cooperate Statement of Compliance

Strategic cross boundary matter	Relevant DtC and other bodies	DtC activities undertaken where the matter was considered	Summary of the cooperation outcomes up to Reg 19 consultation	Conclusions to date and next steps
				research may impact upon the approach taken within the draft HDC Local Plan.
<p><u>Expansion of Magna Park</u></p> <ul style="list-style-type: none"> Consideration of potential impacts on the strategic road network 	<ul style="list-style-type: none"> Rugby Borough Council West Northants Council Warwickshire County Council Leicestershire County Council National Highways 	<ul style="list-style-type: none"> Regulation 18 consultation. Two DtC workshops. DtC officer level meeting specifically to discuss strategic B8 needs and the expansion of Magna Park as a potential growth option. Informally sharing the draft Regulation 19 Local Plan for review and comment. Informally sharing the draft strategic B8 Icen study commissioned by HDC for review and comment. 	<ul style="list-style-type: none"> Notes of DtC workshops and meetings. HDC transport evidence has been assessing impacts of growth at Magna Park, and is considering the impacts on the A5, and Dodwells to the Long Shoot area, and Cross in Hand roundabout with input from the relevant transport bodies, including Warwickshire, Leicestershire, and National Highways. Agreement to share emerging draft evidence and Local Plan policies for informal review and comment prior to Regulation 19 publication. 	<p>The HDC Local Plan growth strategy identifies Magna Park as the most appropriate location for strategic B8 growth.</p> <p>Next steps:</p> <ul style="list-style-type: none"> Continued engagement as required on the emerging HDC Local Plan policies and evidence base. Regulation 19 publication. Finalisation of HDC transport evidence early in 2025, and engagement regarding the outputs of this evidence and the impacts upon the approach taken within the draft HDC Local Plan.
<p><u>Green wedges</u></p> <ul style="list-style-type: none"> Leicester/Thurnby/Stoughton/Oadby Green Wedge (GW2) adjoins similar designations in Leicester 	<ul style="list-style-type: none"> Leicester City Council Oadby & Wigston Borough Council 	<ul style="list-style-type: none"> Regulation 18 consultation. Two DtC workshops. Regular meetings with the relevant authorities. 	<ul style="list-style-type: none"> Regulation 18 comments recorded and used to inform the production of the draft Local Plan. 	<p>A HDC Green Wedge Assessment has been undertaken which will form part of the Local Plan evidence base. The</p>

Harborough Duty to Cooperate Statement of Compliance

Strategic cross boundary matter	Relevant DtC and other bodies	DtC activities undertaken where the matter was considered	Summary of the cooperation outcomes up to Reg 19 consultation	Conclusions to date and next steps
<p>City and Oadby and Wigston Borough.</p>		<ul style="list-style-type: none"> • Informally sharing the draft Regulation 19 Local Plan for review and comment. • Sharing the draft Green Wedges Assessment Review with LCC and Oadby and Wigston Borough Council. 	<ul style="list-style-type: none"> • Notes of DtC workshops and meetings. • Production of the Green Wedges Assessment as part of the Local Plan evidence base. All relevant authorities are aware of the evidence base work being undertaken to support the production of the Local Plan. • Agreement to share emerging draft evidence and Local Plan policies for informal review and comment prior to Regulation 19 publication. 	<p>Assessment does not recommend any amendments to the Green Wedges.</p> <p>Next steps:</p> <ul style="list-style-type: none"> • Continued engagement as required on the emerging HDC Local Plan policies and evidence base. • Regulation 19 publication. • Finalisation of relevant Local Plan evidence base work, and engagement regarding the outputs of this evidence and the impacts upon the approach taken within the draft HDC Local Plan.
<p><u>Impacts of site allocations within the emerging Local Plan</u></p> <ul style="list-style-type: none"> • Strategic site allocations are being considered on or close to authority boundaries with Leicester City and Oadby and Wigston Borough, including. <ul style="list-style-type: none"> ○ Land south of Gartree Road, Oadby (residential and employment allocation) 	<ul style="list-style-type: none"> • Leicester City Council • Oadby & Wigston Borough Council • Leicestershire County Council • Historic England • Environment Agency 	<ul style="list-style-type: none"> • Regulation 18 consultation. • Two DtC workshops. • Regular meetings with the relevant authorities. • Informally sharing the draft Regulation 19 Local Plan for review and comment. 	<ul style="list-style-type: none"> • Regulation 18 comments recorded and used to inform the production of the draft Local Plan. • Notes of DtC workshops and meetings. • HDC draft Local Plan transport and infrastructure related evidence is assessing potential impacts of proposed site allocations, 	<p>The draft HDC Local Plan growth strategy includes strategic site allocations on or close to authority boundaries with Leicester City and Oadby and Wigston Borough, including.</p> <ul style="list-style-type: none"> • Land south of Gartree Road, Oadby (residential and employment allocation)

Harborough Duty to Cooperate Statement of Compliance

Strategic cross boundary matter	Relevant DtC and other bodies	DtC activities undertaken where the matter was considered	Summary of the cooperation outcomes up to Reg 19 consultation	Conclusions to date and next steps
<ul style="list-style-type: none"> ○ Land between Scraftoft and Bushby, Scraftoft ○ Land east of Beeby Road, Scraftoft 			<p>including sites with potential strategic and cross boundary impacts. All relevant authorities are aware of the evidence base work being undertaken to support the production of the Local Plan.</p> <ul style="list-style-type: none"> ● Agreement to share emerging draft evidence and Local Plan policies for informal review and comment prior to Regulation 19 publication. 	<ul style="list-style-type: none"> ● Land between Scraftoft and Bushby, Scraftoft ● Land east of Beeby Road, Scraftoft <p>Next steps:</p> <ul style="list-style-type: none"> ● Continued engagement as required on the emerging HDC Local Plan policies and evidence base. ● Regulation 19 publication. ● Finalisation of relevant Local Plan evidence base work, and engagement regarding the outputs of this evidence and the impacts upon the approach taken within the draft HDC Local Plan.

5.0 Duty to Cooperate Statements of Common Ground

- 5.1.1 The Planning Practice Guidance⁶ (PPG) recommends that authorities should make 'SoCG available on their website by the time they publish their draft plan, in order to provide communities and other stakeholders with a transparent picture of how they have collaborated'. The Council therefore drafted Duty to Cooperate SoCG with the prescribed Duty to Cooperate bodies. These were shared for agreement and signing with the bodies in March 2025.
- 5.1.2 The table below outlines the identified strategic cross boundary matters which relate to each body, and whether the Duty to Cooperate SoCG has been signed. Links to the signed Duty to Cooperate SoCGs are available in Appendix 2.
- 5.1.3 In addition to the DtC SoCG, where considered appropriate in light of Regulation 19 representations, cross-boundary matters and to support the examination of the Local Plan, the Council has also held discussions with relevant bodies/stakeholders to ensure that any issues raised are addressed appropriately, reflecting recent and ongoing cooperation and engagement with relevant organisations. These discussions have focussed on cross-boundary matters and issues raised through the Regulation 19 consultation (see Section 6.3 for summary).
- 5.1.4 Section 6.0 of this statement addresses representations raised thorough Regulation 19 consultation by bodies on Duty to Cooperate matters and details further where further discussion has been undertaken and is continuing to support the examination of the Local Plan.

⁶ PPG, Plan Making, Paragraph: 020 Reference ID: 61-020-20190315

Harborough Duty to Cooperate Statement of Compliance

Signed Duty to Cooperate Statements of Common Ground

Duty to Cooperate body	Strategic cross boundary matters identified in DtC SoCG					Status of DtC SoCG (links at Appendix 2)
	Unmet housing needs including addressing Leicester's unmet needs beyond 2036.	Planning for growth in the logistics sector (strategic B8 storage)	Expansion of Magna Park – concerns raised regarding potential impacts (including on SRN)	Green wedges	Impacts of site allocations within the emerging Local Plan (i.e. strategic and/or cross boundary sites)	
Leicestershire County Council	✓	✓	✓		✓	Signed
Leicester City Council	✓	✓		✓	✓	Post-Regulation 19 SoCG signed
Blaby District Council	✓	✓				Signed
Charnwood Borough Council	✓	✓				Signed
Hinckley & Bosworth Borough Council	✓	✓				Signed
Melton Borough Council	✓	✓				Signed
North West Leicestershire District Council	✓	✓				Signed
Oadby & Wigston Borough Council	✓	✓		✓	✓	Signed
Warwickshire County Council			✓			Shared. Discussions ongoing.
Rugby Borough Council		✓	✓			Signed
Rutland County Council						Not signed but Reg 19 representation confirmed that HDC has met DtC.

Harborough Duty to Cooperate Statement of Compliance

Duty to Cooperate body	Strategic cross boundary matters identified in DtC SoCG					Status of DtC SoCG (links at Appendix 2)
	Unmet housing needs including addressing Leicester's unmet needs beyond 2036.	Planning for growth in the logistics sector (strategic B8 storage)	Expansion of Magna Park – concerns raised regarding potential impacts (including on SRN)	Green wedges	Impacts of site allocations within the emerging Local Plan (i.e. strategic and/or cross boundary sites)	
North Northants Council		✓				Signed
West Northants Council		✓	✓			Signed
Environment Agency					✓	Signed
Historic England					✓	Signed
Natural England						Signed
Homes England						Signed
National Highways			✓			Signed
NHS Leicester, Leicestershire, and Rutland Integrated Care Board						Signed
Civil Aviation Authority						Shared - confirmed no involvement necessary
Office of Rail and Road						Shared - no engagement despite repeated approaches.

6.0 Post Regulation 19 Duty to Cooperate Activity

6.1 Summary of Local Authority and Prescribed Body Responses to the Proposed Submission Local Plan Consultation (Regulation 19)

6.1.1 Harborough District Council published the Proposed Submission Draft Harborough Local Plan for public consultation in March 2025. The consultation ran for 8 weeks from 10 March to 6 May 2025. As part of this consultation, responses were received from several Duty to Cooperate bodies. The table below contains the Duty to Cooperate bodies, a summary of the main strategic matters raised, and post Regulation 19 consultation engagement. The Council has worked with bodies on addressing the matters raised and, where necessary, discussions will continue through to the Examination.

Leicester and Leicestershire authorities

Duty to Cooperate Body	Summary of the main strategic issues received through the formal consultation on the Proposed Submission Local Plan	Further engagement post consultation
Blaby District Council Respondent ID: 8368	Acknowledges the DtC Statement of Compliance on the cross boundary strategic matters between HDC and BDC and welcomes the opportunity to continue discussions on such matters.	Ongoing as appropriate as part of joint working across L&L, including: <ul style="list-style-type: none"> • Joint evidence (HENA, Strategic Warehousing Study, Updated Housing Distribution Paper) • Emerging L&L Strategic Warehousing Needs and Apportionment SoCG (agreed and awaiting signing by the authorities) • Emerging L&L Housing Distribution SoCG (supporting local plans that reached Reg 19 after 12/3/25 but before 31/12/26) South Leicestershire Joint Transport Evidence: Stage 2 for South Leicestershire authorities (Blaby, Harborough, Hinckley &

Harborough Duty to Cooperate Statement of Compliance

Duty to Cooperate Body	Summary of the main strategic issues received through the formal consultation on the Proposed Submission Local Plan	Further engagement post consultation
		Bosworth, Oadby & Wigston). Due 31 March 2026.
<p>Charnwood Borough Council</p> <p>Respondent ID: 8278</p>	<p>The DtC Statement of Compliance demonstrates how HDC have met their responsibilities under the DtC. Welcomes reference to Strategic Growth Plan. Supports expansion of Magna Park. Minor points relating to providing clarity in respect of unmet need 36-41 and cumulative transport impacts re: Scraftoft East.</p>	<p>Ongoing as appropriate as part of joint working across L&L, including:</p> <ul style="list-style-type: none"> • Joint evidence (HENA, Strategic Warehousing Study, Updated Housing Distribution Paper) • Emerging Strategic Warehousing Needs and Apportionment SoCG (agreed and awaiting signing by the authorities) • Emerging L&L Housing Distribution SoCG (supporting local plans that reached Reg 19 after 12/3/25 but before 31/12/26)
<p>Hinckley and Bosworth Borough Council</p> <p>Respondent ID: 8254</p>	<p>Does not anticipate any issues with soundness or legal compliance at this stage. In addition, HBBC consider that Harborough District Council have engaged constructively, actively, and on an ongoing basis with bodies including neighbouring authorities, the County Council and other relevant bodies. Suggests providing fuller explanation re: buffer and unmet need 36-41.</p>	<p>Ongoing as appropriate as part of joint working across L&L, including:</p> <ul style="list-style-type: none"> • Joint evidence (HENA, Strategic Warehousing Study, Updated Housing Distribution Paper) • Emerging Strategic Warehousing Needs and Apportionment SoCG (agreed and awaiting signing by the authorities) • Emerging L&L Housing Distribution SoCG (supporting local plans that reached Reg 19 after 12/3/25 but before 31/12/26) <p>South Leicestershire Joint Transport Evidence: Stage 2 for South Leicestershire authorities (Blaby, Harborough, Hinckley &</p>

Harborough Duty to Cooperate Statement of Compliance

Duty to Cooperate Body	Summary of the main strategic issues received through the formal consultation on the Proposed Submission Local Plan	Further engagement post consultation
		Bosworth, Oadby & Wigston). Due 31 March 2026)
<p>Leicester City Council</p> <p>Respondent ID: 5788 ID: 8062</p>	<p>Raises concerns over several cross-boundary issues:</p> <ul style="list-style-type: none"> • Housing requirement post 2035 does not address any unmet need and is unsound • The planned growth has cumulative and cross boundary impacts on Leicester and needs to have a strong sustainable transport approach • Land South of Gartree Road SDA impacts on City are not clear, particularly re: the highway and transport network • Scraftoft East’s impact on Green Wedge threatens its ability to function as a GW and the need to be involved re: transport issues. • Land at Beeby Road is not well related to Scraftoft or Leicester, exacerbated by deallocation of Scraftoft North which should be retained • Plan is silent on accommodation needs of Gypsy and Travellers and Travelling Showpeople who do not meet the 2023 planning definition • Office provision within the district, particularly where sites are located close to Leicester (i.e. LSGR SDA), could impact on new office development in the city centre 	<p>Ongoing as appropriate as part of joint working across L&L.</p> <p>Joint evidence (HENA, Strategic Warehousing Study, Updated Housing Distribution Paper).</p> <p>Emerging Strategic Warehousing Needs and Apportionment SoCG (agreed and awaiting signing by the authorities).</p> <p>Emerging L&L Housing Distribution SoCG (supporting local plans that reached Reg 19 after 12/3/25 but before 31/12/26).</p> <p>Series of meetings held from June 25 onwards to discuss outstanding issues raised at Reg 19. Main issue is in relation to unmet housing need post 2036 and trigger policy.</p> <p>Post Reg 19 SoCG signed by LCC and HDC relating to areas of agreement and disagreement agreed in March 2026 (see Section 6.5).</p>
<p>Leicestershire County Council/ Leicestershire Transport Authority</p> <p>Respondent ID: 7111</p>	<p>Raises concerns relating to:</p> <ul style="list-style-type: none"> • Substantive issues associated with the Plan’s evidence base (no separate testing of the proposed spatial strategy undertaken/evidence base not sufficiently mature/concern over the Harborough Strategic Transport Assessment) • As the Local Transport Authority, the Plan in its current form fails to meet the 	<p>Joint evidence (HENA, Strategic Warehousing Study, Updated Housing Distribution Paper).</p> <p>Emerging Strategic Warehousing Needs and Apportionment SoCG.</p>

Duty to Cooperate Body	Summary of the main strategic issues received through the formal consultation on the Proposed Submission Local Plan	Further engagement post consultation
	<p>NPPF tests of soundness insofar both its Effectiveness and Consistency with national policy</p> <ul style="list-style-type: none"> • A number of policies require updating to reflect required land and monetary contributions to deliver necessary education provision • Clearer definitions around health and health inequality to set the tone for the health content of the Plan. <p>LTA concerns regarding soundness regarding:</p> <ul style="list-style-type: none"> • Transport evidence: The transport evidence supporting the plan is not sufficiently mature and the impacts of growth on the A6 corridor appear to have been presented without full analysis and proper context giving a misleading impression that the impacts will not be material. • Policy approach: The Plan as a whole lacks any coherent approach to seeking to address its transport impacts overall. • Funding Mechanism: The Plan lacks any coherent, lawful policy approach to seeking to secure developer contributions towards transport measures required to address cumulative and/or cross-boundary transport impacts. • Strategic Warehousing and the SRN: A strategic scale improvement is required at least at the Gibbet Hill junction on the A5 to support new Strategic Warehousing allocations at Magna Park. The LTA has no confidence that National Highways will be able to bring forward a strategic scale improvement within the Plan's lifetime. • Strategic Growth Plan: Evidence highlights the lack of suitable orbital transport connectivity links around the east and south of Leicester. This is beyond what the Plan can reasonably be expected to address alone, but the Plan must not fetter or frustrate the delivery of future strategic transport measures required to address this issue. 	<p>Emerging L&L Housing Distribution SoCG (supporting local plans that reached Reg 19 after 12/3/25 but before 31/12/26)</p> <p>AECOM for Leicestershire County Council: South Leicestershire Joint Transport Evidence: Stage 2 for South Leicestershire authorities (Blaby, Harborough, Hinckley & Bosworth, Oadby & Wigston). Due 31 March 2026)</p> <p>Series of meetings held from June 2025 onwards to discuss:</p> <ul style="list-style-type: none"> • LCC - HDC DtC SoCG. Signed by both authorities; • Transport evidence/concerns; and • Education re: delivery strategy <p>Letter from County Council (Harborough Local Plan (2020-2041): Moving forward to resolve outstanding transport and education matters) dated 12 February 2026 (see Appendix 4 below) confirming the agreed joint way forward to resolving outstanding transport and education matters in respect of the Harborough Local Plan. Also agreed to Proposed Modifications in respect of:</p> <ul style="list-style-type: none"> • Transport evidence • Policy approach • Funding mechanism (for at least transport infrastructure)

Harborough Duty to Cooperate Statement of Compliance

Duty to Cooperate Body	Summary of the main strategic issues received through the formal consultation on the Proposed Submission Local Plan	Further engagement post consultation
		<ul style="list-style-type: none"> Strategic Growth Plan <p><u>Update Report (with letter as Appendix A) went to Cabinet on 2 March 2026: Item 6 - Ongoing Collaboration between Harborough District Council and Leicestershire County Council – Proposed Submission Local Plan.</u></p> <p>Emerging SoCGs on Transport (see Section 6.5).</p>
<p>Melton Borough Council</p> <p>Respondent ID: 3946</p>	<p>Satisfied that DtC requirements have been fulfilled at this stage. No potential cross-boundary issues anticipated.</p>	<p>Ongoing as appropriate as part of joint working across L&L, including:</p> <ul style="list-style-type: none"> Joint evidence (HENA, Strategic Warehousing Study, Updated Housing Distribution Paper) Emerging Strategic Warehousing Needs and Apportionment SoCG (agreed and awaiting signing by the authorities) Emerging L&L Housing Distribution SoCG (supporting local plans that reached Reg 19 after 12/3/25 but before 31/12/26)
<p>North West Leicestershire District Council</p> <p>Respondent ID: 3948</p>	<p>Raises issues regarding:</p> <ul style="list-style-type: none"> 2036-41 housing requirement figure, suggesting that it should reflect the revised housing requirement in the current standard method Emerging evidence in relation to Strategic Warehousing may recommend higher apportionment than the Plan provides for. Should anticipate this and make provision. IM01 c) not sufficiently robust 	<p>Ongoing as appropriate as part of joint working across L&L, including:</p> <ul style="list-style-type: none"> Joint evidence (HENA, Strategic Warehousing Study, Updated Housing Distribution Paper) Emerging Potential Strategic Warehousing Needs and Apportionment SoCG (agreed and awaiting signing by the authorities)

Duty to Cooperate Body	Summary of the main strategic issues received through the formal consultation on the Proposed Submission Local Plan	Further engagement post consultation
		<ul style="list-style-type: none"> Emerging L&L Housing Distribution SoCG (supporting local plans that reached Reg 19 after 12/3/25 but before 31/12/26)
<p>Oadby and Wigston Borough Council</p> <p>Respondent ID: 3866</p>	<p>Welcomes the collaborative working and looks forward to continuing to work closely, especially re: cross-boundary infrastructure delivery considerations to mitigate the impacts of potential new growth in our Authority areas. Points raised in relation to:</p> <ul style="list-style-type: none"> O&W likely unmet need going forward (welcome IM01) Education provision on the cross-boundary site and need to bring the site forward in a sustainable/joined-up manner; Leicester City's unmet need is not rolled forward from 2036-41; Implications of O&W's new Transport Study. 	<p>Joint evidence (HENA, Strategic Warehousing Study, Updated Housing Distribution Paper).</p> <p>Emerging Strategic Warehousing Needs and Apportionment SoCG (agreed and awaiting signing by the authorities).</p> <p>Emerging L&L Housing Distribution SoCG (supporting local plans that reached Reg 19 after 12/3/25 but before 31/12/26).</p> <p>South Leicestershire Joint Transport Evidence: Stage 2 for South Leicestershire authorities (Blaby, Harborough, Hinckley & Bosworth, Oadby & Wigston). Due 31 March 2026)</p> <p>Regular meetings held regarding Land South of Gartree Road SDA cross-boundary site.</p>

Non-Leicester and Leicestershire authorities which adjoin Harborough District Council:

Duty to Cooperate Body	Summary of the main strategic issues received through the formal consultation on the Proposed Submission Local Plan	Further engagement post consultation
North Northamptonshire Council	No representations received.	Ongoing as appropriate but no concerns/issues re: strategic matters identified.
Rugby Borough Council	No representations received.	Ongoing as appropriate.

Harborough Duty to Cooperate Statement of Compliance

Duty to Cooperate Body	Summary of the main strategic issues received through the formal consultation on the Proposed Submission Local Plan	Further engagement post consultation
		DtC meeting (involving Warwickshire CC and Leicestershire CC) re: potential transport impacts of draft Rugby LP (Reg 19 consultation held in early 2026). Established that proposals in the draft Rugby LP will have 'de minimis' impact on A5/Gibbet Hill roundabout.
Rutland County Council Respondent ID: 3953	Confirms that there are no unresolved strategic cross-boundary planning issues with the Harborough Local Plan.	Ongoing as appropriate but no concerns/issues re: strategic matters identified.
Warwickshire County Council (Highways Authority) Respondent ID: 417	Expresses concern relating to policies, in particular allocations MP1 and MP2, which are likely to materially impact on the A5 corridor, the A426 and other local roads in Rugby Borough, Warwickshire, including the cumulative impact of development in the western part of District. Main concern is the impact on Gibbet Hill roundabout in the absence of an improvement scheme coming forward. For the above reasons WCC does not support proposed Strategic Warehousing allocations MP1 and MP2. If they go ahead want to be involved in pre-app discussions, any transport work as part of an application and may require use of HGV Route Management Strategies.	Series of meetings held from 16 October 25 to discuss Reg 19 representations and way forward. Leicestershire County Council involved in 2 meetings also. Rugby Borough Council involved in 1 of those meetings. Magna Park allocations and impact on A5/Gibbet Hill roundabout main issue, including cumulative impacts on highway network.
West Northamptonshire Council	No representations received.	Ongoing as appropriate but no concerns/issues re: strategic matters identified.

Other Prescribed Bodies:

Duty to Cooperate Body	Summary of the main strategic issues received through the formal consultation on the Proposed Submission Local Plan	Further engagement post consultation
Environment Agency	Comments largely supportive with some detailed site-specific comments on selected sites, including OA1 (cross-boundary site). No new strategic matters identified.	Ongoing as appropriate. Proposed modifications address site-specific

Harborough Duty to Cooperate Statement of Compliance

Duty to Cooperate Body	Summary of the main strategic issues received through the formal consultation on the Proposed Submission Local Plan	Further engagement post consultation
Respondent ID: 5127		concerns raised in representation.
Historic England Respondent ID: 4627	Comments on site allocation OA1 (LSGR cross-boundary site), objecting to Stretton Magna SM being within site boundary and the need for a buffer to be considered in respect of the significance of the SM. Detailed feedback on DM03 (Heritage Asset Conservation and Design Standards).	Meetings/correspondence with HE held from June 2025 onwards aimed at agreeing a way forward following Regulation 19 representations. Proposed modifications address many of concerns/issues raised in representation. Collaboration is continuing and emerging SoCG well-advanced (see Section 6.5). Discussions on-going.
Natural England Respondent ID: 6655	Suggests wording changes/additions to policies for accuracy and consistency.	Ongoing as appropriate. Proposed modifications address issues raised.
Civil Aviation Authority	No response received.	Contacted post Regulation 19 consultation in respect of DtC SoCG. Confirmed no response to be given.
Homes England Respondent ID: 8097	(Commented as joint landowners with Urban and Civic re: the allocation of Land South of Gartree Road SDA)	Ongoing as appropriate. As joint landowner represented at meetings regarding delivery of Land South of Gartree Road SDA.
Leicestershire County Council Highway Authority (see Leicestershire County Council)	(See Leicestershire County Council above)	(See Leicestershire County Council above)
NHS Leicester, Leicestershire, and Rutland	Acknowledges working closely with HDC on the Plan and IDP and are pleased to see their comments included.	Ongoing as appropriate but no concerns raised in representation.

Duty to Cooperate Body	Summary of the main strategic issues received through the formal consultation on the Proposed Submission Local Plan	Further engagement post consultation
Integrated Care Board Respondent ID: 7171		
National Highways Respondent ID: 8370	Comments on impacts on the SRN (A5) and clarification in relation to evidence. No new strategic cross-boundary matters identified.	Series of meetings held from July 2025 onwards to discuss and clarify reg 19 comments. SoCG signed in April 26 (see Section 6.4).
Office of Rail and Road	No representations received.	Several attempts to engage but no response forthcoming. Last contacted 23/02/26. No response received.

6.2 Post Regulation 19 Consultation Discussions/Activity

- 6.2.1 Taking into account the tables above, none of the bodies have stated that the Council has failed the Duty to Cooperate. The Duty to Cooperate is not a Duty to agree and it is considered that any outstanding matters, whether highlighted in signed Statements of Common Ground or not, are not the result of lack of constructive, active and ongoing engagement. This section outlines the main areas of post-Regulation 19 DtC activity addressing strategic matters. The Council will continue to positively work with its Duty to Cooperate partners/organisations to address any issues arising following submission of the draft Local Plan and throughout the Examination process.
- 6.2.2 There has been extensive engagement with relevant DtC partners regarding addressing issues arising from Regulation 19 representations. Where appropriate, discussions and meetings have taken place to clarify any issues raised through the Regulation 19 consultation. These discussions have resulted in actions such as preparing further evidence, involving partners in detailed discussion regarding the delivery of strategic sites and, in some cases, the identification of proposed modifications to the draft Local Plan. More specifically, further work and discussions with the following partners have taken place, with main issue shown in brackets:

Harborough Duty to Cooperate Statement of Compliance

- Leicestershire County Council (Transport)
- Leicestershire County Council/Oadby & Wigston Borough Council (Education: Delivery Strategy)
- Leicester City Council (Unmet need post 2036/Trigger policy)
- National Highways (Strategic Road Network (SRN))
- Warwickshire County Council/Leicestershire County Council (Strategic Warehousing and the SRN)
- Historic England (Heritage/Land South of Gartree Road Strategic Development Area)
- Leicester and Leicestershire Authorities (Strategic B8 need apportionment)

6.2.3 Work has progressed with the promoters of the main strategic sites to ensure that they are deliverable and that strategic cross-boundary implications are considered. These discussions have focussed on the following sites (main partners involved specified along with main issue):

- Land South of Gartree Road SDA (Policy SA02): Urban & Civic, Homes England, Leicestershire County Council, Oadby & Wigston Borough Council: Deliverability
- North of Market Harborough SDA (Policy SA03): Hallam Land Management, William Davis Homes, Jelson Homes: Deliverability
- Lutterworth East SDA (Committed site from the adopted Local Plan 2011-2031): Leicestershire County Council (Strategic Property Services): Deliverability/trajectory.

6.2.4 In addition, the Statement of Common Ground relating to Housing Distribution following NPPF and new Standard Method published December 2024 (December 2025) is in the process of being adopted by the Leicester and Leicestershire authorities. The purpose of this SoCG is to support the submission of four local plans in Leicestershire that reached Reg 19 after 12/3/25 but before 31/12/26. The local authorities affected are Blaby District Council, Hinckley & Bosworth Borough Council, North West Leicestershire District Council and Oadby & Wigston Borough Council. While it does not impact on Harborough's draft Local Plan, it demonstrates

effective cooperation between the HMA authorities in support of plan making and will inform any review of the Local Plan.

6.3 Strategic Matters: Summary of areas of agreement and remaining areas of significant disagreement

6.3.1 Discussions with DtC partners and site promoters have been ongoing since the Regulation 19 consultation to clarify any concerns raised. While many issues have been addressed, there are remaining areas of disagreement in relation to the key strategic matters.

6.3.2 The following paragraphs summarise progress on strategic matters through on-going discussion. Any SoCGs that have been agreed to address issues raised are summarised in section 6.4.

Strategic Matter: Unmet housing needs (including addressing Leicester's unmet housing need beyond 2036)

6.3.3 Leicester City Council remains concerned that the housing requirement does not address any unmet need in the 2036-41 period. To help rectify this, the City Council would like to see a commitment to an immediate review of the Local Plan upon adoption within Policy IM01. However, the Council remains of the view that Policy IM01 already provides appropriate mechanisms to trigger a review of the Local Plan, before the statutory five-year review period, should circumstances change and indicate this is necessary. In the meantime, Government reform of the planning system is underway, and further regulations will follow in 2026 which are likely to influence the timing of the review of the Local Plan. A SoCG has been signed (see section 6.4).

Strategic Matter: Planning for growth in the logistics (strategic B8) sector

6.3.4 Regular meetings with neighbouring local planning authorities have considered outputs from Leicester and Leicestershire Strategic Distribution Study. A Leicester and Leicestershire Statement of Common Ground on the apportionment of strategic warehousing floorspace need for each authority 2023-2046 has been agreed (see section 6.4 below) and is currently going through each authority's governance process for approval to sign.

Strategic Matter: Expansion of Magna Park – potential impacts (including on Strategic Road Network)

6.3.5 Further transport evidence has been commissioned, and meetings held with relevant transport bodies, including Leicestershire County Council, Warwickshire County Council and National Highways. The impact of the proposed Magna Park allocations on the A5, including Gibbet Hill roundabout, is the main concern of the Leicestershire and Warwickshire Local Transport Authorities and discussions are continuing.

Impacts of site allocations within the emerging Local Plan (i.e. strategic and/or cross boundary sites) including transport and education

6.3.6 *Education:* Following concerns raised at Regulation 19 regarding education provision, the Council, in collaboration with the Local Education Authority, Oadby and Wigston Borough Council and Homes England, has commissioned an Education Strategy and Delivery Plan to respond to the representations and support growth identified in the Local Plan.

6.3.7 *Transport:* Several respondents, including Leicestershire County Council as the Local Transport Authority, raised substantive concerns relating to the transport evidence base and strategy for addressing cumulative and cross-boundary transport impacts, particularly on the A6 corridor. Leicester City Council, as a neighbouring Transport Authority, was also keen for a commitment to joint working to mitigate any cross-boundary impacts.

6.3.8 Following on from the Regulation 19 consultation, additional technical studies have been commissioned, and meetings held with relevant stakeholders, including neighbouring authorities and National Highways. Evidence papers are to be prepared in consultation with Leicestershire County Council. Furthermore, proposed modifications will reflect discussions with partners. Harborough District Council is actively considering the introduction of the Community Infrastructure Levy with the appointment of consultants to assess whether Community Infrastructure Levy charges are feasible.

6.3.9 More generally, discussions with site promoters of the main strategic sites have been on-going with a focus on ensuring deliverability and the approach to addressing any constraints.

Harborough Duty to Cooperate Statement of Compliance

- 6.3.10 In the case of Land South of Gartree Road SDA, Oadby & Wigston Borough Council has been a key partner in these discussions given the cross-boundary nature of the allocation. Leicester City Council is also involved in discussions with the site promoter and partners regarding potential cross-boundary and cumulative impacts, particularly in relation to transport. HDC has also had discussions with Historic England in respect of the SDA to ensure historic assets are considered appropriately in any future masterplanning.
- 6.3.11 The need to need to ensure the delivery of Lutterworth East SDA, allocated in the adopted Local Plan and now a commitment, has also been a focus of discussion given its role in the housing trajectory and a SoCG with the landowner has been signed (see section 6.4).

Green Wedges

- 6.3.12 Leicester City Council has raised concerns regarding the loss of some Green Wedge as part of the Scraftoft East (Policy SA04) allocation. The Council maintains that the Green Wedge will still be able to fulfil the functions of the designation and is currently in discussion with the City Council over the matter. It will also be addressed in one of the topic papers.

6.4 Signed/Agreed Post Regulation 19 Statements of Common Ground:

Leicester City Council – Harborough District Council Statement of Common Ground (April 2026)

- 6.4.1 A SoCG between Leicester City Council and Harborough District Council has been signed (see Appendix 2 for link) which clarifies the issues raised by the City Council's representation at Regulation 19. Many of the City Council's issues have been addressed through proposed modifications to the draft Local Plan including;
- The acknowledgement that employment land at Land South of Gartree Road Strategic Development Area (SDA) should be designed to preserve the vitality of the Leicester city centre prime office market;
 - The acknowledgement that Leicester City Council is a key stakeholder in the successful delivery nearby strategic allocations (i.e. Land South of Gartree Road and Scraftoft East), particularly in respect of highway and transport discussions; and

Harborough Duty to Cooperate Statement of Compliance

- The need for any cross-boundary and cumulative transport impacts to be considered and the delivery of an accessible transport supported with the involvement of adjoining Highway Authorities, including Leicester City Council.

6.4.2 However, there is outstanding disagreement on the following strategic matters:

- Unmet housing need in the 2036–41 period: The Councils disagree that an allowance of 560 dwellings (or 112 dpa from 2036–2041) for unmet need or a proportion of the housing headroom (contingency) should be identified or specified to meet Leicester City’s unmet housing needs for the period 2036–41 (based upon the November 2025 Housing Distribution Paper apportionment) as requested by the City Council.
- Review of the draft Harborough Local Plan: The Councils disagree that a proposed modification to Policy IM01 should be prepared which commits HDC to and immediate review of the Local Plan on adoption as requested by the City Council.
- Policy SA01: Site allocation S2 Land at Beeby Road and the de-allocation of Scraftoft North Strategic Development Area (SDA): The Councils disagree that Scraftoft North SDA should be retained as an allocation in the Local Plan and that the site is neither viable nor developable within the Plan period.

Leicester and Leicestershire Statement of Common Ground relating to Strategic Warehousing Need (January 2026)

6.4.3 A SoCG between the Leicester and Leicestershire authorities has been agreed and is currently going through each authority’s signing process (see Appendix 2 for link). Through the SoCG the authorities agree:

- That the *Leicester & Leicestershire: Strategic Distribution Floorspace Needs Update and Apportionment (Oct 2025)* is the most up-to-date cooperatively produced evidence on the needs of the strategic warehousing sector to inform planning across L&L;
- that the study gives strategic guidance on the distribution of future growth and provides a basis and methodology for the apportionment of need which is robust and effective;
- that the figures set out in the total column of Table 2 of the SoCG are the agreed apportionment of strategic warehousing floorspace need for each authority for the period 2023–2046;

Harborough Duty to Cooperate Statement of Compliance

- To test their respective apportionment figures (pro-rated) through their Local Plan preparation;
- To continue to jointly monitor progress in site allocation, consents and delivery at the L&L level, annually; and
- That they, or successor authorities, will review and update the L&L strategic warehousing wide need and apportionment evidence as appropriate.

6.4.4 The SoCG sets out specific agreement relating to:

- North West Leicestershire District Council's proposed approach (equating to a supply of 12 years);
- Any fresh Hinckley National Rail Freight Interchange Development Consent Order application needing to overcome technical challenges to be an appropriate approach in this location; and
- Leicestershire County Council's concerns around the ability of the county's road network, particularly the Strategic Road Network, to accommodate the quantum of need and the need for the figures to be tested through each local authority's plan making process.

No areas of disagreement are identified in the SoCG.

Leicestershire County Council (Strategic Property Services) and Harborough District Council Statement of Common Ground relating to Lutterworth East Strategic Development Area (February 2026)

6.4.5 Given its scale, the successful delivery of committed site Lutterworth East Strategic Development Area (Policy L1 in the adopted Local Plan) is important to the draft Local Plan's spatial strategy and associated housing trajectory. Leicestershire County Council (on behalf of Strategic Property Services as landowner) submitted a Regulation 19 representation requesting that, given its significance, adopted Policy L1 should be retained in the new Local Plan and shown on the Policies Map as a major committed site. Through the signed SoCG (see Appendix 2 for link), the parties agree that at least 1,500 new homes can be delivered on the site during the plan period to 2041 and that engagement in relation to plan making will continue up to and beyond submission as appropriate and necessary. While there is no current agreement on the treatment of adopted Policy L1, both parties agree that this does not affect the developability of the site.

National Highways; Harborough Local Plan Statement of Common Ground with National Highways (April 2026)

6.4.6 The signed SoCG with National Highways covers National Highway's position on the Local Plan Transport Evidence, including impacts and mitigation of the submission Local Plan on the Strategic Road Network. A summary of the areas of agreement is set out below:

- National Highways and HDC agreed that effective and ongoing duty to cooperate engagement has taken place between the parties throughout the preparation of the Local Plan and will continue during its implementation.
- National Highways has reviewed AECOM's PRTM-based modelling and agrees with HDC that it is considered appropriate for plan-making purposes, subject to the usual caveats around assumptions and forecast uncertainty.
- National Highways has agreed with HDC that the level of assessment undertaken to support the HDC Local Plan is considered proportionate for plan-making; noting that further detailed assessment will be required at the development management stage to confirm impacts and mitigation.
- National Highways agreed with HDC that no further evidence is needed to support the Local Plan (noting that assessments will be needed at the planning application stage, in line with DfT Circular 01/2022). National Highways, therefore, agrees that the transport evidence base which underpins the Local Plan is robust and proportionate to the plan-making stage.
- National Highways has agreed that there is no requirement for any SRN Local Plan mitigation within the Harborough District within the plan period up to 2041 (noting that through the planning application process there may be sites that will be required to deliver mitigation on the SRN during the Local Plan period, however, this will be identified and agreed with National Highways through the planning application process).
- National Highways and HDC agree that whilst the Council's highways modelling is proportionate to plan-making and robust, detailed Transport Assessments/ Transport Statements would be required in support of planning applications for developments to establish the potential impacts on the SRN and the need for SRN mitigation.

- In line with DfT Circular 01/2022 (paragraph 34), National Highways and HDC agree that from a transport perspective, the evidence provided demonstrates that the planned growth is deliverable, and that the funding, partners and relevant processes are in place to enable the delivery of infrastructure; or that there is a realistic prospect that longer term investment can be secured within the timescales envisaged.

6.5 Emerging SOCG

6.5.1 In addition to the signed or agreed (but awaiting signing) SoCGs referred to in the previous section, cooperation with the following partners means that the preparation of SoCGs is underway. As soon as they are agreed and signed, the following SoCG will be forwarded to the Inspectorate and added to the Examination Library.

Leicestershire County Council: Transport

6.5.2 Joint working is ongoing to address the matters raised by the Local Transport Authority in their regulation 19 consultation response, including agreeing proposed modifications to the submission local plan. A SoCG is anticipated to be agreed in June/July and will be submitted to the Examination once complete.

Historic England: Heritage

6.5.3 The SoCG with Historic England responds to Historic England's Regulation 19 representations regarding the wording of DM03, the inclusion of archaeology as a constraint and opportunity outlined in Appendix 6 (Masterplanning Requirements for Policy SA02, and the exclusion of the Stretton Magna deserted village, two fishponds and moated site Scheduled Monument (SM) from the site boundary of site OA1 (Land South of Gartree Road).

6.5.4 Outstanding matters, including the definition of the buffer surrounding the SM, will be subject to further discussions between the parties to explore potential approaches and determine an appropriate way forward.

Land South of Gartree Road: Deliverability

Harborough Duty to Cooperate Statement of Compliance

- 6.5.5 This SoCG focuses on delivery of the site and confirming the willingness of the development partners to bring the site forward and to meet the requirements of the local plan policy. The Statement sets out areas of common ground in relation to education, environment and design, flood risk and water management, housing, heritage, employment provision, provision of travelling showpeople, transport and utilities. There are no areas of disagreement identified.

Land North of Market Harborough: Deliverability

- 6.5.6 This SoCG focuses on allocations MH2 and MH3 and confirms agreement of the requirements for the site including temporary relocation of the showground, education provision, cemetery provision, appropriate buffer for gas pipeline, and assessment of odour from the animal rendering plant north of the site. The statement sets out common ground of constraints analysis which in turn results in a requirement to move the secondary school land from MH2 to MH3 and allow for additional dwellings on MH2 to compensate. There are no areas of disagreement identified.

6.6 Conclusion

- 6.6.1 This Statement of Compliance provides a comprehensive and transparent account of how the Council has collaborated to date with all relevant Duty to Cooperate partners and organisations throughout the preparation of the Local Plan. It demonstrates that through the range of activities undertaken, the Council has met the requirements of the Duty to Cooperate.
- 6.6.2 The Council is continuing to engage and work with partners to address any outstanding issues and the agreement and signing of outstanding SoCGs.

Appendices

Appendix 1: Duty to Cooperate Activities Register

Harborough Duty to Cooperate Statement of Compliance

Date	Organisation(s)	Attendees	Purpose of the meeting (agenda)	Outcomes of the meeting (key actions or agreements)	Cross boundary issues discussed
Bimonthly	Members' Advisory Group: Blaby District Council Charnwood Borough Council Hinckley and Bosworth Borough Council Leicester City Council Leicestershire County Council Melton Borough Council North West Leicestershire District Council Oadby and Wigston Borough Council Leicester and Leicestershire Enterprise Partnership (LLEP) Harborough District Council Leicestershire County Council Highway Authority Leicester City Highway Authority		Bimonthly meetings to oversee all joint strategic planning work. Attended by a councillor from each authority and an observer from the LLEP		Housing requirements and distribution (including unmet need issues) Economy and employment requirements and distribution including strategic distribution (strategic B8) Affordable Housing, Housing Mix, Homes for Older Persons & Others with Specialist Needs
Monthly	Strategic Planning Group: Blaby District Council Charnwood Borough Council Hinckley and Bosworth Borough Council Leicester City Council Leicestershire County Council Melton Borough Council North West Leicestershire District Council Oadby and Wigston Borough Council Harborough District Council Leicestershire County Council Highway Authority Leicester City Highway Authority Homes England		Monthly meetings to discuss strategic planning in each constituent authority.		Housing requirements and distribution (including unmet need issues) Economy and employment requirements and distribution including strategic distribution (strategic B8) Affordable Housing, Housing Mix, Homes for Older Persons & Others with Specialist Needs

Harborough Duty to Cooperate Statement of Compliance

Date	Organisation(s)	Attendees	Purpose of the meeting (agenda)	Outcomes of the meeting (key actions or agreements)	Cross boundary issues discussed
Regular	Planning Officers' Forum: Blaby District Council Charnwood Borough Council Hinckley and Bosworth Borough Council Leicester City Council Leicestershire County Council Melton Borough Council North West Leicestershire District Council Oadby and Wigston Borough Council Harborough District Council		Formal meetings of Chief Officers responsible for planning and transport services in Leicester and Leicestershire which provide advice to the Strategic Planning Group.		Housing requirements and distribution (including unmet need issues) Economy and employment requirements and distribution including strategic distribution (strategic B8) Affordable Housing, Housing Mix, Homes for Older Persons & Others with Specialist Needs
Regular	Leicestershire County Council Highway Authority Leicester City Highway Authority National Highways Harborough District Council Blaby District Council Charnwood Borough Council Hinckley and Bosworth Borough Council Leicester City Council Leicestershire County Council Melton Borough Council North West Leicestershire District Council Oadby and Wigston Borough Council		Regular meetings to discuss transport modelling of high level options.		Highways and transport modelling Cross boundary sites/impact of potential strategic sites.

Harborough Duty to Cooperate Statement of Compliance

Date	Organisation(s)	Attendees	Purpose of the meeting (agenda)	Outcomes of the meeting (key actions or agreements)	Cross boundary issues discussed
21/09/2023	Harborough District Council Oadby and Wigston Borough Council	Tess Nelson, Robert Thornhill (Harborough District Council) Lisa Chevallereau, Adrian Thorpe Jamie Carr, Ed Morgan (Oadby & Wigston Borough Council)	<ul style="list-style-type: none"> Local Plan Update Housing Need Infrastructure Requirements Joint Evidence Base Cross Boundary Issues Potential Transport Route Green Wedges Cross Boundary HIA 	<p>Action</p> <ul style="list-style-type: none"> OWBC and HDC to schedule a meeting towards the end of the year to continue the conversations. <p>Agreements</p> <ul style="list-style-type: none"> cross-boundary contributions and further solidified policies in OWBC's next Local Plan. Viability and IDP (Local and Strategic) will be appointed soon. Keep in touch to consider joint-commissioning. Green Wedges need retaining to create a green corridor and there needs to be a collaborative approach as both Councils most viable land plots for development are close to, or on, OWBC's boundary. 	<p>Housing requirements and distribution (including unmet need issues)</p> <p>Economy and employment requirements and distribution including strategic distribution (strategic B8)</p> <p>Highways and transport Green wedges</p> <p>Cross boundary sites/impact of potential strategic sites.</p>
11/01/2024	Leicestershire County Council Harborough District Council	Becci Knight, Ian Sharpe (Leicestershire County Council) Rob Thornhill / Jo Ellershaw (Harborough District Council)	<ul style="list-style-type: none"> LCC SOS Harborough District Narrative Changes to education School places/capacity New Harborough LP Potential future issues 	<ul style="list-style-type: none"> SOS to review I&OCD and make a representation HDC to share refined options with SOS (ASAP) Queries on Harborough District Narrative (Mar 23) to BK via email Regular meetings TBA 	Community facilities (health, education, cultural infrastructure)
16/01/2024	Harborough Local Plan Regulation 18 consultation starts and Duty to Cooperate summary document published in evidence base				

Harborough Duty to Cooperate Statement of Compliance

Date	Organisation(s)	Attendees	Purpose of the meeting (agenda)	Outcomes of the meeting (key actions or agreements)	Cross boundary issues discussed
21/02/2024	Harborough District Council NHS	John Richardson, David Atkinson, Terry Begley (Harborough District Council) Laura Robinson, Sarah Bradley Wright, Lorna Simpson (NHS)	<ul style="list-style-type: none"> • Meeting arrangements • S106 • Strategies to improve services and facilities 	<ul style="list-style-type: none"> • Next quarterly meeting to be set up by Laura Robinson (NHS Estates Programme Manager). • Further internal consideration on the appropriate composition of council officers to attend the quarterly meetings. • NHS to provide comments on the Issues and Options. • Add meeting notes to duty to cooperate file. 	Community facilities (health, education, cultural infrastructure)
27/02/2024	Harborough Local Plan Regulation 18 consultation ends				
01/03/2024	Duty to Cooperate review undertaken by DAC Planning on behalf of Harborough District Council				
21/03/2024	Blaby District Council Charnwood Borough Council Leicester City Council Melton Borough Council North West Leicestershire Oadby and Wigston Borough Council	David Burton (Blaby District Council) Ian McDonald, Paul Gilding (Charnwood Borough Council) Joseph Todd (Leicester City Council) Mark Felts (Melton Borough Council) Alison Gibson (North West Leicestershire District Council) Peter Heath (Oadby and Wigston Borough Council)	<ul style="list-style-type: none"> • LPA Summary of Custom and Self Build Register • Legislation update • Local Plan Policies • Monitoring • Promotion • Applications/appeals 	<ul style="list-style-type: none"> • Blaby to circulate CSB appeal decisions that have been received, all to circulate any further updates. 	Community Facilities (health, education, cultural infrastructure)
25/04/2024	Oadby & Wigston Borough Council Harborough District Council	Ed Morgan, Adrian Thorpe, Peter Heath and Lisa Chevallereau (Oadby & Wigston Borough Council) Tess Nelson (Harborough District Council)	<ul style="list-style-type: none"> • Local Plan Update and Timescales • Strategic Priorities • Joint Evidence Base • Individual Evidence Base • County Wide Work 	<ul style="list-style-type: none"> • OWBC to check the capacity levels for health centres and surgeries in the Borough. 	Cross boundary sites/impact of potential strategic sites Community Facilities (health, education, cultural infrastructure) Green wedges Site selection Housing Requirements and Distribution (including unmet need issues) Conservation of natural environment

Harborough Duty to Cooperate Statement of Compliance

Date	Organisation(s)	Attendees	Purpose of the meeting (agenda)	Outcomes of the meeting (key actions or agreements)	Cross boundary issues discussed
30/04/2024	Harborough District Council West Northants Council Hinkley and Bosworth Natural England Rugby Borough Council Leicestershire County Council Environment Agency North West Leicestershire Council Oadby and Wigston Council Melton Borough Council Leicester City Council NHS ICB North Northants Council Charnwood Borough Council National Highways Blaby District Council DAC Planning	Lesley Aspinall, Terry Begley, Tess Nelson (Harborough District Council) Amanda Jacobs, Kelly Kingston (West Northants Council) Wendy Hague (Hinkley and Bosworth) Roslyn Deeming (Natural England) Hayley Smith (Rugby Borough Council) Jenna Parton, Julie Thomas, Natalie Howden (Leicestershire County Council) Nick Wakefield (Environment Agency) Sarah Lee, Karen Beavin (North West Leicestershire Council) Ed Morgan (Oadby and Wigston Council) Seb Wilkins (Melton Borough Council) Paul Statham (Leicester City Council) Lorna Simpson, Sarah Bradleywright (NHS ICB) Samuel Humphries (North Northants Council) Katie Mills (Charnwood Borough Council) Russell Gray (National Highways) Kevin Exley (Blaby District Council) Tim Parton, Charlotte Steele (DAC Planning)	Duty to Cooperate Workshop <ul style="list-style-type: none"> • Feedback on the Regulation 18 Issues and Options Consultation responses • Update on the emerging Local Plan and spatial strategy • Proposed DtC engagement activities • Approach to the production of DtC SoCG • Discussion on identified strategic cross-boundary issues • Work on the baseline assessment for the IDP and other emerging evidence base studies 	n/a	Housing requirements and distribution (including unmet need issues) Affordable housing, housing mix, homes for older persons and others with specialist needs Gypsies, Travellers and Travelling Showpeople Economy and employment requirements and distribution including strategic distribution Retail, leisure and other commercial development Highways and transport Water issues (supply, wastewater, quality, flood risk) Other infrastructure including telecommunications, security, waste management, minerals and energy Community facilities (health, education, cultural infrastructure) Conservation of the natural environment including Biodiversity Net Gain/Local nature Recovery Strategy/landscape/Green and Blue Infrastructure Conservation of the built and historic environment, including quality and character Climate change mitigation and adaptation including renewable energy Green wedges Cross boundary sites/impact of potential strategic sites.

Harborough Duty to Cooperate Statement of Compliance

Date	Organisation(s)	Attendees	Purpose of the meeting (agenda)	Outcomes of the meeting (key actions or agreements)	Cross boundary issues discussed
20/05/2024	Harborough District Council Oadby and Wigston Borough Council	Ed Morgan, Jamie Carr Lisa Chevallereau (Oadby & Wigston Borough Council) Tess Nelson, Terry Begley, Jessica Dewar (Harborough District Council)	<ul style="list-style-type: none"> • SHELAA site assessment • Detailed site assessment • Infrastructure Delivery Plan • Highways and transport evidence • Other site wide evidence 	<ul style="list-style-type: none"> • Further discussion required on a site allocation design guide • Joint meeting with Education required • cross-boundary assessment for the Land South of Gartree Road site required for SFRA and BNG 	Community Facilities (health, education, cultural infrastructure) Cross boundary sites/impact of potential strategic sites
29/05/2024	Leicester City Council Harborough District Council	David Atkinson (Harborough District Council) Robert Thornhill (Harborough District Council) Fabian D'Costa, Paul Statham, Paul O'Neill (Leicester City Council)	<ul style="list-style-type: none"> • Update on Leicester Local Plan • Harborough District Council Local Plan update • Leicester's post-2036 unmet need • Infrastructure • Scraftoft Golf Course 	<ul style="list-style-type: none"> • Consider production of SoCG between LCC and HDC on education and transport • LCC to hold a DtC meeting with Leicestershire authorities to discuss approach to post-2036 unmet housing need 	Housing requirements and distribution (including unmet need issues) Community Facilities (health, education, cultural infrastructure) Highways and Transport
04/06/2024	NHS Harborough District Council	Louise Robinson, Rebecca Robinson, Sarah Bradleywright, J Munson (NHS) Terry Begley, David Atkinson, Krupa Sudera (Harborough District Council)	<ul style="list-style-type: none"> • ICB team update: estates, place led, contracts, I&T • Local authority update, local plan update • S106 funding 	<ul style="list-style-type: none"> • HDC to pass on healthcare related community engagement 	Community Facilities (health, education, cultural infrastructure)
04/06/2024	North West Leicestershire Council Harborough District Council Iceni	Ian Nelson, Sarah Lee (North West Leicestershire Council) Rob Thornhill, Joanna Ellershaw (Harborough District Council) Nick Ireland (Iceni)	Meeting to discuss approach to meeting strategic warehousing need	<ul style="list-style-type: none"> • Updated range / quantum recommendation for HDC • Interim Position Note / Advice to share with NWLDC • Issue to be flagged with L&L Strategic Planning Partnership 	Economy and employment requirements and distribution including strategic distribution (strategic B8)
06/06/2024	Leicestershire County Council Harborough District Council	Becki Knight, Rebecca Henson, Ian Sharpe (Leicestershire County Council) David Atkinson, Terry Begley, Tess Nelson (Harborough District Council)	<ul style="list-style-type: none"> • Secondary school provision and capacity • Cross boundary sites and highways 	<ul style="list-style-type: none"> • Conversations with Urban and Civic need to be comprehensive and coordinated • Further consideration of options to create additional school capacity 	Cross boundary sites/impact of potential strategic sites Community Facilities (health, education, cultural infrastructure) Highways and Transport

Harborough Duty to Cooperate Statement of Compliance

Date	Organisation(s)	Attendees	Purpose of the meeting (agenda)	Outcomes of the meeting (key actions or agreements)	Cross boundary issues discussed
21/06/2024	Leicester & Leicestershire Partnership	Grant Butterworth (Leicester City Council) Julie Thomas, Sharon Wiggins, Rebecca Henson (Leicestershire County Council) Richard Bennett (Charnwood Borough Council) Jonathan Hodge (Blaby District Council) David Atkinson, Jessica Dewar (Harborough District Council) Chris Brown (Hinckley and Bosworth Borough Council) Jorge Fiz Alonso, Sarah Legge (Melton Borough Council) Chris Elston, Karen Beavin (North West Leicestershire District Council) Adrian Thorpe (Oadby and Wigston Borough Council)	<ul style="list-style-type: none"> Identifying approach taken by Leicestershire authorities in Local Plans to unmet need 	<ul style="list-style-type: none"> Confirmed position of participating authorities Arrange further DtC meetings 	Housing requirements and distribution (including unmet need issues)
11/07/2024	Harborough District Council Oadby and Wigston Borough Council	Lisa Chevallereau, Ed Morgan (Oadby & Wigston Borough Council) Jessica Dewar, Tess Nelson, Robert Thornhill, Terry Begley (Harborough District Council) Sara Dilmamode (PlanIn - Harborough District Council) Charlotte Steele (DAC Planning - Harborough District Council)	<ul style="list-style-type: none"> Secretariat arrangements Draft Memorandum of Understanding Emerging Joint Evidence Site promoter evidence Site Allocation Policy 	<ul style="list-style-type: none"> O&WBC to share comments on MOU HDC and O&WBC to share SHELAA site assessments of cross boundary site HDC and O&WBC to share updates and cost breakdowns on joint evidence base studies O&WBC and HDC to meet with LCC on education 	Cross boundary sites/impact of potential strategic sites Community Facilities (health, education, cultural infrastructure)

Harborough Duty to Cooperate Statement of Compliance

Date	Organisation(s)	Attendees	Purpose of the meeting (agenda)	Outcomes of the meeting (key actions or agreements)	Cross boundary issues discussed
12/07/2024	Rugby Borough Council Hinckley & Bosworth Borough Council Warwickshire County Council Harborough District Council North Warwickshire Borough Council Cannock Chase District Council Midlands Connect Staffordshire County Council Nuneaton & Bedworth Borough Council Warwickshire Police Leicestershire County Council North West Leicestershire District Council National Highways South Leicestershire	MP John Slinger, Cllr Tony Gillias (Rugby Borough Council) Cllr Bill Crooks, Bill Cullen, Sonia Timmington (Hinckley & Bosworth Borough Council) Richard Baxter-Payne, Adrian Hart (Warwickshire County Council) Cllr Rosita Page, David Atkinson (Harborough District Council) Mike Dittman (North Warwickshire Borough Council) Sushil Birdi (Cannock Chase District Council) Sarah Spink (Midlands Connect) Will Spencer (Staffordshire County Council) Cllr Rob Roze, Chris Kingham, Maria Bailey (Nuneaton & Bedworth Borough Council) Sarah Etienne (Warwickshire Police) Cllr Ozzy O'Shea, Ben Simm (Leicestershire County Council) Paul Stone (North West Leicestershire District Council) Ian Doust, Kamaljit Khokhar (National Highways) Denise Beedell (Logistics Members) MP Alberto Costa (South Leicestershire)	<ul style="list-style-type: none"> • Presentation from Logistics UK • National Highways update/presentation of Net Zero Strategy • Sub-National Transport Body updates • A5 Safety and Enforcement Strategy update • Environmental Matters • Local Plan/Key Housing and Employment Sites • Lobbying, communication and MP engagement 	<ul style="list-style-type: none"> • Updates provided by National Highways and Midlands Connect and relevant authorities. 	Highways and Transport

Harborough Duty to Cooperate Statement of Compliance

Date	Organisation(s)	Attendees	Purpose of the meeting (agenda)	Outcomes of the meeting (key actions or agreements)	Cross boundary issues discussed
17/07/2024	NW Leicestershire District Council Oadby and Wigston Borough Council Hinckley and Bosworth Borough Council Blaby District Council Leicestershire County Council Harborough District Council	Karen Beavin (NL&L Joint Strategic Planning Manager) Jamie Carr (Oadby and Wigston Borough Council) Richard Thresh (Hinckley and Bosworth Borough Council) Kevin Exley (Blaby District Council) Andrew Avison, Andy Yeomanson (Leicestershire County Council) Rob Thornhill (Harborough District Council)	<ul style="list-style-type: none"> • South Leicestershire Statement of Common Ground • Transport Topic Papers • Transport policies • Delivering strategic infrastructure 	<ul style="list-style-type: none"> • All to discuss this internally with managers with a view to getting agreement to progress this work: <ul style="list-style-type: none"> o S. Leicestershire SoCG o Transport Topic Papers o transport policies o approach to delivering long-term strategic infrastructure. 	Highways and Transport
08/08/2024	Harborough District Council Oadby and Wigston Borough Council	Lisa Chevallereau, Jamie Carr, Peter Heath (Oadby & Wigston Borough Council) Jessica Dewar, Tess Nelson (Harborough District Council) Charlotte Steele (DAC Planning - Harborough District Council)	<ul style="list-style-type: none"> • Draft Memorandum of Understanding • Site promoter evidence • Emerging Joint Evidence 	<ul style="list-style-type: none"> • JD to send schedule of IDP meetings to OWBC and check if more IDP contacts are needed. • HDC to share draft site allocation policy with OWBC in coming weeks. • OWBC to share draft site allocation policy template with HDC once drafted. • HDC and OWBC to arrange a meeting with education and to invite Urban & Civic and Homes England. • HDC and OWBC to gain more clarity on masterplan approach, community engagement, phasing and trajectory from developer meeting on 8 August. • PH to share draft SFRA with HDC. • HDC to share Aspinall Verdi's emerging assumptions with OWBC. • HDC and OWBC to discuss with respective consultants the production of one joint VA or 	Cross boundary sites/impact of potential strategic sites Community Facilities (health, education, cultural infrastructure) Water issues (supply, wastewater, water quality, flood risk)

Harborough Duty to Cooperate Statement of Compliance

Date	Organisation(s)	Attendees	Purpose of the meeting (agenda)	Outcomes of the meeting (key actions or agreements)	Cross boundary issues discussed
				two separate VA for the site. • Discuss next steps for potential joint work on the site for the IDP, VA and Design Code at next meeting.	

Harborough Duty to Cooperate Statement of Compliance

Date	Organisation(s)	Attendees	Purpose of the meeting (agenda)	Outcomes of the meeting (key actions or agreements)	Cross boundary issues discussed
12/09/2024	Harborough District Council Oadby and Wigston Borough Council	Ed Morgan, Jamie Carr, Lisa Chevallereau, Peter Heath, Adrian Thorpe (Oadby & Wigston Borough Council) Jessica Dewar, Tess Nelson, Terry Begley (Harborough District Council) Asuka Onishi (DAC Planning - Harborough District Council)	<ul style="list-style-type: none"> Minutes & Actions from last meeting (08.08.2024) Draft Memorandum of Understanding (TB) Site promoter ongoing engagement and evidence Emerging Joint Evidence 	<ul style="list-style-type: none"> Update MoU: Reflect July comments, send by Tuesday. Planning application: Modify existing comments. Education-related meeting: next week. Confirm SHELAA assessment method. Verify site submission process. Create concise design guide. SFRA report: Confirm by Friday. 	<p>Housing requirements and distribution (including unmet need issues)</p> <p>Community Facilities (health, education, cultural infrastructure)</p> <p>Water issues (supply, wastewater, water quality, flood risk)</p> <p>Conservation of the natural environment including Biodiversity Net Gain/Local nature Recovery Strategy/landscape/Green and Blue Infrastructure</p>
17/09/2024	Blaby District Council Charnwood Borough Council Hinckley and Bosworth Borough Council Leicestershire County Council North West Leicestershire District Council Leicester and Leicestershire Partnership Harborough District Council	Vicky Chapman (Blaby District Council) Katie Mills (Charnwood Borough Council) Wendy Hague (Hinckley and Bosworth Borough Council) Sharon Wiggins (Leicestershire County Council) Sarah Lee (North West Leicestershire District Council) Karen Beavin (Leicester and Leicestershire Partnership) Robert Thornhill, Joanna Ellershaw (Harborough District Council) Tim Parton (Harborough District Council / DAC Planning)	<ul style="list-style-type: none"> Local Plan preparation update Emerging need for strategic B8 and proposed allocations within Harborough District Approach to producing statements of common ground Approach to addressing strategic B8 needs for other L&L authorities 	<ul style="list-style-type: none"> The draft HDC Icen strategic B8 study will be shared for review and comment once completed. HDC will consider further the approach and content for a SoCG regarding strategic B8 needs. 	<p>Economy and employment requirements and distribution including strategic distribution (strategic B8)</p>

Harborough Duty to Cooperate Statement of Compliance

Date	Organisation(s)	Attendees	Purpose of the meeting (agenda)	Outcomes of the meeting (key actions or agreements)	Cross boundary issues discussed
23/09/2024	West Northamptonshire Council Harborough District Council	Colin Staves, Kelly Kingston (West Northamptonshire Council) Robert Thornhill, Joanna Ellershaw (Harborough District Council) Tim Parton (Harborough District Council / DAC Planning)	<ul style="list-style-type: none"> Local Plan preparation update Emerging need for strategic B8 and proposed allocations within Harborough District Approach to producing statements of common ground Approach to addressing strategic B8 needs for West Northants 	<ul style="list-style-type: none"> The draft HDC IcenI strategic B8 study will be shared for review and comment once completed, likely to be in the next 2-3 weeks. HDC will consider further the approach and content for a SoCG regarding strategic B8 needs. 	Economy and employment requirements and distribution including strategic distribution (strategic B8)
24/09/2024	Rugby Borough Council Harborough District Council	Hayley Smith (Rugby Borough Council) Robert Thornhill, Joanna Ellershaw (Harborough District Council) Tim Parton (Harborough District Council / DAC Planning)	<ul style="list-style-type: none"> Local Plan preparation update Emerging need for strategic B8 and proposed allocations within Harborough District Approach to producing statements of common ground Approach to addressing strategic B8 needs for Rugby Borough 	<ul style="list-style-type: none"> The draft HDC IcenI strategic B8 study will be shared for review and comment once completed, likely to be in the next 2-3 weeks. HDC will consider further the approach and content for a SoCG regarding strategic B8 needs. A further meeting will be arranged following the circulation of the draft IcenI report and draft SoCG. 	Economy and employment requirements and distribution including strategic distribution (strategic B8)
26/09/2024	Harborough District Council Oadby and Wigston Borough Council	Ed Morgan (Oadby & Wigston Borough Council) Jessica Dewar (Harborough District Council) Louise Robinson, Sarah Bradley Wright (NHS ICB Leicester) Asuka Onishi (DAC Planning - Harborough District Council)	<ul style="list-style-type: none"> Local Plan policies IDP SFRA 	<ul style="list-style-type: none"> Emerging draft Harborough Local Plan: agreed to share the emerging draft Local Plan for informal review. Decided to work on creating housing trajectories for SHELAA sites. Confirmed the agreement to proceed with a site-wide viability assessment. Continue discussions with infrastructure providers (education/healthcare) to 	Housing requirements and distribution (including unmet need issues) Community Facilities (health, education, cultural infrastructure)

Harborough Duty to Cooperate Statement of Compliance

Date	Organisation(s)	Attendees	Purpose of the meeting (agenda)	Outcomes of the meeting (key actions or agreements)	Cross boundary issues discussed
				determine needs based on projected growth. <ul style="list-style-type: none"> Decided to consider a joint approach when meeting with infrastructure providers to avoid duplication of efforts across the authorities. 	
30/09/2024	North Northamptonshire Council Harborough District Council	Richard Palmer, Simon James (North Northamptonshire Council) Robert Thornhill, Joanna Ellershaw (Harborough District Council) Tim Parton (Harborough District Council / DAC Planning)	<ul style="list-style-type: none"> Local Plan preparation update Emerging need for strategic B8 and proposed allocations within Harborough District Approach to producing statements of common ground Approach to addressing strategic B8 needs for North Northants 	<ul style="list-style-type: none"> The draft HDC Icen strategic B8 study will be shared for review and comment once completed, likely to be in the next 2-3 weeks. HDC will consider further the approach and content for a SoCG regarding strategic B8 needs. NNC will share relevant evidence base documents which may be of interest. 	Economy and employment requirements and distribution including strategic distribution (strategic B8)

Harborough Duty to Cooperate Statement of Compliance

Date	Organisation(s)	Attendees	Purpose of the meeting (agenda)	Outcomes of the meeting (key actions or agreements)	Cross boundary issues discussed
10/10/2024	Harborough District Council Charnwood Borough Council NHS ICB Melton Borough Council Environment Agency Oadby and Wigston Borough Council West Northamptonshire Council Hinckley and Bosworth Borough Council Rugby Borough Council Anglian Water Leicestershire County Council Leicestershire County Council North Northants Council Natural England Blaby District Council Rutland County Council North West Leicestershire District Council Severn Trent	Tim Parton, Charlotte Steele (DAC Planning, on behalf of HDC) Tess Nelson, Lesley Aspinall, Terry Begley, Stephen Hay, David Atkinson (Harborough District Council) Katie Mills (Charnwood Borough Council) Sarah Bradley Wright (NHS ICB) Jorge Fiz Alonso (Melton Borough Council) Nick Wakefield (Environment Agency) Lisa Chevallereau (Oadby and Wigston Borough Council) Colin Staves (West Northamptonshire Council) Nicola Corbishley, Wendy Hague (Hinckley and Bosworth Borough Council) Hayley Smith (Rugby Borough Council) Darl Sweetland (Anglian Water) Tim Smith (Leicestershire County Council) Sharon Wiggins, Natalie Howden (Leicestershire County Council) Samuel Humphries (North Northants Council) Roslyn Deeming (Natural England) Gemma Yardley (Blaby District Council) Sharon Baker (Rutland County Council) Sarah Lee (North West Leicestershire District Council) Emma Newton (Severn Trent)	Duty to Cooperate workshop #2 <ul style="list-style-type: none"> The emerging draft Harborough Local Plan Spatial Strategy Site allocations Emerging evidence base documents Strategic cross boundary matters Approach to meeting Duty to Cooperate requirements <ul style="list-style-type: none"> Engagement schedule Statement of Common Ground 	<ul style="list-style-type: none"> HDC to share draft LP with stakeholders for informal consultation. HDC to share draft SoCG for comment. 	Housing requirements and distribution (including unmet need issues) Affordable housing, housing mix, homes for older persons and others with specialist needs Gypsies, Travellers and Travelling Showpeople Economy and employment requirements and distribution including strategic distribution Retail, leisure and other commercial development Highways and transport Water issues (supply, wastewater, quality, flood risk) Other infrastructure including telecommunications, security, waste management, minerals and energy Community facilities (health, education, cultural infrastructure) Conservation of the natural environment including Biodiversity Net Gain/Local nature Recovery Strategy/landscape/Green and Blue Infrastructure Conservation of the built and historic environment, including quality and character Climate change mitigation and adaptation including renewable energy Green wedges Cross boundary sites/impact of potential strategic sites.

Harborough Duty to Cooperate Statement of Compliance

Date	Organisation(s)	Attendees	Purpose of the meeting (agenda)	Outcomes of the meeting (key actions or agreements)	Cross boundary issues discussed
10/10/2024	Harborough District Council Oadby and Wigston Borough Council	Ed Morgan (Oadby & Wigston Borough Council) Jessica Dewar (Harborough District Council) Louise Robinson, Sarah Bradley Wright (NHS ICB Leicester) Asuka Onishi (DAC Planning - Harborough District Council)	<ul style="list-style-type: none"> • Health/ICB • Trajectory & site delivery and infrastructure • Oadby SDA draft policy • Viability update (HDC) • Other Evidence 	<ul style="list-style-type: none"> • Agreed to provide more specific information on healthcare needs and potential costs for new and improved facilities. • HDC and W&OBC to consider including provisions for new medical centres or financial contributions in allocation policies for the new developments. • Keep healthcare provision plans in policy documents while still providing enough detail for viability testing and IDP. • Continue cross-boundary collaboration in planning healthcare provisions. 	<p>Housing requirements and distribution (including unmet need issues)</p> <p>Water issues (supply, wastewater, water quality, flood risk)</p> <p>Community Facilities (health, education, cultural infrastructure)</p>
24/10/2024	Harborough District Council Oadby and Wigston Borough Council	Ed Morgan, Lisa Chevallereau (Oadby & Wigston Borough Council) Jessica Dewar (Harborough District Council) Asuka Onishi (DAC Planning - Harborough District Council)	<ul style="list-style-type: none"> • Market capacity study/evidence • Joint Oadby SDA policy • Healthcare needs • IDP updates 	<ul style="list-style-type: none"> • Data Alignment: Agreement to align IDP data, including space standards and population projections, between authorities. • Further Analysis: A need for additional cross-comparison of standards and policies to accommodate unique regional characteristics. • Policy Drafting: Decision to draft a cohesive cross-boundary policy that reflects shared and individual requirements of each authority. • JD to share examples of market capacity study/evidence. • Further meetings will be used to discuss specific aspects of 	<p>Cross boundary sites/impact of potential strategic sites</p> <p>Community Facilities (health, education, cultural infrastructure)</p>

Harborough Duty to Cooperate Statement of Compliance

Date	Organisation(s)	Attendees	Purpose of the meeting (agenda)	Outcomes of the meeting (key actions or agreements)	Cross boundary issues discussed
				healthcare provision planning and to ensure ongoing collaboration on this issue.	
11/11/2024	Correspondence on Strategic B8 needs with L&L authorities, West Northants, Rugby and North Northants Councils				
21/11/2024	Harborough District Council Oadby and Wigston Borough Council	Ed Morgan, Peter Heath, Lisa Chevallereau (Oadby & Wigston Borough Council) Jessica Dewar (Harborough District Council) Asuka Onishi (DAC Planning - Harborough District Council)	<ul style="list-style-type: none"> • Updated policy with AD/JC for final comment all • Evidence request QUOD coordinate a response • Transport Evidence DC • MOU/SoCG all • Local Plan timetable and member engagement in Nov/Dec 	<ul style="list-style-type: none"> • Finalise and circulate updated policies for last comments - AD and JC • Confirm transport evidence with consultants and incorporate findings into documents. • Align on MOU and SoCG drafts to ensure collaboration. • Conduct Local Plan presentations focus on site allocations and policy updates. 	Cross boundary sites/impact of potential strategic sites Highways and Transport
27/11/2024	Leicester City Council Harborough District Council	Andrew Smith, Grant Butterworth, Anthea Anderson, Paul Statham (Leicester City Council) David Atkinson, Tess Nelson, Rob Thornhill (Harborough District Council) Tim Parton (DAC Planning - Harborough District Council)	<ul style="list-style-type: none"> • Duty to Cooperate • Unmet need post 2036 • Oadby SDA • Scraftoft North/other Scraftoft sites – cumulative infrastructure requirements eg schools • Transport Issues and mitigation – City and county engagement - Identifying cross boundary impacts • Whole plan and strategic site viability reports/developer contribution approach • Green wedges/Strategic Green Infrastructure/BNG • Possible three way 	<ul style="list-style-type: none"> • Additional text will be included in the draft Local Plan by HDC regarding joint working between authorities. • HDC to share relevant updated sections of the draft Plan for review and comment. • Leicester CC to share the transport response to AECOM with HDC. • HDC to engage with the Schools Team at Leicester CC. • HDC to share the Green Wedge Assessment when this is available. 	Cross boundary sites/impact of potential strategic sites Highways and Transport Community Facilities (health, education, cultural infrastructure)

Harborough Duty to Cooperate Statement of Compliance

Date	Organisation(s)	Attendees	Purpose of the meeting (agenda)	Outcomes of the meeting (key actions or agreements)	Cross boundary issues discussed
			engagement with O&WBC, HDC and Leicester CC		
05/12/2024	Harborough District Council Oadby and Wigston Borough Council	Lisa Chevallereau, Peter Heath, Ed Morgan (Oadby & Wigston Borough Council) Jessica Dewar, Chris Colbourn (Harborough District Council) Asuka Onishi (DAC Planning - Harborough District Council)	<ul style="list-style-type: none"> • Transport evidence • Agenda for November/ December member sessions and presentations • Updates on GIS mapping and revised policy maps for comment • Green Wedge reviews and proposed boundary adjustments • MOU and SoCG • Timelines and evidence preparation for Local Plan consultations 	<ul style="list-style-type: none"> • Finalise GW review by January 2025 and circulate drafts for input. • Leicester to share their Green Wedge study to inform Harborough’s review. • Establish individual SOCG and explore feasibility of Joint SoCG. • Continue refining policies for Local Plan consultation for site-specific GW changes. • Coordinate with developers and stakeholders to resolve viability concerns. 	Highways and Transport Green Wedges
18/12/2024	Harborough District Council Oadby and Wigston Borough Council Leicester City Council	Lisa Chevallereau (Oadby & Wigston Borough Council) Chris Colbourn (Harborough District Council) Paul O'Neill (Leicester City Council) Louise Fitzgerald (TEP)	<ul style="list-style-type: none"> • Update on the HDC Green Wedges Review undertaken by TEP • Update on similar work being undertaken by other authorities 	<ul style="list-style-type: none"> • Agreed that the draft Green Wedges Assessment report will be circulated for review following the meeting. 	Green Wedges

Harborough Duty to Cooperate Statement of Compliance

Date	Organisation(s)	Attendees	Purpose of the meeting (agenda)	Outcomes of the meeting (key actions or agreements)	Cross boundary issues discussed
19/12/2024	Harborough District Council Oadby and Wigston Borough Council	Ed Morgan (Oadby & Wigston Borough Council) Jessica Dewar, Chris Colbourn (Harborough District Council) Asuka Onishi (DAC Planning - Harborough District Council)	<ul style="list-style-type: none"> • Updates on the timetable • Review policy changes and education provisions • Consultation process for Reg 19 plan • Check on cross-boundary collaboration 	<ul style="list-style-type: none"> • JD/EM to update the draft Local Plan policy wording and send it to KN. • Reg 19 consultation proposed 10th January. • Decisions on submission by the 12th March deadline. • Agreed to share IDP updates 	Strategic site allocations Education infrastructure
28/01/2025 04/02/2025 28/03/2025 28/04/2025 03/06/2025 31/07/2025	Blaby District Council Charnwood Borough Council Hinckley and Bosworth Borough Council Melton Borough Council Leicestershire County Council North West Leicestershire District Council Leicester City Council Harborough District Council	Robert Thornhill, Joanna Ellershaw (Harborough District Council), representatives on behalf of Icen (consultants) and other authorities (P Gilding, K Beavin, S Lee / I Nelson, K Rea / D Shields, K Exley / V Chapman, S Wiggins / T Smith, S Wilkins, R Mkanza, A Thorpe (no minutes)	Steering Group to receive consultant updates on and discuss the preparation of evidence (Leicester & Leicestershire B8 Needs and Apportionment Study)	Further clarity on scope, approach, methodology and technical detail. Agreement of work programme and deadlines with consultants.	Strategic B8 Need, Apportionment across authorities to meet need.
09/06/2025	Harborough District Council, Leicestershire County Council	Tess Nelson, David Atkinson, Rob Thornhill (Harborough District Council), Sharon Wiggins, Julie Thomas, Andy Yeomanson, Tim Smith (Leicestershire County Council), Tim Parton (DAC Planning)	To discuss the draft DtC Statement of Common Ground	Amendments agreed DtC SoCG to address issues raised. Updated SoCG to be shared.	General on-going DtC process discussed.
16/06/2025	Harborough District Council, Historic England	Tess Nelson, Sally Hartshorne (Harborough District Council), Rosamund Worrall (Historic England)	To discuss Historic England's Regulation 19 consultation response	Further clarity on key issues and agreed programme of work to address these	Heritage
11/06/2025	Harborough District Council Leicester City Council (1)	Grant Butterworth, Paul Statham, Paul O'Neil, Ripple Gupta, Andrew Smith (Leicester City Council), David Atkinson, Tess Nelson, Rob Thornhill, Terry Begley (Harborough District Council), Tim Parton (DAC Planning)	To discuss the draft DtC Statement of Common Ground	Proposed amendments to DtC SoCG to address issues raised. Further draft to be shared.	General on-going DtC process discussed.

Harborough Duty to Cooperate Statement of Compliance

Date	Organisation(s)	Attendees	Purpose of the meeting (agenda)	Outcomes of the meeting (key actions or agreements)	Cross boundary issues discussed
26/06/2025	Harborough District Council National Highways	Patrick Thomas, Adrian Chadha, Ijas Muhammed (National Highways), Rob Thornhill, Tess Nelson (HDC), Jen Searle (AECOM)	To discuss and clarify NH Reg 19 consultation response	NH do not consider plan unsound. Clarified points in Reg 19 response re: SRN, IDP links, A5, settlements/ sites of most concern.	Impacts on A5/SRN, cumulative impacts
30/06/2025	Harborough District Council, Leicestershire County Council	David Atkinson, Tess Nelson, Robert Thornhill, Lesley Aspinall (Harborough District Council), Andy Yeomanson, Sharon Wiggins, (Leicestershire County Council)	To discuss LCC Regulation 19 consultation response, discuss the need for any further work and to agree a programme for further work	Work programme agreed to resolve outstanding issues	Highways and Transport
02/07/2025	Harborough District Council, Leicestershire County Council	David Atkinson, Tess Nelson, Robert Thornhill (Harborough District Council), Andy Yeomanson, Janna Walker, Lynne Stinson, Julie Thomas, Steve Boden (Leicestershire County Council), Tim Parton, Asuka Onishi (DAC Planning - Harborough District Council)	To discuss the draft DtC Statement of Common Ground	Agreement for further comments to be circulated and agreed without prejudice at officer level, subject to formal decision-making	Highways and Transport
28/07/2025	Harborough District Council, Leicestershire County Council	Tess Nelson (Harborough District Council), Julie Thomas, Andy Yeomanson, (Leicestershire County Council) Tim Parton, Asuka Onishi (DAC Planning)	To discuss the timetable and process for sign off of the draft DtC Statement of Common Ground and to agree timetable and process for further work.	DtC SoCG to be considered for delegated authority.	Highways and Transport
18/08/2025	Harborough District Council Leicester City Council (2)	Grant Butterworth, Paul Statham, Paul O'Neil, Ripple Gupta (Leicester City Council), David Atkinson, Tess Nelson, Rob Thornhill (Harborough District Council)	To discuss the draft DtC LCC-HDC Statement of Common Discussion re: issues raised in Reg 19 representations	Leicester City to consider amended LCC-HDC DtC SoCG. Reg 19 representations discussed and potential modifications.	General ongoing DtC process. LCC Reg 19 issues. LCC scale of unmet need. HDC position on housing numbers and buffer.

Harborough Duty to Cooperate Statement of Compliance

Date	Organisation(s)	Attendees	Purpose of the meeting (agenda)	Outcomes of the meeting (key actions or agreements)	Cross boundary issues discussed
26/08/2025	Harborough District Council, Leicester City Council (2 follow up)	Tess Nelson, Rob Thornhill (Harborough District Council), Paul Statham, Ripple Gupta (Leicester City Council)	Further clarification of Leicester City Council Regulation 19 representation	Further progress in understanding LCC's issues.	Unmet need 2036-41 and trigger policy (timing of a review)
27/08/2025	Blaby District Council Charnwood Borough Council Hinckley and Bosworth Borough Council Leicester City Council Leicestershire County Council Melton Borough Council North West Leicestershire District Council Oadby and Wigston	Robert Thornhill (Harborough District Council), representatives on behalf of Iceni (consultants) and other authorities (no list)	HENA Steering Group meeting		HENA Joint evidence
28/08/2025	Harborough District Council , Oadby & Wigston Borough Council				Strategic site allocations Education infrastructure
10/09/2025	Harborough District Council Oadby & Wigston Borough Council Leicestershire County Council MHCLG	David Atkinson, Tess Nelson (Harborough District Council)	General education		
23/09/2025	Harborough District Council Leicester City Council (3)	Grant Butterworth, Paul Statham, Paul O'Neil, Ripple Gupta (Leicester City Council), David Atkinson, Tess Nelson, Rob Thornhill, Lesley Aspinall (Harborough District Council)	Meeting (3) to discuss the draft DtC LCC-HDC Statement of Common Ground and issues raised in Reg 19 representations.	Leicester City to consider amended LCC/HDC DtC SoCG. General ongoing DtC process. LCC scale of unmet need. HDC position on housing numbers and buffer.	Unmet need 2036-41 and trigger policy (timing of a review) Potential impacts of cross-boundary allocations - LSGR.

Harborough Duty to Cooperate Statement of Compliance

Date	Organisation(s)	Attendees	Purpose of the meeting (agenda)	Outcomes of the meeting (key actions or agreements)	Cross boundary issues discussed
24/09/2025	Harborough District Council Leicestershire County Council Marrons Hallam Land William Davis	Paul Limb – School Place Planning Officer, Leicestershire County Council (LCC) Robert Thornhill – (HDC) Terry Begley – Principal Planner, Harborough District Council (HDC) Sally Miller – Hallam Land Joanne Christopher – Senior Policy Officer, HDC Sarah Taylor – William Davis Dan Robinson-Wells – Marrons John Carlon – Marrons	To discuss secondary school within MH North.	Further meeting needed re: education provision.	Education - LCC/HDC
15/10/2025	Harborough District Council Leicester City Council (4)	Grant Butterworth, Paul O'Neil (Leicester City Council), David Atkinson, Tess Nelson, Lesley Aspinall (Harborough District Council)	Meeting (5) to discuss the draft DtC LCC-HDC Statement of Common Ground. Further discussion around suggested responses to issues raised in Reg 19 representations. LCC concerns re: unmet housing need 36-41. HDC position on housing numbers and buffer.	General ongoing DtC process. Agreed on response to several issues. More work on approach to unmet housing need 36-41 and LSGR employment approach for next meeting.	Unmet housing need 36-41. Trigger/review policy. Cross-boundary implications of LSGR .
16/10/2025	Harborough District Council Warwickshire County Council	Nicholas Dauncey, Adrian Hart, Tabitha Stratton (WCC) Robert Thornhill, Lesley Aspinall (HDC)	To discuss and clarify main issues in WCC Reg 19 representations	Impacts of MP1/MP2 on A5/SRN (particularly Gibbet Hill roundabout) main issue. Discussed HGV route management agreements. Cumulative impacts on local roads. LCC Highways to be involved.	Cross boundary impacts on A5/SRN of proposed development, mainly related to Magna Park expansion. (Gibbet Hill roundabout concerns)
19/11/2025	Harborough District Council Leicestershire County Council Marrons Hallam Land William Davis	Paul Limb – School Place Planning Officer, Leicestershire County Council (LCC) Sally Miller – Hallam Land Joanne Christopher – Senior Policy Officer, HDC	To discuss education provision	Better understanding of education provision	Education - LCC/HDC

Harborough Duty to Cooperate Statement of Compliance

Date	Organisation(s)	Attendees	Purpose of the meeting (agenda)	Outcomes of the meeting (key actions or agreements)	Cross boundary issues discussed
		Dan Robinson-Wells – Marrons John Carlon – Marrons			
24/11/2025	Harborough District Council Leicester City Council (5)	TBC: Grant Butterworth, Paul O'Neil, Paul Stratham (Leicester City Council), David Atkinson, Tess Nelson, Lesley Aspinall (Harborough District Council)	To discuss outstanding issues raised at Reg 19 representations re: unmet need 36-41 and trigger policy.	LCC seeking further clarity re: unmet housing need 36-41 and timing of a LP review.	Unmet need 2036-41 and trigger policy (timing of a review)
Monthly Land South of Gartree Road Strategic Project Working Group	Homes England, OWBC, Leicestershire County Council, Urban & Civic, HDC	Chris Sharp, Sarah Taylor (Homes England), Jamie Carr, Adrian Thorpe (OWBC), Rebecca Henson (LCC), Caroline Foster (U&C), David Atkinson, Tess Nelson, Wayne Dyer, Mark Patterson (HDC)	To ensure co-ordination between the Councils, the Development Partners and other stakeholders in the development of deliverable proposals for the Land South of Gartree Road	Continued discussions around delivery	Cross boundary strategic allocation (LSGR). The site has a shared draft Local Plan allocation (Site SA02 in HDC Regulation 19 Draft Local Plan and site AP5 in OWBC Draft Local Plan).
Fortnightly Land South of Gartree Road Local Authority Liaison Meetings	OWBC, Leicestershire County Council, HDC, Hive (facilitating)	Jamie Carr, Adrian Thorpe (OWBC), Rebecca Henson (LCC), David Atkinson, Tess Nelson, Wayne Dyer, Mark Patterson (HDC)	To ensure co-ordination between the Councils in the development of deliverable proposals for the Land South of Gartree Road	Continued discussions around delivery	Cross boundary strategic allocation (LSGR). The site has a shared draft Local Plan allocation (Site SA02 in HDC Regulation 19 Draft Local Plan and site AP5 in OWBC Draft Local Plan).
19/11/2025	Homes England, OWBC, Leicestershire County Council, Urban & Civic, HDC, Quod	Chris Sharp, Sarah Taylor (Homes England), Jamie Carr, Adrian Thorpe (OWBC), Rebecca Henson (LCC), Caroline Foster, Tim Brown, (U&C), David Atkinson, Tess Nelson, Wayne Dyer, Mark Patterson (HDC), Tom Dobson, Georgie (Quod)	To discuss progress/outstanding issues	Review of progress on issues	Cross boundary strategic allocation (LSGR). The site has a shared draft Local Plan allocation (Site SA02 in HDC Regulation 19 Draft Local Plan and site AP5 in OWBC Draft Local Plan).

Harborough Duty to Cooperate Statement of Compliance

Date	Organisation(s)	Attendees	Purpose of the meeting (agenda)	Outcomes of the meeting (key actions or agreements)	Cross boundary issues discussed
12/11/2025	Homes England, U&C, LCC, OWBC, HDC, Quod, Aspinall Verdi, CBRE	Caroline Foster(Urban & Civic); David Atkinson (HDC); Rebecca Henson (LCC) ; Wayne Dyer(HDC); Chris Sharp; Sara Taylor (Homes England); Jamie Carr (OWBC); Mark Patterson (HDC); Tom Dobson; Georgie Thomson (Quod); Matt Spilsbury(CBRE); Mark Laidlow (Homes England); Josh Plant (Hive); Tim Sanders(Hive); Christopher Sawtell (Urban & Civic); Martyn Lear(Urban & Civic); Rachel Hull(Homes England); Adam Baker (Aspinall Verdi)	To discuss viability of LSGR	Awareness of master developer model	LSGR SDA
08/12/2025	Blaby District Council Charnwood Borough Council Hinckley and Bosworth Borough Council Melton Borough Council Leicestershire County Council North West Leicestershire District Council Leicester City Council Harborough District Council	Robert Thornhill, Joanna Ellershaw (Harborough District Council), representatives on behalf other authorities (P Gilding, K Beavin, S Lee, D Shields, V Chapman, S Wiggins / T Smith, S Wilkins, R Mkanza, A Thorpe, A Yeomanson)	Planning for growth (Strategic B8) - Harborough position	Updated L&L Strategic B8 SoCG to be drafted by HDC and issued to partners before Christmas 2025	Strategic Distribution
12/01/2026	Warwickshire County Council, Leicestershire County Council, Harborough District Council	Nicholas Dauncey (Warwickshire County Council), Andy Yeomanson (Leicestershire County Council), Rob Thornhill, Lesley Aspinall (Harborough District Council)	To discuss potential impacts of proposed Strategic Warehousing allocations on A5, in particular Gibbet Hill roundabout, and more generally on villages in Rugby Borough.	Arrange meeting with Rugby BC re: their emerging Strategic B8 allocations.	Cross boundary traffic/transport impacts.
15/01/2026	Leicester City Council Harborough District Council	Grant Butterworth, Paul O'Neil, Joseph Todd (Leicester City Council) David Atkinson, Tess Nelson, Lesley Aspinall (Harborough District Council)	To discuss remaining issues raised in Reg 19.	HDC to share draft GW/AoS Topic Paper with Leicester City. Detailed discussions provided further clarity on remaining issues.	Unmet need 2036-41 and trigger policy (timing of a review).

Harborough Duty to Cooperate Statement of Compliance

Date	Organisation(s)	Attendees	Purpose of the meeting (agenda)	Outcomes of the meeting (key actions or agreements)	Cross boundary issues discussed
20/01/2026	Rugby Borough Council, Warwickshire County Council , Leicestershire County Council, Harborough District Council	Hayley Smith (Rugby Borough Council), James Edwards (RBC - Transport Consultant (SLR), Nicholas Dauncey (Warwickshire County Council), Harry Horsley, Steve Bowden (Leicestershire County Council), Robert Thornhill, Lesley Aspinall (Harborough District Council), Andrew Tennant (HDC Transport Consultant (Systra).	To understand potential transport cross-boundary/cumulative impacts/mitigation re: A5 of RBC emerging LP allocations alongside Magna Park draft allocations in HDC Local Plan.	Draft Rugby Local Plan will have 'de minimis' impact on transport (A5/Gibbet Hill).	Cross boundary traffic/transport impacts.

Appendix 2: Statements of Common Ground

Duty to Cooperate SoCG

- **Leicester & Leicestershire Authorities**

SCG-NLP 5: [Blaby District Council – Harborough District Council DtC Statement of Common Ground](#) (March 2025)

SCG-NLP 21: [Charnwood Borough Council – Harborough District Council DtC Statement of Common Ground](#) [Hinckley & Bosworth Borough Council – Harborough District Council DtC Statement of Common Ground](#) (July 2025)

SCG-NLP 7: [Hinckley and Bosworth Borough Council and Harborough District Council Duty to Cooperate Statement of Common Ground](#) (March 2025)

SCG-NLP 20: [Leicestershire County Council – Harborough District Council DtC Statement of Common Ground](#) (July 2025)

SCG-NLP 10: [Melton Borough Council – Harborough District Council DtC Statement of Common Ground](#) (March 2025)

SCG-NLP 15: [North West Leicestershire District Council – Harborough District Council DtC Statement of Common Ground](#) (March 2025)

SCG-NLP 19: [Oadby & Wigston Borough Council – Harborough District Council DtC Statement of Common Ground](#) (May 2025)

- **Other Neighbouring Authorities**

SCG-NLP 14: [North Northamptonshire Council – Harborough District Council DtC Statement of Common Ground](#) (March 2025)

SCG-NLP 16: [Rugby Borough Council – Harborough District Council DtC Statement of Common Ground](#) (March 2025)

SCG-NLP 17: [West Northamptonshire Council – Harborough District Council DtC Statement of Common Ground](#) (March 2025)

- **Other Duty to Cooperate Bodies**

SCG-NLP 6: [Environment Agency – Harborough District Council DtC Statement of Common Ground](#) (March 2025)

SCG-NLP 11: [Historic England – Harborough District Council DtC Statement of Common Ground](#) (March 2025)

SCG-NLP 9: [Homes England – Harborough District Council DtC Statement of Common Ground](#) (March 2025)

SCG-NLP 12: [National Highways – Harborough District Council DtC Statement of Common Ground](#) (March 2025)

Harborough Duty to Cooperate Statement of Compliance

SCG-NLP 8: [Natural England - Harborough District Council DtC Statement of Common Ground](#) (March 2025)

SCG-NLP 13: [NHS - Harborough District Council DtC Statement of Common Ground](#)

Post Regulation 19 Statements of Common Ground (signed)

SCG-NLP 24: [Leicester City and Harborough District Council SoCG relating to Leicester City Council's representation on HDC's Proposed Submission Draft Local Plan \(Regulation 19\)](#) (April 2026)

SCG-NLP 22: [Leicestershire County Council \(Strategic Property Services\) and Harborough District Council relating to Lutterworth East Strategic Development Area](#) (February 2026)

SCG-NLP 25: [National Highways and Harborough District Council: Harborough Local Plan Statement of Common Ground](#) (April 2026)

Post Regulation 19 Statements of Common Ground (agreed and signing underway)

SCG-NLP 23: [Leicester and Leicestershire Authorities Statement of Common Ground relating to Strategic Warehousing Need \(January 2026\)](#) (March 2026)

Other Statements of Common Ground referred to in Statement of Compliance

SCG-NLP 2: [South Leicestershire Local Plan Making Statement of Common Ground \(Nov 2021\)](#)

SCG-NLP 3: [Leicester & Leicestershire Authorities - Statement of Common Ground \(June 2022\)](#)

SCG-NLP 4: [Leicester & Leicestershire Duty to Cooperate Transitional Arrangements in Respect of Unmet Need \(Feb 2025\)](#)

SCG-NLP 18: [Leicester and Leicestershire Authorities Statement of Common Ground relating to Housing Distribution following NPPF and new Standard Method published in December 2024 \(Dec 2025\)](#)

Appendix 3: Links to evidence documents referenced

EMP-NLP 1: [Warehousing and Logistics in Leicester and Leicestershire: Managing growth and change Study\(amended March 2022\)](#)

HSG-NLP 2: [Housing and Employment Needs Assessment \(HENA, June 2022\)](#)

HSG-NLP 3: [HENA – Housing Distribution Paper June 2022](#)

EMP-NLP 2: [Leicester and Leicestershire HENA -Employment Distribution Paper \(June 2022\)](#)

EN-NLP 5: [Joint Water Cycle Scoping Study \(Dec 2024\)](#)

EMP-NLP 6: [Leicester & Leicestershire Strategic Distribution Floorspace Needs Update and Apportionment \(Oct 2025\)](#)

SCG-NLP 4: [Leicester & Leicestershire Duty to Cooperate Transitional Arrangements in Respect of Unmet Need \(Feb 2025\)](#)

HSG-NLP 11: [Updated Housing Distribution Paper \(Nov 2025\)](#)

TRP-NLP 3: [South Leicestershire Joint Transport Assessment Stage 1 \(Jan 2025\)](#)

Appendix 4: Letter of Collaboration from Leicestershire County Council (12 February 2026) reported to Cabinet on 2 March 2026



David Atkinson
Director of Planning
Harborough District Council
The Symington Building
Adam & Eve Street
Market Harborough
Leicestershire
LE16 7AG

Date: 12th February 2026
My Ref: HDCLP
Your Ref:
Contact: Janna Walker
Phone: 0116 305 0785
Fax:
Email: Janna.walker@leics.gov.uk

Without prejudice

Dear David

Harborough Local Plan (2020-2041): Moving forward to resolve outstanding transport and education matters

Following our positive meeting on 5th February 2026, I write to confirm the agreed joint way forward to resolving outstanding transport and education matters in respect of the Harborough Local Plan.

Since Leicestershire County Council's (LCC) response to the Regulation 19 consultation in March 2025 Officers of both Councils have worked positively and collaboratively to address concerns. However, there is still some way to go, and as discussed, a collective approach is required to allow us to move forward to resolve as many outstanding matters as soon as possible.

We agreed to jointly set out a plan for addressing the main modifications required for both transport and education. The details and stages that sit behind this approach have been set out in our recent discussions. These include a continued commitment to joint working through to examination.

For transport, the actions that we have identified to seek to address our concerns are set out in the appendix to this letter. We remain committed to working with you to identify and agree modifications to the Plan and to undertake other actions as identified to address these concerns.

In respect of education the principal outstanding matters relate to pupil yield from speculative development across Harborough District, and in particular demand generated for secondary provision and the land and infrastructure required to support. We remain committed to working with you to identify and agree modifications to the Plan to address these concerns.

As also discussed, if you could please provide a timeline for the sharing of information in respect of the proposed CIL approach, including a CIL viability assessment, this would be most helpful. This will clearly be a key consideration in LCC formulating its position ahead of examination.

Environment and Transport Department
Leicestershire County Council, County Hall, Glenfield, Leicestershire LE3 8RJ
Telephone: 0116 305 0001 Fax: 0116 305 0006 Minicom: 0116 305 0007
Email: etd@leics.gov.uk

Ann Carruthers, Director

www.leicestershire.gov.uk

Harborough Duty to Cooperate Statement of Compliance

I hope the above provides a structure for continued joint working to move us towards a resolution on outstanding matters. As always, I am more than happy to discuss.

Yours sincerely



Janna Walker
Assistant Director – Development & Growth

Appendix: Actions to address Regulation 19 Plan transport matters of concerns

NB: LTA = Local Transport Authority

Transport Evidence
<p>To agree Proposed Modifications to the Plan to, which will be submitted alongside the Plan. Specifically, to:</p> <ul style="list-style-type: none">Provide additional narrative about the Plan’s potential transport impacts, reflecting the outcomes of the Joint Transport Evidence.Set out more clearly the coordinated strategy for seeking to minimise/mitigate the Plan’s transport impacts as far as possible, through narrative and amended or new, policy(ies)<ul style="list-style-type: none">○ To include policy (policies) that respond to and address cumulative impacts, especially on the A6 corridor, including to enable the coordinate consideration of transport impacts and the identification of mitigation.Amend as necessary the wording of relevant policies to ensure:<ul style="list-style-type: none">○ Where it reasonable and appropriate they contribute towards the delivery of the strategic transport infrastructure necessary to enable growth to come forward in the SGP PGC, including to enable delivery of the proposed allocation on Land South of Gartree Road; and○ That the ability to deliver further strategic transport infrastructure in the future is not fettered.Set out a more clearly the explanation of proposed funding arrangements for transport infrastructure, including to address cumulative and cross-boundary impacts*. <p>*Noting that a Community Infrastructure Levy (CIL) is the only lawful option apparent to the LTA (and more widely the County Council).</p> <p>Additionally:</p> <ul style="list-style-type: none">Update Infrastructure Delivery Plan (IDP) as appropriate prior to submission.Preparation and agreement of separate supporting documents as appropriate, likely including at least a Transport Topic Paper.Commitment to continued joint working on emerging SDS evidence, including LTA strategic transport scheme identification and development work.
Policy Approach
<p>To agree Proposed Modifications to the Plan, which will be submitted alongside the Plan. Specifically, to:</p>

Environment and Transport Department
Leicestershire County Council, County Hall, Glenfield. Leicestershire LE3 8RJ
Telephone: 0116 305 0001 Fax: 0116 305 0006 Minicom: 0116 305 0007
Email: etd@leics.gov.uk
Ann Carruthers, Director
www.leicestershire.gov.uk

Ensure recent/emerging LTA plans, policies and strategies, including LTP4, emerging Enabling Travel Choice Strategy (ETCS) and emerging Multi Modal Area Investment Plans (MMAIPs), are referenced and reflected in Plan policies where appropriate (including policies relating to site allocations) and to demonstrate how the Plan has responded to those LTA plans, policies and strategies and will help to deliver on them.

Ensure the policies reflect the vision-led approach to transport introduced by the NPPF 2024 and to ensure the LTA's application of the vision-led approach as set out in its emerging Enabling Travel Choice Strategy is appropriately captured in the Plan's policies.

Set out more clearly the coordinated strategy to minimise/mitigate the Plan's transport impacts as far as possible, through narrative and amended or new, policy(ies):

- To include policy (policies) that respond to and address cumulative impacts, especially on the A6 corridor, including to enable the coordinate consideration of transport impacts and the identification of mitigation.
- Amend as consequentially necessary the wording of relevant policies, including allocation policies relating to Land South of Gartree Road, sites in Great Glen and Kibworth, and sites to the north of Market Harborough.

Set out more clearly the explanation of proposed funding arrangements for transport infrastructure, including to address cumulative and cross-boundary impacts*.

*Noting that a CIL is the only lawful option apparent to the LTA (and more widely the County Council).

Additionally:

Update the Infrastructure Delivery Plan as appropriate prior to submission.

Preparation and agreement of separate supporting documents as appropriate, likely including at least a Transport Topic Paper.

Funding Mechanism (for at transport least transport infrastructure)

To agree Proposed Modifications to the Plan, which will be submitted alongside the Plan. Specifically, to:

Set out more clearly the explanation of proposed funding arrangements for transport infrastructure, including to address cumulative and cross-boundary impacts*.

*Noting that a CIL is the only lawful option apparent to the LTA (and more widely the County Council).

Environment and Transport Department

Leicestershire County Council, County Hall, Glenfield. Leicestershire LE3 8RJ

Telephone: 0116 305 0001 Fax: 0116 305 0006 Minicom: 0116 305 0007

Email: etd@leics.gov.uk

Ann Carruthers, Director

www.leicestershire.gov.uk

Additionally:

- Agreement of an indicative overall timetable for the development of a CIL schedule; examination; and adoption of a CIL.
- Agreement of an approach to dealing with relevant planning applications prior to a CIL being implemented.
- Preparation and agreement of separate supporting documents as appropriate, likely including at least a Local Plan Funding Topic Paper.
- The undertaking of any other work as is thought to be necessary (e.g. further viability assessment work) to enable exploration of the matter at the Plan's Examination in Public, including to respond to Inspector's(s') Matters, Issues and Questions.

Strategic Growth Plan (SGP)

To agree Proposed Modifications to the Plan, which will be submitted alongside the Plan. Specifically, to:

Provide additional narrative about this Plan's crucial role in the delivery of the SGP spatial vision, including:

- So that is clear about what it is seeking to achieve over its lifetime in terms of the vision's delivery; and
- It clearly sets out how it is seeking to provide a platform for the vision's further future delivery (in whatever spatial plan will come after this one).

Amend the wording of relevant policies to:

- Ensure where it reasonable and appropriate they contribute towards the delivery of the strategic transport infrastructure necessary to enable growth to come forward in the SGP Priority Growth Corridor (PGC), including to enable delivery of the proposed allocation on Land South of Gartree Road.
- Ensure that the ability to deliver future strategic transport connectivity to open up growth elsewhere in the PGC is not fettered.
- To set out the 'vision' for these places in the context of their relationship with the 'outside world'.

To make specific reference to Oadby & Wigston (O&W) Borough and the importance to communities in Harborough District of access through O&W Borough by various sustainable modes of transport to the City of Leicester, and the town centres of Wigston, Oadby and South Wigston.

Set out more clearly the explanation of proposed funding arrangements for transport infrastructure, including to address cumulative and cross-boundary impacts*.

*Noting that a CIL is the only lawful option apparent to the LTA (and more widely the County Council).

Environment and Transport Department
Leicestershire County Council, County Hall, Glenfield, Leicestershire LE3 8RJ
Telephone: 0116 305 0001 Fax: 0116 305 0006 Minicom: 0116 305 0007
Email: etd@leics.gov.uk

Ann Carruthers, Director

www.leicestershire.gov.uk