





KEY

-  Harborough District
-  Harborough Sub Areas
-  Open space facility
-  Accessibility standard - 2km driving

Reproduced by permission of Ordnance Survey on behalf of HMSO.

Contains OS data © Crown Copyright and database right 2025. All rights reserved.
 Contains data from OS Zoomstack.
 Harborough District Council 2025. Licence Number 100023843.
 Sources: Esri, TomTom, Garmin, FAO, NOAA, USGS, © OpenStreetMap contributors, and the GIS User Community.



Rev	Description	Drawn	Approved	Date



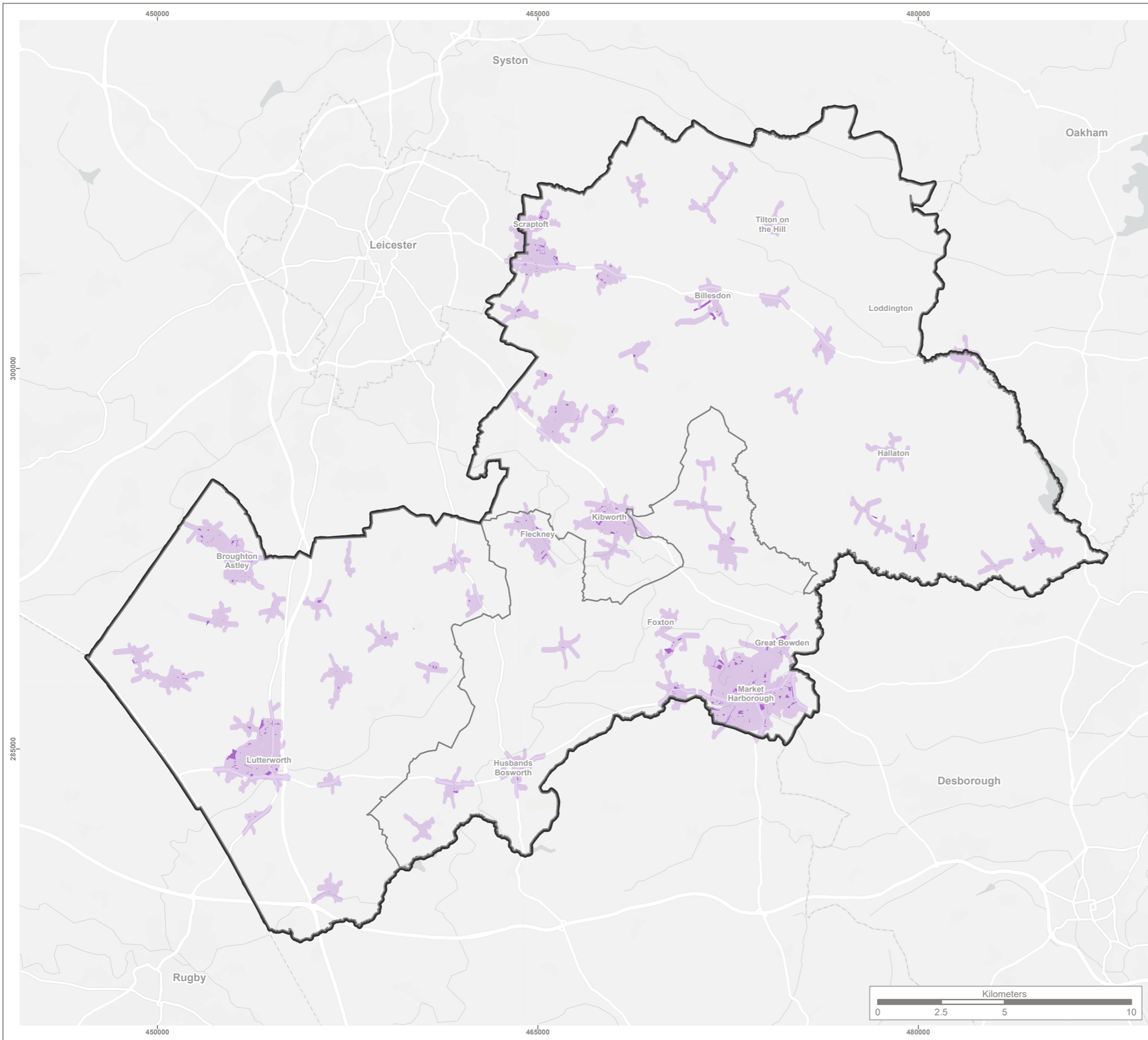
401 Faraday Street, Birchwood Park, Warrington, WA3 6GA
 Tel 01925 844004 e-mail tep@tep.uk.com www.tep.uk.com

Project
Harborough Open Space Strategy Review

Title
**Open Space Accessibility - Proposed Standards
 Allotments, community gardens and urban farms**

Drawing Number
G11133.009.1 Page 1 of 6

Drawn	Checked	Approved	Scale	Date
MG	CW	RM	1:150,000 @ A3	26/09/2025



KEY

- Harborough District
- Harborough Sub Areas
- Open space facility
- Accessibility standard - 800m walking

Reproduced by permission of Ordnance Survey on behalf of HMSO.

Contains OS data © Crown Copyright and database right 2025. All rights reserved.
 Contains data from OS Zoomstack.
 Harborough District Council 2025. Licence Number 100023843.
 Sources: Esri, TomTom, Garmin, FAO, NOAA, USGS, © OpenStreetMap contributors, and the GIS User Community.



Rev	Description	Drawn	Approved	Date



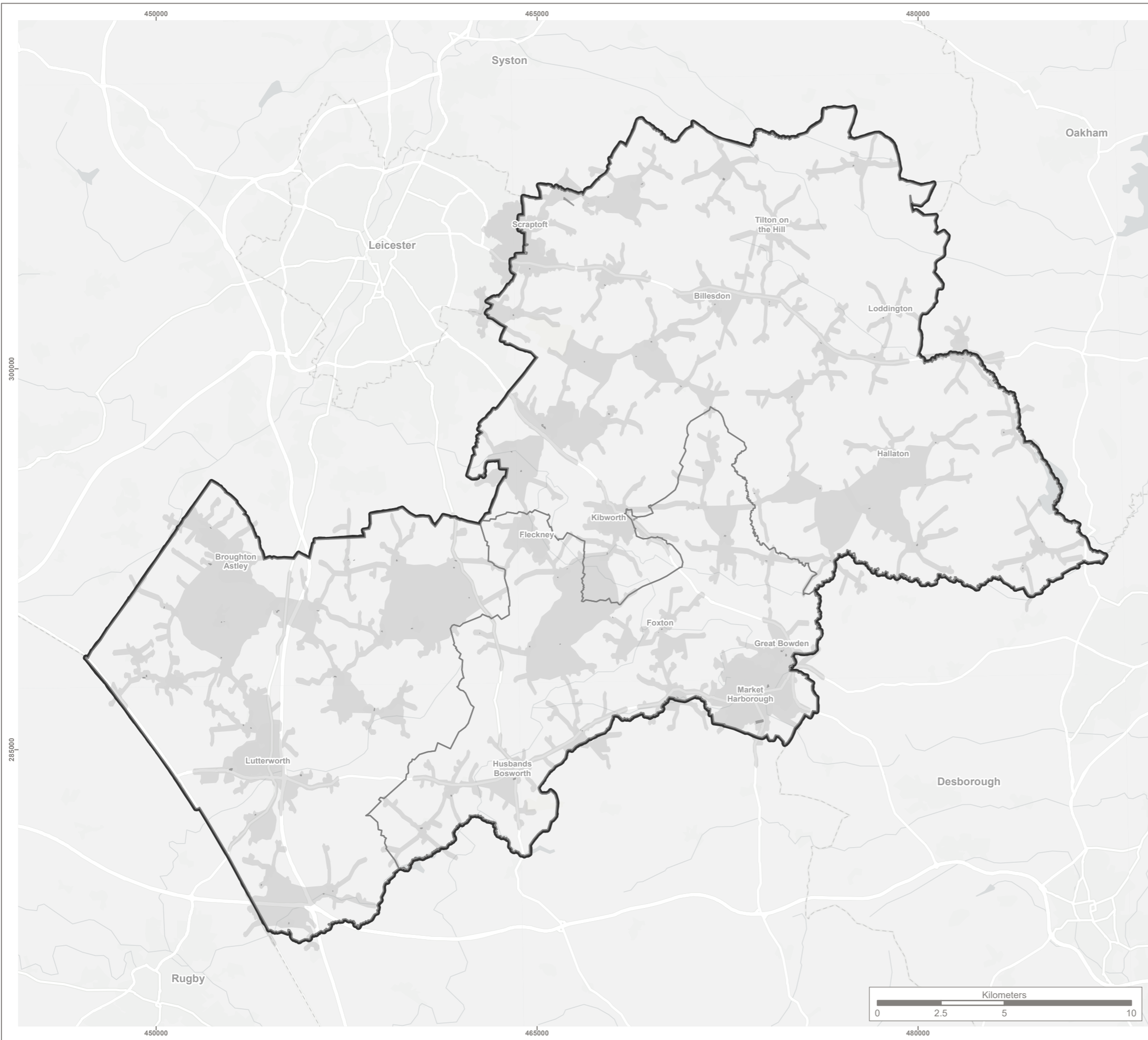
401 Faraday Street, Birchwood Park, Warrington, WA3 6GA
 Tel 01925 844004 e-mail tep@tep.uk.com www.tep.uk.com

Project
Harborough Open Space Strategy Review





Title
**Open Space Accessibility - Proposed Standards
 Amenity greenspace**

Drawing Number
G11133.009.2 Page 2 of 6

Drawn MG	Checked CW	Approved RM	Scale 1:150,000 @ A3	Date 26/09/2025
-------------	---------------	----------------	-------------------------	--------------------



KEY

-  Harborough District
-  Harborough Sub Areas
-  Open space facility
-  Accessibility standard - 2km driving

Reproduced by permission of Ordnance Survey on behalf of HMSO.

Contains OS data © Crown Copyright and database right 2025. All rights reserved.
 Contains data from OS Zoomstack.
 Harborough District Council 2025. Licence Number 100023843.
 Sources: Esri, TomTom, Garmin, FAO, NOAA, USGS, © OpenStreetMap contributors, and the GIS User Community.



Rev	Description	Drawn	Approved	Date



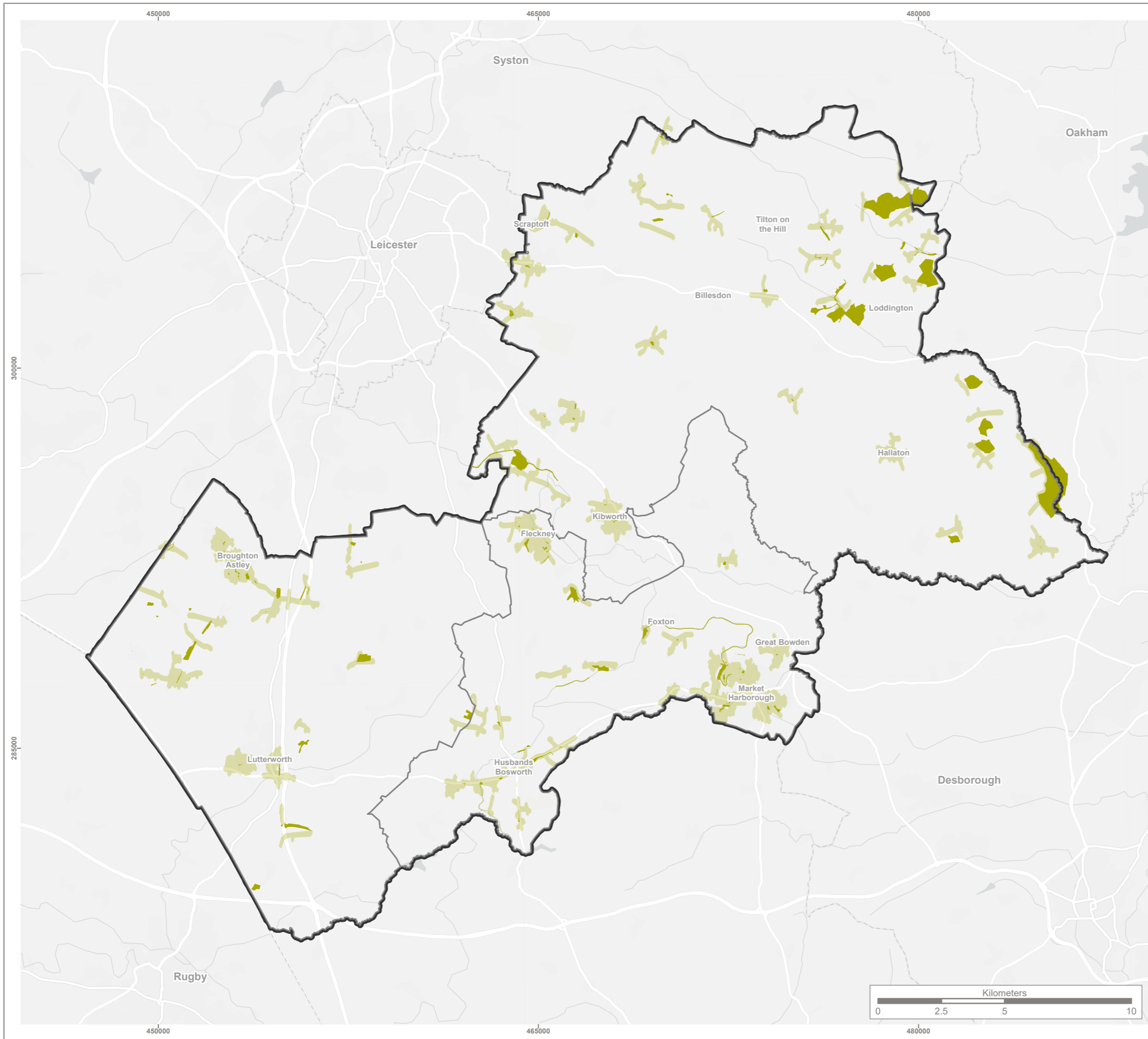
401 Faraday Street, Birchwood Park, Warrington, WA3 6GA
 Tel 01925 844004 e-mail tep@tep.uk.com www.tep.uk.com

Project
Harborough Open Space Strategy Review

Title
**Open Space Accessibility - Proposed Standards
 Cemeteries and churchyards**

Drawing Number
G11133.009.3 Page 3 of 6

Drawn	Checked	Approved	Scale	Date
MG	CW	RM	1:150,000 @ A3	26/09/2025



KEY

- Harborough District
- Harborough Sub Areas
- Open space facility
- Accessibility standard - 720m walking

Reproduced by permission of Ordnance Survey on behalf of HMSO.



Contains OS data © Crown Copyright and database right 2025. All rights reserved.
 Contains data from OS Zoomstack.
 Harborough District Council 2025. Licence Number 100023843.
 Sources: Esri, TomTom, Garmin, FAO, NOAA, USGS, © OpenStreetMap contributors, and the GIS User Community.



Rev	Description	Drawn	Approved	Date



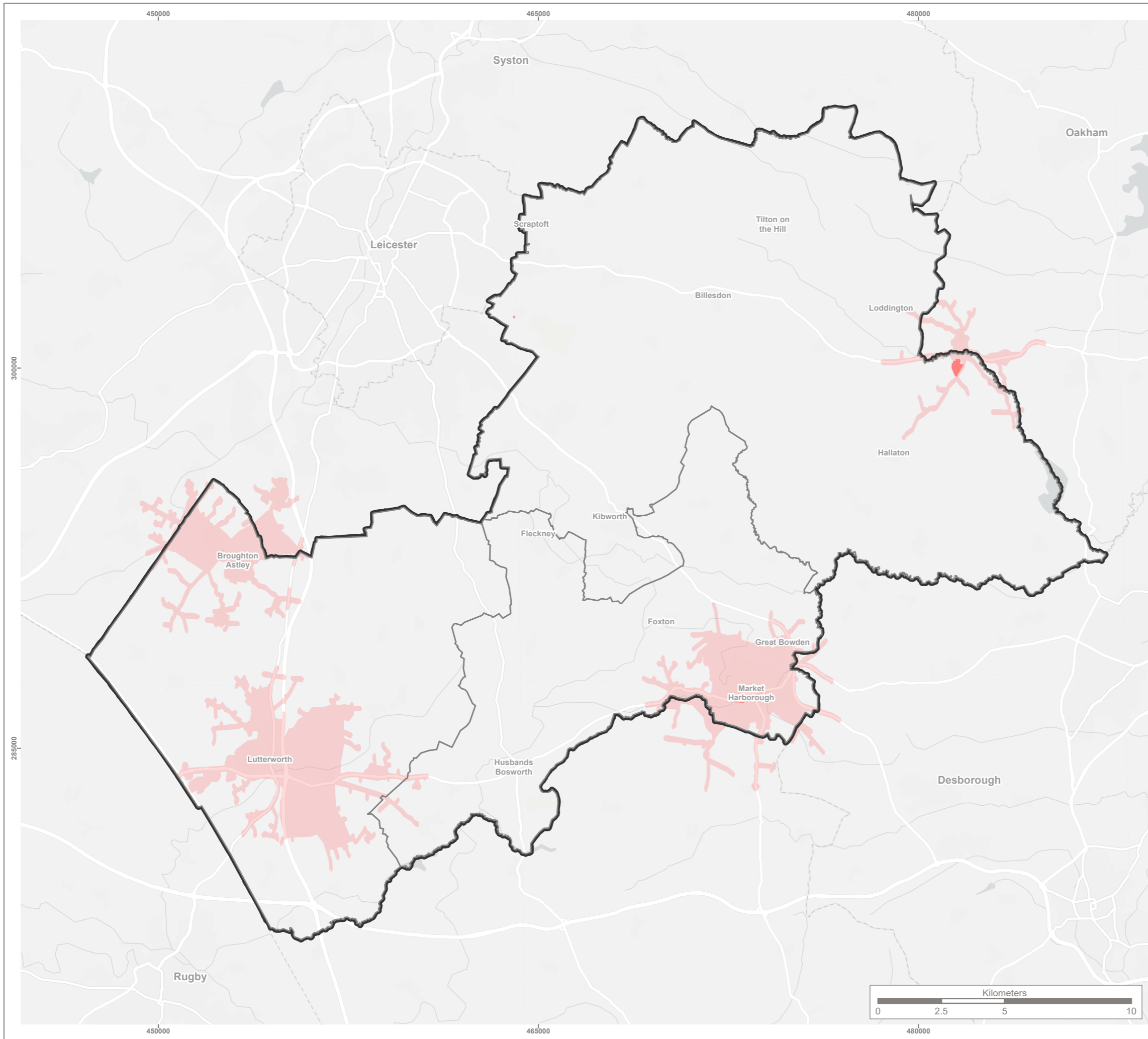
401 Faraday Street, Birchwood Park, Warrington, WA3 6GA
 Tel 01925 844004 e-mail tep@tep.uk.com www.tep.uk.com

Project
Harborough Open Space Strategy Review

Title
**Open Space Accessibility - Proposed Standards
 Natural and semi-natural greenspaces**

Drawing Number
G11133.009.4 Page 4 of 6

Drawn MG	Checked CW	Approved RM	Scale 1:150,000 @ A3	Date 26/09/2025
-------------	---------------	----------------	-------------------------	--------------------



KEY

- Harborough District
- Harborough Sub Areas
- Open space facility
- Accessibility standard - 4km driving

Reproduced by permission of Ordnance Survey on behalf of HMSO.
 Contains OS data © Crown Copyright and database right 2025. All rights reserved.
 Contains data from OS Zoomstack.
 Harborough District Council 2025. Licence Number 100023843.
 Sources: Esri, TomTom, Garmin, FAO, NOAA, USGS, © OpenStreetMap contributors, and the GIS User Community.



Rev	Description	Drawn	Approved	Date



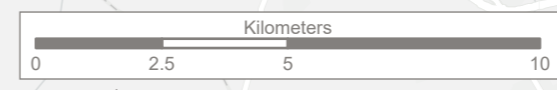
401 Faraday Street, Birchwood Park, Warrington, WA3 6GA
 Tel 01925 844004 e-mail tep@tep.uk.com www.tep.uk.com

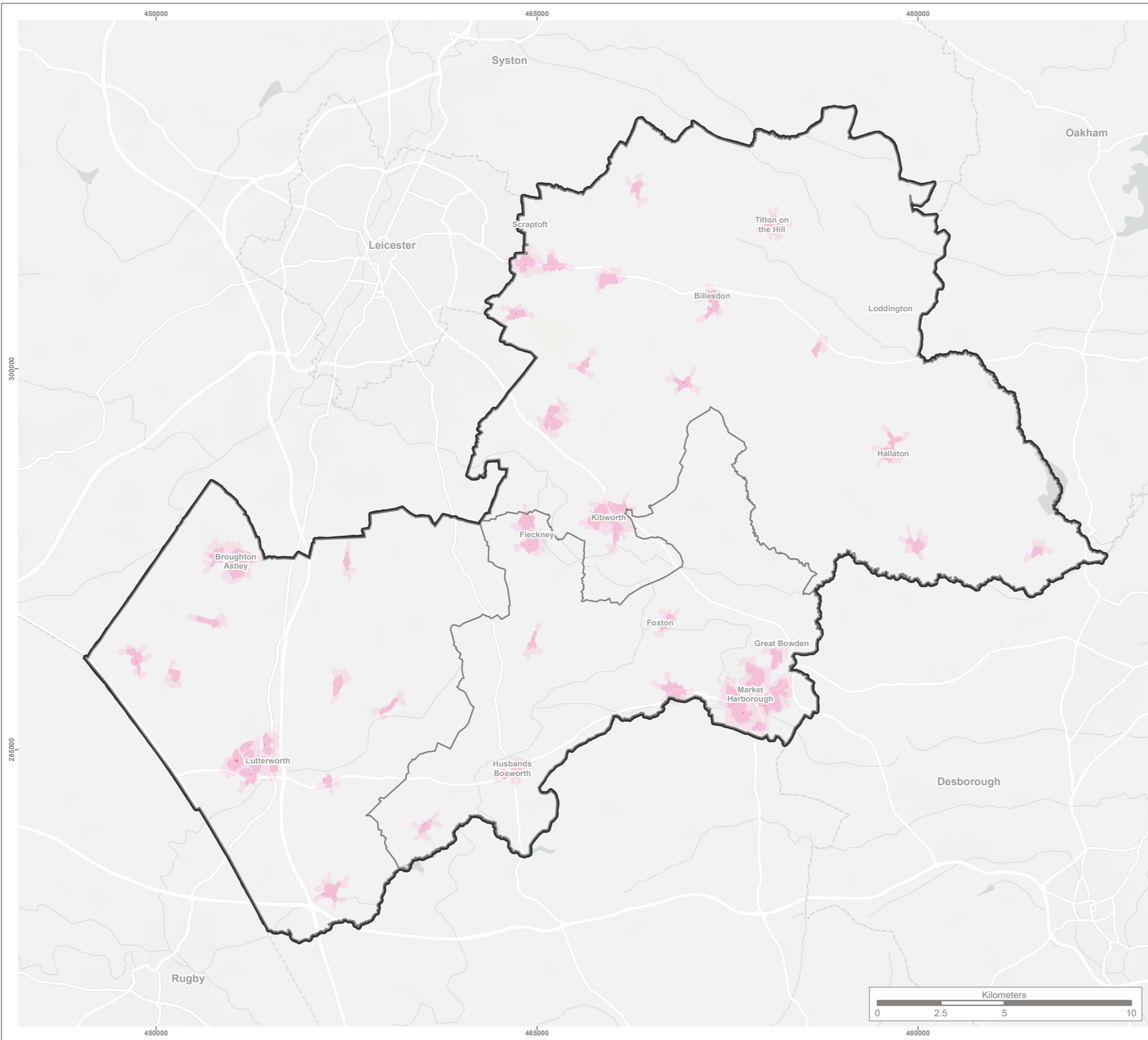
Project
Harborough Open Space Strategy Review

Title
**Open Space Accessibility - Proposed Standards
 Parks and gardens**






Drawing Number
G11133.009.5 Page 5 of 6

Drawn	Checked	Approved	Scale	Date
MG	CW	RM	1:150,000 @ A3	26/09/2025





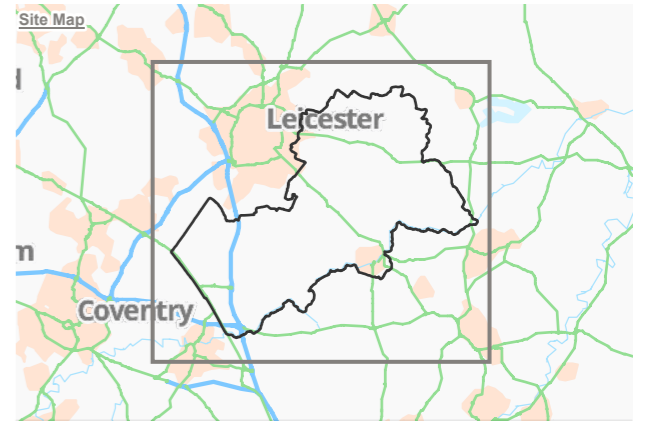
KEY

-  Harborough District
-  Harborough Sub Areas
-  Open space facility
-  Accessibility standard - 400m walking
-  Accessibility standard - 800m walking

Reproduced by permission of Ordnance Survey on behalf of HMSO.



Contains OS data © Crown Copyright and database right 2025. All rights reserved.
 Contains data from OS Zoomstack.
 Harborough District Council 2025. Licence Number 100023843.
 Sources: Esri, TomTom, Garmin, FAO, NOAA, USGS, © OpenStreetMap contributors, and the GIS User Community.



Rev	Description	Drawn	Approved	Date



401 Faraday Street, Birchwood Park, Warrington, WA3 6GA
 Tel 01925 844004 e-mail tep@tep.uk.com www.tep.uk.com

Project
Harborough Open Space Strategy Review

Title
**Open Space Accessibility - Proposed Standards
 Provision for children and young people**

Drawing Number
G11133.009.6 Page 6 of 6

Drawn	Checked	Approved	Scale	Date
MG	CW	RM	1:150,000 @ A3	26/09/2025