

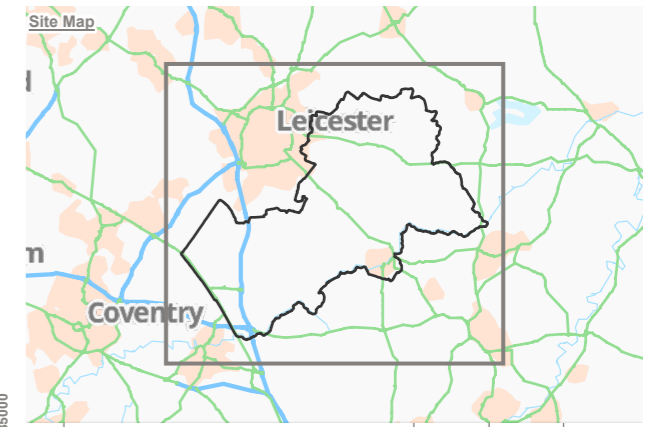
**KEY**

- Harborough District
- Page and page number
- Harborough Sub Areas

**Open Space Value Banding**

- High (34)
- Medium (94)
- Low (180)
- No audit (532)

Reproduced by permission of Ordnance Survey on behalf of HMSO.  
 Contains OS data © Crown Copyright and database right 2025. All rights reserved.  
 Contains data from OS Zoomstack.  
 Harborough District Council 2025. Licence Number 100023843.  
 Sources: Esri, TomTom, Garmin, FAO, NOAA, USGS, © OpenStreetMap contributors, and the GIS User Community.



Rev	Description	Drawn	Approved	Date

**TEP** | **THE ENVIRONMENT PARTNERSHIP**

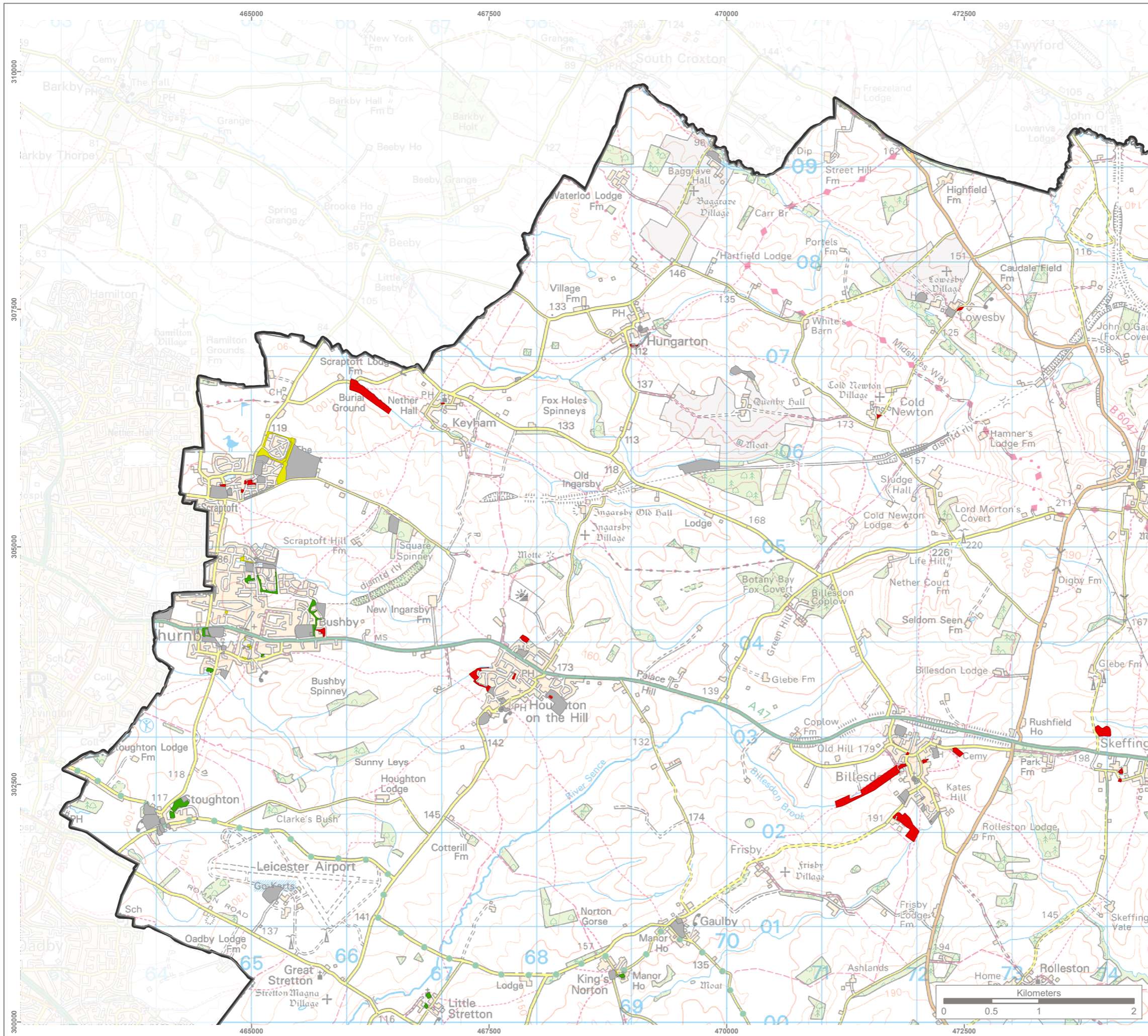
401 Faraday Street, Birchwood Park, Warrington, WA3 6GA  
 Tel 01925 844004 e-mail tep@tep.uk.com www.tep.uk.com

Project  
**Harborough Open Space Strategy Review**

Title  
**Open Space Value Assessment**

Drawing Number  
**G11133.007.1** Page 1 of 10

Drawn	Checked	Approved	Scale	Date
MG	CW	RM	1:150,000 @ A3	31/10/2025



- KEY**
- Harborough District
  - Harborough Sub Areas
- Open Space Value Banding**
- High (12)
  - Medium (9)
  - Low (22)
  - No audit (80)

Reproduced by permission of Ordnance Survey on behalf of HMSO.  
 Contains OS data © Crown Copyright and database right 2025. All rights reserved.  
 Contains data from OS Zoomstack.  
 Harborough District Council 2025. Licence Number 100023843.  
 Sources: Esri, TomTom, Garmin, FAO, NOAA, USGS, © OpenStreetMap contributors, and the GIS User Community.



Rev	Description	Drawn	Approved	Date

**TEP** | **THE ENVIRONMENT PARTNERSHIP**

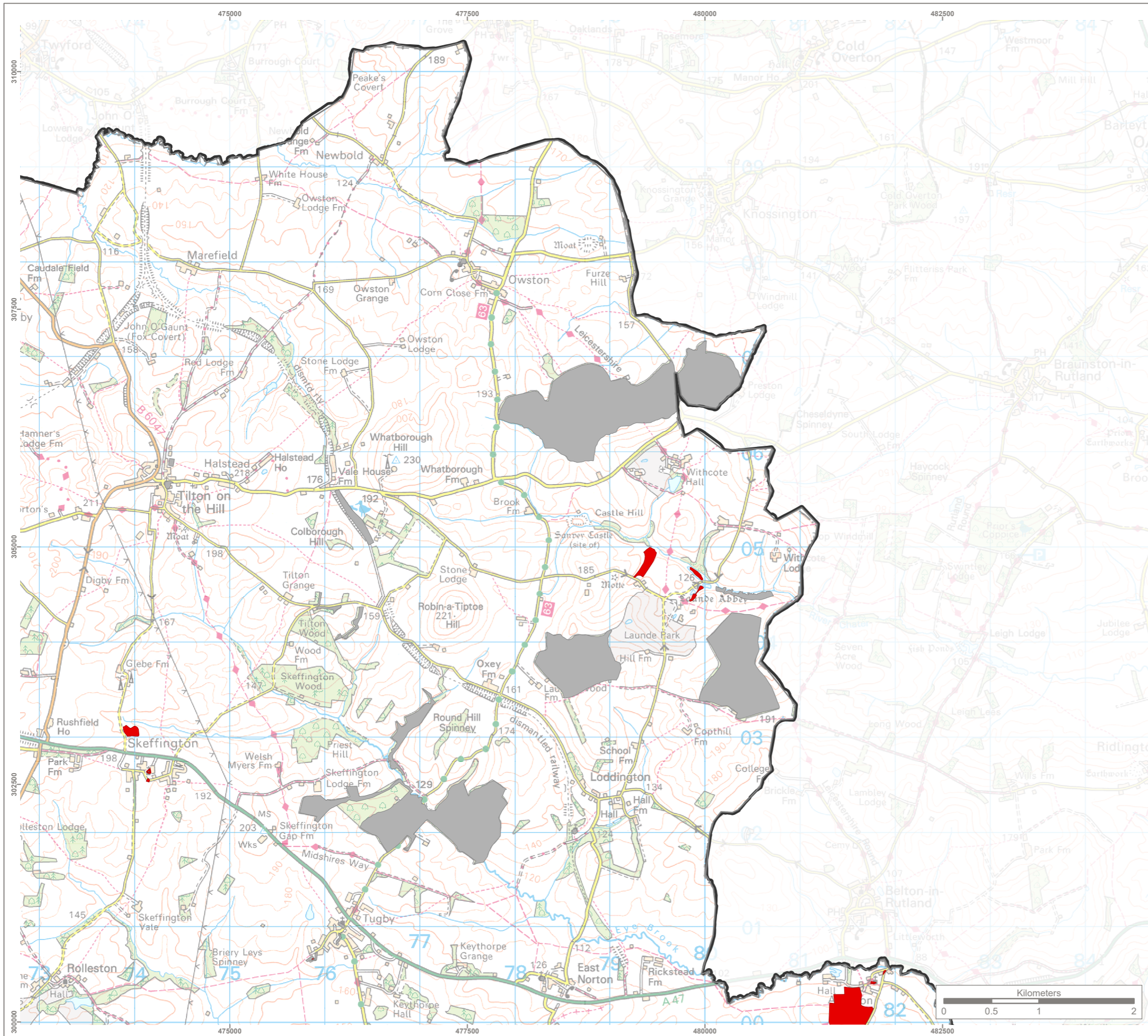
401 Faraday Street, Birchwood Park, Warrington, WA3 6GA  
 Tel 01925 844004 e-mail tep@tep.uk.com www.tep.uk.com

Project  
**Harborough Open Space Strategy Review**

Title  
**Open Space Value Assessment**

Drawing Number  
**G11133.007.2** Page 2 of 10

Drawn	Checked	Approved	Scale	Date
MG	CW	RM	1:40,000 @ A3	31/10/2025



**KEY**

- Harborough District
- Harborough Sub Areas

**Open Space Value Banding**

- Low (10)
- No audit (24)

Reproduced by permission of Ordnance Survey on behalf of HMSO.  
 Contains OS data © Crown Copyright and database right 2025. All rights reserved.  
 Contains data from OS Zoomstack.  
 Harborough District Council 2025. Licence Number 100023843.  
 Sources: Esri, TomTom, Garmin, FAO, NOAA, USGS, © OpenStreetMap contributors, and the GIS User Community.



Rev	Description	Drawn	Approved	Date

**TEP** | **THE ENVIRONMENT PARTNERSHIP**

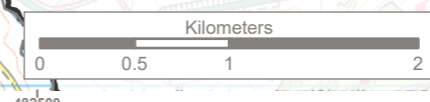
401 Faraday Street, Birchwood Park, Warrington, WA3 6GA  
 Tel 01925 844004 e-mail tep@tep.uk.com www.tep.uk.com

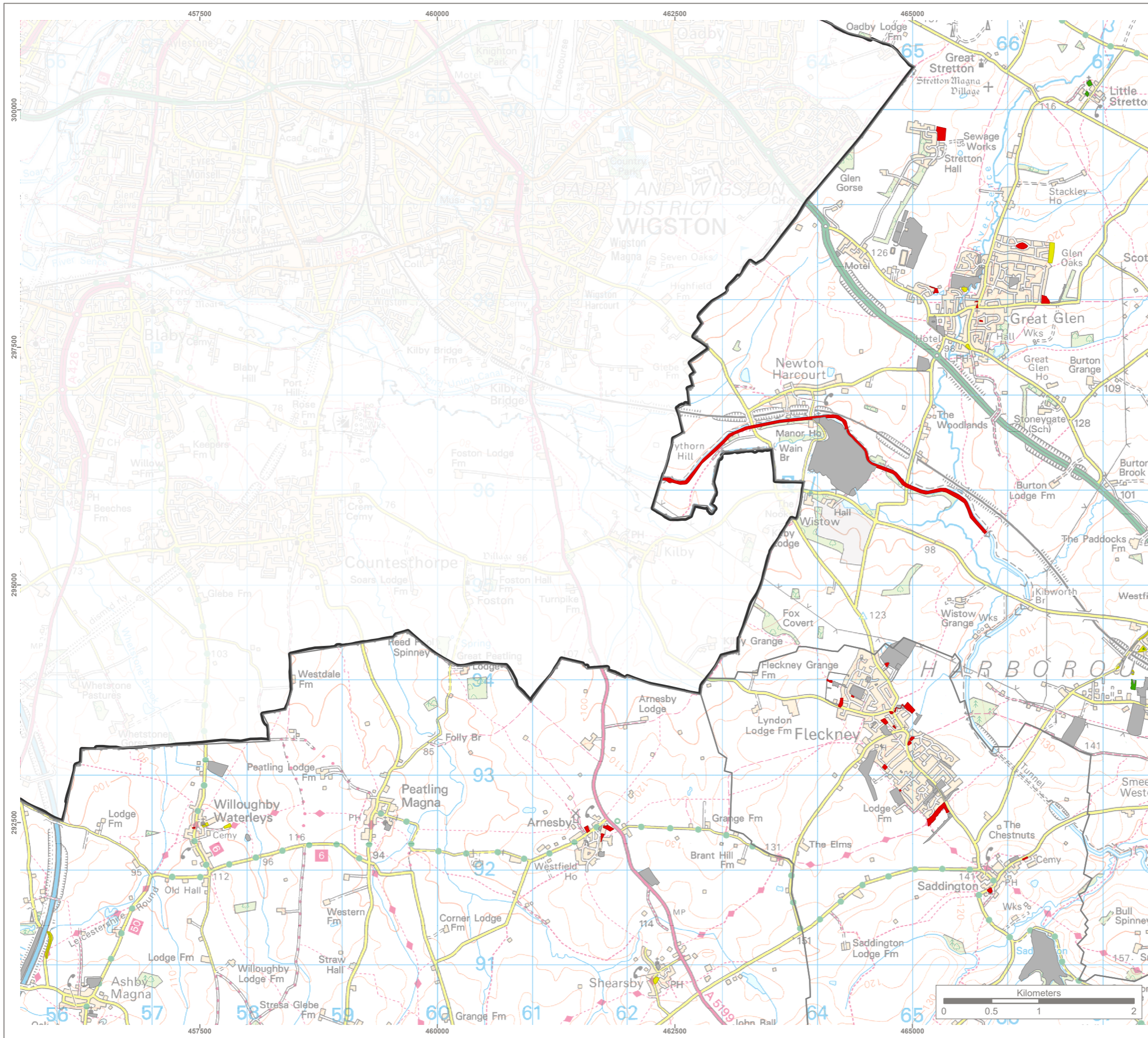
Project  
**Harborough Open Space Strategy Review**

Title  
**Open Space Value Assessment**

Drawing Number  
**G11133.007.3** Page 3 of 10

Drawn	Checked	Approved	Scale	Date
MG	CW	RM	1:40,000 @ A3	31/10/2025





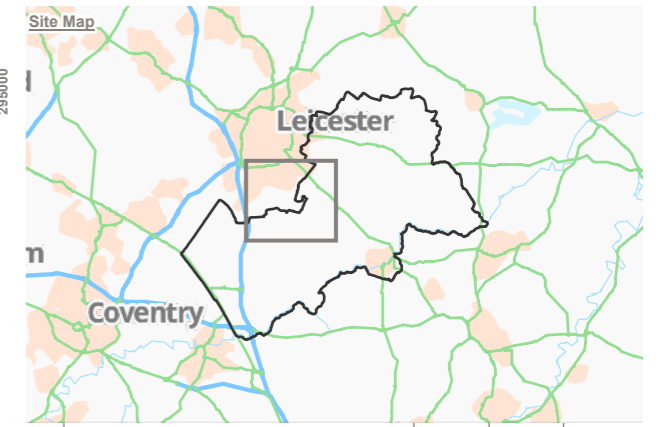
**KEY**

- Harborough District
- Harborough Sub Areas

**Open Space Value Banding**

- High (4)
- Medium (12)
- Low (27)
- No audit (63)

Reproduced by permission of Ordnance Survey on behalf of HMSO.  
 Contains OS data © Crown Copyright and database right 2025. All rights reserved.  
 Contains data from OS Zoomstack.  
 Harborough District Council 2025. Licence Number 100023843.  
 Sources: Esri, TomTom, Garmin, FAO, NOAA, USGS, © OpenStreetMap contributors, and the GIS User Community.



Rev	Description	Drawn	Approved	Date

**TEP** | **THE ENVIRONMENT PARTNERSHIP**

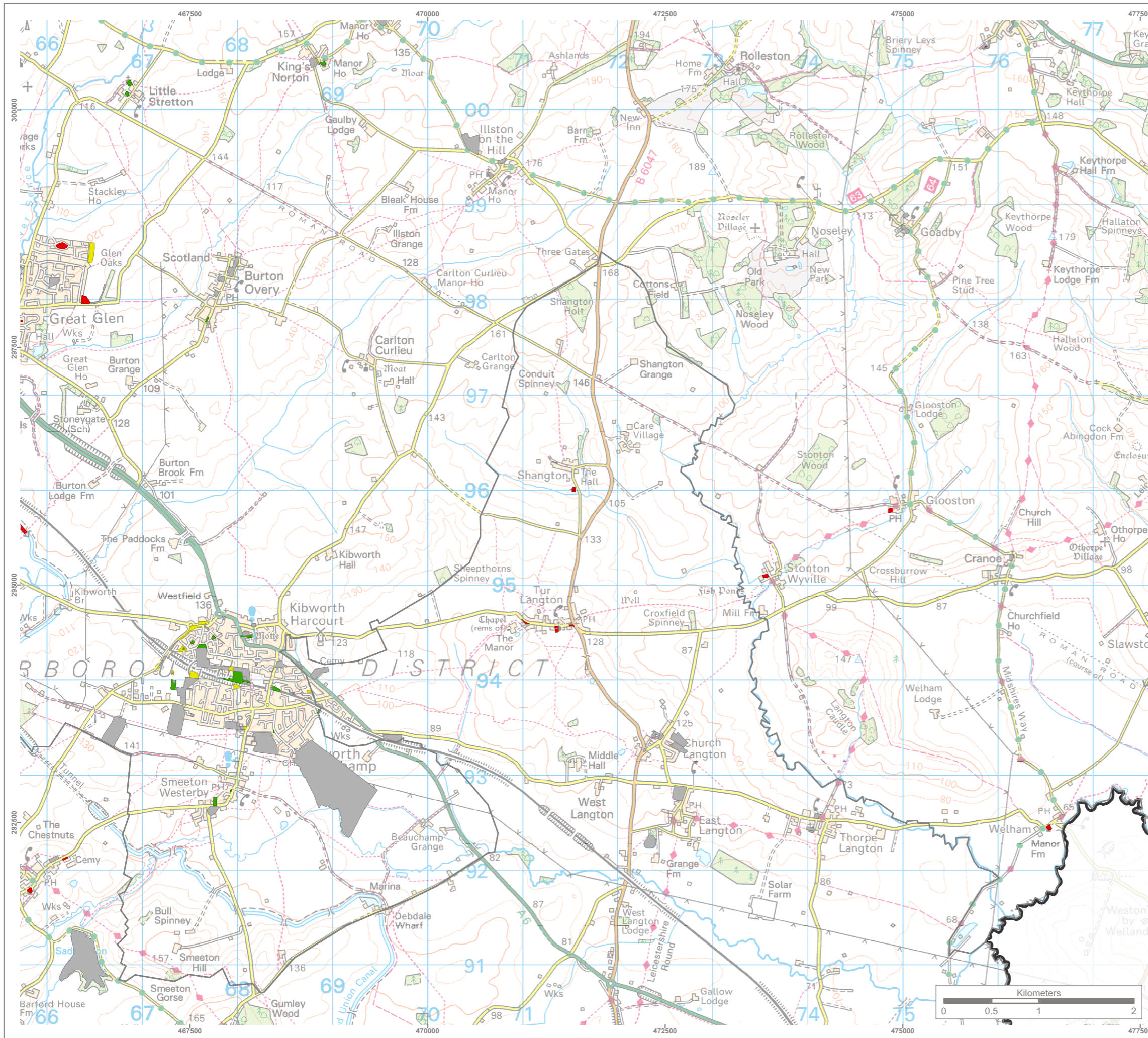
401 Faraday Street, Birchwood Park, Warrington, WA3 6GA  
 Tel 01925 844004 e-mail tep@tep.uk.com www.tep.uk.com

Project  
**Harborough Open Space Strategy Review**

Title  
**Open Space Value Assessment**

Drawing Number  
**G11133.007.4** Page 4 of 10

Drawn	Checked	Approved	Scale	Date
MG	CW	RM	1:40,000 @ A3	31/10/2025



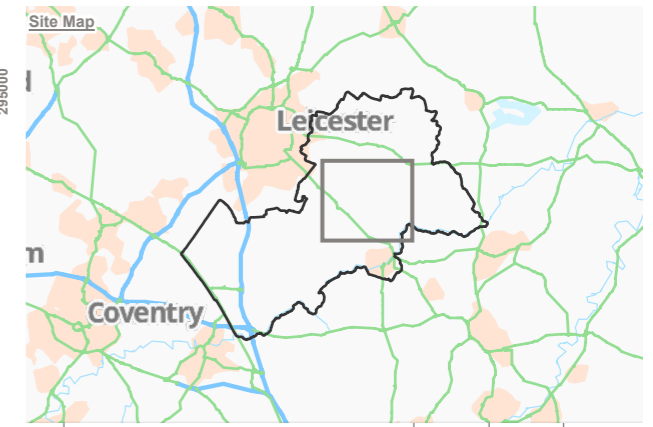
**KEY**

- Harborough District
- Harborough Sub Areas

**Open Space Value Banding**

- High (16)
- Medium (13)
- Low (14)
- No audit (74)

Reproduced by permission of Ordnance Survey on behalf of HMSO.  
 Contains OS data © Crown Copyright and database right 2025. All rights reserved.  
 Contains data from OS Zoomstack.  
 Harborough District Council 2025. Licence Number 100023843.  
 Sources: Esri, TomTom, Garmin, FAO, NOAA, USGS, © OpenStreetMap contributors, and the GIS User Community.



Rev	Description	Drawn	Approved	Date

**TEP** | THE ENVIRONMENT PARTNERSHIP

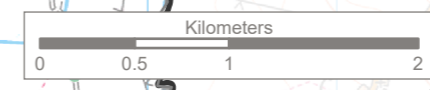
401 Faraday Street, Birchwood Park, Warrington, WA3 6GA  
 Tel 01925 844004 e-mail tep@tep.uk.com www.tep.uk.com

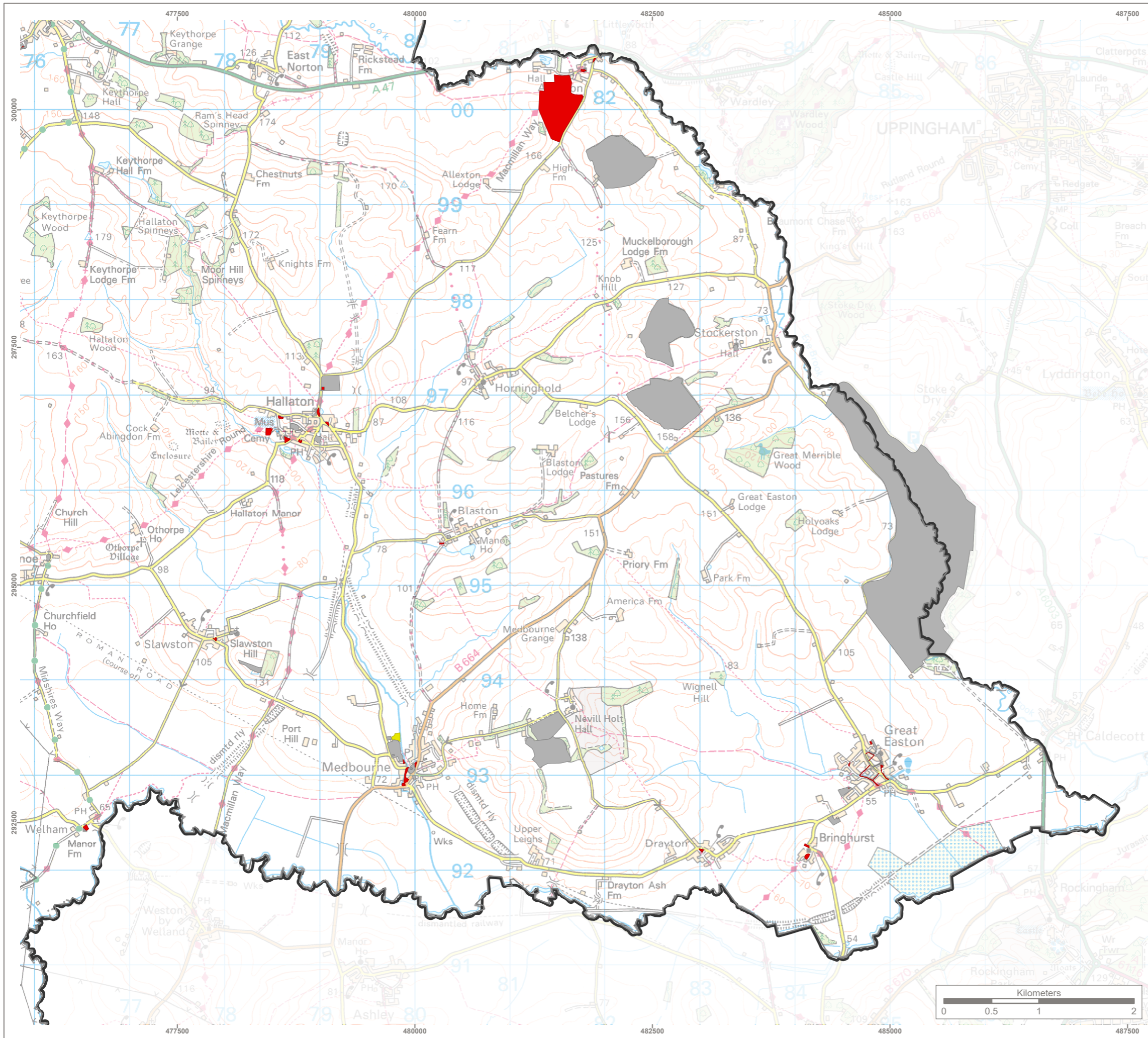
Project: Harborough Open Space Strategy Review

Title: Open Space Value Assessment

Drawing Number: G11133.007.5 Page 5 of 10

Drawn	Checked	Approved	Scale	Date
MG	CW	RM	1:40,000 @ A3	31/10/2025





**KEY**

- Harborough District
- Harborough Sub Areas

**Open Space Value Banding**

- Medium (1)
- Low (30)
- No audit (40)

Reproduced by permission of Ordnance Survey on behalf of HMSO.  
 Contains OS data © Crown Copyright and database right 2025. All rights reserved.  
 Contains data from OS Zoomstack.  
 Harborough District Council 2025. Licence Number 100023843.  
 Sources: Esri, TomTom, Garmin, FAO, NOAA, USGS, © OpenStreetMap contributors, and the GIS User Community.



Rev	Description	Drawn	Approved	Date

**TEP** | **THE ENVIRONMENT PARTNERSHIP**

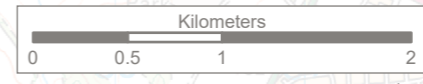
401 Faraday Street, Birchwood Park, Warrington, WA3 6GA  
 Tel 01925 844004 e-mail tep@tep.uk.com www.tep.uk.com

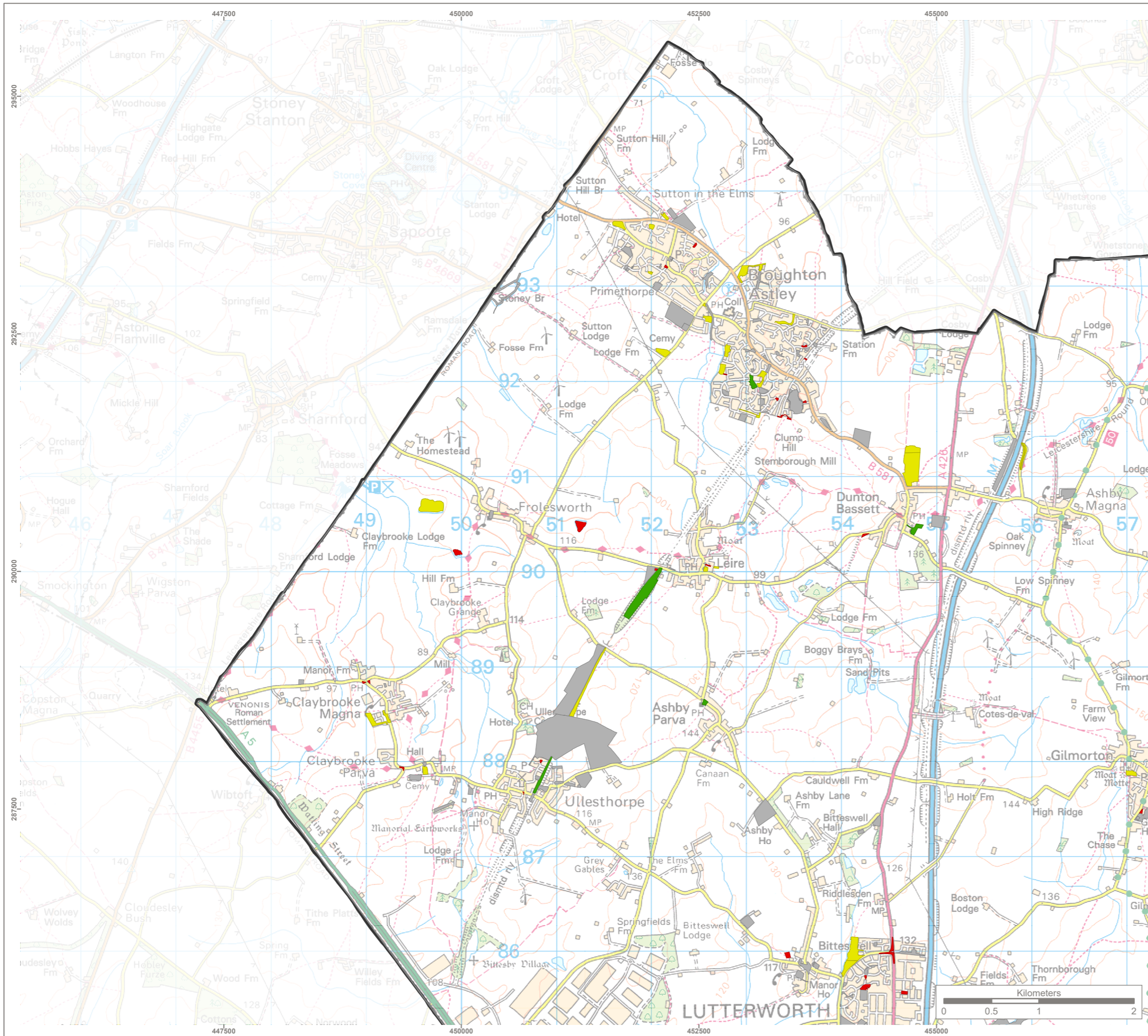
Project  
**Harborough Open Space Strategy Review**

Title  
**Open Space Value Assessment**

Drawing Number  
**G11133.007.6** Page 6 of 10

Drawn	Checked	Approved	Scale	Date
MG	CW	RM	1:40,000 @ A3	31/10/2025





**KEY**

- Harborough District
- Harborough Sub Areas

**Open Space Value Banding**

- High (5)
- Medium (27)
- Low (24)
- No audit (86)

Reproduced by permission of Ordnance Survey on behalf of HMSO.  
 Contains OS data © Crown Copyright and database right 2025. All rights reserved.  
 Contains data from OS Zoomstack.  
 Harborough District Council 2025. Licence Number 100023843.  
 Sources: Esri, TomTom, Garmin, FAO, NOAA, USGS, © OpenStreetMap contributors, and the GIS User Community.



Rev	Description	Drawn	Approved	Date

**TEP** | **THE ENVIRONMENT PARTNERSHIP**

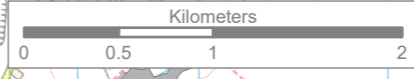
401 Faraday Street, Birchwood Park, Warrington, WA3 6GA  
 Tel 01925 844004 e-mail tep@tep.uk.com www.tep.uk.com

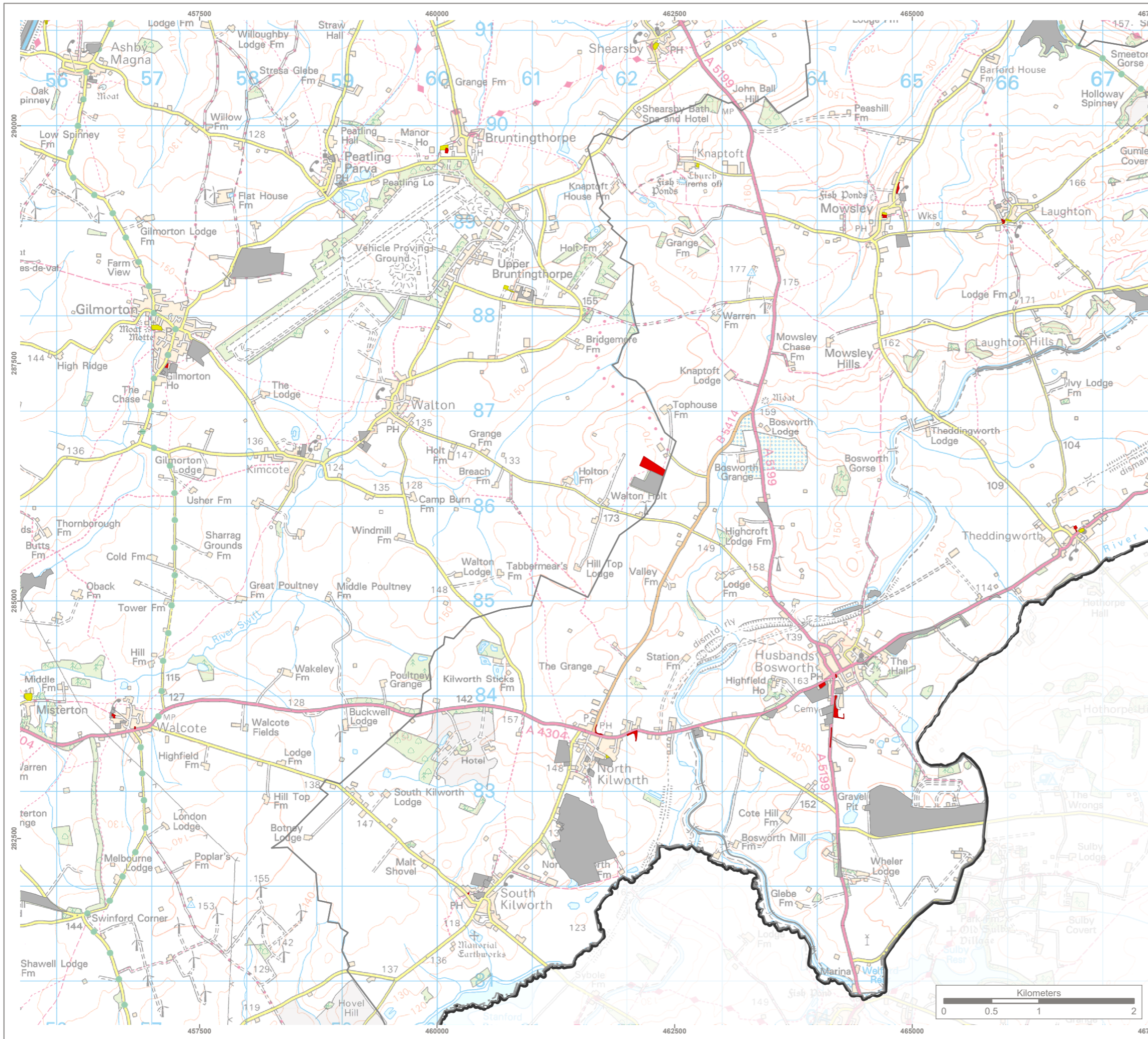
Project  
**Harborough Open Space Strategy Review**

Title  
**Open Space Value Assessment**

Drawing Number  
**G11133.007.7** Page 7 of 10

Drawn	Checked	Approved	Scale	Date
MG	CW	RM	1:40,000 @ A3	31/10/2025





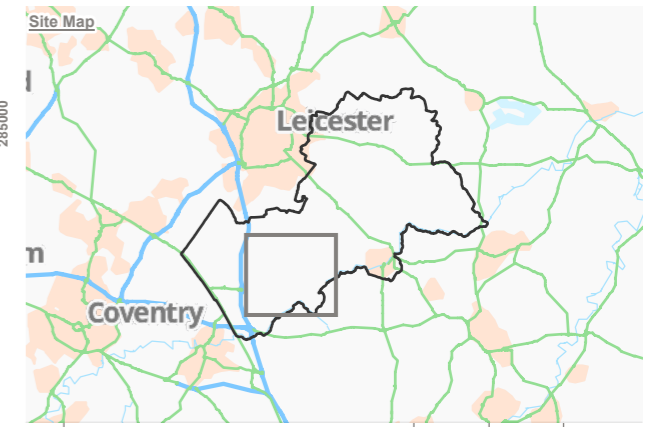
**KEY**

- Harborough District
- Harborough Sub Areas

**Open Space Value Banding**

- Medium (11)
- Low (16)
- No audit (65)

Reproduced by permission of Ordnance Survey on behalf of HMSO.  
 Contains OS data © Crown Copyright and database right 2025. All rights reserved.  
 Contains data from OS Zoomstack.  
 Harborough District Council 2025. Licence Number 100023843.  
 Sources: Esri, TomTom, Garmin, FAO, NOAA, USGS, © OpenStreetMap contributors, and the GIS User Community.



Rev	Description	Drawn	Approved	Date

**TEP** | **THE ENVIRONMENT PARTNERSHIP**

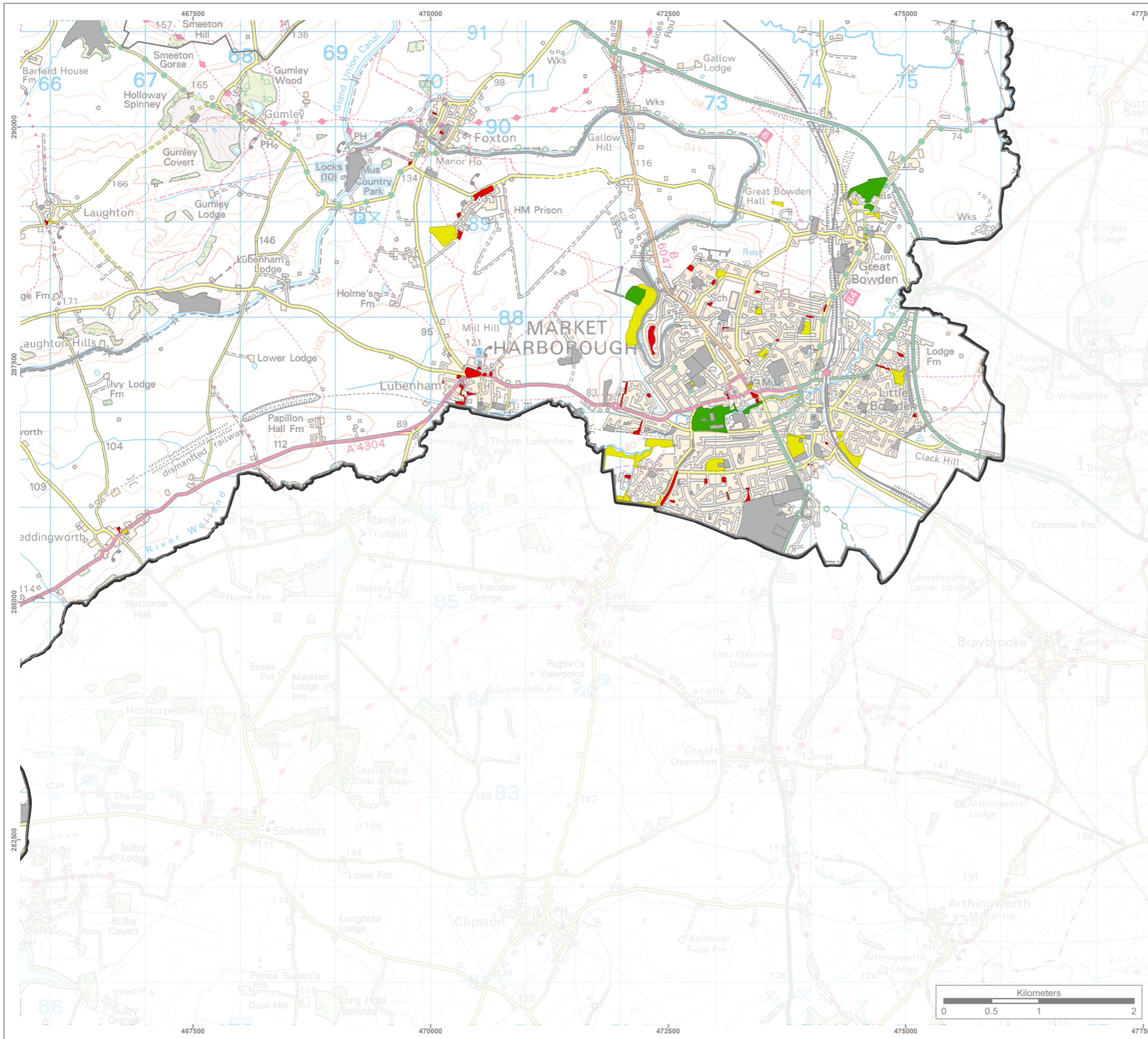
401 Faraday Street, Birchwood Park, Warrington, WA3 6GA  
 Tel 01925 844004 e-mail tep@tep.uk.com www.tep.uk.com

Project  
**Harborough Open Space Strategy Review**

Title  
**Open Space Value Assessment**

Drawing Number  
**G11133.007.8** Page 8 of 10

Drawn	Checked	Approved	Scale	Date
MG	CW	RM	1:40,000 @ A3	31/10/2025



**KEY**

- Harborough District
- Harborough Sub Areas

**Open Space Value Banding**

- High (4)
- Medium (26)
- Low (44)
- No audit (122)

Reproduced by permission of Ordnance Survey on behalf of HMSO.  
 Contains OS data © Crown Copyright and database right 2025. All rights reserved.  
 Contains data from OS Zoomstack.  
 Harborough District Council 2025. Licence Number 100023843.  
 Sources: Esri, TomTom, Garmin, FAO, NOAA, USGS, © OpenStreetMap contributors, and the GIS User Community.



Rev	Description	Drawn	Approved	Date

**TEP** | **THE ENVIRONMENT PARTNERSHIP**

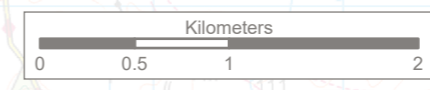
401 Faraday Street, Birchwood Park, Warrington, WA3 6GA  
 Tel 01925 844004 e-mail tep@tep.uk.com www.tep.uk.com

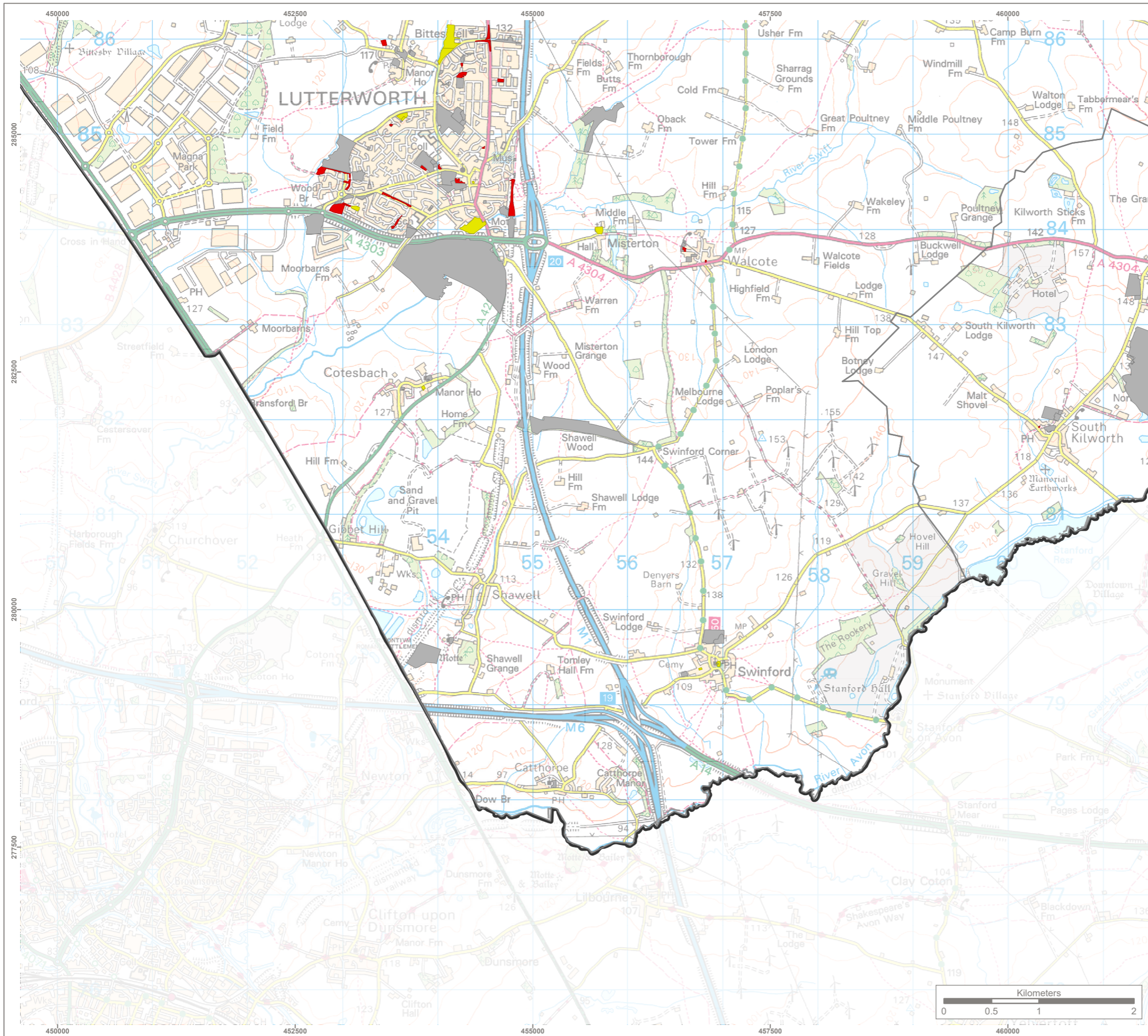
Project  
**Harborough Open Space Strategy Review**

Title  
**Open Space Value Assessment**

Drawing Number  
**G11133.007.9** Page 9 of 10

Drawn	Checked	Approved	Scale	Date
MG	CW	RM	1:40,000 @ A3	31/10/2025





**KEY**

- Harborough District
- Harborough Sub Areas

**Open Space Value Banding**

- Medium (11)
- Low (19)
- No audit (62)

Reproduced by permission of Ordnance Survey on behalf of HMSO.  
 Contains OS data © Crown Copyright and database right 2025. All rights reserved.  
 Contains data from OS Zoomstack.  
 Harborough District Council 2025. Licence Number 100023843.  
 Sources: Esri, TomTom, Garmin, FAO, NOAA, USGS, © OpenStreetMap contributors, and the GIS User Community.



Rev	Description	Drawn	Approved	Date

**TEP** | **THE ENVIRONMENT PARTNERSHIP**

401 Faraday Street, Birchwood Park, Warrington, WA3 6GA  
 Tel 01925 844004 e-mail tep@tep.uk.com www.tep.uk.com

Project  
**Harborough Open Space Strategy Review**

Title  
**Open Space Value Assessment**

Drawing Number  
**G11133.007.10** Page 10 of 10

Drawn	Checked	Approved	Scale	Date
MG	CW	RM	1:40,000 @ A3	31/10/2025