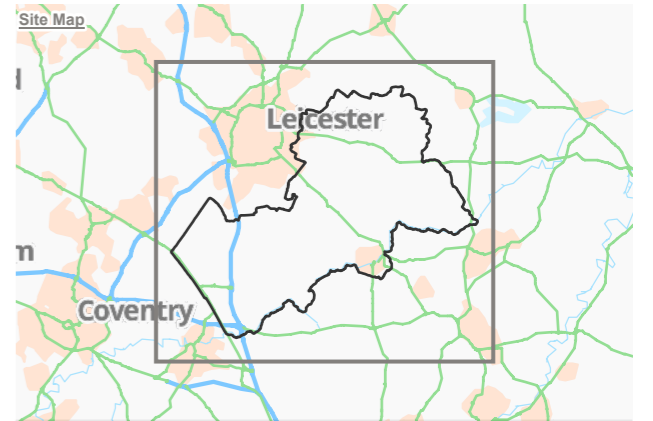


KEY

- Harborough District
- Harborough Sub Areas
- Page and page number
- Open Space Quality Banding**
- Excellent (24)
- Very good (86)
- Good (115)
- Fair (70)
- Poor (13)
- No audit (512)

Reproduced by permission of Ordnance Survey on behalf of HMSO.

Contains OS data © Crown Copyright and database right 2025. All rights reserved.
 Contains data from OS Zoomstack.
 Harborough District Council 2025. Licence Number 100023843.
 Sources: Esri, TomTom, Garmin, FAO, NOAA, USGS, © OpenStreetMap contributors, and the GIS User Community.



Rev	Description	Drawn	Approved	Date



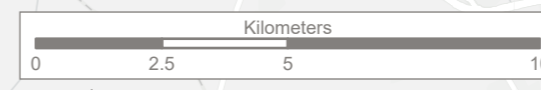
401 Faraday Street, Birchwood Park, Warrington, WA3 6GA
 Tel 01925 844004 e-mail tep@tep.uk.com www.tep.uk.com

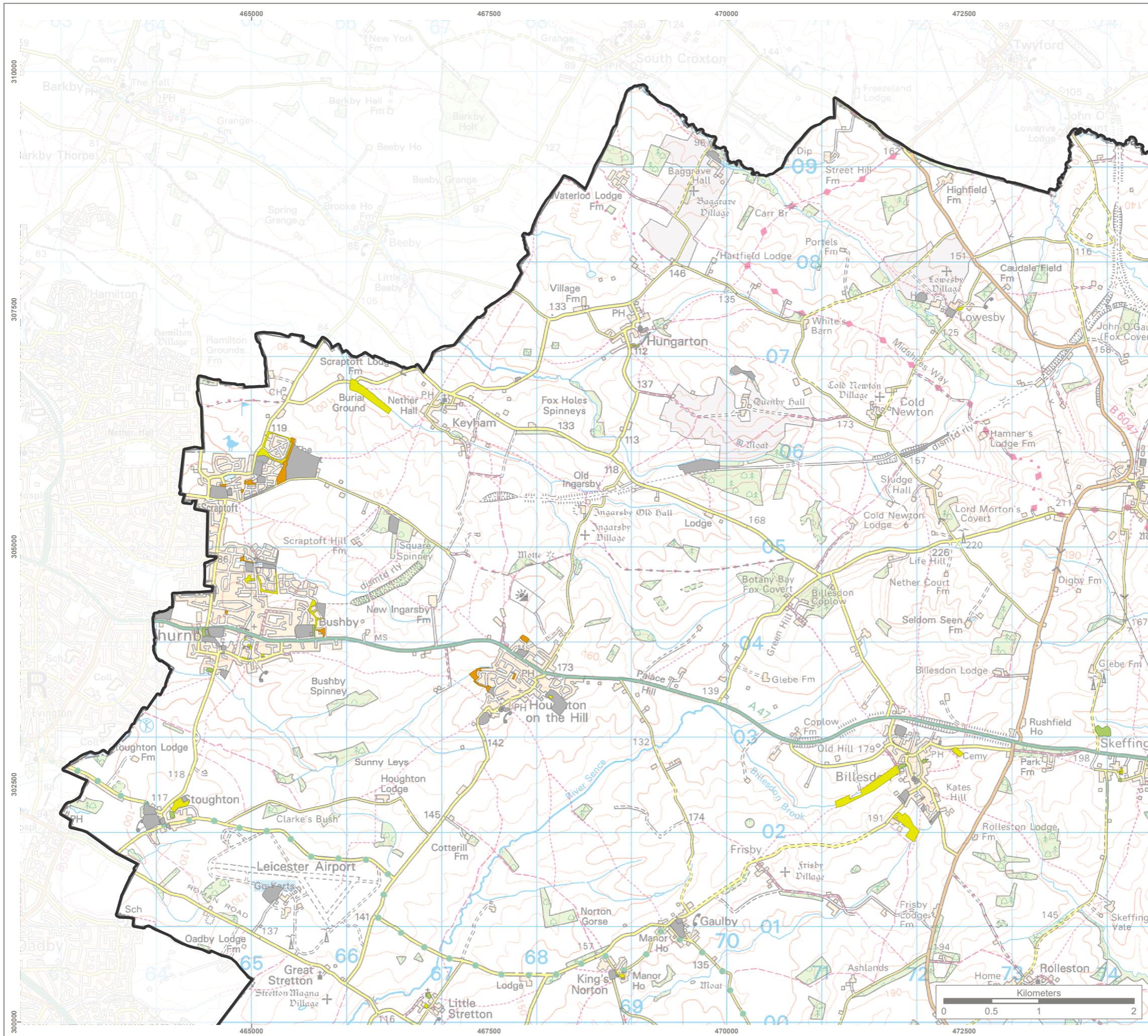
Project
Harborough Open Space Strategy Review

Title
Open Space Quality Assessment

Drawing Number
G11133.006.1 Page 1 of 10

Drawn	Checked	Approved	Scale	Date
MG	CW	RM	1:150,000 @ A3	31/10/2025





- KEY**
- Harborough District
 - Harborough Sub Areas
- Open Space Quality Banding**
- Very good (12)
 - Good (21)
 - Fair (10)
 - No audit (75)

Reproduced by permission of Ordnance Survey on behalf of HMSO.
 Contains OS data © Crown Copyright and database right 2025. All rights reserved.
 Contains data from OS Zoomstack.
 Harborough District Council 2025. Licence Number 100023843.
 Sources: Esri, TomTom, Garmin, FAO, NOAA, USGS, © OpenStreetMap contributors, and the GIS User Community.



Rev	Description	Drawn	Approved	Date

TEP | **THE ENVIRONMENT PARTNERSHIP**

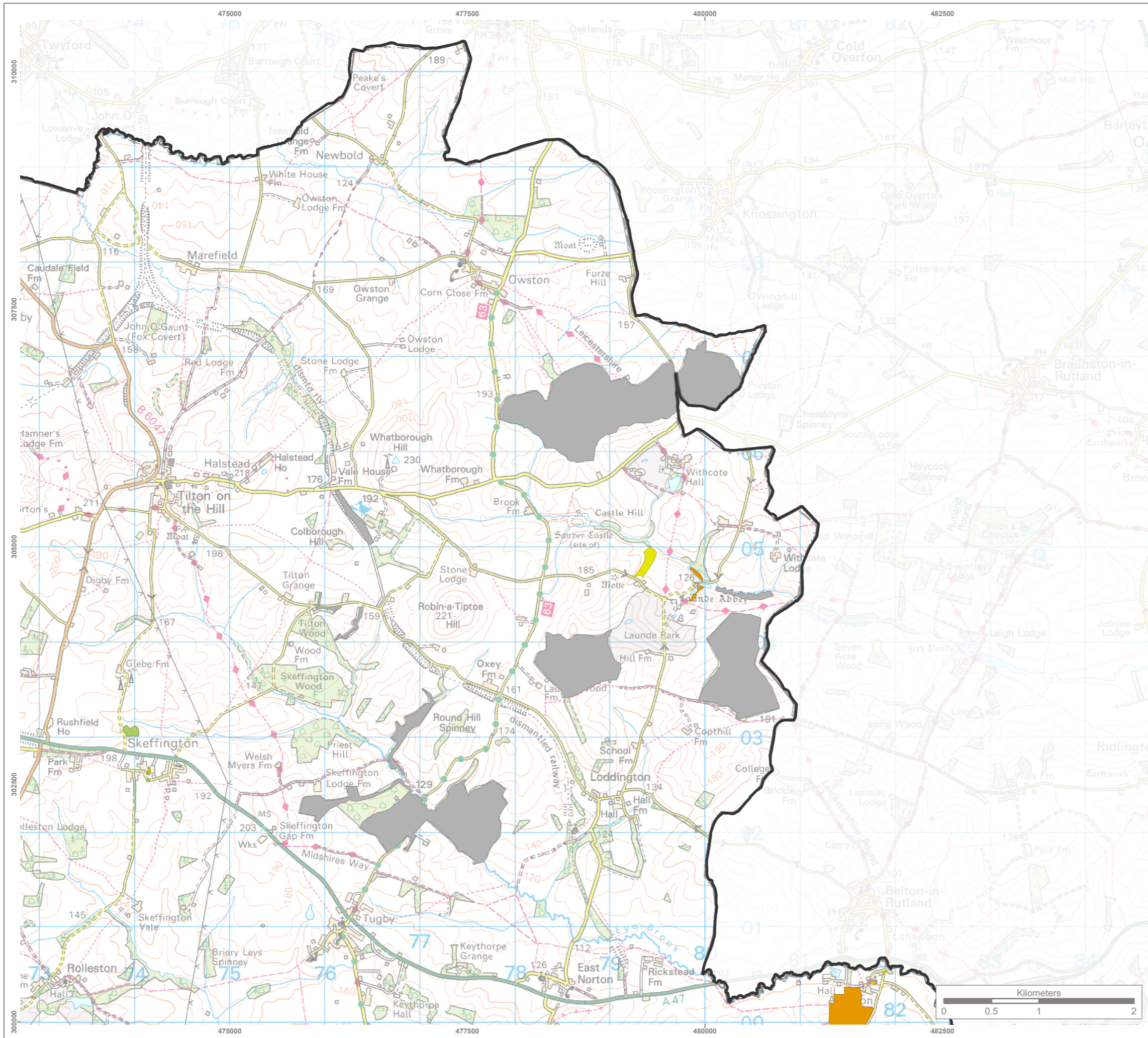
401 Faraday Street, Birchwood Park, Warrington, WA3 6GA
 Tel 01925 844004 e-mail tep@tep.uk.com www.tep.uk.com

Project
Harborough Open Space Strategy Review

Title
Open Space Quality Assessment

Drawing Number
G11133.006.2 Page 2 of 10

Drawn	Checked	Approved	Scale	Date
MG	CW	RM	1:40,000 @ A3	31/10/2025



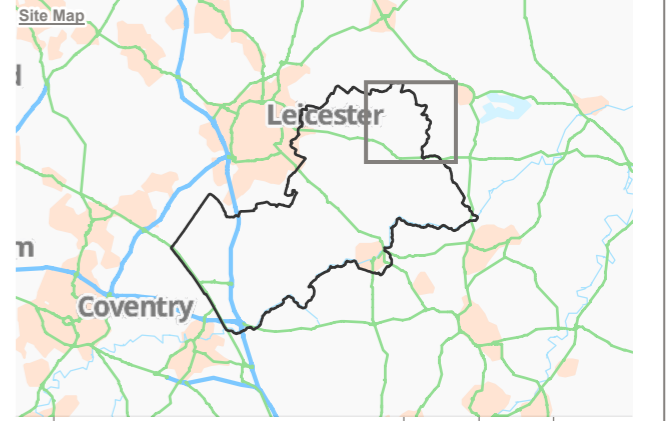
KEY

- Harborough District
- Harborough Sub Areas

Open Space Quality Banding

- Very good (3)
- Good (4)
- Fair (3)
- No audit (24)

Reproduced by permission of Ordnance Survey on behalf of HMSO.
 Contains OS data © Crown Copyright and database right 2025. All rights reserved.
 Contains data from OS Zoomstack.
 Harborough District Council 2025. Licence Number 100023843.
 Sources: Esri, TomTom, Garmin, FAO, NOAA, USGS, © OpenStreetMap contributors, and the GIS User Community.



Rev	Description	Drawn	Approved	Date

TEP | **THE ENVIRONMENT PARTNERSHIP**

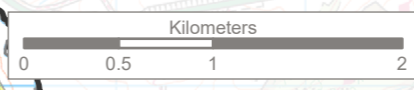
401 Faraday Street, Birchwood Park, Warrington, WA3 6GA
 Tel 01925 844004 e-mail tep@tep.uk.com www.tep.uk.com

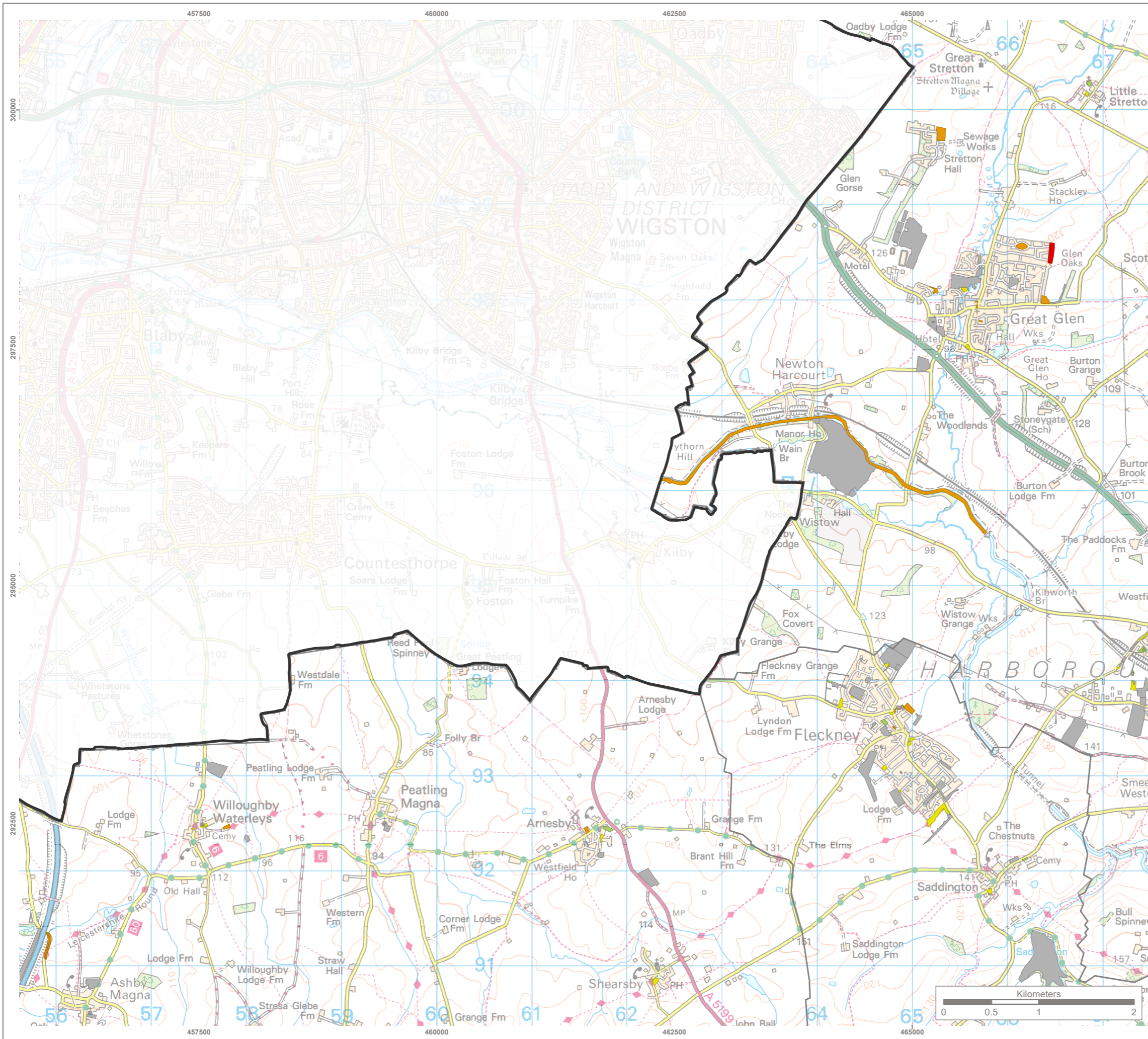
Project
Harborough Open Space Strategy Review

Title
Open Space Quality Assessment

Drawing Number
G11133.006.3 Page 3 of 10

Drawn	Checked	Approved	Scale	Date
MG	CW	RM	1:40,000 @ A3	31/10/2025



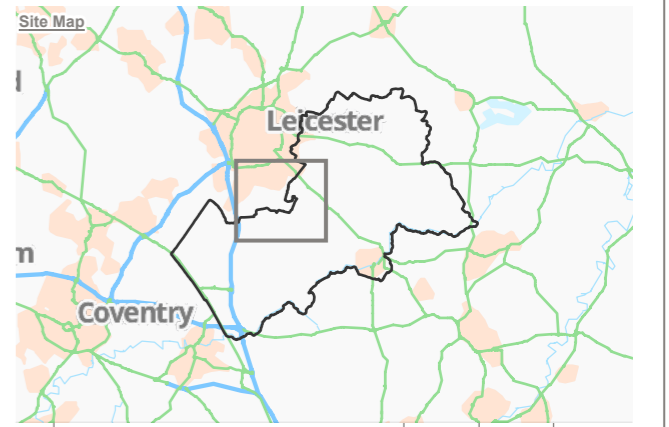


KEY

- Harborough District
- Harborough Sub Areas
- Open Space Quality Banding**
- Very good (8)
- Good (21)
- Fair (13)
- Poor (1)
- No audit (62)

Reproduced by permission of Ordnance Survey on behalf of HMSO.

Contains OS data © Crown Copyright and database right 2025. All rights reserved.
 Contains data from OS Zoomstack.
 Harborough District Council 2025. Licence Number 100023843.
 Sources: Esri, TomTom, Garmin, FAO, NOAA, USGS, © OpenStreetMap contributors, and the GIS User Community.



Rev	Description	Drawn	Approved	Date

TEP | **THE ENVIRONMENT PARTNERSHIP**

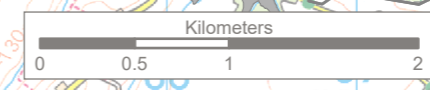
401 Faraday Street, Birchwood Park, Warrington, WA3 6GA
 Tel 01925 844004 e-mail tep@tep.uk.com www.tep.uk.com

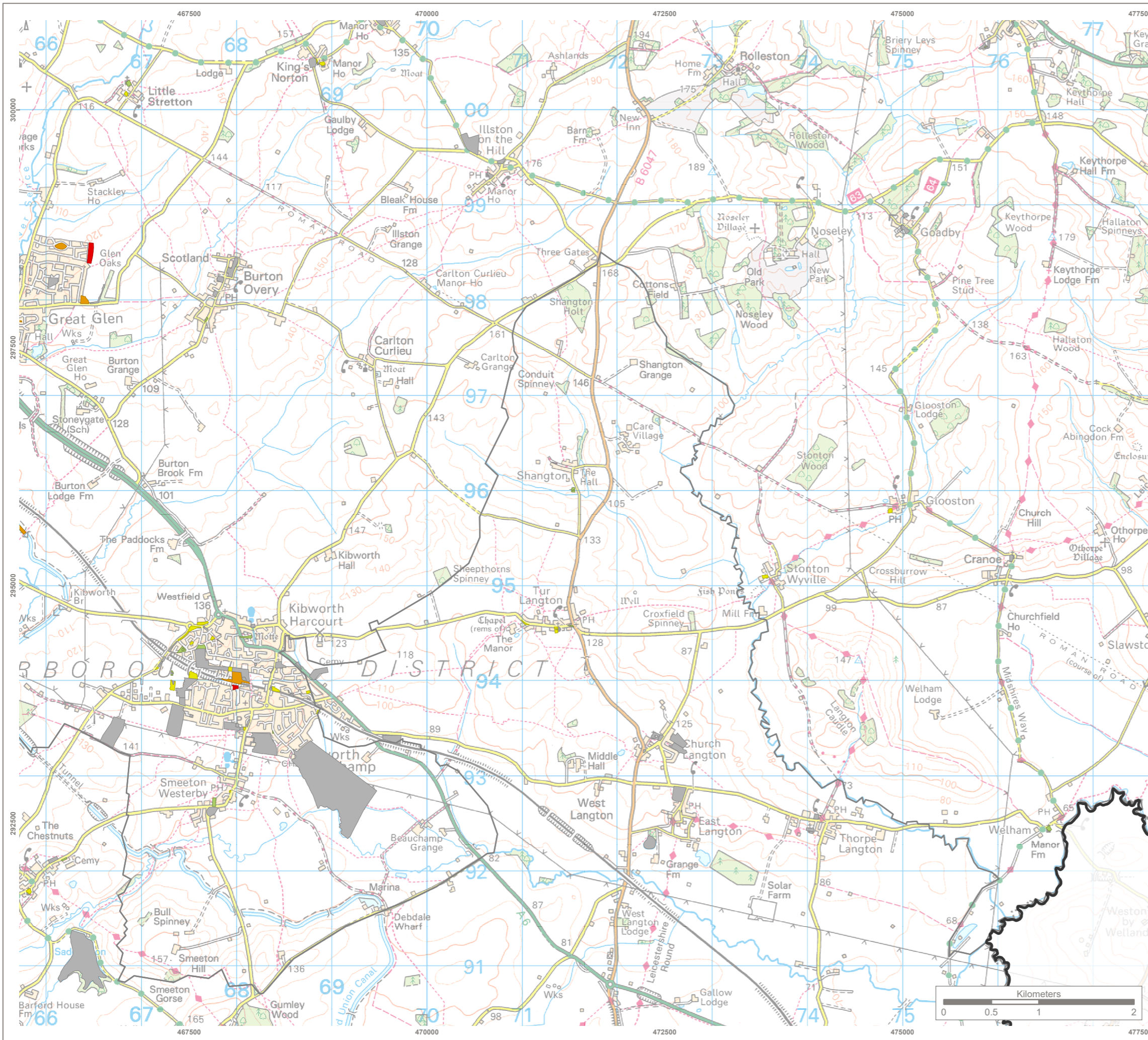
Project
Harborough Open Space Strategy Review

Title
Open Space Quality Assessment

Drawing Number
G11133.006.4 Page 4 of 10

Drawn	Checked	Approved	Scale	Date
MG	CW	RM	1:40,000 @ A3	31/10/2025





KEY

- Harborough District
- Harborough Sub Areas

Open Space Quality Banding

- Very good (14)
- Good (21)
- Fair (6)
- Poor (2)
- No audit (71)

Reproduced by permission of Ordnance Survey on behalf of HMSO.
 Contains OS data © Crown Copyright and database right 2025. All rights reserved.
 Contains data from OS Zoomstack.
 Harborough District Council 2025. Licence Number 100023843.
 Sources: Esri, TomTom, Garmin, FAO, NOAA, USGS, © OpenStreetMap contributors, and the GIS User Community.



Rev	Description	Drawn	Approved	Date

TEP | **THE ENVIRONMENT PARTNERSHIP**

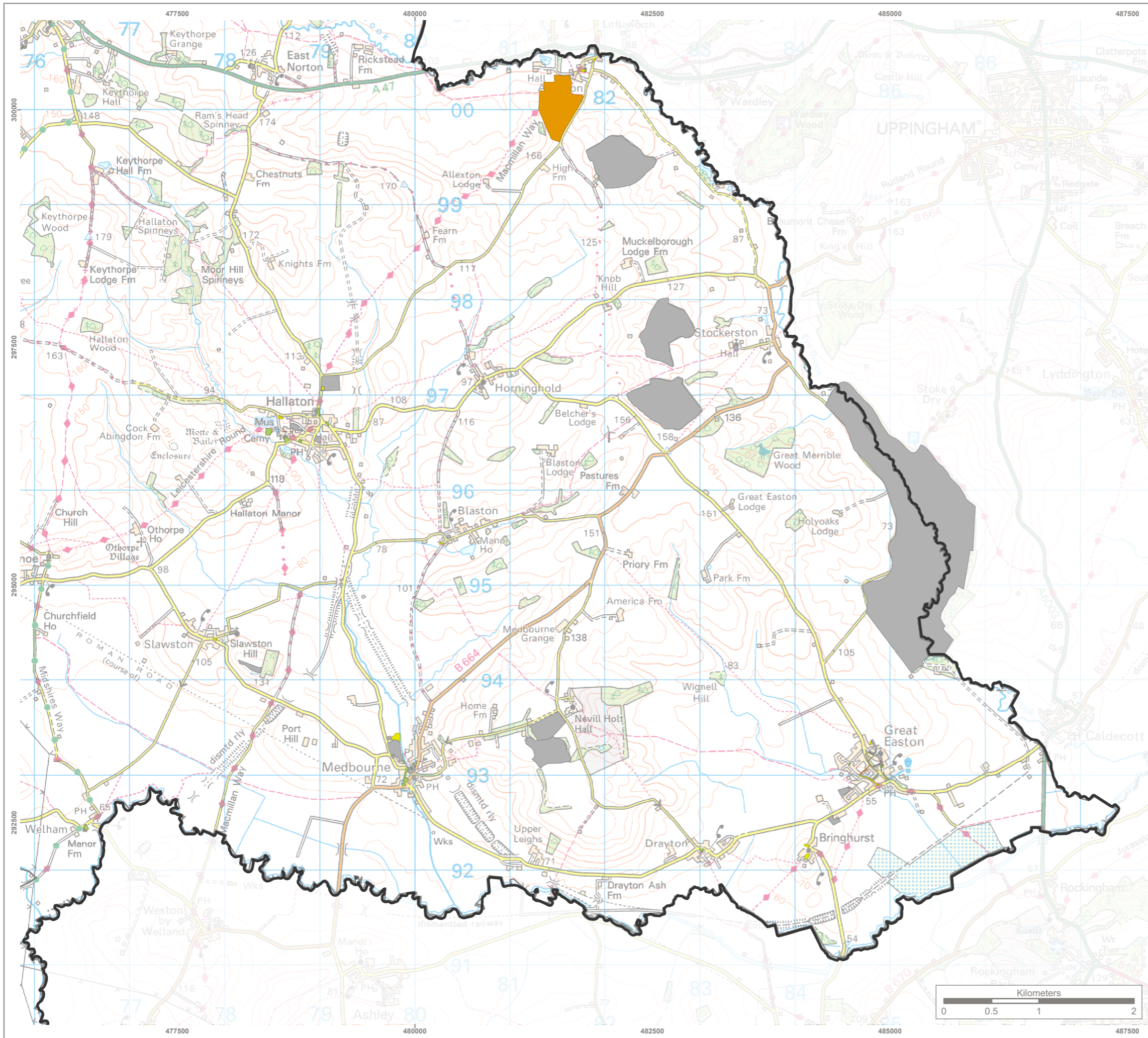
401 Faraday Street, Birchwood Park, Warrington, WA3 6GA
 Tel 01925 844004 e-mail tep@tep.uk.com www.tep.uk.com

Project
Harborough Open Space Strategy Review

Title
Open Space Quality Assessment

Drawing Number
G11133.006.5 Page 5 of 10

Drawn	Checked	Approved	Scale	Date
MG	CW	RM	1:40,000 @ A3	31/10/2025



KEY

- Harborough District
- Harborough Sub Areas

Open Space Quality Banding

- Very good (18)
- Good (11)
- Fair (2)
- No audit (38)

Reproduced by permission of Ordnance Survey on behalf of HMSO.
 Contains OS data © Crown Copyright and database right 2025. All rights reserved.
 Contains data from OS Zoomstack.
 Harborough District Council 2025. Licence Number 100023843.
 Sources: Esri, TomTom, Garmin, FAO, NOAA, USGS, © OpenStreetMap contributors, and the GIS User Community.



Rev	Description	Drawn	Approved	Date

TEP | **THE ENVIRONMENT PARTNERSHIP**

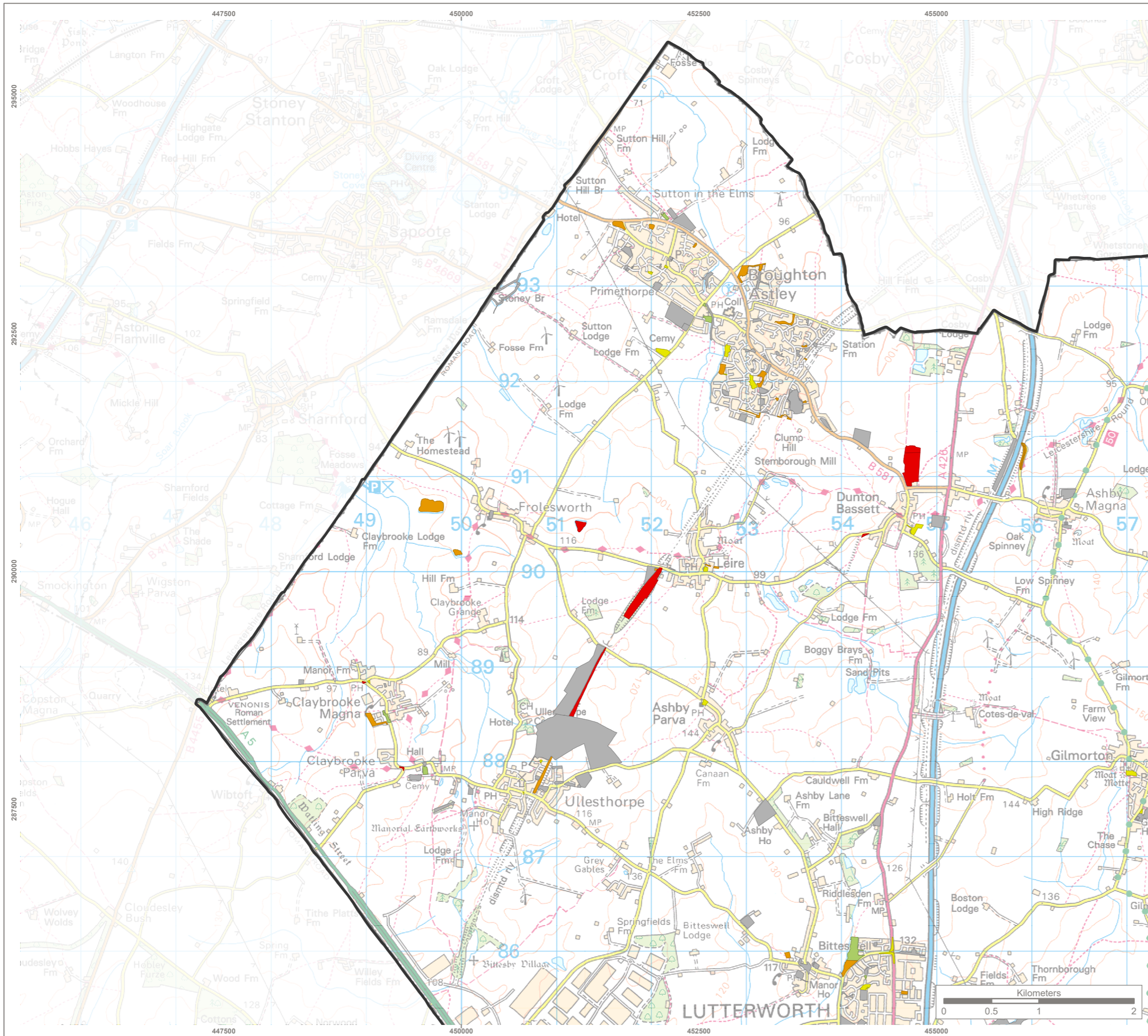
401 Faraday Street, Birchwood Park, Warrington, WA3 6GA
 Tel 01925 844004 e-mail tep@tep.uk.com www.tep.uk.com

Project
Harborough Open Space Strategy Review

Title
Open Space Quality Assessment

Drawing Number
G11133.006.6 Page 6 of 10

Drawn	Checked	Approved	Scale	Date
MG	CW	RM	1:40,000 @ A3	31/10/2025



KEY

- Harborough District
- Harborough Sub Areas

Open Space Quality Banding

- Very good (7)
- Good (16)
- Fair (25)
- Poor (8)
- No audit (84)

Reproduced by permission of Ordnance Survey on behalf of HMSO.
 Contains OS data © Crown Copyright and database right 2025. All rights reserved.
 Contains data from OS Zoomstack.
 Harborough District Council 2025. Licence Number 100023843.
 Sources: Esri, TomTom, Garmin, FAO, NOAA, USGS, © OpenStreetMap contributors, and the GIS User Community.



Rev	Description	Drawn	Approved	Date

TEP | **THE ENVIRONMENT PARTNERSHIP**

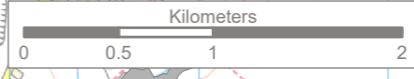
401 Faraday Street, Birchwood Park, Warrington, WA3 6GA
 Tel 01925 844004 e-mail tep@tep.uk.com www.tep.uk.com

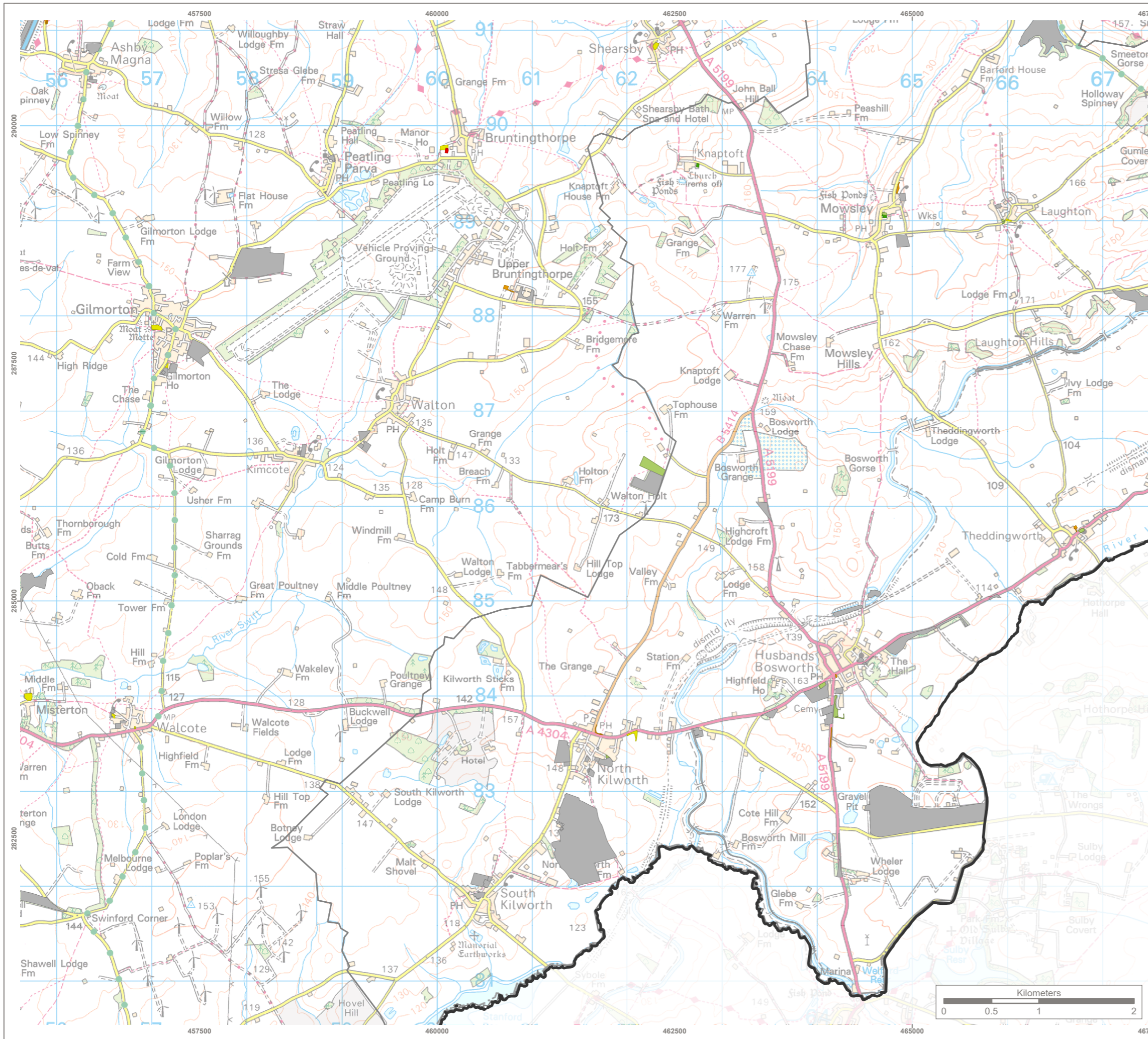
Project
Harborough Open Space Strategy Review

Title
Open Space Quality Assessment

Drawing Number
G11133.006.7 Page 7 of 10

Drawn	Checked	Approved	Scale	Date
MG	CW	RM	1:40,000 @ A3	31/10/2025





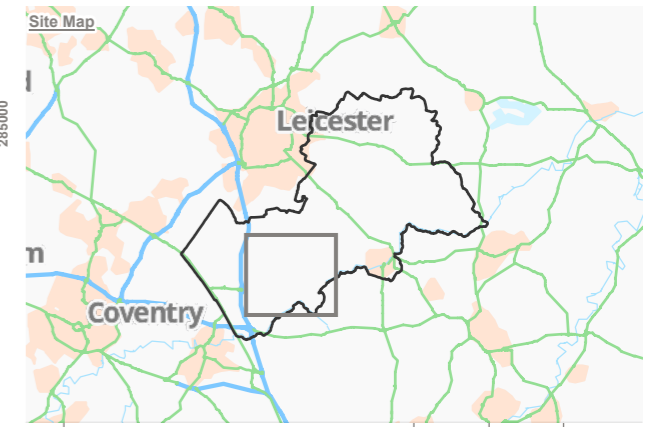
KEY

- Harborough District
- Harborough Sub Areas

Open Space Quality Banding

- Excellent (2)
- Very good (8)
- Good (9)
- Fair (7)
- Poor (1)
- No audit (64)

Reproduced by permission of Ordnance Survey on behalf of HMSO.
 Contains OS data © Crown Copyright and database right 2025. All rights reserved.
 Contains data from OS Zoomstack.
 Harborough District Council 2025. Licence Number 100023843.
 Sources: Esri, TomTom, Garmin, FAO, NOAA, USGS, © OpenStreetMap contributors, and the GIS User Community.



Rev	Description	Drawn	Approved	Date

TEP | **THE ENVIRONMENT PARTNERSHIP**

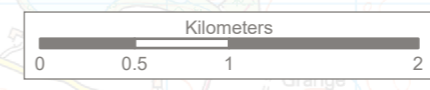
401 Faraday Street, Birchwood Park, Warrington, WA3 6GA
 Tel 01925 844004 e-mail tep@tep.uk.com www.tep.uk.com

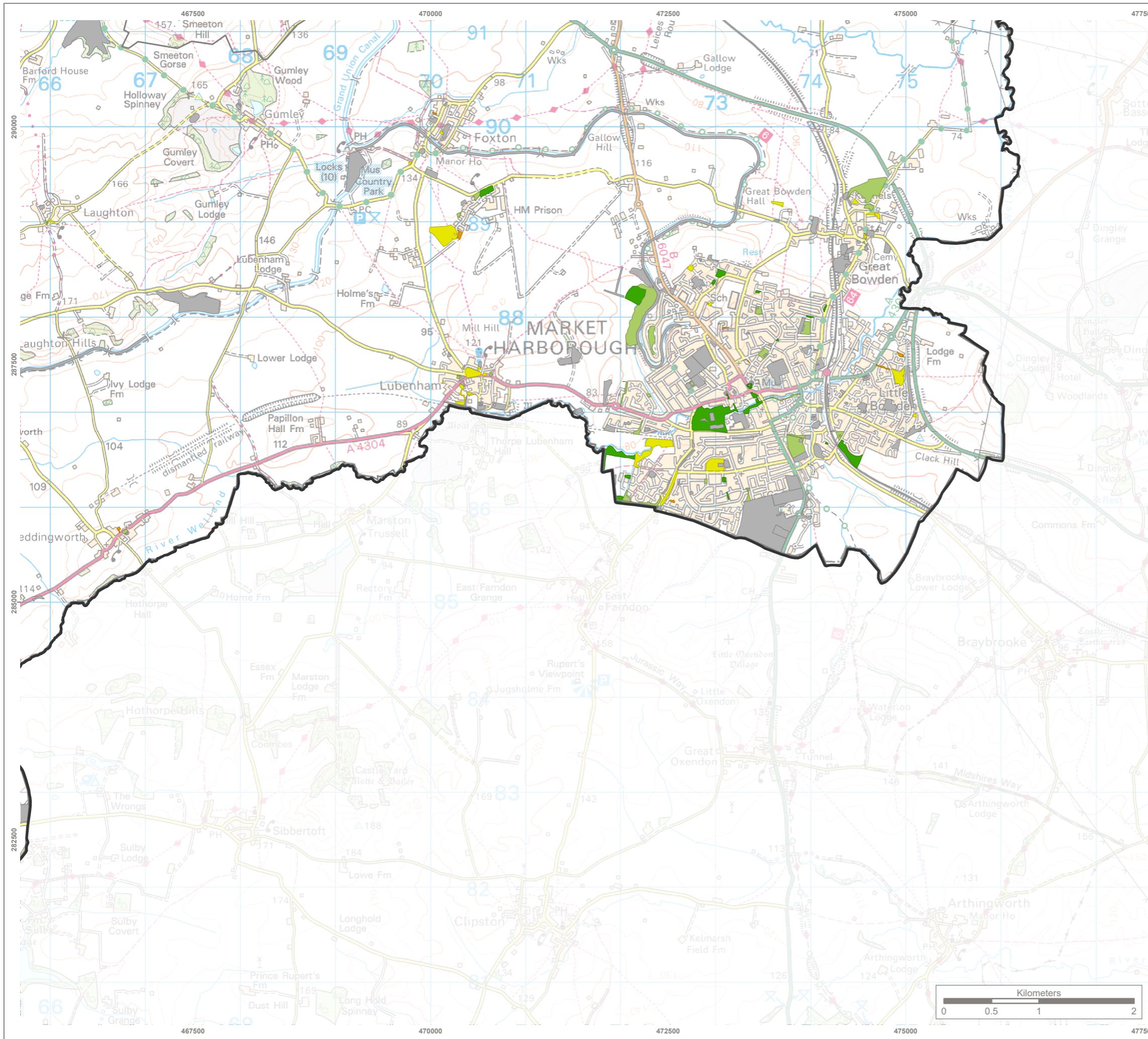
Project
Harborough Open Space Strategy Review

Title
Open Space Quality Assessment

Drawing Number
G11133.006.8 Page 8 of 10

Drawn	Checked	Approved	Scale	Date
MG	CW	RM	1:40,000 @ A3	31/10/2025





KEY

- Harborough District
- Harborough Sub Areas

Open Space Quality Banding

- Excellent (20)
- Very good (25)
- Good (21)
- Fair (8)
- No audit (117)

Reproduced by permission of Ordnance Survey on behalf of HMSO.
 Contains OS data © Crown Copyright and database right 2025. All rights reserved.
 Contains data from OS Zoomstack.
 Harborough District Council 2025. Licence Number 100023843.
 Sources: Esri, TomTom, Garmin, FAO, NOAA, USGS, © OpenStreetMap contributors, and the GIS User Community.



Rev	Description	Drawn	Approved	Date

TEP | **THE ENVIRONMENT PARTNERSHIP**

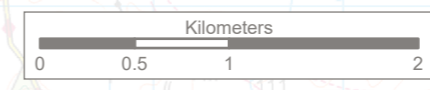
401 Faraday Street, Birchwood Park, Warrington, WA3 6GA
 Tel 01925 844004 e-mail tep@tep.uk.com www.tep.uk.com

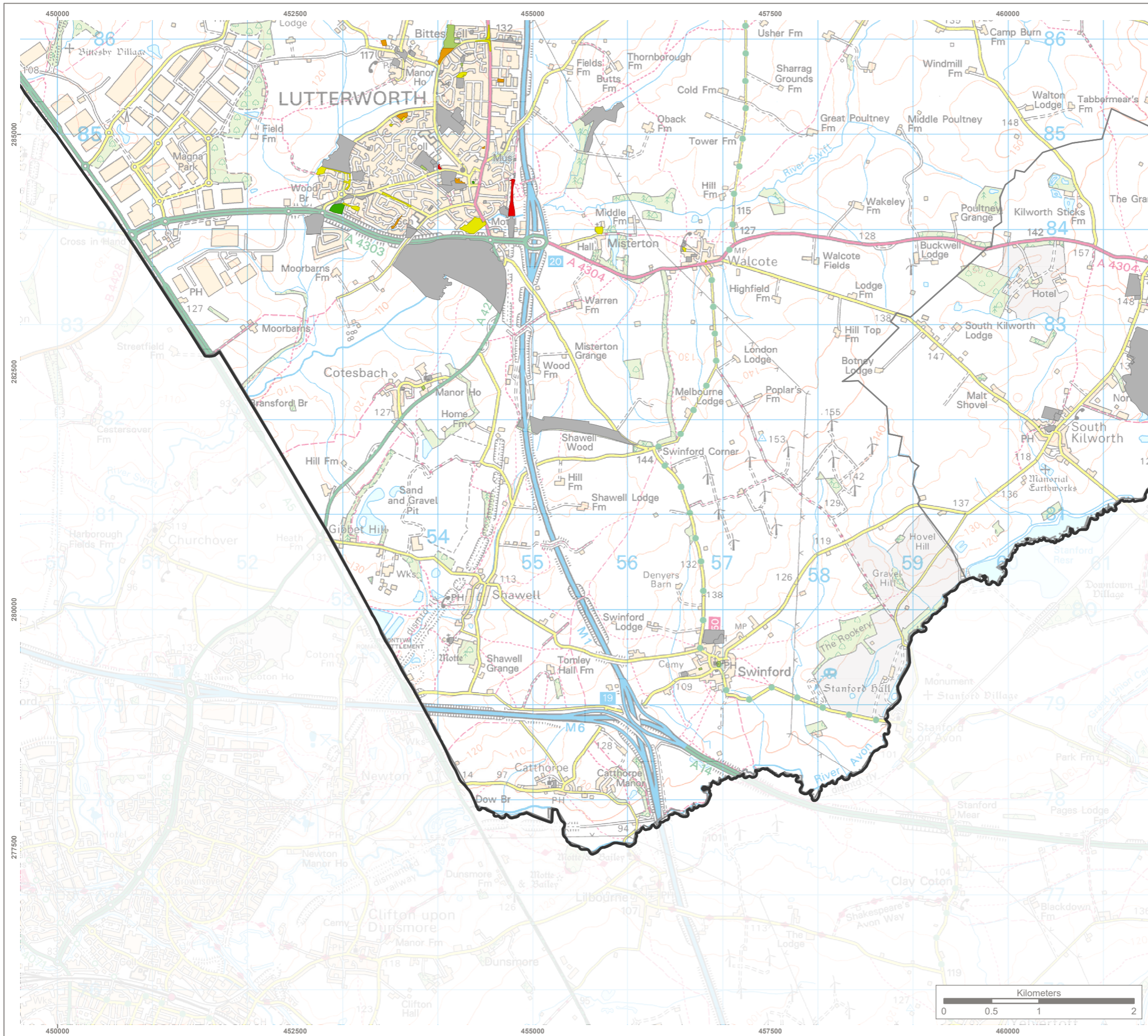
Project
Harborough Open Space Strategy Review

Title
Open Space Quality Assessment

Drawing Number
G11133.006.9 Page 9 of 10

Drawn	Checked	Approved	Scale	Date
MG	CW	RM	1:40,000 @ A3	31/10/2025





KEY

- Harborough District
- Harborough Sub Areas

Open Space Quality Banding

- Excellent (2)
- Very good (7)
- Good (12)
- Fair (7)
- Poor (2)
- No audit (60)

Reproduced by permission of Ordnance Survey on behalf of HMSO.
 Contains OS data © Crown Copyright and database right 2025. All rights reserved.
 Contains data from OS Zoomstack.
 Harborough District Council 2025. Licence Number 100023843.
 Sources: Esri, TomTom, Garmin, FAO, NOAA, USGS, © OpenStreetMap contributors, and the GIS User Community.



Rev	Description	Drawn	Approved	Date

TEP | **THE ENVIRONMENT PARTNERSHIP**

401 Faraday Street, Birchwood Park, Warrington, WA3 6GA
 Tel 01925 844004 e-mail tep@tep.uk.com www.tep.uk.com

Project
Harborough Open Space Strategy Review

Title
Open Space Quality Assessment

Drawing Number
G11133.006.10 Page 10 of 10

Drawn	Checked	Approved	Scale	Date
MG	CW	RM	1:40,000 @ A3	31/10/2025

